

ASSOCIATION STUDIES ARTICLE

Genetic determinants of telomere length and risk of common cancers: a Mendelian randomization study

Chenan Zhang¹, Jennifer A. Doherty⁵, Stephen Burgess⁷, Rayjean J. Hung⁹, Sara Lindström¹⁰, Peter Kraft¹⁰, Jian Gong¹¹, Christopher I. Amos⁶, Thomas A. Sellers¹², Alvaro N.A. Monteiro¹², Georgia Chenevix-Trench¹³, Heike Bickeböller¹⁴, Angela Risch^{15,16}, Paul Brennan¹⁷, James D. McKay¹⁷, Richard S. Houlston¹⁸, Maria Teresa Landi¹⁹, Maria N. Timofeeva¹⁷, Yufei Wang¹⁸, Joachim Heinrich²⁰, Zsofia Kote-Jarai²¹, Rosalind A. Eeles^{21,22}, Ken Muir^{23,24}, Fredrik Wiklund²⁵, Henrik Grönberg²⁵, Sonja I. Berndt¹⁹, Stephen J. Chanock¹⁹, Fredrick Schumacher²⁶, Christopher A. Haiman²⁶, Brian E. Henderson²⁶, Ali Amin Al Olama⁸, Irene L. Andrulis²⁷, John L. Hopper²⁸, Jenny Chang-Claude²⁹, Esther M. John^{30,33}, Kathleen E. Malone¹¹, Marilie D. Gammon³¹, Giske Ursin³², Alice S. Whittemore³³, David J. Hunter¹⁰, Stephen B. Gruber³⁴, Julia A. Knight^{35,36,37}, Lifang Hou³⁸, Loic Le Marchand³⁹, Polly A. Newcomb^{11,40}, Thomas J. Hudson⁴¹, Andrew T. Chan^{42,43}, Li Li⁴⁴, Michael O. Woods⁴⁵, Habibul Ahsan^{1,2,3,4} and Brandon L. Pierce^{1,2,4,*}, on behalf of GECCO and the GAME-ON Network: CORECT, DRIVE, ELLIPSE, FOCI, and TRICL

¹Department of Public Health Sciences, ²Center for Cancer Epidemiology and Prevention, ³Department of Medicine, ⁴Department of Human Genetics, The University of Chicago, Chicago, IL, USA, ⁵Section of Biostatistics and Epidemiology, ⁶Center for Genomic Medicine, Department of Community and Family Medicine, Geisel School of Medicine, Dartmouth College, Lebanon, NH, USA, ⁷Department of Public Health and Primary Care, ⁸Centre for Cancer Genetic Epidemiology, Department of Public Health and Primary Care, University of Cambridge, Cambridge, UK, ⁹Lunenfeld-Tanenbaum Research Institute of Mount Sinai Hospital, Toronto, Canada, ¹⁰Department of Epidemiology, Harvard School of Public Health, Boston, MA, USA, ¹¹Division of Public Health Sciences, Fred Hutchinson Cancer Research Center, Seattle, WA, USA, ¹²Department of Cancer Epidemiology, H. Lee Moffitt Cancer Center, Tampa, FL, USA, ¹³Department of Genetics, QIMR Berghofer Medical Research Institute, Brisbane, Australia, ¹⁴Department of Genetic Epidemiology, University Medical Center, Georg-August-University Göttingen, Göttingen, Germany, ¹⁵Division of Epigenomics and Cancer Risk Factors, DKFZ, German Cancer Research Center, ¹⁶Translational Lung Research Center Heidelberg (TLRC-H), Member of the German Center for

Received: December 22, 2014. Revised: June 3, 2015. Accepted: June 25, 2015

© The Author 2015. Published by Oxford University Press.

This is an Open Access article distributed under the terms of the Creative Commons Attribution License (<http://creativecommons.org/licenses/by/4.0/>), which permits unrestricted reuse, distribution, and reproduction in any medium, provided the original work is properly cited.

Lung Research (DZL), Heidelberg, Germany, ¹⁷International Agency for Research on Cancer, Lyon, France, ¹⁸Division of Genetics and Epidemiology, Institute of Cancer Research, Sutton, Surrey, UK, ¹⁹Division of Cancer Epidemiology and Genetics, National Cancer Institute, National Institutes of Health, U.S. Public Health Service, Bethesda, MD, USA, ²⁰Institute of Epidemiology I, Helmholtz Zentrum München, German Research Center for Environmental Health, Neuherberg, Germany, ²¹The Institute of Cancer Research, Sutton, UK, ²²Royal Marsden National Health Service (NHS) Foundation Trust, London and Sutton, UK, ²³Warwick Medical School, University of Warwick, Coventry, UK, ²⁴Institute of Population Health, University of Manchester, Manchester, UK, ²⁵Department of Medical Epidemiology and Biostatistics, Karolinska Institute, Stockholm, Sweden, ²⁶Department of Preventive Medicine, Keck School of Medicine, University of Southern California/Norris Comprehensive Cancer Center, Los Angeles, CA, USA, ²⁷Molecular Genetics/Laboratory Medicine and Pathobiology, Mount Sinai Hospital, University of Toronto, Toronto, Canada, ²⁸Centre for Epidemiology and Biostatistics, Melbourne School of Population and Global Health, The University of Melbourne, Parkville, Australia, ²⁹Division of Cancer Epidemiology, German Cancer Research Center (DKFZ), Heidelberg, Germany, ³⁰Cancer Prevention Institute of California, Fremont, CA, USA, ³¹Department of Epidemiology, University of North Carolina School of Public Health, Chapel Hill, NC, USA, ³²Kreftregisteret, Cancer Registry of Norway, Oslo, Norway, ³³Stanford University School of Medicine, Stanford, CA, USA, ³⁴USC Norris Comprehensive Cancer Center, University of Southern California, Los Angeles, CA, USA, ³⁵Ontario Cancer Genetics Network, Fred A. Litwin Center for Cancer Genetics, Samuel Lunenfeld Research Institute, Mount Sinai Hospital, Toronto, ON, Canada, ³⁶Division of Epidemiology, Dalla Lana School of Public Health, University of Toronto, Toronto, ON, Canada, ³⁷Samuel Lunenfeld Research Institute, Mount Sinai Hospital, Toronto, ON, Canada, ³⁸Department of Preventive Medicine, Northwestern University, Chicago, IL, USA, ³⁹Epidemiology Program, University of Hawaii Cancer Center, Honolulu, HI, USA, ⁴⁰Department of Epidemiology, University of Washington School of Public Health, Seattle, WA, USA, ⁴¹Ontario Institute for Cancer Research, Toronto, ON, Canada, ⁴²Division of Gastroenterology, Massachusetts General Hospital and Harvard Medical School, Boston, MA, USA, ⁴³Channing Division of Network Medicine, Brigham and Women's Hospital and Harvard Medical School, Boston, MA, USA, ⁴⁴Department of Family Medicine and Community Health, Case Western Reserve University, Cleveland, OH, USA and ⁴⁵Discipline of Genetics, Faculty of Medicine, Memorial University, Newfoundland and Labrador, Canada

*To whom correspondence should be addressed at: Department of Public Health Sciences, The University of Chicago, 5841 S. Maryland Ave. MC2000, Chicago, IL 60637, USA. Tel: +1 7737021917; Fax: +1 7738340139; Email: brandonpierce@uchicago.edu

Abstract

Epidemiological studies have reported inconsistent associations between telomere length (TL) and risk for various cancers. These inconsistencies are likely attributable, in part, to biases that arise due to post-diagnostic and post-treatment TL measurement. To avoid such biases, we used a Mendelian randomization approach and estimated associations between nine TL-associated SNPs and risk for five common cancer types (breast, lung, colorectal, ovarian and prostate cancer, including subtypes) using data on 51 725 cases and 62 035 controls. We then used an inverse-variance weighted average of the SNP-specific associations to estimate the association between a genetic score representing long TL and cancer risk. The long TL genetic score was significantly associated with increased risk of lung adenocarcinoma ($P = 6.3 \times 10^{-15}$), even after exclusion of a SNP residing in a known lung cancer susceptibility region (*TERT-CLPTM1L*) $P = 6.6 \times 10^{-6}$). Under Mendelian randomization assumptions, the association estimate [odds ratio (OR) = 2.78] is interpreted as the OR for lung adenocarcinoma corresponding to a 1000 bp increase in TL. The weighted TL SNP score was not associated with other cancer types or subtypes. Our finding that genetic determinants of long TL increase lung adenocarcinoma risk avoids issues with reverse causality and residual confounding that arise in observational studies of TL and disease risk. Under Mendelian randomization assumptions, our finding suggests that longer TL increases lung adenocarcinoma risk. However, caution regarding this causal interpretation is warranted in light of the potential issue of pleiotropy, and a more general interpretation is that SNPs influencing telomere biology are also implicated in lung adenocarcinoma risk.

Introduction

Telomeres are DNA-protein complexes at chromosome ends that help maintain genome stability by protecting DNA from damage and fusion. The DNA component is a six-base TTAGGG repeat sequence that shortens with each cell division. In differentiated

cells, telomere shortening eventually leads to loss of telomere protection and genome instability, typically triggering cell senescence or programmed cell death (1). In stem and progenitor cells, the telomerase enzyme elongates telomeres, enabling prolonged cell survival (2). Telomerase is also activated in >90%

of human tumors (3), which typically have short telomeres (a potential cause of genome instability), thus promoting proliferation and survival (4).

The critical role of telomeres and telomerase in carcinogenesis has led to the hypothesis that short telomere length (TL) is a risk factor for cancer (5). Indeed, short relative TL measured in surrogate tissues, such as peripheral blood cells, has been associated with increased risk for lung (6,7), ovarian (8), colorectal (9) and breast cancers (10,11) in epidemiological studies (with the interpretation that blood TL predicts cancer risk because it is a proxy for TL in cancer-prone tissues). However, such associations are not consistent across all cancers or even within cancer types, with some studies reporting null, U-shaped or positive associations (11–16). Furthermore, due to the retrospective nature of case–control studies from which many of these association estimates are obtained, telomere shortening that occurs after diagnosis, potentially due to treatment (17,18) or disease progression, can result in biased estimates of the association between TL and cancer risk (6,8,14).

Table 1. Sample sizes for cancer types included in the Genetic Associations and Mechanisms in Oncology (GAME-ON) consortium. Details on the GAME-ON Network and the contributing GWA studies have been previously described (26) (<http://epi.grants.cancer.gov/gameon/>)

Cancer type	Cases	Controls	GWA studies ^a
Breast			
All	15 748	18 084	11
ER-negative	4939	13 128	8
Colorectal	5100	4831	6
Lung ^b			
All	12 160	16 838	9
Adenocarcinoma	3718	15 871	9
Squamous	3422	16 015	9
Ovarian			
All	4369	9123	3
Clear-cell	356	9123	3
Endometrioid	715	9123	3
Serous	2556	9123	3
Prostate			
All	14 160	12 724	6
Aggressive	4450	12 724	6

^aNot including studies from the Genetics and Epidemiology of Colorectal Cancer Consortium (GECCO).

^bSubtypes listed do not represent all subtypes within cancer type.

Table 2. Characteristics of genetic variants associated with TL as reported in prior GWA studies

SNP identifier	Chromosome	Locus	'Long' allele	β estimate ^a	P-value	Source
rs10936599	3	TERC	C	0.117	2.5×10^{-31}	Codd et al. (19)
rs2736100	5	TERT	C	0.094	4.4×10^{-19}	Codd et al. (19)
rs7726159 ^b	5	TERT	A	0.073	4.7×10^{-17}	Pooley et al. (21)
rs7675998	4	NAF1	G	0.090	4.3×10^{-16}	Codd et al. (19)
rs9420907	10	OBFC1	C	0.083	6.9×10^{-11}	Codd et al. (19)
rs6772228	3	PXK	T	0.120	3.9×10^{-10}	Pooley et al. (21)
rs8105767	19	ZNF208	G	0.058	1.1×10^{-9}	Codd et al. (19)
rs755017	20	RTEL1	G	0.074	6.7×10^{-9}	Codd et al. (19)
rs412658 ^c	19	ZNF676	T	0.050	9.8×10^{-9}	Mangino et al. (20)
rs3027234	17	CTC1	C	0.057	2.3×10^{-8}	Mangino et al. (20)
rs11125529	2	ACYP2	A	0.067	4.5×10^{-8}	Codd et al. (19)

^aReported in kb telomere per 'long' allele.

^bIn linkage disequilibrium ($r^2 = 0.382$) with rs2736100 of the TERT locus, excluded from all analyses.

^cIn linkage disequilibrium ($r^2 = 0.704$) with rs8105767 of the ZNF208 locus, excluded from all analyses.

Genome-wide association (GWA) studies have identified several genomic regions containing variants associated with TL in peripheral blood cells (19–21), including the TERT (telomerase reverse transcriptase) region (5p15.33). Furthermore, GWA studies of cancer risk have observed that variants in the TERT region influence risk for multiple cancer types, including breast (22), colorectal (23), lung (24), prostate (24) and ovarian (22) cancer, although these associations do not appear to all be driven by the same causal variant. In light of this evidence indicating an important role for telomeres in carcinogenesis, we undertook a comprehensive examination of associations between genetic determinants of TL and cancer risk.

In this work, we describe the associations between nine TL-associated genetic variants and risk for five cancer types (breast, lung, colorectal, ovarian and prostate), using data from the Genetic Associations and Mechanisms in Oncology (GAME-ON) network of consortia for post-GWA research. In addition, we estimate the association between a multi-variant TL score and cancer risk, which corresponds to the effect of TL on cancer risk under Mendelian randomization assumptions (25). However, this interpretation requires caution because the validity of the Mendelian randomization assumptions (such as the absence of pleiotropy) cannot be proven.

Because genotype–phenotype associations are not vulnerable to biases caused by reverse causation or confounding by environment, the Mendelian randomization approach used in this study is an attractive approach for estimating relationships between TL and cancer risk.

Results

The Genetic Associations and Mechanisms in Oncology (GAME-ON) Consortium is a network of five consortia focused on cancers of the breast, colon, lung, ovary and prostate. The GAME-ON network represents 33 GWA studies contributing data on >51 000 cancer cases and >62 000 controls (26). Samples sizes for each cancer type and subtype are listed in Table 1.

Association estimates for individual SNPs

Based on the existing literature, we identified nine SNPs showing genome-wide significant associations ($P < 5 \times 10^{-8}$) with TL in GWA studies (19–21). From these prior papers we obtained the identifier for the lead SNP at each reported locus as well as the 'long TL' allele, association estimate for the 'long' allele (in

terms of kb of TL per allele), and the standard error and *P*-value for each SNP's association with TL (Table 2). We estimated associations between each of the nine TL-associated SNPs and risk for each of the five common cancer types and subtypes in the GAME-ON study, shown as forest plots in Supplementary Material, Figure S1. Of note, for all nine SNPs, the long TL allele had an OR > 1 for lung adenocarcinoma, with four of the nine associations being statistically significant ($P < 0.05$) (Fig. 1, top left). In contrast, no TL-associated SNP was significantly associated with squamous cell carcinoma of the lung (Fig. 1, bottom left). Prostate cancer risk also showed nominally significant positive associations with the long TL alleles for three of the nine SNPs ($P < 0.05$) (Supplementary Material, Fig. S1).

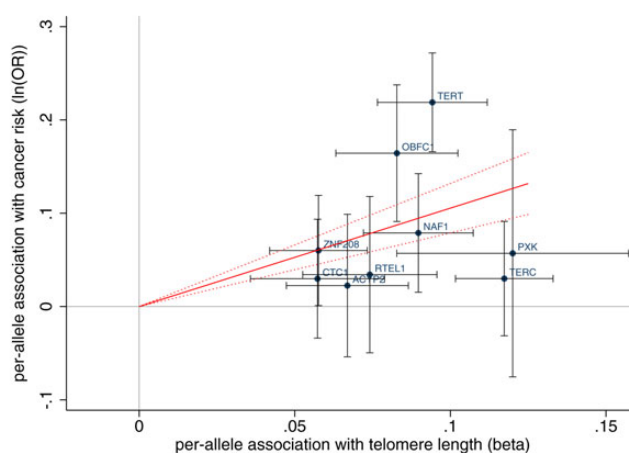
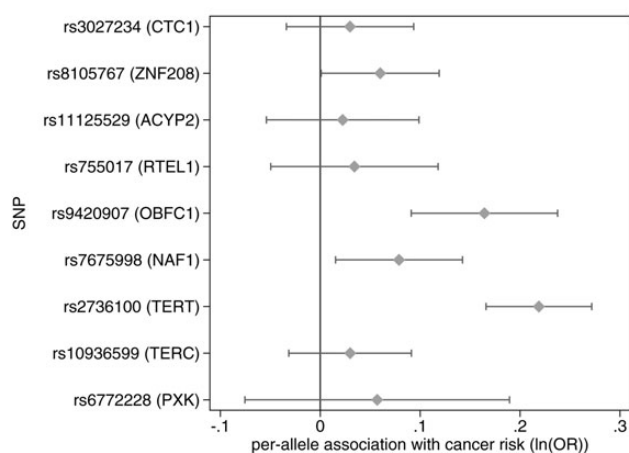
Mendelian randomization estimates based on multi-SNP scores

We estimated the associations between a multi-SNP TL score and risk for each cancer (Table 3) using a previously described Mendelian randomization approach that obtains an estimate using an inverse-variance weighted average of SNP-specific associations (27,28) (see Materials and Methods). Of note, we identified

a highly statistically significant association between long TL and increased risk of lung adenocarcinoma with an odds ratio (OR) of 2.78 per 1 kb increase TL [95% confidence interval (CI) 2.16, 3.58; $P = 6.3 \times 10^{-15}$]. However, we observed no such association for squamous cell carcinoma of the lung. Associations for these two lung cancer subtypes are displayed in Figure 1 (right) as solid red lines (slope = $\ln(\text{OR})$) overlaid on the association estimates for the nine SNPs that were used to generate the OR. A positive slope indicates that longer TL is associated with increased cancer risk, while a negative slope indicates that longer TL is associated with decreased risk. The correlation (*r*) between the magnitude of the SNPs' associations with TL and the magnitude of the SNPs' associations with adenocarcinoma risk was 0.17. Other than lung adenocarcinoma, no other cancer types showed a statistically significant association with the multi-SNP score. However, prostate cancer risk showed suggestive evidence of positive association with long TL with a Mendelian randomization OR of 1.21 per 1 kb increase in TL (95% CI 0.99, 1.46; $P = 0.06$). Scatter plots for all cancer types are displayed in Supplementary Material, Figure S2.

Additional age- and sex-stratified analyses were conducted for overall lung cancer, with findings indicating similar estimates

Adenocarcinoma



Squamous cell carcinoma

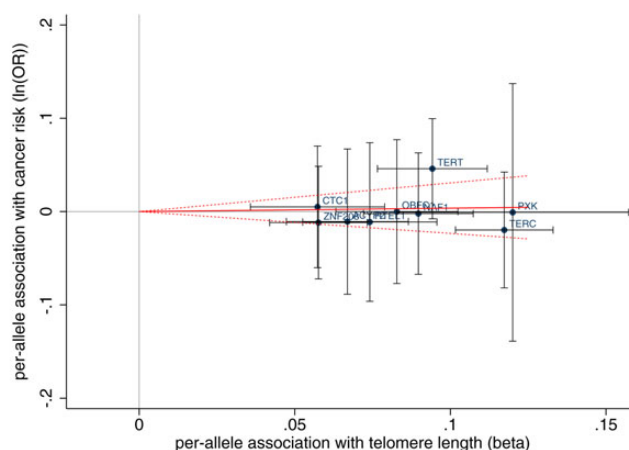
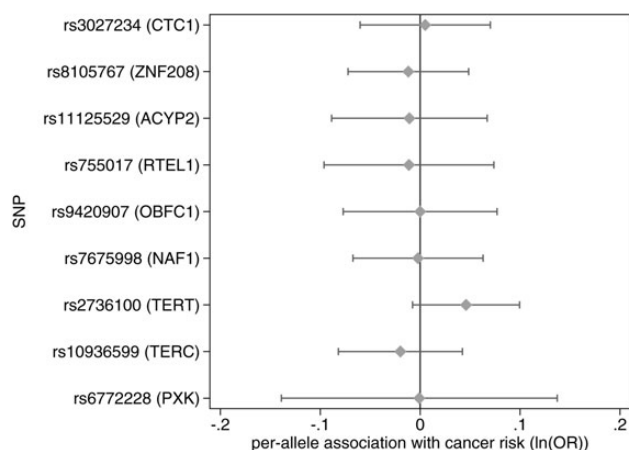


Figure 1. Forest plots (left) and scatter plots (right) of associations between TL-associated SNPs and risk for lung adenocarcinoma (top) and squamous cell carcinoma (bottom). Forest plots show association estimates (with horizontal bars indicating 95% CI) for the 'long telomere' allele of each SNP with cancer risk. SNPs are ordered by increasing magnitude of association with TL. Scatter plots show the per-allele association with cancer risk plotted against the per-allele association with kb of TL (with vertical and horizontal black lines showing 95% cCI for each SNP). The scatter plot is overlaid with the Mendelian randomization estimate (slope of red solid line with dotted lines showing 95% CI) of the effect of TL on cancer risk

Table 3. ORs of cancer risk per 1000 bp increase in TL according to a multi-SNP TL score using the inverse-variance weighted method (left) and the likelihood method (right)

Cancer type	Inverse-variance weighted method			Likelihood method		
	OR	95% CI	P-value	OR	95% CI	P-value
Breast						
All	1.02	0.86, 1.21	0.82	1.02	0.86, 1.21	0.81
ER-negative	1.05	0.81, 1.38	0.70	1.05	0.80, 1.38	0.70
Colorectal	1.25	0.92, 1.69	0.15	1.26	0.92, 1.71	0.15
Lung						
All	1.65	1.39, 1.96	1.3×10^{-8}	1.67	1.40, 2.00	1.3×10^{-8}
Adenocarcinoma	2.87	2.20, 3.74	6.3×10^{-15}	3.03	2.29, 4.01	8.2×10^{-15}
Squamous	1.04	0.79, 1.36	0.79	1.04	0.79, 1.36	0.79
Ovarian						
All	1.13	0.87, 1.47	0.37	1.13	0.87, 1.48	0.36
Clear-cell	1.65	0.78, 3.51	0.19	1.68	0.78, 3.61	0.19
Endometrioid	1.30	0.75, 2.24	0.35	1.30	0.75, 2.25	0.35
Serous	1.19	0.86, 1.65	0.30	1.19	0.86, 1.66	0.29
Prostate						
All	1.21	0.99, 1.46	0.06	1.22	1.00, 1.48	0.06
Aggressive	1.10	0.83, 1.45	0.52	1.10	0.83, 1.46	0.51

for younger subjects (≤ 50 years old) (OR = 1.95; 95% CI 1.19, 3.21; $P = 0.008$) and older subjects (> 50 years old) (OR = 1.78; 95% CI 1.47, 2.15; $P = 2.98 \times 10^{-9}$) and similar estimates for men (OR = 1.72; 95% CI 1.38, 2.14; $P = 1.06 \times 10^{-6}$) and women (OR = 1.99; 95% CI 1.42, 2.77; $P = 5.3 \times 10^{-5}$).

In addition to the inverse-variance weighted approach for obtaining Mendelian randomization estimates, we also used a likelihood-based Mendelian randomization method (28). Both methods produced very similar estimates for all cancer types, although the lung adenocarcinoma estimates varied more between the two methods compared with the other cancer types (Table 3).

Sensitivity analyses

The estimates reported above can only be interpreted as the causal effect of average TL on cancer risk when the Mendelian randomization assumptions are valid—namely, when (1) the SNPs from the literature are truly predictive of TL in the cancer-prone tissue, (2) the SNPs are not associated with other factors (confounders) that influence both TL and cancer risk and (3) the SNPs only affect cancer risk through their effects on TL, i.e. there are no alternative causal pathways by which the SNPs influence cancer risk. Violation of any of the assumptions can result in a biased causal estimate for the effect of TL on cancer risk. We performed sensitivity analyses in which SNPs were excluded from the multi-SNP score based on potential violation of these assumptions.

To assess a potential violation of the first assumption, an additional analysis was performed after excluding the SNP near the PXX region (rs6772228), which may be a false-positive association evidenced by its lack of plausible biological explanation, and the lack of consistency in its association with TL across several study sites (21). This 'strict' analysis resulted in a notable difference only for prostate cancer risk, which now showed a statistically significant estimate (OR 1.27; 95% CI 1.03, 1.54; $P = 0.02$) (Supplementary Material, Table S1).

To assess potential violation of the second and third assumptions, an additional analysis was performed including only SNPs for which the magnitude of association with cancer risk appeared to be proportional to the magnitude of association with TL. Under Mendelian Randomization assumptions two and three, the ratio of the SNP-cancer association to the SNP-TL association for each

SNP should be similar for all SNPs used in the SNP score. An inflation of the ratio for any single SNP may be an indication that the SNP exerts a pleiotropic effect on cancer that is unrelated to its effect on TL. Deviation from this expectation is tested using a goodness-of-fit test (29,30), in which SNPs that exhibit evidence of pleiotropy due to an inflated SNP-cancer to SNP-TL ratio can be detected and excluded from Mendelian randomization analyses (see Materials and Methods).

The exclusion of SNPs that failed the goodness-of-fit test (Supplementary Material, Table S2) resulted in two notable findings (Supplementary Material, Table S1). First, exclusion of the SNPs in the TERT and CTC1 regions from the SNP set used for overall prostate cancer resulted in a stronger, statistically significant association (OR = 1.45; 95% CI 1.18, 1.82; $P = 7.9 \times 10^{-4}$). Second, the exclusion of the SNP in the TERT region from the SNP set used for lung adenocarcinoma resulted in a somewhat attenuated association, but the association remained statistically significant: (OR = 2.00, 95% CI 1.48, 2.70, $P = 6.6 \times 10^{-6}$). Lung adenocarcinoma had a significant heterogeneity test statistic (Supplementary Material, Table S2), which likely explains why there was a difference in the estimates obtained using the inverse-variance weighted method and the likelihood method noted earlier; the optimization algorithm of the likelihood-based method can have poor convergence when the heterogeneity statistic is strongly significant (28). This difference in estimates between methods is eliminated after excluding the TERT SNP (rs2736100) that drives the heterogeneity in association estimates for lung adenocarcinoma.

Discussion

In this analysis of cancer risk across five cancer-prone organs, we observed that a multi-SNP score for long telomeres was significantly associated with increased risk of lung adenocarcinoma (but not squamous cell carcinoma) and suggestively associated with increased risk of prostate cancer. We did not observe an association between the multi-SNP score and risk of breast, colorectal or ovarian cancer (including subtypes). Under Mendelian randomization assumptions, the associations reported here can be interpreted as effects of TL on cancer risk, although caution regarding such an interpretation is warranted because the validity of these assumptions (such as the absence of pleiotropy) cannot

be proven. Our results were consistent using two different analytic approaches. After performing sensitivity analyses in which SNPs were excluded from the multi-SNP score based on potential violation of Mendelian randomization assumptions, the association with prostate cancer risk became statistically significant. In addition, the exclusion of the SNP in the *TERT* region (a known susceptibility locus for lung cancer) from the lung adenocarcinoma analysis resulted in an attenuated but still highly statistically significant association, indicating that the observed association is not solely driven by the SNP in the *TERT* region. Even after dropping the three SNPs showing nominally significant ($P < 0.05$) association with lung adenocarcinoma (in *TERT*, *OBFC1* and *NAF1*) the association is still significant ($OR = 1.54$, $P = 0.018$).

Several epidemiologic studies have examined the association between leukocyte TL and lung cancer risk. Three retrospective case-control studies reported an association between long TL and decreased lung cancer risk in US and Korean subjects (7,31,32). However, a fourth stratified retrospective case-control study showed a positive association between TL and adenocarcinoma risk but an inverse association for squamous cell carcinoma (33). In two studies with prospective TL measurement, long TL was found to be associated with increased overall lung cancer risk among Caucasian male smokers (34) and East Asian female never-smokers (13), while a large Danish general population study found no association (12). In a pooled analysis of three prospective cohort studies including the two aforementioned studies and a third study conducted in the USA, long telomeres were associated with increased lung cancer risk, and the association was present in adenocarcinoma while absent in squamous cell carcinoma (35). Consistent with findings from the prospective studies and the stratified case-control study, we observed a positive association between the long TL SNP score and lung cancer risk corresponding to an OR of 1.65 per 1000 bp TL for overall lung cancer ($P = 1.3 \times 10^{-8}$) and an OR of 2.87 per 1000 bp TL for lung adenocarcinoma ($P = 6.3 \times 10^{-15}$) (assuming valid Mendelian randomization assumptions). Seow *et al.* (35) reported the risk of overall lung cancer between the lowest quartile and highest quartile as $OR = 1.86$ (95% CI 1.33–2.62), and the risk of adenocarcinoma cancer as $OR = 2.52$ (95% CI 1.38–4.60). While our estimates are not directly comparable to these prior estimates due to differences in the scale of the TL variable (kb vs. quartiles), we used a simple simulation to show that our estimates are similar to these prior estimates. We simulated normally distributed TL variables with a mean of 6000 bp and standard deviations ranging from 400 to 700 bp based on values observed from the prior literature (36–38). The difference between the mean values for quartiles one and four ranged between 1018 and 1781 bp. We then rescaled our ORs to correspond to a difference in 1018–1781 bp rather than 1000 bp. The resulting estimates are $OR = 1.68$ –2.94 for overall lung cancer risk between the lowest and highest quartiles, and $OR = 2.92$ –5.11 for lung adenocarcinoma risk between the lowest and highest quartiles. These are comparable with the estimates reported by Seow *et al.* The observed heterogeneity in our association estimates is likely due to the two subtypes being biologically distinct, having previously been characterized as having different genetic susceptibilities (39), unique gene expression profiles (40), distinct molecular features (41) and different patterns of chromosomal imbalance (42).

The Asian female non-smokers among whom a TL-lung cancer association was observed (13) were also recently studied to evaluate seven TL-associated SNPs in relation to lung cancer risk (43). Consistent with our findings, the risk score for long TL was associated with an increase in lung cancer. Furthermore,

their stratified analyses suggested a stronger association among younger individuals (<60 years old) and significant associations for both adenocarcinoma and squamous cell subtypes. In contrast, our stratified analyses produced similar estimates by age and different estimates by subtype. Potential factors driving these differences in findings may be differences in ancestry or differences in the etiology of subtypes between the two study populations.

A protective effect of short TL on lung cancer risk has a biologically plausible explanation, as short telomeres could protect against cancer by triggering cell senescence or programmed cell death in the presence of functional cell cycle checkpoints and intact apoptotic pathways (44). Conversely, long telomeres may enable additional rounds of cell division, allowing more opportunities for the accumulation of somatic mutations that promote carcinogenesis, resulting in greater susceptibility to malignant transformation (45,46). The association between long TL SNPs and increased risk has also been previously observed for melanoma (47), with a proposed mechanism being that long telomeres increase the proliferative duration of cells, thus delaying senescence and allowing further mutations to occur (48).

Cigarette smoking is a potential confounder in many epidemiologic studies of TL and cancer due to its correlation with short TL (49). However, our study utilizes genetic variants associated with TL as proxy for actual measured TL, and is therefore not subject to the potential confounding effects of smoking and other exposures. TL-outcome confounders such as smoking would only introduce bias if the genetic variants used in the score are also associated with smoking behavior, as it would be a violation of the second Mendelian randomization assumption. Smoking-related violation of Mendelian randomization assumptions (e.g., SNPs that influence TL through smoking behavior) is unlikely due to the lack of an association between the TL SNP score and squamous cell carcinoma of the lung, which would be expected to have a stronger association with smoking-related SNPs than adenocarcinoma (50), and due to the lack of evidence that these SNPs influence smoking behavior based on prior GWA studies.

There are few published studies on TL and prostate cancer risk. In a small retrospective case-control study (51) and two prospective studies (12,52), no statistically significant association was observed. In contrast, we observe a suggestive association between long TL and increased risk for prostate cancer, an association that increases in significance in the context of the 'goodness-of-fit'-based sensitivity analyses. This finding warrants further investigation.

Results from prior studies of TL and colorectal cancer risk are also inconsistent. An inverse association between TL and colorectal cancer risk was described in two case-control studies (9,14), while a U-shaped association (16) and three null-associations (12,14,15) were observed in prospective studies. Consistent with the previous null-findings, our results show no significant association between TL and colorectal cancer risk, despite the inclusion of the *TERC* rs10936599 SNP, which was previously reported to be associated with both increased TL and increased risk of colorectal cancer (53). The null findings were also consistent in an analysis of data from the Genetics and Epidemiology of Colorectal Cancer Consortium (GECCO) (54) (Supplementary Material, Fig. S3).

Although one prospective study showed evidence for association between long TL and increased breast cancer risk (12), two different meta-analyses of TL and breast cancer risk based on multiple retrospective and prospective studies concluded

there was no overall evidence of association (6,8). Our findings for overall breast cancer are in agreement with these prior null studies. In addition, we observe no association between the TL SNP score and ER-negative breast cancer risk. For ovarian cancer, two prior case-control studies observed an association between longer telomeres and decreased risk (55,56), one case-control study reported no association (57), while a prospective study also reported no association (12). Our results for overall ovarian cancer, as well as three subtypes, provide no evidence of association with TL-associated SNPs. This lack of association is observed despite the inclusion of SNP rs2736100 located in the *TERT* region, which showed a nominally significant association with the serous subtype of ovarian cancer ($P = 0.023$) and is in high LD ($r^2 = 0.8$) with a SNP previously observed to be associated with ovarian cancer (22). Estrogen has been demonstrated in experimental studies to have positive effects on telomerase activity (58), and in epidemiologic studies estrogen has been shown to have a positive association with TL (59). With estrogen as a potential confounder of the association between TL and ER-positive breast and ovarian cancers, it will likely be difficult to parse out the specific role of TL in estrogen-related cancer risk in epidemiological studies. However, Mendelian randomization estimates such as those reported here will not be biased due to confounding by estrogen level. These multi-SNP null findings are similar to what Pooley et al. (21) also observed while investigating individual TL SNP associations with breast, ovarian and prostate cancer risks.

Although it is not possible to prove the validity of the Mendelian randomization assumptions, it is possible to conduct sensitivity analyses to protect against some potential violations of these assumptions. To address a potential violation of the first assumption—that the SNPs are associated with TL in our study population—we conducted analyses excluding PXX SNP rs6772228, whose association with TL has been questioned due to the lack of consistency in its association across several study sites (21). After exclusion, the results were essentially unchanged. For overall prostate cancer, however, the association became statistically significant, lending support to the hypothesis that long TL is associated with an increased risk of prostate cancer.

To address potential violations of the assumption that the SNPs do not have effects on cancer risk independent of their effects on TL, we re-estimated the associations between the TL SNP score and cancer after stepwise removal of potentially problematic SNPs from the SNP set using a goodness-of-fit test of the proportionality of the SNPs' associations with TL and cancer risk. These exclusions resulted in some attenuation of the association with lung adenocarcinoma, but did not substantially alter our conclusions. For prostate cancer, the association with the multi-SNP score became statistically significant after excluding *TERT* SNP rs2736100 and *CTC1* SNP rs3027234. The heterogeneity in association of SNPs in *TERT* and *CTC1* identified by the goodness-of-fit test suggests potential pleiotropic effects of these genetic variants through mechanisms other than TL. The association between *TERT* SNPs and breast and ovarian cancer risks via pathways other than TL has been previously observed (22), and potential extra-telomeric roles have previously been suggested for both telomerase (60) and *CTC1* (61), providing a plausible biological basis for excluding the *TERT* and *CTC1* SNPs from our analysis. It is important to note however, that these secondary sensitivity analyses are data-driven, and are presented as a supplement to the primary analyses that include all nine SNPs.

There are several limitations of this work. The summary-level data did not allow for analyses stratified by covariates of interest such as sex and age (with the exception of lung cancer, for which TRICL conducted stratified analyses). Additionally, our analysis

assumed a log-linear association between TL and cancer risk, and the existence of a non-linear (e.g. U-shaped) association may limit our ability to detect an association. Our estimates generated using Mendelian randomization are unbiased only if the SNPs analyzed do not affect cancer risk through causal pathways other than those involving TL. This assumption cannot be proven; however, our confidence in the validity of this assumption is strengthened by the fact that our primary finding is robust to the exclusion of SNPs with potential pleiotropic actions based on prior evidence (*TERT*) and a goodness-of-fit test (Supplementary Material, Tables S1, S2) (although it is possible that the goodness-of-fit test is underpowered to identify pleiotropic effects). Our power to detect associations is limited by the small variance in measured TL explained by SNPs used in this analysis (1–2%) (62), although the GAME-ON Network provides very large sample sizes that enable the detection of strong-to-moderate associations (Supplementary Material, Table S3). Finally, we cannot confirm that genetic determinants of leukocyte TL also predict tissue-specific TL due to the lack of tissue-based TL measures in GWA studies. A potential consequence of selecting SNPs lacking tissue-specific association with TL would be a bias toward the null, reducing our power to detect associations using TL SNP scores. However, correlations between TL measured in blood and TL measured in lung (63,64) and other tissues (65) have been reported ($r = 0.35–0.84$), consistent with the assumption that SNPs predict TL across multiple tissues. Systematic studies on other tissue types are needed to further address this uncertainty.

In conclusion, in this comprehensive Mendelian randomization study of TL and risk for common cancers, we observed a highly significant association between genetic determinants of long TL and increased risk for lung adenocarcinoma. The estimates reported here are not vulnerable to biases caused by reverse causation or confounding by unmeasured environmental factors, strengthening the evidence for a causal role for TL in lung adenocarcinoma. However, the validity of Mendelian randomization estimates is dependent upon several assumptions, namely no pleiotropic effects (independent of TL) of SNPs on the cancer risk or confounders of the TL-cancer relationship. The multi-SNP score for TL should be further investigated as a predictor of adenocarcinoma of the lung, a common lung cancer subtype in both smokers and non-smokers. Future research efforts need to be undertaken to determine the value of telomeres as a novel risk measure or a modifiable pharmacological target, with the long-term goal of improving cancer prediction and prevention.

Materials and Methods

The GAME-ON network of consortia for post-GWA research

The goals of the GAME-ON consortium were to pool data from GWA studies to identify new loci, conduct functional studies to identify causal SNPs and biological mechanisms, and to investigate gene-gene and gene-environment interactions as a part of efforts to develop risk prediction models. A secondary goal was to test hypotheses across the centers that might illuminate common mechanisms of susceptibility. Details of GAME-ON and the participating studies are available at <http://epi.grants.cancer.gov/gameon/>, and described previously (26).

Identification of SNPs associated with TL

We identified nine SNPs showing independent genome-wide significant associations ($P < 5 \times 10^{-8}$) with TL in previously published

GWA studies among individuals of European ancestry (19–21). Although there are specific cancer susceptibility regions of interest such as the previously described *TERT* locus, our selection of SNPs is based entirely on the SNPs' ability to predict TL based on prior literature, because predictive accuracy is directly related to statistical power for Mendelian randomization (62). The proportion of variance in measured average TL that is explained by individual SNPs ranges from 0.06 to 0.2% (19), and is up to 1.6% for a combined subset of four SNPs (20) (no estimate is currently available for all nine SNPs). Based on the existing literature, we obtained the identifier for the lead SNP at each reported locus as well as the 'long TL' allele, association estimate for the 'long' allele (in terms of kb increase in TL per allele), standard error and *P*-value for each SNP's association with TL (Table 2). Only the lead SNP from each region was included in the analysis. Although the estimates for these nine SNPs were obtained from three different studies using two different methods (quantitative PCR and Southern blot of the terminal restriction fragment), we scaled the estimates to the same units (kb of TL per risk allele). Comparability between studies is supported by previous studies showing that T/S ratio from qPCR using the Cawthon method is strongly correlated with mean terminal restriction fragment obtained from Southern blot for non-extreme TL values (66). Data on these nine SNPs were available as summary statistics for all cancer types analyzed in the GAME-ON consortium, with the exception of colorectal cancer, for which we obtained proxy SNPs based on strong linkage disequilibrium using the Broad Institute's SNP Annotation and Proxy Search tool (67) (Supplementary Material, Table S4).

Statistical analysis

For each cancer type, standard fixed-effects meta-analysis methods were used to combine results from individual GWA studies. For each cancer type, genotyping was performed using Illumina or Affymetrix arrays of varying densities described elsewhere (26). Quality control steps taken include gender identity and chromosomal anomaly check, exclusion of related individuals, principal component-based exclusion of individuals of non-European ancestry, exclusion of SNPs and individuals with substantial missingness, exclusion of SNPs in Hardy–Weinberg disequilibrium, and other sample and SNP quality measures. For each study, imputation was performed using the 1000 Genomes Project Phase 1 version 3 reference haplotypes, resulting in up to ~10 million SNPs being available for the analysis for each cancer type.

Associations between SNPs and cancer risk were estimated using unconditional logistic regression adjusted for age, sex (when applicable) and top principal components (ranging from 2 to 6 across 48 contributing GWA studies). For the lung cancer study, the association was also adjusted for smoking pack-years. We performed the analyses separately for cancer subtypes, including breast (estrogen receptor negative), lung (adenocarcinoma and squamous cell), ovarian (clear cell, endometrioid and serous) and prostate [aggressive and non-aggressive as previously defined (68)]. We performed age- and sex-stratified analyses for overall lung cancer, for which only SNPs imputed to the Illumina 500 K array using the HapMap2 reference panel were available across all sites. For the TL SNPs not available on the 500 K array, we were able to identify tag SNPs ($r^2 > 0.8$) for all SNPs except PXX SNP rs6772228 (Supplementary Material, Table S5).

We estimated the association between a multi-SNP TL score and risk for each cancer using two different Mendelian randomization methods that require only summarized association

estimates for each SNP (hence, no actual score is created for each individual, but we estimated the association that would be observed for such as score if individual-level data were used). This approach is appropriate given that the consortium provides only summary estimates rather than individual-level data for SNP associations. The first method is an inverse-variance weighted average of SNP-specific associations that has been described previously (27,28). The Mendelian randomization estimate $\hat{\beta}_{IVW}$, and its standard error $SE(\hat{\beta}_{IVW})$ were calculated using the following equations:

$$\hat{\beta}_{IVW} = \frac{\sum_k X_k Y_k \sigma_{Y_k}^{-2}}{\sum_k X_k^2 \sigma_{Y_k}^{-2}}, \quad (1)$$

$$SE(\hat{\beta}_{IVW}) = \sqrt{\frac{1}{\sum_k X_k^2 \sigma_{Y_k}^{-2}}}, \quad (2)$$

where X_k is the per-allele estimate of the k th SNP on TL, Y_k is the per-allele estimate of the SNP on the log-odds of cancer and σ_{Y_k} is the corresponding standard error. A schematic summarizing the aforementioned steps is shown in Supplementary Material, Figure S4.

The second method is a likelihood-based method that has been described previously (28). In brief, TL and cancer risk were jointly modeled using a bivariate normal distribution for each genetic variant. The model parameters, including a joint linear effect between TL and cancer log-odds, were estimated using maximum likelihood on the observed data. The likelihood-based analyses were performed using web-based software (<http://spark.rstudio.com/sb452/summarized/>) (28).

The estimates obtained from the methods described above can be interpreted as the effect of average TL on cancer risk under the following assumptions as previously described for causal inference based on Mendelian randomization (25): (1) the SNPs from the literature are truly predictive of TL in the cancer-prone tissue, (2) the SNPs are not associated with other factors (confounders) that influence both TL and cancer risk and (3) the SNPs only affect cancer risk through their effects on TL, i.e. there are no alternative causal pathways by which the SNPs influence cancer risk.

To visualize the association results for the SNP score, we plotted the association between each SNP and cancer risk against associations with TL (based on the prior literature). Under the assumption that a SNP's association with TL is proportional to its association with cancer risk, one would expect the plotted points to fall along a line that passes through the origin and has a slope equal to the Mendelian randomization estimate. Thus, a steeper slope indicates a stronger magnitude of association between TL and cancer risk. Conversely assuming no causal effect of TL on cancer risk, the Mendelian randomization estimate would correspond to a slope of zero.

To assess a potential violation of the first assumption (i.e., a true association between each of the variant and TL), an additional analysis was performed after excluding the SNP near the PXX region (rs6772228), which may be a false-positive association evidenced by its lack of plausible biological explanation, and the lack of consistency in its association with TL across several study sites (21). This analysis is referred to as the 'strict' analysis. To assess potential violation of the second and third assumptions (i.e., no confounding or pleiotropy), a goodness-of-fit test was performed for each SNP set under the null hypothesis that each SNP included in the SNP score has an association with cancer risk that is proportional to its association with TL. The rejection

of the null hypothesis indicated heterogeneity of the associations between SNPs and cancer risk relative to the associations between the SNPs and TL. In instances where the null hypothesis was rejected, stepwise removal of SNPs from the SNP set was performed until there was no significant heterogeneity, based on a method previously described (<http://cran.r-project.org/web/packages/gtx/>) (29). Specifically, For K uncorrelated SNPs,

$$X_k^2 = \sum_k Y_k^2 \sigma_{Y_k}^{-2}, \quad (3)$$

$$X_{rs}^2 = \left(\frac{\hat{\beta}_{TW}}{SE(\hat{\beta}_{TW})} \right)^2, \quad (4)$$

in which X_k^2 and X_{rs}^2 are $\chi_{(k)}^2$ and $\chi_{(1)}^2$ distributed test statistics, respectively, for the association between each cancer type and all K SNPs under an unconstrained K degree-of-freedom model, and for the nested 1 degree-of-freedom risk score model, respectively. Then the goodness-of-fit test statistic is

$$Q_{rs} = X_k^2 - X_{rs}^2, \quad (5)$$

in which Q_{rs} is $\chi_{(k-1)}^2$ distributed under the null hypothesis that all K SNPs are associated with cancer risk with true association sizes proportional to the associations with TL. For each analysis in which the goodness-of-fit test null hypothesis was rejected ($P < 0.05$), we removed the SNP that resulted in the greatest reduction of the Q_{rs} test statistic, and repeated the goodness-of-fit test. If still $P < 0.05$, we repeated the exclusion procedure until $P > 0.05$. The association estimates obtained from the subsequent analysis using the remaining SNPs that pass the goodness-of-fit test is referred to as the 'goodness-of-fit based' estimates and displayed in Supplementary Material, Table S1. P -values for the goodness-of-fit test before and after exclusion of SNPs, and which SNPs were excluded for each cancer analysis for the 'goodness-of-fit based' analysis are shown in Supplementary Material, Table S2. An example for this procedure is as follows: for lung adenocarcinoma, the inclusion of all nine SNPs results in an OR of 2.87 ($P = 6.3 \times 10^{-15}$), but the goodness-of-fit test P -value of 9.0×10^{-6} indicates the presence of heterogeneity with at least one of the SNPs used in the SNP score. The TERT SNP was identified to be the SNP contributing the most to this heterogeneity (by stepwise exclusion), and once removed, resulted in a SNP score with a goodness-of-fit P -value of 0.09, indicating a lack of substantial heterogeneity in ratio of SNP-cancer to SNP-telomere associations across SNPs. After exclusion of the TERT SNP, we still observe a significant association in the same direction, albeit attenuated (OR = 2.00, $P = 6.6 \times 10^{-6}$).

We performed power analyses to estimate the minimum detectable magnitude of association for each cancer type given the sample sizes available in the GAME-ON study, in terms of OR per 1 kb increase in TL. This was done using a web-based application (<http://glimmer.rstudio.com/kn3in/mRnd/>) (69), specifying 80% power, 0.05 type I error rate, and assuming the variance in TL explained by the nine SNPs is $R^2 = 0.01$ or $R^2 = 0.02$, respectively. Because the web application calculates the detectable OR of cancer risk per one standard deviation of TL, which is roughly equivalent to 500 bp (36,37), we exponentiated this OR to the power of 0.5 in order to obtain the detectable OR per 1000 bp increase TL. (Supplementary Material, Table S3).

Supplementary Material

Supplementary Material is available at HMG online.

Funding

This work was supported by the Genetic Associations and Mechanisms in Oncology Network, GAME-ON: Discovery, Biology, and Risk of Inherited Variants in Breast Cancer, DRIVE, PI: D.J.H. (U19 CA148065); Colorectal Transdisciplinary Study, CORECT, PI: S.B.G. (U19 CA148107); Transdisciplinary Research in Cancer of the Lung, TRICL, PI: C.A. (U19 CA148127); Follow-up of ovarian cancer genetic association and interaction studies, FOCI, PI: T.A. S. (U19 CA148112); Elucidating Loci Involved in Prostate Cancer Susceptibility, ELLIPSE, PI: B.E.H. (U19 CA148537); Genetics and Epidemiology of Colorectal Cancer Consortium, GECCO: National Cancer Institute, National Institutes of Health, US Department of Health and Human Services (U01 CA137088, R01 CA059045); National Institute of Health, National Institute on Aging (T32AG000243; P30AG012857) to C.Z.; Cancer Research Foundation Young Investigator Award, R01 ES020506, and U01 HG007601 to BLP; The Wellcome Trust (100114) to S.B.; The NHMRC Senior Principal Research Fellow to G.C.T. Funding to pay the Open Access publication charges for this article was provided by the University of Cambridge (COAF Open Access block grant).

Conflict of Interest statement. None declared

References

1. D'Adda di Fagnana, F. (2008) Living on a break: cellular senescence as a DNA-damage response. *Nat. Rev. Cancer*, **8**, 512–522.
2. Shawi, M. and Autexier, C. (2008) Telomerase, senescence and ageing. *Mech. Ageing Dev.*, **129**, 3–10.
3. Stewart, S.A. and Weinberg, R.A. (2006) Telomeres: cancer to human aging. *Annu. Rev. Cell Dev. Biol.*, **22**, 531–557.
4. O'Sullivan, R.J. and Karlseder, J. (2010) Telomeres: protecting chromosomes against genome instability. *Nat. Rev. Mol. Cell Biol.*, **11**, 171–181.
5. Willeit, P., Willeit, J., Mayr, A., Weger, S., Oberhollenzer, F., Brandstätter, A., Kronenberg, F. and Kiechl, S. (2010) Telomere length and risk of incident cancer and cancer mortality. *J. Am. Med. Assoc.*, **304**, 69–75.
6. Ma, H., Zhou, Z., Wei, S., Liu, Z., Pooley, K.A., Dunning, A.M., Svenson, U., Roos, G., Hosgood, H.D. III, Shen, M. et al. (2011) Shortened telomere length is associated with increased risk of cancer: a meta-analysis. *PLoS One*, **6**, e20466.
7. Jang, J.S., Choi, Y.Y., Lee, W.K., Choi, J.E., Cha, S.I., Kim, Y.J., Kim, C.H., Kam, S., Jung, T.H. and Park, J.Y. (2008) Telomere length and the risk of lung cancer. *Cancer Sci.*, **99**, 1385–1389.
8. Wentzensen, I.M., Mirabello, L., Pfeiffer, R.M. and Savage, S.A. (2011) The association of telomere length and cancer: a meta-analysis. *Cancer Epidemiol. Biomarkers Prev.*, **20**, 1238–1250.
9. Qin, Q., Sun, J., Yin, J., Liu, L., Chen, J., Zhang, Y., Li, T., Shi, Y., Wei, S. and Nie, S. (2014) Telomere length in peripheral blood leukocytes is associated with risk of colorectal cancer in Chinese population. *PLoS One*, **9**, e88135.
10. Shen, J., Gammon, M.D., Terry, M.B., Wang, Q., Bradshaw, P., Teitelbaum, S.L., Neugut, A.I. and Santella, R.M. (2009) Telomere length, oxidative damage, antioxidants and breast cancer risk. *Int. J. Cancer*, **124**, 1637–1643.
11. Qu, S., Wen, W., Shu, X.-O., Chow, W.-H., Xiang, Y.-B., Wu, J., Ji, B.-T., Rothman, N., Yang, G., Cai, Q. et al. (2013) Association of leukocyte telomere length with breast cancer risk: nested case-control findings from the Shanghai Women's Health Study. *Am. J. Epidemiol.*, **177**, 617–624.
12. Weischer, M., Nordestgaard, B.G., Cawthon, R.M., Freiberg, J.J., Tybjaerg-Hansen, A. and Bojesen, S.E. (2013) Short telomere

- length, cancer survival, and cancer risk in 47102 individuals. *J. Natl. Cancer Inst.*, **105**, 459–468.
13. Lan, Q., Cawthon, R., Gao, Y., Hu, W., Hosgood, H.D. III, Barone-Adesi, F., Ji, B.-T., Bassig, B., Chow, W.-H., Shu, X. et al. (2013) Longer telomere length in peripheral white blood cells is associated with risk of lung Cancer and the rs2736100 (CLPTM1L-TERT) polymorphism in a Prospective Cohort Study among women in China. *PLoS One*, **8**, e59230.
 14. Pooley, K.A., Sandhu, M.S., Tyrer, J., Shah, M., Driver, K.E., Luben, R.N., Bingham, S.A., Ponder, B.A.J., Pharoah, P.D.P., Khaw, K.-T. et al. (2010) Telomere length in prospective and retrospective cancer case-control studies. *Cancer Res.*, **70**, 3170–3176.
 15. Zee, R.Y.L., Castonguay, A.J., Barton, N.S. and Buring, J.E. (2009) Mean telomere length and risk of incident colorectal carcinoma: a prospective, nested case-control approach. *Cancer Epidemiol. Biomarkers Prev.*, **18**, 2280–2282.
 16. Cui, Y., Cai, Q., Qu, S., Chow, W.-H., Wen, W., Xiang, Y.-B., Wu, J., Rothman, N., Yang, G., Shu, X.-O. et al. (2012) Association of leukocyte telomere length with colorectal cancer risk: nested case-control findings from the Shanghai Women's Health Study. *Cancer Epidemiol. Biomarkers Prev.*, **21**, 1807–1813.
 17. Lee, J.-J., Nam, C.-E., Cho, S.-H., Park, K.-S., Chung, I.-J. and Kim, H.-J. (2003) Telomere length shortening in non-Hodgkin's lymphoma patients undergoing chemotherapy. *Ann. Hematol.*, **82**, 492–495.
 18. Schroder, C.P., Wisman, G.B.A., de Jong, S., van der Graaf, W.T. A., Ruiters, M.H.J., Mulder, N.H., de Leij, L.F.M.H., van der Zee, A.G.J. and de Vries, E.G.E. (2001) Telomere length in breast cancer patients before and after chemotherapy with or without stem cell transplantation. *Br. J. Cancer*, **84**, 1348–1353.
 19. Codd, V., Nelson, C.P., Albrecht, E., Mangino, M., Deelen, J., Buxton, J.L., Hottenga, J.J., Fischer, K., Esko, T., Surakka, I. et al. (2013) Identification of seven loci affecting mean telomere length and their association with disease. *Nat. Genet.*, **45**, 422–427.
 20. Mangino, M., Hwang, S.-J., Spector, T.D., Hunt, S.C., Kimura, M., Fitzpatrick, A.L., Christiansen, L., Petersen, I., Elbers, C. C., Harris, T. et al. (2012) Genome-wide meta-analysis points to CTC1 and ZNF676 as genes regulating telomere homeostasis in humans. *Hum. Mol. Genet.*, **21**, 5385–5394.
 21. Pooley, K.A., Bojesen, S.E., Weischer, M., Nielsen, S.F., Thompson, D., Amin Al Olama, A., Michailidou, K., Tyrer, J.P., Benlloch, S., Brown, J. et al. (2013) A genome-wide association scan (GWAS) for mean telomere length within the COGS project: identified loci show little association with hormone-related cancer risk. *Hum. Mol. Genet.*, **22**, 5056–5064.
 22. Bojesen, S.E., Pooley, K.A., Johnatty, S.E., Beesley, J., Michailidou, K., Tyrer, J.P., Edwards, S.L., Pickett, H.A., Shen, H.C., Smart, C.E. et al. (2013) Multiple independent variants at the TERT locus are associated with telomere length and risks of breast and ovarian cancer. *Nat. Genet.*, **45**, 371–384.
 23. Peters, U., Hutter, C., Hsu, L., Schumacher, F., Conti, D., Carlson, C., Edlund, C., Haile, R., Gallinger, S., Zanke, B. et al. (2012) Meta-analysis of new genome-wide association studies of colorectal cancer risk. *Hum. Genet.*, **131**, 217–234.
 24. Rafnar, T., Sulem, P., Stacey, S.N., Geller, F., Gudmundsson, J., Sigurdsson, A., Jakobsdottir, M., Helgadóttir, H., Thorlacius, S., Aben, K.K.H. et al. (2009) Sequence variants at the TERT-CLPTM1L locus associate with many cancer types. *Nat. Genet.*, **41**, 221–227.
 25. Didelez, V. and Sheehan, N. (2007) Mendelian randomization as an instrumental variable approach to causal inference. *Stat. Methods Med. Res.*, **16**, 309–330.
 26. Kaminski, B.M., Amos, C.I., DeRycke, E., Gillanders, E.M., Gruber, S.B., Henderson, B.E., Hunter, D.J., Lepage, P.K., Sellers, T. A. and Seminara, D. (2012) Genetic Associations and Mechanisms in Oncology (GAME-ON): A network approach to post-GWAS research. *Cancer Epidemiol. Biomarkers Prev.*, **21**, 78–78.
 27. Dastani, Z., Hivert, M.-F., Timpson, N., Perry, J.R.B., Yuan, X., Scott, R.A., Henneman, P., Heid, I.M., Kizer, J.R., Lyytikäinen, L.-P. et al. (2012) Novel loci for adiponection levels and their influence on Type 2 diabetes and metabolic traits: a multi-ethnic meta-analysis of 45,891 individuals. *PLoS Genet.*, **8**, e1002607.
 28. Burgess, S., Butterworth, A. and Thompson, S.G. (2013) Mendelian randomization analysis with multiple genetic variants using summarized data. *Genet. Epidemiol.*, **37**, 658–665.
 29. Johnson, T. (2012) *Efficient Calculation for Multi-SNP Genetic Risk Scores*. Poster presentation, American Society of Human Genetics Annual Meeting, San Francisco, CA.
 30. Burgess, S., Scott, R., Timpson, N., Davey Smith, G. and Thompson, S. (2015) Using published data in Mendelian randomization: a blueprint for efficient identification of causal risk factors. *Eur. J. Epidemiol.*, doi:10.1007/s10654-015-0011-z
 31. Wu, X., Amos, C.I., Zhu, Y., Zhao, H., Grossman, B.H., Shay, J. W., Luo, S., Hong, W.K. and Spitz, M.R. (2003) Telomere dysfunction: a potential cancer predisposition factor. *J. Natl. Cancer Inst.*, **95**, 1211–1218.
 32. Hosgood, H.D. III, Cawthon, R., He, X., Chanock, S. and Lan, Q. (2009) Genetic variation in telomere maintenance genes, telomere length, and lung cancer susceptibility. *Lung Cancer*, **66**, 157–161.
 33. Sanchez-Espiridon, B., Chen, M., Chang, J.Y., Lu, C., Chang, D. W., Roth, J.A., Wu, X. and Gu, J. (2014) Telomere length in peripheral blood leukocytes and lung cancer risk: a large case-control study in Caucasians. *Cancer Res.*, **74**, 2476–2486.
 34. Shen, M., Cawthon, R., Rothman, N., Weinstein, S.J., Virtamo, J., Hosgood, H.D. III, Hu, W., Lim, U., Albanes, D. and Lan, Q. (2011) A prospective study of telomere length measured by monochrome multiplex quantitative PCR and risk of lung cancer. *Lung Cancer*, **73**, 133–137.
 35. Seow, W.J., Cawthon, R.M., Purdue, M.P., Hu, W., Gao, Y.-T., Huang, W.-Y., Weinstein, S.J., Ji, B.-T., Virtamo, J., Hosgood, H.D. et al. (2014) Telomere length in white blood cell DNA and lung cancer: a pooled analysis of three prospective cohorts. *Cancer Res.*, **74**, 4090–4098.
 36. Shaffer, J.A., Epel, E., Kang, M.S., Ye, S., Schwartz, J.E., Davidson, K.W., Kirkland, S., Honig, L.S. and Shimbo, D. (2012) Depressive Symptoms are not associated with leukocyte telomere length: findings from the Nova Scotia Health Survey (NSHS95), a population-based study. *PLoS One*, **7**, e48318.
 37. Puterman, E., Lin, J., Krauss, J., Blackburn, E.H. and Epel, E.S. (2015) Determinants of telomere attrition over 1 year in healthy older women: stress and health behaviors matter. *Mol. Psychiatry*, **20**, 529–535.
 38. Valdes, A., Andrew, T., Gardner, J., Kimura, M., Oelsner, E., Cherkas, L., Aviv, A. and Spector, T. (2005) Obesity, cigarette smoking, and telomere length in women. *The Lancet*, **366**, 662–664.
 39. Timofeeva, M.N., Hung, R.J., Rafnar, T., Christiani, D.C., Field, J.K., Bickeböller, H., Risch, A., McKay, J.D., Wang, Y., Dai, J. et al. (2012) Influence of common genetic variation on lung cancer risk: meta-analysis of 14 900 cases and 29 485 controls. *Hum. Mol. Genet.*, **21**, 4980–4995.
 40. Daraselia, N., Wang, Y., Budoff, A., Lituev, A., Potapova, O., Vansant, G., Monforte, J., Mazo, I. and Ossovskaya, V.S. (2012) Molecular signature and pathway analysis of human primary squamous and adenocarcinoma lung cancers. *Am. J. Cancer Res.*, **2**, 98–103.

41. Sekido, Y., Fong, K.M. and Minna, J.D. (2003) Molecular genetics of lung cancer. *Annu. Rev. Med.*, **54**, 73–87.
42. Petersen, I., Bujard, M., Petersen, S., Wolf, G., Goeze, A., Schwendel, A., Langreck, H., Gellert, K., Reichel, M., Just, K. et al. (1997) Patterns of chromosomal imbalances in adenocarcinoma and squamous cell carcinoma of the lung. *Cancer Res.*, **57**, 2331–2335.
43. Machiela, M.J., Hsiung, C.A., Shu, X.-O., Seow, W.J., Wang, Z., Matsuo, K., Hong, Y.-C., Seow, A., Wu, C., Hosgood, H.D. et al. (2015) Genetic variants associated with longer telomere length are associated with increased lung cancer risk among never-smoking women in Asia: a report from the female lung cancer consortium in Asia. *Int. J. Cancer*, **137**, 311–319.
44. d'Adda di Fagnagna, F., Reaper, P.M., Clay-Farrace, L., Fiegler, H., Carr, P., von Zglinicki, T., Saretzki, G., Carter, N.P. and Jackson, S.P. (2003) A DNA damage checkpoint response in telomere-initiated senescence. *Nature*, **426**, 194–198.
45. Bull, C.F., Mayrhofer, G., O'Callaghan, N.J., Au, A.Y., Pickett, H. A., Low, G.K.M., Zeegers, D., Hande, M.P. and Fenech, M.F. (2014) Folate deficiency induces dysfunctional long and short telomeres; both states are associated with hypomethylation and DNA damage in human WIL2-NS cells. *Cancer Prev. Res. Phila. Pa*, **7**, 128–138.
46. Halaschek-Wiener, J., Vulto, I., Fornika, D., Collins, J., Connors, J.M., Le, N.D., Lansdorp, P.M. and Brooks-Wilson, A. (2008) Reduced telomere length variation in healthy oldest old. *Mech. Ageing Dev.*, **129**, 638–641.
47. Iles, M.M., Bishop, D.T., Taylor, J.C., Hayward, N.K., Brossard, M., Cust, A.E., Dunning, A.M., Lee, J.E., Moses, E.K., Akslen, L. A. et al. (2014) The effect on melanoma risk of genes previously associated with Telomere Length. *J. Natl. Cancer Inst.*, **106**, doi: 10.1093/jnci/dju267.
48. Bataille, V., Kato, B.S., Falchi, M., Gardner, J., Kimura, M., Lens, M., Perks, U., Valdes, A.M., Bennett, D.C., Aviv, A. et al. (2007) Nevus Size and number are associated with telomere length and represent potential Markers of a decreased senescence in vivo. *Cancer Epidemiol. Biomarkers Prev.*, **16**, 1499–1502.
49. Aviv, A., Chen, W., Gardner, J.P., Kimura, M., Brimacombe, M., Cao, X., Srinivasan, S.R. and Berenson, G.S. (2009) Leukocyte telomere dynamics: longitudinal findings among young adults in the Bogalusa Heart Study. *Am. J. Epidemiol.*, **169**, 323–329.
50. Lubin, J.H. and Blot, W.J. (1984) Assessment of lung cancer risk factors by histologic category. *J. Natl. Cancer Inst.*, **73**, 383–389.
51. Hurwitz, L.M., Heaphy, C.M., Joshu, C.E., Isaacs, W.B., Konishi, Y., De Marzo, A.M., Isaacs, S.D., Wiley, K.E., Platz, E.A. and Meeker, A.K. (2014) Telomere length as a risk factor for hereditary prostate cancer. *The Prostate*, **74**, 359–364.
52. Mirabello, L., Huang, W.-Y., Wong, J.Y.Y., Chatterjee, N., Reding, D., David Crawford, E., De Vivo, I., Hayes, R.B. and Savage, S.A. (2009) The association between leukocyte telomere length and cigarette smoking, dietary and physical variables, and risk of prostate cancer. *Ageing Cell*, **8**, 405–413.
53. Jones, A.M., Beggs, A.D., Carvajal-Carmona, L., Farrington, S., Tenesa, A., Walker, M., Howarth, K., Ballereau, S., Hodgson, S.V., Zuber, A. et al. (2012) TERC polymorphisms are associated both with susceptibility to colorectal cancer and with longer telomeres. *Gut*, **61**, 248–254.
54. Peters, U., Jiao, S., Schumacher, F.R., Hutter, C.M., Aragaki, A.K., Baron, J.A., Berndt, S.I., Bézieau, S., Brenner, H., Butterbach, K. et al. (2013) Identification of genetic susceptibility loci for colorectal tumors in a genome-wide meta-analysis. *Gastroenterology*, **144**, 799–807.e24.
55. Martinez-Delgado, B., Yanowsky, K., Inglada-Perez, L., de la Hoya, M., Caldes, T., Vega, A., Blanco, A., Martin, T., Gonzalez-Sarmiento, R., Blasco, M. et al. (2012) Shorter telomere length is associated with increased ovarian cancer risk in both familial and sporadic cases. *J. Med. Genet.*, **49**, 341–344.
56. Mirabello, L., Garcia-Closas, M., Cawthon, R., Lissowska, J., Brinton, L., Peplowska, B., Sherman, M. and Savage, S. (2010) Leukocyte telomere length in a population-based case-control study of ovarian cancer: a pilot study. *Cancer Causes Control*, **21**, 77–82.
57. Terry, K.L., Twohoger, S.S., Vitonis, A.F., Wong, J., Titus-Ernstoff, L., De Vivo, I. and Cramer, D.W. (2012) Telomere length and genetic variation in telomere maintenance genes in relation to ovarian cancer risk. *Cancer Epidemiol. Biomarkers Prev.*, **21**, 504–512.
58. Kyo, S., Takakura, M., Kanaya, T., Zhuo, W., Fujimoto, K., Nishio, Y., Orimo, A. and Inoue, M. (1999) Estrogen activates telomerase. *Cancer Res.*, **59**, 5917–5921.
59. Lin, J., Kroenke, C.H., Epel, E., Kenna, H.A., Wolkowitz, O.M., Blackburn, E. and Rasgon, N.L. (2011) Greater endogenous estrogen exposure is associated with longer telomeres in postmenopausal women at risk for cognitive decline. *Window Oppor. Menopause Estrogens Brain*, **1379**, 224–231.
60. Martínez, P. and Blasco, M.A. (2011) Telomeric and extra-telomeric roles for telomerase and the telomere-binding proteins. *Nat. Rev. Cancer*, **11**, 161–176.
61. Anderson, B.H., Kasher, P.R., Mayer, J., Szykiewicz, M., Jenkinson, E.M., Bhaskar, S.S., Urquhart, J.E., Daly, S.B., Dickerson, J.E., O'Sullivan, J. et al. (2012) Mutations in CTC1, encoding conserved telomere maintenance component 1, cause Coats plus. *Nat Genet*, **44**, 338–342.
62. Pierce, B.L., Ahsan, H. and Vanderweele, T.J. (2011) Power and instrument strength requirements for Mendelian randomization studies using multiple genetic variants. *Int. J. Epidemiol.*, **40**, 740–752.
63. Saferali, A., Lee, J., Sin, D.D., Rouhani, F.N., Brantly, M.L. and Sandford, A.J. (2014) Longer telomere length in COPD patients with α 1-antitrypsin deficiency independent of lung function. *PLoS One*, **9**, e95600.
64. Alder, J.K., Chen, J.J.-L., Lancaster, L., Danoff, S., Su, S., Cogan, J.D., Vulto, I., Xie, M., Qi, X., Tuder, R.M. et al. (2008) Short telomeres are a risk factor for idiopathic pulmonary fibrosis. *Proc. Natl. Acad. Sci.*, **105**, 13051–13056.
65. Daniali, L., Benetos, A., Susser, E., Kark, J.D., Labat, C., Kimura, M., Desai, K.K., Granick, M. and Aviv, A. (2013) Telomeres shorten at equivalent rates in somatic tissues of adults. *Nat. Commun.*, **4**, 1597.
66. Aviv, A., Hunt, S.C., Lin, J., Cao, X., Kimura, M. and Blackburn, E. (2011) Impartial comparative analysis of measurement of leukocyte telomere length/DNA content by Southern blots and qPCR. *Nucleic Acids Res.*, **39**, e134–e134.
67. Johnson, A.D., Handsaker, R.E., Pulit, S.L., Nizzari, M.M., O'Donnell, C.J. and de Bakker, P.I.W. (2008) SNAP: a web-based tool for identification and annotation of proxy SNPs using HapMap. *Bioinformatics*, **24**, 2938–2939.
68. Eeles, R.A., Olama, A.A.A., Benlloch, S., Saunders, E.J., Leongamornlert, D.A., Tymrakiewicz, M., Ghoussaini, M., Luccarini, C., Dennis, J., Jugurnauth-Little, S. et al. (2013) Identification of 23 new prostate cancer susceptibility loci using the iCOGS custom genotyping array. *Nat. Genet.*, **45**, 385–391, 391e1–2.
69. Brion, M.-J.A., Shakhbuzov, K. and Visscher, P.M. (2013) Calculating statistical power in Mendelian randomization studies. *Int. J. Epidemiol.*, **42**, 1497–1501.