

ARTICLE

Received 20 Jul 2015 | Accepted 6 Oct 2015 | Published 6 Nov 2015

DOI: 10.1038/ncomms9804

OPEN

# Meta-analysis identifies seven susceptibility loci involved in the atopic march

Ingo Marenholz *et al.*<sup>#</sup>

Eczema often precedes the development of asthma in a disease course called the 'atopic march'. To unravel the genes underlying this characteristic pattern of allergic disease, we conduct a multi-stage genome-wide association study on infantile eczema followed by childhood asthma in 12 populations including 2,428 cases and 17,034 controls. Here we report two novel loci specific for the combined eczema plus asthma phenotype, which are associated with allergic disease for the first time; rs9357733 located in *EFHC1* on chromosome 6p12.3 (OR 1.27;  $P = 2.1 \times 10^{-8}$ ) and rs993226 between *TMTC2* and *SLC6A15* on chromosome 12q21.3 (OR 1.58;  $P = 5.3 \times 10^{-9}$ ). Additional susceptibility loci identified at genome-wide significance are *FLG* (1q21.3), *IL4/KIF3A* (5q31.1), *AP5B1/OVOL1* (11q13.1), *C11orf30/LRRC32* (11q13.5) and *IKZF3* (17q21). We show that predominantly eczema loci increase the risk for the atopic march. Our findings suggest that eczema may play an important role in the development of asthma after eczema.

Correspondence and requests for materials should be addressed to Y.A.L. (email: yolee@mdc-berlin.de).  
<sup>#</sup>A full list of authors and their affiliations appears at the end of the paper.

The atopic or allergic march describes the sequential progression of different allergic conditions frequently observed in children with IgE-antibody responses against common environmental allergens (atopy)<sup>1,2</sup>. Generally, eczema (atopic dermatitis) is the first clinical manifestation of the atopic march followed by asthma and/or allergic rhinitis. About 20–30% of infants with eczema undergo this unfavourable disease course, which is associated with severe and persistent allergic disease manifestations<sup>3,4</sup>.

In recent years, the concept of the atopic march has received increasing attention<sup>5–7</sup>. Multiple progression patterns have been discussed as allergic conditions may manifest in different orders<sup>1</sup>. A breakthrough in the understanding of the atopic march was the discovery of the filaggrin loss-of-function mutations that provided genetic evidence linking skin barrier deficiency to eczema and subsequent asthma development<sup>8,9</sup>.

We aimed to identify the genetic factors underlying the atopic march in a genome-wide association study (GWAS). We used the most common phenotype representing the atopic march, which is eczema followed by asthma<sup>10</sup>. In the discovery phase, six GWASs were included and another six populations were used for replication. Our meta-analysis identifies seven susceptibility loci at genome-wide significance of which two are associated with allergic disease for the first time. In addition, we find an overrepresentation of eczema loci among the atopic march loci. Deciphering the molecular determinants of the atopic march may point to novel therapeutic approaches to prevent or at least arrest the atopic march.

## Results

**Meta-GWAS of the discovery populations.** To identify genes involved in the atopic march, we performed GWASs in six populations including 1,151 cases and 10,030 controls of European descent, and meta-analysed the results (Supplementary Fig. 1; Supplementary Table 1). We used a strict phenotype definition focusing on individuals with early-onset eczema (up to 3 years of age) and childhood asthma (up to 16 years of age; Supplementary Table 2). Association with disease was calculated by logistic regression using an additive allele-dosage model. For each population of the discovery set, more than two million single nucleotide polymorphisms (SNPs) imputed from the HapMap 2 Utah Residents with Northern and Western European Ancestry (CEU) reference panel were available.

More than 1.6 million SNPs passed the quality control criteria in all study populations and remained in the meta-analysis (see Methods section). There was little evidence for inflation of test statistics ( $\lambda_{GC(meta)} = 1.07$ ,  $\lambda_{1,000} = 1.03$  (ref. 11); Supplementary Fig. 2). Several SNPs within the epidermal differentiation complex (EDC) on chromosome 1q21.3 reached genome-wide significance (Fig. 1). We found strong correlation between the lead SNP rs12081541 (odds ratio (OR) 1.61;  $P = 8.5 \times 10^{-11}$ ), and a nearby loss-of-function mutation in the filaggrin gene (*FLG* R501X,  $D' = 0.86$ ,  $r^2 = 0.18$ ), a well-known risk factor for eczema and eczema-associated asthma<sup>8,9</sup>. After adjusting for *FLG*-null mutations in the study populations with available genotypes, the association signal in the EDC disappeared (Supplementary Fig. 3), indicating that there is no additional susceptibility locus within this region.

**Replication and combined meta-analysis.** In total, 54 SNPs from regions with moderate association in the discovery set ( $1 \times 10^{-4} > P > 5 \times 10^{-8}$ ; Fig. 1) were subjected to replication in five independent study populations including 864 atopic march cases and 5,346 controls of European descent (replication set 1; Supplementary Table 1). When multiple associated SNPs were

located in the same region, we selected the best SNP per 1-Mb window. We meta-analysed the results of the study populations in replication set 1 (Supplementary Table 3) and, in addition, performed a combined meta-analysis including the discovery set. In the combined meta-analysis, four additional susceptibility loci were associated with the atopic march at genome-wide significance ( $P < 5 \times 10^{-8}$ ; Table 1).

The susceptibility loci *IL4/KIF3A* on chromosome 5 (rs17690965; OR 1.24;  $P = 4.5 \times 10^{-8}$ ) and *OVOL1* on chromosome 11 (rs479844; OR 1.25;  $P = 3.6 \times 10^{-10}$ ) were previously identified in a GWAS on eczema (Supplementary Table 4)<sup>12</sup>. In addition, the association signal near *C11orf30/LRR32* on chromosome 11 (rs2155219; OR 1.33;  $P = 1.8 \times 10^{-15}$ ) confirmed a susceptibility locus for eczema and eczema-associated asthma<sup>13,14</sup>. Finally, the chromosomal region around rs10445308 (OR 1.22;  $P = 4.7 \times 10^{-8}$ ), which is located in an intron of *IKZF3* on chromosome 17 was found previously in studies on childhood asthma<sup>15–17</sup>, self-reported allergy<sup>18</sup> and asthma plus hay fever (Supplementary Table 5)<sup>19</sup>. Regional association plots of the atopic march susceptibility regions in the populations of the discovery set are depicted in Supplementary Fig. 4.

Importantly, two novel susceptibility loci for the atopic march were identified: both variants (rs9357733 and rs993226) were significantly associated in replication set 1 after correction for multiple testing ( $P < 0.05/54$  ( $9.3 \times 10^{-4}$ ); Supplementary Table 3) but did not reach genome-wide significance in the combined analysis. Both SNPs were therefore genotyped in a second independent replication set of 413 cases and 1,658 controls from Europe (replication set 2), and reached genome-wide significance in the combined meta-analysis including all data sets (Table 1).

**Characterization of the two novel atopic march loci.** As a preliminary step towards understanding the functional basis of the novel atopic march loci, we evaluated their association with gene expression in lymphoblastoid cell lines of 373 European individuals from the 1000 Genomes Project<sup>20</sup>, reviewed their functional annotations in ENCODE Consortium (<http://genome.ucsc.edu/ENCODE/>)<sup>21</sup> and Roadmap Epigenomics Consortium data (<http://www.roadmapepigenomics.org/>)<sup>22</sup>, and surveyed relevant mouse models (<http://www.informatics.jax.org/phenotypes.shtml>)<sup>23</sup>.

On chromosome 6p12.3, rs9357733 was associated with the atopic march (OR 1.27;  $P = 2.1 \times 10^{-8}$ ; Table 1) with consistent risk allele and effect size across all study populations (Supplementary Fig. 5). It is located 20 Mb away from the established risk variants for eczema and for asthma on 6p21.3 and not in linkage disequilibrium with them. The linkage disequilibrium block around rs9357733 contains the genes encoding the progesterin and adipoQ receptor family member VIII (*PAQR8*), the EF-hand domain (C-terminal)-containing protein 1 (*EFHC1*) and the translocation associated membrane protein 2 (*TRAM2*; Supplementary Fig. 4). Strongest association was observed in intron 2 of *EFHC1*, which is ubiquitously expressed (<http://fantom.gsc.riken.jp/zenbu/>)<sup>24</sup>. We used SNAP (SNP Annotation and Proxy Search; <http://www.broadinstitute.org/mpg/snap/ldsearch.php>)<sup>25</sup> to screen for functional SNPs in linkage disequilibrium with rs9357733 and identified rs3804508 ( $r^2 = 1$ ) located in a predicted enhancer (Supplementary Fig. 6). The corresponding enhancer marks were predominantly found in cells derived from target organs of allergic disease such as skin keratinocytes, skin fibroblasts and lung fibroblasts, and were absent in immune cells.

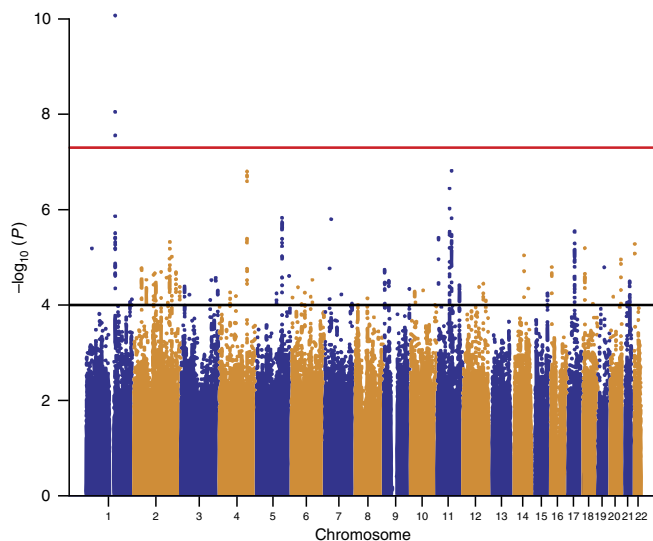
A second novel variant associated with the atopic march, rs993226 (OR 1.58;  $P = 5.3 \times 10^{-9}$ ; Table 1), is located on

chromosome 12q21.3, 1.36 Mb distal of transmembrane and tetratricopeptide repeat containing 2 (*TMTC2*) and 370 kb proximal of solute carrier family 6 (neurotransmitter transporter), member 15 (*SLC6A15*; Supplementary Fig. 4). Little is known about the more distant gene *TMT2*, which encodes a membrane protein of the endoplasmic reticulum involved in calcium homeostasis<sup>26</sup>. *SLC6A15* encodes a Na<sup>+</sup>/Cl<sup>-</sup>-dependent membrane transporter for neutral amino acids, B(0)AT2, which exhibits a specific gene expression pattern predominantly in cells derived from skin, respiratory tract and brain (<http://fantom.gsc.riken.jp/zenbu/>)<sup>24</sup>. However, there was no evidence from expression quantitative trait locus (eQTL) or epigenetic data for an involvement of rs993226 in the regulation of these genes (Supplementary Table 6).

### The role of eczema loci and asthma loci in the atopic march.

Next, we evaluated whether previously reported susceptibility loci for eczema or asthma were associated with the atopic march in our discovery meta-analysis. From the catalog of published GWASs<sup>27</sup>, we selected all SNPs which were associated with asthma or eczema at genome-wide significance level (Supplementary Tables 4 and 5), and examined association in our discovery set. All five GWAS loci previously associated with both traits (*IL6R*, *IL1RL1/IL18R1*, *RAD50*, human leukocyte antigen (HLA) region and *C11orf30*) replicated at  $P < 0.001$  in our data set. For the European susceptibility loci that were previously identified only in studies on eczema, we found the same risk alleles in our study; seven out of eight were associated with the atopic march ( $P < 0.05$ ; Supplementary Table 4). In contrast, only 3 out of 12 European loci identified only in GWAS on asthma were associated at  $P < 0.05$  (Supplementary Table 5). Moreover, ranking the known risk variants, which were specific for asthma or eczema according to their statistical significance in the discovery meta-analysis yielded a significant enrichment of eczema loci among the SNPs associated with the atopic march ( $P = 0.0078$ ; Fig. 2).

**Subphenotype analysis for the atopic march loci.** Since we studied the combined phenotype of eczema plus asthma, we



**Figure 1 | Association results of the meta-GWAS on the atopic march.**

Manhattan plot shows the  $P$  values over the chromosomal positions of all SNPs of the discovery set (1,151 cases versus 10,030 controls). Red and black lines indicate the thresholds for genome-wide significance ( $P < 5 \times 10^{-8}$ ) and for entering the replication phase ( $P < 1 \times 10^{-4}$ ), respectively.

investigated whether the identified associations were driven by either eczema or asthma. We performed this analysis in the large population-based Avon Longitudinal Study of Parents and Children (ALSPAC) birth cohort ( $n = 7,829$  genotyped individuals). The strengths of ALSPAC are longitudinal data on eczema and on asthma throughout childhood. This allowed us to define all three phenotypes (atopic march, eczema alone and asthma alone) in a single, unselected cohort and to use identical controls for all three comparisons. In line with the meta-analysis, six of seven loci were significantly associated with the atopic march ( $P < 0.05$ ) and only one locus just failed significance (Table 2). The four loci originally discovered through GWAS on eczema (*FLG*, *IL4/KIF3A*, *OVOL1* and *C11orf30/LRRC32*) did not reveal an effect on asthma alone. Compared with eczema alone, the excess risk of these loci on the atopic march was not significant (Supplementary Tables 7 and 8) although a trend for *FLG*-null mutations and the *C11orf30/LRRC32* locus was observed. For both of these loci, an effect on disease progression from eczema to asthma has previously been demonstrated<sup>9,13</sup>, suggesting that our current analysis may have lacked power to detect such an effect. The previously identified asthma locus *IKZF3* revealed a different association pattern with a stronger effect on asthma than on the atopic march. Interestingly, the two new loci conferred risk for the atopic march but not for eczema alone or asthma alone (Table 2).

**Assessment of a potential selection bias.** All cases included in this meta-analysis of the atopic march had participated in previous GWAS on eczema or asthma. Therefore, we had to rule out that the observed excess of eczema susceptibility loci was due to an overrepresentation of eczema studies. The inclusion of study populations that were originally recruited through eczema, for example, may favour the discovery of eczema loci. However, only two study populations were recruited through eczema ( $n = 402$  atopic march cases), while six were unselected ( $n = 1,137$  atopic march cases) and three were recruited through asthma ( $n = 476$  atopic march cases; Supplementary Table 9). In addition, we determined to what extent our samples contributed to the discovery of eczema loci and asthma loci in previous GWAS. Considering the cases in previous eczema and asthma GWAS, on an average only 10.8 and 11.0%, respectively, were included in the current atopic march study (Supplementary Table 10). It is therefore unlikely that the prominent role of eczema loci in our study was due to a selection bias.

### Discussion

The atopic march describes disease progression from infantile eczema to allergic airway disease in childhood and is associated with severe and persistent allergic disease manifestations. Here, we report the first GWAS on the atopic march. We identified seven genome-wide significant loci, of which two susceptibility loci, in *EFHC1* on chromosome 6p12.3 and between *TMTC2* and *SLC6A15* on chromosome 12q21.3 were associated with allergic disease for the first time.

Coding variants in *EFHC1* have been implicated in juvenile forms of epilepsy<sup>28–32</sup>. In a knockout-mouse model, reduced beating frequency of the cilia of ependymal cells in the brain due to lack of *Efhc1/myoclonin1* was identified as potential disease mechanism<sup>33</sup>. Interestingly, *Efhc1* was also detected in motile cilia of tracheal epithelium in mice<sup>34</sup>. The mucociliary epithelium is important for the defence against inhaled pathogens and allergens and ciliary dysfunction is a feature of severe asthma<sup>35</sup>. Association between epilepsies and allergic diseases in childhood has recently been demonstrated<sup>36</sup>, which may point to a common molecular mechanism or to pleiotropic effects.

**Table 1 | Association results of susceptibility loci associated with the atopic march.**

SNP ID*	Chr	Position <sup>†</sup>	EA	AA	Set <sup>‡</sup>	AF	OR	95% CI	P value	Genes
rs12081541 <sup>§</sup> (i)	1	150707990	c	t	D	0.091	1.61	1.41-1.89	$8.5 \times 10^{-11}$	CRNN/LCESA ( <i>FLG</i> )
rs17690965 (i)	5	132058566	c	g	D	0.259	1.28	1.16-1.42	$1.5 \times 10^{-6}$	<i>IL4/KIF3A</i>
					R1	0.271	1.18	1.05-1.32	$4.8 \times 10^{-3}$	
					Combined	0.264	1.24	1.15-1.33	$4.5 \times 10^{-8}$	
rs9357733 (i)	6	52400095	a	g	D	0.815	1.29	1.13-1.46	$9.5 \times 10^{-5}$	<i>EFHC1</i>
					R1	0.807	1.27	1.11-1.45	$5.1 \times 10^{-4}$	
					R2	0.792	1.22	1.01-1.47	0.038	
					Combined	0.808	1.27	1.17-1.38	$2.1 \times 10^{-8}$	
rs479844 (g)	11	65308533	g	a	D	0.558	1.28	1.16-1.41	$3.6 \times 10^{-7}$	<i>AP5B1/OVOL1</i>
					R1	0.563	1.22	1.25-1.54	$2.0 \times 10^{-4}$	
					Combined	0.560	1.25	1.24-1.43	$3.6 \times 10^{-10}$	
rs2155219 (i)	11	75976842	t	g	D	0.481	1.28	1.17-1.41	$1.5 \times 10^{-7}$	<i>C11orf30/LRRC32</i>
					R1	0.494	1.39	1.25-1.54	$1.2 \times 10^{-9}$	
					Combined	0.487	1.33	1.24-1.43	$1.8 \times 10^{-15}$	
rs993226 (g)	12	83410704	g	t	D	0.037	1.58	1.27-1.96	$4.2 \times 10^{-5}$	<i>SLC6A15/TMTC2</i>
					R1	0.033	1.59	1.23-2.04	$4.0 \times 10^{-4}$	
					R2	0.027	1.57	1.05-2.35	0.028	
					Combined	0.034	1.58	1.35-1.84	$5.3 \times 10^{-9}$	
rs10445308 (i)	17	35191573	c	t	D	0.530	1.25	1.14-1.37	$2.9 \times 10^{-6}$	<i>IKZF3</i>
					R1	0.528	1.18	1.05-1.30	$2.9 \times 10^{-3}$	
					Combined	0.529	1.22	1.14-1.30	$4.7 \times 10^{-8}$	

AA, alternative allele; AF, effect allele frequency; EA, effect allele; CI, confidence interval; OR, odds ratio.

\*(i), imputed SNP; (g), genotyped SNP.

<sup>†</sup>Genomic positions were based on human genome reference NCBI Build 36.3.

<sup>‡</sup>D, discovery set; R1, replication set 1; R2, replication set 2; combined, combined analysis of D and R1 and of D, R1 and R2 (rs9357733 and rs993226 only), respectively.

<sup>§</sup>rs12081541 represents the known *FLG* risk locus and was not subjected to replication.

SNPs in *SLC6A15* were previously associated with depression, stress-induced cortisol secretion and obesity-related phenotypes<sup>37-39</sup>. A potential functional role of *SLC6A15* in the atopic march is suggested by a recent study demonstrating selective inhibition of B(0)AT2 by the histamine H1 receptor antagonist loratadine<sup>40</sup>, which is clinically used for the treatment of allergic disease. Further studies will be necessary to elucidate a potential functional role of this genomic region. Interestingly, both novel loci revealed no effect on eczema alone or asthma alone. In agreement with these results, they were not found in previous GWAS on either trait and may represent novel disease mechanisms reinforcing the existence of a specific atopic march phenotype.

In our study, GWAS loci for eczema ranked significantly higher than asthma loci. In addition, we observed a stronger effect of the atopic march loci on eczema alone than on asthma alone for four of the five established allergic disease loci. These results suggest that genes triggering eczema are the predominant driver of the atopic march. In contrast, the majority of the GWAS loci for asthma seem to be more involved in an eczema-independent phenotype, supporting genetic heterogeneity in asthma susceptibility. This finding highlights the role of the skin as the interface between host and environment in shaping local and systemic immune responses that induce chronic inflammation and may affect distant organs in the host<sup>41</sup>. In mice, it has been demonstrated that enhanced transcutaneous penetration of allergens promotes the formation of allergen-specific IgE antibodies<sup>42,43</sup> and bronchial hyperresponsiveness<sup>43</sup>. In humans, a strong association of *FLG*-null mutations with eczema, with disease progression to asthma, but not with asthma alone is well documented<sup>8,9</sup>. This finding provided the first genetic link between the loss of a skin-specific-protein, cutaneous barrier deficiency, eczema and subsequent asthma development. Furthermore, the importance of infantile eczema in subsequent asthma susceptibility is underlined by epidemiological data in the ALSPAC cohort indicating that early eczema confers a 4.3-fold

increase in asthma risk (OR 4.33; 95% confidence interval (CI) 3.72-5.01,  $P < 0.0001$ ). A causal relationship between eczema and this asthma subtype would have important implications for interventional strategies. Since no cure for asthma exists, one might speculate that modulation of skin integrity early in infancy could be an effective strategy to prevent not only eczema but also the atopic march in a subset of patients. Recently, skin emollient therapy in neonates yielded promising results regarding eczema prevention<sup>5,44,45</sup>. However, a long-term effect on asthma in these children still remains to be demonstrated. Epidemiological studies demonstrating an increased asthma risk in children with early eczema, clearly support the concept of the atopic march and the phenotype under study<sup>46-49</sup>. In the largest study on the progression of multiple allergic diseases, 60.7% of allergic children developed eczema first<sup>10</sup>. Of all children with eczema, 86% had it as their first allergic condition, indicating that it is uncommon to develop eczema after asthma or allergic rhinitis. The development of all three conditions, eczema, asthma and allergic rhinitis was unusual occurring in only 2.3% of all children. Therefore, defining the atopic march based on all three allergic diseases may underestimate its prevalence<sup>50</sup>. Among all children with multiple allergic diseases, the single largest group were those with eczema followed by asthma (38.3%), the phenotype used in our current study.

Other atopic march patterns exist as allergic conditions may occur in different orders. In addition, since eczema and asthma are common diseases, they may also co-manifest coincidentally. Thus, the identification of known eczema and asthma loci in this study may reflect the underlying association with each disease independently. In addition, the role of less prevalent allergic manifestations in the atopic march still needs to be resolved. For food allergy, mouse models point to a potential involvement in the atopic march<sup>51,52</sup>, but robust data from longitudinal cohorts are sparse<sup>53-56</sup>.

Some limitations of our study need to be discussed. Although most of our study populations selected strict controls by the



absence of eczema and asthma, others used population-based controls with unknown disease status. Accordingly, the presence of affected individuals among controls may have decreased the power of these studies. In addition, we did not use atopy status in our meta-analysis due to missing data in some populations. Where available, atopy data were very heterogeneous between studies regarding age at testing, assay used, number of data points and allergens tested. The inclusion of atopic controls may have reduced the power to detect atopy-related genes involved in the atopic march. However, homogeneous effects of the atopic march loci across our study populations (Supplementary Fig. 5) using selected and unselected (population-based) controls pointed to a minor effect of the selection process.

We did not investigate allergic rhinitis in our study because reliable phenotype data were not available for all study populations. As a consequence, our results could be biased towards genes involved in eczema or asthma rather than allergic rhinitis. However, the only significant locus identified in GWAS

on allergic rhinitis, *C11orf30/LRRC32* (ref. 57), is a known risk factor for eczema-associated asthma and hay fever<sup>13</sup>, suggesting that similar mechanisms may be involved in the atopic march from eczema to asthma and from eczema to allergic rhinitis.

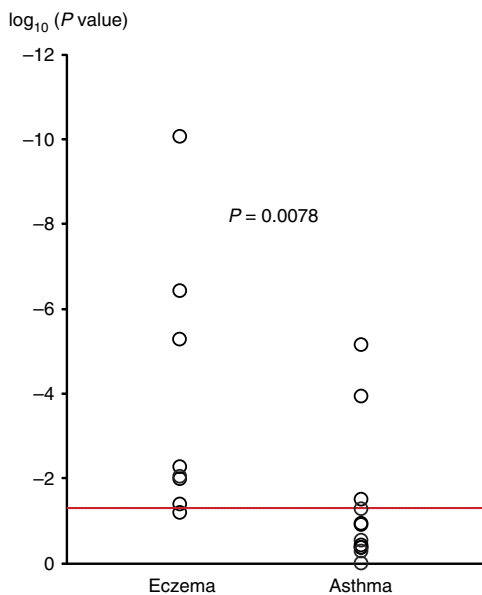
For the phenotype definition, we required early eczema to have manifested by 3 years of age and childhood asthma by 16 years. However, in several populations phenotype data were not available for the complete time periods (Supplementary Table 2). Thus, those individuals who developed eczema and asthma within the missing time window may have been lost as cases. Their misclassification as controls is unlikely because this would require that both conditions, eczema and asthma, manifested within the respective missing period. In addition, a recall bias in retrospectively collected data can give rise to a loss of cases. Although most studies relied on actual or reported doctor's diagnoses, a few studies used a parental report of disease symptoms. Again, a loss of power can be expected, but case misclassifications requiring false reports of both eczema and asthma in the same individual are unlikely.

Since we used a strict atopic march definition of early-onset eczema and childhood asthma, a relatively small number of cases fulfilled our case definition. Using a wider definition of the atopic march (defined as eczema and asthma at any age up to 16 years) nearly doubled the number of cases in the discovery set and in the first replication to 2,075 and 1,591 cases, respectively (Supplementary Table 1). Applying the same quality control criteria and selection thresholds as in the strict definition, identified only five of the seven loci without evidence of additional susceptibility regions (Supplementary Table 11). Thus, our study demonstrates that the strict definition of a severe phenotype is a successful approach for studying complex diseases.

In summary, our study revealed two novel loci, which are specific for the atopic march phenotype. In addition, we found loci that were also associated with eczema alone or asthma alone, which may reflect heterogeneity of disease mechanisms underlying the atopic march. A strong contribution of eczema genes to the atopic march suggests that the development of eczema may play an important role in this unfavourable disease course.

**Methods**

**Phenotype definition.** The term 'atopic march' refers to the sequential manifestations of different allergic diseases such as eczema, asthma and rhinitis<sup>58</sup>. Typically, eczema is the first allergic disease in infancy, followed by asthma and/or rhinitis in childhood<sup>10,48,59,60</sup>. More than 20% of the children with eczema develop asthma, making this the largest group among children with multiple allergic conditions<sup>10</sup>. Since complete longitudinal data were available only for a few study populations, we aimed to approximate the temporal component of the atopic march by using eczema up to the age of 3 years and asthma up to the age of 16 years (strict definition). For a total of 12 study populations, six of the discovery set and six of the replication set, the corresponding phenotype data were available (Supplementary Table 1). Another four study populations had no data on early eczema available. They were included in a separate analysis using a wider definition of the atopic march (childhood eczema plus asthma up to the age of 16 years).



**Figure 2 | Ranking of previous eczema and asthma GWAS hits in the atopic march discovery set.** Susceptibility loci identified in previous GWAS on eczema or on asthma at genome-wide significance ( $P < 5 \times 10^{-8}$ ) are shown with their  $P$  values in the discovery phase (circles). The red line indicates the threshold for nominally significant replication ( $P < 0.05$ ). Susceptibility loci previously associated with both traits were excluded as were loci identified only in populations of non-European descent. Two-sided  $P$  value of the Mann-Whitney  $U$ -test (<http://vassarstats.net/utest.html>) is reported.

**Table 2 | Association of the atopic march loci with eczema alone and asthma alone in the ALSPAC cohort.**

SNP ID	Chr	Locus	Original discovery*	EA	AA	Atopic march			Eczema, no asthma			Asthma, no eczema		
						OR	95% CI	P value	OR	95% CI	P value	OR	95% CI	P value
rs9357733	6	<i>EFHC1</i>	Atopic march	a	g	1.27	1.07-1.52	0.0072	0.98	0.83-1.17	0.84	0.97	0.82-1.14	0.71
rs993226	12	<i>SLC6A15/TMTC2</i>	Atopic march	g	t	1.43	1.06-1.94	0.020	0.82	0.55-1.21	0.31	0.77	0.53-1.13	0.18
<i>FLG</i> combined†	1	<i>FLG</i>	Eczema	mut	wt	2.89	2.12-3.92	$1.2 \times 10^{-11}$	1.99	1.42-2.80	$7.8 \times 10^{-5}$	0.79	0.51-1.23	0.29
rs17690965	5	<i>IL4/KIF3A</i>	Eczema	c	g	1.18	1.02-1.37	0.025	1.12	0.96-1.31	0.15	1.03	0.89-1.19	0.72
rs479844	11	<i>OVOL1</i>	Eczema	g	a	1.24	1.08-1.42	0.0019	1.24	1.07-1.43	0.0032	1.00	0.87-1.14	0.95
rs2155219	11	<i>C11orf30/LRRC32</i>	Eczema	t	g	1.23	1.08-1.39	0.0016	1.12	0.98-1.28	0.097	1.05	0.92-1.19	0.49
rs10445308	17	<i>IKZF3</i>	Asthma	c	t	1.13	0.99-1.29	0.066	0.93	0.81-1.06	0.27	1.30	1.14-1.48	$6.5 \times 10^{-5}$

AA, alternative allele; EA, effect allele; CI, confidence interval; OR, odds ratio.

\*Allergic phenotype first associated with SNP.

†ORs for *FLG* combined were estimated based on the two most frequent disease-causing mutations *FLG* R501X and *FLG* 2282del4; mut, mutated allele; wt, wild-type allele.

Controls were selected for the absence of eczema and asthma if phenotype data were available. Four data sets included unselected, population-based controls. The phenotype characteristics of each study population are summarized in Supplementary Table 2. All but one study population of the discovery set had participated in the previous GWAS on asthma performed by the GABRIEL consortium<sup>61</sup>. All study populations were of European ancestry. Informed consent was obtained from all participants or their legal guardians, and all studies were approved by the local ethics committees as indicated in the Supplementary Methods.

**Genotyping and imputation.** Genotyping and imputation of the study populations was performed in the context of the GABRIEL consortium or according to the methods described there<sup>61</sup>, if not otherwise stated. Briefly, after genotyping, an ancestry analysis was carried out using EIGENSTRAT2.0 (ref. 62) and putative non-European samples were eliminated from subsequent analyses. Genotyped SNPs for imputation had to fulfil the following quality control criteria: (1) genotype missing rate <3% in both cases and controls; (2) minor allele frequency  $\geq 1\%$  in controls; and (3) consistency with Hardy-Weinberg equilibrium by a one degree-of-freedom goodness-of-fit test in unselected controls (for case-control study populations) or in the whole population before case-control selection (for study populations derived from population-based cohorts), respectively ( $P > 1 \times 10^{-4}$ ). Imputation was carried out with MACH<sup>63</sup> or IMPUTE<sup>64</sup> using Hapmap 2 CEU SNPs (release 22, NCBI build 36) as reference.

**Association analyses.** In each study population, association between SNPs and disease was analysed by logistic regression using an additive model for genotype dosage. Imputed SNPs with a quality score of  $r^2 < 0.8$  were filtered out. For data sets comprising unrelated and related cases and controls, we used a logistic regression model with robust sandwich estimation of the variance<sup>65</sup> as implemented in the Stata logit function to model clustering of family genotypes. A detailed description of the study populations, including phenotype characteristics and genotyping platforms, and software used for imputation and logistic regression analysis is provided in the Supplementary File.

**Meta-analyses.** Meta-analyses were carried out with METAL<sup>66</sup> using the inverse variance fixed effects model. Combined ORs and 95% CIs were calculated. All SNPs with missing data in any of the study populations of the discovery set were excluded. For SNPs with a minor allele frequency of <5%, a quality score of  $r^2 \geq 0.9$  was required in all data sets, for all other SNPs one data set with  $r^2 < 0.9$  was allowed. In addition, we tested for heterogeneity between cohorts using Cochran's Q statistic and excluded loci with evidence for effect heterogeneity ( $P < 0.05$ ). The genomic inflation factor was calculated for each cohort and for the combined analysis. We applied a threshold of  $P < 5 \times 10^{-8}$  to declare an effect as genome-wide significant. SNPs with  $P < 1 \times 10^{-4}$  in the discovery set meta-analysis were selected for replication. When multiple associated SNPs were located in the same region, we selected the best SNP per 1-Mb window. In total, 54 SNPs were selected and analysed using data from five additional GWAS sets. Two of these SNPs, which were significant after correcting for the number of SNPs in the replication set ( $P < 0.05/54 = P < 9.3 \times 10^{-4}$ ; Bonferroni correction), were genotyped in one more study population (Supplementary Fig. 1). Association analyses were again performed for each replication study separately using a logistic regression model. A meta-analysis was conducted for the replication set and for all studies combined as described above. We applied a genome-wide significance threshold of  $P < 5 \times 10^{-8}$  in the combined meta-analysis and tested for overall heterogeneity of the discovery and replication studies using the Cochran's Q statistic. Within the EDC in chromosomal region 1q21.3, we performed an association analysis adjusted for the effects of the most common mutations in the filaggrin gene (*FLG*), 2282del4 and R501X. *FLG* genotypes were available in ALSPAC, BAMSE, PIAMA and in a subset of the German samples with genome-wide data. The combined *FLG* mutation status was included as a covariate in the logistic regression analysis using an additive model.

**Genotyping of the *FLG* mutations R501X and 2282del4.** The two most frequent *FLG*-null mutations in Europeans, R501X and 2282del4, were genotyped in ALSPAC<sup>67</sup>, the Children/Barn, Allergy, Milieu, Stockholm, an Epidemiological survey Study (BAMSE)<sup>68</sup>, the Prevention and Incidence of Asthma and Mite Allergy Study (PIAMA)<sup>69</sup> and in the German set comprising the cases of the German GWAS and controls of the Population Genetics (POPGEN)/Cooperative health research in the region of Augsburg (KORA) studies<sup>14</sup> as originally described<sup>8,70</sup>.

**Subphenotype analysis in the ALSPAC birth cohort.** We analysed the association of the atopic march, eczema alone and asthma alone in the population-based birth cohort ALSPAC. For atopic march cases ( $n = 563$ ) and for controls ( $n = 2,293$ ), we used the same definition as in the present GWAS. For the eczema alone analysis, cases had to fulfil the early eczema definition and have a negative report on asthma ( $n = 494$ ). For the asthma alone analysis, cases had to fulfil the childhood asthma definition and have a negative report on eczema ( $n = 587$ ).

In addition, we performed case-only analyses for the atopic march cases versus eczema alone and versus asthma alone. Effect sizes and CIs were assessed by logistic regression using PLINK.

Applying the same phenotype definitions, we assessed the effect of infantile eczema on childhood asthma by using a chi-square test.

## References

- Dharmage, S. C. *et al.* Atopic dermatitis and the atopic march revisited. *Allergy* **69**, 17–27 (2014).
- Spergel, J. M. From atopic dermatitis to asthma: the atopic march. *Ann. Allergy Asthma Immunol.* **105**, 99–106 (2010).
- Almqvist, C. *et al.* Early predictors for developing allergic disease and asthma: examining separate steps in the 'allergic march'. *Clin. Exp. Allergy* **37**, 1296–1302 (2007).
- Ricci, G. *et al.* Long-term follow-up of atopic dermatitis: retrospective analysis of related risk factors and association with concomitant allergic diseases. *J. Am. Acad. Dermatol.* **55**, 765–771 (2006).
- Leung, D. Y. & Guttman-Yassky, E. Deciphering the complexities of atopic dermatitis: shifting paradigms in treatment approaches. *J. Allergy Clin. Immunol.* **134**, 769–779 (2014).
- Li, M. Current evidence of epidermal barrier dysfunction and thymic stromal lymphopoietin in the atopic march. *Eur. Respir. Rev.* **23**, 292–298 (2014).
- Kemeny, L. & Szabo, K. Toll-like receptors link atopic march to the hygiene hypothesis. *J. Invest. Dermatol.* **133**, 874–878 (2013).
- Palmer, C. N. *et al.* Common loss-of-function variants of the epidermal barrier protein filaggrin are a major predisposing factor for atopic dermatitis. *Nat. Genet.* **38**, 441–446 (2006).
- Marenholz, I. *et al.* Filaggrin loss-of-function mutations predispose to phenotypes involved in the atopic march. *J. Allergy Clin. Immunol.* **118**, 866–871 (2006).
- Punekar, Y. S. & Sheikh, A. Establishing the sequential progression of multiple allergic diagnoses in a UK birth cohort using the General Practice Research Database. *Clin. Exp. Allergy* **39**, 1889–1895 (2009).
- Freedman, M. L. *et al.* Assessing the impact of population stratification on genetic association studies. *Nat. Genet.* **36**, 388–393 (2004).
- Paternoster, L. *et al.* Meta-analysis of genome-wide association studies identifies three new risk loci for atopic dermatitis. *Nat. Genet.* **44**, 187–192 (2012).
- Marenholz, I. *et al.* The eczema risk variant on chromosome 11q13 (rs7927894) in the population-based ALSPAC cohort: a novel susceptibility factor for asthma and hay fever. *Hum. Mol. Genet.* **20**, 2443–2449 (2011).
- Esparza-Gordillo, J. *et al.* A common variant on chromosome 11q13 is associated with atopic dermatitis. *Nat. Genet.* **41**, 596–601 (2009).
- Moffatt, M. F. *et al.* Genetic variants regulating ORMDL3 expression contribute to the risk of childhood asthma. *Nature* **448**, 470–473 (2007).
- Biggaard, H. *et al.* Chromosome 17q21 gene variants are associated with asthma and exacerbations but not atopy in early childhood. *Am. J. Respir. Crit. Care Med.* **179**, 179–185 (2009).
- Halapi, E. *et al.* A sequence variant on 17q21 is associated with age at onset and severity of asthma. *Eur. J. Hum. Genet.* **18**, 902–908 (2010).
- Hinds, D. A. *et al.* A genome-wide association meta-analysis of self-reported allergy identifies shared and allergy-specific susceptibility loci. *Nat. Genet.* **45**, 907–911 (2013).
- Ferreira, M. A. *et al.* Genome-wide association analysis identifies 11 risk variants associated with the asthma with hay fever phenotype. *J. Allergy Clin. Immunol.* **133**, 1564–1571 (2014).
- Lappalainen, T. *et al.* Transcriptome and genome sequencing uncovers functional variation in humans. *Nature* **501**, 506–511 (2013).
- ENCODE Project Consortium. An integrated encyclopedia of DNA elements in the human genome. *Nature* **489**, 57–74 (2012).
- Kundaje, A. *et al.* Integrative analysis of 111 reference human epigenomes. *Nature* **518**, 317–330 (2015).
- Eppig, J. T., Blake, J. A., Bult, C. J., Kadin, J. A. & Richardson, J. E. The Mouse Genome Database (MGD): facilitating mouse as a model for human biology and disease. *Nucleic Acids Res.* **43**, D726–D736 (2015).
- Forrest, A. R. *et al.* A promoter-level mammalian expression atlas. *Nature* **507**, 462–470 (2014).
- Johnson, A. D. *et al.* SNAP: a web-based tool for identification and annotation of proxy SNPs using HapMap. *Bioinformatics* **24**, 2938–2939 (2008).
- Sunryd, J. C. *et al.* TMTC1 and TMTC2 are novel endoplasmic reticulum tetratricopeptide repeat-containing adapter proteins involved in calcium homeostasis. *J. Biol. Chem.* **289**, 16085–16099 (2014).
- Welter, D. *et al.* The NHGRI GWAS Catalog, a curated resource of SNP-trait associations. *Nucleic Acids Res.* **42**, D1001–D1006 (2014).
- Medina, M. T. *et al.* Novel mutations in Myoclonin1/EFHC1 in sporadic and familial juvenile myoclonic epilepsy. *Neurology* **70**, 2137–2144 (2008).
- Annesi, F. *et al.* Mutational analysis of EFHC1 gene in Italian families with juvenile myoclonic epilepsy. *Epilepsia* **48**, 1686–1690 (2007).

30. Ma, S. *et al.* Mutations in the GABRA1 and EFHC1 genes are rare in familial juvenile myoclonic epilepsy. *Epilepsy Res.* **71**, 129–134 (2006).
31. Stogmann, E. *et al.* Idiopathic generalized epilepsy phenotypes associated with different EFHC1 mutations. *Neurology* **67**, 2029–2031 (2006).
32. Suzuki, T. *et al.* Mutations in EFHC1 cause juvenile myoclonic epilepsy. *Nat. Genet.* **36**, 842–849 (2004).
33. Suzuki, T. *et al.* Efhc1 deficiency causes spontaneous myoclonus and increased seizure susceptibility. *Hum. Mol. Genet.* **18**, 1099–1109 (2009).
34. Ikeda, T. *et al.* The mouse ortholog of EFHC1 implicated in juvenile myoclonic epilepsy is an axonemal protein widely conserved among organisms with motile cilia and flagella. *FEBS Lett.* **579**, 819–822 (2005).
35. Thomas, B. *et al.* Ciliary dysfunction and ultrastructural abnormalities are features of severe asthma. *J. Allergy Clin. Immunol.* **126**, 722–729 (2010).
36. Silverberg, J. I., Joks, R. & Durkin, H. G. Allergic disease is associated with epilepsy in childhood: a US population-based study. *Allergy* **69**, 95–103 (2014).
37. Drgonova, J. *et al.* Involvement of the neutral amino acid transporter SLC6A15 and leucine in obesity-related phenotypes. *PLoS ONE* **8**, e68245 (2013).
38. Schuhmacher, A. *et al.* A variant of the neuronal amino acid transporter SLC6A15 is associated with ACTH and cortisol responses and cognitive performance in unipolar depression. *Int. J. Neuropsychopharmacol.* **16**, 83–90 (2013).
39. Kohli, M. A. *et al.* The neuronal transporter gene SLC6A15 confers risk to major depression. *Neuron* **70**, 252–265 (2011).
40. Cuboni, S. *et al.* Loratadine and analogues: discovery and preliminary structure-activity relationship of inhibitors of the amino acid transporter B(0)AT2. *J. Med. Chem.* **57**, 9473–9479 (2014).
41. Pasparakis, M., Haase, I. & Nestle, F. O. Mechanisms regulating skin immunity and inflammation. *Nat. Rev. Immunol.* **14**, 289–301 (2014).
42. Kawasaki, H. *et al.* Altered stratum corneum barrier and enhanced percutaneous immune responses in flaggrin-null mice. *J. Allergy Clin. Immunol.* **129**, 1538–1546 (2012).
43. Spengel, J. M. *et al.* Epicutaneous sensitization with protein antigen induces localized allergic dermatitis and hyperresponsiveness to methacholine after single exposure to aerosolized antigen in mice. *J. Clin. Invest.* **101**, 1614–1622 (1998).
44. Horimukai, K. *et al.* Application of moisturizer to neonates prevents development of atopic dermatitis. *J. Allergy Clin. Immunol.* **134**, 824–830 (2014).
45. Simpson, E. L. *et al.* Emollient enhancement of the skin barrier from birth offers effective atopic dermatitis prevention. *J. Allergy Clin. Immunol.* **134**, 818–823 (2014).
46. Ballardini, N. *et al.* Infantile eczema: prognosis and risk of asthma and rhinitis in preadolescence. *J. Allergy Clin. Immunol.* **133**, 594–596 (2014).
47. Saunes, M. *et al.* Early eczema and the risk of childhood asthma: a prospective, population-based study. *BMC Pediatr.* **12**, 168 (2012).
48. von Kobyletzki, L. B. *et al.* Eczema in early childhood is strongly associated with the development of asthma and rhinitis in a prospective cohort. *BMC Dermatol.* **12**, 11 (2012).
49. Martin, P. E. *et al.* Childhood eczema and rhinitis predict atopic but not nonatopic adult asthma: a prospective cohort study over 4 decades. *J. Allergy Clin. Immunol.* **127**, 1473–1479 (2011).
50. Belgrave, D. C. *et al.* Developmental profiles of eczema, wheeze, and rhinitis: two population-based birth cohort studies. *PLoS Med.* **11**, e1001748 (2014).
51. Noti, M. *et al.* Exposure to food allergens through inflamed skin promotes intestinal food allergy through the thymic stromal lymphopoietin-basophil axis. *J. Allergy Clin. Immunol.* **133**, 1390–1399 (2014).
52. Bihouee, T. *et al.* Food allergy enhances allergic asthma in mice. *Respir. Res.* **15**, 142 (2014).
53. Longo, G., Berti, I., Burks, A. W., Krauss, B. & Barbi, E. IgE-mediated food allergy in children. *Lancet* **382**, 1656–1664 (2013).
54. Chafen, J. J. *et al.* Diagnosing and managing common food allergies: a systematic review. *JAMA* **303**, 1848–1856 (2010).
55. Keil, T. *et al.* The multinational birth cohort of EuroPrevall: background, aims and methods. *Allergy* **65**, 482–490 (2010).
56. Rona, R. J. *et al.* The prevalence of food allergy: a meta-analysis. *J. Allergy Clin. Immunol.* **120**, 638–646 (2007).
57. Ramasamy, A. *et al.* A genome-wide meta-analysis of genetic variants associated with allergic rhinitis and grass sensitization and their interaction with birth order. *J. Allergy Clin. Immunol.* **128**, 996–1005 (2011).
58. Spengel, J. M. Epidemiology of atopic dermatitis and atopic march in children. *Immunol. Allergy Clin. North Am.* **30**, 269–280 (2010).
59. Kapoor, R. *et al.* The prevalence of atopic triad in children with physician-confirmed atopic dermatitis. *J. Am. Acad. Dermatol.* **58**, 68–73 (2008).
60. van der Hulst, A. E., Klip, H. & Brand, P. L. Risk of developing asthma in young children with atopic eczema: a systematic review. *J. Allergy Clin. Immunol.* **120**, 565–569 (2007).
61. Moffatt, M. F. *et al.* A large-scale, consortium-based genomewide association study of asthma. *N. Engl. J. Med.* **363**, 1211–1221 (2010).
62. Patterson, N., Price, A. L. & Reich, D. Population structure and eigenanalysis. *PLoS Genet.* **2**, e190 (2006).
63. Li, Y., Willer, C. J., Ding, J., Scheet, P. & Abecasis, G. R. MaCH: using sequence and genotype data to estimate haplotypes and unobserved genotypes. *Genet. Epidemiol.* **34**, 816–834 (2010).
64. Howie, B. N., Donnelly, P. & Marchini, J. A flexible and accurate genotype imputation method for the next generation of genome-wide association studies. *PLoS Genet.* **5**, e1000529 (2009).
65. Williams, R. L. A note on robust variance estimation for cluster-correlated data. *Biometrics* **56**, 645–646 (2000).
66. Willer, C. J., Li, Y. & Abecasis, G. R. METAL: fast and efficient meta-analysis of genomewide association scans. *Bioinformatics* **26**, 2190–2191 (2010).
67. Henderson, J. *et al.* The burden of disease associated with flaggrin mutations: a population-based, longitudinal birth cohort study. *J. Allergy Clin. Immunol.* **121**, 872–877 (2008).
68. Ballardini, N. *et al.* Eczema severity in preadolescent children and its relation to sex, flaggrin mutations, asthma, rhinitis, aggravating factors and topical treatment: a report from the BAMSE birth cohort. *Br. J. Dermatol.* **168**, 588–594 (2013).
69. Schuttelaar, M. L. *et al.* Flaggrin mutations in the onset of eczema, sensitization, asthma, hay fever and the interaction with cat exposure. *Allergy* **64**, 1758–1765 (2009).
70. Sandilands, A. *et al.* Comprehensive analysis of the gene encoding flaggrin uncovers prevalent and rare mutations in ichthyosis vulgaris and atopic eczema. *Nat. Genet.* **39**, 650–654 (2007).

## Acknowledgements

Acknowledgements for each of the studies are provided in the Supplementary Information File.

## Author contributions

I.M., J.E.-G. and Y.A.L. coordinated the study. I.M., J.E.-G., F.R., A.B., D.P.S., B.D.S., H.B., P.M.-J., M.-H.D., A.S., M.Ke., M.E., M.B.F., S.B., M.C.M., V.S., M.H., M.A.R.F., J.L., P.S., S.M. and W.Q.A. contributed to data analysis. I.M., J.E.-G., Y.A.L., D.P.S., G.H., M.-H.D., F.D., E.B., E.M., G.P., G.H.K., D.S.P., M.Ke., J.C.d.J., J.G., M.E., M.B.F., V.P.P., C.L., T.J.H., C.M., M.Ka., S.W., H.H., S.L., T.K., M.M.N., P.D.S., P.G.H., C.O.S. and N.H. participated in study design. Y.A.L., A.J.H., E.M., G.H.K., D.S.P., M.Ke., H.H., E.T. and N.H. were responsible for supervision of experiments and analyses. D.P.S., A.J.H., E.M., C.S., J.C.d.J., L.M.O., V.P.P., E.Y.B., C.L., T.J.H., C.M., D.L.D., G.B.M., C.F.R., B.M., P.J.T., N.G.M., A.J., M.A.R.F., P.S., J.L., S.L., T.K., M.M.N., C.E.P. and W.Q.A. were involved in data collection. Y.A.L., D.P.S., A.A., G.H., F.D., E.B., M.-H.D., E.M., G.P., G.H.K., D.S.P., M.Ke., J.G., C.B.-F., E.H., L.M.O., C.L., D.L.D., G.B.M., C.F.R., B.M., P.J.T., N.G.M., A.J., M.A.R.F., H.H., S.W., R.F.-H., A.F., W.L., C.G., M.Ka., A.H., E.Ri., S.L., T.K., S.C., M.M.N. and C.O.S. contributed data/samples. Y.A.L., A.J.H., A.A., G.H.K., D.S.P., C.B.-F., E.H., L.M.O., C.M., E.T., R.F.-H., S.L., C.E.P., W.Q.A., P.D.S. and P.G.H. were involved in phenotyping. W.M., C.S., E.Y.B., G.W.M., E.T., E.Ro. and A.M. were involved in laboratory work. I.M., J.E.-G. and Y.A.L. contributed to manuscript writing. All authors reviewed, revised and approved the final version of the manuscript.

## Additional information

**Supplementary Information** accompanies this paper at <http://www.nature.com/naturecommunications>

**Competing financial interests:** The authors declare no competing financial interests.

**Reprints and permission** information is available online at <http://npg.nature.com/reprintsandpermissions/>

**How to cite this article:** Marenholz, I. *et al.* Meta-analysis identifies seven susceptibility loci involved in the atopic march. *Nat. Commun.* **6**:8804 doi: 10.1038/ncomms9804 (2015).



This work is licensed under a Creative Commons Attribution 4.0 International License. The images or other third party material in this article are included in the article's Creative Commons license, unless indicated otherwise in the credit line; if the material is not included under the Creative Commons license, users will need to obtain permission from the license holder to reproduce the material. To view a copy of this license, visit <http://creativecommons.org/licenses/by/4.0/>



Ingo Marenholz<sup>1,2</sup>, Jorge Esparza-Gordillo<sup>1,2</sup>, Franz Rüschemann<sup>1</sup>, Anja Bauerfeind<sup>1</sup>, David P. Strachan<sup>3</sup>, Ben D. Spycher<sup>4</sup>, Hansjörg Baurecht<sup>5</sup>, Patricia Margaritte-Jeannin<sup>6,7</sup>, Annika Sääf<sup>8</sup>, Marjan Kerkhof<sup>9</sup>, Markus Ege<sup>10</sup>, Svetlana Baltic<sup>11</sup>, Melanie C. Matheson<sup>12</sup>, Jin Li<sup>13</sup>, Sven Michel<sup>14</sup>, Wei Q. Ang<sup>15</sup>, Wendy McArdle<sup>16</sup>, Andreas Arnold<sup>17</sup>, Georg Homuth<sup>18</sup>, Florence Demenais<sup>6,7</sup>, Emmanuelle Bouzigon<sup>6,7</sup>, Cilla Söderhäll<sup>19</sup>, Göran Pershagen<sup>8</sup>, Johan C. de Jongste<sup>20</sup>, Dirkje S. Postma<sup>21</sup>, Charlotte Braun-Fahrlander<sup>22</sup>, Elisabeth Horak<sup>23</sup>, Ludmila M. Ogorodova<sup>24</sup>, Valery P. Puzyrev<sup>24,25</sup>, Elena Yu Bragina<sup>25</sup>, Thomas J. Hudson<sup>26</sup>, Charles Morin<sup>27</sup>, David L. Duffy<sup>28</sup>, Guy B. Marks<sup>29</sup>, Colin F. Robertson<sup>30</sup>, Grant W. Montgomery<sup>28</sup>, Bill Musk<sup>31</sup>, Philip J. Thompson<sup>11</sup>, Nicholas G. Martin<sup>28</sup>, Alan James<sup>31</sup>, Patrick Sleiman<sup>13,32</sup>, Elina Toskala<sup>33</sup>, Elke Rodriguez<sup>5</sup>, Regina Fölster-Holst<sup>5</sup>, Andre Franke<sup>34</sup>, Wolfgang Lieb<sup>35</sup>, Christian Gieger<sup>36</sup>, Andrea Heinzmann<sup>37</sup>, Ernst Rietschel<sup>38</sup>, Thomas Keil<sup>39,40</sup>, Sven Cichon<sup>41,42,43,44</sup>, Markus M. Nöthen<sup>41,42</sup>, Craig E. Pennell<sup>15</sup>, Peter D. Sly<sup>45</sup>, Carsten O. Schmidt<sup>46</sup>, Anja Matanovic<sup>1,2</sup>, Valentin Schneider<sup>1</sup>, Matthias Heinig<sup>1,47</sup>, Norbert Hübner<sup>1</sup>, Patrick G. Holt<sup>45,48</sup>, Susanne Lau<sup>49</sup>, Michael Kabesch<sup>14</sup>, Stefan Weidinger<sup>5</sup>, Hakon Hakonarson<sup>13,32</sup>, Manuel A.R. Ferreira<sup>28</sup>, Catherine Laprise<sup>50</sup>, Maxim B. Freidin<sup>25</sup>, Jon Genuneit<sup>51</sup>, Gerard H. Koppelman<sup>52</sup>, Erik Melén<sup>8,53</sup>, Marie- Hélène Dizier<sup>6,7</sup>, A. John Henderson<sup>16</sup> & Young Ae Lee<sup>1,2</sup>

<sup>1</sup>Max-Delbrück-Center (MDC) for Molecular Medicine, 13092 Berlin, Germany. <sup>2</sup>Clinic for Pediatric Allergy, Experimental and Clinical Research Center, Charité University Medical Center, 13125 Berlin, Germany. <sup>3</sup>Population Health Research Institute, St George's, University of London, London SW17 0RE, UK. <sup>4</sup>Institute of Social and Preventive Medicine, University of Bern, 3012 Bern, Switzerland. <sup>5</sup>Department of Dermatology, Allergology, and Venerology, University Hospital Schleswig-Holstein, Campus Kiel, 24105 Kiel, Germany. <sup>6</sup>Inserm, UMR-946, F-75010 Paris, France. <sup>7</sup>Université Paris Diderot, Sorbonne Paris Cité, Institut Universitaire d'Hématologie, F-75007 Paris, France. <sup>8</sup>Institute of Environmental Medicine, Karolinska Institutet, 171 77 Stockholm, Sweden. <sup>9</sup>University of Groningen, University Medical Center Groningen, GRIAC Research Institute, 9700 RB Groningen, The Netherlands. <sup>10</sup>Dr von Hauner Children's Hospital, Ludwig Maximilians University Munich, Member of the German Center for Lung Research (DZL), 80337 Munich, Germany. <sup>11</sup>Lung Institute of Western Australia, University of Western Australia, Perth, Western Australia 6000, Australia. <sup>12</sup>Centre for Molecular, Environmental, Genetic and Analytic Epidemiology, University of Melbourne, Carlton, Victoria 3053, Australia. <sup>13</sup>Center for Applied Genomics, The Children's Hospital of Philadelphia, Philadelphia, Pennsylvania 19104, USA. <sup>14</sup>Department of Pediatric Pneumology and Allergy, University Children's Hospital Regensburg (KUNO), 93049 Regensburg, Germany. <sup>15</sup>School of Women and Infant's Health, University of Western Australia, Crawley, Western Australia 6009, Australia. <sup>16</sup>School of Social and Community Medicine, University of Bristol, Bristol BS8 2PS, UK. <sup>17</sup>Clinic and Polyclinic of Dermatology, University Medicine Greifswald, 17475 Greifswald, Germany. <sup>18</sup>Department of Functional Genomics, Interfaculty Institute for Genetics and Functional Genomics, University Medicine and Ernst-Moritz-Arndt-University Greifswald, 17487 Greifswald, Germany. <sup>19</sup>Department of Biosciences and Nutrition, and Center for Innovative Medicine (CIMED), Karolinska Institutet, 141 83 Huddinge, Sweden. <sup>20</sup>Department of Pediatrics, Pediatric Chest Center, Erasmus University Medical Center, 3015 GD Rotterdam, The Netherlands. <sup>21</sup>Department of Pulmonology and GRIAC Research Institute, University of Groningen, University Medical Center Groningen, 9700 RB Groningen, The Netherlands. <sup>22</sup>Swiss Tropical and Public Health Institute and the University of Basel, 4002 Basel, Switzerland. <sup>23</sup>Division of Pediatric Cardiology and Pulmonology, Department of Pediatrics, Innsbruck Medical University, 6020 Innsbruck, Austria. <sup>24</sup>Siberian State Medical University, Tomsk 634050, Russia. <sup>25</sup>Research Institute of Medical Genetics, Tomsk 634050, Russia. <sup>26</sup>Ontario Institute for Cancer Research, Toronto, Ontario, Canada M5G 1L7. <sup>27</sup>Centre de santé et de services sociaux de Chicoutimi, Saguenay, Quebec, Canada G7H 2B1. <sup>28</sup>QIMR Berghofer Medical Research Institute, Brisbane, Queensland 4006, Australia. <sup>29</sup>Woolcock Institute of Medical Research, University of Sydney, Glebe, New South Wales 2037, Australia. <sup>30</sup>Department of Respiratory Medicine, Murdoch Children's Research Institute, Parkville, Victoria 3052, Australia. <sup>31</sup>Busselton Population Medical Research Foundation, Sir Charles Gairdner Hospital, Nedlands, Western Australia 6009, Australia. <sup>32</sup>Department of Pediatrics, Perelman School of Medicine, University of Pennsylvania, Philadelphia, Pennsylvania 19104, USA. <sup>33</sup>Department of Otolaryngology—Head and Neck Surgery, Temple University, School of Medicine, Philadelphia, Pennsylvania 19140, USA. <sup>34</sup>Institute of Clinical Molecular Biology, Christian-Albrechts-University of Kiel, 24105 Kiel, Germany. <sup>35</sup>Institute of Epidemiology, Christian-Albrechts-University of Kiel, 24105 Kiel, Germany. <sup>36</sup>Research Unit of Molecular Epidemiology and Institute of Epidemiology II, Helmholtz Zentrum München, German Research Center for Environmental Health, 85764 Neuherberg, Germany. <sup>37</sup>University Children's Hospital, Albert Ludwigs University, 79106 Freiburg, Germany. <sup>38</sup>University Children's Hospital, University of Cologne, 50937 Cologne, Germany. <sup>39</sup>Institute of Social Medicine, Epidemiology and Health Economics, Charité University Medical Center, 10117 Berlin, Germany. <sup>40</sup>Institute for Clinical Epidemiology and Biometry, University of Würzburg, 97080 Würzburg, Germany. <sup>41</sup>Institute of Human Genetics, University of Bonn, 53127 Bonn, Germany. <sup>42</sup>Department of Genomics, Life & Brain Center, University of Bonn, 53127 Bonn, Germany. <sup>43</sup>Division of Medical Genetics, University Hospital Basel and Department of Biomedicine, University of Basel, 4031 Basel, Switzerland. <sup>44</sup>Institute of Neuroscience and Medicine (INM-1), Structural and Functional Organisation of the Brain, Genomic Imaging, Research Centre Jülich, 52425 Jülich, Germany. <sup>45</sup>Queensland Children's Medical Research Institute, University of Queensland, Brisbane, Queensland 4029, Australia. <sup>46</sup>Institute for Community Medicine, Study of Health in Pomerania/KEF, University Medicine Greifswald, 17475 Greifswald, Germany. <sup>47</sup>Max Planck Institute for Molecular Genetics, 14195 Berlin, Germany. <sup>48</sup>Telethon Kids Institute, University of Western Australia, West Perth, Western Australia 6872, Australia. <sup>49</sup>Department of Pediatric Pneumology and Immunology, Charité University Medical Center, 13353 Berlin, Germany. <sup>50</sup>Université du Québec à Chicoutimi, Saguenay, Quebec, Canada G7H 2B1. <sup>51</sup>Institute of Epidemiology and Medical Biometry, Ulm University, 89081 Ulm, Germany. <sup>52</sup>Department of Pediatric Pulmonology and Pediatric Allergology, University of Groningen, University Medical Center Groningen, Beatrix Children's Hospital and GRIAC Research Institute, 9713 GZ Groningen, The Netherlands. <sup>53</sup>Sachs' Children's Hospital, 118 83 Stockholm, Sweden.