

SCIENTIFIC REPORTS



OPEN

Potent *in vitro* antiviral activity of *Cistus incanus* extract against HIV and Filoviruses targets viral envelope proteins

Stephanie Rebensburg^{1,*}, Markus Helfer^{1,*}, Martha Schneider¹, Herwig Koppensteiner¹, Josef Eberle³, Michael Schindler^{1,2}, Lutz Gürtler³ & Ruth Brack-Werner^{1,4}

Novel therapeutic options are urgently needed to improve global treatment of virus infections. Herbal products with confirmed clinical safety features are attractive starting material for the identification of new antiviral activities. Here we demonstrate that *Cistus incanus* (Ci) herbal products inhibit human immunodeficiency virus (HIV) infections *in vitro*. Ci extract inhibited clinical HIV-1 and HIV-2 isolates, and, importantly, a virus isolate with multiple drug resistances, confirming broad anti-HIV activity. Antiviral activity was highly selective for virus particles, preventing primary attachment of the virus to the cell surface and viral envelope proteins from binding to heparin. Bioassay-guided fractionation indicated that Ci extract contains numerous antiviral compounds and therefore has favorably low propensity to induce virus resistance. Indeed, no resistant viruses emerged during 24 weeks of continuous propagation of the virus in the presence of Ci extracts. Finally, Ci extracts also inhibited infection by virus particles pseudotyped with Ebola and Marburg virus envelope proteins, indicating that antiviral activity of Ci extract extends to emerging viral pathogens. These results demonstrate that Ci extracts show potent and broad *in vitro* antiviral activity against viruses that cause life-threatening diseases in humans and are promising sources of agents that target virus particles.

Virus infections pose serious threats to human health on a global scale. The human immunodeficiency virus (HIV) causes chronic, life-long infection that leads to AIDS without antiretroviral treatment. Over 35 million individuals are living with HIV/AIDS and the pandemic has remained among the 10 leading global causes of death for over a decade, especially in low-income countries¹. Emerging viruses like the Ebola virus (EBOV) can cause an acute disease with symptoms appearing 2–21 days after infection and a high risk of death (average mortality rate ~50%) (For summary of current knowledge regarding Ebola virus disease see²). EBOV can cause sudden outbreaks, like the one that flared up in May 2014 in West Africa (Guinea, Liberia and Sierra Leone). Next to the death of more than 10 000 individuals, this outbreak placed an additional heavy burden on countries already weakened by lack of resources and long periods of conflict and instability and lead to breakdown of local health care systems.

There is a strong need for the development of novel antiviral agents for treatment of life-threatening viral infections. Despite the availability of a number of approved drugs for treatment of HIV/AIDS ($\geq 25^3$), current anti-HIV therapies would still benefit from various improvements. Limitations include the high risk of emergence of resistant viruses, poor penetration of virus sanctuaries like the central nervous system, adverse effects, especially in the context of long-term therapy, and incomplete access to affordable therapies in resource-limited areas^{4–7}. Furthermore, the majority of these drugs block post-entry steps of the virus replication cycle and attack only a few viral targets, such as the viral reverse transcriptase, protease or integrase³.

In contrast to HIV/AIDS, no approved drugs are currently available to combat EBOV infections. The lack of targeted antiviral therapies is one of the most frightening aspects of managing EBOV outbreaks.

¹Helmholtz Zentrum München - Deutsches Forschungszentrum für Gesundheit und Umwelt, Institute of Virology, Oberschleißheim. ²University Hospital of Tübingen, Department of Medical Virology and Epidemiology of Viral Diseases, Tübingen. ³Ludwig Maximilian's University, Max von Pettenkofer Institute, Munich. ⁴German Center for Infection Research, partner site Munich, Germany. *These authors contributed equally to this work. Correspondence and requests for materials should be addressed to R.B.-W. (email: brack@helmholtz-muenchen.de)

Plant-derived natural products play a significant role for medical treatments^{8,9}. Herbal extracts represent the primary form of health care for a major proportion of the world's population¹⁰ and are an important source of single-molecule drug leads. A prominent example is the anti-malaria activity of *Artemisia annua*¹¹ discovered by YouYou Tu, recipient of the 2015 Nobel Prize for Physiology and Medicine¹².

Antiviral activities have been reported for numerous medicinal plants^{9,13}. However, their implementation as herbal antiviral medicines requires in-depth research of their efficacy, safety, composition and mechanisms-of-action¹⁴. Data for clinical safety and for biological activities are available for a few herbal extracts, some of which are sold as over-the-counter medicines in Europe. We seek to investigate the antiviral activities of these clinically evaluated herbal medicines against major human viral pathogens like HIV-1 as an initial step for the identification of new sources of antiviral agents. This approach is supported by our recent demonstration of anti-HIV-1 activity of extracts of *Pelargonium sidoides*¹⁵, licensed in Germany as the herbal medicine Umckaloabo[®].

In this study, we investigated antiviral activities of *Cistus incanus* (Pink Rockrose) against HIV and Filoviruses. *Cistus incanus* (Ci) is native to Mediterranean regions of Southern Europe and North Africa and belongs to a different taxonomic order (Malvales) than *Pelargonium sidoides* (Geraniales). Ci extracts have been shown to have anti-inflammatory, anti-oxidant, antimycotic and antibacterial activities^{16–19}. Ci is rich in polyphenols^{18–23}, a chemical class of compounds that includes many representatives with antimicrobial/antiviral activities^{24,25}. Furthermore, Ci extracts were demonstrated to inhibit infection by influenza A virus^{21,26}. Different Ci preparations are commercially available, including a CYSTUS052[®] decoction, throat lozenges and a herbal tea. Clinical studies performed with patients with upper respiratory tract infections revealed decreased symptoms and less adverse effects in treated patients compared to control patients, indicating clinical efficacy and a favorable safety profile of CYSTUS052[®]^{27,28}.

We demonstrate that Ci extracts show broad inhibitory activity against different HIV isolates, including a clinical virus isolate with multiple resistances against conventional drugs. Mode-of-action studies demonstrate that Ci extracts target viral envelope proteins, preventing the primary attachment of the virus to host cells. Antiviral activity of Ci extracts was also directed against the Ebola virus envelope protein. Extract deconvolution studies revealed that Ci extracts contain numerous active ingredients against HIV and Ebola virus. Our results demonstrate that Ci extract has potent antiviral activity against HIV and Ebola virus and indicate that Ci extract contains multiple compounds that prevent these viruses from entering host cells for replication.

Results

Antiviral activity of *Cistus incanus* extracts against a broad range of HIV isolates. Different aqueous extracts of *Cistus incanus* (Ci) were evaluated for anti-HIV activity, using a highly sensitive HIV reporter cell line (LC5-RIC) and technology established for identification of HIV inhibitors (EASY-HIT²⁹). Initial testing was performed with a commercial Ci preparation (CYSTUS052[®]), an extract brewed from Ci tea and an extract prepared from fresh, self-grown Ci plants (n = 3). All three Ci extracts inhibited infection of LC5-RIC cells by the HIV-1 laboratory isolate HIV-1_{LAI} with similar efficacies (Supplementary Fig. S1). Viability of Ci treated cells (measured by MTT assay) was ≥80% of untreated cells for all extracts. For further analysis of anti-HIV activity, we used CYSTUS052[®].

We then investigated antiviral activity of the Ci extract against a broad range of clinical HIV isolates. As shown in Fig. 1, Ci extract inhibited infection by both HIV types 1 and 2. Inhibition of infection by clinical isolates from two different groups [Major (HIV-1M_{MVP899-87}) and Outlier (HIV-1O_{MVP5180-91})] was shown with LC5-RIC reporter cells and with primary human peripheral blood mononuclear cells (PBMC). Importantly, Ci extract also inhibited an HIV-1 M group/B clade isolate (HIV-1_{V13-03413B}) with multiple drug resistance mutations. This isolate was derived from a patient with virologic treatment failure. Analysis of the protease and reverse transcriptase sequences of HIV-1_{V13-03413B} with the HIV-GRADE tool³⁰ predicted high-level resistance of HIV-1_{V13-03413B} against 3 of 4 NNRTIs (Non-nucleoside reverse transcriptase inhibitors), 8 of 10 NRTIs (nucleoside reverse transcriptase inhibitors) and 13 of 14 protease inhibitors, and intermediate resistance against the remaining drugs in these classes.

To elucidate the importance of polyphenols for anti-HIV activity of Ci extract, we produced a polyphenol-enriched fraction (CiPP) from the Ci extract by adsorption of polyphenols to polyvinylpyrrolidone (PVPP). CiPP showed dose-dependent antiviral activity against the entire panel of HIV isolates tested (Fig. 2A). The antiviral activity of the CiPP fraction ranged from ~0.7 to 2.0 μg/ml and was ≥5-fold stronger than that of the whole Ci extract (compare Figs 1A and 2A). In contrast, the polyphenol-depleted fraction showed no antiviral activity when tested with HIV-1_{LAI} at the same concentrations, indicating that polyphenols account for the antiviral activity of Ci extract (Fig. 2B).

Testing of the effect of Ci treatment on the viability of PBMC by MTT assay revealed CC₅₀ values ≥250 μg/ml for the whole extract (Supplementary Fig. S2). CiPP showed even lower cytotoxicity (CC₅₀ >1200 μg/ml) than the whole extract. Thus enrichment of polyphenols eliminates cytotoxic components of the extract and increases antiviral activity.

Together these results demonstrate potent antiviral activity of Ci extract against a broad range of HIV isolates and show that polyphenols are crucial for anti-HIV activity.

Mechanism-of-action: Ci extract prevents HIV from invading host cells. Antiviral testing of Ci extract in the EASY-HIT system revealed inhibition in the first step of the assay, which is characteristic of antiviral agents that affect the early phase of the HIV replication cycle²⁹. We therefore performed time-of-addition (TOA) assays. The TOA assay measures the impact of the time point of addition of the antiviral compound on its capacity to inhibit virus infection^{29,31}. As reference compounds we used the HIV-1 fusion inhibitor T20 and the reverse transcription inhibitor Efavirenz. The resulting Ci profile shows loss-of-inhibition at time points even earlier

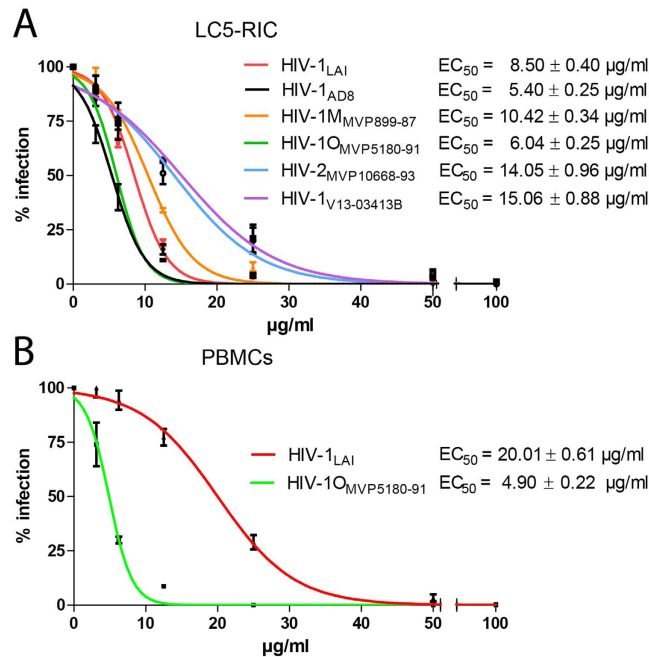


Figure 1. *Cistus incanus* extract inhibits infectivity of a broad range of human immunodeficiency viruses (HIV). (A) Antiviral activity of *Cistus incanus* (Ci) extract inhibits HIV type 1 and HIV type 2 isolates. Inhibition of infection was evaluated with human HIV reporter cells (LC5-RIC or LC5-RIC-R5 for HIV-1_{AD8(R5)}) using HIV-1 isolates with different coreceptor tropisms (HIV-1_{LA1}: X4-tropic; HIV-1_{AD8(R5)}: R5-tropic), HIV-1 clinical isolates belonging to the M (Major) (HIV-1_{M_{MVP899-87}}) or the O (Outlier) group (HIV-1_{O_{MVP5180-91}}), a clinical isolate of HIV type 2 (HIV-2_{MVP10668-93}) and a clinical HIV-1 isolate with multiple drug resistances (HIV-1_{V13-03413B}). (B) *Cistus incanus* (Ci) extract inhibits HIV infection of primary human target cells. Interleukin-2 stimulated peripheral blood mononuclear cells (PBMC) were exposed to HIV-1_{LA1} or HIV-1_{O_{MVP5180-91}} virus in the presence of different concentrations of Ci extract. Levels of infectious virus produced by the PBMC were determined by analysing culture supernatants of the PBMC with LC5-RIC cells. Experiments were performed with PBMCs from 3 donors. Dose-response curves are shown for 3 independent infection assays, each performed with 6 concentrations of Ci extract between 100 µg/ml and 3.12 µg/ml. Symbols signify mean values and error bars the standard deviation of the mean. EC₅₀ signifies the calculated half maximal effective concentration.

than observed for the fusion inhibitor T20 (Fig. 3A), demonstrating that Ci inhibits a very early step in the HIV-1 replication cycle. This is further supported by failure to detect cell-associated genomic viral RNA in HIV-exposed cells co-treated with Ci extract and the reverse transcriptase inhibitor Efavirenz (Fig. 3B).

We then assessed the effect of Ci extract on the attachment of virus particles to host cells, using GFP-labelled HIV-1 particles (HIV-1 NL4-3 Gag-iGFP³²) and spinning disc confocal microscopy, as described previously¹⁵. Virus attachment was assayed in the presence of T20 to maximize virus-cell association. As expected, numerous green fluorescent, cell-associated dots were visible in the absence of Ci, confirming attachment of virus particles to host cells (Fig. 3C,D Attachment control). In contrast, treatment with Ci extract strongly reduced the number of GFP signals per cell (Ci extract and CiPP), indicating that Ci extract inhibits the association of virus particles with host cells.

Together these results demonstrate that Ci extract blocks attachment of viral particles to cells and thus inhibit viral entry into host cells.

Antiviral activity of Ci extract targets HIV envelope proteins. To verify whether antiviral Ci components target virus particles or host cells, we preincubated either cells or virus particles with Ci extract prior to infection. Preincubation of LC5-RIC cells with Ci extract had no effect on virus infection (Fig. 4A). In contrast, preincubation of virus particles with Ci strongly decreased infection, yielding infection levels even lower than those obtained by simultaneous addition of Ci extract and virus to cells (i.e. standard assay conditions). These results indicate that Ci extract directly affects virus particles.

To investigate whether Ci extract targets the HIV-1 envelope glycoproteins, we analysed whether treatment of virus particles with Ci extract affects capture of HIV-1 particles by heparin. HIV-1 binding to heparin is mediated by the viral envelope protein gp120 (reviewed in³³). For heparin affinity chromatography, HIV-1 stocks were incubated with heparin-beads and eluted by washing with high salt buffer. Virus capture was determined by quantification of HIV-1 antigen (Gag-p24) associated with heparin beads and in the eluate. Virus antigen was not detected in the bead fraction or in the eluate of virus capture assays performed with Ci treated HIV-1, whereas virus antigen was readily detected for capture assays performed with untreated virus samples (Fig. 4B). These results indicate that Ci treatment blocks gp120-mediated binding to heparin.

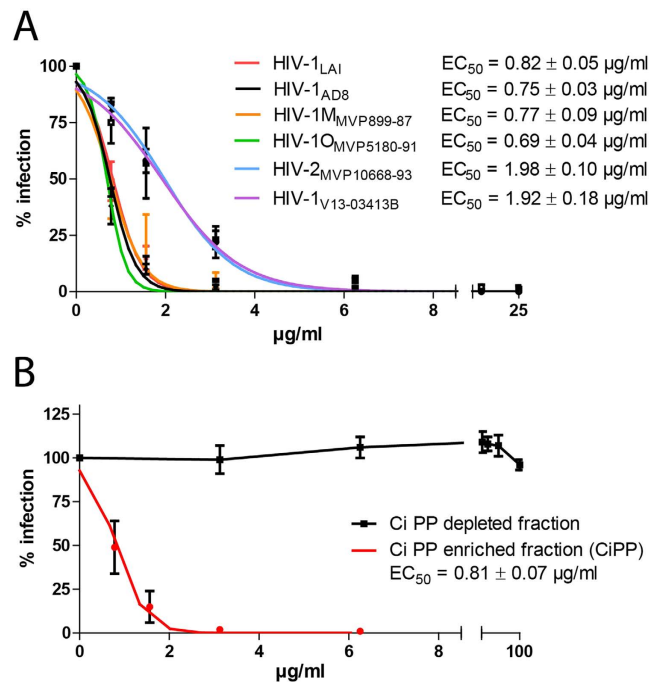


Figure 2. Polyphenols are crucial for anti-HIV activity of the *Cistus incanus* extract. A polyphenol-enriched fraction (CiPP-enriched fraction) was generated by exposing whole *Cistus incanus* (Ci) extract to polyvinylpyrrolidone (PVPP), followed by separation of the PVPP pellet from the aqueous supernatant by centrifugation and elution of the adsorbed polyphenols (PP) from the PVPP pellet. (For further details see Materials and Methods). **(A)** Polyphenol-enriched fraction efficiently inhibits infection by HIV type 1 and HIV type 2 isolates. HIV-inhibitory activity of the polyphenol-enriched fraction was tested with the same panel of HIV isolates with LC5-RIC cells and under the same conditions used for testing of whole Ci extract (see Fig. 1). **(B)** Anti-HIV activity is selectively retained by the polyphenol-enriched fraction. Anti-HIV activities of the polyphenol-enriched and the polyphenol-depleted fraction were compared using HIV-1_{LAI} and LC5-RIC cells. The polyphenol-depleted fraction (=CiPP-depleted fraction) represents the aqueous supernatant of the PVPP pellet after centrifugation. Dose-response curves are shown for 3 independent infection assays, each performed with 6 concentrations of Ci extract between 25 $\mu\text{g/ml}$ and 0.78 $\mu\text{g/ml}$. Symbols signify mean values and error bars the standard deviation of the mean. EC_{50} signifies the calculated half maximal effective concentration.

Next we investigated whether Ci components also target cell-derived proteins in the viral envelope. The CD44 host protein is known to be incorporated into HIV envelopes (reviewed in³⁴) and binding to anti-CD44 antibodies is used as a method to purify infectious virus particles. Therefore, we performed virus capture experiments with virus particles produced by CD44-positive cells (LC5-RIC) and magnetic microbeads conjugated to antibodies against CD44. Captured virus particles were quantified by HIV-1 Gag-p24 ELISA and levels of infectious virus particles determined with LC5-RIC reporter cells. As shown in Fig. 4C, virus particles were captured by the anti-CD44 microbeads both from Ci-treated and untreated virus samples. However, virus captured from Ci-treated samples showed strongly diminished infectivity, compared to virus captured from untreated samples.

These results indicate that Ci components block virus infectivity by targeting the virus envelope and inhibiting binding activity of the viral gp120 envelope protein but do not interact with the host-cell derived CD44 protein in the virus particle.

Ci extract contains multiple components with anti-HIV activity. To gauge the complexity of compounds displaying anti-HIV activity in Ci extract, Ci extract was subjected to bioassay-guided fractionation. Ci extract was separated by a multi-step procedure validated for deconvolution of complex plant extracts³⁵. First, a set of 96 fractions were prepared from Ci extract. These fractions were evaluated for anti-HIV activity by single-dose testing of all fractions (5 $\mu\text{g/ml}$), followed by analysis of dose-dependency of anti-HIV activity of 45 of the most active fractions. Several potential activity clusters were identified, of which one was exemplarily subjected to fine fractionation (Fig. 5A). Anti-HIV activity was demonstrated for the majority of fine fractions derived from this cluster, with several fine fractions yielding EC_{50} values below 5 $\mu\text{g/ml}$ (Fig. 5B). Fine fraction F was chosen for further purification, based on high antiviral activity and favorable properties for structure elucidation, yielding high-resolution fractions F1-F9. Testing of antiviral activities of these high-resolution fractions (Fig. 5C) revealed two candidates (F-3, F-4) with high anti-HIV activity ($EC_{50} < 1.1$ $\mu\text{g/ml}$). Finally, HPLC analysis of high-resolution fraction F-4 yielded a single peak (99% purity).

These results demonstrate that Ci extract contains multiple anti-HIV compounds which can be separated by chemical extract deconvolution.

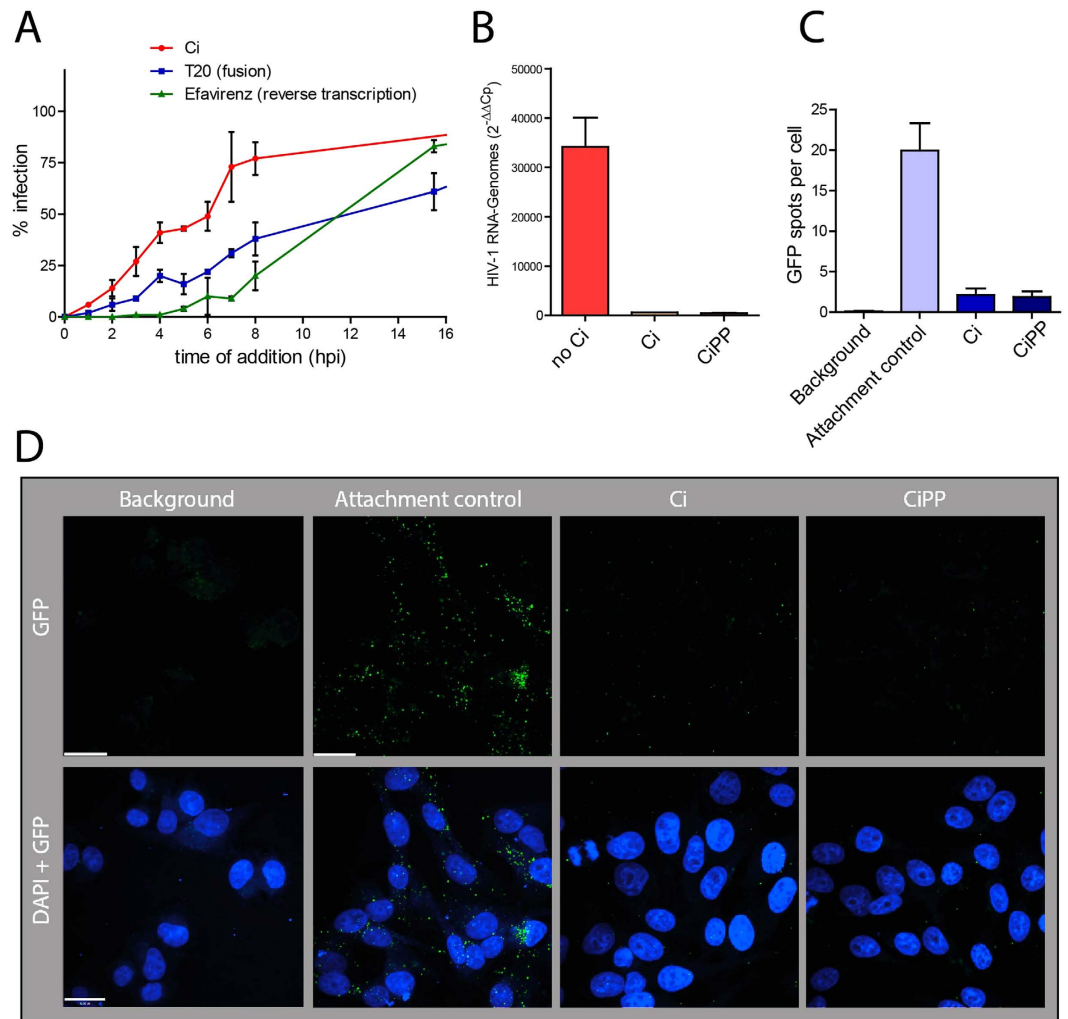


Figure 3. *Cistus incanus* extract blocks invasion of cells by HIV. (A) Antiviral activity of *Ci* extract inhibits a very early phase of the HIV replication cycle. Time-of-addition (TOA) assays were performed with *Cistus incanus* (Ci) extract or the reference inhibitors T20 (virus-cell fusion) and Efavirenz (reverse transcription). Each time point was assayed in triplicate wells and infection levels normalized to those of untreated cultures (=100%). Symbols indicate mean values and error bars standard deviation of the mean. (B) *Ci* extract prevents delivery of genomic HIV RNA to cells. LC5-CD4 cultures were exposed to HIV-1_{LAI} in the absence (no Ci) or in the presence of 100 μg/ml whole *Ci* extract (Ci) or a *Ci*-derived polyphenol enriched fraction (CiPP) for 4 hours. Efavirenz was included to block HIV reverse transcription in target cells. RNA was isolated from cultures after 4 hours of virus exposure, cDNA generated and used for quantitative PCR analysis. Levels of HIV-1 sequences were related to RNA polymerase II reference sequences. The data is expressed as relative levels of HIV-RNA genomes in cultures exposed to HIV-1, normalized to background (i.e. no virus). Each bar represents the mean results of 3 virus exposure experiments Error bars indicate the standard deviation of the mean. (C,D) *Ci* extract prevents attachment of virus particles to cells. Spinning disc confocal microscopy was used to analyse the influence of *Ci* or CiPP on the attachment of GFP-labelled HIV-1 virus particles to LC5-RIC cells. Cells were exposed to virus for 4 hours. The fusion inhibitor T20 was included to block entry of virus into target cells. Controls consisted of cells exposed to virus without *Ci* (attachment control) and unexposed cells (background). Cell nuclei were visualized by DAPI staining. (C) Quantitative analysis of cell-associated GFP-spots. GFP-signals associated with 60 cells from 4 images were analysed for each sample. The bars represent the mean values of GFP signals per cell and the error bars indicate the standard deviation of the mean. (D) Representative images for each sample. Scale bars: 20 μm.

No emergence of *Ci*-resistant HIV during long-term passaging. To investigate potential emergence of resistant viruses during long-term *Ci* treatment, we passaged HIV-1_{LAI} on LC5-RIC cells multiple times in the presence of *Ci* and tested the susceptibility of the passaged virus to *Ci* at regular intervals. 48 rounds of infection (=24 weeks) were performed and for each round of infection HIV-1 was incubated with *Ci* at concentrations corresponding to either EC₅₀ or EC₉₀ for 24 hours, followed by incubation without *Ci* for 2–3 days for virus outgrowth. Sensitivity of the outgrowth virus to inhibition by *Ci* extract was analysed after every second round of infection. This procedure was also performed without *Ci* as control.

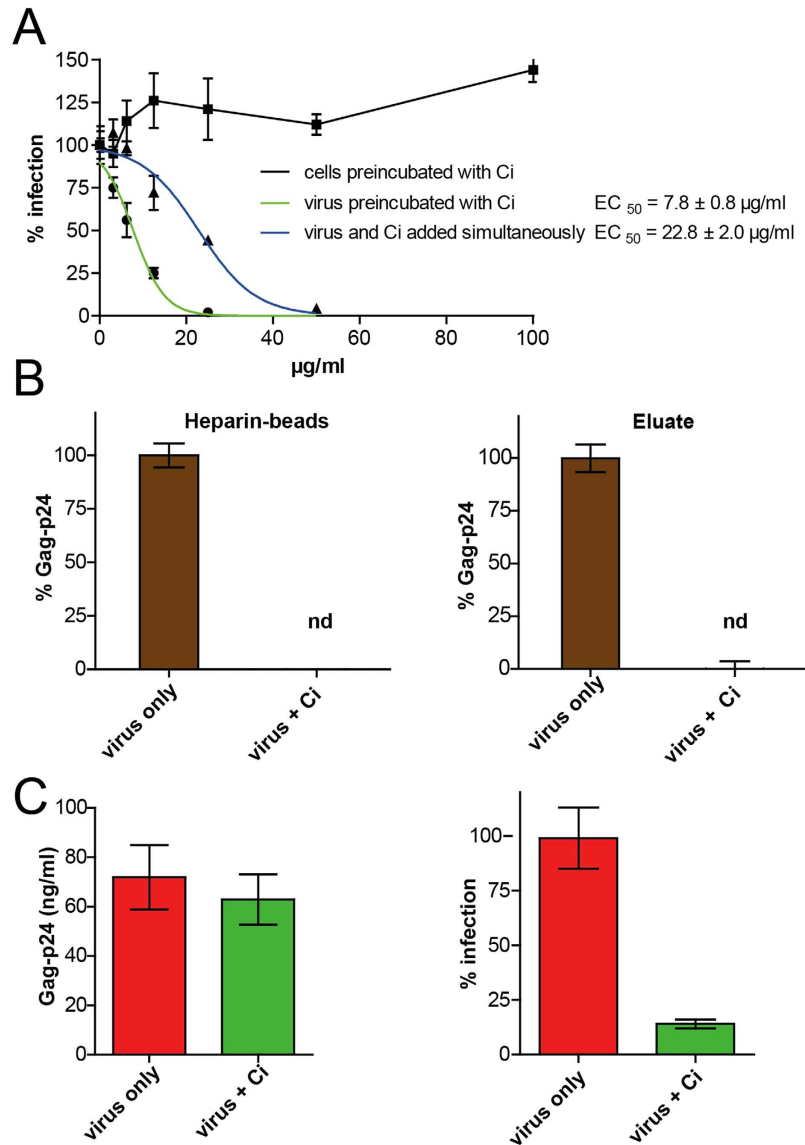


Figure 4. HIV-inhibitory activity of *Cistus incanus* extract selectively targets viral envelope proteins.

(A) Antiviral components of *Ci* extract interact with virus particles but not target cells. The graph shows the effects of preincubation of virus inoculum (HIV-1_{LAI}) or target cells (LC5-RIC) with *Ci* extract on its anti-HIV-1 activity. As control, antiviral activity was assayed under standard conditions, in which virus inoculum and *Ci* extract were added to cells simultaneously. Symbols signify mean values for each extract dilution analysed in triplicate and error bars the standard deviation of the mean. Values for infection of cultures treated with *Ci* extract are expressed relative to untreated cultures (=100% infection). (B) *Ci* treatment blocks binding of virus particles to heparin. Virus capture assays were performed with heparin beads and virus samples containing HIV-1_{LAI} incubated either with (virus + *Ci*) or without *Ci* extract (virus only). Captured virus was quantified in the bead fraction (left panel) and in the eluate (right panel) by Gag-p24 ELISA. Levels of Gag-p24 antigen captured from *Ci* treated virus samples are expressed relative to Gag-p24 antigen levels captured from untreated control samples (=100%). Results are shown for two independent capture experiments performed with different amounts of virus. Gag-p24 levels were normalized to values measured for the control sample (virus only =100%). Columns signify mean values and error bars the standard deviation of the mean (nd = not detected). (C) *Ci* treated virus particles are captured by antibodies that bind to cell-derived CD44 proteins in virus envelopes. Virus captures assays were performed with microbeads conjugated with anti-human CD44 antibodies and HIV-1_{LAI} virus samples incubated with (virus + *Ci*) or without *Ci* extract (virus only). Levels of captured virus were determined by Gag-p24 ELISA of the eluate (left graph). Infectivity of the captured virus was determined with LC5-RIC cells (right graph). Bars represent the mean results of 3 replicates for each sample and error bars the standard deviation of the mean.

As shown in Fig. 6, virus retained sensitivity to *Ci* treatment during the entire observation period at a stable level. Sensitivity of virus produced in the presence of *Ci* extract was comparable to sensitivity of virus produced

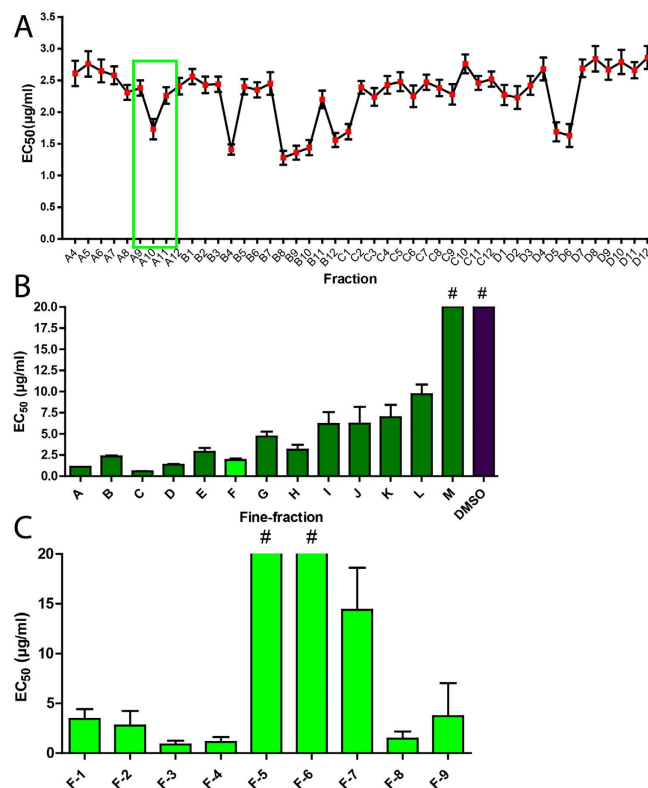


Figure 5. Profiling of anti-HIV activity during iterative fractionation of *Cistus incanus* (Ci) extract reveals multiple active compounds. (A) Anti-HIV activity profile of 45 high-activity fractions obtained during initial separation of Ci extract. The high-activity fractions A4–D12 were identified by single-dose anti-HIV screening of a set of 96 fractions generated in the initial separation step. Screening was performed with LC5-RIC cells and HIV-1_{LAI}. For quantification of anti-HIV activity of each high-activity fraction, cells were exposed to the virus in the presence of different concentrations of the fraction, ranging from 100 µg/ml to 3.125 µg/ml (2-fold serial dilutions) and EC₅₀ values determined. Symbols signify mean EC₅₀ values of triplicate assays for each fraction and error bars the standard deviation of the mean. The frame marks an exemplary activity cluster, consisting of fractions A8–A12. (B) Anti-HIV activities of fine fractions derived from the exemplary activity cluster identified in A (fractions A8–A12). The activity cluster was subjected to a second fractionation step, yielding fine fractions A–M, which were then assayed for anti-HIV activity. Bars indicate the mean values of 3 independent assays for each fraction and error bars the standard deviation of the mean. #: No antiviral activity detected in the measured concentrations. (C) Anti-HIV activities of high-resolution fractions derived from fine fraction F. Fine fraction F was subjected to a third fractionation step, yielding high-resolution fractions F1 to F9 which were again assayed for anti-HIV activity. Bars indicate the mean values of 3 independent assays for each fraction and error bars the standard deviation of the mean. #: No antiviral activity detected at the highest concentration.

in the absence of Ci treatment. These results indicate that long-term Ci treatment did not lead to emergence of Ci resistant viruses.

Ci extract also targets Filovirus envelope proteins. This study shows that antiviral activity of Ci extract is directed against HIV-1 and HIV-2. Together with the previously reported inhibition of Influenza A virus^{21,26}, these results strongly suggest that Ci extract has antiviral activity against multiple unrelated viruses. To further explore the spectrum of viruses inhibited by Ci, we investigated whether Ci extract also targets Ebola virus (EBOV) and Marburg virus (MARV) envelope glycoproteins. To this end, we generated pseudotyped HIV-1 virions carrying either Ebola virus Zaire subspecies (ZEBOV) or MARV glycoproteins^{36,37} instead of HIV-1 gp120 in their envelopes. As shown in Fig. 7A, whole Ci extract as well as Ci-derived polyphenols (CiPP) inhibited infection by the ZEBOV and MARV pseudotyped viruses (Fig. 7A). Antiviral activities against the pseudotyped virus proteins were comparable to those obtained for virions with native HIV-1 gp120 (Compare Figs 7A, 1 and 2). In contrast, the ZEBOV and MARV pseudotyped virions were not affected by the HIV-1 fusion inhibitor T20 up to concentrations of 500 nM, which is about 100-fold higher than the previously determined EC₅₀ value for T20 in the EASY-HIT system²⁹. Using GFP-labelled ZEBOV pseudotyped viruses, we demonstrated that Ci extract inhibited virus attachment to cells (Fig. 7B). Furthermore, we found that the fine fractions generated from cluster 1 and cluster 2 also inhibited infection of the ZEBOV pseudotyped virus, yielding a similar activity profile as that obtained with HIV-1 particles carrying native gp120 (Fig. 7C; compare with Fig. 5B).

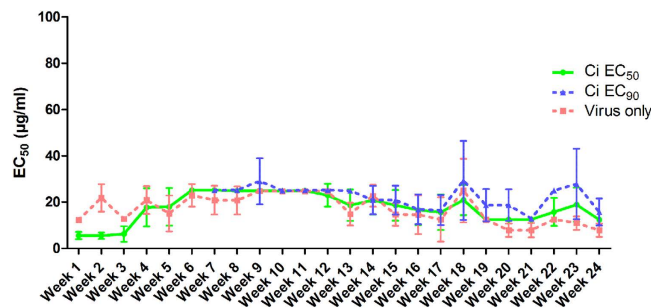


Figure 6. Lack of emergence of HIV-1 resistance during long-term virus passaging in the presence of *Cistus incanus* extract. Virus was passaged with or without Ci extract for 48 passages (i.e. 24 weeks) and monitored for sensitivity to inhibition by Ci extract every week. For each passage with Ci extract, LC5-RIC target cells were exposed to HIV-1_{LAI} virus in the presence of Ci extract for one day, followed by expansion of the escape virus for 2–3 days without Ci extract. Long-term virus passaging was performed with two concentrations of Ci extract, corresponding to EC₅₀ (CiEC₅₀ line graph) or EC₉₀ (CiEC₉₀ line graph) inhibitory concentrations against the initial virus inoculum. Passaging in the presence of the higher Ci extract concentration (CiEC₉₀) was initiated with virus collected after 6 weeks of passaging with the lower Ci extract concentration. Virus was passaged in parallel without Ci extract as control (Virus only line graph). Virus collected from every second passage was evaluated for inhibition by Ci extract in infection assays with different concentrations of Ci extract (100 µg/ml to 3.125 µg/ml; two-fold serial dilutions) or without extract (= 100% infection). Symbols represent the mean EC₅₀ determined for each virus sample in three independent experiments, and the error bars the standard deviation of the mean.

Together these results demonstrate that antiviral activity of Ci extract is not limited to HIV-1 gp120 but also extends to Ebola virus and Marburg virus envelope glycoproteins, preventing these viral proteins from mediating infection.

Discussion

There is an urgent need for potent, inexpensive and safe antiviral agents to enable treatment of acute and chronic life-threatening viral infections on a global scale. Various medicinal plants have been shown to inhibit major human viral pathogens like Herpesviruses, Dengue Viruses, Hepatitis B and C viruses and HIV^{13,38–43}. Despite of these extensive studies, herbal products have not yet been advanced into broadly available, safe and efficacious medicinal agents for global treatment of viral infections⁴⁴.

The standardized commercial Ci extract Cystus052[®] has undergone clinical testing, displays many biological activities beneficial to human health, and was previously shown to inhibit Influenza A virus replication in cell culture²⁶ and in an animal model²¹ (see also Introduction). Here we demonstrate potent antiviral effects of Ci extract against HIV and Filoviruses and show that Ci extract targets viral envelope components, blocking attachment of virus particles to cells.

Study of the anti-HIV activity of Ci extract (both whole extract and polyphenol-enriched fraction) with multiple HIV isolates revealed comparable antiviral efficacies against clinical isolates representing different major HIV genotypes, including HIV type 1 and type 2 and HIV-1 group O as well as group M. This finding was unexpected because of the high genetic diversity between HIV types 1 and 2 (over 50% amino acid diversity) and HIV-1 group M and O (over 35% amino acid diversity)⁴⁵. Furthermore, HIV-2 and HIV-1 group O are less susceptible to several approved anti-HIV drugs than HIV-1 group M. Thus HIV-2 is inherently resistant to T20 (Efavirenz) and HIV-1 group O to several integrase and nonnucleoside reverse transcriptase inhibitors^{46–49}. In addition, Ci extract prevented infection by virus particles containing Ebola or Marburg virus envelope proteins, demonstrating that antiviral activity of Ci extract also targets envelope components of Filoviruses. Together with previous reports of anti-Influenza A activity^{21,26}, these results indicate that Ci extract displays broad-spectrum antiviral activity against multiple unrelated, major human viral pathogens (i.e. HIV, Marburg virus, Ebola virus, Influenza A virus).

Different experimental assays designed to investigate the mode of antiviral activity of Ci extract revealed that Ci extract prevents virus particles from interacting with the host cells. Treatment with Ci extract blocked delivery of the viral RNA into cells, demonstrating that Ci acts at the level of entry. Time-of-addition assays indicated that Ci treatment blocked entry of the virus at a very early stage, preceding fusion of viral and cellular membranes. Furthermore, Ci treatment inhibited attachment of GFP-labelled virus particles (HIV-1 and Ebola virus pseudotyped) to cells. Together these results confirm that Ci treatment prevents primary attachment of virus particles to cells, a mechanism-of-action conferring maximum protection of host cells against virus attack. In contrast, many other HIV and Ebola virus entry inhibitors act at a later step of the entry process and/or target host cellular components and do not protect cells from exposure to viral envelope proteins^{50–52}. The collection of current clinically approved anti HIV drugs contains only two entry inhibitors³, i.e. fusion inhibitor T20 and the CCR5 co-receptor blocker Maraviroc. The majority of approved drugs target HIV enzymes i.e. protease, reverse transcriptase and a few integrase inhibitors. Since Ci extract inhibits HIV by a different mode-of-action it should be capable of inhibiting viruses with resistances to commonly used drugs. Indeed we showed that Ci extract effectively blocked *in vitro* replication of a multi-resistant HIV-1 isolate (HIV-1_{V13-03413}) with mutations conferring resistance to all approved protease and reverse transcriptase inhibitory drugs.

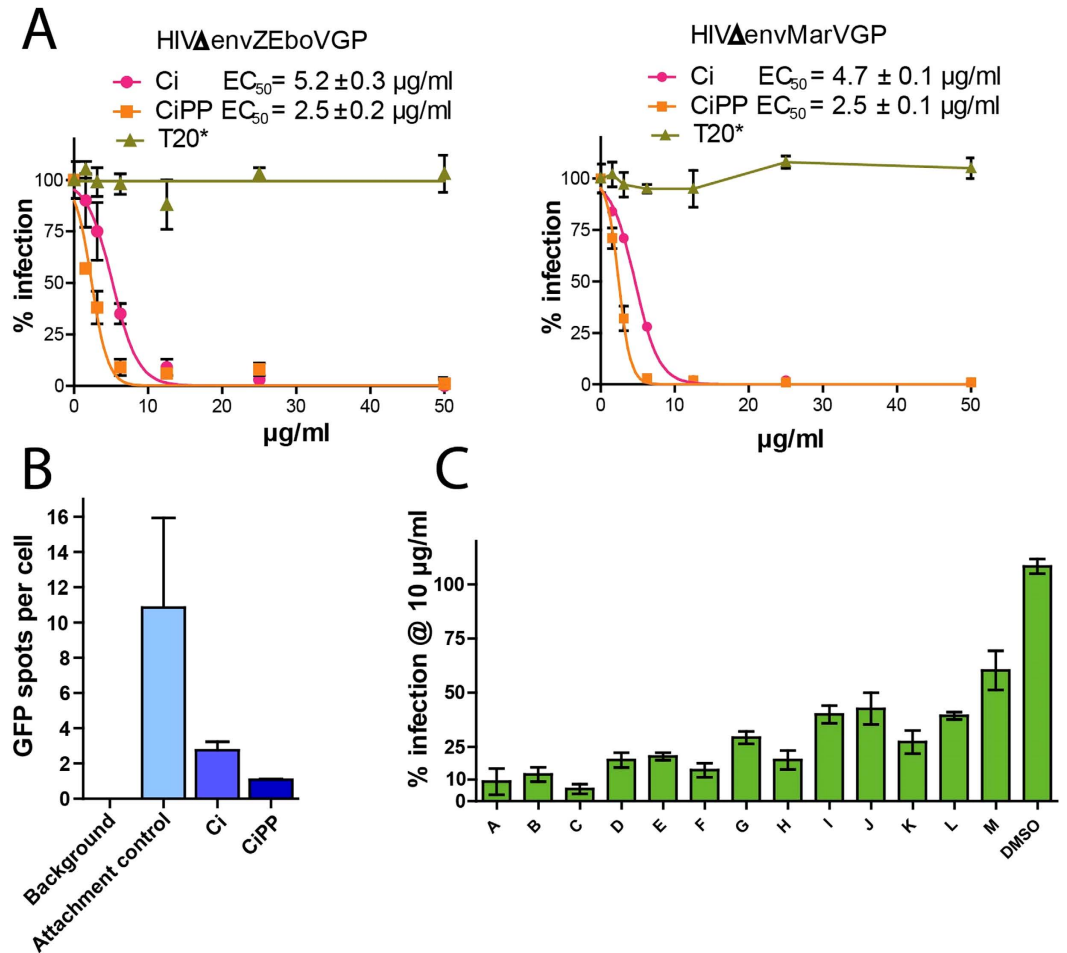


Figure 7. *Cistus incanus* (Ci) extract block Filovirus envelope proteins in pseudotyped lentivirus particles. Lentivirus particles pseudotyped with Filovirus envelope glycoproteins were produced by cells co-transfected with a plasmid containing an *env*-defective HIV-1 provirus (pBR-NL43-Gag-iGFP- Δ env) and plasmids encoding an envelope glycoprotein from Zaire Ebola virus (ZEBOV-GP) or Marburg Virus (MARV-GP). **(A)** *Ci* extract and the polyphenol-enriched fraction of *Ci* extract (CiPP) inhibit infection of cells by virus particles pseudotyped with envelope proteins from Ebola virus (left panel) or Marburg virus (right panel). LC5-RIC cells were exposed to pseudotyped lentivirus particles in the absence or in the presence of different concentrations of *Ci* extract, ranging from 50 $\mu\text{g/ml}$ to 1.56 $\mu\text{g/ml}$ (serial 2-fold dilutions). The HIV-1 fusion inhibitor T20 was assayed in parallel (500 nM to 15.63 nM). Dose-response curves are shown. EC_{50} is indicated for *Ci* and CiPP. For T20, the asterisk (*) signifies absence of antiviral activity against pseudotyped virus particles under test conditions. Symbols signify the mean values of triplicates, and the error bars the standard deviation of the mean. **(B)** *Ci* and CiPP prevent primary attachment of pseudotyped virus particles to cells. Attachment assays were performed with GFP-labelled virus particles pseudotyped with envelope glycoproteins for Ebola virus Zaire. GFP-signals associated with cells were quantified by spinning disc confocal microscopy and Volocity 6.2.1 imaging software. 60 cells in 4 images were analysed for each sample. The bars represent the mean values of GFP signals per cell and the error bars indicate the standard deviation of the mean. **(C)** Fine fractions A-M generated during reiterative fractionation of *Ci* extract (see Fig. 5B) inhibit infection by pseudotyped virus particles. Antiviral activity was tested with a fixed dose of *Ci* extract (10 $\mu\text{g/ml}$). Bars indicate the mean values of triplicate tests for each fraction and error bars the standard deviation of the mean.

This study also provides evidence that antiviral components of *Ci* extract target viral envelope proteins and show selectivity for viral over cellular components. Pre-incubation assays confirmed that antiviral components of *Ci* extract specifically target virus particles but are not retained by host cells. Further support for virus-selectivity of antiviral activity of *Ci* extract comes from the HIV-1 virus capture assays performed in this study, which show that *Ci* extract inhibits gp120-mediated binding of virus particles to heparin, but does not prevent binding of the host-cell derived CD44 protein with its antibody ligand. Selective blocking of gp120 but not CD44 protein in virus particles suggests that components of *Ci* extract specifically mask gp120 on viral envelopes rather than unspecifically enwrapping entire virus particles.

Not only HIV-1³³ but numerous other unrelated viruses use heparin and heparan sulfate moieties of proteoglycans for primary attachment to cells. In addition to Filoviruses, these include Herpes viruses and Hepatitis B

and C viruses^{53–56}. Our finding that Ci extract blocks binding of viral components to cell moieties used by numerous viruses for attachment provides further support for broad activity of Ci extract against different viruses. Recently, a single-molecule natural product from green tea was also reported to inhibit primary attachment of different virions to heparan sulfate glycans⁵⁷, providing evidence for the occurrence of broad-spectrum natural products that block virus attachment to cells. With respect to HIV, targeting of gp120 suggests that Ci extract may also protect cells from harmful consequences of gp120-cell interactions that go beyond HIV entry. These include induction of aberrant signaling events^{58,59}, apoptosis of T-cells⁶⁰ and neuronal damage^{61,62}.

Cell culture experiments designed to investigate the propensity of Ci extract to induce virus resistance revealed no outgrowth of Ci-resistant virus during 24 weeks (=168 days) of passaging of HIV-1 in the presence of Ci extract. In contrast, the risk of virus resistance was reported to be much higher for the single-compound attachment inhibitor Fostemsavir (BMS-663068)⁶³. Thus, 14 days of selection in cell culture were sufficient to generate Fostemsavir-resistant HIV-1_{LAI} viruses and a single amino acid substitution in HIV-1_{LAI} Env was sufficient for resistance. Bioassay-guided fractionation studies indicate the presence of multiple antiviral compounds in Ci extract. This combination of active molecules is presumably responsible for the low risk of the emergence of resistant viruses during Ci treatment, compared to treatment with single-compound antiretroviral drugs.

This study demonstrates potent and broad antiviral activity of Ci extract under cell culture conditions. Furthermore, clinical studies have shown a favorable safety profile for Ci extract *in vivo*^{27,28}. Although these observations support further exploration of the antiviral activities of Ci extract, it is important to point out that we do not advocate the use of Ci extract as drug on the basis of the results presented in this study. Evaluation of the potential of Ci extract for *in vivo* antiviral therapeutic applications requires extensive future investigations. An important step in this direction will be the identification of individual antiviral agents from Ci extract and analysis of their pharmacokinetic properties. Another avenue for exploration of *in vivo* application of Ci extract is its potential use as topical microbicides to prevent sexual transmission of HIV transmission⁶⁴. The resistance of antiviral activity to low pH and high temperatures found in this study are further encouraging properties of Ci extract supporting its exploration for topical applications.

Finally, Ci extract may also provide a source for mining of novel antiviral agents. Thus, natural products are regaining popularity for drug discovery because they overcome various restrictions of synthetic libraries, including limited chemical diversity⁶⁵. Furthermore, natural products proved to be very successful leads for drug development in the past, with 34% of drugs approved by the FDA from 1981 to 2010 being either based on or derived from natural products⁶⁶. We show that antiviral activity can be isolated from Ci extract by enrichment of polyphenolic compounds and is retained throughout numerous sequential fractionation steps. This indicates that active agents with reduced complexity can be produced from Ci extract. Identification of single active compounds from complex or simplified Ci extract may yield leads for novel antiviral agents, as well as provide signature molecules for monitoring of pharmacological properties of Ci-derived antiviral agents in clinical studies.

Conclusion

Ci extract combines broad antiviral activity with low risk of virus resistance. Its mechanism-of-action involves blocking of primary virus attachment to cells by selective targeting of the viral envelope glycoproteins. In contrast, many other natural products with broad-spectrum antiviral activity target host cell components⁶⁷. Our results demonstrate that multiple antiviral components within the Ci extract block virus attachment to the host cell. Altogether, the broad and potent *in vitro* antiviral effects of Ci extract demonstrated in this study support the further exploration of Ci extract and its components for novel antiviral approaches.

Materials and Methods

Viruses and virus production. Production and quantification of HIV-1 stocks was carried out as described in^{15,29}. Briefly, stocks of HIV-1 laboratory isolates were produced by transfecting HEK 293 T cells with one of the following proviral plasmids obtained through the NIH AIDS Research and Reference Reagent Program, Division of AIDS, NIAID, NIH: pLAI.2 (from Dr. Keith Peden⁶⁸), pNL(AD8) (from Dr. Eric O. Freed⁶⁹). GFP-labelled viruses were produced by transfection with pBR-NL43-Gag-iGFP³². Virions with CD44 in the envelope were generated by infecting LC5-RIC cells (positive for surface CD44) with HIV-1_{LAI} virus. Virus-containing cell culture supernatants were harvested 72 h post transfection/ infection and stored at -80°C . Virus levels in virus stocks were quantified by Gag-p24 antigen enzyme-linked immunosorbent assay (ELISA) (Advanced Bioscience Laboratories, Maryland) and by titration on LC5-RIC cells as described in²⁹.

Primary clinical HIV-isolates HIV-1_{MVP899-87}, HIV-1_{MVP5180-91}, HIV-2_{MVP10668-93} and HIV-1_{V13-03413B} were obtained as described in⁷⁰. The multiresistant isolate HIV-1_{V13-03413B} was obtained from a patient with virologic treatment failure and shown by sequence analysis to contain multiple drug resistance mutations in the regions encoding the reverse transcriptase (RT) and protease (PR). RT: T69I, V75I, L100I, K103N, Y115E, V118I, Q151M, V179L, M184V, L210E, K219E, H221Y; PR: L10I, V11I, K20R, V32I, L33E, E35D, M46I, I54L, Q58E, A71V, G73T, V82A, I84V, L90M. For production of clinical isolates, frozen stocks of HIV-infected H9 cells in virus containing cell-culture supernatant were thawed and cultured for 6 cell passages. Every three to four days, about half of the infected cell population was replaced with uninfected H9 cells and about 60–70% of the culture supernatant of the infected cell population replaced with fresh medium. Infectious virus levels in culture supernatants were titrated with LC5-RIC reporter cells as described in²⁹. HIV inhibition experiments were performed with volumes of virus inoculum yielding an at least 100-fold increase of relative fluorescent signal intensities of LC5-RIC reporter cultures in the absence of inhibitors.

For the production of Ebola or Marburg virus glycoprotein pseudotyped virus, HEK293T cells were co-transfected with the HIV backbone plasmid pBR-NL43-Gag-iGFP- Δenv ⁷¹ and with the glycoprotein expression plasmids pCAGGS-ZEBOV-V5³⁶ or pCAGGS-Marv-V5³⁷ and pseudotyped virus particles were harvested 72 h post transfection and stored at -80°C .

Cells and cell culture. Adherently growing cell lines (HEK293T, LC5-derivates) were cultured in Dulbecco's Modified Eagle's Medium (DMEM; Gibco® Life Technologies, USA) supplemented with 10% FCS and 1% antibiotic-antimycotic solution (Gibco® Life Technologies, USA). H9 cells were cultured in suspension, in Very-Low-Endotoxin Roswell Park Memorial Institute-1640 Medium (VLE-RPMI 1640; Gibco® Life Technologies, USA), supplemented with 10% FCS and 1% antibiotic-antimycotic solution (Gibco® Life Technologies, USA). All cells were maintained under standard conditions (37 °C; 5% CO₂).

The human embryonal kidney cell line HEK293T (ATCC®-Number CRL-11268) and the human T-lymphoma cell line H9 (ATCC®-Number HTB-176) were obtained through ATCC. The LC5 cell line is derived from HeLa cells. The generation, characteristics and culture of LC5-CD4, LC5-RIC and LC5-RIC-R5 are described in detail in^{15,29,72}. Briefly, LC5-CD4 cells contain stably integrated sequences for expression of human CD4 and neomycin resistance. LC5-RIC cells were derived from LC5-CD4 cells by stable integration of a DsRed-reporter gene under the control of HIV-1 Tat and Rev and sequences for hygromycin B resistance. LC5-RIC-R5 cells were derived from LC5-RIC cells by stable integration of a human CCR5-encoding cDNA and sequences for puromycin resistance. LC5-derived cell lines were cultured with the appropriate antibiotics at regular intervals.

Peripheral blood mononuclear cells (PBMC) were isolated from buffy-coats by Ficoll (Biochrom AG, Germany) gradient centrifugation as described before in Fuss *et al.*⁷³. Cells were then washed and treated with ammonium chloride potassium (ACK) buffer (Gibco® Life technologies, USA) to remove residual platelets and erythrocytes. The cells were immediately cultivated in VLE-RPMI 1640 medium (Biochrom AG, Germany) supplemented with 10% FCS and 1% antibiotic-antimycotic solution (Gibco® Life technologies, USA) overnight and 20 U/ml hIL-2 (Roche, Germany) and 1 µg/ml phytohemagglutinin (PHA) (Biochrom AG, Germany) were added to the cells for stimulation. The cells were stimulated for three days before they were used for infection.

Cistus incanus extracts and fractions. The main source of Ci extract used for antiviral testing was the medicinal product CYSTUS052® (Dr. Pandalis Urheimische Medizin GmbH und Co. KG, Germany). In addition antiviral activity was confirmed in Ci extract generated from dried *Cistus incanus* herbs (Cistus incanus Bio Tee, Dr. Pandalis Urheimische Medizin GmbH und Co. KG, Germany) and from fresh plants (Cystus®, *Cistus incanus* ssp. *Tauricus*; Rühlemann's Kräuter und Duftpflanzen, Horstedt, Germany) by boiling the plant material in water for 1 hour. All Ci extracts were sterile-filtered (0.45 µm syringe-filter Millex®-HV, Merck Millipore, Darmstadt, Germany), dried in an Eppendorf Vacuum Concentrator, the weight of the dry mass determined and the dry mass stored at -20 °C until use. For testing, the dry mass was dissolved in cell culture medium, with stock solutions typically containing 10 mg dry mass per ml.

Polyphenols were enriched from Ci extract derived from CYSTUS052® as described in Helfer *et al.*¹⁵. Briefly, polyphenols were adsorbed to polyvinylpyrrolidone (PVPP, Sigma Aldrich) and eluted with 0.5 N NaOH. Eluates were equilibrated to pH 6 with HCl and purified by solid-phase extraction (SPE) with a C18 SPE-column (Bond Elut C18, Agilent Technologies, California, USA).

Separation of Ci extract for extract deconvolution was performed by Bicol GmbH, using proprietary technology for deconvolution of plant extracts.

Cell-based assays for evaluation of antiviral activities. *Inhibition of Infection Assays.* The standard assay format for testing inhibition of virus infection by antiviral agents is described in Kremb *et al.*^{15,29}. Briefly, LC5-RIC reporter cells were seeded in 96-well plates at a density of 1×10^4 cells per well in 100 µl culture medium. After 24 hours, test compounds and appropriate volumes of virus inoculum resulting in 10 pg Gag-p24/cell or ≥ 100 relative fluorescence intensity increasing units per culture were added to the cells. Plates were incubated for 48 hours and fluorescent signals of cultures were measured with a Tecan Infinite M200 plate reader (Tecan, Crailsheim, Germany) at excitation/emission wavelengths of 552/596 nm. Test compounds were assayed in at least 6 concentrations, generated by 2-fold serial dilutions. Controls consisted of cultures exposed to the virus without test compound (=100% infection) and cultures lacking virus and compound (=background). Each compound concentration was tested in at least triplicate wells and controls in six wells. Fluorescent signals were corrected for background signals and fluorescent signals of compound-treated cultures normalized to those of untreated, virus-exposed cultures (=100% infection). The antiviral potency of the test compound was expressed as the half maximal effective concentration (EC₅₀), which signifies the concentration calculated to yield 50% inhibition of infection.

Inhibition of infection of primary human target cells was tested with stimulated PBMCs seeded in 96-well plates (1×10^5 cells per well) in culture medium containing hIL-2 and PHA (see above) and cultured for 24 hours. Virus inoculum (10 pg Gag-p24/cell) and test compounds were added to the cultures (120 µl total culture volume). Test compounds were assayed at different concentrations (see above) in at least 3 replicate wells for each concentration and controls in 6 replicate wells. After 48 hours, 20 µl of culture supernatant from each well was transferred to LC5-RIC reporter cells and fluorescent signals of reporter cultures measured 72 hours later.

Time-of-addition (TOA) assays. TOA assays were performed with LC5-RIC cells in 96-well plates. The assay format was similar to that used for determining inhibitor potencies (see above), including positive and negative controls, with a few modifications. Inhibitors were added to the wells either simultaneously with the HIV-1_{LAI} virus inoculum (defined as time point 0) or at various later time points and fluorescent signals of cultures determined 48 hours after virus addition. In addition to Ci extract, T20 and Efavirenz were used as reference inhibitors (both obtained through the NIH AIDS Research and Reference Reagent Program, Division of AIDS, NIAID, NIH). To ensure full inhibition, inhibitor concentrations used for treatment exceeded $5 \times EC_{50}$, i.e. 100 µg/ml Ci extract, 100 nM Efavirenz and 500 nM T20.

Preincubation assays were performed in a standard infection assay format (see above), using different concentrations of Ci extract ranging from 100 µg/ml to 3.12 µg/ml (2-fold serial dilutions). For preincubation of cells

with Ci extract, LC5-RIC cultures were incubated with Ci extract for 3 hours, cells were washed once with PBS and virus (HIV-1_{LAI}) added in fresh medium to cells for infection. For preincubation of virus inoculum with Ci extract, virus inoculum was preincubated with the appropriate dilutions of Ci extract for three hours and the virus-Ci mixture transferred to LC5-RIC cells for infection. In a parallel plate, cells were exposed simultaneously to Ci extract and virus inoculum, corresponding to the conditions used in the standard inhibition of infection assay.

Virus attachment assays were performed as described in Helfer *et al.*¹⁵. Briefly, LC5-RIC cells were seeded on glass cover slips (24 × 24 mm) in 12-well plates and were incubated with GFP-labelled HIV-1 virions or pseudotyped virus particles (1 ml culture supernatant of HIV-1 or pseudotyped virus producing cells per well) either in the presence of 100 µg/ml whole Ci extract (Ci) or Ci polyphenol fraction (CiPP). As positive control for virus attachment, cells were exposed to virus without Ci extract. The background control consisted of cells cultured without virus and Ci extract. Attachment of HIV-1 virions was assayed in the presence of 50 nM T20 fusion inhibitor to block virus entry into cells. After incubation for 4 hours, cells were washed with PBS, fixed with 2% paraformaldehyde for 30 min, washed again 3 times and incubated in DAPI-staining solution (1:10 000) for 15 min to stain intracellular DNA. Coverslips were fixed onto glass slides and samples analysed by spinning disk confocal microscopy, using a Nikon TiE equipped with the Perkin Elmer UltraView Vox system (exposure times GFP: 100 ms, DAPI: various; Brightfield: various). Volocity 6.2.1. software was used to quantify virus particles (=GFP spots; defined as all pixels within a radius of 1 µm around the brightest spot, intensity threshold 755). DAPI-positive cells were counted manually.

Virus capture assays. Virus capture assays based on binding of host-derived CD44 in viral envelopes to immobilized ligand were performed with magnetic microbeads conjugated with anti-human CD44 antibodies (µMACS VitalVirus HIV Isolation Kit, Miltenyi Biotec, Germany) and HIV-1_{LAI} produced by LC5-RIC cells (CD44 positive), according to manufacturer's instructions. Culture supernatants of HIV-1_{LAI} infected LC5-RIC cells were centrifuged at 3,000 g to remove cell-debris. Samples (1 ml) containing equivalent amounts of HIV-1 Gag-p24 (59 ng/µl) and 200 µg/ml Ci extract or DMEM were incubated under standard cell culture conditions. After 2 hours, anti-CD44 microbeads (250 µl) were added to the samples and incubation continued for 30 minutes. The virus/microbead mixture was loaded onto a µMACS column within a magnetic field and afterwards columns were washed 3 times. For elution of virus, columns were removed from the magnetic field, and virus particles were eluted with 300 µl DMEM. Virus levels in eluate, the flow-through and wash fractions were determined by Gag-p24 antigen ELISA and by titration of 20–2.5 µl in a 2-fold serial dilution in a standard infection assay with LC5-RIC cells.

The virus capture assays based on binding of viral gp120 envelope protein to heparin-beads were performed with a procedure modified from Salvador *et al.*⁵⁴. For preparation of virus samples, 10 ml culture supernatant of HIV-1_{LAI} producing cells were concentrated by ultracentrifugation with Amicon® Ultra – 15 100 k Centrifugal Filter Units (Merck Millipore, Darmstadt, Germany) and the retentate taken up in 10 ml binding buffer (10 mM sodium phosphate in PBS). 1 ml virus solution was either incubated with 150 µg/ml Ci or the respective amount of PBS for 3 hours. Heparin-beads were extracted from HiTrap™ Heparin HP, 1 ml columns (GE Healthcare; Germany), washed twice with PBS and resuspended in 5 ml binding buffer. 200 µl bead-solution was added to 600 µl virus-solution (+ or –Ci) and the virus-bead mixtures were incubated for 10 minutes at RT. Beads were then pelleted at 900 g for 3 min, the supernatant was discarded and the bead-pellet washed twice with 1 ml PBS. A sample of the bead-pellet (100 µl) was removed for evaluation of virus binding to beads. The remaining bead-pellet was resuspended in elution buffer (10 mM sodium phosphate in PBS; 2 M NaCl), beads were removed by centrifugation and the supernatant (=eluate) was collected. Bead-pellets and eluates were stored at –20 °C and evaluated for the presence of HIV-1 by Gag-p24 antigen ELISA.

Evaluation of HIV genomic RNA delivery to cells by qRT-PCR. Each experiment consisted of 3 samples of virus-exposed cultures and one background sample of cultures not exposed to the virus. All samples were tested in duplicate. Virus-exposure was performed either in the presence of whole Ci extract (Ci) or Ci polyphenol fraction (CiPP) or without Ci extract to assess maximum virus RNA delivery. LC5-CD4 cells were seeded in 6-well plates (4 × 10⁵ cells per well), incubated for 24 hours and HIV-1_{LAI} (10 pg Gag-p24/cell) added, either together with (100 µg/ml) or without Ci extract. All cultures also contained 50 nM Efavirenz (obtained through the NIH AIDS Research and Reference Reagent Program, Division of AIDS, NIAID, NIH), to prevent reverse transcription of delivered viral RNA.

Four hours after virus addition, the cells were extensively washed, harvested and RNA was isolated using the RNeasy-kit (Quiagen, Netherlands) according to the manufacturer's instructions. HIV-1 RNA levels were quantified relative to transcript levels of the RNA polymerase II (RPII) housekeeping gene by qPCR. For this purpose, cDNA was generated from RNA by reverse transcription with random hexamers, using the Superscript® III First-Strand Synthesis System (Life Technologies, USA) according to the manufacturer's protocol. qPCR was performed with FastStart DNA Master SYBR Green I-Kit, the Roche Light Cycler 1.5 instrument and LightCycler 480 Software, Version 1.5 (standard LightCycler protocol). The following primers were used for amplification of HIV-1 sequences: HIV-forward primer 5'-CCA GTC ACA CCT CAG GTA CCT TTA AGA CC-3' and HIV -reverse primer 5'-GTG TGT GGT AGA TCC ACA GAT CAA GG-3'. RPII sequences were amplified with the following primers RPIIs 5'-GCA CCA CGT CCA ATG ACA-3' and RPIIs 5'-GTG CGG CTG CTT CCA TAA-3'. The data was analysed with the second derivative maximum method and relative expression ratios were calculated by the 2^{-ΔΔCT} method⁷⁴, with ΔCT representing [CT (HIV target) - CT (RPII reference)]. ΔΔCT signifies ΔCT virus-exposed samples minus ΔCT of background samples (no virus).

Resistance Assay. HIV-1_{LAI} was passaged 48 times (24 weeks) in LC5-RIC cells with or without Ci extract in 6-well plates. For each passage, cells were exposed to virus in the presence of Ci extract for 24 hours of infection. The medium was then exchanged for fresh medium and cultures were incubated for 48 to 72 hours for virus production. Culture supernatants were collected and 500 μ l used as inoculum for the next virus passage. Treatment with Ci extract was performed with 8.06 μ g/ml or 15.5 μ g/ml Ci extract, corresponding to EC₅₀ and EC₉₀, respectively (determined with initial HIV-1 inoculum). Passaging was performed in parallel in the absence of Ci extract as control.

Every second passage, sensitivity of virus to inhibition by Ci extract was determined by standard infection assays, using 5 μ l of culture supernatants and concentrations of Ci extract ranging from 100 to 3,125 μ g/ml to determine EC₅₀ values.

Cell viability assay. Compound effects on cell viability were monitored by MTT (3-(4,5-dimethylthiazol-2-yl)-2,5-diphenyl tetrazolium bromide) assay, which measures the reduction of yellow MTT to purple formazan by mitochondrial enzymes⁷³. The MTT assay was performed as described in Kremb *et al.*²⁹.

Statistical analysis. EC₅₀/CC₅₀ values were calculated with GraphPad Prism v5, using the equation for sigmoidal dose-response with variable slope and constraints set to 100 for top and 0 for bottom.

References

1. WHO. *The top 10 leading causes of death in the world 2000 and 2012*. Available at: <http://www.who.int/mediacentre/factsheets/fs310/en/> (Accessed: 21st October 2015).
2. NEJM. *Ebola Virus Disease: Current Knowledge*. Available at: http://www.nejm.org/action/showMediaPlayer?doi=10.1056/NEJMp1410741&aid=NEJMp1410741_attach_1 (Accessed: 21st October 2015).
3. AIDSinfo. *FDA-Approved HIV Medicines*. Available at: <https://aidsinfo.nih.gov/education-materials/fact-sheets/21/58/fda-approved-hiv-medicines> (Accessed: 21st October 2015).
4. Taiwo, B., Hicks, C. & Eron, J. Unmet therapeutic needs in the new era of combination antiretroviral therapy for HIV-1. *Journal of Antimicrobial Chemotherapy* (2010).
5. Vella, S., Schwartländer, B., Sow, S. P., Eholie, S. P. & Murphy, R. L. The history of antiretroviral therapy and of its implementation in resource-limited areas of the world. *Aids* **26**, 1231–1241 (2012).
6. Tan, I. L. & McArthur, J. C. HIV-Associated neurological disorders. *CNS drugs* **26**, 123–134 (2012).
7. Tang, M. W. & Shafer, R. W. HIV-1 Antiretroviral Resistance. *Drugs* **72**, e1–e25 (2012).
8. Cragg, G. M. & Newman, D. J. Natural products: a continuing source of novel drug leads. *Biochimica et Biophysica Acta (BBA)-General Subjects* **1830**, 3670–3695 (2013).
9. Cowan, M. M. Plant products as antimicrobial agents. *Clinical microbiology reviews* **12**, 564–582 (1999).
10. Farnsworth, N. R., Akerele, O., Bingel, A. S., Soejarto, D. D. & Guo, Z. Medicinal plants in therapy. *Bulletin of the world health organization* **63**, 965 (1985).
11. Miller, L. H. & Su, X. Artemisinin: discovery from the Chinese herbal garden. *Cell* **146**, 855–858 (2011).
12. Nobelprize. *Press Release for the 2015 Nobel Prize in Medicine Laureates*. Available at: http://www.nobelprize.org/nobel_prizes/medicine/laureates/2015/press.html (Accessed: 21st October 2015).
13. Mukhtar, M. *et al.* Antiviral potentials of medicinal plants. *Virus research* **131**, 111–120 (2008).
14. Cordell, G. A. & Colvard, M. D. Natural products and traditional medicine: turning on a paradigm. *Journal of natural products* **75**, 514–525 (2012).
15. Helfer, M. *et al.* The root extract of the medicinal plant *Pelargonium sidoides* is a potent HIV-1 attachment inhibitor. *PLoS ONE* **9**(1), e87487 (2014).
16. Chinou, I., Demetzos, C., Harvala, C., Roussakis, C. & Verbist, J. Cytotoxic and antibacterial labdane-type diterpenes from the aerial parts of *Cistus incanus* subsp. *creticus*. *Planta medica* **60**, 34–36 (1994).
17. Bouamama, H., Villard, J., Benharref, A. & Jana, M. Antibacterial and antifungal activities of *Cistus incanus* and *C. monspeliensis* leaf extracts. *Thérapie* **54**, 731–733 (1998).
18. Riehle, P., Vollmer, M. & Rohn, S. Phenolic compounds in *Cistus incanus* herbal infusions—antioxidant capacity and thermal stability during the brewing process. *Food Research International* **53**, 891–899 (2013).
19. Wittpahl, G. *et al.* The polyphenolic composition of *Cistus incanus* herbal tea and its antibacterial and anti-adherent activity against *Streptococcus mutans*. *Planta medica* (2015).
20. Petereit, F., Kolodziej, H. & Nahrstedt, A. Flavan-3-ols and proanthocyanidins from *Cistus incanus*. *Phytochemistry* **30**, 981–985 (1991).
21. Droebner, K., Ehrhardt, C., Poetter, A., Ludwig, S. & Planz, O. CYSTUS052, a polyphenol-rich plant extract, exerts anti-influenza virus activity in mice. *Antiviral research* **76**, 1–10 (2007).
22. Riehle, P., Rusche, N., Saake, B. & Rohn, S. Influence of the leaf content and herbal particle size on the presence and extractability of quantitated phenolic compounds in *Cistus incanus* herbal teas. *Journal of agricultural and food chemistry* **62**, 10978–10988 (2014).
23. Barrajón-Catalán, E. *et al.* A systematic study of the polyphenolic composition of aqueous extracts deriving from several *Cistus* genus species: evolutionary relationship. *Phytochemical Analysis* **22**, 303–312 (2011).
24. Daglia, M. Polyphenols as antimicrobial agents. *Current opinion in biotechnology* **23**, 174–181 (2012).
25. Andrae-Marobela, K., Ghislain, F. W., Okatch, H. & Majinda, R. R. Polyphenols: a diverse class of multi-target anti-HIV-1 agents. *Current drug metabolism* **14**, 392–413 (2013).
26. Ehrhardt, C. *et al.* A polyphenol rich plant extract, CYSTUS052, exerts anti influenza virus activity in cell culture without toxic side effects or the tendency to induce viral resistance. *Antiviral research* **76**, 38–47 (2007).
27. Kalus, U., Kiesewetter, H. & Radtke, H. Effect of CYSTUS052[®] and green tea on subjective symptoms in patients with infection of the upper respiratory tract. *Phytotherapy research* **24**, 96–100 (2010).
28. Kalus, U. *et al.* *Cistus incanus* (CYSTUS052) for treating patients with infection of the upper respiratory tract: a prospective, randomised, placebo-controlled clinical study. *Antiviral research* **84**, 267–271 (2009).
29. Kremb, S. *et al.* EASY-HIT: HIV full-replication technology for broad discovery of multiple classes of HIV inhibitors. *Antimicrobial agents and chemotherapy* **54**, 5257–5268 (2010).
30. HIV-GRADE. *HIV Sequence analysis for Research*. Available at: <http://www.hiv-grade.de/grade/deployed/rade.pl?program=hivalg> (Accessed: 21st October 2015).
31. Daelemans, D., Pauwels, R., De Clercq, E. & Pannecouque, C. A time-of-drug addition approach to target identification of antiviral compounds. *Nature protocols* **6**, 925–933 (2011).
32. Koppensteiner, H., Banning, C., Schneider, C., Hohenberg, H. & Schindler, M. Macrophage internal HIV-1 is protected from neutralizing antibodies. *Journal of virology* **86**, 2826–2836 (2012).

33. Connell, B. J. & Lortat-Jacob, H. Human immunodeficiency virus and heparan sulfate: from attachment to entry inhibition. *Frontiers in immunology* **4**(385), 2 (2013).
34. Ott, D. E. Cellular proteins in HIV virions. *Reviews in medical virology* **7**, 167–180 (1997).
35. Helleboid, S. *et al.* The identification of naturally occurring neoruscogenin as a bioavailable, potent, and high-affinity agonist of the nuclear receptor ROR α (NR1F1). *Journal of biomolecular screening* **19**(3), 399–406 (2013).
36. Kühl, A. *et al.* The Ebola virus glycoprotein and HIV-1 Vpu employ different strategies to counteract the antiviral factor tetherin. *Journal of Infectious Diseases* **204**, 850–860 (2011).
37. Gnirß, K. *et al.* Analysis of determinants in filovirus glycoproteins required for tetherin antagonism. *Viruses* **6**, 1654–1671 (2014).
38. Chattopadhyay, D. & Khan, M. T. H. Ethnomedicines and ethnomedicinal phytophores against herpesviruses. *Biotechnology annual review* **14**, 297–348 (2008).
39. Kadir, S. L. A., Yaakob, H. & Zulkifli, R. M. Potential anti-dengue medicinal plants: a review. *Journal of natural medicines* **67**, 677–689 (2013).
40. Chen, Y. & Zhu, J. Anti-HBV effect of individual traditional Chinese herbal medicine *in vitro* and *in vivo*: an analytic review. *Journal of viral hepatitis* **20**, 445–452 (2013).
41. Ashfaq, U. A. & Idrees, S. Medicinal plants against hepatitis C virus. *World journal of gastroenterology: WJG* **20**, 2941–2947 (2014).
42. Chingwaru, W., Vidmar, J. & Kapewangolo, P. T. The potential of sub-saharan african plants in the management of human immunodeficiency virus infections: A review. *Phytotherapy Research* **29**, 1452–1487 (2015).
43. Dvorkin-Camiel, L. & Whelan, J. S. Tropical american plants in the treatment of infectious diseases. *Journal of dietary supplements* **5**, 349–372 (2008).
44. Cordell, G. A. Sustainable medicines and global health care. *Planta medica* **77**, 1129–1138 (2011).
45. Li, G. *et al.* An integrated map of HIV genome-wide variation from a population perspective. *Retrovirology* **12** (2015).
46. Peterson, K., Jallow, S., Rowland-Jones, S. L. & de Silva, T. I. Antiretroviral therapy for HIV-2 infection: recommendations for management in low-resource settings. *AIDS research and treatment* **2011** (2011).
47. Bush, S. & Tebit, D. HIV-1 group O origin, evolution, pathogenesis, and treatment: Unraveling the complexity of an outlier 25 years later. *AIDS reviews* **17**, 147–158 (2014).
48. Megens, S. & Laethem, K. V. HIV-1 genetic variation and drug resistance development. *Expert Review of Anti-infective Therapy* **11** (2013).
49. Depatureaux, A. *et al.* HIV-1 group O resistance against integrase inhibitors. *Journal of acquired immune deficiency syndromes* **70**, 9–15 (2015).
50. Wolf, M. C. *et al.* A broad-spectrum antiviral targeting entry of enveloped viruses. *Proceedings of the National Academy of Sciences* **107**, 3157–3162 (2010).
51. Haqqani, A. A. & Tilton, J. C. Entry inhibitors and their use in the treatment of HIV-1 infection. *Antiviral research* **98**, 158–170 (2013).
52. Nyakatura, E. K., Frei, J. C. & Lai, J. R. Chemical and structural aspects of Ebola Virus entry inhibitors. *ACS infectious diseases* **1**, 42–52 (2014).
53. Spillmann, D. Heparan sulfate: anchor for viral intruders? *Biochimie* **83**, 811–817 (2001).
54. Salvador, B. *et al.* Filoviruses utilize glycosaminoglycans for their attachment to target cells. *Journal of virology* **87**, 3295–3304 (2013).
55. Schulze, A., Gripon, P. & Urban, S. Hepatitis B virus infection initiates with a large surface protein-dependent binding to heparan sulfate proteoglycans. *Hepatology* **46**, 1759–1768 (2007).
56. Barth, H. *et al.* Cellular binding of hepatitis C virus envelope glycoprotein E2 requires cell surface heparan sulfate. *Journal of Biological Chemistry* **278**, 41003–41012 (2003).
57. Colpitts, C. C. & Schang, L. M. A small molecule inhibits virion attachment to heparan sulfate-or sialic acid-containing glycans. *Journal of virology* **88**, 7806–7817 (2014).
58. Wilen, C. B., Tilton, J. C. & Doms, R. W. Molecular mechanisms of HIV entry in *Viral Molecular Machines* 223–242 (Springer, 2012).
59. Yuan, S. *et al.* A Wnt5a signaling pathway in the pathogenesis of HIV-1 gp120-induced pain. *Pain* **156**, 1311–1319 (2015).
60. Alexander, L. *et al.* Inhibition of envelope-mediated CD4+ -T-cell depletion by human immunodeficiency virus attachment inhibitors. *Antimicrobial agents and chemotherapy* **53**, 4726–4732 (2009).
61. Kaul, M. & Lipton, S. A. Mechanisms of neuroimmunity and neurodegeneration associated with HIV-1 infection and AIDS. *Journal of Neuroimmune Pharmacology* **1**, 138–151 (2006).
62. Mochetti, I., Bachis, A. & Avdoshina, V. Neurotoxicity of human immunodeficiency virus-1: viral proteins and axonal transport. *Neurotoxicity research* **21**, 79–89 (2012).
63. Zhou, N. *et al.* Genotypic correlates of susceptibility to HIV-1 attachment inhibitor BMS-626529, the active agent of the prodrug BMS-663068. *Journal of Antimicrobial Chemotherapy* **69**, 573–581 (2014).
64. Baeten, J. & Celum, C. Systemic and topical drugs for the prevention of HIV infection: antiretroviral pre-exposure prophylaxis. *Annual review of medicine* **64**, 219–232 (2013).
65. Harvey, A. L., Edrada-Ebel, R. & Quinn, R. J. The re-emergence of natural products for drug discovery in the genomics era. *Nature Reviews Drug Discovery* **14**, 111–129 (2015).
66. Newman, D. J. & Cragg, G. M. Natural products as sources of new drugs over the 30 years from 1981 to 2010. *Journal of natural products* **75**, 311–335 (2012).
67. Martinez, J., Sasse, F., Brönstrup, M., Diez, J. & Meyerhans, A. Antiviral drug discovery: broad-spectrum drugs from nature. *Natural product reports* **32**, 29–48 (2015).
68. Peden, K., Emerman, M. & Montagnier, L. Changes in growth properties on passage in tissue culture of viruses derived from infectious molecular clones of HIV-1 LAI, HIV-1 MAL, and HIV-1 ELI. *Virology* **185**, 661–672 (1991).
69. Freed, E. O., Englund, G. & Martin, M. A. Role of the basic domain of human immunodeficiency virus type 1 matrix in macrophage infection. *Journal of virology* **69**, 3949–3954 (1995).
70. Gürtler, L. G. *et al.* A new subtype of human immunodeficiency virus type 1 (MVP-5180) from Cameroon. *Journal of virology* **68**, 1581–1585 (1994).
71. Gaudin, R. *et al.* Critical role for the kinesin KIF3A in the HIV life cycle in primary human macrophages. *The Journal of cell biology* **199**, 467–479 (2012).
72. Wachinger, M. *et al.* Antimicrobial peptides melittin and cecropin inhibit replication of human immunodeficiency virus 1 by suppressing viral gene expression. *Journal of General Virology* **79**, 731–740 (1998).
73. Fuss, I. J., Kanof, M. E., Smith, P. D. & Zola, H. Isolation of whole mononuclear cells from peripheral blood and cord blood. *Current protocols in immunology*. 7.1.1–7.1.8 (2009).
74. Livak, K. J. & Schmittgen, T. D. Analysis of relative gene expression data using real-time quantitative PCR and the 2 $^{-\Delta\Delta CT}$ method. *Methods* **25**, 402–408 (2001).
75. Mosmann, T. Rapid colorimetric assay for cellular growth and survival: application to proliferation and cytotoxicity assays. *Journal of immunological methods* **65**, 55–63 (1983).

Acknowledgements

We thank Stefan Pöhlmann, German Primate Center, Göttingen for providing the plasmids pCAGGS-ZEBOV-V5 und pCAGGS-MARV-V5 with the kind permission of Stephan Becker, Institute of Virology, Phillips-Universität Marburg. We are grateful to Ulrike Protzer, Technical University Munich and Helmholtz Zentrum München, Institute of Virology, for continuous support and encouragement. We thank Ingrid Hülsmeier and Johanna Götz, Helmholtz Zentrum München, Institute of Virology, for expert technical assistance.

Author Contributions

S.R., M.H., R.B.W., H.K., M. Schneider and M. Schindler conceived and designed the experiments. S.R. and M.H. performed the experiments. S.R., M.H., M. Schneider and H.K. evaluated experimental data. L.G. and J.E. were responsible for primary isolation of clinical HIV-1 isolates and their characterization. S.R. wrote the first draft of the paper and R.B.W., M. Schneider, M. Schindler and L.G. made major revisions. R.B.W. was responsible for finalizing the manuscript. All authors reviewed the manuscript.

Additional Information

Supplementary information accompanies this paper at <http://www.nature.com/srep>

Competing financial interests: The authors declare no competing financial interests.

How to cite this article: Rebensburg, S. *et al.* Potent *in vitro* antiviral activity of *Cistus incanus* extract against HIV and Filoviruses targets viral envelope proteins. *Sci. Rep.* **6**, 20394; doi: 10.1038/srep20394 (2016).



This work is licensed under a Creative Commons Attribution 4.0 International License. The images or other third party material in this article are included in the article's Creative Commons license, unless indicated otherwise in the credit line; if the material is not included under the Creative Commons license, users will need to obtain permission from the license holder to reproduce the material. To view a copy of this license, visit <http://creativecommons.org/licenses/by/4.0/>