

Organic contamination versus mineral properties: competing selective forces shaping bacterial community assembly in aquifer sediments

Michael Grösbacher, Carolin Spicher, Anne Bayer, Martin Obst, Clemens Karwautz, Giovanni Pilloni, Martin Wachsmann, Hagen Scherb, Christian Griebler*

*Corresponding author: griebler@helmholtz-muenchen.de

Aquatic Microbial Ecology 76: 243–255 (2016)

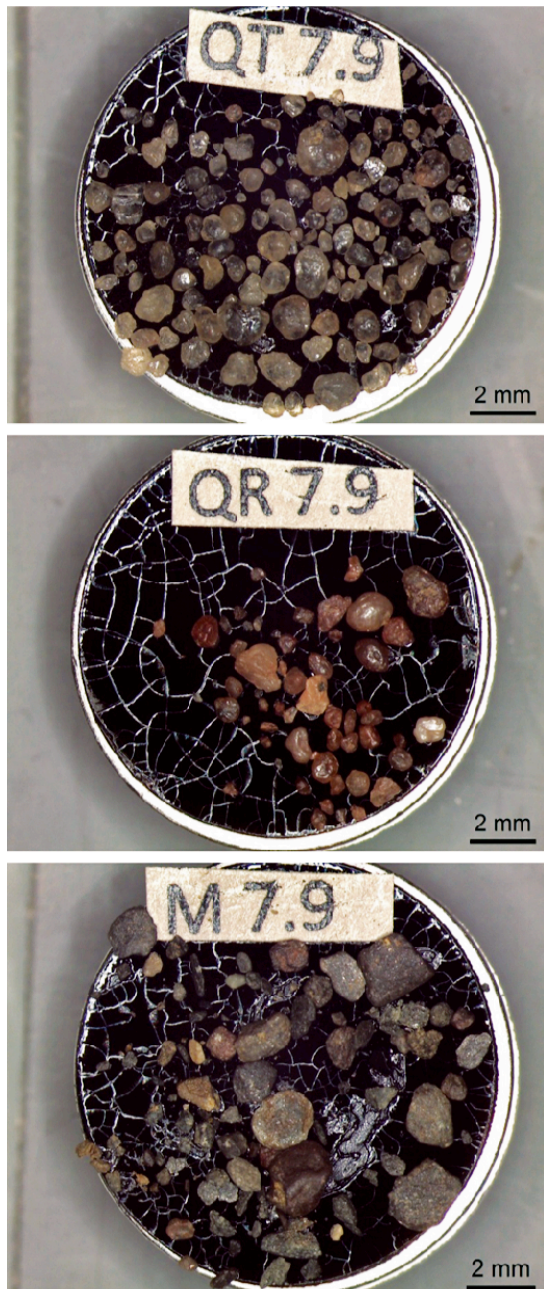


Fig S1. Sorted grains from Zone 2 dedicated to SEM-EDX analysis. QT = translucent quartz; QR = remaining sediment fraction mainly composed of ‘coated quartz’; M = mica.

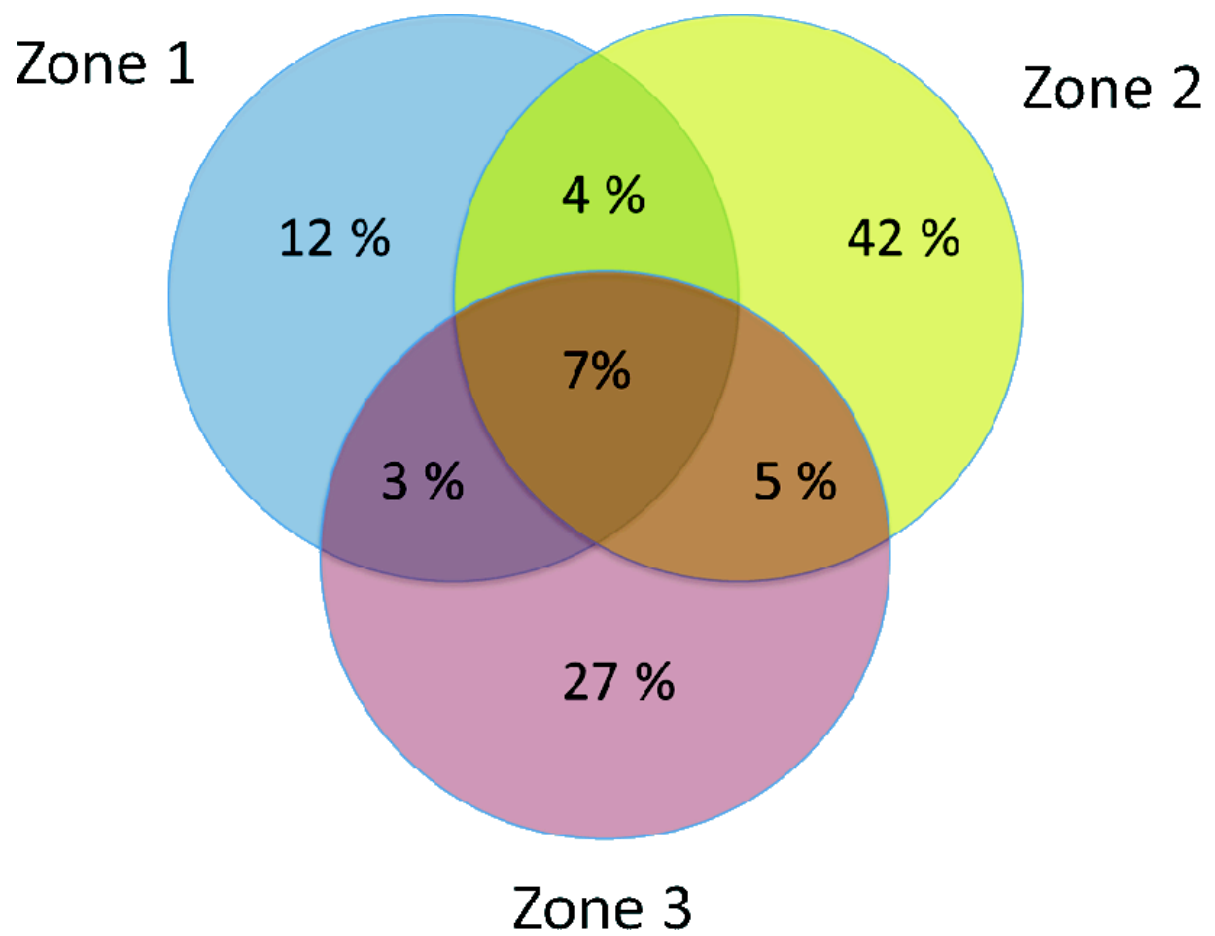


Fig S2. Venn diagram with the percentage of operational taxonomic units (TRFs) shared by the individual zones of the aquifer investigated.

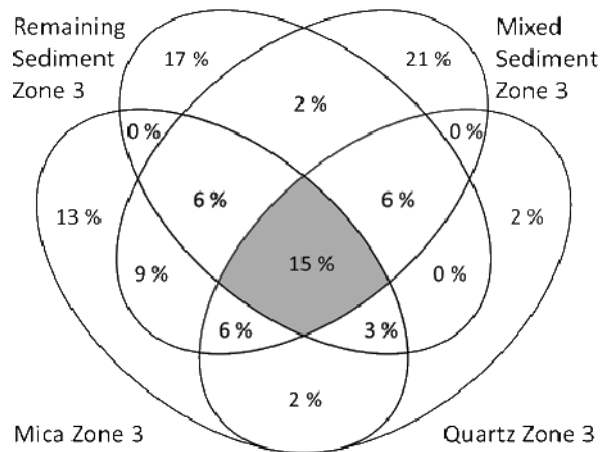
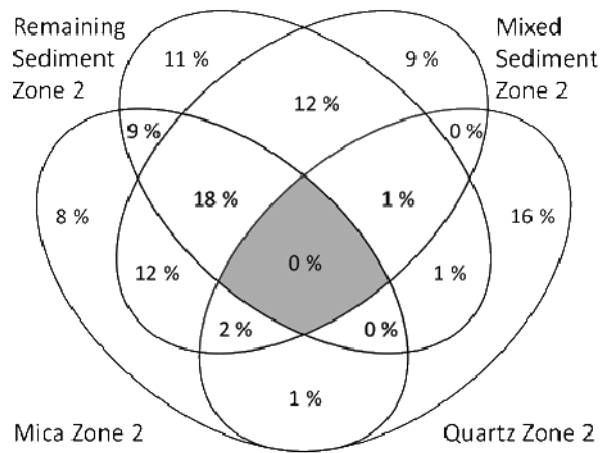
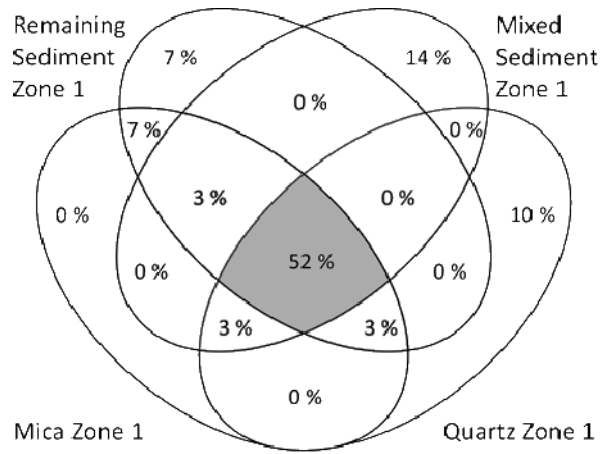


Fig S3. Venn diagrams with the percentage of operational taxonomic units (TRFs) shared by the individual mineral fractions selected in the three zones of the aquifer investigated.

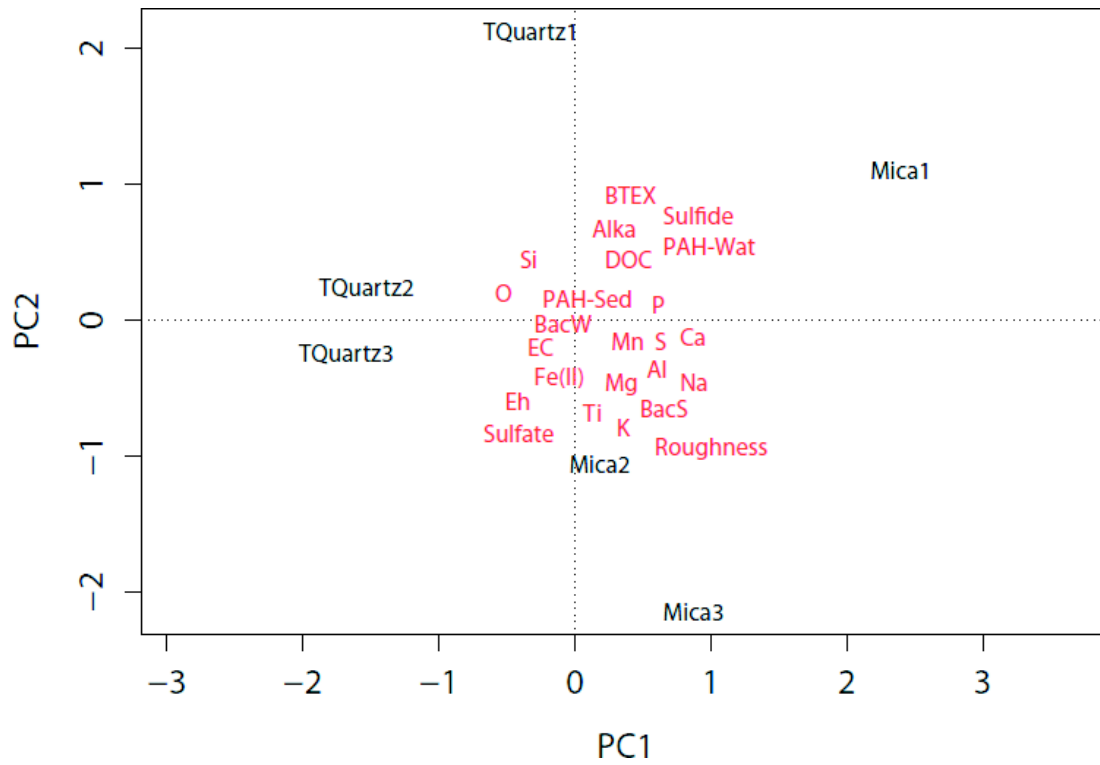


Fig S4. PCA plot that separates the individual samples (different zones and the mineral fractions translucent quartz and mica) according to the influence of environmental variables (z-scores).