

## CLINICAL TRIALS AND OBSERVATIONS

Heterozygous *STAT1* gain-of-function mutations underlie an unexpectedly broad clinical phenotype

Julie Toubiana,<sup>1-4</sup> Satoshi Okada,<sup>5,6</sup> Julia Hiller,<sup>7,8,\*</sup> Matias Oleastro,<sup>9,\*</sup> Macarena Lagos Gomez,<sup>10,\*</sup> Juan Carlos Aldave Becerra,<sup>11,\*</sup> Marie Ouachée-Chardin,<sup>12,\*</sup> Fanny Fouyssac,<sup>13,\*</sup> Katta Mohan Girisha,<sup>14,†</sup> Amos Etzioni,<sup>15,†</sup> Joris Van Montfrans,<sup>16,†</sup> Yildiz Camcioglu,<sup>17,†</sup> Leigh Ann Kerns,<sup>18,†</sup> Bernd Belohradsky,<sup>19,†</sup> Stéphane Blanche,<sup>2,4,†</sup> Aziz Bousfiha,<sup>20,†</sup> Carlos Rodriguez-Gallego,<sup>21,†</sup> Isabelle Meyts,<sup>22,†</sup> Kai Kisand,<sup>23,†</sup> Janine Reichenbach,<sup>24,†</sup> Ellen D. Renner,<sup>19,‡</sup> Sergio Rosenzweig,<sup>25,‡</sup> Bodo Grimbacher,<sup>26,‡</sup> Frank L. van de Veerdonk,<sup>27,‡</sup> Claudia Traidl-Hoffmann,<sup>7,8,‡</sup> Capucine Picard,<sup>2-4,28,‡</sup> Laszlo Marodi,<sup>29,‡</sup> Tomohiro Morio,<sup>30,‡</sup> Masao Kobayashi,<sup>6,‡</sup> Desa Lilic,<sup>31,‡</sup> Joshua D. Milner,<sup>32,‡</sup> Steven Holland,<sup>25,‡</sup> Jean-Laurent Casanova,<sup>2,3,5,33,§</sup> and Anne Puel<sup>2,3,5,34,§</sup>, on behalf of the International *STAT1* Gain-of-Function Study Group

<sup>1</sup>Department of General Pediatrics and Pediatric Infectious Diseases, Assistance Publique-Hôpitaux de Paris (AP-HP), Necker-Enfants Malades Hospital, Paris, France; <sup>2</sup>Paris Descartes University, Sorbonne Paris Cité, Institut Imagine, Paris, France; <sup>3</sup>Laboratory of Human Genetics of Infectious Diseases, Necker Branch, INSERM UMR1163, Necker Medical School, Paris, France; <sup>4</sup>Pediatric Hematology-Immunology-Rheumatology Unit, AP-HP, Necker-Enfants Malades Hospital, Paris, France; <sup>5</sup>St. Giles Laboratory of Human Genetics of Infectious Diseases, Rockefeller Branch, Rockefeller University, New York, NY; <sup>6</sup>Department of Pediatrics, Hiroshima University Graduate School of Biomedical & Health Sciences, Hiroshima, Japan; <sup>7</sup>Institute of Environmental Medicine, UNIKA-T, Technical University and Helmholtz Center Munich, Augsburg, Germany; <sup>8</sup>Christine Kühne-Center for Allergy Research and Education (CK-CARE), Davos, Switzerland; <sup>9</sup>Immunology and Rheumatology Department, Juan Pedro Garrahan National Hospital of Pediatrics, Buenos Aires, Argentina; <sup>10</sup>Department of Preclinics, School of Medicine, Valparaíso University and Department of Pediatrics, Padre Hurtado-Clinica Alemana de Santiago Hospital, Valparaíso, Chile; <sup>11</sup>Allergy and Immunology Division, Edgardo Rebagliati Martins National Hospital, Lima, Peru; <sup>12</sup>Pediatric Hematology-Oncology Unit, AP-HP, Robert Debré Hospital, Paris, France; <sup>13</sup>Pediatric Oncology and Hematology Unit, Children Hospital, Vandoeuvre-Nancy, France; <sup>14</sup>Department of Medical Genetics, Kasturba Medical College, Manipal University, Manipal, India; <sup>15</sup>Meyer Children's Hospital, Haifa, Israel; <sup>16</sup>Department of Pediatric Immunology, Hematology and Infectious Diseases, Utrecht University Medical Center, Utrecht, The Netherlands; <sup>17</sup>Department of Pediatrics, Infectious Disease, Clinical Immunology and Allergy Division, Cerrahpasa Medical School, Istanbul University, Istanbul, Turkey; <sup>18</sup>Division of Pediatric Pulmonology, Allergy, Immunology, and Sleep Medicine, Rainbow Babies and Children's Hospital, Case Medical Center, Cleveland, OH; <sup>19</sup>Dr. von Hauner Children's Hospital, Ludwig Maximilian University, Munich, Germany; <sup>20</sup>Clinical Immunology Unit, Department of Pediatric Infectious Diseases, Ibn Rochd Hospital, King Hassan II University, Casablanca, Morocco; <sup>21</sup>Department of Immunology, Son Espases University Hospital, Palma de Mallorca, Spain; <sup>22</sup>Department of Pediatrics, Leuven University Hospitals, Leuven, Belgium; <sup>23</sup>Institute of Biomedicine and Translational Medicine, University of Tartu, Tartu, Estonia; <sup>24</sup>Division of Immunology, University Children's Hospital and Children's Research Centre, University of Zurich, Zurich, Switzerland; <sup>25</sup>Laboratory of Clinical Infectious Diseases, National Institute of Allergy and Infectious Diseases, National Institutes of Health, Bethesda, MD; <sup>26</sup>Center for Chronic Immunodeficiency, Freiburg University Medical Center and University of Freiburg, Freiburg, Germany; <sup>27</sup>Department of Internal Medicine, Radboud University Medical Center, Radboud Center for Infectious Diseases, Nijmegen, The Netherlands; <sup>28</sup>Study Center for Immunodeficiencies, Necker-Enfants Malades Hospital, AP-HP, Paris, France; <sup>29</sup>Department of Infectious Diseases and Pediatric Immunology, Faculty of Medicine, University of Debrecen, Debrecen, Hungary; <sup>30</sup>Department of Pediatrics and Developmental Biology, Tokyo Medical and Dental University, Tokyo, Japan; <sup>31</sup>Primary Immunodeficiency Group, Institute of Cellular Medicine, Newcastle University, Newcastle, United Kingdom; <sup>32</sup>Laboratory of Allergic Diseases, National Institute of Allergy and Infectious Diseases, National Institutes of Health, Bethesda, MD; <sup>33</sup>Howard Hughes Medical Institute, New York, NY; and <sup>34</sup>Department of Infectious and Tropical Diseases, Necker-Enfants Malades Hospital, AP-HP, Paris, France

## Key Points

- AD *STAT1* GOF is the most common genetic cause of inherited CMC and is not restricted to a specific age or ethnic group.
- *STAT1* GOF underlies a variety of infectious and autoimmune features, as well as carcinomas and aneurysms associated with a poor outcome.

Submitted November 19, 2015; accepted April 1, 2016. Prepublished online as *Blood* First Edition paper, April 25, 2016; DOI 10.1182/blood-2015-11-679902.

\*J.H., M.O., M.L.G., J.C.A.B., M.O.-C., and F.F. contributed equally to this study.

†K.M.G., A.E., J.V.M., Y.C., L.A.K., B.B., S.B., A.B., C.R.-G., I.M., K.K., and J.R. contributed equally to this study.

‡E.D.R., S.R., B.G., F.L.v.d.V., C.T.-H., C.P., L.M., T.M., M.K., D.L., J.D.M., and S.H. contributed equally to this study.

§J.-L.C. and A.P. contributed equally to this study.

The online version of this article contains a data supplement.

There is an Inside *Blood* Commentary on this article in this issue.

The publication costs of this article were defrayed in part by page charge payment. Therefore, and solely to indicate this fact, this article is hereby marked "advertisement" in accordance with 18 USC section 1734.

Since their discovery in patients with autosomal dominant (AD) chronic mucocutaneous candidiasis (CMC) in 2011, heterozygous *STAT1* gain-of-function (GOF) mutations have increasingly been identified worldwide. The clinical spectrum associated with them needed to be delineated. We enrolled 274 patients from 167 kindreds originating from 40 countries from 5 continents. Demographic data, clinical features, immunological parameters, treatment, and outcome were recorded. The median age of the 274 patients was 22 years (range, 1-71 years); 98% of them had CMC, with a median age at onset of 1 year (range, 0-24 years). Patients often displayed bacterial (74%) infections, mostly because of *Staphylococcus aureus* (36%), including the respiratory tract and the skin in 47% and 28% of patients, respectively, and viral (38%) infections, mostly because of *Herpesviridae* (83%) and affecting the skin in 32% of patients. Invasive fungal infections (10%), mostly caused by *Candida* spp. (29%), and mycobacterial disease (6%) caused by *Mycobacterium tuberculosis*, environmental mycobacteria, or Bacille Calmette-Guérin vaccines were less common. Many patients had autoimmune manifestations (37%), including hypothyroidism (22%), type 1 diabetes (4%), blood cytopenia (4%), and systemic lupus erythematosus (2%). Invasive infections (25%), cerebral aneurysms (6%), and cancers (6%) were the strongest predictors of poor outcome. CMC persisted in 39% of the 202 patients receiving prolonged antifungal treatment. Circulating interleukin-17A-producing T-cell count was low for most (82%) but not all of the patients tested. *STAT1* GOF mutations underlie AD CMC, as well as an unexpectedly wide range of other clinical features, including not only a variety of infectious and autoimmune diseases, but also cerebral aneurysms and carcinomas that confer a poor prognosis. (*Blood*. 2016;127(25):3154-3164)

## Introduction

Chronic mucocutaneous candidiasis (CMC), characterized by persistent or recurrent infections of the nails, skin, oral or genital mucosae with *Candida* spp., mainly *C. albicans*, may result from primary immunodeficiencies (PIDs).<sup>1</sup> In patients with T-cell deficiencies, CMC is associated with various infections and autoimmune diseases.<sup>1</sup> CMC is one of the most common infections in patients with autosomal dominant (AD) hyper-immunoglobulin E (IgE) syndrome (AD-HIES)<sup>2</sup> and the only infectious complication reported in patients with autosomal recessive (AR) autoimmune polyendocrine syndrome type I (APS-I).<sup>3</sup> By contrast, since the late 1960s, patients have been reported who display an apparently inherited form of isolated CMC and no distinctive associated clinical or immunological phenotype (CMC disease, CMCD).<sup>1</sup> However, invasive candidiasis, peripheral dermatophytosis, bacterial infections of the skin, and respiratory tract have occasionally been reported in some CMCD patients.<sup>1,4</sup> Autoimmune diseases, typically affecting the thyroid, have also been described in these patients.<sup>1</sup> CMCD can be life-threatening as it is associated with an unexplained increase in the risk for squamous cell carcinoma<sup>1,5</sup> and cerebral aneurysm.<sup>1,6</sup> A number of the CMCD cases reported belonged to multiplex and/or consanguineous families suggestive of AD and AR inheritances.<sup>1</sup>

The pathogenesis of CMC, first studied in PIDs with syndromic CMC, strongly suggested a role for interleukin 17A (IL-17A), IL-17F, and IL-22 in mucocutaneous immunity to *C. albicans*.<sup>1</sup> Patients with AD HIES, heterozygous for *STAT3* loss-of-function (LOF) mutations, have low proportions of IL-17A, IL-17F, and IL-22-producing T cells ex vivo and in vitro.<sup>7-9</sup> Patients with AR APS-1 and biallelic LOF mutations of *AIRE*<sup>10</sup> have high plasma titers of neutralizing autoantibodies against IL-17A, IL-17F, and IL-22.<sup>11,12</sup> Low proportions of circulating IL-17A, IL-17F, and IL-22-producing T cells have also been found in some patients with Mendelian susceptibility to mycobacterial disease and AR IL-12 receptor  $\beta$ 1 or IL-12p40 deficiency, who may also develop CMC.<sup>8,13</sup> Patients with AR caspase recruitment domain-containing protein 9 (CARD9) deficiency and various invasive fungal diseases occasionally display CMC and low IL-17A producing T-cell counts.<sup>4,14,15</sup> These findings paved the way for the candidate gene-based discovery of AR IL-17 receptor A (IL-17RA), AR IL-17RC, AR ACT1, and AD IL-17F deficiencies in some patients with inherited CMCD.<sup>1,16-18</sup> However, the genetic etiology of CMCD remained unknown for most patients, including those with low proportions of circulating IL-17A and IL-17F T cells.<sup>19</sup>

Genome-wide strategies have identified heterozygous *STAT1* gain-of-function (GOF) mutations<sup>20,21</sup> as the underlying cause in about half of CMCD patients (depending on the centers). Among the 400 CMCD patients studied in the laboratory of the corresponding

author (Necker and Rockefeller branches), approximately half of them carry *STAT1* GOF mutations (A. Puel, unpublished data). These mutations affect the coiled-coil domain or DNA-binding domain of STAT1. They increase STAT1 phosphorylation by impairing nuclear dephosphorylation and are GOF for the STAT1-dependent cytokines interferon  $\alpha/\beta$  (IFN- $\alpha/\beta$ ), IFN- $\gamma$ , and IL-27, and STAT3-dependent IL-6 and IL-21.<sup>20,22-24</sup> Impaired IL-17A- and/or IL-17F-producing T-cell development accounts, at least in part, for CMCD, but the underlying mechanisms remain elusive. Since 2011, 184 patients from 120 kindreds with *STAT1* GOF mutations have been described.<sup>20,21,23-59</sup>

Most reports have focused on the molecular and cellular defects of 1 or a small series of patients. This provides useful but incomplete clinical information. The comprehensive clinical features and outcomes of patients with *STAT1* GOF mutations remain undefined. We therefore undertook the detailed clinical analysis of an international cohort of 274 patients with genetically and biochemically confirmed *STAT1* GOF mutations. We collected information concerning demographic and clinical features, clinical outcome, preventive and curative treatments, and immunological and hematological investigations.

## Methods

Study design, ethical concerns, definitions and methods for data collection, immunological and genetic analyses, as well as statistical analysis are described in the supplemental Appendix (available on the *Blood* Web site).

## Results

### Genetic and immunological features

We studied 274 patients from 167 kindreds originating from 40 countries on 5 continents, most of whom were from Europe (62%) (supplemental Table 1). Male/female (M/F) ratio was 1.03, and median age of the patients at the time of the study was 22 years (range: 1-71 years). In total, 167 of the 274 cases (61%) were familial (60 kindreds) (supplemental Table 1), and the remaining 107 cases being sporadic (107 kindreds). Three of the sporadic cases had a relevant familial history of disease previously reported to be associated with CMCD (carcinoma, autoimmunity, or aneurysm) that could not be explored genetically. We identified 76 mutations in *STAT1* (supplemental Table 1); the mutation affected the coiled-coil domain in 104 kindreds (62%),

the DNA-binding domain in 58 (35%) kindreds, the transactivation domain in 2 (1%) kindreds, the N-terminal domain in 2 (1%) kindreds, and the SH2 domain in 1 (1%) kindred. All the 76 *STAT1* mutations were tested in vitro and were all found to be GOF in each functional assay tested (at least 1 assay per mutation) (S.O., J.-L.C. and A.P., unpublished data).<sup>20,21,23,30,33,35,43,44,46-48</sup> Blood leukocyte subsets were analyzed in 232 patients (Table 1). Most patients did not display diagnostically relevant functional defects in immune parameters except low memory B cells (49% of the 53 patients tested) as well as low IgG2 (38%) or IgG4 (50%) levels. Abnormal immunological features were significantly associated with lower respiratory tract infections (LRIs) (ie, low CD19<sup>+</sup> [ $P = .02$ ] or CD4<sup>+</sup> [ $P = .005$ ] cell subsets), viral infections (low proportions of CD19<sup>+</sup> [ $P < .001$ ] or CD4<sup>+</sup> [ $P = .009$ ] cell subsets), or mycobacterial infections (low proportions of CD19<sup>+</sup> [ $P = .005$ ], or CD4<sup>+</sup> [ $P = .005$ ] cell subsets, low IgG levels [ $P < .001$ ] without or with weak antibody [Ab] production to protein antigens [ $P < .001$ ]). Regarding Th17 immunity, lower proportions than normal of ex vivo IL-17A-producing T cells and of IL-17A production, measured after 12 hours of stimulation with phorbol 12-myristate 13-acetate (PMA)–ionomycin or *Candida* spp.,<sup>60</sup> were observed in 82% of 49 patients and 40% of 10 patients tested, respectively. Further details regarding genetic and immunological features are described in the supplemental Appendix.

### Fungal infections

CMC was observed in 268 (98%) of the 274 individuals carrying *STAT1* GOF mutations (supplemental Table 2), with a median age at onset of 1 year (range: birth to 24 years) (Figure 1A). None of the 6 patients without CMC (median age 32 years, range: 4–61 years) was totally asymptomatic. One had invasive fungal infection, 5 had invasive bacterial infections, 4 had hypothyroidism, and 1 had a cerebral aneurysm. Three of them had a familial history of CMC. Mucocutaneous fungal infections mostly affected the oral mucosae (93% of patients, thrush, glossitis, and/or cheilitis) (Table 2). Skin (57%, pustules, annular plaques, intertrigo), esophageal/genital (56%), and/or nail (56%, onychia, perionychia) infections were also often reported (Table 2). Recurrent and/or severe aphthous stomatitis occurred in 125 (46%) patients, and candidiasis of the scalp occurred in 55 (20%) patients. *Candida* spp. were isolated from various specimens (skin, nails, throat, genital/esophageal mucosae) (Table 3), and *C albicans* was the species most frequently isolated (95% of the 147 *Candida* isolates). Superficial dermatophytic infections of the scalp, skin or nails were suspected in 44 (16%) patients and were microbiologically confirmed (*Trichophyton* spp., *Microsporon* spp.) in 52% of these patients. Photographs of mucocutaneous fungal infections are found in Figure 2. Twenty-eight (10%) patients developed invasive fungal infections (Table 2). Ten patients suffered from invasive candidiasis, and fungal pneumonia was observed in 17 patients (*Pneumocystis jirovecii* [ $n = 6$ ], *Aspergillus* spp. [ $n = 5$ ], *Cryptococcus* spp. [ $n = 4$ ], and *Histoplasma* spp. [ $n = 2$ ]). Two patients had fungal nephritis (*C curvatus* and *Trichosporon asahii*), 2 patients suffered from cryptococcal meningitis, and 3 patients displayed disseminated fungal disease (*Coccidioides* spp. or *Mucoraceae*) (Table 3). Overall, although most patients had CMC, a substantial number (24%, cumulative) displayed various other superficial (17%) or invasive (10%) fungal diseases.

### Bacterial infections

Bacterial infections were observed in 202 of the 274 patients studied (74%; Table 2; supplemental Table 2). LRIs were reported in 129 patients (47%, Table 1) with often recurrent lobar pneumonia, bronchitis, and/or

**Table 1. Immunological investigations of patients with *STAT1* GOF mutations**

Biological investigations	Patients tested (n)	Normal (%)	Low (%)	High (%)
Total lymphocyte rate	232	81	19	—
CD4 <sup>+</sup> T lymphocytes	222	72	28	—
CD8 <sup>+</sup> T lymphocytes	222	83	16	1
CD19 <sup>+</sup> or CD20 <sup>+</sup> B lymphocytes	209	81	19	—
CD27 <sup>+</sup> CD19 <sup>+</sup> memory B lymphocytes	53	51	49	—
CD16 <sup>+</sup> CD56 <sup>+</sup> NK cells	158	73	25	2
CD3 <sup>+</sup> IL-17 <sup>+</sup> or CD4 <sup>+</sup> IL-17 <sup>+</sup> T lymphocytes*	49	18	82	—
CD4 <sup>+</sup> IFN- $\gamma$ <sup>+</sup> T lymphocytes†	13	69	31	—
T-cell proliferation (mitogen and/or antigen)	119	68	32	—
PBMC IL-17 production (pg/mL)‡	10	60	40	—
IgG levels (g/L)	229	77	3	20§
IgA levels (g/L)	219	82	14	4
IgM levels (g/L)	221	100	—	—
IgG1 levels (g/L)	94	100	—	—
IgG2 levels (g/L)	94	62	38	—
IgG4 levels (g/L)	94	50	50	—
IgE levels (kIU/L)	125	97	—	3
Antibodies against protein antigens¶	111	77	23	—

PBMC, peripheral blood mononuclear cell.

\*CD3<sup>+</sup> IL17<sup>+</sup> lymphocyte normal range (% of CD3<sup>+</sup>): 0.7–1.7; CD4<sup>+</sup> IL17<sup>+</sup> lymphocyte normal range (% of CD4<sup>+</sup>): 6–22.<sup>60</sup>

†CD4<sup>+</sup> IFN- $\gamma$ <sup>+</sup> lymphocytes normal range (%): 6–18.<sup>60</sup>

‡IL-17 (PBMC stimulated with *Candida*) normal range: 900–5000 pg/mL.<sup>60</sup>

§IgG > 15 g/dL.

||IgE > 140 kIU/L.

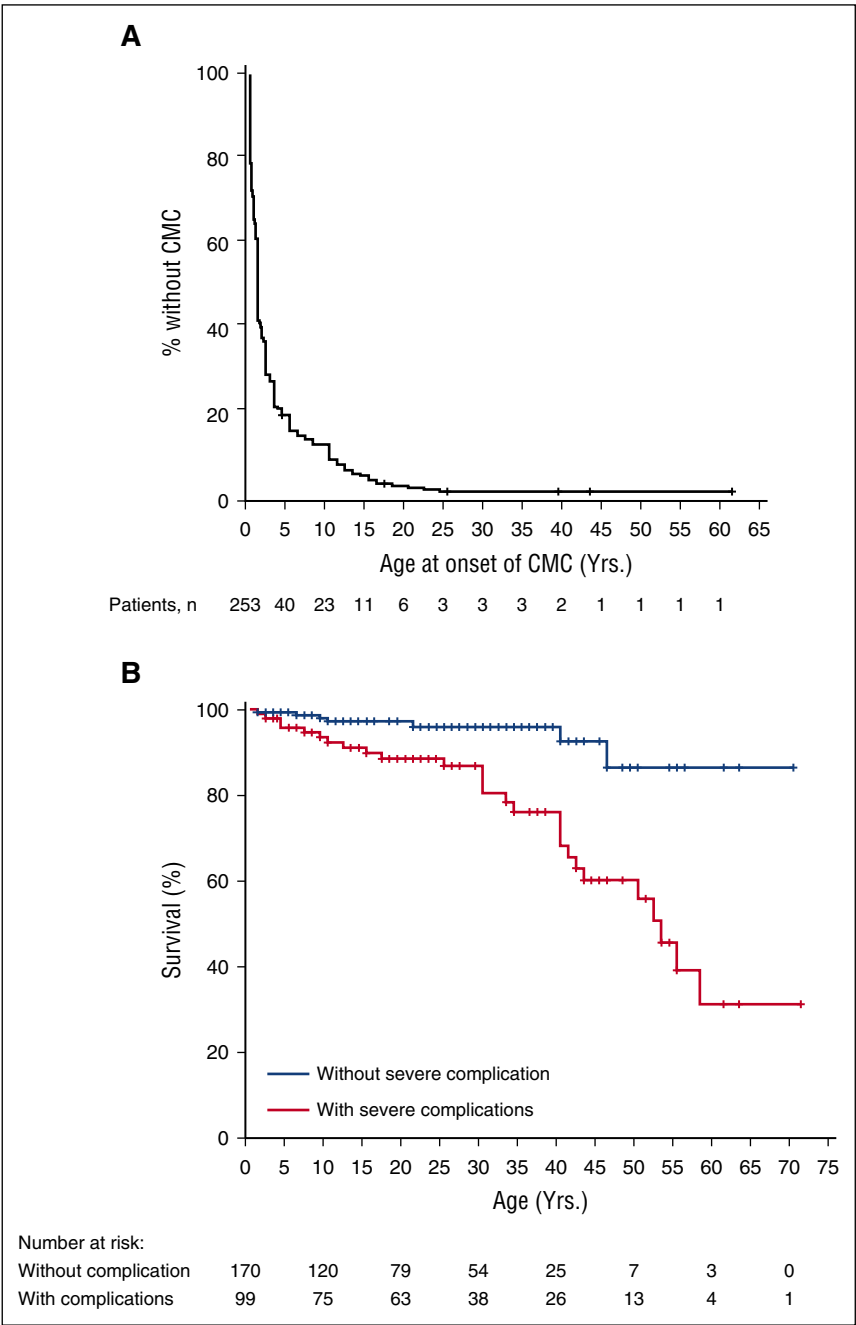
¶Tetanus, diphtheria toxoid, or poliovirus.

interstitial pneumonia. *Streptococcus pneumoniae* ( $n = 13$ ), *Pseudomonas aeruginosa* ( $n = 13$ ), *Haemophilus influenzae* ( $n = 9$ ), and *S aureus* ( $n = 7$ ) were the most frequent pathogens (Table 3). ENT infections were observed in 121 of the 274 patients (44%), mostly as recurrent or chronic sinusitis or otitis media. Recurrent conjunctivitis/keratitis were observed in 39 patients, and 15 patients had blepharitis or ectropion. Recurrent skin infections were found in 77 patients (28%) (Table 2). Folliculitis was the main skin infection, followed by cellulitis, abscesses, and paronychia. The causative agent was documented in 25% of cutaneous infections, with *S aureus* isolated in most cases. Other probable bacterial infections included recurrent pyelonephritis ( $n = 8$ ), severe gastroenteritis ( $n = 8$ ), sepsis ( $n = 7$ ), or bone and joint infections ( $n = 3$ ). Seventeen patients (6%) developed mycobacterial diseases. Lung infections were because of *M tuberculosis* ( $n = 3$ ) or nontuberculous, environmental mycobacteria ( $n = 3$ ). Skin disease and adenitis were caused by Bacille Calmette-Guérin (BCG) vaccine or environmental mycobacteria ( $n = 5$ ), and disseminated disease by BCG ( $n = 2$ ), *M tuberculosis* ( $n = 3$ ), or *M genavense* ( $n = 1$ ) (Table 3). Two thirds of the patients were presumed to be vaccinated with BCG during childhood according to the global BCG vaccination policies.<sup>61</sup>

### Viral infections

One hundred three patients (of 274, 38%) developed at least 1 systemic or atypical viral infection, or recurrent mucocutaneous viral infections (Table 2; supplemental Table 2). Recurrent mucocutaneous viral infections (rash, stomatitis, vulvitis or keratitis) affected 88 patients (32%). The main causal agents were herpes simplex virus and varicella-zoster virus (VZV) (Table 3). Eighteen patients (7%) had severe chickenpox (ie, rash associated with VZV pneumonitis or cutaneous bacterial superinfection), and 33 (12%) had a history of shingles during childhood that was recurrent in 58% of cases. Thirty-two (12%) patients had recurrent molluscum contagiosum or warts. Severe systemic

**Figure 1. Kaplan-Meier curves for onset of CMC and outcome.** (A) Onset of CMC. Exact age at onset of CMC was available for 253 patients. (B) Overall survival curves. Age at the time of the study was available for 269 patients. Patients with severe complications (ie, patients who displayed invasive infections, aneurysms, and/or tumors) were compared with patients without any severe complication (log-rank test,  $P < .001$ ).



infections were reported in 23 (8%) of the 274 patients: cytomegalovirus (CMV) and Epstein-Barr virus (EBV) were the viruses most frequently found (Table 3). Uncontrolled CMV viremia requiring antiviral treatment was observed for 8 patients. Six patients had CMV disease with proven organ infection, including 1 patient with retinitis, 2 with ulcerative digestive infections, and 3 with lung infections, one of whom also had encephalitis. One patient had a combined adenovirus and EBV disseminated infection (blood, lung and gut) requiring rituximab with partial efficacy (P234). Chronic active EBV infections ( $n = 10$ ) were less severe and did not require specific treatment. A few cases of severe human herpesvirus 6 (HHV6) and parvovirus ( $n = 4$ ) infection were described, resulting in severe sepsis or hemophagocytosis, and 1 patient developed BK virus urinary tract infection with functional consequences. Two

patients displayed severe disease because of live virus vaccines (smallpox and measles). Two patients had chronic hepatitis C infection leading to cirrhosis.

**Autoimmune and inflammatory diseases**

Clinical autoimmunity and/or autoimmune antibodies were documented in 118 (43%) of the 274 patients (Table 4; supplemental Table 3). Median age was 24 years in this subpopulation (range: 3.5-71 years) at the time of the study, and the M/F sex ratio was 0.79. One hundred one (37%) displayed clinical autoimmune manifestations, which represents a much higher rate than the standard population (~3%),<sup>62</sup> and 19% of these patients had >1 clinical autoimmune disorder. Most of these features were related to thyroid disease:



**Table 2. Sites of infection in patients with *STAT1* GOF mutations**

Type of infections	Patients (%) n = 274
<b>Mucocutaneous fungal infections</b>	268 (98)
Oropharyngeal mycosis	254 (93)
Cutaneous mycosis	155 (57)
Esophageal/genital mycosis	153 (56)
Onychomycosis	153 (56)
Aphthous stomatitis	125 (46)
Scalp mycosis	55 (20)
<b>Invasive fungal infections</b>	28 (10)
Invasive candidiasis	10 (4)
Other invasive infections	20 (7)
<b>Bacterial infections*</b>	202 (74)
LRI	129 (47)
ENT	121 (44)
Skin	77 (28)
Others†	24 (9)
<b>Mycobacterial infections</b>	17 (6)
Lung disease	6 (2)
Adenitis/skin disease	5 (2)
Disseminated disease	6 (2)
<b>Viral infections*</b>	103 (38)
Cutaneous	88 (32)
Systemic	23 (8)

ENT: ear, nose, and throat.

\*Probable or proven bacterial/viral infection.

†Severe acute gastroenteritis, septicemia, bone and joint infections, recurrent urinary tract infections.

hypothyroidism (n = 60) requiring hormone substitution, and hyperthyroidism in 1 patient; 62% of these patients were women. Some patients displayed other autoimmune endocrine diseases, mainly type 1 diabetes mellitus (n = 11). Cutaneous diseases were observed in 28 patients displaying vitiligo, alopecia, or psoriasis. Five female patients displayed SLE with systemic features (ie, vasculitis, serositis or antiphospholipid syndrome with a history of thrombo-embolism), and 1 patient had scleroderma. A few patients displayed pernicious anemia (n = 1) or celiac disease (n = 4) with specific autoantibodies (auto-Abs). Autoimmune hepatitis began before adulthood in 6 patients (67% being men). Hematological autoimmunity (n = 11, 73% of men) consisted of chronic hemolytic anemia or autoimmune thrombocytopenia during childhood. Two patients had ankylosing spondylitis, and 1 patient had multiple sclerosis. Six patients displayed inflammatory bowel disease including Crohn's disease (n = 2), enteropathy with lymphocytic infiltration (n = 2), and ulcerative colitis (n = 2). Auto-Abs were found in 66 of the 157 patients tested (42%). Most patients with clinical autoimmunity tested were found positive for autoantibodies (n = 49/75, 65%), mostly for anti-nuclear Abs (n = 18), anti-thyroid Abs (n = 21), Abs against other endocrine glands (n = 7), and gastrointestinal Abs (n = 8). Auto-Abs were also detected in the absence of clinical symptoms in 20% of the patients tested (n = 17/84), mostly anti-nuclear Abs (76%) and anti-thyroid Abs (18%).

### Other clinical features

Aneurysms (n = 17/274, 6%; Table 4; supplemental Table 3; Figure 2) occurred at a higher rate than the standard population (~3%)<sup>63</sup> and were diagnosed at a median age of 23 years (range: 3-50 years), which is much younger than the standard population (~50 years).<sup>63</sup> There was no difference between the sexes. Aneurysms tend to be more frequent in patients with underlying autoimmunity (P = .05), type I diabetes in

particular (27% vs 5%, P < .01). Diagnosis was based on symptoms and radiologically confirmed in 15 patients. Systematic radiological investigations identified 2 additional patients. Cerebral imaging was also carried out for 25 other asymptomatic patients and yielded normal results. Fifty percent of symptomatic patients endured hemorrhages; the others had abdominal pain, and neurological manifestations, such as hemiplegia, seizures or attention lapses. Most aneurysms were located in the cerebral vascular system (82%). Most affected patients had multiple aneurysms in the CNS, mostly in the basilar trunk, vertebral arteries, and cerebral and intracranial carotid arteries. Extracerebral aneurysms were found in the abdominal aorta, iliac arteries, and lung arteries (n = 3). Histological and microbiological investigations were performed in 1 patient (P27, supplemental Table 3) and were negative.<sup>44</sup> The other neurological features observed were cerebral vasculitis (n = 3), epilepsy (n = 3), polyneuropathy (n = 1), multiple sclerosis (n = 1), and hemiplegia of unknown origin (n = 1). Cognitive disability was diagnosed in 8 patients during childhood, a frequency slightly higher than that in the general population.<sup>64</sup> Fourteen patients had cutaneous, gastrointestinal, or laryngeal carcinoma, 11 of which were squamous cell carcinomas, 1 patient had melanoma, and another one acute leukemia, leading to an overall cancer rate of 5.8% (95% confidence interval 3.03% to 8.57%) (Table 4). The M/F ratio was 1.0. We compared this cancer rate with that observed in the reference 2000 US Standard population.<sup>65,66</sup> To account for the low median age of the *STAT1* GOF

**Table 3. Documented pathogens associated with *STAT1* GOF mutations**

Associated pathogens	Documented infections (%)
<b>Mucocutaneous fungal infections</b>	n = 172
<i>Candida albicans</i>	140 (82)
Dermatophytes	23 (13)
Others*	9 (5)
<b>Invasive fungal infections</b>	n = 34
<i>Candida</i> spp.	10 (29)
<i>Pneumocystis jirovecii</i>	6 (18)
<i>Aspergillus</i> spp.	5 (15)
<i>Cryptococcus</i> spp.	6 (18)
Others†	7 (20)
<b>Bacterial infections</b>	n = 99
<i>Staphylococcus aureus</i>	36 (36)
<i>Streptococcus</i> spp.	20 (20)
<i>Pseudomonas aeruginosa</i>	13 (13)
<i>Haemophilus influenzae</i>	9 (9)
Others‡	21 (21)
<b>Mycobacterial infections</b>	n = 17
<i>M tuberculosis</i>	6 (35)
BCG strain	5 (30)
Others§	6 (35)
<b>Viral infections  </b>	n = 162
Herpes simplex	44 (27)
Varicella-zoster	51 (31)
Molluscum contagiosum/warts	32 (12)
CMV or EBV	25 (15)
Others¶	10 (6)
Parasitic infections#	n = 2

\**C glabrata*, *C tropicalis*, *C kefyr*, *C membranifaciens*, *C famata*, *C dubliniensis*, and *Malassezia furfur*.†*Histoplasma*, *Trichosporon*, *Coccidioides*, *Apophysomyces*.‡Enterobacteriaceae, *Campylobacter* spp., *Stenotrophomonas maltophilia*, anaerobic pathogens, *Neisseria meningitidis*.§*M avium*, *M fortuitum*, *M mucogenicum*, *M genavense*, or not identified.

||Clinically probable or microbiologically confirmed.

¶HHV6, adenovirus, parvovirus, BK virus, hepatitis C virus, live virus vaccine disease.

#Giardiasis, visceral leishmaniasis.



**Figure 2. Photographs of patients with *STAT1* GOF mutations.** (A) Thrush. (B-C) Onychomycosis. (D-F) Cutaneous candidiasis. (G) Dermatophytes. (H) Cutaneous and genital candidiasis. (I) Cutaneous candidiasis. (J) Angular stomatitis. (K) Esophageal candidiasis. (L) Bronchiectasis. (M) Cerebral aneurysm. Complete phenotype of each patient is described in the supplemental Tables 1-3.

patients, we computed the expected cancer rate in the reference population as a weighted average of the age-specific cancer rates, in which the weights were the proportions of *STAT1* GOF patients in the corresponding age groups. The expected age-adjusted cancer rate in the reference population was found to be 1.1%, below the lower bound of the confidence interval of the rate in the population of patients studied here. This result supports that *STAT1* GOF patients may have an increased risk of cancer. Carcinoma were more frequent in patients with a history of esophagitis (10% vs 2%,  $P = .002$ ). Two patients

had benign tumors of vascular origin. Finally, other diseases, such as asthma, eczema, and signs of allergy were observed in 54 patients (20%), a frequency similar to that found in the general population and without unusual severity.<sup>67</sup>

#### Preventive and curative treatment

Two hundred two (of 274, 74%) patients needed long-term antifungal treatment, mostly systemic (Table 5). Fluconazole was the major agent



**Table 4. Other clinical features and outcome of patients with *STAT1* GOF mutations**

	Patients (%)
<b>Noninfectious phenotypes</b>	<b>n = 274</b>
<b>Autoimmunity/inflammatory disease</b>	101 (37)
Thyroid disease	61 (22)
Other endocrine disease*	12 (4)
Skin disease†	28 (10)
Gastrointestinal disease‡	11 (4)
Autoimmune hepatitis	6 (2)
Autoimmune cytopenia§	11 (4)
Others	3 (1)
<b>Aneurysm</b>	17 (6)
Cerebral	14 (5)
Extracerebral	3 (1)
<b>Tumor</b>	17 (6)
Benign	2 (0.7)
Squamous cell carcinoma	11 (4)
Gastrointestinal carcinoma	2 (0.7)
Others¶	3 (1)
<b>Other clinical features</b>	
Asthma/eczema	54 (20)
Bone fragility	5 (2)
<b>Clinical outcome</b>	
Failure to thrive	33 (12)
Dysphagia/esophageal stenosis	31 (11)
Bronchiectasis	57 (21)
Death	34 (12)

\*Diabetes mellitus, Addison's disease, growth hormone deficiency.

†Systemic lupus erythematosus (SLE), vitiligo, psoriasis, alopecia, scleroderma.

‡Biermer anemia, celiac disease, colitis.

§Immunological anemia or thrombocytopenia.

||Multiple sclerosis, ankylosing spondylitis.

¶Melanoma, basal cell carcinoma, acute lymphoblastic leukemia.

used for first-line treatment, followed by itraconazole or posaconazole. Clinical resistance to at least 1 antifungal was observed in 78 patients of the 202 patients treated with long-term antifungal therapy (39%), and in 8 of the 53 patients treated intermittently (15%). Twenty-five treated patients displayed resistances to >1 antifungal (10%). Results for strain susceptibility were available for 40% of the patients with CMC resistant to treatment and revealed a high level of resistance to azoles (98%). Most of these patients required second- or third-line treatments, such as voriconazole, echinocandins, terbinafine or liposomal amphotericin B. Patients with clinical resistance to antifungals had globally a more severe phenotype (recurrent pneumonia: 51% vs 25%  $P < .001$ , systemic fungal infections: 17% vs 7%  $P = .01$ , mortality: 21% vs 7%,  $P = .001$ ). Antibacterial prophylaxis was administered to 66 patients (of 274, 24%), for recurrent LRI or cutaneous staphylococcal disease; co-trimoxazole was the main agent used (Table 5). Thirty percent of patients with recurrent pneumonia received polyvalent IV IgG infusions (14% of all patients). One patient received GM-CSF infusions, IFN- $\alpha$ , and then acitretin, with no major improvement of CMC or herpes virus infections. Five patients received G-CSF, leading to a marked improvement in CMC lesions in 1 patient only. One patient received IFN- $\gamma$  from 6 to 15 years, with no detectable effect on CMC or LRIs. One patient (P116) was treated with JAK inhibitor ruxolitinib that led to significant clinical improvement of CMC without complete clearance of the disease.<sup>58</sup> Allogeneic hematopoietic stem cell transplantation (HSCT) was performed in 5 patients with severe CMC and recurrent bacterial or systemic viral infections; 3 of them died several months after HSCT, 1 from persistent hemophagocytic lymphohistiocytosis despite 3 HSCT (P157, phenotypically HLA-identical, cord blood transplantation, and haploidentical HSCT), 1 from disseminated

CMV at 30 years (P160, fully matched HSCT), and the other from interstitial lung disease at 2 years (P190, HLA-identical sibling HSCT). The other 2 are currently alive without serious complications (P161, cord blood transplantation from mismatched donor and P234, phenotypically HLA-identical HSCT). Six patients underwent immunosuppressive treatment of severe autoimmune disorders, and had a good clinical response, without serious infectious complications. One patient underwent radiotherapy for squamous cell carcinoma and recovered fully, and 2 others had rituximab for uncontrolled systemic EBV infection.

### Clinical outcome

Thirty-three patients (of 274, 12%) failed to thrive (Table 4). Thirty-one patients (11%) developed secondary gastrointestinal complications, such as dysphagia (n = 19) or esophageal stenosis (n = 12). Most of them had a history of recurrent esophageal candidiasis (n = 30, 97%). Bronchiectasis and cystic pulmonary lesions developed in 57 patients (of 274, 21%) (Table 4; Figure 2), all with a previous history of recurrent pneumonia or bronchitis, and displaying acute secondary infectious episodes caused by *P aeruginosa* (n = 11 out of 57, 19%), *S aureus* (n = 6, 11%), nontuberculous mycobacteria (n = 4, 7%) or Enterobacteriaceae (n = 2, 3%). One of these patients also had an associated pneumocyst, and 3 other patients underwent lobectomy. Thirty-four patients (of 274, 12%) died (Table 4; supplemental Table 3) at a median age of 30 years (range: 1-58 years). The main causes of death were severe infections (n = 13, 38%), ie, disseminated BCG disease, histoplasmosis, coccidioidomycosis, CMV, *S aureus* septicemia or bacterial LRI, at a median age of 17 years (range: 1-52 years), cancer (n = 8, 24%), at a median age of 43 years (range: 33-58 years), and cerebral hemorrhage because of aneurysm (n = 5, 15%), at a median age of 9 years (range: 4-34 years). Overall, cumulative survival rate at 60 years of age was significantly lower (31%) in patients who developed invasive infection, cancer, and/or symptomatic aneurysm than those without (87%) any of these 3 complications (Figure 1B). Other causes of death possibly associated with *STAT1* GOF phenotypes

**Table 5. Treatments of patients with *STAT1* GOF mutations**

	Patients (%)
<b>Treatment</b>	<b>n = 274</b>
No antifungal treatment	19 (7)
Intermittent antifungal treatment	53 (19)
<b>Current long-term antifungal treatment</b>	202 (74)
Local treatment only	8 (3)
Oral fluconazole	150 (55)
Oral posaconazole/itraconazole	53 (19)
Oral voriconazole	19 (7)
IV echinocandins	6 (2)
Oral terbinafine	3 (1)
IV amphotericin B	7 (3)
<b>Antibiotic prophylaxis</b>	66 (24)
Co-trimoxazole	41 (15)
Macrolides	20 (7)
Others*	12 (4)
Antiviral prophylaxis	4 (1)
Polyvalent immunoglobulins	37 (14)
Immunotherapy†	8 (3)
Immunosuppressive therapies‡	6 (2)
Hematopoietic stem cell transplantation (HSCT)	5 (2)

\*Nebulized colimycin, topical fucidic acid, fluoroquinolone, tetracycline, amoxicillin.

†Granulocyte-colony stimulating factor (G-CSF)/granulocyte macrophage-colony stimulating factor (GM-CSF), interferon (IFN) $\alpha/\gamma$ , rituximab.

‡Cyclosporine, azathioprine, corticoids, or mycophenolate mofetil.

included fulminant hepatitis (1 patient from an unknown cause, and 1 from autoimmune hepatitis), and complication of HSCT in 3 patients. Three patients died of unrelated causes, at the ages of 10, 46, and 50 years. Lymphocyte cell subset abnormality (low CD4<sup>+</sup> and/or CD19<sup>+</sup> lymphocyte counts) was associated with a higher mortality rate (19% vs 6%, ( $P = .004$ ), and 25% vs 7%, ( $P < .001$ ), respectively).

## Discussion

We show here that CMC is the most common infectious manifestation in patients carrying *STAT1* GOF mutations, and is frequently resistant to azole treatments. Surprisingly, these patients often display viral, bacterial, and other fungal infections. In addition, these patients also develop various types of autoimmunity, as well as aneurysms and carcinomas, much more often than the general population. The presence of these latter complications accounts for a poor outcome. The penetrance of CMC is very high, as only 6 (2%) *STAT1* GOF patients (2.8% excluding all probands) never had CMC at a median age of 32 years. CMC typically begins in early childhood, although it may first present up to the third decade of life, and signs and symptoms varied within and between families.<sup>20</sup> In these patients, CMC is most likely the consequence of impaired IL-17A and IL-17F immunity,<sup>19-21,23,39,42,44</sup> as it is also seen in patients with inborn errors of IL-17A/F immunity.<sup>16-18</sup> Circulating IL-17A-producing T cells counts are low in most but not all patients tested (82%). Normal counts therefore cannot exclude a diagnosis of a *STAT1* GOF mutation. The frequency of CMC in the cohort described here may be overestimated as a result of an ascertainment bias. Clearly, *STAT1* GOF mutations underlie biological phenomena that can cause markedly different phenotypes that are rarely mutually exclusive, as evidenced by CMC-free patients. Other fungal infections included mostly superficial dermatophytosis, without the deep dermatophytosis seen in some *CARD9*-deficient patients.<sup>14,68</sup> Invasive infections by a variety of yeasts, molds, and dimorphic fungi were observed in some patients.<sup>23,34,37,40</sup> Cutaneous and bronchopulmonary infections caused by *S aureus* were also observed, as in patients with AD-HIES. The occurrence of staphylococcal skin disease in some patients with CMCD and inborn errors of IL-17 immunity<sup>1,16,18</sup> suggests the involvement of 1 or more IL-17 cytokines. Its occurrence in patients with auto-Abs against IL-6 suggests that impaired STAT3-dependent IL-6 signaling may also be involved.<sup>20,69,70</sup> Respiratory tract infections may be favored by low IgA, IgG2, and/or IgG4 levels as well as a poor Ab response, as documented in some patients.<sup>71,72</sup> The occurrence of mycobacterial and viral infections is paradoxical, as biallelic LOF *STAT1* mutations underlie such infections by impairing IFN- $\gamma$  and IFN- $\alpha/\beta$  responses, respectively, while GOF *STAT1* mono-allelic mutations enhance signaling downstream of these cytokines.<sup>20,23,37,45,73</sup> Viral disease might be because of exhaustion of virus-specific T cells, as described for patients with AD HIES,<sup>74</sup> and mycobacterial disease to refractory responses to IFN- $\gamma$ .<sup>37</sup>

Patients with GOF *STAT1* mutations also displayed autoimmunity, aneurysms, and malignancies. Autoimmunity is not observed in patients with inborn errors of IL-17A/F immunity or in patients with AD HIES. Other monogenic autoimmune disorders may shed more light on the pathogenesis of autoimmunity in patients with *STAT1* GOF mutations.<sup>75</sup> IPEX syndrome, caused by *FOXP3* deficiency, underlies forms of autoimmunity that occasionally overlap with those in *STAT1* GOF patients.<sup>23,75</sup> *STAT1* GOF mutations however do not seem to affect *FOXP3* expression and the development of Tregs.<sup>23</sup>

The autoimmune features observed in patients with *STAT1* GOF mutations also overlap with those of APS-1 patients (with mutations in *AIRE*). In addition to CMC, APS-1 patients usually present hypoparathyroidism, adrenal insufficiency, and, occasionally, thyroiditis, autoimmune enteropathy, vitiligo, alopecia, diabetes, and hepatitis.<sup>3,76</sup> Although the corresponding patients share autoimmune phenotypes, LOF *AIRE* and GOF *STAT1* mutations have not been mechanistically connected yet. The enhanced autoimmunity of patients with *STAT1* GOF mutations is likely to result from stronger IFN- $\alpha/\beta$  signaling, as some of these autoimmune features are observed in patients treated with recombinant IFN- $\alpha$  (eg, thyroiditis) and in patients with type I interferonopathies (eg, SLE).<sup>77,78</sup> It remains unclear why the various inborn errors resulting in enhanced IFN- $\alpha/\beta$  immunity give rise to such diverse and only partially overlapping phenotypes.<sup>77,79</sup>

The outcome of patients with *STAT1* GOF mutations is poor. Premature death (12%) results from infections (38%), aneurysms (15%), cancers (24%), and autoimmune hepatitis (6%). Infections remain a major cause of premature death in these patients, with a high proportion of severe and/or recurrent LRI infections, leading to lung sequelae, viral, and invasive fungal infections.<sup>1,2</sup> The proportion of patients with cerebral aneurysm has probably been underestimated, as radiological investigations were performed for only 42 patients, including 15 patients with clinical signs suggestive of aneurysm. Given the high morbidity and mortality of cerebral aneurysms, systematic radiological screening is probably warranted in all patients, when the diagnosis is made, and should be repeated during life. Aneurysms may form because of conjunctive tissue abnormalities, as in patients with *STAT3* deficiency,<sup>80</sup> and/or impaired IL-17 immunity, as shown in animal models.<sup>81</sup> Their pathogenesis may also be autoimmune, as in cerebral vasculitis, or infectious, as in systemic *Candida* infection.<sup>1</sup> Patients with aneurysms did not differ markedly from the others in terms of invasive fungal infection rates ( $P = .6$ ), but they seemed to display more autoimmune disorders. Patients with an interferonopathy caused by *SAMHD1* mutations also display cerebral vasculitis and aneurysm.<sup>77,82</sup> The frequency of skin and ENT carcinomas was high, and probably better estimated than that of cerebral aneurysm. These conditions are better understood and probably result, at least in part, from CMC and the chronic mucocutaneous inflammation (especially esophagitis) it causes.<sup>83</sup> Enhanced IFN production is unlikely to play a direct role, as these cytokines have antitumoral activity.<sup>84</sup> Patients with esophagitis and dysphagia should be regularly screened for tumor by sequential biopsies of the esophagus. Taken together, *STAT1* GOF-associated AD CMCD should not be considered benign and should be handled at centers with experience in the diagnosis and management of such patients.

The heterogeneity of clinical care for the patients in this cohort makes it difficult to issue uniform recommendations concerning optimal management. The high rate of CMC resistance to antifungal treatments is a major issue. Indeed, azole resistance necessitates the intravenous use of alternative antifungals (amphotericin B, echinocandins) that could lead to toxicity and major lifestyle changes. Furthermore, as resistance to treatment is associated with severe infectious phenotype (systemic bacterial or fungal infections) and a poor outcome, these patients should be seen more frequently. However, long-term antifungal therapy remains the first line for CMC treatment, whereas antibiotic prophylaxis and IgG infusion should be considered for patients with recurrent LRIs, with or without detectable Ab deficiency. Second line therapies, such as GM-CSF and G-CSF treatments have been proposed as a way of enhancing IL-17 T-cell differentiation.<sup>85-87</sup> However, despite an encouraging recent report,<sup>41</sup> these adjuvant therapies were useful in only 1 of the 5 patients in which they were



tried. Treatments targeting the JAK-STAT pathway, such as the JAK1/2 inhibitor ruxolitinib, which has been approved for myelofibrosis treatment, have shown significant clinical efficiency and might become the treatment of choice for severe CMC resistant to antifungals.<sup>30,58</sup> HSCT was performed in 5 patients with severe and recurrent fungal and viral infections,<sup>25</sup> but 3 of them died. HSCT does not appear to be a viable option at the present time. However, pilot studies with closely matched donors should be considered. Other potential immunotherapies such as recombinant IL-17A or IL-17F or inhibitors of STAT1 activity for specific use in patients with GOF *STAT1* mutations may prove more useful. IFN- $\alpha/\beta$ -blocking antibodies might also alleviate autoimmune features and may be considered in the future. The options must be weighed up carefully, bearing in mind the various anti-infectious, antitumor, and autoimmune effects of each cytokine or Ab. In conclusion, *STAT1* GOF mutations are the most common known genetic etiology of CMCD and are found in about half the patients studied.<sup>1,88</sup> However, given the unexpected broad array of clinical diseases revealed by our current study, physicians should also evoke *STAT1* GOF in patients whose candidiasis is a minor, incidental finding, and even in patients without candidiasis. Disease severity results from the deleterious impact of CMCD on quality of life, and/or the poor outcome associated with infections, autoimmunity, aneurysm, and carcinoma.

## Acknowledgments

The authors thank the patients and their relatives, as well as Lahouari Amar and Yelena Nemirovskaya.

The Laboratory of Human Genetics of Infectious Diseases was supported by the French National Research Agency (ANR) under the “Investments for the future” program (ANR-10-IAHU-01), GENCMCD grant (ANR-11-BSV3-005-01), HGDIFD (ANR-14-CE15-0006), and Laboratoire d’Excellence Integrative Biology of Emerging Infectious Diseases (# ANR-10-LABX-62-IBED); INSERM; University Paris Descartes; the Jeffrey Modell Foundation–Translational Research Program; the Jeffrey Modell Centers Network; the Rockefeller University; the St. Giles Foundation; and the National Institute of Allergy and Infectious Diseases, National Institutes of Health (grant U01AI109697). This work was also supported by the ERA-Net for Research Programmes on Rare Diseases “E-RARE EURO CMC” (ANR-14-RARE-0005-02). B.G. was supported by the Helmholtz Center grant DZIF (8000805-3\_TTU\_IICH 07.801). J.R. was supported by Gebert R f Stiftung–programme Rare Diseases–New Approaches, EUFP7 CELL-PID, EUFP7 NET4CGD, ZIHP. C.R.-G. was supported by the Ministerio de Sanidad, Spain (grant PI13/1456), from the Regional Development Fund–European Social Fund (FEDER-FSE).

## Authorship

Contribution: J.T. and A.P. had full access to all the data in the study and take responsibility for the integrity of the data and the accuracy of the data analysis; J.T., J.-L.C., and A.P. did the scientific literature

search and were responsible for the study design; all authors participated in the patients’ inclusion and data collection; J.T. and A.P. centralized the data; J.T. undertook the data analysis; all authors interpreted the data; J.T. and A.P. created the figures; J.T., J.-L.C., and A.P. prepared the first draft of the manuscript; and all authors were involved in the writing and/or revision of the manuscript.

Conflict-of-interest: The authors declare no competing financial interests.

A complete list of the members of the International STAT1-GOF Study Group appears in “Appendix.”

Correspondence: Anne Puel, Laboratory of Human Genetics of Infectious Diseases, Necker Branch, INSERM UMR1163, Imagine Institute, Necker-Enfants Malades Hospital, 24 Boulevard du Montparnasse, 75015 Paris, France; e-mail: anne.puel@inserm.fr.

## Appendix: study group members

The members of the International STAT1-GOF Study Group: Sophie Cypowyj, Caroline Thumerelle, Antoine Toulon, Jacinta Bustamante, Natalia Tahuil, Aicha Salhi, Sorina Boiu, Charu Chopra, Daniela Di Giovanni, Liliana Bezrodnik, Jeannette Boutros, Caroline Thomas, Gina Lacuesta, Sarah Jannier, Anne-Sophie Korganow, Catherine Paillard, David Boutboul, M lanie Bu , Aude Marie-Cardine, Sophie Bayart, M lanie Migaud, Laurence Weiss, Marina Karmochkine, Juan-Miguel Garcia-Martinez, Jean-Louis Stephan, Philippe Bensaid, Guy-Patrick Jeannoel, Torsten Witte, Ulrich Baumann, Thomas Harter, Carmen Navarrete, Antony Terance Benjamin, Davide Firinu, Claudio Pignata, Paolo Picco, David Mendoza, Saul Oswaldo Lugo Reyes, Carlos Torres Lozano, Margarita Ortega-Cisneros, Mariana Cortina, Mehrmaz Mesdaghi, Mohammad Nabavi, Teresa Espa ol, Ma a Teresa Mart nez-Saavedra, Nima Rezaei, Samaneh Zoghi, Malgorzata Pac, Vincent Barlogis, Gabriel Revon-Rivi re, Yishai Haimi-Cohen, Ronen Spiegel, Dan Miron, Jabir Bouchaib, Lizbeth Blancas-Galicia, Beata Toth, Barbara Drexel, Pierre Simon Rohrl ch, Olivier Lesens, Miriam Hoernes, Elizabeth Drewe, Mario Abinum, Julie Sawalle-Belohradsky, Gerhard Kindle, Mark Depner, Lili Milani, Tiit Nikopensius, Maida Remm, Ulvi Gerst Talas, Mark Tucker, Mary Willis, Stephanie Leonard, Hilaire Meuwissen, Ronald M. Ferdman, Mark Wallace, Mukesh M. Desai, Prasad Taur, Raffaele Badolato, Beata Soltesz, Christina Schnopp, Annette F. Jansson, Deniz Ayvaz, Nadejda Shabashova, Liudmyla Chernyshova, Anastasia Bondarenko, Despina Moshous, Benedicte Neven, Chahinez Boubidi, Fatima Ailal, Giuliana Giardino, Stefano Del Giacco, Marie-Elisabeth Bougnoux, Kohsuke Imai, Teppei Okawa, Yoko Mizoguchi, Yusuke Ozaki, Masato Takeuchi, Akira Hayakawa, Birgit L gering, Kristian Reich, Timo Buhl, Kilian Eyerich, Martin Schaller, Peter D. Arkwright, Andrew R. Gennery, Andrew J. Cant, Adilia Warris, Stefanie Henri t, Najla Mekki, Ridha Barbouche, Imen Ben Mustapha, Christine Bodemer, Michel Polak, Emmanuel Grimp rel, Pierre-R gis Burg l, Alain Fischer, Olivier Hermine, Marianne Debr , Dilara Kocacyk, Fatima Dhalla, Smita Y. Patel, Leen Moens, Filomeen Haerynck, Melissa Dullaers, Levi Hoste, Ozden Sanal, Sara Sebnem Kilic, Joachim Roesler, Fanny Lanternier, Olivier Lortholary, Claire Fieschi, Joseph A. Church, Chaim Roifman, Araya Yuenyongviwat, P rt Peterson, St phanie Boisson-Dupuis, Laurent Abel, Beatriz E. Marciano, and Mihai G. Netea.

## References

- Puel A, Cypowyj S, Maródi L, Abel L, Picard C, Casanova JL. Inborn errors of human IL-17 immunity underlie chronic mucocutaneous candidiasis. *Curr Opin Allergy Clin Immunol*. 2012;12(6):616-622.
- Chandesris MO, Melki I, Natividad A, et al. Autosomal dominant STAT3 deficiency and hyper-IgE syndrome: molecular, cellular, and clinical features from a French national survey. *Medicine (Baltimore)*. 2012;91(4):e1-e19.
- Kisand K, Peterson P. Autoimmune polyendocrinopathy candidiasis ectodermal dystrophy: known and novel aspects of the syndrome. *Ann N Y Acad Sci*. 2011;1246:77-91.
- Glocker EO, Hennigs A, Nabavi M, et al. A homozygous CARD9 mutation in a family with susceptibility to fungal infections. *N Engl J Med*. 2009;361(18):1727-1735.
- McGurk M, Holmes M. Chronic mucocutaneous candidiasis and oral neoplasia. *J Laryngol Otol*. 1988;102(7):643-645.
- Marazzi MG, Bondi E, Giannattasio A, Strozzi M, Savioli C. Intracranial aneurysm associated with chronic mucocutaneous candidiasis. *Eur J Pediatr*. 2008;167(4):461-463.
- Milner JD, Brencley JM, Laurence A, et al. Impaired T(H)17 cell differentiation in subjects with autosomal dominant hyper-IgE syndrome. *Nature*. 2008;452(7188):773-776.
- de Beaucoudrey L, Puel A, Filipe-Santos O, et al. Mutations in STAT3 and IL12RB1 impair the development of human IL-17-producing T cells. *J Exp Med*. 2008;205(7):1543-1550.
- Ma CS, Chew GY, Simpson N, et al. Deficiency of Th17 cells in hyper IgE syndrome due to mutations in STAT3. *J Exp Med*. 2008;205(7):1551-1557.
- Aaltonen J, Björnsen P, Perheentupa J, et al. An autoimmune disease, APECED, caused by mutations in a novel gene featuring two PHD-type zinc-finger domains. *Nat Genet*. 1997;17(4):399-403.
- Puel A, Döffinger R, Natividad A, et al. Autoantibodies against IL-17A, IL-17F, and IL-22 in patients with chronic mucocutaneous candidiasis and autoimmune polyendocrine syndrome type I. *J Exp Med*. 2010;207(2):291-297.
- Kisand K, Boe Wolff AS, Podkrajsek KT, et al. Chronic mucocutaneous candidiasis in APECED or thymoma patients correlates with autoimmunity to Th17-associated cytokines. *J Exp Med*. 2010;207(2):299-308.
- de Beaucoudrey L, Samarina A, Bustamante J, et al. Revisiting human IL-12Rβ1 deficiency: a survey of 141 patients from 30 countries. *Medicine (Baltimore)*. 2010;89(6):381-402.
- Lanternier F, Pathan S, Vincent QB, et al. Deep dermatophytosis and inherited CARD9 deficiency. *N Engl J Med*. 2013;369(18):1704-1714.
- Drewniak A, Gazendam RP, Tool AT, et al. Invasive fungal infection and impaired neutrophil killing in human CARD9 deficiency. *Blood*. 2013;121(13):2385-2392.
- Boisson B, Wang C, Pedergrnna V, et al. An ACT1 mutation selectively abolishes interleukin-17 responses in humans with chronic mucocutaneous candidiasis. *Immunity*. 2013;39(4):676-686.
- Ling Y, Cypowyj S, Aytekin C, et al. Inherited IL-17RC deficiency in patients with chronic mucocutaneous candidiasis. *J Exp Med*. 2015;212(5):619-631.
- Puel A, Cypowyj S, Bustamante J, et al. Chronic mucocutaneous candidiasis in humans with inborn errors of interleukin-17 immunity. *Science*. 2011;332(6025):65-68.
- Eyerich K, Foerster S, Rombold S, et al. Patients with chronic mucocutaneous candidiasis exhibit reduced production of Th17-associated cytokines IL-17 and IL-22. *J Invest Dermatol*. 2008;128(11):2640-2645.
- Liu L, Okada S, Kong XF, et al. Gain-of-function human STAT1 mutations impair IL-17 immunity and underlie chronic mucocutaneous candidiasis. *J Exp Med*. 2011;208(8):1635-1648.
- van de Veerdonk FL, Plantinga TS, Hoischen A, et al. STAT1 mutations in autosomal dominant chronic mucocutaneous candidiasis. *N Engl J Med*. 2011;365(1):54-61.
- Boisson B, Quartier P, Casanova JL. Immunological loss-of-function due to genetic gain-of-function in humans: autosomal dominance of the third kind. *Curr Opin Immunol*. 2015;32:90-105.
- Uzel G, Sampaio EP, Lawrence MG, et al. Dominant gain-of-function STAT1 mutations in FOXP3 wild-type immune dysregulation-polyendocrinopathy-enteropathy-X-linked-like syndrome. *J Allergy Clin Immunol*. 2013;131(6):1611-1623.
- Takezaki S, Yamada M, Kato M, et al. Chronic mucocutaneous candidiasis caused by a gain-of-function mutation in the STAT1 DNA-binding domain. *J Immunol*. 2012;189(3):1521-1526.
- Aldave JC, Cachay E, Núñez L, et al. A 1-year-old girl with a gain-of-function STAT1 mutation treated with hematopoietic stem cell transplantation. *J Clin Immunol*. 2013;33(8):1273-1275.
- Altman MC, Hagin D, Buchbinder D, et al. A young boy with a novel, autosomal-dominant signal transducer and activator of transcription 1 (STAT1) hypermorphic mutation presenting with pneumocystis jirovecii pneumonia (PJP), chronic mucocutaneous candidiasis (CMC), and combined immunodeficiency [abstract]. *J Allergy Clin Immunol*. 2014;133(2, suppl):AB250.
- Baer Ellington AE, Shih JA. Sporadic case of chronic mucocutaneous candidiasis (CMC) due to a gain-of-function mutation in STAT1 in a 13 year old female [abstract]. *J Allergy Clin Immunol*. 2014;133(2, suppl):AB250.
- Firinu D, Massidda O, Lorrai MM, et al. Successful treatment of chronic mucocutaneous candidiasis caused by azole-resistant *Candida albicans* with posaconazole. *Clin Dev Immunol*. 2011;2011:283239.
- Frans G, Moens L, Schaballie H, et al. Gain-of-function mutations in signal transducer and activator of transcription 1 (STAT1): chronic mucocutaneous candidiasis accompanied by enamel defects and delayed dental shedding. *J Allergy Clin Immunol*. 2014;134(5):1209-1213.
- Higgins E, Al Shehri T, McAleer MA, et al. Use of ruxolitinib to successfully treat chronic mucocutaneous candidiasis caused by gain-of-function signal transducer and activator of transcription 1 (STAT1) mutation. *J Allergy Clin Immunol*. 2015;135(2):551-553.
- Hori T, Ohnishi H, Teramoto T, et al. Autosomal-dominant chronic mucocutaneous candidiasis with STAT1-mutation can be complicated with chronic active hepatitis and hypothyroidism. *J Clin Immunol*. 2012;32(6):1213-1220.
- Kilic SS, Puel A, Casanova JL. Orf infection in a patient with Stat1 gain-of-function. *J Clin Immunol*. 2015;35(1):80-83.
- Kumar N, Hanks ME, Chandrasekaran P, et al. Gain-of-function signal transducer and activator of transcription 1 (STAT1) mutation-related primary immunodeficiency is associated with disseminated mucormycosis. *J Allergy Clin Immunol*. 2014;134(1):236-239.
- Lee PP, Mao H, Yang W, et al. Penicillium marneffei infection and impaired IFN-gamma immunity in humans with autosomal-dominant gain-of-phosphorylation STAT1 mutations. *J Allergy Clin Immunol*. 2014;133(3):894-896.
- Mekki N, Ben-Mustapha I, Liu L, et al. IL-17 T cells' defective differentiation in vitro despite normal range ex vivo in chronic mucocutaneous candidiasis due to STAT1 mutation. *J Invest Dermatol*. 2014;134(4):1155-1157.
- Salim N, Leiding J. Fungal granuloma and chronic mucocutaneous candidiasis [abstract]. *J Allergy Clin Immunol*. 2014;133(2, suppl):AB251.
- Sampaio EP, Hsu AP, Pechacek J, et al. Signal transducer and activator of transcription 1 (STAT1) gain-of-function mutations and disseminated coccidioidomycosis and histoplasmosis. *J Allergy Clin Immunol*. 2013;131(6):1624-1634.
- Sharfe N, Nahum A, Newell A, et al. Fatal combined immunodeficiency associated with heterozygous mutation in STAT1. *J Allergy Clin Immunol*. 2014;133(3):807-817.
- Smeekens SP, Plantinga TS, van de Veerdonk FL, et al. STAT1 hyperphosphorylation and defective IL12R/IL23R signaling underlie defective immunity in autosomal dominant chronic mucocutaneous candidiasis. *PLoS One*. 2011;6(12):e29248.
- Wang X, Lin Z, Gao L, et al. Exome sequencing reveals a signal transducer and activator of transcription 1 (STAT1) mutation in a child with recalcitrant cutaneous fusariosis. *J Allergy Clin Immunol*. 2013;131(4):1242-1243.
- Wildbaum G, Shahar E, Katz R, Karin N, Etzioni A, Pollack S. Continuous G-CSF therapy for isolated chronic mucocutaneous candidiasis: complete clinical remission with restoration of IL-17 secretion. *J Allergy Clin Immunol*. 2013;132(3):761-764.
- Yamazaki Y, Yamada M, Kawai T, et al. Two novel gain-of-function mutations of STAT1 responsible for chronic mucocutaneous candidiasis disease: impaired production of IL-17A and IL-22, and the presence of anti-IL-17F autoantibody. *J Immunol*. 2014;193(10):4880-4887.
- Al Rushood M, McCusker C, Mazer B, et al. Autosomal dominant cases of chronic mucocutaneous candidiasis segregates with mutations of signal transducer and activator of transcription 1, but not of Toll-like receptor 3. *J Pediatr*. 2013;163(1):277-279.
- Soltész B, Tóth B, Shabashova N, et al. New and recurrent gain-of-function STAT1 mutations in patients with chronic mucocutaneous candidiasis from Eastern and Central Europe. *J Med Genet*. 2013;50(9):567-578.
- Tóth B, Méhes L, Taskó S, et al. Herpes in STAT1 gain-of-function mutation [published correction appears in *Lancet*. 2012;380(9844):806]. *Lancet*. 2012;379(9835):2500.
- Mizoguchi Y, Tsumura M, Okada S, et al. Simple diagnosis of STAT1 gain-of-function alleles in patients with chronic mucocutaneous candidiasis. *J Leukoc Biol*. 2014;95(4):667-676.
- Romberg N, Mörbach H, Lawrence MG, et al. Gain-of-function STAT1 mutations are associated with PD-L1 overexpression and a defect in B-cell survival. *J Allergy Clin Immunol*. 2013;131(6):1691-1693.
- Depner M, Fuchs S, Raabe J, et al. The extended clinical phenotype of 26 patients with chronic

- mucocutaneous candidiasis due to gain-of-function mutations in STAT1. *J Clin Immunol*. 2016;36(1):73-84.
49. Dhalla F, Fox H, Davenport EE, et al. Chronic mucocutaneous candidiasis: characterisation of a family with STAT1 gain-of-function and development of an ex vivo assay for Th17 deficiency of diagnostic utility. *Clin Exp Immunol*. 2016;184(2):216-227.
  50. Dotta L, Scomodon O, Padoan R, et al. Clinical heterogeneity of dominant chronic mucocutaneous candidiasis disease: presenting as treatment-resistant candidiasis and chronic lung disease. *Clin Immunol*. 2016;164:1-9.
  51. Giardino G, Somma D, Cirillo E, et al. Novel STAT1 gain of function mutation and suppurative infections. *Pediatr Allergy Immunol*. 2016;27(2):220-223.
  52. Nielsen J, Kofod-Olsen E, Spaun E, et al. A STAT1-gain-of-function mutation causing Th17 deficiency with chronic mucocutaneous candidiasis, psoriasisiform hyperkeratosis and dermatophytosis [published online ahead of print October 22, 2015]. *BMJ Case Rep*. doi:10.1136/bcr-2015-211372.
  53. Martinez-Martinez L, Martinez-Saavedra MT, Fuentes-Prior P, et al. A novel gain-of-function STAT1 mutation resulting in basal phosphorylation of STAT1 and increased distal IFN- $\gamma$ -mediated responses in chronic mucocutaneous candidiasis. *Mol Immunol*. 2015;68(2, pt C):597-605.
  54. Tanimura M, Dohi K, Hirayama M, et al. Recurrent inflammatory aortic aneurysms in chronic mucocutaneous candidiasis with a gain-of-function STAT1 mutation. *Int J Cardiol*. 2015;196:88-90.
  55. Kataoka S, Muramatsu H, Okuno Y, et al. Extrapulmonary tuberculosis mimicking Mendelian susceptibility to mycobacterial disease in a patient with signal transducer and activator of transcription 1 (STAT1) gain-of-function mutation. *J Allergy Clin Immunol*. 2016;137(2):619-622.
  56. Zerbe CS, Marciano BE, Katial RK, et al. Progressive multifocal leukoencephalopathy in primary immune deficiencies: Stat1 gain of function and review of the literature. *Clin Infect Dis*. 2016;62(8):986-994.
  57. Bina SM, Yoon JY, Leiding JW. Variable presentations of gain of function STAT1 mutations within a single institution with features beyond chronic mucocutaneous candidiasis. *J Allergy Clin Immunol*. 2015;135(2):AB186.
  58. Mössner R, Diering N, Bader O, et al. Ruxolitinib induces interleukin-17 and ameliorates chronic mucocutaneous candidiasis caused by STAT1 gain-of-function mutation. *Clin Infect Dis*. 2016;62(7):951-953.
  59. Ruda Wessell KM, Holland SM, Lisco A, et al. A young adult male with chronic mucocutaneous candidiasis (CMC) with signal transduction and activator of transcription 1 (STAT 1) mutation and progressive multifocal leukoencephalopathy (PML) [abstract]. *J Allergy Clin Immunol*. 2015;135(2, suppl):AB186.
  60. Ng WF, von Delwig A, Carmichael AJ, et al. Impaired T(H)17 responses in patients with chronic mucocutaneous candidiasis with and without autoimmune polyendocrinopathy-candidiasis-ectodermal dystrophy. *J Allergy Clin Immunol*. 2010;126(5):1006-1015.
  61. Zwerling A, Behr MA, Verma A, Brewer TF, Menzies D, Pai M. The BCG World Atlas: a database of global BCG vaccination policies and practices. *PLoS Med*. 2011;8(3):e1001012.
  62. Jacobson DL, Gange SJ, Rose NR, Graham NM. Epidemiology and estimated population burden of selected autoimmune diseases in the United States. *Clin Immunol Immunopathol*. 1997;84(3):223-243.
  63. Viak MH, Algra A, Brandenburg R, Rinkel GJ. Prevalence of unruptured intracranial aneurysms, with emphasis on sex, age, comorbidity, country, and time period: a systematic review and meta-analysis. *Lancet Neurol*. 2011;10(7):626-636.
  64. Maulik PK, Mascarenhas MN, Mathers CD, Dua T, Saxena S. Prevalence of intellectual disability: a meta-analysis of population-based studies. *Res Dev Disabil*. 2011;32(2):419-436.
  65. 1975-2012. SCSR. SEER Cancer Statistics Review 1975-2012. [http://seer.cancer.gov/csr/1975\\_2012/browse\\_csr.php?sectionSEL=2&pageSEL=sect\\_02\\_table.21.html](http://seer.cancer.gov/csr/1975_2012/browse_csr.php?sectionSEL=2&pageSEL=sect_02_table.21.html). Accessed January 1, 2012.
  66. Edwards BK, Noone AM, Mariotto AB, et al. Annual Report to the Nation on the status of cancer, 1975-2010, featuring prevalence of comorbidity and impact on survival among persons with lung, colorectal, breast, or prostate cancer. *Cancer*. 2014;120(9):1290-1314.
  67. Asher MI, Montefort S, Björkstén B, et al; ISAAC Phase Three Study Group. Worldwide time trends in the prevalence of symptoms of asthma, allergic rhinoconjunctivitis, and eczema in childhood: ISAAC Phases One and Three repeat multicountry cross-sectional surveys. *Lancet*. 2006;368(9537):733-743.
  68. Grumach AS, de Queiroz-Telles F, Migaud M, et al. A homozygous CARD9 mutation in a Brazilian patient with deep dermatophytosis. *J Clin Immunol*. 2015;35(5):486-490.
  69. Puel A, Picard C, Lorrot M, et al. Recurrent staphylococcal cellulitis and subcutaneous abscesses in a child with autoantibodies against IL-6. *J Immunol*. 2008;180(1):647-654.
  70. Nanki T, Onoue I, Nagasaka K, et al. Suppression of elevations in serum C reactive protein levels by anti-IL-6 autoantibodies in two patients with severe bacterial infections. *Ann Rheum Dis*. 2013;72(6):1100-1102.
  71. Chilgren RA, Quie PG, Meuwissen HJ, Hong R. Chronic mucocutaneous candidiasis, deficiency of delayed hypersensitivity, and selective local antibody defect. *Lancet*. 1967;290(7518):688-693.
  72. Lilic D, Calvert JE, Cant AJ, Abinun M, Spickett GP. Chronic mucocutaneous candidiasis. II. Class and subclass of specific antibody responses in vivo and in vitro. *Clin Exp Immunol*. 1996;105(2):213-219.
  73. Boisson-Dupuis S, Kong XF, Okada S, et al. Inborn errors of human STAT1: allelic heterogeneity governs the diversity of immunological and infectious phenotypes. *Curr Opin Immunol*. 2012;24(4):364-378.
  74. Siegel AM, Heimall J, Freeman AF, et al. A critical role for STAT3 transcription factor signaling in the development and maintenance of human T cell memory. *Immunity*. 2011;35(5):806-818.
  75. Cheng MH, Anderson MS. Monogenic autoimmunity. *Annu Rev Immunol*. 2012;30:393-427.
  76. Husebye ES, Perheentupa J, Rautemaa R, Kämpe O. Clinical manifestations and management of patients with autoimmune polyendocrine syndrome type I. *J Intern Med*. 2009;265(5):514-529.
  77. Crow YJ. Type I interferonopathies: a novel set of inborn errors of immunity. *Ann N Y Acad Sci*. 2011;1238:91-98.
  78. Crow YJ, Manel N. Aicardi-Goutières syndrome and the type I interferonopathies. *Nat Rev Immunol*. 2015;15(7):429-440.
  79. Aicardi J, Goutières F. Systemic lupus erythematosus or Aicardi-Goutières syndrome? *Neuropediatrics*. 2000;31(3):113.
  80. Chandesris MO, Azarine A, Ong KT, et al. Frequent and widespread vascular abnormalities in human signal transducer and activator of transcription 3 deficiency. *Circ Cardiovasc Genet*. 2012;5(1):25-34.
  81. Romain M, Taleb S, Dalloz M, et al. Overexpression of SOCS3 in T lymphocytes leads to impaired interleukin-17 production and severe aortic aneurysm formation in mice—brief report. *Arterioscler Thromb Vasc Biol*. 2013;33(3):581-584.
  82. Xin B, Jones S, Puffenberger EG, et al. Homozygous mutation in SAMHD1 gene causes cerebral vasculopathy and early onset stroke. *Proc Natl Acad Sci USA*. 2011;108(13):5372-5377.
  83. Hsia CC, Sun TT, Wang YY, Anderson LM, Armstrong D, Good RA. Enhancement of formation of the esophageal carcinogen benzylnitrosamine from its precursors by *Candida albicans*. *Proc Natl Acad Sci USA*. 1981;78(3):1878-1881.
  84. Baron S, Tyring SK, Fleischmann WR Jr, et al. The interferons. Mechanisms of action and clinical applications. *JAMA*. 1991;266(10):1375-1383.
  85. Codarri L, Gyölvési G, Tosevski V, et al. ROR $\gamma$ t drives production of the cytokine GM-CSF in helper T cells, which is essential for the effector phase of autoimmune neuroinflammation. *Nat Immunol*. 2011;12(6):560-567.
  86. El-Behi M, Ciric B, Dai H, et al. The encephalitogenicity of T(H)17 cells is dependent on IL-1- and IL-23-induced production of the cytokine GM-CSF. *Nat Immunol*. 2011;12(6):568-575.
  87. Shahar E, Kriboy N, Pollack S. White cell enhancement in the treatment of severe candidosis. *Lancet*. 1995;346(8980):974-975.
  88. Vazquez JA, Sobel JD. Mucosal candidiasis. *Infect Dis Clin North Am*. 2002;16(4):793-820.





2016 127: 3154-3164

doi:10.1182/blood-2015-11-679902 originally published  
online April 25, 2016

## Heterozygous *STAT1* gain-of-function mutations underlie an unexpectedly broad clinical phenotype

Julie Toubiana, Satoshi Okada, Julia Hiller, Matias Oleastro, Macarena Lagos Gomez, Juan Carlos Aldave Becerra, Marie Ouachée-Chardin, Fanny Fouyssac, Katta Mohan Girisha, Amos Etzioni, Joris Van Montfrans, Yildiz Camcioglu, Leigh Ann Kerns, Bernd Belohradsky, Stéphane Blanche, Aziz Bousfiha, Carlos Rodriguez-Gallego, Isabelle Meyts, Kai Kisand, Janine Reichenbach, Ellen D. Renner, Sergio Rosenzweig, Bodo Grimbacher, Frank L. van de Veerdonk, Claudia Traidl-Hoffmann, Capucine Picard, Laszlo Marodi, Tomohiro Morio, Masao Kobayashi, Desa Lilic, Joshua D. Milner, Steven Holland, Jean-Laurent Casanova and Anne Puel

---

Updated information and services can be found at:

<http://www.bloodjournal.org/content/127/25/3154.full.html>

Articles on similar topics can be found in the following Blood collections

[Clinical Trials and Observations](#) (4352 articles)

[Free Research Articles](#) (3921 articles)

[Immunobiology](#) (5391 articles)

[Pediatric Hematology](#) (466 articles)

---

Information about reproducing this article in parts or in its entirety may be found online at:

[http://www.bloodjournal.org/site/misc/rights.xhtml#repub\\_requests](http://www.bloodjournal.org/site/misc/rights.xhtml#repub_requests)

Information about ordering reprints may be found online at:

<http://www.bloodjournal.org/site/misc/rights.xhtml#reprints>

Information about subscriptions and ASH membership may be found online at:

<http://www.bloodjournal.org/site/subscriptions/index.xhtml>