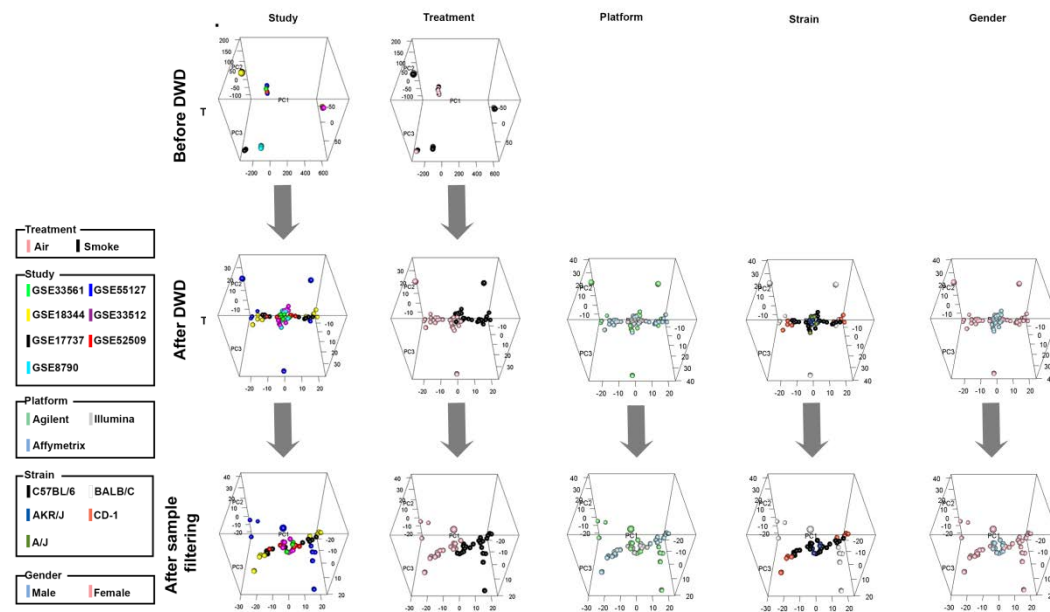


# Supplemental Figures

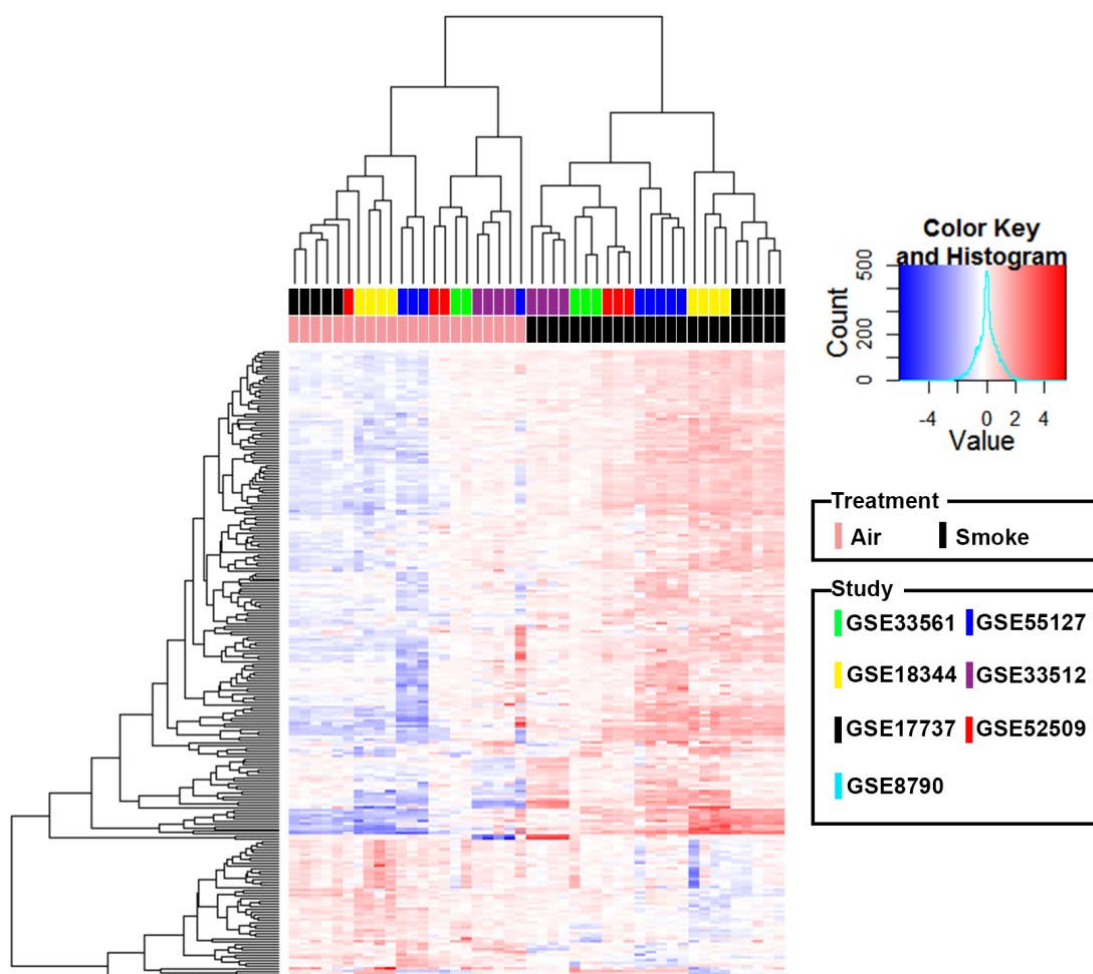


## SUPPLEMENTAL FIGURE 1. Combining datasets.

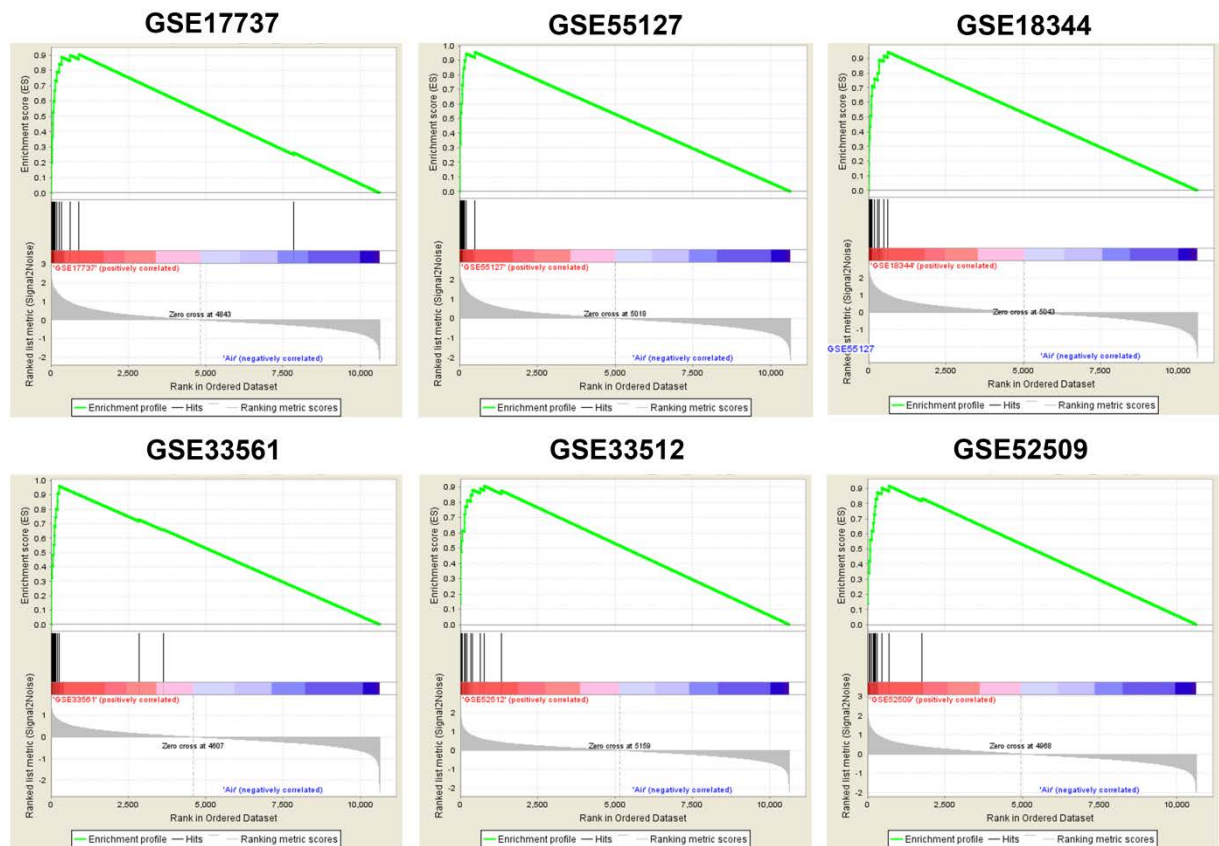
**Upper panel:** Principal Components Analysis (PCA) of samples before the batch effect removal procedure (DWD) was performed.

**Middle panel:** PCA of samples after the DWD.

**Lower panel:** PCA of samples after removing GSE8790 and samples from 2 control mice that clustered with the samples obtained from smoke-exposed mice.



**SUPPLEMENTAL FIGURE 2. 234 genes differentially expressed between smoke-exposed and control mice with a fold change of at least 2 in at least 1 of the models.**



**SUPPLEMENTAL FIGURE 3. Enrichment plots of the COPD-related gene set.**

The gene set containing 15 genes was tested across the 6 models. Control group is marked as “Air”; smoke-exposed groups are marked by their GEO IDs accordingly.

**SUPPLEMENTAL FIGURE 4. High quality version of human and mouse networks found in figures 2 and 4**

FILE: Figure\_S4\_Networks\_Mouse\_and\_Human