

Mechanisms of the Development of Allergy (MeDALL): Introducing novel concepts in allergy phenotypes



Josep M. Anto, PhD,^{a,b,c,d,*} Jean Bousquet, MD,^{e,f,g,*} Mubeccel Akdis, MD,^h Charles Auffray, MD,ⁱ Thomas Keil, MD,^j Isabelle Momas, PhD,^k Dirkje S. Postma, MD,^l Rudolf Valenta, MD,^m Magnus Wickman, MD,ⁿ Anne Cambon-Thomsen, MD,^o Tari Haahtela, MD,^p Bart N. Lambrecht, MD,^q Karin C. Lodrup Carlsen, MD,^r Gerard H. Koppelman, PhD,^s Jordi Sunyer, MD,^{a,b,c,d} Torsten Zuberbier, MD,^t Isabelle Annesi-Maesano, MD,^u Albert Arno, MD,^v Carsten Bindslev-Jensen, PhD,^w Giuseppe De Carlo,^x Francesco Forastiere, MD,^y Joachim Heinrich, PhD,^z Marek L. Kowalski, MD,^{aa} Dieter Maier, PhD,^{bb} Erik Melén, MD,^{cc} Henriette A. Smit, PhD,^{dd} Marie Standl, PhD,^z John Wright, FRPC,^{ee} Anna Asarnoj, MD,^{ff} Marta Benet, MSc,^a Natalia Ballardini, MD,^{n,gg} Judith Garcia-Aymerich, MD,^{a,b,c,d} Ulrike Gehring, PhD,^{hh} Stefano Guerra, MD,^a Cynthia Hohmann, Dipl Psych,ⁱⁱ Inger Kull, PhD,^{n,ji} Christian Lupinek, MD,^m Mariona Pinart, PhD,^a Ingebjorg Skrindo, MD,^r Marit Westman, MD,^{kk} Delphine Smagghe, MSc,^{ll} Cezmi Akdis, MD,^h Niklas Andersson, MSc,^{mmm} Claus Bachert, MD,ⁿⁿ Stephane Ballereau, PhD,ⁱ Ferran Ballester, MD,^{oo} Xavier Basagana, PhD,^a Anna Bedbrook, MSc,^f Anna Bergstrom, PhD,^{mmm} Andrea von Berg, MD,^{pp} Bert Brunekreef, PhD,^{dd,hh} Emilie Burte, MSc,^g Kai-Hakon Carlsen, MD,^{qq} Leda Chatzi, MD,^{rr} Jonathan M. Coquet, PhD,^q Mirela Curin, PhD,^m Pascal Demoly, MD,^{ss} Esben Eller, MD,^w Maria Pia Fantini, MD,^{tt} Leena von Hertzen, PhD,^p Vergard Hovland, MD,^{qq} Benedicte Jacquemin, MD,^a Jocelyne Just, MD,^{uu} Theresa Keller, MSc,ⁱⁱ Renata Kiss, MSc,ⁿⁿ Manolis Kogevinas, MD,^{a,b,c,d} Sibylle Koletzko, MD,^{vv} Susanne Lau, MD,^{www} Irina Lehmann, PhD,^{xx} Nicolas Lemonnier, PhD,^{yy} Mika Mäkelä, MD,^p Jordi Mestres, PhD,^{zz} Peter Mowinckel, MSc,^{qq} Rachel Nadif, PhD,^g Martijn C. Nawijn, PhD,^s Johan Pellet, MSc,ⁱ Isabelle Pin, MD,^{aaa} Daniela Porta, MD,^y Fanny Rancière, PhD,^k Emmanuelle Rial-Sebbag, PhD,^o Yvan Saeys, PhD,^q Martijn J. Schuijs, MSc,^q Valerie Siroux, PhD,^{bbb} Christina G. Tischer, PhD,^z Mathies Torrent, MD,^{a,ccc} Raphaëlle Varraso, PhD,^g Kalus Wenzel, MD,^{bb} and Cheng-Jian Xu, PhD^s

Barcelona, Valencia, and Menorca, Spain; Montpellier, Villejuif, Montigny le Bretonneux, Lyon, Paris, Toulouse, and Grenoble, France; Davos, Switzerland; Berlin, Wuerzburg, Neuherberg, Munich, Wesel, and Leipzig, Germany; Groningen and Utrecht, The Netherlands; Vienna, Austria; Stockholm, Sweden; Helsinki, Finland; Ghent and Brussels, Belgium; Oslo, Norway; Odense, Denmark; Rome and Bologna, Italy; Lodz, Poland; Bradford and London, United Kingdom; and Crete, Greece

Asthma, rhinitis, and eczema are complex diseases with multiple genetic and environmental factors interlinked through IgE-associated and non-IgE-associated mechanisms. Mechanisms of the Development of ALLergy (MeDALL; EU FP7-CP-IP; project no: 261357; 2010-2015) studied the complex links of allergic diseases at the clinical and mechanistic levels by linking epidemiologic, clinical, and mechanistic research, including *in vivo* and *in vitro* models. MeDALL integrated 14 European birth cohorts, including 44,010 participants and 160 cohort follow-ups between pregnancy and age 20 years. Thirteen thousand children were prospectively followed after puberty by using a newly standardized MeDALL Core Questionnaire. A microarray developed for allergen molecules with increased IgE sensitivity was obtained for 3,292 children. Estimates of air pollution exposure from previous studies were available for 10,000 children. Omics data included those from historical genome-wide association studies (23,000 children) and DNA methylation (2,173), targeted multiplex biomarker (1,427), and transcriptomic (723) studies. Using classical epidemiology and machine-learning methods in 16,147 children aged 4 years and 11,080 children aged 8 years, MeDALL showed the multimorbidity of eczema, rhinitis, and asthma and estimated

that only 38% of multimorbidity was attributable to IgE sensitization. MeDALL has proposed a new vision of multimorbidity independent of IgE sensitization, and has shown that monosensitization and polysensitization represent 2 distinct phenotypes. The translational component of MeDALL is shown by the identification of a novel allergic phenotype characterized by polysensitization and multimorbidity, which is associated with the frequency, persistence, and severity of allergic symptoms. The results of MeDALL will help integrate personalized, predictive, preventative, and participatory approaches in allergic diseases. (*J Allergy Clin Immunol* 2017;139:388-99.)

Key words: Asthma, atopic dermatitis, allergy, rhinitis

Asthma, rhinitis, and eczema are among the most common chronic diseases. One of the most challenging characteristics is their complexity, with multiple genetic and environmental factors interlinked through IgE-associated and non-IgE-associated mechanisms.¹ These diseases generally begin very early in life and can persist into adult life.² As in patients with other chronic

diseases, they often occur in the same subjects (multimorbidity) more often than expected by chance.³

During the last decade, increasing recognition of the challenges associated with the complexity of many chronic diseases has stimulated interest in applying *systems biology* approaches to biomedical research.⁴ Personalized, predictive, preventative, and participatory (P4) medicine has been advocated to integrate

personalized, predictive, preventative, and participatory approaches.⁵

An important milestone in this process was that the 7th Framework Programme of the European Union (EU) promoted research to develop systems medicine to better understand chronic diseases. Mechanisms of the Development of ALLergy (MeDALL; EU FP7-CP-IP; project no: 261357; 2010-2015)

From ^aISGloBAL, Centre for Research in Environmental Epidemiology (CREAL), Barcelona; ^bIMIM (Hospital del Mar Research Institute), Barcelona; ^cCIBER Epidemiología y Salud Pública (CIBERESP), Barcelona; ^dUniversitat Pompeu Fabra (UPF), Barcelona; ^eUniversity Hospital, Montpellier; ^fMACVIA-France, Contre les MALadies Chroniques pour un Vieillissement Actif en France, European Innovation Partnership on Active and Healthy Ageing Reference Site, Montpellier; ^gINSERM, U1168, Ageing and chronic diseases Epidemiological and public health approaches, Villejuif, and UVSQ, UMR-S 1168, Univ Versailles St-Quentin-en-Yvelines, Montigny le Bretonneux; ^hthe Swiss Institute of Allergy and Asthma Research (SIAF), University of Zurich, Davos; ⁱthe European Institute for Systems Biology and Medicine, CNRS-ENS-UCBL, Université de Lyon; ^jthe Institute of Social Medicine, Epidemiology and Health Economics, Charité-Universitätsmedizin Berlin, Berlin, and the Institute for Clinical Epidemiology and Biometry, University of Wuerzburg; ^kthe Department of Public health and health products, Paris Descartes University-Sorbonne Paris Cité, EA 4064, and Paris Municipal Department of Social Action, Childhood, and Health, Paris; ^lthe University of Groningen, University Medical Center Groningen; ^mthe Division of Immunopathology, Department of Pathophysiology and Allergy Research, Center for Pathophysiology, Infectiology and Immunology, Medical University of Vienna; ⁿSachs' Children and Youth Hospital, Södersjukhuset, Stockholm, and Institute of Environmental Medicine, Karolinska Institutet, Stockholm; ^oUMR Inserm U1027 and Université de Toulouse III Paul Sabatier, Toulouse; ^pthe Skin and Allergy Hospital, Helsinki University Hospital; ^qVIB Inflammation Research Center, Ghent University; ^rthe Department of Paediatrics, Oslo University Hospital, and the Faculty of Medicine, Institute of Clinical Medicine, University of Oslo; ^sthe Department of Pediatric Pulmonology and Pediatric Allergology, Beatrix Children's Hospital, GRIAC Research Institute, University Medical Center Groningen, University of Groningen; ^tAllergy-Centre-Charité at the Department of Dermatology, Charité-Universitätsmedizin Berlin, and Secretary General of the Global Allergy and Asthma European Network (GA²LEN); ^uEPAR U707 INSERM, Paris and EPAR UMR-S UPMC, Paris VI; ^vOnmedic Networks, Barcelona; ^wthe Department of Dermatology and Allergy Centre, Odense University Hospital; ^xEFA European Federation of Allergy and Airways Diseases Patients' Associations, Brussels; ^ythe Department of Epidemiology, Regional Health Service Lazio Region, Rome; ^zthe Institute of Epidemiology I, Helmholtz Zentrum München—German Research Center for Environmental Health, Neuherberg; ^{aa}the Department of Immunology, Rheumatology and Allergy, Medical University of Lodz; ^{ab}Biomax Informatics AG, Munich; ^{ac}Sachs' Children and Youth Hospital, Södersjukhuset, Stockholm, and Institute of Environmental Medicine, Karolinska Institutet, Stockholm; ^{ad}the Julius Center of Health Sciences and Primary Care, University Medical Center Utrecht, University of Utrecht; ^{ae}the Bradford Institute for Health Research, Bradford Royal Infirmary; ^{af}the Clinical Immunology and Allergy Unit, Department of Medicine Solna, Karolinska Institutet, Stockholm, and Astrid Lindgren Children's Hospital, Department of Pediatric Pulmonology and Allergy, Karolinska University Hospital, Stockholm; ^{ag}St John's Institute of Dermatology, King's College London; ^{ah}the Institute for Risk Assessment Sciences, Utrecht University; ^{ai}the Institute of Social Medicine, Epidemiology and Health Economics, Charité-Universitätsmedizin, Berlin; ^{aj}the Department of Clinical Science and Education, Södersjukhuset, Karolinska Institutet, Stockholm; ^{ak}the Department of Clinical Science, Intervention and Technology, Karolinska Institutet, Stockholm, and Department of ENT diseases, Karolinska University Hospital, Stockholm; ^{al}Inserm Transfert, Paris; ^{am}the Institute of Environmental Medicine, Karolinska Institutet, Stockholm; ^{an}the ENT Department, Ghent University Hospital; ^{ao}the Environment and Health Area, Centre for Public Health Research (CSISP); CIBERESP, Department of Nursing, University of Valencia; ^{ap}the Research Institute, Department of Pediatrics, Marien-Hospital, Wesel; ^{aq}the Department of Paediatrics, Oslo University Hospital and University of Oslo; ^{ar}the Department of Social Medicine, Faculty of Medicine, University of Crete; ^{as}the Department of Respiratory Diseases, Montpellier University Hospital; ^{at}the Department of Medicine and Public Health, Alma Mater Studiorum—University of Bologna; ^{au}the Allergology Department, Centre de l'Asthme et des Allergies, Hôpital d'Enfants Armand-Trousseau (APHP), and Sorbonne Universités, UPMC Univ Paris Institut Pierre Louis d'Epidémiologie et de Santé Publique, Equipe EPAR, Paris; ^{av}the Division of Paediatric Gastroenterology and Hepatology, Ludwig-Maximilians-Universität of Munich; ^{aw}the Department for Pediatric Pneumology and


Immunology, Charité Medical University, Berlin; ^{ax}the Department of Environmental Immunology/Core Facility Studies, Helmholtz Centre for Environmental Research—UFZ, Leipzig; ^{ay}Institut Albert Bonniot à Grenoble (Institute for Advanced Biosciences), Grenoble; ^{az}Chemotargets SL and Chemogenomics Laboratory, GRIB Unit, IMIM-Hospital del Mar and University Pompeu Fabra, Barcelona; ^{baa}Département de pédiatrie, CHU de Grenoble; ^{bbb}Inserm, U823, Grenoble; and ^{ccc}ib-salut, Area de Salut de Menorca.

*These authors contributed equally to this work.

Disclosure of potential conflict of interest: J. Bousquet has received personal fees from Almirall, AstraZeneca, Chiesi, GlaxoSmithKline, Meda, Menarini, Merck, MSD, Novartis, Sanofi-Aventis, Takeda, Teva, and Uriach. M. Akdis has received grants from the European Union Research Grant 7th Framework Project Medall, the European Union Research Grant 7th Framework Project Predicta, and the Swiss National Science Foundation. C. Auffray has received a grant from the European Union. D. Postma has received grants from AstraZeneca, Chiesi, Genentech, GSK, and Roche and has received consultant fees from AstraZeneca, Chiesi, GSK, Boehringer Ingelheim, Takeda, and TEVA. R. Valenta has received grants from Biomay and Viravaxx AG and has received personal fees from Biomay AG, Thermofisher, and Fresenius Medical Care. G. Koppelman has received grants from the Dutch Lung Foundation, TEVA, and Ubbo Emmius Foundation. T. Zuberbier has consultant arrangements with AstraZeneca, AbbVie, ALK, Almirall, Astellas, Bayer Health Care, Bencard, Berlin Chemie, FAES, HAL, Henkel, Kryolan, Leti, L'Oreal, Meda, Menarini, Merck, MSD, Novartis, Pharmasqure, Pfizer, Quintiles, Sanofi, Serono, Stallergenes, Takeda, Teva, and UCB and has the following organizational affiliations: Committee member, WHO-Initiative "Allergic Rhinitis and its Impact on Asthma" (ARIA); Member of the Board, German Society for Allergy and Clinical Immunology (DGAKI); Head, European Centre for Allergy Research Foundation (ECARF); Secretary General, Global Allergy and Asthma European Network (GA²LEN); Member, Committee on Allergy Diagnosis and Molecular Allergology, World Allergy Organisation (WAO). G. de Carlo has received grants from AirLiquide, ALK Abello, AstraZeneca, Boehringer Ingelheim, Chiesi, GlaxoSmithKline, Novartis, TEVA, and Stallergenes; EFA works closely with the scientific societies European Academy of Allergology and Clinical Immunology (EAACI) and European Respiratory Society (ERS), including the ERS foundation, European Lung Foundation, who receive funding from the pharmaceutical industry; EFA was a partner of the U-BIOPRED from the IMI and is currently partner in the FP7 EARIP project and Horizon2020 myAirCoach project where industry they are partners. D. Maier has received a grant from the European Commission. C. Lupinek has received personal fees from Thermo Fisher. J. Just has received a grant from Novartis; has received personal fees from Novartis, Stallergenes Green, ALK Abello, AstraZeneca, and Thermofisher. S. Koletzko has board memberships with MSD, Nestle, Danone, Merck, and Boehringer Ingelheim; has consultant arrangements with Boehringer Ingelheim, Danone, and Menarini; has received grants from Nestle Nutrition, Mead Johnson, ThermoFisher, Euroimmun, INOVA, and R-Biopharm; has received payment for lectures from MSD, Danone, Merck, Nestle Nutrition Institute, Euroimmun, Thermo-Fischer (Phadia), Abbvie, Schär, Hipp, and Falk; and has received travel support from Mead Johnson. J. Pellet has received a grant from the European Union. I. Pin has received personal fees from Novartis and has received travel fees from Novartis, GSK, and AstraZeneca. V. Siroux has received personal fees from TEVA, AstraZeneca, and Novartis. The rest of the authors declare that they have no relevant conflicts of interest.

Received for publication October 14, 2016; revised December 4, 2016; accepted for publication December 16, 2016.

Corresponding author: Josep M. Anto, ISGlobal Barcelona, Health Services Research Unit, IMIM, Barcelona, Spain. E-mail: jmanto@isglobal.org. Or: Jean Bousquet, CHU Montpellier, 34295 Montpellier Cedex 5, France. E-mail: jean.bousquet@orange.fr.

 The CrossMark symbol notifies online readers when updates have been made to the article such as errata or minor corrections

0091-6749/\$36.00

© 2016 American Academy of Allergy, Asthma & Immunology
<http://dx.doi.org/10.1016/j.jaci.2016.12.940>

Terms in boldface and italics are defined in the glossary on page 390.

Abbreviations used

BAMSE:	Barn/Children Allergy/Asthma Milieu Stockholm Epidemiologic
CHI3L1:	Chitinase-3-like protein 1
CQ:	Core Questionnaire
DARC:	Danish Allergy Research Centre
ECA:	Environment and Childhood Asthma
EDEN:	Etude des Déterminants pré et post natus du développement et de la santé de l'Enfant
EGEA:	Epidemiological study on the Genetics and Environment of Asthma, Bronchial Hyperresponsiveness and Atopy
ENRIECO:	Environmental Health Risks in European Birth Cohorts
EU:	European Union
GA ² LEN:	Global Allergy and Asthma European Network
GINIplus:	German Infant Study on the Influence of Nutrition Intervention PLUS Environmental and Genetic Influences on Allergy Development
GWAS:	Genome-wide association study
IL-1RL1:	IL-1 receptor-like 1
INMA:	Infancia y Medio Ambiente
LISAplus:	Life-Style Factors on the Development of the Immune System and Allergies in East and West Germany PLUS the Influence of Traffic Emissions and Genetics
MAS:	German Multicenter Allergy Study
MeDALL:	Mechanisms of the Development of ALLergy
NIH:	National Institutes of Health
P4:	Personalized, predictive, preventative, and participatory
PARIS:	Pollution and Asthma Risk: an Infant Study
PIAMA:	Prevention and Incidence of Asthma and Mite Allergy
RHEA:	Mother-Child Cohort in Crete
ROBBIC:	Rome and Bologna Birth Cohorts

attempted to better understand the complex links of allergic diseases at the clinical and mechanistic levels.^{1,6} Building on previous initiatives, MeDALL established a network of 14 European birth cohorts, including information from 44,010 participants in 160 cohort follow-ups between pregnancy and age 20 years, as well as information from 398 clinical and phenotypic attributes and more than 30,000 biological samples. MeDALL completed its project in May 2015.⁷

TABLE I. Steps of the MeDALL systems approach to allergic diseases

1. Identification of “classical” phenotypes using hypothesis-driven approaches and “novel” phenotypes using data-driven approaches in existing birth cohorts
2. Discovery of the relevant mechanisms in IgE-associated allergic diseases in existing longitudinal birth cohorts
3. Validation and redefinition of the “classical” and “novel” phenotypes of IgE-associated allergic diseases
4. Translational integration of systems biology outcomes by means of genomics, transcriptomics, epigenomics, and proteomics into health care, including societal aspects

This review updates the final MeDALL report^{3,7} with new results and already reported data.

A SYSTEMS APPROACH TO ALLERGIC DISEASES

A new paradigm encouraging a convergence of omics, systems medicine, the digital revolution, and consumer-driven health care is P4 medicine, which aims at advancing medical care through adoption of a systems-based approach.⁵ However, the P4 practical application is difficult in patients with multimorbid chronic diseases.^{8,9} A general hypothesis underlying the application of systems approaches in medicine is that the interplay between multiple genetic and environmental factors results in deregulation of complex molecular networks. The ultimate goals of systems medicine are to understand this complexity by using an integrative approach and to identify directions to investigate more efficient clinical diagnostics and therapies.¹⁰ Systems medicine approaches involve large-scale integration of existing knowledge with newly acquired multidimensional data, including biobanking and clinical, phenotypic, environmental, lifestyle, biologic, and omics data. There are opportunities and challenges for precision medicine in the treatment of allergic diseases.¹¹⁻¹³

MeDALL has been a pioneer in adopting a systems medicine approach to understand allergic diseases from early childhood to young adulthood^{1,6,7} by linking epidemiologic, clinical, and basic research (Table I)¹⁴ and including genome-wide association studies (GWASs) as well as transcriptomic, epigenetic, and targeted proteomic studies. This approach was possible due to the multidisciplinary nature of MeDALL.

GLOSSARY

AIR QUALITY: A description of whether air is clean or polluted. In the United States the Environmental Protection Agency calculates an Air Quality Index, which measures 5 major air pollutants regulated by the Clean Air Act: ground-level ozone, particulate matter, carbon monoxide, sulfur dioxide, and nitrogen dioxide.

EXPLORATORY FACTOR ANALYSIS: Factor analysis is a statistical method used to describe variability among observed correlated variables in terms of a potentially lower number of unobserved variables called factors. Exploratory factor analysis is a type of factor analysis to be used when the researcher has no *a priori* hypothesis about factors or patterns of measured variables.

HIERARCHICAL CLUSTERING: Grouping of observations together (clustering) that share common features or lack certain features. When the grouping arranges observations together first that are the most similar and then continues arranging observations by their degree of similarity,

the clustering is considered hierarchical. This analysis is often represented by a dendrogram (tree diagram).

IgE MICROARRAYS: Allergens obtained by using recombinant DNA technologies are tested in a multiplex system in which a serum sample is tested for reactivity to many individual allergens.

IN SILICO: The modeling of biological processes using computer software or simulation.

LAND USE MODEL: A multivariate regression model using monitored levels of the pollutant of interest as the dependent variable and variables such as traffic, topography, and other geographic variables as independent variables. Levels of pollution might then be predicted for specific locations.

SYSTEMS BIOLOGY: A field of investigation that uses quantitative systematic measurements of interactive components, as well as mathematical models to describe dynamic living systems.

TABLE II. Pooled MeDALL database (from Bousquet et al)⁷

- AMICS-M: Data from 482 integrated participants with up to 12 follow-ups
- BAMSE: Data from 4,089 integrated participants with up to 6 follow-ups
- BIB: Data from 13,565 (2,594 in MeDALL) integrated participants with up to 7 follow-ups
- DARC: Data from 562 integrated participants with up to 9 follow-ups
- ECA: Data from 3,754 integrated participants with up to 6 follow-ups
- EDEN: Data from 1,140 integrated participants with up to 6 follow-ups
- GINI: Data from 5,991 integrated participants with up to 8 follow-ups
- LISA: Data from 3,095 integrated participants with up to 9 follow-ups
- INMA-Gipuzkoa: Data from 406 integrated participants with up to 4 follow-ups
- INMA-Sabadell: Data from 772 integrated participants with up to 7 follow-ups
- INMA-Valencia: Data from 855 integrated participants with up to 6 follow-ups
- MAS: Data from 1,314 integrated participants with up to 19 follow-ups
- PARIS: Data from 1,549 integrated participants with up to 10 follow-ups
- PIAMA: Data from 3,963 integrated participants with up to 12 follow-ups
- RHEA: Data from 1,336 integrated participants with up to 6 follow-ups
- ROBBIC-Bologna: Data from 434 integrated participants with up to 5 follow-ups
- ROBBIC-Roma: Data from 694 integrated participants with up to 6 follow-ups

INNOVATIVE METHODOLOGICAL APPROACHES

Building on previous networks of birth cohorts

Long-term birth cohort studies are essential for understanding the life course and childhood predictors of allergy and the complex interplay between genes and environment (including *air quality*, lifestyle, and socioeconomic determinants).¹⁵ More than 150 cohorts focusing on asthma and allergy have been initiated in the world over the past 30 years.¹⁴ Since 2004, several research initiatives funded under the EU Framework Program for Research and Technological Development FP6-FP7 have attempted to identify, compare, and evaluate pooling data from existing European birth cohorts (Global Allergy and Asthma European Network [GA²LEN],^{16,17} FP6; Environmental Health Risks in European Birth Cohorts (ENRIECO),¹⁸ FP6; GABRIEL: A Multidisciplinary Study to Identify the Genetic and Environmental Causes of Asthma in the European Community [reference], FP7; CHICOS: Developing a Child Cohort Research Strategy for Europe, FP7; MeDALL, FP7; Early Genetics & Lifecourse Epidemiology [EAGLE]).^{19,20} In the United Kingdom, the Study Team for Early Life Asthma Research (STELAR)²¹ initiated a similar pooling of birth cohorts. The collaborative FP7 translational research project EuroPrevall started a multicenter birth cohort study, recruiting more than 12,000 newborns in 9 European countries in 2005-2009.^{22,23} The information gathered by these birth cohorts has already made a significant advance in our understanding of allergy and asthma, particularly in the first years of life.

The goal of MeDALL was to use the wealth of already existing European birth cohort data and facilitate the integration of historical and newly generated data in a harmonized format for future research. MeDALL pooled 14 European birth cohorts, including AMICS-Menorca²⁴; Barn/Children Allergy/Asthma

Milieu Stockholm Epidemiologic (BAMSE)²⁵; Born in Bradford (BIB)^{26,27}; the Danish Allergy Research Centre (DARC)²⁸; Environment and Childhood Asthma (ECA)²⁹; Etude des Déterminants pré et post natals du développement et de la santé de l'Enfant (EDEN)³⁰; German Infant Study on the Influence of Nutrition Intervention PLUS Environmental and Genetic Influences on Allergy Development (GINIplus)^{31,32}; Infancia y Medio Ambiente (INMA) Gipuzkoa, Sabadell, and Valencia³³; Life-Style Factors on the Development of the Immune System and Allergies in East and West Germany PLUS the Influence of Traffic Emissions and Genetics (LISApplus)³⁴; the German Multicenter Allergy Study (MAS)³⁵⁻³⁸; Pollution and Asthma Risk: an Infant Study (PARIS)³⁹; Prevention and Incidence of Asthma and Mite Allergy (PIAMA)⁴⁰; Mother-Child Cohort in Crete (RHEA)⁴¹; and Rome and Bologna Birth Cohorts (ROBBIC).⁴²

However, an important difficulty in data integration collected from the numerous existing birth cohort studies was the heterogeneity of questionnaires and data collection frameworks. Combining the data for a joint analysis in large international studies is not straightforward, and thus the harmonization of the available data to achieve comparability is one of the main challenges.

MeDALL approached this difficulty by following 2 steps. First, historical data from birth cohorts were harmonized to facilitate initial analysis at the beginning of the project. Second, a harmonized MeDALL Core Questionnaire (MeDALL-CQ) was developed to increase the number of questions that were identical in the questionnaires used by the different birth cohorts to guarantee the homogeneity of newly collected data.⁴³ After mapping existing databases in birth cohorts, MeDALL researchers agreed and evaluated 137 variable definitions for inferential compatibility. Two thirds of the definitions were evaluated as completely equivalent, 16% as only partially equivalent, and 16% as noncompatible. A major achievement of MeDALL was the development of the harmonized MeDALL-CQ, which has been used historically in the 14 cohorts and prospectively in 11 cohorts.⁴³ The questionnaire is available in paper form and in an electronic version.

Worldwide interest has been expressed in MeDALL-CQ, which will be included in future follow-up assessments of the Cincinnati Childhood Allergy and Air Pollution Study (CCAAPS) birth cohort⁴⁴ and of the large Japanese national birth cohort Japan Environment and Children's Study (JECS), which recently recruited 100,000 parent-child pairs (www.env.go.jp/en/chemi/hs/jecs/).

Development of a database of pooled cohorts using a harmonized MeDALL-CQ

A MeDALL knowledge-management platform was developed to empower all partners with the means of open sharing and access to all the data and information collected, as well as to all the experimental and computational procedures used during the course of the project, and ultimately their dissemination in the scientific and biomedical community. The MeDALL knowledge base integrates historical and newly collected data from 44,010 participants on 398 clinical and phenotypic attributes (harmonized from 7,495 individual cohort variables) and 160 different follow-ups at 25 different time points between pregnancy and age 20 years, as well as information about available samples (>30,000 samples from blood, plasma, serum, DNA, RNA, and leukocytes;

Table II).^{7,45} Samples are stored in individual biobanks of the different MeDALL partners.^{1,6,7} Omics data produced or made available within MeDALL include 23,000 participants with historical GWASs, 2,173 with DNA methylations, 1,427 with biomarkers, and 723 with transcription experiments, *IgE microarrays* (3,292 IgE-chips) and individual estimates of ambient air pollution exposure (10,000 children) made by using the *land use model* (European Study of Cohorts for Air Pollution Effects [ESCAPE]).⁴⁶⁻⁴⁹

The availability of longitudinal samples of the same subject is a unique resource. The MeDALL database with its new central database is the starting point for future common and sustainable research initiatives in asthma and allergy. It can be extended with other epidemiologic studies, such as birth and patient cohorts.

New allergen microarray technology

The “MeDALL allergen-chip” is a collection of 170 allergen molecules used for the reliable detection of IgE and other isotypes of allergen-specific antibody signatures showing a higher sensitivity than the traditional ImmunoCAP system and skin prick testing. The MeDALL chip was used in more than 3,000 children and, as described in the following sections, allowed improvement in the understanding of the allergic nature of asthma, rhinitis, and eczema in children.⁵⁰⁻⁵⁴

Developing a systems medicine approach

An important advantage of the multidisciplinary nature of MeDALL was the integration of new bioinformatics methods with the classical epidemiologic and statistical ones. Unsupervised statistical models, such as partitioning cluster analysis, were used as an unsupervised strategy to identify novel phenotypes, and an *in silico* model of multimorbidity was developed.⁵⁵ Another innovative approach in MeDALL was the use of omics data, including GWASs, DNA methylation, transcriptomics and targeted proteomics, with the advantage of expanding results from conventional cross-sectional analyses to longitudinal analyses at different ages in childhood. Systems medicine is evolving as a novel approach to understand the complex interplay between the environmental, genetic, molecular, and physiologic domains and how this interplay leads to complex chronic diseases. In MeDALL, we have contributed to paving the way to apply systems medicine to allergic diseases in children. MeDALL has included epidemiologic, clinical, and multiomics data together with cell and animal models to advance our understanding of allergic diseases in children. In MeDALL, we are still far from a complete integration of the different tools and data in a single model, but we have advanced in understanding the biological pathways that are related to the multimorbidity of asthma, eczema, and rhinitis, and how GWASs, epigenetics, and proteomics can be integrated to understand the role of some asthma genes (eg, chitinase-3–like protein 1 [*CHI3L1*] and IL-1 receptor–like 1 [*IL1RL1*]). The potential role of different disciplines in systems medicine is evolving, and expansion of the current epidemiologic methods to allow this type of integrative analysis is a current and future challenge.⁵⁶

A NEW VISION OF MULTIMORBIDITY IN ALLERGIC DISEASES

The term multimorbidity is more appropriate than comorbidity because the primary allergic disease is poorly known and the

classical allergic march does not apply to every child.⁵⁷ Several other allergy trajectories have been described since. The concept of multimorbidity of allergic diseases^{58,59} and links between rhinitis and asthma in allergic and nonallergic patients⁶⁰ have been known for years. However, MeDALL has been the first population-based study to assess the allergic multimorbidity of eczema, rhinitis, and asthma by using a dual approach, hypothesis driven⁶¹ and data driven (unsupervised cluster analyses),⁵⁵ quantifying the net excess of multimorbidity.⁶¹

Allergic phenotypes are highly heterogeneous. MeDALL carried out the first systematic review on allergic phenotypes and multimorbidity.⁶² Studies reporting phenotypes of IgE-associated diseases in children are heterogeneous and often lack objective measures. The knowledge on multimorbidity was mostly restricted to links between asthma and rhinitis, indicating that a more global view of multimorbidity is needed.

MeDALL used classical cross-sectional and longitudinal epidemiologic methods to perform a precise analysis of allergic multimorbidity.⁶¹ The study involved 16,147 children aged 4 years and 11,080 children aged 8 years in cross-sectional and longitudinal analyses from 12 MeDALL European birth cohorts. Coexistence of eczema, rhinitis, and asthma in the same child is more common than expected by chance alone, both in the presence and absence of IgE sensitization, suggesting that these diseases share causal mechanisms. Although IgE sensitization is independently associated with excess multimorbidity of eczema, rhinitis, and asthma, its presence accounted for only 38% of multimorbidity, suggesting that IgE sensitization can no longer be considered the only causal mechanism of multimorbidity for these diseases.

During the last years, unsupervised statistical learning techniques, such as *exploratory factor analysis* and *hierarchical clustering*, have been used to identify asthma phenotypes, with partly consistent results.⁶³ However, there is less experience in using machine-learning methods to understand the interrelationships between different allergic phenotypes.⁶⁴ MeDALL also used machine-learning methods, allowing an unsupervised approach to identify novel phenotypes.⁵⁵ The study involved 17,209 children at age 4 years and 14,585 children at age 8 years from 7 birth cohorts. At variance with previous studies that applied these methods to a single disease,⁶ we assessed asthma, rhinitis, and eczema together in the same models. At each age period, we performed partitioning cluster analysis, according to the distribution of 23 variables covering symptoms “ever” and “in the last 12 months”, doctor’s diagnosis, age of onset, and treatments of asthma, rhinitis, and eczema; IgE sensitization; weight; and height. The analysis used repeated latent class analysis and self-organizing maps.

Two groups were identified as the optimal way to cluster the data at both age periods and in all sensitivity analyses. The first (reference) group at 4 and 8 years of age (including 70% and 79% of children) was characterized by a low prevalence of symptoms and sensitization, whereas the second (symptomatic) group exhibited more frequent symptoms and sensitization. Ninety-nine percent of children with multimorbidities fell into the symptomatic group at both ages. At 4 and 8 years of age, at the population level, asthma, rhinitis, and eczema can be classified together as an allergic multimorbidity cluster. Future research, including time-repeated assessments and biological data, will help to understand the interrelationships between these diseases.⁶⁴ MeDALL use of machine-learning methods together

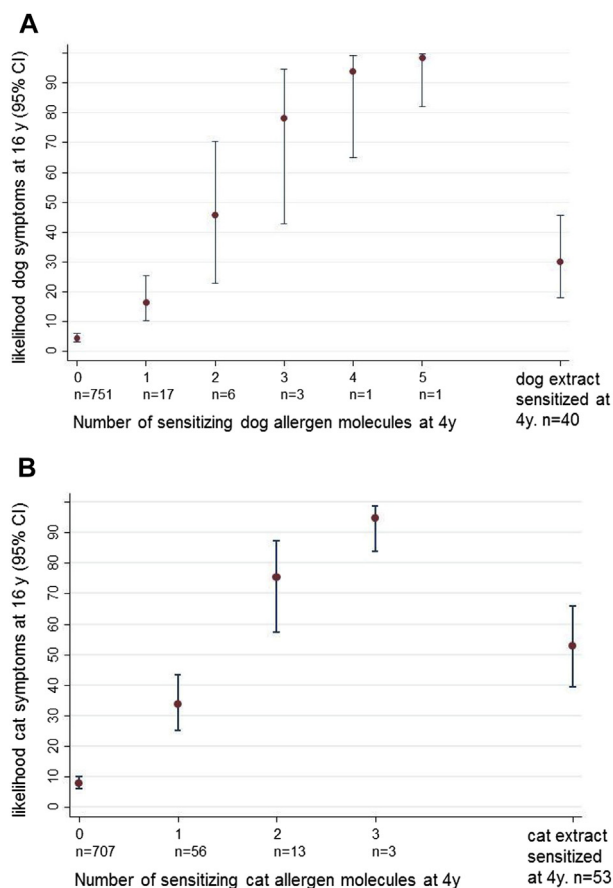


FIG 1. Likelihood of reporting symptoms to dog at 16 years of age depending on the number of IgE-reactive dog allergens and ImmunCAP dog extract sensitizations at age 4 years (**A**) and to cat at 16 years depending on the number of IgE-reactive cat allergens and ImmunCAP cat extract sensitization at age 4 years (**B**). Used with permission from Asarnoj et al.⁵³

with classical methods have contributed to show that efforts to elucidate more refined phenotypes should be integrated with a better understanding of multimorbidity.

MeDALL developed a bioinformatic model of multimorbidity of allergic diseases. An *in silico* study based on computational analysis of the topology of the protein interaction network was performed to characterize the molecular mechanisms of multimorbidity of asthma, eczema, and rhinitis. As a first step, proteins associated with either disease were identified by using data-mining approaches, and their overlap was calculated. Secondly, the functional interaction network was built, allowing the identification of cellular pathways involved in allergic multimorbidity. Finally, a network-based algorithm generated a ranked list of newly predicted multimorbidity-associated proteins. The results strongly support the existence of an allergic multimorbidity cluster between asthma, eczema, and rhinitis and suggest that type 2 signaling pathways represent a relevant multimorbidity mechanism of allergic diseases.

MONOSENSITIZATION AND POLYSENSITIZATION REPRESENT DISTINCT ALLERGY PHENOTYPES

The concept of monosensitization and polysensitization has been previously proposed⁶⁵⁻⁶⁸ but never formally evaluated

because of the lack of large numbers of samples in a population-based study and inadequate methods. This made it impossible to study a wide array of allergens, including cross-reactive molecules.⁶⁹ This became possible in MeDALL.

The BAMSE cohort (Sweden) was used as a model, and the same 779 children were tested at 4, 8, and 16 years of age.⁷⁰ Component-resolved diagnosis to birch proteins and cross-reactive pathogen-related class 10 protein by using the MeDALL chip allows the prediction of future allergy in young children.⁵² There was an increased risk of incidence and persistence of asthma, rhinitis, or both induced by birch pollen up to age 16 years with increasing levels of Bet v 1-specific IgE or increasing numbers of IgE-reactive pathogen-related class 10 proteins at age 4 years.

Sensitization to individual cat and dog allergen molecules can contribute differently to the development of allergy in childhood.⁵³ Cross-sectionally, cat/dog-polysensitized children had higher IgE levels and more frequent symptoms to cat and dog than monosensitized children. Polysensitization to 3 or more allergen molecules from cat or dog was a better longitudinal predictor of cat or dog symptoms than monosensitization (Fig 1).⁵³

Monosensitization and polysensitization represent 2 different phenotypes of IgE-associated diseases (Table III)^{53,65,67,68,71-84} in the MeDALL cohorts,³ in the PARIS cohort at 2 years of age,⁸¹ and in patient cohorts in children with inhalant⁸² or peanut⁷⁸ allergy.

In the Epidemiological Study on the Genetics and Environment of Asthma, Bronchial Hyperresponsiveness and Atopy (EGEA), the monosensitized and polysensitized MeDALL phenotypes³ were confirmed in adults.^{54,71} It was found that multimorbid polysensitized subjects had an onset of the disease at preschool age. Onset was also found to occur earlier than in mono sensitized individuals or in those with asthma or rhinitis and no IgE sensitization (Siroux, personal communication).

IgE sensitization should be considered a qualitative (IgE response) and quantitative trait (monosensitization and polysensitization) because important clinical and immunologic differences exist between monosensitized and polysensitized subjects (Table III). The integration of multimorbidities and polysensitization has resulted in a new classification framework of allergic diseases^{3,82} that could help improve the understanding of genetic and epigenetic mechanisms and pathways of allergy and improve the management of allergic diseases.

MeDALL identified a rare but severe allergy phenotype: the polysensitized multimorbid phenotype. Although multimorbidity is not always associated with allergy, studies in MeDALL⁷⁰ in children aged 2 years and in adults recruited in the PARIS⁸¹ and EGEA cohorts,^{54,71} respectively, as well as in subjects with peanut allergy from patient cohorts,⁷⁸ showed that subjects who are both polysensitized and multimorbid have a very high frequency of symptoms (persistent symptoms over time and more severe asthma symptoms) and higher total and specific IgE levels compared with other phenotypes.

FROM CLINICAL PHENOTYPES TO MECHANISMS

An important step in MeDALL was the study of the relevant mechanisms in patients with IgE-associated diseases. We developed a link with GWASs and transcriptomic, epigenetic, and

TABLE III. Differences between monosensitized and polysensitized subjects

	Monosensitized subjects	Polysensitized subjects	References
Symptoms			
Asymptomatic subjects	Often	Rarely	71
Common symptoms	Rhinitis (pollens) Asthma (mites)	Often multimorbid asthma and rhinitis	65,72
Family history of asthma or rhinitis	Often	Common	73
IgE			
Total IgE	Normal or increased levels	High levels, higher than in monosensitized subjects	65,72,74,75
Level of Specific IgE	Usually low (except for pollens)	High	53,67,72,76
T-cell response	Low IL-4 release	High IL-4 release	68,77
Severity of disease	Variable, can be severe	Often severe	78-80
Persistence of disease	Variable, can disappear	Often persistent	81-84

targeted proteomic studies. Although all analyses are not yet completed, some results are already available.

MeDALL omics data

Omic studies were completed by implementing a 2-stage approach (discovery plus validation) and optimizing completion of different omics measurements in the same participants to allow integrative analyses.

Among results published to date, a strong and consistent effect of maternal smoking on the child's whole-blood DNA methylome was observed from birth to 8 years in a large consortium, including MeDALL.⁸⁵ Another well-known environmental exposure associated with respiratory disease, traffic-related air pollution,⁸⁶ was also found to affect DNA methylation in offspring.⁸⁷ In the first published epigenome-wide air pollution study, NO₂ exposure during pregnancy was associated with differential offspring DNA methylation in mitochondria-related genes and in expression of genes involved in antioxidant defense pathways. Analyses of other traffic-related pollutants, such as particulate matter and soot, are ongoing. These studies underline the effect of early-life exposure to environmental factors, although it is currently not known whether these methylation changes and expression profiles are in the causal pathway toward asthma and lung function deterioration or just markers of exposure. Efforts are now directed to study the relevance of epigenetics and transcriptomics for disease development (asthma and allergy in particular). We also participated in a large international collaborative study on lung function maturation in childhood and found that circulating levels of club cell secretory protein at age 4 years predicted subsequent FEV₁ levels up to age 16 years,⁸⁸ supporting the value of this biomarker in lung health.

A targeted multiomics integrative analysis in childhood asthma was completed with genetic-epigenetic-protein data for the asthma biomarker YKL-40 (*CHI3L1*), in which, using data from multiple birth cohorts, we showed that *CHI3L1* genetic variation affects circulating YKL-40 by regulating its gene methylation profiles. A similar study was conducted to assess the interrelationship between IL-1RL1- α polymorphisms, IL-1RL1- α methylation, serum IL-1RL1- α levels and asthma. SNPs in IL-1RL1- α strongly regulate IL-1RL1- α methylation, lung mRNA expression, and serum IL-1RL1- α levels, although no relation of these (epi)genetic effects were observed in asthmatic patients. Similar integrative analyses were conducted for the other protein biomarkers measured in MeDALL, for which we have determined the genetic and epigenetic loci associated with their

circulating levels, identified their methylation quantitative trait loci, and, in turn, generated valuable information for integrative genomics studies.

Mechanistic experimental studies in animal studies and *in vitro* to complement MeDALL data

As part of the systems approach in the EU-FP7 program, MeDALL included *in vivo* and *in vitro* models to complement the epidemiologic and mechanistic studies in children. Transgenic mice, in which the T-cell receptor reacts to the relevant Der p 1 allergen of house dust mite, showed a novel IL-21-producing T-cell subset involved in asthma development.⁸⁹ Mice exposed to farm dust did not mount allergy and asthma to house dust mite because of a downregulation of epithelial cell activation and subsequent lack of dendritic cell activation. The pathway involved the ubiquitin-modifying enzyme A20. Genetic polymorphisms of A20 were associated with the risk of asthma in children and adults.⁹⁰

In human subjects, *in vitro* studies are essential to confirm mechanisms suggested by cohort studies. In allergic patients, the immune profile of the tonsils might represent a suitable lymphatic organ for direct immune interventions.⁹¹⁻⁹³ Cytokine-producing memory B-cell subsets can have proinflammatory, anti-inflammatory, and immune effector and immunoregulatory functions during allergen tolerance, such as allergen immunotherapy and high-dose allergen exposure.⁹⁴⁻⁹⁷ Regulatory T-cell counts are reduced during asthma exacerbations as markers of virus-induced asthma exacerbations.⁹⁸ The bronchial epithelial layer serves as the first site of exposure to inhaled allergens, dust particles, pollutants, or microorganisms. Tight junctions can be regulated by cytokines of the allergy pathways.^{99,100} Administration of CpG-DNA could restore impaired epithelial barriers.¹⁰¹

CLINICAL TRANSLATION OF MeDALL OUTCOMES

A crucial aspect in asthma clinical practice is the early identification of children at risk of having asthma at school age. Thus far, efforts to develop predictive algorithms have proved to be of little use. MeDALL performed a systematic review of existing prediction models to identify preschool children with asthma-like symptoms at risk of asthma at school age and showed that the prediction of asthma development is difficult,¹⁰² most likely because of interactions with viral infections. The experience of MeDALL suggests that opportunities to improve the performance and usability of asthma predictive models should be

explored further and that a more integrated use of biomarkers and multimorbidity is needed.

Improved prediction of asthma and its relationships with rhinitis and eczema could be achieved by a better understanding of the sex switch in prevalence during puberty. There seems to be a clear male predominance of asthma prevalence in children, switching to a female predominance in adolescence. Similarly, this has been confirmed for rhinitis prevalence in a recent worldwide systematic review of cross-sectional studies. The longitudinal sex-specific MeDALL analyses of 18,852 children participating in PIAMA, BAMSE, LISAPLUS, GINIPLUS, DARC, and MAS showed similar but less pronounced puberty-related changes in the sex-specific prevalence of asthma and allergic rhinitis. However, the hypothesis that further into adulthood the sex imbalance in the prevalence is switching to a clear female predominance of asthma and rhinitis will be examined with the next follow-up data collected by the MeDALL cohorts in adulthood.

Patient stratification is an important goal of the P4 medicine approach. Patient stratification aims at grouping patients into disease subgroups, where the specific pathologic processes involved are better defined (clinical/molecular phenotypes). This will lead to the development of targeted therapies optimizing the intervention to individual patients, thus achieving greater success in treating or curing the patient. Many phenotypes of asthma, rhinitis, or both exist. MeDALL has refined allergy phenotypes and showed that polysensitization and multimorbidity need to be considered together. However, the allergic phenotype is maturing from early childhood to puberty and beyond, in which associations between allergic diseases and risk factors change over time.¹⁰³ Thus it is important to assess the allergic phenotype across the life-cycle and to investigate stratification when allergic diseases will be fully developed between late adolescence and early adulthood.

Emerging technologies have been used successfully to stratify allergic patients. In the follow-up of birth cohort studies in young adults, the combination of a clinical decision support system for rhinitis¹⁰⁴ and asthma based on information technology (App and tablet)^{105,106} might provide an improved stratification of allergic patients. Moreover, the molecular sensitization profiles determined with the MeDALL chip might be the basis for stratification for allergen immunotherapy.¹⁰⁷

TRANSLATION OF MeDALL OUTCOMES INTO POLICIES

A specific focus of MeDALL was to translate research into political action through the World Health Organization Global Alliance Against Chronic Respiratory Diseases (GARD),¹⁰⁸⁻¹¹⁰ which was the model of AIRWAYS ICPs (Integrated Care Pathways for Airway Diseases),^{105,111-115} a new initiative of the European Innovation Partnership on Active and Healthy Ageing (EIP on AHA; Directorate General DG Santé, and DG CONNECT, EU).

The leading priority for the Polish Presidency of the Council of the EU (2011) was to reduce health inequalities across European societies, and, within its framework, to concentrate on the prevention and control of respiratory diseases in children to promote active and healthy aging.^{116,117} The clinical implications of MeDALL reinforce the priority of the EU and suggest solutions for implementation.

The first results of “the Finnish Allergy Programme 2008-2018,”¹¹⁸ which are supported by MeDALL data, indicate that

allergy burden can be reduced with relatively simple means. This has been endorsed by the Norwegian Allergy Health Programme and, along with the Finnish program, will serve as a platform for other countries (Oslo, November 2014).¹¹⁹

LESSONS LEARNED AND CONCLUSIONS

The MeDALL project reinforced previous collaborations among most of the largest and oldest ongoing European birth cohorts, enhancing harmonized population-based asthma and allergy research activities in Europe instead of continuing with fragmented individual approaches often lacking sufficient statistical power. The MeDALL project with its new central database is the starting point for conducting future common and sustainable asthma and allergy research initiatives. It can be extended easily by including other epidemiologic studies involving birth and patient cohorts.

A joint National Institutes of Health (NIH)–MeDALL workshop on birth cohorts in allergy and asthma was organized in September 2012 to update the knowledge provided by asthma/allergy birth cohorts, to identify the knowledge gaps and inconsistencies, and to suggest strategies for moving forward, including potential new study designs and the harmonization of existing asthma birth cohort data from both European and non-European countries.¹⁴

Strength of birth cohorts covered by MeDALL

Birth cohort pooling¹⁴ has strengthened the capacity of developing harmonized research protocols and multilingual instruments. MeDALL has achieved a certain number of goals (Table IV).*

Unmet needs of birth cohorts

There is no consistent evidence that clinical phenotypes correspond to genuine biological entities that reflect specific interactions between genetic susceptibility and environmental exposures. Exploration of new phenotypes is a useful task that might eventually result in a more refined classification of phenotypes that closely reflects the relevant pathogenic mechanisms. Future research needs were discussed during an NIH (National Heart, Lung and Blood Institute–National Institute of Allergy and Infectious Diseases)–MeDALL meeting and were proposed to include some issues already covered by MeDALL¹⁴:

1. A better characterization of phenotypes is required, including (I) a unique agreement on classification of asthma that can be applied to research, diagnosis, and treatment; (II) a better understanding of the interplay between asthma, allergy, and multimorbidity; (III) how allergic phenotypes interrelate across the lifecycle; and (IV) how respiratory allergy interacts with food allergy.¹²¹
2. Assessment of natural history and its determinants during and after childhood must be made. There is a well-established relationship between lung function impairment and chronic wheezing and asthma. The development of allergic diseases and trajectories of sensitization or lung function during childhood and adolescence depends on allergenic and nonallergenic exposure modulated by early-life events and puberty, as shown in birth¹²² and

*References 6,14,15,19,20,43,46,50-53,55,61,70,86,88,102,120.

TABLE IV. Goals of birth cohorts set during an NIH-MeDALL meeting¹⁴

	Goals	MeDALL achievements
1	Promote and facilitate harmonization of existing questionnaires and clinical data of ongoing birth cohorts	Harmonized questionnaire ⁴³ Clinical and biological data in database ^{7,15}
2	Propose future common questionnaires for different age groups and a common clinical study protocol to be used in new birth cohorts, as well as in new follow-ups of ongoing birth cohorts, which could facilitate interoperability and a better comparison with historical data	Deployment to Japan and the United States
3	Analyze pooled data from ongoing birth cohort studies in large databases to complement newly developed birth cohorts	In process
4	Broaden the diversity of environmental exposures in Europe (dietary, inhalant, and socioeconomic factors)	Several studies using pooled analyses ^{46,86}
5	Achieve statistical power needed to assess clinical or biological phenotypes, genetic or environmental determinants, and their interactions	Achieve the statistical power needed to assess clinical ^{55,61,102} or biological ^{50-53,70,88} phenotypes, genetic ^{19,20,88,120} or environmental ^{46,86} determinants, and their interactions
6	Assess the life course of subgroups of allergic and asthmatic phenotypes, including economic burden and quality of life of most phenotypes	Life course up to 16 y; plan for study in young adults
7	Determine sex-specific differences across different cultures and regions in Europe	Achieved (in preparation)
8	Facilitate research on underlying mechanisms explaining heterogeneous results among the cohorts	In process

patient^{82,84} cohorts. Moreover, links to new-onset and chronic asthma in adults and to chronic obstructive pulmonary disease are of great interest but need more integrated data.¹²³

3. Disease stratification that cannot be simply derived from birth cohorts alone must be addressed because patients with severe disease are insufficiently represented and severe patient cohorts need to be complemented by population-based cohorts.
4. Risk prediction of allergic diseases is required because current models lack sufficient accuracy to be of clinical use at the individual level.¹⁰²
5. Understanding the mechanisms of asthma and allergies from early life to those in elderly patients (ie, across the lifecycle) is an important requirement for a better understanding of phenotypes and their natural history (ie, expression, progression, and remission).¹⁰³ There is a close interaction between clinical and epidemiologic research, and research on mechanisms is of crucial importance.
6. Integration of all omics techniques with clinical, lifestyle, environment, and societal factors is needed in longitudinal ways to establish underlying mechanisms of allergic comorbidities. Omics data and identified genes and pathways need to be evaluated beyond association to understand disease causation and enable clinical implications.

Moreover, new studies should include novel concepts, such as biodiversity¹²⁴ or the microbiome,¹²⁵⁻¹²⁸ and new methods, such as next-generation sequencing, which has ignited an unprecedented pace of discovery in the biomedical sciences.^{129,130}

THE FUTURE

The European Commission considers MeDALL to be a success story. A summary can be found on the Horizon 2020 Web site. It will also be present in the future "Health Success Stories Brochure," which is scheduled to be launched within the next few months.

As in other similar projects, MeDALL has involved a huge multidisciplinary effort by a large international network of partners. MeDALL has been made possible thanks to previous consortiums (eg, GA²LEN, ENRIECO, and CHICOS),¹⁵ which have paved the way for pooling and integrating single-center and multicenter birth cohorts. Each of these consortiums has experienced the challenge of sustaining the network. MeDALL includes more than 44,000 participants recruited at birth for study of the most common chronic disease (allergy). The project is sufficiently powered for the assessment of primary diseases (asthma, rhinitis, and eczema) but limited for the study of multimorbidity (in particular at the early stages, 4 years)⁶¹ and, in turn, for the discovery of its molecular determinants. In studies of multimorbid noncommunicable diseases (eg, chronic obstructive pulmonary disease, cardiovascular diseases, and diabetes), the power of population cohorts will be sufficient to assess established diseases. However, cohorts are likely to fail in the identification of early multimorbid diseases and their causality and discovery of their biomarkers. Thus the MeDALL data are generalizable to multimorbid noncommunicable diseases across the lifecycle. Funding from the EU Structure and Cohesion Funds has been obtained by the Région Languedoc Roussillon in the MACVIA-LR frame^{114,115} to maintain the database until new funding from the EU or other sources is available for other projects.

The "severe" allergic phenotype is rare in the MeDALL birth cohorts, and it is possible that patients with the most severe disease will not be found (eg, those with severe corticosteroid-dependent asthma). It is likely that the phenotypes of allergic patients in population-based cohorts differ from those seen in primary or specialist care. The "mild" allergic phenotype is common in population-based cohorts, whereas it is exceptional in clinical care.

Despite the successful experience of MeDALL to integrate birth cohorts of asthma and allergy, we do need to escalate the level of integration. A new methodology should be proposed to combine the strengths and weaknesses of the birth cohorts, possibly enriching them with patient cohorts,^{82,131,132} registered

data in primary care,¹³³ clinical trial databases,¹³⁴ and/or Internet-based studies. In very young children, similar severe asthma phenotypes exist in patient cohorts of persistent recurrent wheezers¹³¹ and in cohorts in the general population,¹³⁵ suggesting the possibility of pooling both types of cohorts. However, ethical and legal issues are of great importance in pooling such studies.

Developing a systems medicine approach to complex diseases is a phenomenal challenge. MeDALL was used as a model of systems medicine and has initiated a common language for the assessment of all noncommunicable diseases.⁸

We thank the members of the Scientific and Ethics Advisory Boards who made invaluable comments during the project: P. Burney (Imperial College, London, United Kingdom), S. G. O. Johansson (Karolinska Institute, Stockholm, Sweden), J. Kiley (NHLBI, Bethesda, Md), P. Sterk (Amsterdam University, Amsterdam, The Netherlands), M. Van Hage (Karolinska Institute, Stockholm, Sweden), M. Yazdanbakhsh (Leiden University, Leiden, The Netherlands), K. Dierickx (Leuven, Belgium), T. Garani-Papadatos (Athens, Greece), and M. Sutrop (Riga, Estonia).

REFERENCES

- Bousquet J, Anto J, Auffray C, Akdis M, Cambon-Thomsen A, Keil T, et al. MeDALL (Mechanisms of the Development of ALLergy): an integrated approach from phenotypes to systems medicine. *Allergy* 2011;66:596-604.
- Martinez FD. Genes, environments, development and asthma: a reappraisal. *Eur Respir J* 2007;29:179-84.
- Bousquet J, Anto JM, Wickman M, Keil T, Valenta R, Haahtela T, et al. Are allergic multimorbidities and IgE polysensitization associated with the persistence or re-occurrence of foetal type 2 signalling? The MeDALL hypothesis. *Allergy* 2015;70:1062-78.
- Bousquet J, Anto JM, Sterk PJ, Adcock IM, Chung KF, Roca J, et al. Systems medicine and integrated care to combat chronic noncommunicable diseases. *Genome Med* 2011;3:43.
- Hood L, Friend SH. Predictive, personalized, preventive, participatory (P4) cancer medicine. *Nat Rev Clin Oncol* 2011;8:184-7.
- Antó JM, Pinart M, Akdis M, Auffray C, Bachert C, Basagaña X, et al. Understanding the complexity of IgE-related phenotypes from childhood to young adulthood: a Mechanisms of the Development of Allergy (MeDALL) seminar. *J Allergy Clin Immunol* 2012;129:943-54.e4.
- Bousquet J, Anto JM, Akdis M, Auffray C, Keil T, Momas I, et al. Paving the way of systems biology and precision medicine in allergic diseases: the MeDALL success story: Mechanisms of the Development of ALLergy; EU FP7-CP-IP; Project No: 261357; 2010-2015. *Allergy* 2016;71:1513-25.
- Bousquet J, Jorgensen C, Dauzat M, Cesario A, Camuzat T, Bourret R, et al. Systems medicine approaches for the definition of complex phenotypes in chronic diseases and ageing. From concept to implementation and policies. *Curr Pharm Des* 2014;20:5928-44.
- Marcum JA. Multimorbidity, P4 medicine and holism. *J Eval Clin Pract* 2016 [Epub ahead of print].
- Agustí A, Antó JM, Auffray C, Barbé F, Barreiro E, Dorca J, et al. Personalized respiratory medicine: exploring the horizon, addressing the issues. Summary of a BRN-AJRCCM workshop held in Barcelona on June 12, 2014. *Am J Respir Crit Care Med* 2015;191:391-401.
- Galli SJ. Toward precision medicine and health: opportunities and challenges in allergic diseases. *J Allergy Clin Immunol* 2016;137:1289-300.
- Muraro A, Fokkens WJ, Pietikainen S, Borrelli D, Agache I, Bousquet J, et al. European Symposium on Precision Medicine in Allergy and Airways Diseases: report of the European Union Parliament Symposium (October 14, 2015). *Allergy* 2016;71:583-7.
- Muraro A, Lemanske RF Jr, Hellings PW, Akdis CA, Bieber T, Casale TB, et al. Precision medicine in patients with allergic diseases: airway diseases and atopic dermatitis-PRACTALL document of the European Academy of Allergy and Clinical Immunology and the American Academy of Allergy, Asthma & Immunology. *J Allergy Clin Immunol* 2016;137:1347-58.
- Bousquet J, Gern JE, Martinez FD, Anto JM, Johnson CC, Holt PG, et al. Birth cohorts in asthma and allergic diseases: report of a NIAID/NHLBI/MeDALL joint workshop. *J Allergy Clin Immunol* 2014;133:1535-46.
- Bousquet J, Anto J, Sunyer J, Nieuwenhuijsen M, Vrijheid M, Keil T, et al. Pooling birth cohorts in allergy and asthma: European Union-funded initiatives—a MeDALL, CHICOS, ENRIECO, and GA²LEN joint paper. *Int Arch Allergy Immunol* 2013;161:1-10.
- Van Cauwenberge P, Watelet JB, Van Zele T, Bousquet J, Burney P, Zuberbier T. Spreading excellence in allergy and asthma: the GA² LEN (Global Allergy and Asthma European Network) project. *Allergy* 2005;60:858-64.
- Bousquet J, Burney PG, Zuberbier T, Cauwenberge PV, Akdis CA, Bindslev-Jensen C, et al. GA²LEN (Global Allergy and Asthma European Network) addresses the allergy and asthma 'epidemic.' *Allergy* 64:969-77.
- Vrijheid M, Casas M, Bergstrom A, Carmichael A, Cordier S, Eggesbø M, et al. European birth cohorts for environmental health research. *Environ Health Perspect* 2012;120:29-37.
- Paternoster L, Standl M, Chen CM, Ramasamy A, Bønnelykke K, Duijts L, et al. Meta-analysis of genome-wide association studies identifies three new risk loci for atopic dermatitis. *Nat Genet* 2012;44:187-92.
- Taal HR, St Pourcain B, Thiering E, Das S, Mook-Kanamori DO, Warrington NM, et al. Common variants at 12q15 and 12q24 are associated with infant head circumference. *Nat Genet* 2012;44:532-8.
- Custovic A, Ainsworth J, Arshad H, Bishop C, Buchan I, Cullinan P, et al. The Study Team for Early Life Asthma Research (STELAR) consortium 'Asthma e-lab': team science bringing data, methods and investigators together. *Thorax* 2015;70:799-801.
- Keil T, McBride D, Grimshaw K, Niggemann B, Xepapadaki P, Zannikos K, et al. The multinational birth cohort of EuroPrevall: background, aims and methods. *Allergy* 2010;65:482-90.
- DI McBride, Keil T, Grabenhenrich L, Dubakiene R, Drasutiene G, Flocchi A, et al. The EuroPrevall birth cohort study on food allergy: baseline characteristics of 12,000 newborns and their families from nine European countries. *Pediatr Allergy Immunol* 2012;23:230-9.
- García Algar O, Pichini S, Basagaña X, Puig C, Vall O, Torrent M, et al. Concentrations and determinants of NO₂ in homes of Ashford, UK and Barcelona and Menorca, Spain. *Indoor Air* 2004;14:298-304.
- Wickman M, Kull I, Pershagen G, Nordvall SL. The BAMSE project: presentation of a prospective longitudinal birth cohort study. *Pediatr Allergy Immunol* 2002;13(suppl 15):11-3.
- Wright J, Small N, Raynor P, Tuffnell D, Bhopal R, Cameron N, et al. Cohort Profile: the Born in Bradford multi-ethnic family cohort study. *Int J Epidemiol* 2013;42:978-91.
- Raynor P. Born in Bradford, a cohort study of babies born in Bradford, and their parents: protocol for the recruitment phase. *BMC Public Health* 2008;8:327.
- Host A, Halken S, Jacobsen HP, Christensen AE, Herskind AM, Plesner K. Clinical course of cow's milk protein allergy/intolerance and atopic diseases in childhood. *Pediatr Allergy Immunol* 2002;13(suppl 15):23-8.
- Lodrup Carlsen KC. The environment and childhood asthma (ECA) study in Oslo: ECA-1 and ECA-2. *Pediatr Allergy Immunol* 2002;13(suppl 15):29-31.
- Slama R, Thiebaugeorges O, Goua V, Aussel L, Sacco P, Bohet A, et al. Maternal personal exposure to airborne benzene and intrauterine growth. *Environ Health Perspect* 2009;117:1313-21.
- Laubereau B, Brockow I, Zirngibl A, Koletzko S, Gruebl A, von Berg A, et al. Effect of breast-feeding on the development of atopic dermatitis during the first 3 years of life—results from the GINI-birth cohort study. *J Pediatr* 2004;144:602-7.
- Berg AV, Krämer U, Link E, Bollrath C, Heinrich J, Brockow I, et al. Impact of early feeding on childhood eczema: development after nutritional intervention compared with the natural course—the GINIplus study up to the age of 6 years. *Clin Exp Allergy* 2010;40:627-36.
- Aguilera I, Guxens M, Garcia-Esteban R, Corbella T, Nieuwenhuijsen MJ, Foradada CM, et al. Association between GIS-based exposure to urban air pollution during pregnancy and birth weight in the INMA Sabadell Cohort. *Environ Health Perspect* 2009;117:1322-7.
- Heinrich J, Bolte G, Hölscher B, Douwes J, Lehmann I, Fahlbusch B, et al. Allergens and endotoxin on mothers' mattresses and total immunoglobulin E in cord blood of neonates. *Eur Respir J* 2002;20:617-23.
- Nickel R, Niggemann B, Gruber C, Kulig M, Wahn U, Lau S. How should a birth cohort study be organised? Experience from the German MAS cohort study. *Paediatr Respir Rev* 2002;3:169-76.
- Illi S, von Mutius E, Lau S, Nickel R, Grüber C, Niggemann B, et al. The natural course of atopic dermatitis from birth to age 7 years and the association with asthma. *J Allergy Clin Immunol* 2004;113:925-31.
- Nickel R, Illi S, Lau S, Sommerfeld C, Bergmann R, Kamin W, et al. Variability of total serum immunoglobulin E levels from birth to the age of 10 years. A prospective evaluation in a large birth cohort (German Multicenter Allergy Study). *Clin Exp Allergy* 2005;35:619-23.
- Illi S, von Mutius E, Lau S, Niggemann B, Gruber C, Wahn U. Perennial allergen sensitisation early in life and chronic asthma in children: a birth cohort study. *Lancet* 2006;368:763-70.

39. Clarisse B, Demattei C, Nikasinovic L, Just J, Daures JP, Momas I. Bronchial obstructive phenotypes in the first year of life among Paris birth cohort infants. *Pediatr Allergy Immunol* 2009;20:126-33.
40. Wijga A, Smit HA, Brunekreef B, Gerritsen J, Kerkhof M, Koopman LP, et al. Are children at high familial risk of developing allergy born into a low risk environment? The PIAMA Birth Cohort Study. *Prevention and Incidence of Asthma and Mite Allergy. Clin Exp Allergy* 2001;31:576-81.
41. Chatzi L, Plana E, Daraki V, Karakosta P, Alegkakis D, Tsatsanis C, et al. Metabolic syndrome in early pregnancy and risk of preterm birth. *Am J Epidemiol* 2009;170:829-36.
42. Porta D, Forastiere F, Di Lallo D, Perucci CA. [Enrolment and follow-up of a birth cohort in Rome]. *Epidemiol Prev* 2007;31:303-8.
43. Hohmann C, Pinart M, Tischer C, Gehring U, Heinrich J, Kull I, et al. The development of the MeDALL Core Questionnaires for a harmonized follow-up assessment of eleven European birth cohorts on asthma and allergies. *Int Arch Allergy Immunol* 2014;163:215-24.
44. Sucharew H, Ryan PH, Bernstein D, Succop P, Khurana Hershey GK, Lockey J, et al. Exposure to traffic exhaust and night cough during early childhood: the CCAAPS birth cohort. *Pediatr Allergy Immunol* 2010;21:253-9.
45. Maier D, Kalus W, Wolff M, Kalko SG, Roca J, Marin de Mas I, et al. Knowledge management for systems biology a general and visually driven framework applied to translational medicine. *BMC Syst Biol* 2011;5:38.
46. Mölter A, Simpson A, Berdel D, Brunekreef B, Custovic A, Cyrus J, et al. A multicentre study of air pollution exposure and childhood asthma prevalence: the ESCAPE project. *Eur Respir J* 2015;45:610-24.
47. Fuertes E, MacIntyre E, Agius R, Beelen R, Brunekreef B, Bucci S, et al. Associations between particulate matter elements and early-life pneumonia in seven birth cohorts: results from the ESCAPE and TRANSPHORM projects. *Int J Hyg Environ Health* 2014;217:819-29.
48. Pedersen M, Giorgis-Allemand L, Bernard C, Aguilera I, Andersen AM, Ballester F, et al. Ambient air pollution and low birthweight: a European cohort study (ESCAPE). *Lancet Respir Med* 2013;1:695-704.
49. Eeftens M, Beelen R, de Hoogh K, Bellander T, Cesaroni G, Cirach M, et al. Development of Land Use Regression models for PM(2.5), PM(2.5) absorbance, PM(10) and PM(coarse) in 20 European study areas; results of the ESCAPE project. *Environ Sci Technol* 2012;46:11195-205.
50. Lupinek C, Wollmann E, Baar A, Banerjee S, Breiteneder H, Broecker BM, et al. Advances in allergen-microarray technology for diagnosis and monitoring of allergy: the MeDALL allergen-chip. *Methods* 2014;66:106-19.
51. Skirind I, Lupinek C, Valenta R, Hovland V, Pahr S, Baar A, et al. The use of the MeDALL-chip to assess IgE sensitization: a new diagnostic tool for allergic disease? *Pediatr Allergy Immunol* 2015;26:239-46.
52. Westman M, Lupinek C, Bousquet J, Andersson N, Pahr S, Baar A, et al. Early childhood IgE reactivity to pathogenesis-related class 10 proteins predicts allergic rhinitis in adolescence. *J Allergy Clin Immunol* 2015;135:1199-206, e1-11.
53. Asarnoj A, Hamsten C, Wadén K, Lupinek C, Andersson N, Kull I, et al. Sensitization to cat and dog allergen molecules in childhood and prediction of symptoms of cat and dog allergy in adolescence: a BAMSE/MeDALL study. *J Allergy Clin Immunol* 2016;137:813-21.e7.
54. Siroux V, Lupinek C, Resch Y, Curin M, Just J, Keil T, et al. Specific IgE and IgG measured by the MeDALL allergen-chip depend on allergen and route of exposure: the EGEA study. *J Allergy Clin Immunol* 2016 [Epub ahead of print].
55. Garcia-Aymerich J, Benet M, Saeyns Y, Pinart M, Basagaña X, Smit HA, et al. Phenotyping asthma, rhinitis and eczema in MeDALL population-based birth cohorts: an allergic comorbidity cluster. *Allergy* 2015;70:973-84.
56. Hernan MA. Invited commentary: Agent-based models for causal inference-weighting data and theory in epidemiology. *Am J Epidemiol* 2015;181:103-5.
57. Belgrave DC, Buchan I, Bishop C, Lowe L, Simpson A, Custovic A. Trajectories of lung function during childhood. *Am J Respir Crit Care Med* 2014;189:1101-9.
58. Bousquet J, Van Cauwenberge P, Khaltaev N. Allergic rhinitis and its impact on asthma. *J Allergy Clin Immunol* 2001;108(suppl):S147-334.
59. Hovland V, Riiser A, Mowinckel P, Carlsen KH, Carlsen KC. Asthma with allergic comorbidities in adolescence is associated with bronchial responsiveness and airways inflammation. *Pediatr Allergy Immunol* 2014;25:351-9.
60. Leynaert B, Bousquet J, Neukirch C, Liard R, Neukirch F. Perennial rhinitis: an independent risk factor for asthma in nonatopic subjects: results from the European Community Respiratory Health Survey. *J Allergy Clin Immunol* 1999;104:301-4.
61. Pinart M, Benet M, Annesi-Maesano I, von Berg A, Berdel D, Carlsen KC, et al. Comorbidity of eczema, rhinitis, and asthma in IgE-sensitized and non-IgE-sensitized children in MeDALL: a population-based cohort study. *Lancet Respir Med* 2014;2:131-40.
62. Pinart M, Albang R, Maier D, Duran-Tauleria E, Mena G, Gimeno-Santos E, et al. Systematic review on the definition of allergic diseases in children: the MeDALL study. *Int Arch Allergy Immunol* 2015;168:110-21.
63. Prospero MC, Belgrave D, Buchan I, Simpson A, Custovic A. Challenges in interpreting allergen microarrays in relation to clinical symptoms: a machine learning approach. *Pediatr Allergy Immunol* 2014;25:71-9.
64. Lazic N, Roberts G, Custovic A, Belgrave D, Bishop CM, Winn J, et al. Multiple atopy phenotypes and their associations with asthma: similar findings from two birth cohorts. *Allergy* 2013;68:764-70.
65. Bousquet J, Coulomb Y, Arrendal H, Robinet-Levy M, Michel FB. Total serum IgE concentrations in adolescents and adults using the phadebas IgE PRIST technique. *Allergy* 1982;37:397-406.
66. Bousquet J, Becker WM, Hejjaoui A, Chanal I, Lebel B, Dhivert H, et al. Differences in clinical and immunologic reactivity of patients allergic to grass pollens and to multiple-pollen species. II. Efficacy of a double-blind, placebo-controlled, specific immunotherapy with standardized extracts. *J Allergy Clin Immunol* 1991;88:43-53.
67. Bousquet J, Hejjaoui A, Becker WM, Cour P, Chanal I, Lebel B, et al. Clinical and immunologic reactivity of patients allergic to grass pollens and to multiple pollen species. I. Clinical and immunologic characteristics. *J Allergy Clin Immunol* 1991;87:737-46.
68. Pene J, Rivier A, Lagier B, Becker WM, Michel FB, Bousquet J. Differences in IL-4 release by PBMC are related with heterogeneity of atopy. *Immunology* 1994;81:58-64.
69. Simpson A, Lazic N, Belgrave DC, Johnson P, Bishop C, Mills C, et al. Patterns of IgE responses to multiple allergen components and clinical symptoms at age 11 years. *J Allergy Clin Immunol* 2015;136:1224-31.
70. Ballardini N, Bergström A, Wahlgren CF, van Hage M, Hallner E, Kull I, et al. IgE antibodies in relation to prevalence and multimorbidity of eczema, asthma, and rhinitis from birth to adolescence. *Allergy* 2016;71:342-9.
71. Burte E, Bousquet J, Varraso R, Gormand F, Just J, Matran R, et al. Characterization of rhinitis according to the asthma status in adults using an unsupervised approach in the EGEA study. *PLoS One* 2015;10:e0136191.
72. Bousquet J, Knani J, Hejjaoui A, Ferrando R, Cour P, Dhivert H, et al. Heterogeneity of atopy. I. Clinical and immunologic characteristics of patients allergic to cypress pollen. *Allergy* 1993;48:183-8.
73. Kim NY, Kim GR, Kim JH, Baek JH, Yoon JW, Jee HM, et al. Food allergen sensitization in young children with typical signs and symptoms of immediate-type food allergies: a comparison between monosensitized and polysensitized children. *Korean J Pediatr* 2015;58:330-5.
74. Ramirez DA. The natural history of mountain cedar pollinosis. *J Allergy Clin Immunol* 1984;73:88-93.
75. Reid MJ, Schwietz LA, Whisman BA, Moss RB. Mountain cedar pollinosis: can it occur in non-atopics? *N Engl J Allergy Proc* 1988;9:225-32.
76. Wickman M, Asarnoj A, Tillander H, Andersson N, Bergström A, Kull I, et al. Childhood-to-adolescence evolution of IgE antibodies to pollens and plant foods in the BAMSE cohort. *J Allergy Clin Immunol* 2014;133:580-2.
77. Rudin A, Macaubas C, Wee C, Holt BJ, Slyu PD, Holt PG. "Bystander" amplification of PBMC cytokine responses to seasonal allergen in polysensitized atopic children. *Allergy* 2001;56:1042-8.
78. Just J, Elegbede CF, Deschildre A, Bousquet J, Moneret-Vautrin DA, Crepet A, et al. Three peanut allergic/sensitized phenotypes with gender difference. *Clin Exp Allergy* 2016;46:1596-604.
79. Pongracic JA, Krouse RZ, Babineau DC, Zoratti EM, Cohen RT, Wood RA, et al. Distinguishing characteristics of difficult-to-control asthma in inner-city children and adolescents. *J Allergy Clin Immunol* 2016;138:1030-41.
80. Zoratti EM, Krouse RZ, Babineau DC, Pongracic JA, O'Connor GT, Wood RA, et al. Asthma phenotypes in inner-city children. *J Allergy Clin Immunol* 2016;138:1016-29.
81. Gabet S, Just J, Couderc R, Bousquet J, Seta N, Momas I. Early polysensitization is associated to allergic multimorbidity in PARIS birth cohort infants. *Pediatr Allergy Immunol* 2016;27:831-7.
82. Just J, Deslandes-Boutmy E, Amat F, Desseaux K, Nemni A, Bourrat E, et al. Natural history of allergic sensitization in infants with early-onset atopic dermatitis: results from ORCA Study. *Pediatr Allergy Immunol* 2014;25:668-73.
83. Des Roches A, Paradis L, Knani J, Hejjaoui A, Dhivert H, Chanez P, et al. Immunotherapy with a standardized *Dermatophagoides pteronyssinus* extract. V—Duration of efficacy of immunotherapy after its cessation. *Allergy* 1996;51:430-3.
84. Amat F, Saint-Pierre P, Bourrat E, Nemni A, Couderc R, Boutmy-Deslandes E, et al. Early-onset atopic dermatitis in children: which are the phenotypes at risk of asthma? Results from the ORCA cohort. *PLoS One* 2015;10:e0131369.
85. Joubert BR, Felix JF, Yousefi P, Bakulski KM, Just AC, Breton C, et al. DNA methylation in newborns and maternal smoking in pregnancy: genome-wide consortium meta-analysis. *Am J Hum Genet* 2016;98:680-96.
86. Gehring U, Wijga AH, Hoek G, Bellander T, Berdel D, Brüske I, et al. Exposure to air pollution and development of asthma and rhinoconjunctivitis throughout childhood and adolescence: a population-based birth cohort study. *Lancet Respir Med* 2015;3:933-42.

87. Gruzieva O, Xu CJ, Breton CV, Annesi-Maesano I, Antó JM, Auffray C, et al. Epigenome-wide meta-analysis of methylation in children related to prenatal NO₂ air pollution exposure. *Environ Health Perspect* 2016 [Epub ahead of print].
88. Guerra S, Halonen M, Vasquez MM, Spangenberg A, Stern DA, Morgan WJ, et al. Relation between circulating CCL16 concentrations, lung function, and development of chronic obstructive pulmonary disease across the lifespan: a prospective study. *Lancet Respir Med* 2015;3:613-20.
89. Coquet JM, Schuijs MJ, Smyth MJ, Deswarte K, Beyaert R, Braun H, et al. Interleukin-21-producing CD4(+) T cells promote type 2 immunity to house dust mites. *Immunity* 2015;43:318-30.
90. Schuijs MJ, Willart MA, Vergote K, Gras D, Deswarte K, Ege MJ, et al. Farm dust and endotoxin protect against allergy through A20 induction in lung epithelial cells. *Science* 2015;349:1106-10.
91. Palomares O, Ruckert B, Jartti T, Küçüksezer UC, Puhakka T, Gomez E, et al. Induction and maintenance of allergen-specific FOXP3+ Treg cells in human tonsils as potential first-line organs of oral tolerance. *J Allergy Clin Immunol* 2012;129:510-20, e1-9.
92. Palomares O, Martin-Fontecha M, Lauener R, Traidl-Hoffmann C, Cavkaytar O, Akdis M, et al. Regulatory T cells and immune regulation of allergic diseases: roles of IL-10 and TGF-beta. *Genes Immun* 2014;15:511-20.
93. Küçüksezer UC, Palomares O, Ruckert B, Jartti T, Puhakka T, Nandy A, et al. Triggering of specific Toll-like receptors and proinflammatory cytokines breaks allergen-specific T-cell tolerance in human tonsils and peripheral blood. *J Allergy Clin Immunol* 2013;131:875-85.
94. Stanic B, van de Veen W, Wirz OF, Rückert B, Morita H, Söllner S, et al. IL-10-overexpressing B cells regulate innate and adaptive immune responses. *J Allergy Clin Immunol* 2015;135:771-80.e8.
95. van de Veen W, Stanic B, Yaman G, Wawrzyniak M, Söllner S, Akdis DG, et al. IgG4 production is confined to human IL-10-producing regulatory B cells that suppress antigen-specific immune responses. *J Allergy Clin Immunol* 2013;131:1204-12.
96. van de Veen W, Stanic B, Wirz OF, Jansen K, Globinska A, Akdis M. Role of regulatory B cells in immune tolerance to allergens and beyond. *J Allergy Clin Immunol* 2016;138:654-65.
97. Werfel T, Allam JP, Biedermann T, Eyerich K, Gilles S, Guttman-Yassky E, et al. Cellular and molecular immunologic mechanisms in patients with atopic dermatitis. *J Allergy Clin Immunol* 2016;138:336-49.
98. Wegrzyn AS, Jakiela B, Ruckert B, Jutel M, Akdis M, Sanak M, et al. T-cell regulation during viral and nonviral asthma exacerbations. *J Allergy Clin Immunol* 2015;136:194-7.e9.
99. Kast JI, Wanke K, Soyka MB, Wawrzyniak P, Akdis D, Kingo K, et al. The broad spectrum of interepithelial junctions in skin and lung. *J Allergy Clin Immunol* 2012;130:544-7.e4.
100. Soyka MB, Holzmann D, Akdis CA. Regulatory cells in allergen-specific immunotherapy. *Immunotherapy* 2012;4:389-96.
101. Kubo T, Wawrzyniak P, Morita H, Sugita K, Wanke K, Kast JI, et al. CpG-DNA enhances the tight junction integrity of the bronchial epithelial cell barrier. *J Allergy Clin Immunol* 2015;136:1413-6.e8.
102. Smit HA, Pinart M, Anto JM, Keil T, Bousquet J, Carlsen KH, et al. Childhood asthma prediction models: a systematic review. *Lancet Respir Med* 2015;3:973-84.
103. Bousquet J, Anto JM, Berkouk K, Gergen P, Antunes JP, Augé P, et al. Developmental determinants in non-communicable chronic diseases and ageing. *Thorax* 2015;70:595-7.
104. Bousquet J, Schunemann HJ, Hellings PW, Arnavielhe S, Bachert C, Bedbrook A, et al. MACVIA clinical decision algorithm in adolescents and adults with allergic rhinitis. *J Allergy Clin Immunol* 2016;138:367-74.e2.
105. Bousquet J, Schunemann HJ, Fonseca J, Samolinski B, Bachert C, Canonica GW, et al. MACVIA-ARIA Sentinel Network for allergic rhinitis (MASK-rhinitis): the new generation guideline implementation. *Allergy* 2015;70:1372-92.
106. Bourret R, Bousquet J, Mercier J, Camuzat T, Bedbrook A, Demoly P, et al. MASK-rhinitis, a single tool for integrated care pathways in allergic rhinitis. *World Hosp Health Serv* 2015;51:36-9.
107. Canonica G, Bachert C, Hellings P, Ryan D, Valovirta E, Wickman M, et al. Allergen immunotherapy (AIT): a prototype of precision medicine. *World Allergy Organ J* 2015;8:31.
108. Bousquet J, Dahl R, Khaltaev N. Global alliance against chronic respiratory diseases. *Allergy* 2007;62:216-23.
109. Bousquet J, Khaltaev N. Global surveillance, prevention and control of chronic respiratory diseases. A comprehensive approach. *Global Alliance against Chronic Respiratory Diseases*. Geneva: World Health Organization; 2007.
110. Bousquet J, Mantzouranis E, Cruz AA, Ait-Khaled N, Baena-Cagnani CE, Bleecker ER, et al. Uniform definition of asthma severity, control, and exacerbations: document presented for the World Health Organization Consultation on Severe Asthma. *J Allergy Clin Immunol* 2010;126:926-38.
111. Bousquet J, Addis A, Adcock I, Agache I, Agusti A, Alonso A, et al. Integrated care pathways for airway diseases (AIRWAYS-ICPs). *Eur Respir J* 2014;44:304-23.
112. Bousquet J, Barbara C, Bateman E, Bel E, Bewick M, Chavannes NH, et al. AIRWAYS ICPs (European Innovation Partnership on Active and Healthy Ageing) from concept to implementation. *Eur Respir J* 2016;47:1028-33.
113. Bousquet J, Michel J, Standberg T, Crooks G, Iakovidis I. The European Innovation Partnership on Active and Healthy Ageing: the European Geriatric Medicine introduces the EIP on AHA Column. *Eur Geriatr Med* 2014;5:361-2.
114. Bousquet J, Bourquin C, Augé P, Domy P, Bringer J, Aoustin M, et al. MACVIA-LR reference site of the European Innovation Partnership on Active and Healthy Ageing. *Eur Geriatr Med* 2014;5:406-15.
115. Bousquet J, Mercier J, Avignon A, Bourret R, Camuzat T. MACVIA-LR (France) case study. Report EUR 27150 EN. In: Abadie F, editor. Strategic intelligence monitor on personal health systems phase 3 (SIMP3S3). Luxembourg: Publications Office of the European Union: JRC (Joint Research Centre) Science and policy report; 2015.
116. Samolinski B, Fronczak A, Kuna P, Akdis CA, Anto JM, Bialoszewski AZ, et al. Prevention and control of childhood asthma and allergy in the EU from the public health point of view: Polish Presidency of the European Union. *Allergy* 2012;67:726-31.
117. Samolinski B, Fronczak A, Włodarczyk A, Bousquet J. Council of the European Union conclusions on chronic respiratory diseases in children. *Lancet* 2012;379:e45-6.
118. Haahtela T, von Hertzen L, Makela M, Hannuksela M. Finnish Allergy Programme 2008-2018—time to act and change the course. *Allergy* 2008;63:634-45.
119. Lodrup Carlsen KC, Haahtela T, Carlsen KH, Smith A, Bjerke M, Wickman M, et al. Integrated allergy and asthma prevention and care: report of the MeDAL/AIRWAYS ICPs Meeting at the Ministry of Health and Care Services, Oslo, Norway. *Int Arch Allergy Immunol* 2015;167:57-64.
120. Marenholz I, Esparza-Gordillo J, Ruschendorf F, Bauerfeind A, Strachan DP, Spycher BD, et al. Meta-analysis identifies seven susceptibility loci involved in the atopic march. *Nat Commun* 2015;6:8804.
121. Venter C, Maslin K, Arshad SH, Patil V, Grundy J, Glasbey G, et al. Very low prevalence of IgE mediated wheat allergy and high levels of cross-sensitisation between grass and wheat in a UK birth cohort. *Clin Transl Allergy* 2016;6:22.
122. Dai X, Dharmage SC, Lowe AJ, Allen KJ, Thomas PS, Perret J, et al. Early smoke exposure is associated with asthma and lung function deficits in adolescents. *J Asthma* 2016 Oct 28 [Epub ahead of print].
123. Svanes C, Sunyer J, Plana E, Dharmage S, Heinrich J, Jarvis D, et al. Early life origins of chronic obstructive pulmonary disease. *Thorax* 2010;65:14-20.
124. Ruokolainen L, Fyhrquist N, Haahtela T. The rich and the poor: environmental biodiversity protecting from allergy. *Curr Opin Allergy Clin Immunol* 2016;16:421-6.
125. Gensollen T, Iyer SS, Kasper DL, Blumberg RS. How colonization by microbiota in early life shapes the immune system. *Science* 2016;352:539-44.
126. Bloomfield SF, Rook GA, Scott EA, Shanahan F, Stanwell-Smith R, Turner P. Time to abandon the hygiene hypothesis: new perspectives on allergic disease, the human microbiome, infectious disease prevention and the role of targeted hygiene. *Perspect Public Health* 2016;136:213-24.
127. Wesemann DR, Nagler CR. The microbiome, timing, and barrier function in the context of allergic disease. *Immunity* 2016;44:728-38.
128. von Mutius E. The microbial environment and its influence on asthma prevention in early life. *J Allergy Clin Immunol* 2016;137:680-9.
129. Cayer DM, Nazor KL, Schork NJ. Mission critical: the need for proteomics in the era of next-generation sequencing and precision medicine. *Hum Mol Genet* 2016;25:R182-9.
130. van Dijk EL, Auger H, Jaszczyszyn Y, Thermes C. Ten years of next-generation sequencing technology. *Trends Genet* 2014;30:418-26.
131. Just J, Gouvis-Echraghi R, Couderc R, Guillemot-Lambert N, Saint-Pierre P. Novel severe wheezy young children phenotypes: boys atopic multiple-trigger and girls nonatopic uncontrolled wheeze. *J Allergy Clin Immunol* 2012;130:103-10.e8.
132. Just J, Gouvis-Echraghi R, Rouve S, Wanin S, Moreau D, Annesi-Maesano I. Two novel, severe asthma phenotypes identified during childhood using a clustering approach. *Eur Respir J* 2012;40:55-60.
133. Price DB, Rigazio A, Campbell JD, Bleecker ER, Corrigan CJ, Thomas M, et al. Blood eosinophil count and prospective annual asthma disease burden: a UK cohort study. *Lancet Respir Med* 2015;3:849-58.
134. Angus DC. Fusing randomized trials with big data: the key to self-learning health care systems? *JAMA* 2015;314:767-8.
135. Herr M, Just J, Nikasinovic L, Foucault C, Le Marec AM, Giordanela JP, et al. Risk factors and characteristics of respiratory and allergic phenotypes in early childhood. *J Allergy Clin Immunol* 2012;130:389-96.e4.