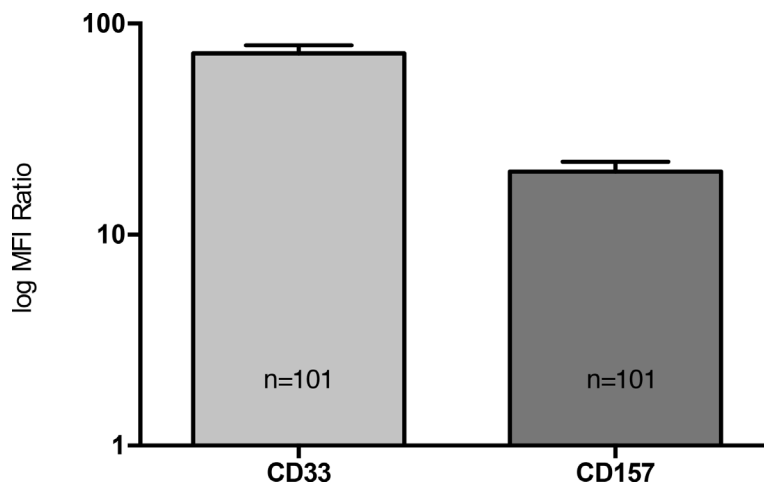
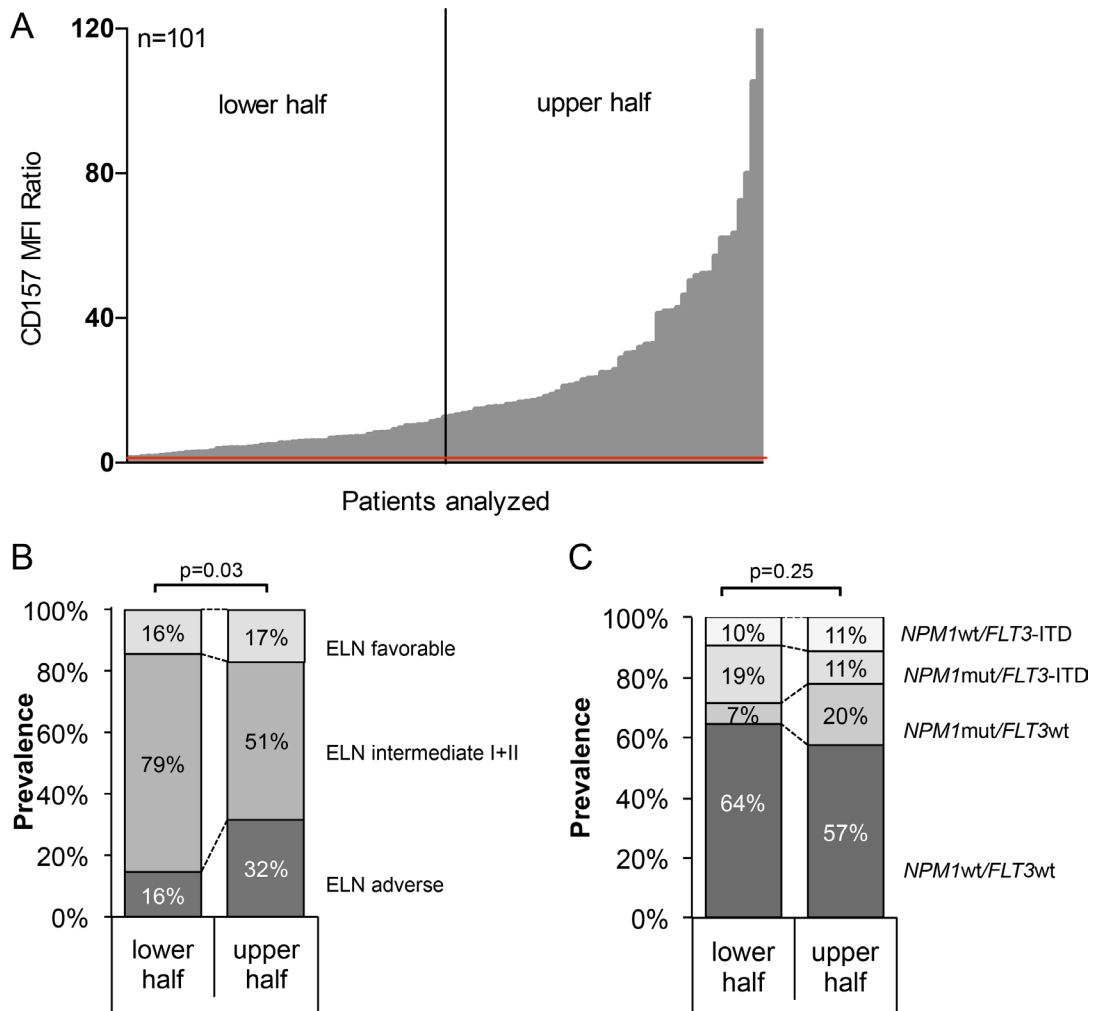


Targeting CD157 in AML using a novel, Fc-engineered antibody construct

Supplementary Materials



Supplementary Figure 1: CD157 expression intensity (MFI ratio) compared to CD33 in 101 primary AML patient samples.



Supplementary Figure 2: Correlation of CD157 expression to molecular and cytogenetic characteristics in AML.

(A) The patient cohort was divided into two halves based on expression intensity for correlation to (B) genetic risk groups according to the European Leukemia Net (ELN) classification and (C) to mutations in the *NPM1* and *FLT3* gene.