

X-ray Dark-field Radiography - Improved *In-Vivo* Diagnosis of Lung Cancer in Mice

Kai Scherer^{1,+,*}, Andre Yaroshenko^{1,2,+}, Deniz Ali Bölükbas^{3,+}, Lukas B. Gromann¹, Katharina Hellbach⁴, Felix G. Meinel⁴, Margarita Braunagel⁴, Jens von Berg⁵, Oliver Eickelberg³, Maximilian F. Reiser⁴, Franz Pfeiffer¹, Silke Meiners³, and Julia Herzen¹

¹Lehrstuhl für Biomedizinische Physik, Physik-Department & Institut für Medizintechnik, Technische Universität München, 85748 Garching, Germany

²Philips Medical Systems DMC GmbH, 22335 Hamburg, 22335 Hamburg, Germany

³Comprehensive Pneumology Center (CPC), University Hospital, Ludwig-Maximilians University, Helmholtz Zentrum München, 81377 Munich, Member of the German Center for Lung Research (DZL), Germany

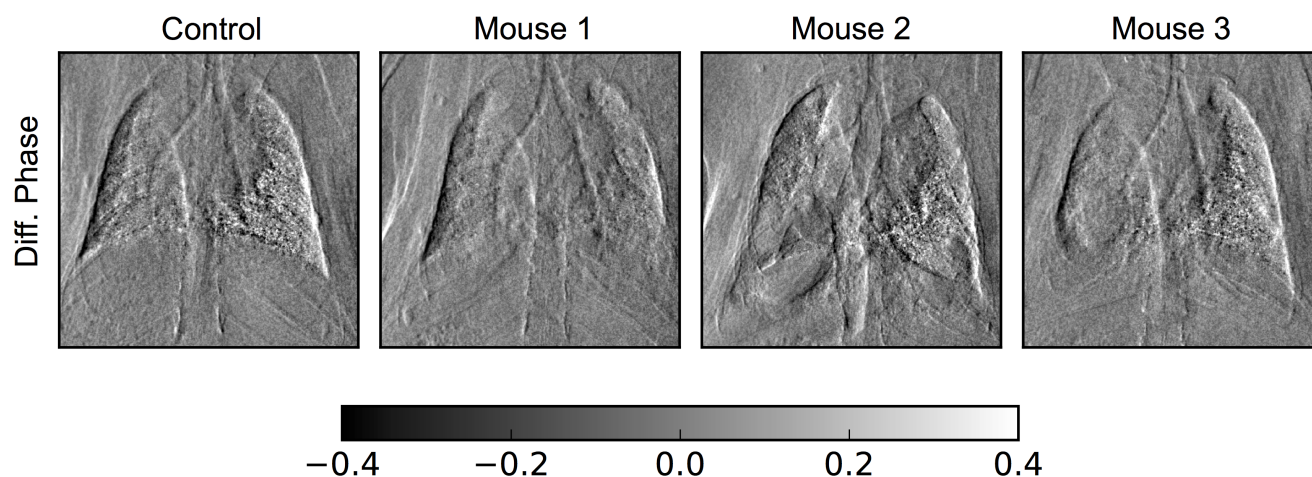
⁴Institute for Clinical Radiology, Ludwig-Maximilians-University Hospital Munich, 81377 Munich, Germany

⁵Philips Research Laboratories, Philips Medical Systems, 22335 Hamburg, Germany

*kai.scherer@tum.de

+these authors contributed equally to this work

Additional Information



Supplementary Figure 1. Diff. phase contrast images of the mice shown in Fig. 2. For sake of completeness, this figure shows the differential phase contrast images of the same mice as shown in Fig. 2. The colorbar is given in radian. Due to the strong dark-field signal there is a lot of noise present in the region of the lung. However, this data was not included in the analysis, as we focused on the dark-field.