

See discussions, stats, and author profiles for this publication at: <https://www.researchgate.net/publication/316946795>

# MEGDEL Syndrome: Expanding the Phenotype and New Mutations

Article in *Neuropediatrics* · May 2017

DOI: 10.1055/s-0037-1602833

---

CITATIONS

0

---

READS

8

5 authors, including:



[Silvia Sequeira](#)

Centro Hospitalar de Lisboa Central

23 PUBLICATIONS 190 CITATIONS

[SEE PROFILE](#)



[Ron A Wevers](#)

Radboud University

618 PUBLICATIONS 15,186 CITATIONS

[SEE PROFILE](#)

Some of the authors of this publication are also working on these related projects:



Newborn screening method for Cerebrotendinous Xanthomatosis [View project](#)

All content following this page was uploaded by [Silvia Sequeira](#) on 06 July 2017.

The user has requested enhancement of the downloaded file. All in-text references [underlined in blue](#) are added to the original document and are linked to publications on ResearchGate, letting you access and read them immediately.

# MEGDEL Syndrome: Expanding the Phenotype and New Mutations

Sílvia Sequeira<sup>1</sup> Márcia Rodrigues<sup>2</sup> Sandra Jacinto<sup>3</sup> Ron A. Wevers<sup>4</sup> Saskia B. Wortmann<sup>5,6,7</sup>

<sup>1</sup> Metabolic Unit, Department of Pediatrics, Hospital de Dona Estefânia, CHLC, Lisbon, Portugal

<sup>2</sup> Department of Medical Genetics, Hospital de Dona Estefânia, CHLC, Lisbon, Portugal

<sup>3</sup> Department of Neuropediatrics, Hospital de Dona Estefânia, Centro Hospitalar Lisboa Central, Lisbon, Portugal

<sup>4</sup> Translational Metabolic Laboratory (TML), Department of Laboratory Medicine, Radboud University Medical Centre, Nijmegen, The Netherlands

<sup>5</sup> Department of Pediatrics, Salzburger Landeskliniken (SALK) and Paracelsus Medical University (PMU), Salzburg, Austria

<sup>6</sup> Institute of Human Genetics, Technical University Munich, Munich, Germany

<sup>7</sup> Institute of Human Genetics, Helmholtz Zentrum Munich, Neuherberg, Germany

Address for correspondence Sílvia Sequeira, MD, Metabolic Unit, Department of Pediatrics, Hospital de Dona Estefânia, CHLC, Rua Jacinta Marto, 1169-045 Lisbon, Portugal (e-mail: silvia.sequeira@chlc.min-saude.pt).

Neuropediatrics

## Abstract

3-Methylglutaconic aciduria, Deafness, Encephalopathy, neuroradiological evidence of Leigh-like disease (MEGDEL syndrome) was initially described in four children with additional features of defective oxidative phosphorylation. Loss of functional variants in the *SERAC1* gene was later reported in relation with this disorder of phospholipid remodeling. We describe a girl born after a pregnancy complicated by intrauterine growth retardation. In the neonatal period, she presented hypotonia, lethargy, weak reflexes, transient hypoglycemia, and elevated transaminases. Magnetic resonance imaging (MRI) performed at 12 days of life showed bilateral basal ganglia alterations suggestive of Leigh syndrome. She progressed with failure to thrive, severe delay of developmental milestones, axial hypotonia, spastic tetraparesis and dystonic movements. Investigations disclosed hyperlactacidemia, and the urinary organic acids revealed high levels mainly of 3-methylglutaconic acid. Muscle biopsy showed decreased activity of several complexes of the respiratory chain. Compound heterozygosity for two previously unreported variants in *SERAC1* leads to the diagnosis of MEGDEL syndrome. Unlike other patients, this child presents very early MRI alterations and manifests no deafness.

## Keywords

- ▶ MEGDEL syndrome
- ▶ *SERAC1* gene
- ▶ 3-methylglutaconic aciduria
- ▶ mitochondrial disorder
- ▶ Leigh syndrome

## Introduction

3-Methylglutaconic aciduria, Deafness, Encephalopathy, Leigh-like (MEGDEL) syndrome (MIM #614739) or *SERAC1* defect is one of the several inborn errors of metabolism with 3-methylglutaconic aciduria (3-MGA-uria) as a

discriminative feature, a heterogeneous group of disorders.<sup>1–5</sup> Here, we expand the clinical and genetic spectrum by describing one individual early magnetic resonance imaging (MRI) Leigh syndrome and without hearing loss harboring previously unreported variants in *SERAC1* gene.<sup>3,6–8</sup>

received  
January 6, 2017  
accepted after revision  
March 31, 2017

© Georg Thieme Verlag KG  
Stuttgart · New York

DOI <https://doi.org/10.1055/s-0037-1602833>.  
ISSN 0174-304X.

## Case Report

This girl was born by cesarean delivery at 39 weeks of unrelated parents of European ancestry. No relevant familial clinical history was reported. Despite intrauterine growth retardation, the pregnancy was uneventful. Her birth weight was 2,240 g, height 44.5 cm, and head circumference 31.5 cm (all below p3). Apgar score was 9 and 10 at 1 and 5 minutes, respectively. After 30 minutes of birth, she started grunting, showing irritability, decreased reflexes, and drowsiness. She needed parenteral nutrition due to progressive feeding difficulties and progressed to hypotonia and lethargy.

Transient hypoglycemia (1.4 mmol/L; reference values [RV]: 3.5–5.6) and mildly elevated transaminases were detected. Blood gas analysis at 48 hours of life revealed metabolic acidosis (pH 7.15, bicarbonate 10.3 mmol/L) and increased lactate (6.5 mmol/L; RV: 0.9–2.3). There was no evidence of infection. She was treated with bicarbonate, antibiotics, and artificial ventilation on day 3 of life. Due to worsening of symptoms on day 4 of life, with constant groaning, breathing difficulty, abdominal distension, food refusal, abundant brownish secretions in the gastric aspirate, and worsening of consciousness level to coma, she was transferred to the neonatal intensive care unit of a specialized metabolic center.

She was pale, not well perfused, mildly jaundiced, presenting groaning, few active movements, slow reactions to stimuli, decreased neurological reflexes, and no peripheral hypotonia or clonus and rapidly progressed to coma. She did not present dysmorphisms or hepatomegaly. The electroencephalogram revealed depressed, irregular, and moderately reactive features, abundant multifocal paroxysmal activity and several electrographic seizures. The computed tomography scan suggested diffuse cerebral edema.

From day 7 of life onwards, she presented progressive improvement of her neurological status with an increase in consciousness and reflexes despite persistent lactic acidemia (3.1 mmol/L) and hyperammonemia (182.8  $\mu$ mol/L; RV: < 50), without hypoglycemia. Urinary organic acids showed 3-MGA-uria (107  $\mu$ mol/mmolCr; RV: 0–9, **Table 1**).

MRI of the brain was performed on day 12 of life (**Fig. 1**) and revealed symmetric bilateral lesions involving the caudate nucleus, the pallidum, and the anterior part of the putamen, white matter hyperintensities on T2 and hypointense on T1, with pallidal lesions with restricted diffusion. A high lactate peak at the basal ganglia, pulvinar thalamus, and white matter was also observed.

Follow-up of the child showed marked failure to thrive, severe delay of developmental milestones, microcephaly, spastic tetraparesis, and dystonia. Later sleeping disturbances were frequently reported, and at the age of 6 years, the first seizure suggested myoclonic epilepsy, which was successfully treated with levetiracetam.

Ophthalmological observation and hearing screening were unremarkable. No follow-up MRI is available.

A muscle biopsy performed at the age of 1 year showed: fiber size variability, overload of periodic acid-Schiff-positive material in some fibers; cytochrome oxidase/succinic dehydrogenase (COX/SDH) staining hyperchromatic aggregates to the periphery and the absence of COX-negative fibers. The activity of the respiratory chain showed decreased activity of several complexes: II (37.9%), IV (34.0%), V (20.1%), and segment II + III (23.2%).

A leucine-loading test was performed as described by Wortmann et al.<sup>9</sup> No significant increase in 3-MGA-uria was seen after leucine loading, virtually excluding 3-methylglutaconyl-CoA hydratase deficiency (AUH) defect (**Table 1**).

Sanger Sequencing of *SERAC1* gene revealed two previously unreported variants c.310A > T (p.Lys104\*) and c.609 + 5\_609 + 8del suggesting the diagnosis of MEGDEL syndrome.

Presently, at the age of 8 years, the patient can fixate and follow, is interested in her surroundings, smiles, reacts to her name or other sounds, babbles, looks for hidden objects, shows difficulties in manipulation, but throws toys to the floor. Although head control is still unstable, she can roll but not sit unaided. She has sleeping problems such as difficulty to fall asleep and frequent awakening during the night. Eye movements are normal, but she also presents myoclonic epilepsy, frequent dystonic movements of limbs and head and marked spastic tetraparesis.

## Discussion

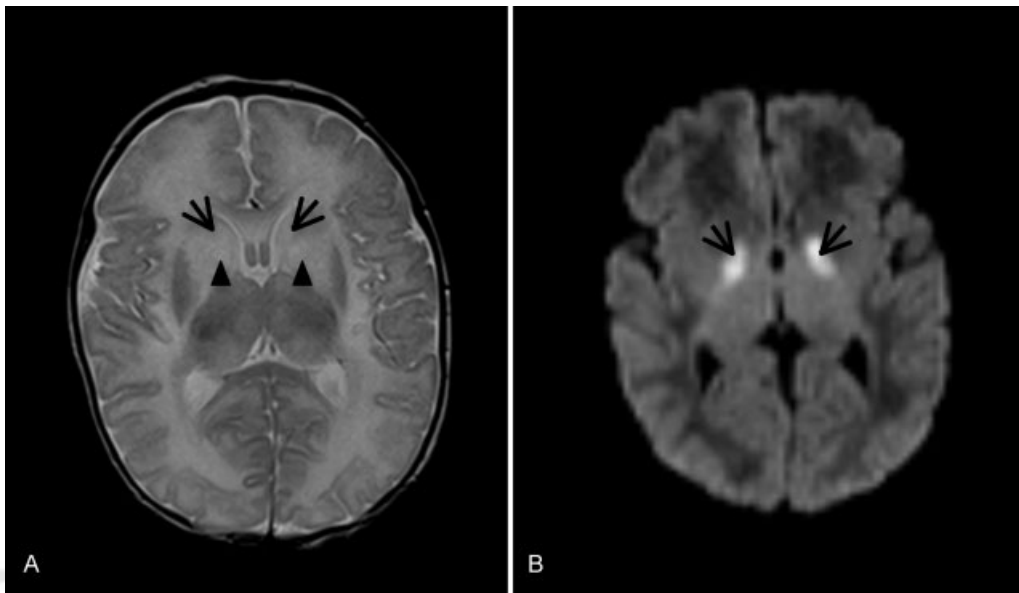
Since MEGDEL syndrome was first described,<sup>2</sup> more than 25 cases have been reported. These patients share a strikingly homogenous clinical phenotype, with signs and symptoms beginning during their newborn period or infancy.<sup>3,6–8,10,11</sup> These include elevated urinary 3-MGA, deafness, neuro-radiological evidence of Leigh-like disease,<sup>12</sup> neonatal hypoglycemia, bilateral optic nerve atrophy, microcephaly, myoclonic epilepsy, dystonia, and disturbed oxidative phosphorylation. In addition, transient hepatic involvement has

**Table 1** Biochemical analysis of urinary organic acids during neonatal period and leucine loading test

	Reference value $\mu$ mol/mmolCr	6 d of life	Leucine loading test		
			Basal	After 1 h	After 24 h
3-hydroxyisovaleric acid	0–18	66	33	86	130
3-methylglutaric acid	0–0.1	15	28	24	33
3-methylglutaconic acid	0–9	107	187	179	234
3-hydroxy-3-methylglutaric acid	15–43	98	35	39	26

Abbreviation: Cr, creatinine.

Note: Loading test with 100 mg/kg of leucine orally reveals only a 1.25 increase of 3-MGA excluding an AUH defect.



**Fig. 1** Axial T2-weighted and diffusion MRI images of the brain performed 12 days after birth depicting Leigh-like changes, with (A) bilateral increased signal change in the caudate nucleus (black arrow), globus pallidus, and medial putamen (arrowhead) and with (B) pallidal lesions with restricted diffusion (arrows). MRI, magnetic resonance imaging.

been described leading to a possible designation of MEGDEL syndrome.<sup>11</sup>

Here, we report a case of MEGDEL syndrome, with very early MRI alterations, already detected 12 days after birth. This is much earlier than what has been reported for MRI alterations in MEGDEL syndrome.<sup>11</sup>

Another important finding is that this patient displays no deafness at the age of 8 years. This has only been reported once in this disorder and we cannot exclude that this will develop later in life.<sup>7</sup>

Both variants in *SERAC1* detected in this affected individual have not been described previously, but prediction models (Alamut Visual software v.2.7.1) support their pathogenicity. The nonsense variant c.310A > T (p.Lys104\*) is predicted to interrupt the reading frame by a premature stop codon, which may lead to an impairment in the targeting of the produced mRNA for nonsense-mediated decay. The intronic c.609 + 5\_609 + 8del variant, also classified as a variant of unknown pathogenicity, is close to the donor splice site of exon 7 and therefore a skip of exon 7 is predicted.

In conclusion, the individual presented here expands the clinical spectrum with early detectable basal ganglia lesions and absence of deafness and extends the genetic spectrum.

## References

- 1 Wortmann SB, Duran M, Anikster Y, et al. Inborn errors of metabolism with 3-methylglutaconic aciduria as discriminative feature: proper classification and nomenclature. *J Inherit Metab Dis* 2013;36(06):923–928
- 2 Wortmann S, Rodenburg RJ, Huizing M, et al. Association of 3-methylglutaconic aciduria with sensori-neural deafness, encephalopathy, and Leigh-like syndrome (MEGDEL association) in four patients with a disorder of the oxidative phosphorylation. *Mol Genet Metab* 2006;88(01):47–52
- 3 Wortmann SB, Vaz FM, Gardeitchik T, et al. Mutations in the phospholipid remodeling gene *SERAC1* impair mitochondrial function and intracellular cholesterol trafficking and cause dystonia and deafness. *Nat Genet* 2012;44(07):797–802
- 4 Mandel H, Saita S, Edvardson S, et al. Deficiency of *HTRA2/Omi* is associated with infantile neurodegeneration and 3-methylglutaconic aciduria. *J Med Genet* 2016;53(10):690–696
- 5 Oláhová M, Thompson K, Hardy SA, et al. Pathogenic variants in *HTRA2* cause an early-onset mitochondrial syndrome associated with 3-methylglutaconic aciduria. *J Inherit Metab Dis* 2017;40(01):121–130
- 6 Tort F, García-Silva MT, Ferrer-Cortès X, et al. Exome sequencing identifies a new mutation in *SERAC1* in a patient with 3-methylglutaconic aciduria. *Mol Genet Metab* 2013;110(1-2):73–77
- 7 Lumish HS, Yang Y, Xia F, Wilson A, Chung WK. The expanding MEGDEL phenotype: optic nerve atrophy, microcephaly, and myoclonic epilepsy in a child with *SERAC1* mutations. *JIMD Rep* 2014;16:75–79
- 8 Rodríguez-García ME, Martín-Hernández E, de Aragón AM, et al. First missense mutation outside of *SERAC1* lipase domain affecting intracellular cholesterol trafficking. *Neurogenetics* 2016;17(01):51–56
- 9 Wortmann SB, Kluijtmans LAJ, Sequeira S, Wevers RA, Morava E. Leucine loading test is only discriminative for 3-methylglutaconic aciduria due to AUH defect. *JIMD Rep* 2014;16:1–6
- 10 Karkucinska-Wieckowska A, Lebidzinska M, Jurkiewicz E, et al. Increased reactive oxygen species (ROS) production and low catalase level in fibroblasts of a girl with MEGDEL association (Leigh syndrome, deafness, 3-methylglutaconic aciduria). *Folia Neuropathol* 2011;49(01):56–63
- 11 Sarig O, Goldsher D, Nousbeck J, et al. Infantile mitochondrial hepatopathy is a cardinal feature of MEGDEL syndrome (3-methylglutaconic aciduria type IV with sensorineural deafness, encephalopathy and Leigh-like syndrome) caused by novel mutations in *SERAC1*. *Am J Med Genet A* 2013;161A(09):2204–2215
- 12 Wortmann SB, van Hasselt PM, Barić I, et al. Eyes on MEGDEL: distinctive basal ganglia involvement in dystonia deafness syndrome. *Neuropediatrics* 2015;46(02):98–103