



# Mitotic figure in the peripheral blood smear

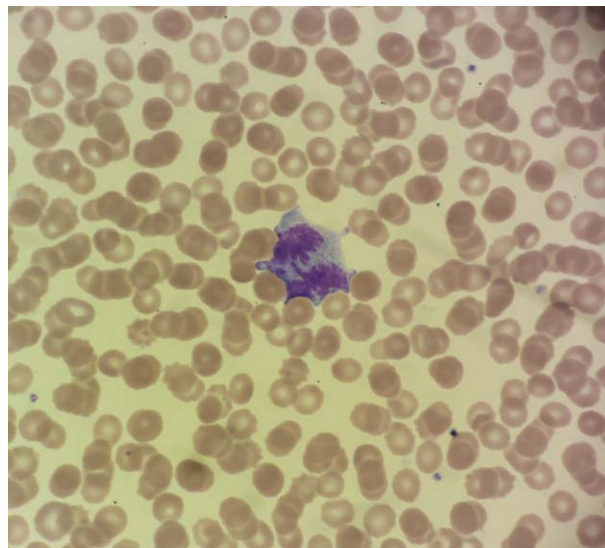
Sebastian Hörber<sup>1</sup>  | Ingo Rettig<sup>1</sup> | Andreas Peter<sup>1,2,3</sup>

<sup>1</sup>Division of Endocrinology, Diabetology, Vascular Medicine, Nephrology and Clinical Chemistry Department of Internal Medicine, University of Tübingen, Tübingen, Germany; <sup>2</sup>Institute for Diabetes Research and Metabolic Diseases of the Helmholtz Center Munich at the University of Tübingen, Tübingen, Germany; <sup>3</sup>German Center for Diabetes Research (DZD), München-Neuherberg, Germany

## Correspondence

Dr. Sebastian Hörber, MD, Otfried-Müller-Str.10, 72076 Tübingen, Germany.

Email: sebastian.hoerber@med.uni-tuebingen.de



A previously healthy 19-year-old man presented with fever, sore throat, and strong feeling of illness. Physical examination showed strong swelling of throat tonsils and moderate hepatosplenomegaly. The laboratory values were as follows: a total white blood count of  $10.9 \times 10^9/L$ , hemoglobin 14.1 g/dL, and a platelet count of  $109 \times 10^9/L$ . Total bilirubin was 1.4 mg/dL and CRP was 1.32 mg/dL. The serological analyses revealed IgG and IgM antibodies against EBV-VCA consistent with an acute Epstein-Barr virus infection. The peripheral blood smear revealed 80.0% lymphocytes, 12.4% neutrophils, 6.9%

monocytes, 0.4% eosinophils, and 0.3% basophils. In it a mitotic figure was found (see Image 1). Mitotic figures are an extremely uncommon finding as they are usually seen in patients with acute leukemia or rarer in EBV infections. Symptomatic therapy led to complete resolution of the symptoms.

## CONFLICT OF INTEREST

Nothing to report.