

Genome-wide Analyses Identify *KIF5A* as a Novel ALS Gene

Highlights

- Loss-of-function mutations in *KIF5A* are a cause of amyotrophic lateral sclerosis
- ALS-associated *KIF5A* mutations are distinct from HSP and CMT mutations in *KIF5A*
- Identification of *KIF5A* highlights the role of cytoskeleton in ALS pathogenesis

Authors

Aude Nicolas, Kevin P. Kenna, Alan E. Renton, ..., Christopher E. Shaw, Bryan J. Traynor, John E. Landers

Correspondence

bryan.traynor@nih.gov (B.J.T.), john.landere@umassmed.edu (J.E.L.)

In Brief

Using a large-scale genome-wide association study and exome sequencing, we identified *KIF5A* as a novel gene associated with ALS. Our data broaden the phenotype resulting from mutations in *KIF5A* and highlight the importance of cytoskeletal defects in the pathogenesis of ALS.



Genome-wide Analyses Identify KIF5A as a Novel ALS Gene

Aude Nicolas,^{1,137} Kevin P. Kenna,^{2,137} Alan E. Renton,^{1,3,4,137} Nicola Ticozzi,^{5,6,137} Faraz Faghri,^{7,8,137} Ruth Chia,^{1,137} Janice A. Dominov,² Brendan J. Kenna,² Mike A. Nalls,^{7,9} Pamela Keagle,² Alberto M. Rivera,¹ Wouter van Rheenen,¹⁰ Natalie A. Murphy,¹ Joke J.F.A. van Vugt,¹⁰ Joshua T. Geiger,¹¹ Rick A. Van der Spek,¹⁰ Hannah A. Pliner,¹ Shankaracharya,² Bradley N. Smith,¹² Giuseppe Marangi,^{1,13} Simon D. Topp,¹² Yevgeniya Abramzon,^{1,14} Athina Soragia Gkazi,¹² John D. Eicher,¹⁵ Aoife Kenna,² ITALSGEN Consortium, Gabriele Mora,¹⁶ Andrea Calvo,¹⁷ Letizia Mazzini,¹⁸ Nilo Riva,¹⁹ Jessica Mandrioli,²⁰ Claudia Caponnetto,²¹ Stefania Battistini,²² Paolo Volanti,¹⁶ Vincenzo La Bella,²³ Francesca L. Conforti,²⁴ Giuseppe Borghero,²⁵ Sonia Messina,²⁶ Isabella L. Simone,²⁷ Francesca Trojsi,²⁸ Fabrizio Salvi,²⁹ Francesco O. Logullo,³⁰ Sandra D'Alfonso,³¹ Lucia Corrado,³¹ Margherita Capasso,³² Luigi Ferrucci,³³ Genomic Translation for ALS Care (GTAC) Consortium, Cristiane de Araujo Martins Moreno,³⁴ Sitharthan Kamalakaran,³⁵ David B. Goldstein,³⁵ ALS Sequencing Consortium, Aaron D. Gitler,³⁶ Tim Harris,³⁷ Richard M. Myers,³⁸ NYGC ALS Consortium, Hemali Phatnani,³⁹ Rajeewa Lochan Musunuri,⁴⁰ Uday Shankar Evani,⁴⁰ Avinash Abhyankar,⁴⁰ Michael C. Zody,⁴⁰ Answer ALS Foundation, Julia Kaye,⁴¹ Steven Finkbeiner,^{41,42}

(Author list continued on next page)

¹Neuromuscular Diseases Research Section, Laboratory of Neurogenetics, National Institute on Aging, NIH, Porter Neuroscience Research Center, Bethesda, MD 20892, USA

²Department of Neurology, University of Massachusetts Medical School, Worcester, MA 01605, USA

³Department of Neuroscience, Icahn School of Medicine at Mount Sinai, New York, NY 10029, USA

⁴Ronald M. Loeb Center for Alzheimer's Disease, Icahn School of Medicine at Mount Sinai, New York, NY 10029, USA

⁵Department of Neurology and Laboratory of Neuroscience, IRCCS Istituto Auxologico Italiano, Milan, Italy

⁶Department of Pathophysiology and Transplantation, "Dino Ferrari" Center – Università degli Studi di Milano, Milan 20122, Italy

⁷Molecular Genetics Section, Laboratory of Neurogenetics, National Institute on Aging, NIH, Porter Neuroscience Research Center, Bethesda, MD 20892, USA

⁸Department of Computer Science, University of Illinois at Urbana-Champaign, Urbana, IL, USA

⁹Data Tecnica International, Glen Echo, MD, USA

¹⁰Department of Neurology, Brain Center Rudolf Magnus, University Medical Center Utrecht, Utrecht, the Netherlands

¹¹Neurodegenerative Diseases Research Unit, National Institute of Neurological Disorders and Stroke, NIH, Bethesda, MD 20892, USA

¹²Maurice Wohl Clinical Neuroscience Institute, Department of Basic and Clinical Neuroscience, King's College London, London SE5 9RS, UK

¹³Institute of Genomic Medicine, Catholic University, Roma, Italy

¹⁴Sobell Department of Motor Neuroscience and Movement Disorders, University College London, Institute of Neurology, London, UK

¹⁵Genetics and Pharmacogenomics, MRL, Merck & Co., Inc., Boston, MA 02115, USA

¹⁶ALS Center, Salvatore Maugeri Foundation, IRCCS, Mistretta, Messina, Italy

¹⁷"Rita Levi Montalcini" Department of Neuroscience, University of Turin, Turin, Italy

¹⁸"Maggiore della Carità" University Hospital, Novara, Italy

(Affiliations continued on next page)

SUMMARY

To identify novel genes associated with ALS, we undertook two lines of investigation. We carried out a genome-wide association study comparing 20,806 ALS cases and 59,804 controls. Independently, we performed a rare variant burden analysis comparing 1,138 index familial ALS cases and 19,494 controls. Through both approaches, we identified *kinesin family member 5A (KIF5A)* as a novel gene associated with ALS. Interestingly, mutations predominantly in the N-terminal motor domain of KIF5A are causative for two neurodegenerative diseases: hereditary spastic paraplegia (SPG10) and Charcot-Marie-Tooth type 2 (CMT2). In contrast, ALS-associated mutations are primarily located at the C-terminal

cargo-binding tail domain and patients harboring loss-of-function mutations displayed an extended survival relative to typical ALS cases. Taken together, these results broaden the phenotype spectrum resulting from mutations in *KIF5A* and strengthen the role of cytoskeletal defects in the pathogenesis of ALS.

INTRODUCTION

Amyotrophic lateral sclerosis (ALS; OMIM: 05400) is a neurodegenerative disorder clinically characterized by rapidly progressive muscle weakness and death due to respiratory failure, typically within 2 to 4 years of symptom onset (van Es et al., 2017). Although ALS is perceived as being rare, approximately 6,000 Americans die annually from the condition



Stacia K. Wyman,⁴¹ Alex LeNail,⁴³ Leandro Lima,⁴¹ Ernest Fraenkel,^{43,44} Clive N. Svendsen,^{45,46} Leslie M. Thompson,^{47,48} Jennifer E. Van Eyk,⁴⁹ James D. Berry,^{50,51} Timothy M. Miller,⁵² Stephen J. Kolb,⁵³ Merit Cudkowicz,^{50,51} Emily Baxi,⁵⁴ Clinical Research in ALS and Related Disorders for Therapeutic Development (CREATe) Consortium, Michael Benatar,⁵⁵ J. Paul Taylor,^{56,57} Evadnie Rampersaud,⁵⁸ Gang Wu,⁵⁸ Joanne Wu,⁵⁵ SLAGEN Consortium, Giuseppe Lauria,⁵⁹ Federico Verde,⁵ Isabella Fogh,^{5,12} Cinzia Tiloca,⁵ Giacomo P. Comi,⁶⁰ Gianni Soraru,⁶¹ Cristina Cereda,⁶² French ALS Consortium, Philippe Corcia,⁶³ Hannu Laaksovirta,⁶⁴ Liisa Myllykangas,⁶⁵ Lilja Jansson,⁶⁴ Miko Valori,⁶⁴ John Ealing,⁶⁶ Hisham Hamdalla,⁶⁶ Sara Rollinson,⁶⁷ Stuart Pickering-Brown,⁶⁷ Richard W. Orrell,⁶⁸ Katie C. Sidle,⁶⁹ Andrea Malaspina,⁷⁰ John Hardy,⁶⁹ Andrew B. Singleton,⁷ Janel O. Johnson,¹ Sampath Arepalli,⁷¹ Peter C. Sapp,² Diane McKenna-Yasek,² Meraida Polak,⁷² Seneshaw Asress,⁷² Safa Al-Sarraj,¹² Andrew King,¹² Claire Troakes,¹² Caroline Vance,¹² Jacqueline de Belleruche,⁷³ Frank Baas,⁷⁴ Anneloor L.M.A. ten Asbroek,⁷⁵ José Luis Muñoz-Blanco,⁷⁶ Dena G. Hernandez,⁷¹ Jinhui Ding,⁷⁷ J. Raphael Gibbs,⁷⁷ Sonja W. Scholz,^{11,54} Mary Kay Floeter,⁷⁸ Roy H. Campbell,⁸

(Author list continued on next page)

¹⁹Department of Neurology, Institute of Experimental Neurology, Division of Neuroscience, San Raffaele Scientific Institute, Milan, Italy

²⁰Department of Neuroscience, St. Agostino Estense Hospital, Azienda Ospedaliero Universitaria di Modena, Modena, Italy

²¹Department of Neurosciences, Ophthalmology, Genetics, Rehabilitation, Maternal and Child Health, Ospedale Policlinico San Martino, Genoa, Italy

²²Department of Medical, Surgical and Neurological Sciences, University of Siena, Siena, Italy

²³ALS Clinical Research Center, University of Palermo, Palermo, Italy

²⁴Institute of Neurological Sciences, National Research Council, Mangone, Cosenza, Italy

²⁵Department of Neurology, Azienda Universitario Ospedaliera di Cagliari and University of Cagliari, Cagliari, Italy

²⁶Department of Clinical and Experimental Medicine, University of Messina and Nemo Sud Clinical Center for Neuromuscular Diseases, Aurora Foundation, Messina, Italy

²⁷Department of Basic Medical Sciences, Neurosciences and Sense Organs, University of Bari, Bari, Italy

²⁸Department of Medical, Surgical, Neurological, Metabolic and Aging Sciences, University of Campania “Luigi Vanvitelli,” Naples, Italy

²⁹“Il Bene” Center for Immunological and Rare Neurological Diseases at Bellaria Hospital, IRCCS, Istituto delle Scienze Neurologiche, Bologna, Italy

³⁰Neurological Clinic, Marche Polytechnic University, Ancona, Italy

³¹Department of Health Sciences, University of Eastern Piedmont, Novara, Italy

³²Department of Neurology, University of Chieti, Chieti, Italy

³³Longitudinal Studies Section, Clinical Research Branch, National Institute on Aging, NIH, Baltimore, MD 21224, USA

³⁴Department of Neurology, Columbia University, New York, NY 10032, USA

³⁵Institute for Genomic Medicine, Columbia University, New York, NY 10032, USA

³⁶Department of Genetics, Stanford University School of Medicine, Stanford, CA 94305, USA

³⁷Bioerativ, 225 2nd Avenue, Waltham, MA 02145, USA

³⁸HudsonAlpha Institute for Biotechnology, Huntsville, AL 35806, USA

³⁹Center for Genomics of Neurodegenerative Diseases (CGND), New York Genome Center, New York, NY, USA

⁴⁰Computational Biology, New York Genome Center, New York, NY, USA

⁴¹Gladstone Institute of Neurological Disease, San Francisco, CA, USA

⁴²Departments of Neurology and Physiology, University of California, San Francisco, San Francisco, CA, USA

⁴³Department of Biological Engineering, Massachusetts Institute of Technology, 77 Massachusetts Avenue, Cambridge, MA 02139, USA

⁴⁴Broad Institute, 415 Main Street, Cambridge, MA 02142, USA

⁴⁵Board of Governors Regenerative Medicine Institute, Cedars-Sinai Medical Center, Los Angeles, CA 90048, USA

⁴⁶Department of Biomedical Sciences, Cedars-Sinai Medical Center, Los Angeles, CA 90048, USA

⁴⁷Department of Neurobiology and Behavior, Institute of Memory Impairment and Neurological Disorders, University of California, Irvine, Irvine, CA 92697, USA

⁴⁸Department of Psychiatry and Human Behavior, Institute of Memory Impairment and Neurological Disorders, University of California, Irvine, Irvine, CA 92697, USA

⁴⁹The Heart Institute and Department of Medicine, Cedars-Sinai Medical Center, Los Angeles, CA, USA

⁵⁰Harvard Medical School, Department of Neurology, Massachusetts General Hospital (MGH), Boston, MA, USA

⁵¹Neurological Clinical Research Institute (NCRI), Massachusetts General Hospital, Boston, MA, USA

⁵²Department of Neurology, Washington University School of Medicine, St. Louis, MO, USA

⁵³Department of Neurology, The Ohio State University Wexner Medical Center, Columbus, OH, USA

⁵⁴Department of Neurology, Johns Hopkins University, Baltimore, MD 21287, USA

⁵⁵Department of Neurology, University of Miami, Miami, FL 33136, USA

⁵⁶Howard Hughes Medical Institute, Chevy Chase, MD 20815, USA

⁵⁷Department of Cell and Molecular Biology, St. Jude Children’s Research Hospital, Memphis, TN 38105, USA

⁵⁸Department of Computational Biology, St. Jude Children’s Research Hospital, Memphis, TN 38105, USA

⁵⁹3rd Neurology Unit, Motor Neuron Diseases Center, Fondazione IRCCS Istituto Neurologico “Carlo Besta,” and Department of Biomedical and Clinical Sciences “Luigi Sacco,” University of Milan, Milan, Italy

(Affiliations continued on next page)

Francesco Landi,⁷⁹ Robert Bowser,⁸⁰ Stefan M. Pulst,⁸¹ John M. Ravits,⁸² Daniel J.L. MacGowan,⁸³ Janine Kirby,⁸⁴ Erik P. Piore,⁸⁵ Roger Pamphlett,⁸⁶ James Broach,⁸⁷ Glenn Gerhard,⁸⁸ Travis L. Dunckley,⁸⁹ Christopher B. Brady,^{90,91} Neil W. Kowall,⁹² Juan C. Troncoso,⁹³ Isabelle Le Ber,⁹⁴ Kevin Mouzat,^{95,96} Serge Lumbroso,^{95,96} Terry D. Heiman-Patterson,^{97,98} Freya Kamel,⁹⁹ Ludo Van Den Bosch,^{100,101} Robert H. Baloh,¹⁰² Tim M. Strom,^{103,104} Thomas Meitinger,^{103,104,105} Aleksey Shatunov,¹² Kristel R. Van Eijk,¹⁰ Mamede de Carvalho,^{106,107} Maarten Kooyman,¹⁰⁸ Bas Middelkoop,¹⁰ Matthieu Moisse,^{100,101} Russell L. McLaughlin,¹⁰⁹ Michael A. Van Es,¹⁰ Markus Weber,¹¹⁰ Kevin B. Boylan,¹¹¹ Marka Van Blitterswijk,¹¹² Rosa Rademakers,¹¹² Karen E. Morrison,¹¹³ A. Nazli Basak,¹¹⁴ Jesús S. Mora,¹¹⁵ Vivian E. Drory,¹¹⁶ Pamela J. Shaw,⁸⁴ Martin R. Turner,¹¹⁷ Kevin Talbot,¹¹⁷ Orla Hardiman,¹¹⁸ Kelly L. Williams,¹¹⁹ Jennifer A. Fifita,¹¹⁹ Garth A. Nicholson,^{119,120} Ian P. Blair,¹¹⁹ Guy A. Rouleau,¹²¹ Jesús Esteban-Pérez,¹²² Alberto García-Redondo,¹²² Ammar Al-Chalabi,¹² Project MinE ALS Sequencing Consortium, Ekaterina Rogaeva,¹²³ Lorne Zinman,¹²⁴ Lyle W. Ostrow,⁵⁴ Nicholas J. Maragakis,⁵⁴ Jeffrey D. Rothstein,⁵⁴

(Author list continued on next page)

⁶⁰Neurology Unit, IRCCS Foundation Ca' Granda Ospedale Maggiore Policlinico, Milan, Italy

⁶¹Department of Neurosciences, University of Padova, Padova, Italy

⁶²Genomic and Post-Genomic Center, IRCCS Mondino Foundation, Pavia, Italy

⁶³ALS Center, CHU Bretonneau, Tours University, Tours, France

⁶⁴Department of Neurology, Helsinki University Hospital and Molecular Neurology Programme, Biomedicum, University of Helsinki, Helsinki FIN-02900, Finland

⁶⁵Department of Pathology, University of Helsinki and Helsinki University Hospital, Helsinki, Finland

⁶⁶Greater Manchester Neurosciences Centre, Salford Royal NHS Foundation Trust, Salford M6 8HD, UK

⁶⁷Faculty of Human and Medical Sciences, University of Manchester, Manchester M13 9PT, UK

⁶⁸Department of Clinical Neuroscience, Institute of Neurology, University College London, London NW3 2PG, UK

⁶⁹Department of Molecular Neuroscience and Reta Lila Weston Laboratories, Institute of Neurology, University College London, Queen Square House, London WC1N 3BG, UK

⁷⁰Centre for Neuroscience and Trauma, Blizard Institute, Queen Mary University of London, NorthEast London and Essex Regional Motor Neuron Disease Care Centre, London E1 2AT, UK

⁷¹Genomics Technology Group, Laboratory of Neurogenetics, National Institute on Aging, NIH, Porter Neuroscience Research Center, Bethesda, MD 20892, USA

⁷²Department of Neurology, Emory University School of Medicine, Atlanta, GA 30322, USA

⁷³Division of Brain Sciences, Department of Medicine, Imperial College London, London W120NN, UK

⁷⁴Department of Clinical Genetics, Leiden University Medical Center, Leiden, the Netherlands

⁷⁵Department of Neurogenetics and Neurology, Academic Medical Centre, Amsterdam, the Netherlands

⁷⁶ALS-Neuromuscular Unit, Hospital General Universitario Gregorio Marañón, IISGM, Madrid, Spain

⁷⁷Computational Biology Group, Laboratory of Neurogenetics, National Institute on Aging, NIH, Porter Neuroscience Research Center, Bethesda, MD 20892, USA

⁷⁸Motor Neuron Disorders Unit, National Institute of Neurological Disorders and Stroke, NIH, Bethesda, MD 20892, USA

⁷⁹Center for Geriatric Medicine, Department of Geriatrics, Neurosciences and Orthopedics, Catholic University of Sacred Heart, Rome 00168, Italy

⁸⁰Division of Neurology, Barrow Neurological Institute, Phoenix, AZ, USA

⁸¹Department of Neurology, University of Utah School of Medicine, Salt Lake City, UT, USA

⁸²Department of Neuroscience, University of California, San Diego, La Jolla, CA, USA

⁸³Mount Sinai Beth Israel Hospital, Mount Sinai School of Medicine, New York, NY, USA

⁸⁴Sheffield Institute for Translational Neuroscience (SITraN), University of Sheffield, Sheffield, UK

⁸⁵Department of Neurology, Neuromuscular Center, Neurological Institute, Cleveland Clinic, Cleveland, OH, USA

⁸⁶Discipline of Pathology, Brain and Mind Centre, The University of Sydney, 94 Mallett Street, Camperdown, NSW 2050, Australia

⁸⁷Department of Biochemistry, Penn State College of Medicine, Hershey, PA, USA

⁸⁸Department of Pathology, Penn State College of Medicine, Hershey, PA, USA

⁸⁹Neurogenomics Division, Translational Genomics Research Institute, Phoenix, AZ, USA

⁹⁰Research and Development Service, Veterans Affairs Boston Healthcare System, Boston, MA, USA

⁹¹Department of Neurology, Program in Behavioral Neuroscience, Boston University School of Medicine, Boston, MA, USA

⁹²Neurology Service, VA Boston Healthcare System and Boston University Alzheimer's Disease Center, Boston, MA 02130, USA

⁹³Departments of Pathology and Neurology, Johns Hopkins University School of Medicine, Baltimore, MD 21205, USA

⁹⁴Sorbonne Universités, UPMC Univ Paris 06, Inserm, CNRS, Institut du Cerveau et la Moelle (ICM), Assistance Publique Hôpitaux de Paris (AP-HP) – Hôpital Pitié-Salpêtrière, Paris, France

⁹⁵INM, University Montpellier, Montpellier, France

⁹⁶Department of Biochemistry, CHU Nîmes, Nîmes, France

⁹⁷Department of Neurology, Drexel University College of Medicine, Philadelphia, PA, USA

⁹⁸Department of Neurology, Lewis Katz School of Medicine, Temple University, Philadelphia, PA, USA

⁹⁹Epidemiology Branch, National Institute of Environmental Health Sciences, Durham, NC 27709, USA

(Affiliations continued on next page)

Zachary Simmons,¹²⁵ Johnathan Cooper-Knock,⁸⁴ Alexis Brice,⁹⁴ Stephen A. Goutman,¹²⁶ Eva L. Feldman,¹²⁶ Summer B. Gibson,⁸¹ Franco Taroni,¹²⁷ Antonia Ratti,^{5,6} Cinzia Gellera,¹²⁷ Philip Van Damme,^{100,101,128} Wim Robberecht,^{100,101,128} Pietro Fratta,¹⁴ Mario Sabatelli,¹²⁹ Christian Lunetta,¹³⁰ Albert C. Ludolph,¹³¹ Peter M. Andersen,¹³² Jochen H. Weishaupt,¹³¹ William Camu,¹³³ John Q. Trojanowski,¹³⁴ Viviana M. Van Deerlin,¹³⁴ Robert H. Brown, Jr.,² Leonard H. van den Berg,¹⁰ Jan H. Veldink,¹⁰ Matthew B. Harms,³⁴ Jonathan D. Glass,⁷² David J. Stone,^{135,137} Pentti Tienari,^{64,137} Vincenzo Silani,^{5,6,137} Adriano Chiò,^{17,136,137} Christopher E. Shaw,^{12,137} Bryan J. Traynor,^{1,54,137,*} and John E. Landers^{2,137,138,*}

¹⁰⁰KU Leuven – University of Leuven, Department of Neurosciences, Experimental Neurology and Leuven Research Institute for Neuroscience and Disease (LIND), B-3000 Leuven, Belgium

¹⁰¹VIB, Center for Brain and Disease Research, Laboratory of Neurobiology, Leuven, Belgium

¹⁰²Department of Neurology, Cedars-Sinai Medical Center, Los Angeles, CA, USA

¹⁰³Institute of Human Genetics, Technische Universität München, Munich, Germany

¹⁰⁴Institute of Human Genetics, Helmholtz Zentrum München, German Research Center for Environmental Health, Neuherberg, Germany

¹⁰⁵Munich Cluster for Systems Neurology (SyNergy), Munich, Germany

¹⁰⁶Institute of Physiology, Institute of Molecular Medicine, Faculty of Medicine, University of Lisbon, Lisbon, Portugal

¹⁰⁷Department of Neurosciences, Hospital de Santa Maria-CHLN, Lisbon, Portugal

¹⁰⁸SURFsara, Amsterdam, the Netherlands

¹⁰⁹Population Genetics Laboratory, Smurfit Institute of Genetics, Trinity College Dublin, Dublin, Republic of Ireland

¹¹⁰Neuromuscular Diseases Center/ALS Clinic, Kantonsspital St. Gallen, St. Gallen, Switzerland

¹¹¹Department of Neurology, Mayo Clinic Florida, Jacksonville, FL 32224, USA

¹¹²Department of Neuroscience, Mayo Clinic, Jacksonville, FL, USA

¹¹³Faculty of Medicine, University of Southampton, Southampton, UK

¹¹⁴Suna and Inan Kırac Foundation, Neurodegeneration Research Laboratory, Bogazici University, Istanbul, Turkey

¹¹⁵ALS Unit/Neurology, Hospital San Rafael, Madrid, Spain

¹¹⁶Department of Neurology, Tel-Aviv Sourasky Medical Centre, Tel-Aviv, Israel

¹¹⁷Nuffield Department of Clinical Neurosciences, University of Oxford, Oxford, UK

¹¹⁸Academic Unit of Neurology, Trinity Biomedical Sciences Institute, Trinity College Dublin, Dublin, Republic of Ireland

¹¹⁹Centre for MND Research, Faculty of Medicine and Health Sciences, Macquarie University, Sydney, NSW 2109, Australia

¹²⁰ANZAC Research Institute, Concord Hospital, University of Sydney, Sydney, NSW 2139, Australia

¹²¹Montreal Neurological Institute, Department of Neurology and Neurosurgery, McGill University, Montreal, QC, Canada

¹²²Unidad de ELA, Instituto de Investigación Hospital 12 de Octubre de Madrid, SERMAS, and Centro de Investigación Biomédica en Red de Enfermedades Raras (CIBERER U-723), Madrid, Spain

¹²³Tanz Centre for Research of Neurodegenerative Diseases, Division of Neurology, Department of Medicine, University of Toronto, Toronto, ON M5S 3H2, Canada

¹²⁴Division of Neurology, Department of Internal Medicine, Sunnybrook Health Sciences Centre, University of Toronto, Toronto, ON M4N 3M5, Canada

¹²⁵Department of Neurology, Penn State Hershey Medical Center, Hershey, PA, USA

¹²⁶Department of Neurology, University of Michigan, Ann Arbor, MI, USA

¹²⁷Unit of Genetics of Neurodegenerative and Metabolic Diseases, Fondazione IRCCS Istituto Neurologico “Carlo Besta,” Milan 20133, Italy

¹²⁸University Hospitals Leuven, Department of Neurology, Leuven, Belgium

¹²⁹Centro Clinico NeMO, Institute of Neurology, Catholic University, Largo F. Vito 1, 00168 Rome, Italy

¹³⁰NEuroMuscular Omnicenter (NEMO), Serena Onlus Foundation, Milan, Italy

¹³¹Neurology Department, Ulm University, Albert-Einstein-Allee 11, 89081 Ulm, Germany

¹³²Department of Pharmacology and Clinical Neuroscience, Umeå University, Umeå SE-90185, Sweden

¹³³ALS Center, CHU Gui de Chauliac, University of Montpellier, Montpellier, France

¹³⁴Department of Pathology and Laboratory Medicine, University of Pennsylvania, Philadelphia, PA, USA

¹³⁵Genetics and Pharmacogenomics, MRL, Merck & Co., Inc., West Point, PA 19486, USA

¹³⁶Neuroscience Institute of Torino, Turin 10124, Italy

¹³⁷These authors contributed equally

¹³⁸Lead Contact

*Correspondence: bryan.traynor@nih.gov (B.J.T.), john.landiers@umassmed.edu (J.E.L.)

<https://doi.org/10.1016/j.neuron.2018.02.027>

(Hirtz et al., 2007). Furthermore, the number of ALS cases across the globe will increase to nearly 400,000 in 2040, predominantly due to aging of the population (Arthur et al., 2016). This increase is anticipated to place an enormous socio-economic burden on global healthcare systems, in particular because the annual healthcare cost per patient with ALS is among the highest for any neurological disease (Gladman and Zinman, 2015).

Approximately 10% of ALS cases display a family history (FALS), whereas the remaining 90% of ALS cases are sporadic (SALS) in nature. Driven in large part by advances in genotyping and sequencing technology, the genetic etiology of two-thirds of FALS cases and about 10% of SALS cases is now known (Chia et al., 2018; Renton et al., 2014). Mutations in *SOD1* were the first identified cause of ALS (Rosen et al., 1993), contributing to ~20% of FALS and ~2% of SALS. More recently, pathogenic

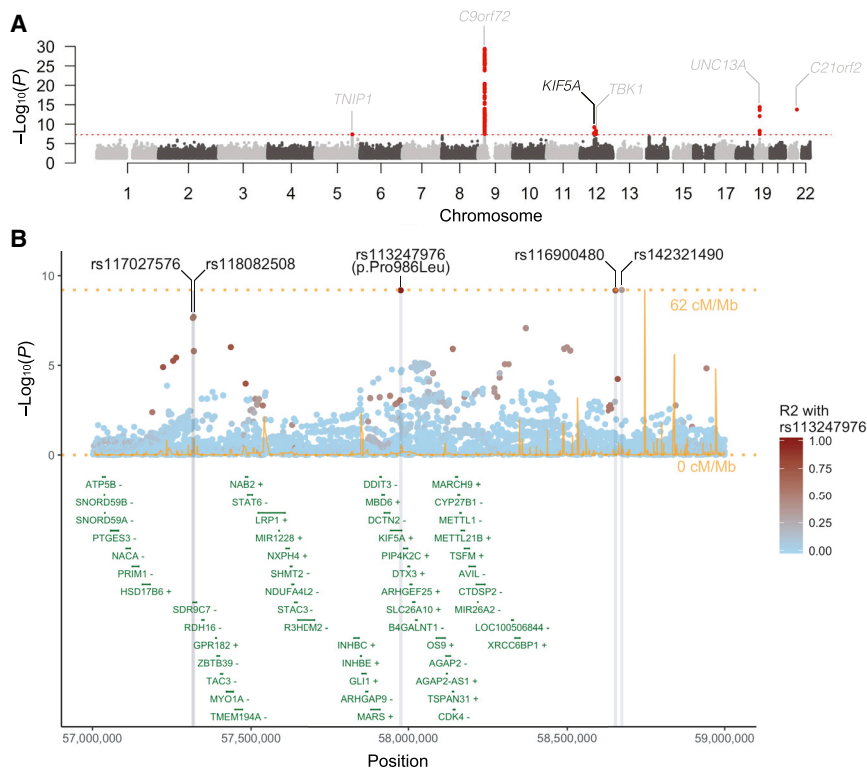


Figure 1. Identification of Association between *KIF5A* Locus and ALS Risk through GWAS

(A) Manhattan plot showing p values from the discovery set GWAS. Analysis of a combined set of 20,806 cases and 59,804 controls is shown. The dashed red line denotes the threshold for genome-wide significance after multiple test correction ($p < 5.0 \times 10^{-8}$). Five previously reported ALS-associated loci are labeled in gray and one novel loci, containing the *KIF5A* gene, is labeled in black. (B) Regional association plot of the *KIF5A* locus. Recombination rates are from HapMap phase 2 European ancestry samples (CEU) from the November 2010 release of the 1000 Genomes Project dataset. R^2 of the p.Pro986Leu (rs113247976) with additional SNPs achieving genome-wide significance was 0.544 (rs117027576), 0.544 (rs118082508), 0.741 (rs116900480), and 0.347 (rs142321490).

genes continue to provide valuable insight into ALS pathogenesis. For example, the product of the risk factor *TBK1* is known to interact with the product of ALS-associated gene *OPTN*, further solidifying the role of autophagy

hexanucleotide repeat expansions located within the first intron of the *C9orf72* gene on chromosome 9p21 were identified as the most common cause of both FALS (~40%) and SALS (~7%) (DeJesus-Hernandez et al., 2011; Renton et al., 2011). Interestingly, this repeat expansion contributes to ~10% of all frontotemporal dementia (FTD) cases, thus genetically explaining much of the overlap between these clinical syndromes (Majounie et al., 2012). As a result of these major discoveries, there are several ongoing efforts toward directed silencing of these mutant genes, which could result in a therapeutic treatment for up to 10% of all ALS cases and for a similar portion of FTD cases.

In addition to the insights provided by each novel ALS gene, the collective knowledge gained from genetic factors provides a more comprehensive understanding of the interacting pathways underlying motor neuron degeneration. For example, the identification of ALS genes has revealed at least three pathways believed to contribute to the development of ALS: (1) RNA metabolism (based on the observation of mutations in *C9orf72*, *TDP-43*, *FUS*, *HNRNPA1*, and *MATR3*), (2) protein homeostasis (*UBQLN2*, *VCP*, *OPTN*, and *VAPB*), and (3) cytoskeletal dynamics (*PFN1*, *TUBA4A*, and *DCTN1*) (Chia et al., 2018; Robbercht and Eykens, 2015; Taylor et al., 2016). Understanding the mechanisms leading to disease pathogenesis again provides targets for therapeutic intervention that may be applicable to all forms of ALS.

Due to the decreased accessibility of multiple affected family members with unknown genetic etiology, there has been an increased focus on the identification of ALS-associated genes with moderate to low impact. Despite their lower effect, such

and protein homeostasis in disease development (Cirulli et al., 2015; Freischmidt et al., 2015; Maruyama et al., 2010; Morton et al., 2008). Similarly, the risk factor *NEK1*, identified through a rare variant burden analysis (RVB) of index FALS (i.e., one affected sample per family), is a known binding partner of *C21orf2*, an ALS risk factor found through genome-wide association studies (GWASs) (Cirulli et al., 2015; Kenna et al., 2016; Malovannaya et al., 2011; van Rheenen et al., 2016). The interaction of these two proteins is required for efficient DNA damage repair (Fang et al., 2015), a pathway that is becoming increasingly implicated as a contributing factor in ALS and other neurodegenerative diseases (Coppedè and Migliore, 2015; Lopez-Gonzalez et al., 2016; Madabhushi et al., 2014; Wang et al., 2013).

RESULTS

GWASs Identify *KIF5A* as a Novel ALS-Associated Gene

To identify new susceptibility loci operating in ALS, we undertook a large-scale GWAS involving 12,663 patients diagnosed with ALS and 53,439 control subjects (Tables S1 and S2). Our data were then incorporated into a meta-analysis with a recently published GWAS involving 12,577 ALS cases and 23,475 control subjects (van Rheenen et al., 2016). After imputation and quality-control measures (see STAR Methods and Figure S1 for the workflow and Figure S2 for the multidimensional scaling plot), 10,031,630 genotyped and imputed variants from 20,806 ALS cases and 59,804 control samples were available for association analysis (Figure 1A). Quantile-quantile plots did not show evidence of significant population stratification ($\lambda_{1000} = 1.001$;

Figure S3). SNPs achieving genome-wide significance ($p < 5.0 \times 10^{-8}$) are listed in Tables 1 and S3 and suggestive loci with SNPs associated at $p < 5.0 \times 10^{-7}$ are listed in Table S4.

Our analysis revealed five previously identified loci that achieved genome-wide significance (loci including *TNIP1*, *C9orf72*, *TBK1*, *UNC13A*, and *C21orf2*) (Benyamin et al., 2017; Laaksovirta et al., 2010; Shatunov et al., 2010; van Es et al., 2009; van Rheenen et al., 2016). In addition, we observed a strong association signal for five SNPs in linkage disequilibrium on chromosome 12q14.1 that reached genome-wide statistical significance spanning a region of several hundred kilobases (Table 1; Figure 1B). Of the five SNPs, two of them resided in close proximity to each other within a large intergenic region and two in proximity to *short-chain dehydrogenase/reductase family 9C member 7* (*SDR9C7*), a gene expressed primarily in skin. However, one SNP (rs113247976) results in a p.Pro986Leu coding change within the *kinesin family member 5A* (*KIF5A*) gene ($p = 6.4 \times 10^{-10}$, odds ratio [OR] = 1.38, 95% CI = 1.24–1.53; Figure 2). The case:control allele frequencies for the combined discovery cohort were 2.07%:1.55% and genotype counts were 5: 529: 12,043 to 7: 786: 22,682 (homozygotes alternative allele: heterozygotes: homozygous reference allele; Figure 2). Calculations based on our cohort size as well as the OR and allele frequency of rs113247976 result in an ~99.5% power to detect this as an ALS-associated SNP.

Rare Variant Burden Analysis Identifies *KIF5A* as an ALS Gene

In an independent line of investigation, we attempted to identify novel ALS genes through exome-wide RVB. In brief, RVB compares the frequency of variants within each gene below a user-defined frequency threshold in a case-control cohort. As the last two ALS-associated genes identified by this methodology (*TBK1* and *NEK1*) displayed an increased frequency of loss-of-function (LOF) variants, we focused our initial analysis on such variants (consisting of nonsense and predicted splice altering) (Cirulli et al., 2015; Freischmidt et al., 2015; Kenna et al., 2016).

Toward this end, we performed RVB testing for association of LOF variants in a cohort of 1,138 index FALS cases and 19,494 controls, after applying quality-control filters (Experimental Model and Subject Details; Figure S4; Tables S5 and S6). Genes displaying $p < 5.0 \times 10^{-4}$ are shown in Table 2. The previously identified ALS genes, *TBK1* ($p = 5.58 \times 10^{-7}$, OR = 15.11, 95% CI = 5.81–38.69) and *NEK1* ($p = 1.68 \times 10^{-6}$, OR = 6.64, 95% CI = 3.32–12.51), yielded strong associations with ALS, reaching exome-wide significance (Figure 3). In addition, we observed a single novel gene reaching exome-wide significance, *KIF5A* ($p = 5.55 \times 10^{-7}$; OR = 32.07, 95% CI = 9.05–135.27). Within this gene, we observed 6 LOF variants in our 1,138 cases (0.53%) compared to 3 such variants in our comparison cohort of 19,494 controls (0.015%; Table 2). There was no evidence of genomic inflation ($\lambda = 0.93$; Figure S5), sequencing center or other sub-cohort bias (Figure S6), or call rate bias (Figure S7) in our analysis. Of the index FALS cases carrying *KIF5A* LOF mutations, we obtained DNA from two siblings of the proband carrying a c.2993-3C>T, exon 27 - 5' splice junction variant and from a sibling of a different proband carrying a c.3020+2T>A, exon 27 - 3' splice junction variant. These variants

segregated with disease within each of these families. Sanger sequencing validated all identified LOF variants containing samples in the discovery set and affected relatives.

Interestingly, when we investigated the location of the six ALS-associated variants present in *KIF5A*, all occurred within a 34 bp stretch of DNA and were predicted to affect splicing of exon 27, which encodes amino acids 998–1007 (Table 3; Figure 4A). Five of the six variants were located on sequential base pairs on the 3' end of the exon, whereas one was located on the 5' end of the exon. We used the application ASSEDA (Automated Splice Site and Exon Definition Analyses) to predict any mutant mRNA splice isoforms resulting from these variants (Tompson et al., 2007). This algorithm was chosen as it is known to have high performance in splice prediction (Caminsky et al., 2014). ASSEDA predicted a complete skipping of exon 27 for all variants, yielding a transcript with a frameshift at coding amino acid 998, the deletion of the normal C-terminal 34 amino acids of the cargo-binding domain, and the extension of an aberrant 39 amino acids to the C terminus (Table 3; Figures 4B and 4C). The presence of transcripts with skipped exon 27 was demonstrated by performing RT-PCR in two patients carrying exon 27 - 3' splice junction variants (c.3020+2T>A and c.3020+1G>A) using RNA from lymphoblasts and peripheral blood mononuclear cells, respectively. This splice form was not detected in four control lines (Figure 4D). Sequence analysis of the smaller RT-PCR products obtained from the patient cells confirmed the exon 26–28 splicing event. Material for RT-PCR was not available for any other patient carrying a *KIF5A* LOF variant.

Our initial RVB was restricted to single nucleotide variants due to the limited sensitivity and comparatively high false-positive rates associated with identifying small insertions and deletions (indels) within exome sequencing data (Fang et al., 2014). Based on our discovery of increased LOF variants within *KIF5A*, we re-evaluated this region for the presence of indels. Our analysis revealed two (0.026%) indels within our cohort of 1,138 FALS cases, compared to zero (0%) indels among 19,494 control samples. Both of these indels (p.Asp996fs and p.Asn999fs) resulted in a frameshift of the *KIF5A* protein coding sequence, and were located close to the splice junction variants that we previously observed to cause skipping of exon 27, resulting in a frameshift at amino acid 998 (Table 3). Sanger sequencing confirmed the presence of both indels. Combining the results of the single nucleotide and indel variant analysis yielded a highly significant p of 3.8×10^{-9} (OR = 41.16, 95% CI = 12.61–167.57). We failed to detect any signals of RVB association for rare missense variants across *KIF5A* or within any sub-domain of the gene (Table S8).

Replication Analysis of rs113247976 and LOF Variants in *KIF5A*

Given the strong signal of the missense variant identified by our GWAS (p.Pro986Leu, rs113247976) and its close proximity to the LOF variants identified by our RVB (amino acids 996–999), we attempted to replicate its association with ALS by analyzing additional cohorts. To accomplish this, we evaluated this variant in a cohort of 4,159 ALS cases and 18,650 controls that were non-overlapping with our GWAS discovery analysis

Table 1. SNPs Achieving Genome-wide Significance in the Discovery GWAS

SNP Information				Present Study (8,229 Cases/36,329 Controls)				Van Rheenen et al. (12,577 Cases/23,475 Controls)				Combined Discovery Set (20,806 Cases/59,804 Controls)			
SNP	Chr	Position	Gene	Case MAF	Control MAF	OR [95% CI]	p	Case MAF	Control MAF	OR [95% CI]	p	Case MAF	Control MAF	OR [95% CI]	p
Novel Loci															
rs117027576	12	57,316,603	<i>KIF5A</i>	1.55%	1.27%	1.45 [1.20–1.76]	1.1×10^{-4}	1.98%	1.59%	1.33 [1.16–1.53]	4.3×10^{-5}	1.81%	1.40%	1.37 [1.23–1.54]	2.3×10^{-8}
rs118082508	12	57,318,819	<i>KIF5A</i>	1.56%	1.28%	1.45 [1.20–1.76]	1.0×10^{-4}	1.98%	1.60%	1.33 [1.16–1.53]	3.8×10^{-5}	1.81%	1.41%	1.37 [1.23–1.54]	2.0×10^{-8}
rs113247976*	12	57,975,700	<i>KIF5A</i>	1.83%	1.42%	1.46 [1.23–1.74]	9.2×10^{-6}	2.14%	1.70%	1.33 [1.17–1.52]	1.1×10^{-5}	2.02%	1.53%	1.38 [1.24–1.53]	6.4×10^{-10}
rs116900480	12	58,656,105	<i>KIF5A</i>	1.75%	1.46%	1.42 [1.21–1.68]	1.9×10^{-5}	2.08%	1.66%	1.34 [1.18–1.53]	7.1×10^{-6}	1.95%	1.54%	1.37 [1.24–1.52]	6.6×10^{-10}
rs142321490	12	58,676,132	<i>KIF5A</i>	1.79%	1.48%	1.43 [1.21–1.68]	1.5×10^{-5}	2.08%	1.66%	1.34 [1.18–1.53]	8.0×10^{-6}	1.97%	1.55%	1.37 [1.24–1.52]	6.1×10^{-10}
Previously Published Loci															
rs10463311	5	150,410,835	<i>TNIP1</i>	73.19%	74.84%	0.94 [0.89–0.98]	7.8×10^{-3}	73.34%	75.79%	0.91 [0.87–0.94]	8.5×10^{-7}	73.28%	75.21%	0.92 [0.89–0.95]	4.0×10^{-8}
rs3849943	9	27,543,382	<i>C9orf72</i>	71.79%	76.31%	0.84 [0.80–0.88]	1.4×10^{-12}	72.78%	76.5%	0.83 [0.80–0.87]	4.0×10^{-19}	72.39%	76.38%	0.84 [0.81–0.86]	3.8×10^{-30}
rs74654358	12	64,881,967	<i>TBK1</i>	3.77%	4.01%	1.20 [1.07–1.34]	1.6×10^{-3}	5.12%	4.61%	1.23 [1.13–1.34]	7.7×10^{-7}	4.59%	4.25%	1.22 [1.14–1.30]	4.7×10^{-9}
rs12973192	19	17,753,239	<i>UNC13A</i>	67.62%	69.37%	0.86 [0.82–0.91]	1.3×10^{-8}	64.52%	66.00%	0.9 [0.87–0.93]	2.4×10^{-8}	65.75%	68.05%	0.89 [0.86–0.91]	3.9×10^{-15}
rs75087725	21	45,753,117	<i>C21orf2</i>	0.70%	0.46%	1.99 [1.44–2.75]	2.2×10^{-5}	1.83%	1.27%	1.61 [1.39–1.87]	8.7×10^{-11}	1.38%	0.78%	1.67 [1.46–1.91]	1.8×10^{-14}

Position is based on Human Genome Assembly build 37. Nearest gene or previously published gene names are included. Chr, chromosome; MAF, minor allele frequency; OR, odds ratio; 95% CI, confidence interval; *rs113247976 represents the p.Pro986Leu variant in *KIF5A* (GenBank: NM_004984.2).

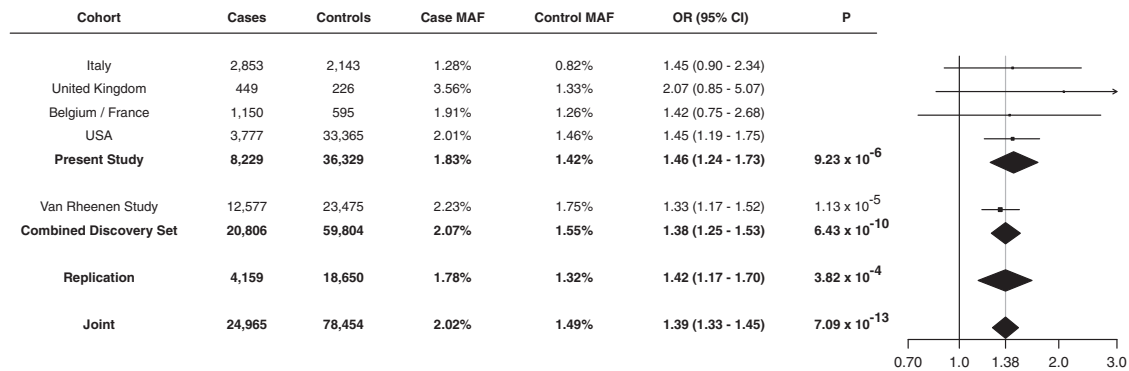


Figure 2. Discovery and Replication of the Association of the *KIF5A* p.Pro986Leu (rs113247976) Variant with ALS

Analysis of the p.Pro986Leu (rs113247976) variant within each of the described cohorts is shown. Allelic association for all subcohorts was analyzed by logistic regression followed by a fixed-effects meta-analysis. The Forest plot (right) displays the distribution of OR estimates across study cohorts with the vertical gray line denoting the OR estimated under the meta-analysis, and with the width of the horizontal lines and the diamonds corresponding to 95% confidence intervals.

(STAR Methods; Figure S8). This included non-overlapping samples from our RVB (673 FALS and 17,696 controls). Analysis of the cohort revealed an allele frequency of 1.78% in cases and 1.32% in controls (rs113247976, $p = 3.82 \times 10^{-4}$, OR = 1.42, 95% CI = 1.17–1.70), thereby replicating the association of the original GWAS. A meta-analysis of the GWAS and replication cohort ($n = 24,965$ cases and 78,454 controls) yielded a highly significant p of 7.09×10^{-13} (OR = 1.39, 95% CI = 1.33–1.45; Figure 2). These results support the association of *KIF5A* p.Pro986Leu with ALS. However, at this point we cannot definitively state that the missense variant is the primary risk factor, as we cannot rule out other variants in linkage disequilibrium.

We next performed mutational screening of *KIF5A* in an additional cohort of 9,046 ALS cases that had not been included in our original RVB. This revealed three additional carriers of C-terminal variants. One sporadic patient harbored an exon 26 frame-shift mutation (p.Asn997fs) and a second sporadic patient harbored an exon 27 splice-altering mutation (c.2993-1G>A; Table 3). The third patient carried a p.Arg1007Lys (c.3020G>A) mutation and had a familial history of ALS. This mutation was also observed in FALS patients from our RVB; however, a comparison of 240,715 common variant sites between the two patients failed to reveal a familial relationship (Experimental Model and Subject Details). Additionally, one patient was observed to

carry a predicted splice-altering variant proximal to exon 3 (c.291+5G>A). However, this variant was not supported as creating an aberrant transcript by ASSEDA. The cohort used for this analysis was comprised mainly of sporadic ALS cases. LOF variants were not observed in a follow-up panel of 1,955 controls. Comparison of the LOF variants in sporadic patients (2/9,046 cases, 0.022%) with either the 1,955 replication controls or all controls analyzed in this study (21,449 controls) yielded insignificant p values (0.868 and 0.423, respectively). Interestingly, the frequency of LOF variants in sporadic cases is lower than that observed in our original FALS cohort (0.703%), suggesting that *KIF5A* LOF variants display a high penetrance. Furthermore, the rate of LOF variants reported in the Exome Aggregation Consortium (ExAC) database is lower than we observed in the control samples used in our discovery cohort (0.007% versus 0.015%).

ALS-Associated Mutations in *KIF5A* Are Distinct from SPG10/CMT2 Mutations

Missense mutations within *KIF5A* are a known cause of hereditary spastic paraparesis (spastic paraplegia type 10, autosomal dominant; OMIM: 604187) and of Charcot-Marie-Tooth disease type 2 (CMT2) (Crimella et al., 2012; Jennings et al., 2017; Liu et al., 2014; Reid et al., 2002). Although SPG10 and CMT2 share

Table 2. Top ALS Associations Identified through RVB of FALS and Control Exome Sequencing Results

Gene	FALS	Control	OR	p
<i>KIF5A</i>	6 (0.53%)	3 (0.02%)	32.07 (9.05–135.27)	5.55×10^{-7}
<i>TBK1</i>	8 (0.70%)	9 (0.05%)	15.11 (5.81–38.69)	5.58×10^{-7}
<i>NEK1</i>	12 (1.05%)	32 (0.16%)	6.64 (3.32–12.51)	1.68×10^{-6}
<i>CALHM2</i>	7 (0.62%)	9 (0.05%)	12.13 (4.47–31.79)	9.19×10^{-6}
<i>COL14A1</i>	8 (0.70%)	16 (0.08%)	8.04 (3.32–18.08)	2.72×10^{-5}
<i>AK1</i>	10 (0.88%)	34 (0.17%)	5.37 (2.55–10.41)	5.62×10^{-5}
<i>ATRN</i>	5 (0.44%)	9 (0.05%)	11.06 (3.57–31.02)	1.66×10^{-4}
<i>VLDLR</i>	5 (0.44%)	9 (0.05%)	10.87 (3.51–30.43)	1.79×10^{-4}
<i>FUS</i>	4 (0.35%)	4 (0.02%)	16.53 (4.25–64.33)	2.08×10^{-4}
<i>ZMYND12</i>	6 (0.53%)	12 (0.06%)	7.92 (2.86–19.96)	2.61×10^{-4}

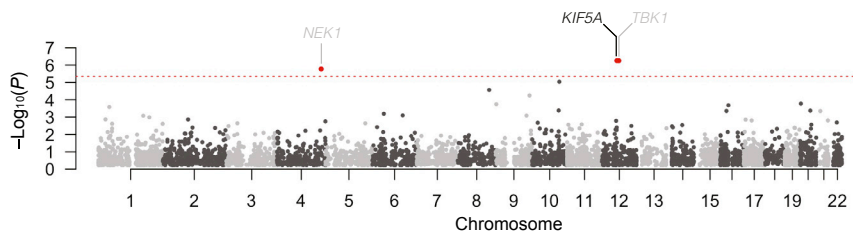


Figure 3. Identification of Association between *KIF5A* and ALS Risk through Rare Variant Burden Analysis of Exome Sequencing

Manhattan plot showing gene-level p values from an exome-wide rare variant burden analysis. Analyses of 1,138 index FALS cases versus 19,494 controls were restricted to rare LOF variants (splice altering/nonsense, MAF < 0.001). A minimum of three LOF variant carriers were required for analysis. The dashed red line denotes the threshold for exome-wide significance after correction for 11,472 genes (4.36×10^{-6}). Previously reported (gray) and novel (black) genes exhibiting a significant excess of rare LOF variants in patients are shown.

clinical features with ALS, a careful examination of the clinical records of the ALS cases with LOF mutations in *KIF5A* ruled out misdiagnosis. Furthermore, we detected no variants previously associated with SPG10 or CMT2 in our FALS cohort (Liu et al., 2014).

To further elucidate genotype-phenotype relationships, we evaluated the location of mutations within *KIF5A*. Interestingly, mutations contributing to SPG10 and to CMT2 are almost exclusively missense changes and are located in the N-terminal motor domain (amino acids 9–327) of *KIF5A* (Figure 5). In contrast, the mutations identified as contributing to ALS are found predominantly in the C-terminal cargo-binding region of *KIF5A* (amino acids 907–1032) with the highly penetrant FALS mutations showing LOF. These results indicate that the functional domain mutated in *KIF5A* dictates the clinical phenotype, resulting in distinct yet overlapping neurodegenerative diseases.

Patients with *KIF5A* LOF Mutations Display Younger Age at Onset and Longer Survival

To establish the existence of any commonalities between patients with LOF mutations in the C-terminal region of *KIF5A*, we evaluated their clinical phenotype. Cases with LOF mutations exhibited a median age of onset at 46.5 years (n = 19; Table S7). This is lower than the age of onset reported for ALS in epidemiological studies (65.2 years, interquartile range 56.0–72.2) (Ahmeti et al., 2013). Interestingly, we also observed an increased disease duration (survival) in patients harboring these LOF mutations. The median survival time of ALS patients is 20–36 months (Ahmeti et al., 2013). In contrast, cases with LOF mutations exhibited a median survival of nearly 10 years (117 months, n = 17; Table S7). ALS patients with symptom onset before 40 years of age have been shown to have longer survival, often exceeding 10 years (Chiò et al., 2009). In contrast,

Table 3. LOF Variants within *KIF5A* Identified in Proband

Position	Variant	Exon	cDNA	Description	Predicted Exon Skipping	Gender	Age of Onset (Years)	Site of Onset	Survival (Months)	Alive (Yes/No)
Control Variants										
57,963,470	A>G	11	c.1117+4A>G	3' splice junction	P	M	n/a	n/a	n/a	n/a
57,966,423	C>T	15	c.1630C>T	p.Arg544*	–	F	n/a	n/a	n/a	n/a
57,976,884	G>C	28	c.3021G>C	5' splice junction	N	F	n/a	n/a	n/a	n/a
FALS Variants										
57,975,729	GA>A	26	c.2987delA	p.Asp996fs	–	M	45	n/a	n/a	n/a
57,976,382	C>T	27	c.2993-3C>T	5' splice junction	Y	M	29	L	>264	Y
57,976,385	GA>G	27	c.2996delA	p.Asn999fs	–	M	42	L	>12	Y
57,976,411	A>G	27	c.3019A>G	p.Arg1007Gly	Y	F	53	L	45	N
57,976,412	G>A	27	c.3020G>A	p.Arg1007Lys	Y	M	50	L	>108	Y
57,976,412	G>A	27	c.3020G>A	p.Arg1007Lys	Y	F	50	n/a	>240	Y
57,976,413	G>A	27	c.3020+1G>A	3' splice junction	Y	M	45	B	>220	Y
57,976,414	T>A	27	c.3020+2T>A	3' splice junction	Y	M	46	B	124	N
57,976,415	A>G	27	c.3020+3A>G	3' splice junction	Y	M	50	B	54	N
SALS Variants										
57,957,481	G>A	3	c.291+5G>A	3' splice junction	N	n/a	n/a	n/a	n/a	n/a
57,975,731	CA>C	26	c.2989delA	p.Asn997fs	–	F	50	L	>96	Y
57,976,384	G>A	27	c.2993-1G>A	5' splice junction	Y	n/a	52	B	n/a	n/a

P, possible; Y, yes; N, no; M, male; F, female; L, limb onset; B, bulbar onset, n/a, not available or applicable. Note that ASSEDA does not predict exon skipping based on frameshifts or nonsense mutations (Tompson et al., 2007).

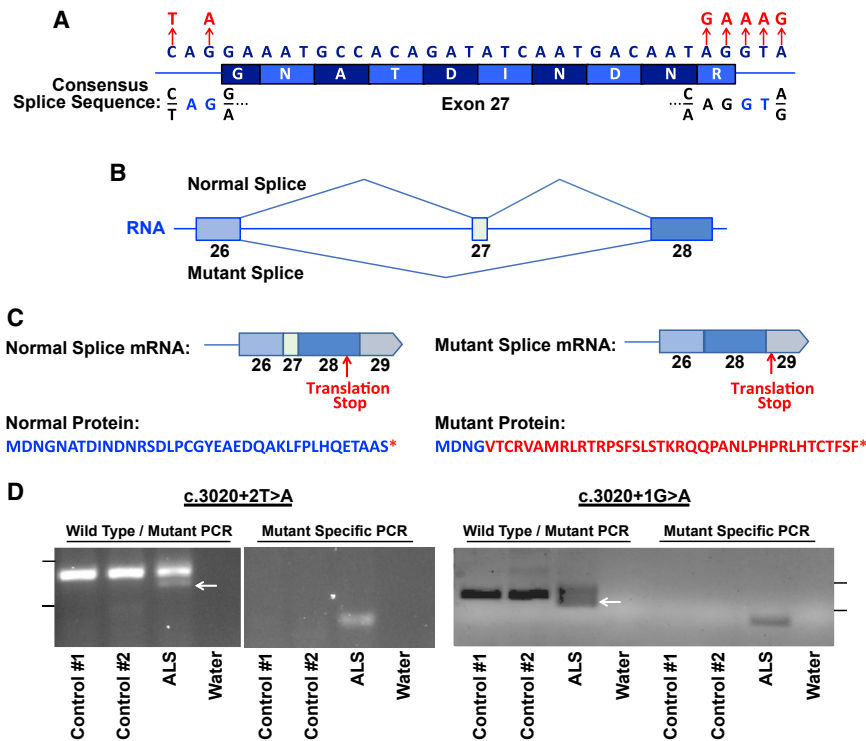


Figure 4. ALS-Associated LOF Variants of *KIF5A* Disrupt C-Terminal Sequence by Inducing Skipping of Exon 27

(A) Single nucleotide variants (SNVs) within *KIF5A* identified in ALS patients are clustered at the 5' and 3' splice junctions of exon 27. The consensus splice sequence is shown.

(B) ALS-associated SNVs are predicted to induce skipping of exon 27 and result in an aberrant mRNA transcript.

(C) The skipping of exon 27 of *KIF5A* yields an out-of-frame and extended disrupted C-terminal peptide sequence. The amino acids in red signify the divergence from the normal protein.

(D) RT-PCR was performed using RNA derived from ALS patients with the indicated LOF variant or without (controls) using primers to amplify either both wild-type (155 bp) and mutant (127 bp) splice forms or specifically the mutant splice form (80 bp, right panel). The arrow represents the position of the mutant-specific product. The tick marks represent 200 bp (upper) and 100 bp (lower) markers.

patients with uncomplicated types of hereditary spastic paraparesis and CMT2 display a normal life expectancy (Patzkó and Shy, 2011).

DISCUSSION

We previously identified *KIF5A* as a candidate gene for ALS in our prior study that lacked the power to draw a definitive conclusion (Kenna et al., 2016). *KIF5A* was also a candidate ALS gene in a previous GWAS, though it similarly failed to reach genome-wide significance (McLaughlin et al., 2017; van Rheenen et al., 2016), as well as a single gene study selected based on the *a priori* knowledge of its role in HSP/CMT2 and cytoskeletal function (Brenner et al., 2018). Here, we have confirmed *KIF5A* as an ALS-associated gene with genome-wide significance through two independent approaches. By performing a GWAS involving ~80,000 samples, in addition to replicating five previously published loci, as well as the previously reported locus *SCFD1* using a linear mixed model analysis (data not shown), we identified a missense variant within the *KIF5A* gene that reached genome-wide significance for association with ALS risk. It should be stated though, that as with all GWASs, we cannot rule out that other variants in linkage disequilibrium represent the primary risk factor. In an independent line of investigation, we applied RVB to exome sequencing of ~21,000 samples and identified an exome-wide significant association between ALS risk and rare *KIF5A* LOF variants. Analyses of *KIF5A* in independent replication cohorts both confirmed our initial finding for the p.Pro986Leu variant and revealed three additional carriers of LOF variants in 9,046 ALS cases. Taken together, our results indicate that the p.Pro986Leu *KIF5A* variant may represent

a relatively common, but low penetrance, risk allele for ALS, while LOF variants constitute rare, but high penetrance, risk factors.

Kinesins are microtubule-based motor proteins involved in intracellular transport of organelles within eukaryotic cells. In mammals, there are three heavy-chain isoforms of KIF5: KIF5A, KIF5B, and KIF5C (Miki et al., 2001). The three proteins homo- and heterodimerize through their coiled-coiled stalk domain, and create a complex with two kinesin light chains via binding to the tail domain (Hirokawa et al., 1989). All three KIF5 genes are expressed in neurons (Kanai et al., 2000) and function to transport many cargos by binding to distinct adaptor proteins.

The central role of kinesins in axonal transport leads us to speculate that mutations in *KIF5A* cause disease by disrupting this process. Indeed, defects in axonal transport are a common observation in ALS patients and are already known to directly contribute to motor neuron degeneration pathogenesis (Chevalier-Larsen and Holzbaur, 2006; Hirokawa et al., 2010; Millecamps and Julien, 2013). KIF5 mediates the transport of granules containing both RNA and RNA-binding proteins within neuronal dendrites and axons (Kanai et al., 2004). Among these cargos are the ALS-associated proteins FUS and hnRNPA1 (Guo et al., 2017; Kim et al., 2013; Kwiatkowski et al., 2009; Vance et al., 2009). Similarly, KIF5 mediates the transport of VAPB through the adaptor protein protrudin (Matsuzaki et al., 2011), and mutations in the *VAPB* gene have been identified in ALS and late-onset spinal muscular atrophy (Nishimura et al., 2004, 2005). KIF5 is responsible for the axonal transport of neurofilaments (Wang and Brown, 2010) and *KIF5A* knockout mice display abnormal transport of neurofilaments (Xia et al., 2003). Abnormal accumulation of neurofilaments is a pathological hallmark of ALS and rare mutations in neurofilament heavy polypeptide (NEFH) are associated with ALS (Al-Chalabi et al., 1999).

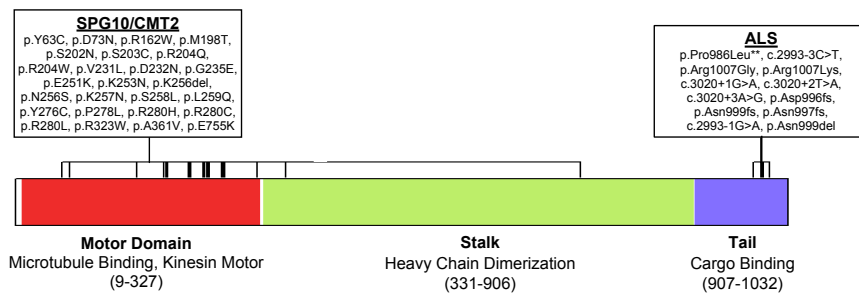


Figure 5. KIF5A ALS Mutations Show Distinct Localization from Missense Mutations Previously Associated with SPG10 and CMT2

Causative mutations for SPG10 and CMT2 described within the literature (Crimella et al., 2012; Jennings et al., 2017; Liu et al., 2014; Reid et al., 2002) and ALS-associated mutations identified within this study are shown. As illustrated, mutations causative for SPG10/CMT2 are predominantly missense changes located in the N-terminal motor domain. In contrast, ALS mutations are primarily located at the C-terminal motor domain and are LOF. The double asterisk denotes the risk variant identified through the GWAS.

KIF5 also contributes to the transport of mitochondria (Kanai et al., 2000; Tanaka et al., 1998) and motor neurons derived from *KIF5A*^{-/-} mice display transport deficits and reduced survival (Karle et al., 2012). Impaired transport and dysfunction of mitochondria represent another common hallmark observed in ALS patients (Chevalier-Larsen and Holzbaur, 2006; Guo et al., 2017; Palomo and Manfredi, 2015; Smith et al., 2017). KIF5 also contributes to the transport of AMPA-type (Heisler et al., 2014; Setou et al., 2002) and GABA_A receptors (Nakajima et al., 2012). In keeping with reported ALS genes such as *NEK1* (Thiel et al., 2011) and *PFN1* (Wu et al., 2012), modulation of *KIF5A* expression has been shown to influence the formation of neurite-like membrane protrusions (Matsuzaki et al., 2011). Given its critical interactions with the cytoskeleton, the identification of *KIF5A* mutations further extends the list of cytoskeletal-related proteins implicated in ALS pathogenesis, such as PFN1, TUBA4A, NEFH, and peripherin (Al-Chalabi et al., 1999; Gros-Louis et al., 2004; Smith et al., 2014; Wu et al., 2012).

An important question raised by the current study is why variation within the C-terminal cargo-binding domain is associated with ALS, while missense variations of the N-terminal motor domain are associated with hereditary spastic paraparesis and CMT2. Missense mutations within this latter domain have been shown to affect microtubule binding and/or ATP hydrolysis, resulting in a defective KIF5A-mediated anterograde transport of cargo along dendrites and axons. This, in turn, leads to the axonal retrograde degeneration observed both in hereditary spastic paraparesis and CMT2, two length-dependent axonopathies (Ebbing et al., 2008). In contrast, the primary cellular lesion in ALS is believed to occur within motor neuron cell bodies, where cytoplasmic protein aggregates are consistently observed, and to propagate anterogradely along neurites. We anticipate that LOF variants within the C-terminal domain of *KIF5A* will disrupt binding with specific cargo proteins. This is supported by a study in zebrafish in which truncation of the C terminus resulted in a dramatic disruption of axonal localization of mitochondria (Campbell et al., 2014). One possible mechanism is that disruption of binding to cargo may possibly lead to their accumulation and seed aggregation within the cell body, resulting in a deficiency at neurite terminals. Deficiency in *KIF5A* expression and cargo binding has been associated with accumulation of phosphorylated neurofilaments and amyloid precursor protein within neuronal cell bodies, and subsequent neurodegeneration, in patients with multiple sclerosis (Hares

et al., 2017). While differences in KIF5A kinetics and KIF5A interactions constitute one possibility to explain the phenotypic heterogeneity, it is also possible C-terminal and N-terminal variants act through a common mechanism, but that a difference in the relative extent of loss- or gain-of-function toxicities leads to milder (i.e., hereditary spastic paraplegia or CMT2) or more severe (i.e., ALS) phenotypes.

STAR★METHODS

Detailed methods are provided in the online version of this paper and include the following:

- KEY RESOURCES TABLE
- CONTACT FOR REAGENT AND RESOURCE SHARING
- EXPERIMENTAL MODEL AND SUBJECT DETAILS
 - Study cohorts
- METHOD DETAILS
 - Data generation and pre-processing
 - Functional annotation of variants identified by WXS/WGS
 - RT-PCR Analysis
- QUANTIFICATION AND STATISTICAL ANALYSIS
 - Statistical analyses
- DATA AND SOFTWARE AVAILABILITY
 - Datasets
 - Data Resources and Databases
 - Software

SUPPLEMENTAL INFORMATION

Supplemental Information includes eight figures, eight tables, and consortia memberships and can be found with this article online at <https://doi.org/10.1016/j.neuron.2018.02.027>.

CONSORTIA

The members of the ALS Sequencing Consortium are Andrew S. Allen, Stanley Appel, Robert H. Baloh, Richard S. Bedlack, Braden E. Boone, Robert Brown, John P. Carulli, Alessandra Chesi, Wendy K. Chung, Elizabeth T. Cirulli, Gregory M. Cooper, Julien Couthouis, Aaron G. Day-Williams, Patrick A. Dion, Summer Gibson, Aaron D. Gitler, Jonathan D. Glass, David B. Goldstein, Yujun Han, Matthew B. Harms, Tim Harris, Sebastian D. Hayes, Angela L. Jones, Jonathan Keebler, Brian J. Krueger, Brittany N. Lasseigne, Shawn E. Levy, Yi-Fan Lu, Tom Maniatis, Diane McKenna-Yasek, Timothy M. Miller, Richard M. Myers, Slavé Petrovski, Stefan M. Pulst, Alya R. Raphael, John M. Ravits,

Zhong Ren, Guy A. Rouleau, Peter C. Sapp, Neil A. Shneider, Ericka Simpson, Katherine B. Sims, John F. Staropoli, Lindsay L. Waite, Quanli Wang, Jack R. Wimbish, and Winnie W. Xin.

The members of the Answer ALS Foundation are Julia Kaye, Steven Finkbeiner, Stacia Wyman, Alexander LeNail, Leandro Lima, Ernest Fraenkel, Jeffrey D. Rothstein, Clive N. Svendsen, Leslie M. Thompson, Jenny Van Eyk, Nicholas J. Maragakis, James D. Berry, Jonathan D. Glass, Timothy M. Miller, Stephen J. Kolb, Robert H. Baloh, Merit Cudkovicz, and Emily Baxi.

The members of the Clinical Research in ALS and Related Disorders for Therapeutic Development (CReATe) Consortium are Michael Benatar, J. Paul Taylor, Gang Wu, Evadnie Rampersaud, Joanne Wu, Rosa Rademakers, Stephan Züchner, Rebecca Schule, Jacob McCauley, Sumaira Hussain, Anne Cooley, Marielle Wallace, Christine Clayman, Richard Barohn, Jeffrey Statland, John Ravits, Andrea Swenson, Carlayne Jackson, Jaya Trivedi, Shaïda Khan, Jonathan Katz, Liberty Jenkins, Ted Burns, Kelly Gwathmey, James Caress, Corey McMillan, Lauren Elman, Erik Pioro, Jeannine Heckmann, Yuen So, David Walk, Samuel Maiser, and Jinghui Zhang.

The members of the French ALS Consortium are William Camu, Kevin Moutzat, Serge Lumbroso, Philippe Corcia, Vincent Meininger, Gérard Besson, Emeline Lagrange, Pierre Clavelou, Nathalie Guy, Philippe Couratier, Patrick Vourch, Véronique Danel, Emilien Bernard, and Gwendal Lemasson.

The members of the Genomic Translation for ALS Care (GTAC) Consortium are Matthew B. Harms, David B. Goldstein, Neil A. Shneider, Stephen Goutman, Zachary Simmons, Timothy M. Miller, Siddharthan Chandran, Suvankar Pal, George Manousakis, Stanley H. Appel, Ericka Simpson, Leo Wang, Robert H. Baloh, Summer Gibson, Richard Bedlack, David Lacomis, Dhruv Sareen, Alexander Sherman, Lucie Bruijn, and Michelle Penny.

The members of the ITALSGEN Consortium are Francesco O. Logullo, Isabella Simone, Giancarlo Logroscino, Fabrizio Salvi, Ilaria Bartolomei, Giuseppe Borghero, Maria Rita Murru, Emanuela Costantino, Carla Pani, Roberta Puddu, Carla Caredda, Valeria Piras, Stefania Tranquilli, Stefania Cuccu, Daniela Corongiu, Maurizio Melis, Antonio Milia, Francesco Marrosu, Maria Giovanna Marrosu, Gianluca Floris, Antonino Cannas, Stefania Tranquilli, Margherita Capasso, Claudia Caponnetto, Gianluigi Mancardi, Paola Origone, Paola Mandich, Francesca L. Conforti, Sebastiano Cavallaro, Gabriele Mora, Kalliopi Marinou, Riccardo Sideri, Silvana Penco, Lorena Mosca, Christian Lunetta, Giuseppe Lauria Pinter, Massimo Corbo, Nilo Riva, Paola Carrera, Paolo Volanti, Jessica Mandrioli, Nicola Fini, Antonio Fasano, Lucio Tremolizzo, Alessandro Arosio, Carlo Ferrarese, Francesca Trojsi, Gioacchino Tedeschi, Maria Rosario Monsurro, Giovanni Piccirillo, Cinzia Femiano, Anna Ticca, Enzo Ortu, Vincenzo La Bella, Rossella Spataro, Tiziana Colletti, Mario Sabatelli, Marcella Zollino, Amelia Conte, Marco Luigetti, Serena Lattante, Giuseppe Marangi, Marialuisa Santarelli, Antonio Petrucci, Maura Pugliatti, Angelo Piri, Leslie D. Parish, Patrizia Occhineri, Fabio Giannini, Stefania Battistini, Claudia Ricci, Michele Benigni, Tea B. Cau, Daniela Loi, Andrea Calvo, Cristina Moglia, Maura Brunetti, Marco Barberis, Gabriella Restagno, Federico Casale, Giuseppe Marrali, Giuseppe Fuda, Irene Ossola, Stefania Cammarosano, Antonio Canosa, Antonio Ilardi, Umberto Manera, Maurizio Grassano, Raffaella Tanel, and Fabrizio Pisano.

The members of the NYGC ALS Consortium are Hemali Phatnani, Justin Kwan, Dhruv Sareen, James R. Broach, Zachary Simmons, Ximena Arcila-Londono, Edward B. Lee, Viviana M. Van Deerlin, Neil A. Shneider, Ernest Fraenkel, Lyle W. Ostrow, Frank Baas, Noah Zaitlen, James D. Berry, Andrea Malaspina, Pietro Fardat, Gregory A. Cox, Leslie M. Thompson, Steve Finkbeiner, Efthimios Dardiotis, Timothy M. Miller, Siddharthan Chandran, Suvankar Pal, Eran Hornstein, Daniel J. MacGowan, Terry Heiman-Patterson, Molly G. Hammell, Nikolaos A. Patsopoulos, Joshua Dubnau, and Avindra Nath.

The members of the Project MinE ALS Sequencing Consortium are Ahmad Al Kheifat, Ammar Al-Chalabi, Peter Andersen, A. Nazli Basak, Ian P. Blair, Adriano Chio, Jonathan Cooper-Knock, Philippe Corcia, Philippe Couratier, Mamede de Carvalho, Annelot Dekker, Vivian Drory, Alberto Garcia Redondo, Marc Gotkine, Orla Hardiman, Winston Hide, Alfredo Iacoangeli, Jonathan Glass, Kevin Kenna, Matthew Kiernan, Maarten Kooyman, John Landers, Russell McLaughlin, Bas Middelkoop, Jonathan Mill, Miguel Mitne Neto, Mattieu Moisse, Jesus Mora Pardina, Karen Morrison, Stephen Newhouse, Susana Pinto, Sara Pulit, Wim Robberecht, Aleksey Shatunov, Pamela Shaw, Chris Shaw, Vincenzo Silani, William Sproviero, Gijs Tazelaar, Nicola Ticozzi, Philip

van Damme, Leonard van den Berg, Rick van der Spek, Kristel van Eijk, Michael van Es, Wouter van Rheenen, Joke van Vugt, Jan Veldink, Markus Weber, Kelly L. Williams, Mayana Zatz, Denis C. Bauer, and Natalie A. Twine.

The members of the SLAGEN Consortium are Vincenzo Silani, Nicola Ticozzi, Cinzia Gellera, Antonia Ratti, Franco Taroni, Giuseppe Lauria, Federico Verde, Isabella Fogh, Cinzia Tiloca, Giacomo P. Comi, Gianni Soraru, Cristina Cereda, Sandra D'Alfonso, Lucia Corrado, Fabiola De Marchi, Stefania Corti, Mauro Ceroni, Letizia Mazzini, Gabriele Siciliano, Massimiliano Filosto, Maurizio Inghilleri, Silvia Peverelli, Claudia Colombrita, Barbara Poletti, Luca Maderna, Roberto Del Bo, Stella Gagliardi, Giorgia Querin, Cinzia Bertolin, Viviana Pensato, and Barbara Castellotti.

ACKNOWLEDGMENTS

The ALS Association (ALSA) provided funding support to Project MinE (15-LGCA-235), the NYGC ALS Consortium (15-LGCA-234), the CReATe Consortium (17-LGCA-331), the GTAC Consortium (16-LGCA-310), the Target ALS Human Postmortem Tissue Core (16-LGCA-308), and NeuroLINCS, an NIH-funded collaborative effort. P.V.D. is a senior investigator of FWO-Vlaanderen. Project MinE Belgium has been supported by ALS liga België, Flanders Innovation & Entrepreneurship (IWT grant Project MinE), the Belgian National Lottery, and a grant from Opening the Future Fund (KU Leuven). W.R. is supported through the E. von Behring Chair for Neuromuscular and Neurodegenerative Disorders and ERC (grant agreement no. 340429). Additional funding support includes NINDS R35 NS097261 (R.R.) and P01NS084974 (R.R. and K.B.B.). A.N.B. thanks the Suna and Inan Kirac Foundation, Istanbul, TR for its generous support of the Neurodegeneration Research Laboratory throughout this study. Funding for this work was provided by the Heaton-Ellis Trust, the Middlemass Family, Motor Neurone Disease Association, Medical Research Council, Medical Research Foundation, the Psychiatry Research Trust of the Institute of Psychiatry, Guy's and St Thomas' Charity, the Wellcome Trust, and the Noreen Murray Foundation (C.E.S.). This work was also supported by the UK Dementia Research Institute, which is funded by the Medical Research Council, Alzheimer's Society, and Alzheimer's Research UK (C.E.S.). The salary for B.N.S. was funded by the Medical Research Foundation (MRF) (MRF-060-0003-RG-SMITH). P.C.S. was supported through the auspices of Dr. H. Robert Horvitz (Massachusetts Institute of Technology), an Investigator of the Howard Hughes Institute. Support for this work came from the Department of Veterans Affairs and NIH (P30AG13846) to N.W.K. I.P.B. is supported by the Motor Neurone Disease Research Institute of Australia and the National Health and Medical Research Council of Australia (1107644 and 1095215). P.F. is supported by an MRC/MNDA LEWF and by NIHR UCLH BRC. Research support from NIH/NIEHS (K23ES027221), the ALS Association, Target ALS, and Cytokinetics was provided to S.A.G. M. Cudkovicz was awarded funding from ALS Finding a Cure. N.T., C. Tiloca, C.G., V.S., and J.E.L. received research support from AriSLA – Fondazione Italiana di Ricerca per la SLA (grants EXOMEFALS and NOVALS) and the Italian Ministry of Health (grant GR-2011-02347820 - IRiSALS). R.L. McLaughlin was supported by Science Foundation Ireland and the MND Association of England, Wales and Northern Ireland. O.H. is funded by the Health Research Board Clinician Scientist Programme and Science Foundation Ireland. P.J.S. is supported as an NIHR Senior Investigator (NF-SI-0512-10082). P.J.S. and J. Kirby are supported by the Sheffield NIHR Biomedical Research Centre for Translational Neuroscience (IS-BRC-1215-20017). A. Chiò receives research support from the Italian Ministry of Health (Ricerca Finalizzata), Regione Piemonte (Ricerca Finalizzata), University of Turin, Fondazione Vialli e Mauro onlus, and the European Commission (Health Seventh Framework Programme). P.M.A. is supported by research grants from the Swedish Brain Foundation, the Swedish Science Council, the Knut and Alice Wallenberg Foundation, the Bertil Hällsten Foundation, the Ulla-Carin Lindquist Foundation, the Neuroförbundet Association, the Torsten and Ragnar Söderberg Foundation, the Stratneuro Initiative, and Västerbotten County Council. R.B. received funding support from NINDS/NS061867 and Target ALS. R.H.B.J. received funding from the Angel Fund, Project ALS/P2ALS, and the ALS Therapy Alliance. E. Rogaeva received funding support from the Canadian Consortium on Neurodegeneration in Aging. L. Myllykangas received funding support from Helsinki University Hospital and the Academy of Finland (grant 294817). P.T. received funding support from

Helsinki University Hospital and the Sigrid Jusélius Foundation. J.D.G. received funding support from the ALS Association and Muscular Dystrophy Association. Additional funding was provided by the NIH/NINDS (R01NS073873, J.E.L.), the ALS Association (N.T., V.S., C.E.S., R.H.B.J., and J.E.L.), and the MND Association (N.T., V.S., C.E.S., and J.E.L.). J. Kaye, S.F., S.K.W., A.L., E.F., C.N.S., L.M.T., J.E.V.E., and J.D.R. received funding through NeuroLINC (NIH U54 NS091046). The sequencing activities at NYGC were additionally supported by the TOW Foundation. The CReATe consortium (U54NS092091) is part of the Rare Diseases Clinical Research Network (RDCRN), an initiative of the Office of Rare Diseases Research (ORDR), NCATS. This consortium is funded through collaboration between NCATS and the NINDS. The Target ALS Human Postmortem Tissue Core received funding support from Target ALS (grant 90072272). The InCHIANTI study baseline (1998–2000) was supported as a “targeted project” (ICS110.1/RF97.71) by the Italian Ministry of Health and in part by the United States National Institute on Aging (contracts 263 MD 9164 and 263 MD 821336), the InCHIANTI follow-up 1 (2001–2003) was funded by the United States National Institute on Aging (contracts N.1-AG-1-1 and N.1-AG-1-2111), and the InCHIANTI follow-ups 2 and 3 studies (2004–2010) were financed by the United States National Institute on Aging (contract N01-AG-5-0002). This work was supported in part by the Intramural Research Programs of the NIH, National Institute on Aging (Z01-AG000949-02); by the National Institute of Neurological Disorders and Stroke; and by Merck & Co., Inc.. The work was also supported by the Center for Disease Control and Prevention, the Muscular Dystrophy Association, Microsoft Research, the Packard Center for ALS Research at Johns Hopkins, the ALS Association, UK MND Association, Medical Research Council (MRC) UK, Wellcome Trust/MRC Joint Call in Neurodegeneration Award, MRC Neuromuscular Centre, UK National Institute for Health Research Biomedical Research Unit, Italian Health Ministry (Ricerca Sanitaria Finalizzata 2007), Fondazione Vialli e Mauro Onlus, Compagnia di San Paolo, and European Community’s Health Seventh Framework Programme (FP7/2007-2013) under grant agreement 259867. Role of the sponsors: the sponsors did not participate in the design and conduct of the study; collection, management, analysis, or interpretation of the data; preparation, review, or approval of the manuscript; or decision to submit the manuscript for publication. We thank the patients and research subjects who contributed samples for this study. This study used DNA samples and clinical data from the Target ALS Human Postmortem Tissue Core, the NINDS Repository at Coriell, the North East ALS (NEALS) Consortium Biorepository, the New York Brain Bank-The Taub Institute, Columbia University, Department of Veterans Affairs Biorepository Brain Bank (grant #BX002466; C.B.B.), the Baltimore Longitudinal Study of Aging (BLSA) and the Johns Hopkins University Alzheimer’s Disease Research Center, the NICHD Brain and Tissue Bank for Developmental Disorders at the University of Maryland, and the Australian MND DNA Bank. We also thank Crystal Pacut, Blake Swihart, and Jayna Duell, RN for assistance in study coordination (S.A.G.). This study utilized the high-performance computational capabilities of the Biowulf Linux cluster at the NIH, Bethesda, Maryland (<http://hpc.nih.gov>), and the Massachusetts Green High Performance Computing Center at the University of Massachusetts Medical School (<https://www.mghpcc.org>). This study also used genotype and clinical data from the Wellcome Trust Case Control Consortium.

AUTHOR CONTRIBUTIONS

Sample Collection, Preparation, and Clinical Evaluation: N.T., B.J.K., P.K., W.v.R., J.J.F.A.v.V., R.A.V.d.S., B.N.S., G. Marangi, S.D.T., A.S.G., A. Kenna, ITALSGEN Consortium, ALS Sequencing Consortium, Answer ALS Foundation, G. Mora, A. Calvo, L. Mazzini, N.R., J.M., C. Caponnetto, S.B., P.V., V.L.B., F.L.C., G.B., S.M., I.L.S., F. Trojsi, F.S., F.O.L., S.D., L.C., M. Capasso, L.F., Genomic Translation for ALS Care (GTAC) Consortium, C.d.A.M.M., S.K., D.B.G., A.D.G., T.H., R.M.M., NYGC ALS Consortium, H.P., R.L. Musunuri, U.S.E., A.A., M.C.Z., J. Kaye, S.F., S.K.W., A.L., L.L., E.F., C.N.S., L.M.T., J.E.V.E., J.D.B., T.M.M., S.J.K., M. Cudkowicz, E.B., Clinical Research in ALS and Related Disorders for Therapeutic Development (CReATe) Consortium, M.B., J.W., SLAGEN Consortium, G.L., F.V., I.F., C. Tiloca, G.P.C., G.S., French ALS Consortium, P.C., H.L., L. Myllykangas, L.J., M.V., J.E., H.H., S.R., S.P.-B., R.W.O., K.C.S., A.M., J.H., P.C.S., D.M.-Y., M.P., A.

King, C. Troakes, C.V., J.d.B., F.B., A.L.M.A.t.A., J.L.M.-B., S.W.S., M.K.F., F.L., R.B., S.M.P., J.M.R., D.J.L.M., J. Kirby, E.P.P., R.P., J.B., G.G., T.L.D., C.B.B., N.W.K., J.C.T., I.L.B., K.M., S.L., T.D.H.-P., F.K., L.V.D.B., R.H.B., T.M.S., T.M., A.S., K.R.V.E., M.d.C., M.K., B.M., M.M., R.L. McLaughlin, M.A.V.E., M.W., K.B.B., M.V.B., R.R., K.E.M., A.N.B., J.S.M., V.E.D., P.J.S., M.R.T., K.T., O.H., K.L.W., J.A.F., G.A.N., I.P.B., G.A.R., J.E.-P., A.G.-R., A.A.-C., Project MinE ALS Sequencing Consortium, E. Rogaeva, L.Z., L.W.O., N.J.M., J.D.R., Z.S., J.C.-K., A.B., S.A.G., E.L.F., S.B.G., F. Taroni, A.R., C.G., P.V.D., W.R., P.F., M.S., C.L., A.C.L., P.M.A., J.H.W., W.C., J.Q.T., V.M.V.D., R.H.B.J., L.H.v.d.B., J.H.V., M.B.H., J.D.G., D.J.S., P.T., V.S., A. Chiò, C.E.S., B.J.T., and J.E.L. Performed Experiments and Data Analysis: A.N., K.P.K., A.E.R., N.T., F.F., R.C., J.A.D., B.J.K., M.A.N., P.K., A.M.R., W.v.R., N.A.M., J.J.F.A.v.V., J.T.G., R.A.V.d.S., H.A.P., Shankaracharya, B.N.S., G. Marangi, S. Asres, S.A.-S., S.D.T., Y.A., A.S.G., J.D.E., A. Kenna, Genomic Translation for ALS Care (GTAC) Consortium, ALS Sequencing Consortium, Answer ALS Foundation, C.d.A.M.M., S.K., D.B.G., A.D.G., T.H., R.M.M., NYGC ALS Consortium, H.P., R.L. Musunuri, U.S.E., A.A., M.C.Z., J. Kaye, S.F., S.K.W., A.L., L.L., E.F., C.N.S., L.M.T., J.E.V.E., J.D.B., T.M.M., S.J.K., M. Cudkowicz, E.B., Clinical Research in ALS and Related Disorders for Therapeutic Development (CReATe) Consortium, E. Rampsaud, G.W., SLAGEN Consortium, G.L., F.V., I.F., C. Tiloca, G.P.C., G.S., A.B.S., J.O.J., S. Arepalli, P.C.S., D.M.-Y., M.P., C. Troakes, C.V., J.d.B., F.B., A.L.M.A.t.A., J.L.M.-B., D.G.H., J.D., J.R.G., S.W.S., R.H.C., T.D.H.-P., L.V.D.B., R.H.B., T.M.S., T.M., A.S., K.R.V.E., M.d.C., M.K., B.M., M.M., R.L. McLaughlin, M.A.V.E., M.W., K.B.B., M.V.B., R.R., K.E.M., A.N.B., J.S.M., V.E.D., P.J.S., M.R.T., K.T., O.H., K.L.W., J.A.F., G.A.N., I.P.B., G.A.R., J.E., A.G.-R., A.A.-C., Project MinE ALS Sequencing Consortium, E. Rogaeva, L.W.O., N.J.M., J.D.R., Z.S., J.C.-K., S.A.G., E.L.F., F. Taroni, A.R., C.G., P.V.D., W.R., A.C.L., P.M.A., J.H.W., W.C., J.Q.T., V.M.V.D., R.H.B.J., L.H.v.d.B., J.H.V., M.B.H., J.D.G., D.J.S., P.T., V.S., A. Chiò, C.E.S., B.J.T., and J.E.L. Scientific Planning and Direction: A.N., K.P.K., A.E.R., N.T., F.F., R.C., J.A.D., B.J.K., M.A.N., P.K., A.M.R., W.v.R., N.A.M., J.J.F.A.v.V., J.T.G., ALS Sequencing Consortium, Answer ALS Foundation, R.A.V.d.S., C. Cereda, H.A.P., Shankaracharya, B.N.S., G. Marangi, S.D.T., Y.A., J.D.E., ITALSGEN Consortium, G. Mora, A. Calvo, L. Mazzini, N.R., J.M., C. Caponnetto, S.B., P.V., V.L.B., F.L.C., G.B., S.M., I.L.S., F. Trojsi, F.S., F.O.L., S.D., L.C., M. Capasso, L.F., Genomic Translation for ALS Care (GTAC) Consortium, D.B.G., A.D.G., T.H., R.M.M., NYGC ALS Consortium, H.P., J. Kaye, S.F., S.K.W., A.L., L.L., E.F., C.N.S., L.M.T., J.E.V.E., J.D.B., T.M.M., S.J.K., M. Cudkowicz, E.B., Clinical Research in ALS and Related Disorders for Therapeutic Development (CReATe) Consortium, M.B., J.P.T., J.W., French ALS Consortium, P.C., H.L., L. Myllykangas, L.J., M.V., J.E., H.H., S.R., S.P.-B., R.W.O., K.C.S., A.M., J.H., A.B.S., C. Troakes, C.V., J.d.B., F.B., A.L.M.A.t.A., J.L.M.-B., D.G.H., J.R.G., S.W.S., M.K.F., F.L., R.B., S.M.P., J.M.R., D.J.L.M., J. Kirby, E.P.P., R.P., J.B., G.G., T.L.D., C.B.B., N.W.K., J.C.T., I.L.B., K.M., S.L., T.D.H.-P., F.K., L.V.D.B., R.H.B., T.M.S., T.M., A.S., K.R.V.E., M.d.C., M.K., B.M., M.M., R.L. McLaughlin, M.A.V.E., M.W., K.B.B., M.V.B., R.R., K.E.M., A.N.B., J.S.M., V.E.D., P.J.S., M.R.T., K.T., O.H., K.L.W., J.A.F., G.A.N., I.P.B., G.A.R., J.E., A.G.-R., A.A.-C., Project MinE ALS Sequencing Consortium, E. Rogaeva, L.Z., L.W.O., N.J.M., J.D.R., Z.S., J.C.-K., A.B., S.A.G., E.L.F., S.B.G., F. Taroni, A.R., C.G., P.V.D., W.R., P.F., M.S., C.L., A.C.L., P.M.A., J.H.W., W.C., J.Q.T., V.M.V.D., R.H.B.J., L.H.v.d.B., J.H.V., M.B.H., J.D.G., D.J.S., P.T., V.S., A. Chiò, C.E.S., B.J.T., and J.E.L. Initial Manuscript Preparation: A.N., K.P.K., A.E.R., N.T., F.F., R.C., J.A.D., M.A.N., A.B.S., S.W.S., J.H.V., D.J.S., P.T., V.S., A. Chiò, C.E.S., B.J.T., and J.E.L.

DECLARATION OF INTERESTS

J.D.B. is a consultant to Neuraltus Pharmaceuticals and Denali Therapeutics, and held a research fellow position funded by Voyager Therapeutics. M. Cudkowicz has been a consultant for Eli Lilly and Company, Mitsubishi Tanabe Pharma America (MT Pharma America), Denali Therapeutics, Karyopharm Therapeutics, and Cytokinetics. S.A.G. has served as a consultant for and received research support from Cytokinetics. O.H. has received speaking honoraria from Novartis, Biogen Idec, Sanofi Aventis, and Merck-Serono and has been a member of advisory panels for Biogen Idec, Allergan, Ono Pharmaceuticals, Novartis, Cytokinetics, and Sanofi Aventis. O.H. serves as

Editor-in-Chief of *Amyotrophic Lateral Sclerosis and Frontotemporal Dementia*. L.H.v.d.B. serves on scientific advisory boards for the Prinses Beatrix Spierfonds, Thierry Latran Foundation, Biogen, and Cytokinetics and serves on the editorial board of *Amyotrophic Lateral Sclerosis and Frontotemporal Degeneration* and the *Journal of Neurology, Neurosurgery, and Psychiatry*. J.H.V. reports that his institute received consultancy fees from Vertex Pharmaceuticals. A. Chiò serves on scientific advisory boards for Biogen Idec, Cytokinetics, Italfarmaco, and Neuraltus. P.M.A. serves on advisory board panels for Biogen and Orphazyme. V.S. serves as a consultant for Cytokinetics.

Received: December 21, 2017

Revised: January 21, 2018

Accepted: February 26, 2018

Published: March 21, 2018

REFERENCES

- Ahmeti, K.B., Ajroud-Driss, S., Al-Chalabi, A., Andersen, P.M., Armstrong, J., Birve, A., Blauw, H.M., Brown, R.H., Bruijn, L., Chen, W., et al.; ITALSGEN consortium; ALSGEN Consortium (2013). Age of onset of amyotrophic lateral sclerosis is modulated by a locus on 1p34.1. *Neurobiol. Aging* **34**, 357.e7–357.e19.
- Al-Chalabi, A., Andersen, P.M., Nilsson, P., Chioza, B., Andersson, J.L., Russ, C., Shaw, C.E., Powell, J.F., and Leigh, P.N. (1999). Deletions of the heavy neurofilament subunit tail in amyotrophic lateral sclerosis. *Hum. Mol. Genet.* **8**, 157–164.
- Arthur, K.C., Calvo, A., Price, T.R., Geiger, J.T., Chiò, A., and Traynor, B.J. (2016). Projected increase in amyotrophic lateral sclerosis from 2015 to 2040. *Nat. Commun.* **7**, 12408.
- Benjamin, B., He, J., Zhao, Q., Gratten, J., Garton, F., Leo, P.J., Liu, Z., Mangelsdorf, M., Al-Chalabi, A., Anderson, L., et al. (2017). Cross-ethnic meta-analysis identifies association of the GPX3-TNIP1 locus with amyotrophic lateral sclerosis. *Nat. Commun.* **8**, 611.
- Brenner, D., Yilmaz, R., Müller, K., Grehl, T., Petri, S., Meyer, T., Grosskreutz, J., Weydt, P., Ruf, W., Neuwirth, C., et al.; German ALS network MND-NET (2018). Hot-spot KIF5A mutations cause familial ALS. *Brain*. <https://doi.org/10.1093/brain/awx370>.
- Brooks, B.R. (1994). El Escorial World Federation of Neurology criteria for the diagnosis of amyotrophic lateral sclerosis. Subcommittee on Motor Neuron Diseases/Amyotrophic Lateral Sclerosis of the World Federation of Neurology Research Group on Neuromuscular Diseases and the El Escorial “Clinical limits of amyotrophic lateral sclerosis” workshop contributors. *J. Neurol. Sci.* **124** (Suppl.), 96–107.
- Caminsky, N., Mucaki, E.J., and Rogan, P.K. (2014). Interpretation of mRNA splicing mutations in genetic disease: review of the literature and guidelines for information-theoretical analysis. *F1000Res.* **3**, 282.
- Campbell, P.D., Shen, K., Sapio, M.R., Glenn, T.D., Talbot, W.S., and Marlow, F.L. (2014). Unique function of Kinesin Kif5A in localization of mitochondria in axons. *J. Neurosci.* **34**, 14717–14732.
- Chang, C.C., Chow, C.C., Tellier, L.C., Vattikuti, S., Purcell, S.M., and Lee, J.J. (2015). Second-generation PLINK: rising to the challenge of larger and richer datasets. *Gigascience* **4**, 7.
- Chevalier-Larsen, E., and Holzbaur, E.L.F. (2006). Axonal transport and neurodegenerative disease. *Biochim. Biophys. Acta* **1762**, 1094–1108.
- Chia, R., Chiò, A., and Traynor, B.J. (2018). Novel genes associated with amyotrophic lateral sclerosis: diagnostic and clinical implications. *Lancet Neurol.* **17**, 94–102.
- Chiò, A., Logroscino, G., Hardiman, O., Swinger, R., Mitchell, D., Beghi, E., and Traynor, B.G.; Eurals Consortium (2009). Prognostic factors in ALS: a critical review. *Amyotroph. Lateral Scler.* **10**, 310–323.
- Cingolani, P., Platts, A., Wang, L., Coon, M., Nguyen, T., Wang, L., Land, S.J., Lu, X., and Ruden, D.M. (2012). A program for annotating and predicting the effects of single nucleotide polymorphisms, SnpEff: SNPs in the genome of *Drosophila melanogaster* strain w1118; iso-2; iso-3. *Fly (Austin)* **6**, 80–92.
- Cirulli, E.T., Lasseigne, B.N., Petrovski, S., Sapp, P.C., Dion, P.A., Leblond, C.S., Couthouis, J., Lu, Y.-F., Wang, Q., Krueger, B.J., et al.; FALS Sequencing Consortium (2015). Exome sequencing in amyotrophic lateral sclerosis identifies risk genes and pathways. *Science* **347**, 1436–1441.
- Coppedè, F., and Migliore, L. (2015). DNA damage in neurodegenerative diseases. *Mutat. Res.* **776**, 84–97.
- Crimella, C., Baschiroto, C., Arnoldi, A., Tonelli, A., Tenderini, E., Airoidi, G., Martinuzzi, A., Trabacca, A., Losito, L., Scarlato, M., et al. (2012). Mutations in the motor and stalk domains of KIF5A in spastic paraplegia type 10 and in axonal Charcot-Marie-Tooth type 2. *Clin. Genet.* **82**, 157–164.
- Das, S., Forer, L., Schönherr, S., Sidore, C., Locke, A.E., Kwong, A., Vrieze, S.I., Chew, E.Y., Levy, S., McGue, M., et al. (2016). Next-generation genotype imputation service and methods. *Nat. Genet.* **48**, 1284–1287.
- DeJesus-Hernandez, M., Mackenzie, I.R., Boeve, B.F., Boxer, A.L., Baker, M., Rutherford, N.J., Nicholson, A.M., Finch, N.A., Flynn, H., Adamson, J., et al. (2011). Expanded GGGGCC hexanucleotide repeat in noncoding region of C9ORF72 causes chromosome 9p-linked FTD and ALS. *Neuron* **72**, 245–256.
- Delaneau, O., Zagury, J.-F., and Marchini, J. (2013). Improved whole-chromosome phasing for disease and population genetic studies. *Nat. Methods* **10**, 5–6.
- Ebbing, B., Mann, K., Starosta, A., Jaud, J., Schöls, L., Schüle, R., and Woehlke, G. (2008). Effect of spastic paraplegia mutations in KIF5A kinesin on transport activity. *Hum. Mol. Genet.* **17**, 1245–1252.
- Fang, H., Wu, Y., Narzisi, G., O’Rawe, J.A., Barrón, L.T.J., Rosenbaum, J., Ronemus, M., Iossifov, I., Schatz, M.C., and Lyon, G.J. (2014). Reducing INDEL calling errors in whole genome and exome sequencing data. *Genome Med.* **6**, 89.
- Fang, X., Lin, H., Wang, X., Zuo, Q., Qin, J., and Zhang, P. (2015). The NEK1 interactor, C21ORF2, is required for efficient DNA damage repair. *Acta Biochim. Biophys. Sin. (Shanghai)* **47**, 834–841.
- Freischmidt, A., Wieland, T., Richter, B., Ruf, W., Schaeffer, V., Müller, K., Marroquin, N., Nordin, F., Hübers, A., Weydt, P., et al. (2015). Haploinsufficiency of TBK1 causes familial ALS and fronto-temporal dementia. *Nat. Neurosci.* **18**, 631–636.
- Gladman, M., and Zinman, L. (2015). The economic impact of amyotrophic lateral sclerosis: a systematic review. *Expert Rev. Pharmacoecon. Outcomes Res.* **15**, 439–450.
- Gros-Louis, F., Larivière, R., Gowing, G., Laurent, S., Camu, W., Bouchard, J.P., Meininger, V., Rouleau, G.A., and Julien, J.P. (2004). A frameshift deletion in peripherin gene associated with amyotrophic lateral sclerosis. *J. Biol. Chem.* **279**, 45951–45956.
- Guo, W., Naujock, M., Fumagalli, L., Vandoorne, T., Baatsen, P., Boon, R., Ordoñez, L., Patel, A., Welters, M., Vanwelden, T., et al. (2017). HDAC6 inhibition reverses axonal transport defects in motor neurons derived from FUS-ALS patients. *Nat. Commun.* **8**, 861.
- Hares, K., Redondo, J., Kemp, K., Rice, C., Scolding, N., and Wilkins, A. (2017). Axonal motor protein KIF5A and associated cargo deficits in multiple sclerosis lesional and normal-appearing white matter. *Neuropathol. Appl. Neurobiol.* **43**, 227–241.
- Heisler, F.F., Lee, H.K., Gromova, K.V., Pechmann, Y., Schurek, B., Ruschkies, L., Schroeder, M., Schweizer, M., and Kneussel, M. (2014). GRIP1 interlinks N-cadherin and AMPA receptors at vesicles to promote combined cargo transport into dendrites. *Proc. Natl. Acad. Sci. USA* **111**, 5030–5035.
- Hirokawa, N., Pfister, K.K., Yorifuji, H., Wagner, M.C., Brady, S.T., and Bloom, G.S. (1989). Submolecular domains of bovine brain kinesin identified by electron microscopy and monoclonal antibody decoration. *Cell* **56**, 867–878.
- Hirokawa, N., Niwa, S., and Tanaka, Y. (2010). Molecular motors in neurons: transport mechanisms and roles in brain function, development, and disease. *Neuron* **68**, 610–638.
- Hirtz, D., Thurman, D.J., Gwinn-Hardy, K., Mohamed, M., Chaudhuri, A.R., and Zalutsky, R. (2007). How common are the “common” neurologic disorders? *Neurology* **68**, 326–337.

- Jennings, S., Chenevert, M., Liu, L., Mottamal, M., Wojcik, E.J., and Huckaba, T.M. (2017). Characterization of kinesin switch I mutations that cause hereditary spastic paraplegia. *PLoS ONE* 12, e0180353.
- Jian, X., Boerwinkle, E., and Liu, X. (2014). In silico prediction of splice-altering single nucleotide variants in the human genome. *Nucleic Acids Res.* 42, 13534–13544.
- Kanai, Y., Okada, Y., Tanaka, Y., Harada, A., Terada, S., and Hirokawa, N. (2000). KIF5C, a novel neuronal kinesin enriched in motor neurons. *J. Neurosci.* 20, 6374–6384.
- Kanai, Y., Dohmae, N., and Hirokawa, N. (2004). Kinesin transports RNA: isolation and characterization of an RNA-transporting granule. *Neuron* 43, 513–525.
- Karle, K.N., Möckel, D., Reid, E., and Schöls, L. (2012). Axonal transport deficit in a KIF5A(-/-) mouse model. *Neurogenetics* 13, 169–179.
- Kenna, K.P., van Doormaal, P.T.C., Dekker, A.M., Ticozzi, N., Kenna, B.J., Diekstra, F.P., van Rheenen, W., van Eijk, K.R., Jones, A.R., Keagle, P., et al.; SLAGEN Consortium (2016). NEK1 variants confer susceptibility to amyotrophic lateral sclerosis. *Nat. Genet.* 48, 1037–1042.
- Kim, H.J., Kim, N.C., Wang, Y.-D., Scarborough, E.A., Moore, J., Diaz, Z., MacLea, K.S., Freibaum, B., Li, S., Molliex, A., et al. (2013). Mutations in prion-like domains in hnRNPA2B1 and hnRNPA1 cause multisystem proteinopathy and ALS. *Nature* 495, 467–473.
- Kwiatkowski, T.J., Jr., Bosco, D.A., Leclerc, A.L., Tamrazian, E., Vandenberg, C.R., Russ, C., Davis, A., Gilchrist, J., Kasarskis, E.J., Munsat, T., et al. (2009). Mutations in the FUS/TLS gene on chromosome 16 cause familial amyotrophic lateral sclerosis. *Science* 323, 1205–1208.
- Laaksovirta, H., Peuralinna, T., Schymick, J.C., Scholz, S.W., Lai, S.-L., Myllykangas, L., Sulkava, R., Jansson, L., Hernandez, D.G., Gibbs, J.R., et al. (2010). Chromosome 9p21 in amyotrophic lateral sclerosis in Finland: a genome-wide association study. *Lancet Neurol.* 9, 978–985.
- Liu, X., Jian, X., and Boerwinkle, E. (2013). dbNSFP v2.0: a database of human non-synonymous SNVs and their functional predictions and annotations. *Hum. Mutat.* 34, E2393–E2402.
- Liu, Y.-T., Laurá, M., Hersheson, J., Horga, A., Jaunmuktane, Z., Brandner, S., Pittman, A., Hughes, D., Polke, J.M., Sweeney, M.G., et al. (2014). Extended phenotypic spectrum of KIF5A mutations: From spastic paraplegia to axonal neuropathy. *Neurology* 83, 612–619.
- Lopez-Gonzalez, R., Lu, Y., Gendron, T.F., Karydas, A., Tran, H., Yang, D., Petrucelli, L., Miller, B.L., Almeida, S., and Gao, F.-B. (2016). Poly(GR) in C9ORF72-related ALS/FTD compromises mitochondrial function and increases oxidative stress and DNA damage in iPSC-derived motor neurons. *Neuron* 92, 383–391.
- Madabhushi, R., Pan, L., and Tsai, L.-H. (2014). DNA damage and its links to neurodegeneration. *Neuron* 83, 266–282.
- Majounie, E., Renton, A.E., Mok, K., Dopper, E.G.P., Waite, A., Rollinson, S., Chiò, A., Restagno, G., Nicolaou, N., Simón-Sánchez, J., et al.; Chromosome 9-ALS/FTD Consortium; French research network on FTL/FTLD/ALS; ITALSGEN Consortium (2012). Frequency of the C9orf72 hexanucleotide repeat expansion in patients with amyotrophic lateral sclerosis and frontotemporal dementia: a cross-sectional study. *Lancet Neurol.* 11, 323–330.
- Malovannaya, A., Lanz, R.B., Jung, S.Y., Bulynko, Y., Le, N.T., Chan, D.W., Ding, C., Shi, Y., Yucer, N., Krenciute, G., et al. (2011). Analysis of the human endogenous coregulator complexome. *Cell* 145, 787–799.
- Manichaikul, A., Mychaleckyj, J.C., Rich, S.S., Daly, K., Sale, M., and Chen, W.-M. (2010). Robust relationship inference in genome-wide association studies. *Bioinformatics* 26, 2867–2873.
- Marchini, J., and Howie, B. (2010). Genotype imputation for genome-wide association studies. *Nat. Rev. Genet.* 11, 499–511.
- Maruyama, H., Morino, H., Ito, H., Izumi, Y., Kato, H., Watanabe, Y., Kinoshita, Y., Kamada, M., Nodera, H., Suzuki, H., et al. (2010). Mutations of optineurin in amyotrophic lateral sclerosis. *Nature* 465, 223–226.
- Matsuzaki, F., Shirane, M., Matsumoto, M., and Nakayama, K.I. (2011). Protrudin serves as an adaptor molecule that connects KIF5 and its cargoes in vesicular transport during process formation. *Mol. Biol. Cell* 22, 4602–4620.
- McLaughlin, R.L., Schijven, D., van Rheenen, W., van Eijk, K.R., O'Brien, M., Kahn, R.S., Ophoff, R.A., Goris, A., Bradley, D.G., Al-Chalabi, A., et al.; Project MinE GWAS Consortium; Schizophrenia Working Group of the Psychiatric Genomics Consortium (2017). Genetic correlation between amyotrophic lateral sclerosis and schizophrenia. *Nat. Commun.* 8, 14774.
- Miki, H., Setou, M., Kaneshiro, K., and Hirokawa, N. (2001). All kinesin superfamily protein, KIF, genes in mouse and human. *Proc. Natl. Acad. Sci. USA* 98, 7004–7011.
- Millecamps, S., and Julien, J.-P. (2013). Axonal transport deficits and neurodegenerative diseases. *Nat. Rev. Neurosci.* 14, 161–176.
- Morton, S., Hesson, L., Peggie, M., and Cohen, P. (2008). Enhanced binding of TBK1 by an optineurin mutant that causes a familial form of primary angle glaucoma. *FEBS Lett.* 582, 997–1002.
- Nakajima, K., Yin, X., Takei, Y., Seog, D.-H., Homma, N., and Hirokawa, N. (2012). Molecular motor KIF5A is essential for GABA(A) receptor transport, and KIF5A deletion causes epilepsy. *Neuron* 76, 945–961.
- Nishimura, A.L., Mitne-Neto, M., Silva, H.C.A., Richieri-Costa, A., Middleton, S., Cascio, D., Kok, F., Oliveira, J.R.M., Gillingwater, T., Webb, J., et al. (2004). A mutation in the vesicle-trafficking protein VAPB causes late-onset spinal muscular atrophy and amyotrophic lateral sclerosis. *Am. J. Hum. Genet.* 75, 822–831.
- Nishimura, A.L., Al-Chalabi, A., and Zatz, M. (2005). A common founder for amyotrophic lateral sclerosis type 8 (ALS8) in the Brazilian population. *Hum. Genet.* 118, 499–500.
- Palomo, G.M., and Manfredi, G. (2015). Exploring new pathways of neurodegeneration in ALS: the role of mitochondria quality control. *Brain Res.* 1607, 36–46.
- Patzkó, A., and Shy, M.E. (2011). Update on Charcot-Marie-Tooth disease. *Curr. Neurol. Neurosci. Rep.* 11, 78–88.
- Pe'er, I., Yelensky, R., Altshuler, D., and Daly, M.J. (2008). Estimation of the multiple testing burden for genomewide association studies of nearly all common variants. *Genet. Epidemiol.* 32, 381–385.
- Reid, E., Kloos, M., Ashley-Koch, A., Hughes, L., Bevan, S., Svenson, I.K., Graham, F.L., Gaskell, P.C., Dearlove, A., Pericak-Vance, M.A., et al. (2002). A kinesin heavy chain (KIF5A) mutation in hereditary spastic paraplegia (SPG10). *Am. J. Hum. Genet.* 71, 1189–1194.
- Renton, A.E., Majounie, E., Waite, A., Simón-Sánchez, J., Rollinson, S., Gibbs, J.R., Schymick, J.C., Laaksovirta, H., van Swieten, J.C., Myllykangas, L., et al.; ITALSGEN Consortium (2011). A hexanucleotide repeat expansion in C9ORF72 is the cause of chromosome 9p21-linked ALS-FTD. *Neuron* 72, 257–268.
- Renton, A.E., Chiò, A., and Traynor, B.J. (2014). State of play in amyotrophic lateral sclerosis genetics. *Nat. Neurosci.* 17, 17–23.
- Robberecht, W., and Eykens, C. (2015). The genetic basis of amyotrophic lateral sclerosis. *Adv. Genomics Genet.* 5, 327–345.
- Rosen, D.R., Siddique, T., Patterson, D., Figlewicz, D.A., Sapp, P., Hentati, A., Donaldson, D., Goto, J., O'Regan, J.P., Deng, H.X., et al. (1993). Mutations in Cu/Zn superoxide dismutase gene are associated with familial amyotrophic lateral sclerosis. *Nature* 362, 59–62.
- Salvi, E., Kotalik, Z., Glorioso, N., Benaglio, P., Frau, F., Kuznetsova, T., Arima, H., Hoggart, C., Tichet, J., Nikitin, Y.P., et al. (2012). Genomewide association study using a high-density single nucleotide polymorphism array and case-control design identifies a novel essential hypertension susceptibility locus in the promoter region of endothelial NO synthase. *Hypertension* 59, 248–255.
- Setou, M., Seog, D.-H., Tanaka, Y., Kanai, Y., Takei, Y., Kawagishi, M., and Hirokawa, N. (2002). Glutamate-receptor-interacting protein GRIP1 directly steers kinesin to dendrites. *Nature* 417, 83–87.
- Shatunov, A., Mok, K., Newhouse, S., Weale, M.E., Smith, B., Vance, C., Johnson, L., Veldink, J.H., van Es, M.A., van den Berg, L.H., et al. (2010).

- Chromosome 9p21 in sporadic amyotrophic lateral sclerosis in the UK and seven other countries: a genome-wide association study. *Lancet Neurol.* 9, 986–994.
- Smith, B.N., Ticozzi, N., Fallini, C., Gkazi, A.-S., Topp, S., Kenna, K.P., Scotter, E.L., Kost, J., Keagle, P., Miller, J.W., et al.; SLAGEN Consortium (2014). Exome-wide rare variant analysis identifies TUBA4A mutations associated with familial ALS. *Neuron* 84, 324–331.
- Smith, E.F., Shaw, P.J., and De Vos, K.J. (2017). The role of mitochondria in amyotrophic lateral sclerosis. *Neurosci. Lett.* Published online June 30, 2017. <https://doi.org/10.1016/j.neulet.2017.06.052>.
- Tanaka, Y., Kanai, Y., Okada, Y., Nonaka, S., Takeda, S., Harada, A., and Hirokawa, N. (1998). Targeted disruption of mouse conventional kinesin heavy chain, kif5B, results in abnormal perinuclear clustering of mitochondria. *Cell* 93, 1147–1158.
- Taylor, J.P., Brown, R.H., Jr., and Cleveland, D.W. (2016). Decoding ALS: from genes to mechanism. *Nature* 539, 197–206.
- Thiel, C., Kessler, K., Giessl, A., Dimmler, A., Shalev, S.A., von der Haar, S., Zenker, M., Zahnleiter, D., Stöss, H., Beinder, E., et al. (2011). NEK1 mutations cause short-rib polydactyly syndrome type majewski. *Am. J. Hum. Genet.* 88, 106–114.
- Tompson, S.W.J., Ruiz-Perez, V.L., Blair, H.J., Barton, S., Navarro, V., Robson, J.L., Wright, M.J., and Goodship, J.A. (2007). Sequencing EVC and EVC2 identifies mutations in two-thirds of Ellis-van Creveld syndrome patients. *Hum. Genet.* 120, 663–670.
- van Es, M.A., Veldink, J.H., Saris, C.G.J., Blauw, H.M., van Vught, P.W.J., Birve, A., Lemmens, R., Schelhaas, H.J., Groen, E.J.N., Huisman, M.H.B., et al. (2009). Genome-wide association study identifies 19p13.3 (UNC13A) and 9p21.2 as susceptibility loci for sporadic amyotrophic lateral sclerosis. *Nat. Genet.* 41, 1083–1087.
- van Es, M.A., Hardiman, O., Chio, A., Al-Chalabi, A., Pasterkamp, R.J., Veldink, J.H., and van den Berg, L.H. (2017). Amyotrophic lateral sclerosis. *Lancet* 390, 2084–2098.
- van Rheenen, W., Shatunov, A., Dekker, A.M., McLaughlin, R.L., Diekstra, F.P., Pulit, S.L., van der Spek, R.A.A., Vösa, U., de Jong, S., Robinson, M.R., et al.; PARALS Registry; SLALOM Group; SLAP Registry; FALS Sequencing Consortium; SLAGEN Consortium; NNIPPS Study Group (2016). Genome-wide association analyses identify new risk variants and the genetic architecture of amyotrophic lateral sclerosis. *Nat. Genet.* 48, 1043–1048.
- Vance, C., Rogelj, B., Hortobágyi, T., De Vos, K.J., Nishimura, A.L., Sreedharan, J., Hu, X., Smith, B., Ruddy, D., Wright, P., et al. (2009). Mutations in FUS, an RNA processing protein, cause familial amyotrophic lateral sclerosis type 6. *Science* 323, 1208–1211.
- Wang, L., and Brown, A. (2010). A hereditary spastic paraplegia mutation in kinesin-1A/KIF5A disrupts neurofilament transport. *Mol. Neurodegener.* 5, 52–64.
- Wang, W.-Y., Pan, L., Su, S.C., Quinn, E.J., Sasaki, M., Jimenez, J.C., Mackenzie, I.R.A., Huang, E.J., and Tsai, L.-H. (2013). Interaction of FUS and HDAC1 regulates DNA damage response and repair in neurons. *Nat. Neurosci.* 16, 1383–1391.
- Willer, C.J., Li, Y., and Abecasis, G.R. (2010). METAL: fast and efficient meta-analysis of genomewide association scans. *Bioinformatics* 26, 2190–2191.
- Wu, C.-H., Fallini, C., Ticozzi, N., Keagle, P.J., Sapp, P.C., Piotrowska, K., Lowe, P., Koppers, M., McKenna-Yasek, D., Baron, D.M., et al. (2012). Mutations in the profilin 1 gene cause familial amyotrophic lateral sclerosis. *Nature* 488, 499–503.
- Xia, C.-H., Roberts, E.A., Her, L.-S., Liu, X., Williams, D.S., Cleveland, D.W., and Goldstein, L.S.B. (2003). Abnormal neurofilament transport caused by targeted disruption of neuronal kinesin heavy chain KIF5A. *J. Cell Biol.* 161, 55–66.

STAR★METHODS

KEY RESOURCES TABLE

REAGENT or RESOURCE	SOURCE	IDENTIFIER
Chemicals, Peptides, and Recombinant Proteins		
TRIzol Reagent	Thermo Fisher Scientific	Cat# 15596026
RNA-to-cDNA Kit	Applied Biosystems	Cat# 4368814
RNase Inhibitor	Applied Biosystems	Cat# 4374966
OneTaq Hot Start DNA Polymerase	New England BioLabs	Cat# M0481S
Critical Commercial Assays		
HumanOmniExpress-24 DNA Analysis Kit	Illumina	Cat# WG-312-3007
TruSeq Exome Enrichment Kit	Illumina	Cat# FC-121-1096
TruSeq PE Cluster Kit	Illumina	Cat# PE-401-3001
TruSeq SBS Kit	Illumina	Cat# FC-401-3001
TrueSeq DNA PCR-free Kit	Illumina	Cat# 20000902
HiSeq X Ten Reagent Kit	Illumina	Cat# FC-501-2501
Oligonucleotides		
F1 primer sequence: CAGTGGAGCCACATCTTCTG	Operon Technologies	N/A
R1 primer sequence: TCTCTTGGTGGAGAGGGAAA	Operon Technologies	N/A
F2 primer sequence: CCAACATGGACAATGGAGTGA	Operon Technologies	N/A
Software and Algorithms		
ASSEDA	Tompson et al., 2007	http://www.cytogenomix.com/?post_type=duka&p=2670
BWA	Wellcome Trust Sanger Institute	http://bio-bwa.sourceforge.net
GenABEL	The GenABEL Project	http://www.genabel.org
GATK	Broad Institute	https://software.broadinstitute.org/gatk/
id_geno_checksum	Broad Institute	https://personal.broadinstitute.org/sripke/share_links/checksums_download/
KING	Manichaikul et al., 2010	http://people.virginia.edu/~wc9c/KING/
LASER	University of Michigan	http://csg.sph.umich.edu/chaolong/LASER/
Mach2dat	Marchini and Howie, 2010	https://genome.sph.umich.edu/wiki/Mach2dat:_Association_with_MACH_output
METAL	Willer et al., 2010	http://csg.sph.umich.edu/abecasis/metal/index.html
Minimac3	Das et al., 2016	https://genome.sph.umich.edu/wiki/Minimac3
PLINK	Chang et al., 2015	http://zzz.bwh.harvard.edu/plink/
R	R Core Team	https://www.r-project.org
SHAPEIT	Delaneau et al., 2013	https://mathgen.stats.ox.ac.uk/genetics_software/shapeit/shapeit.html
dbNSFP	Liu et al., 2013	http://varianttools.sourceforge.net/Annotation/DbNSFP
Other		
Genotyped data	Current paper	https://www.ncbi.nlm.nih.gov/projects/gap/cgi-bin/study.cgi?study_id=phs000101.v4.p1

CONTACT FOR REAGENT AND RESOURCE SHARING

Further information and requests for resources and reagents should be directed to and will be fulfilled by the Lead Contact, John Landers (john.landerson@umassmed.edu).

EXPERIMENTAL MODEL AND SUBJECT DETAILS

Study cohorts

GWAS cohort I

We undertook a GWAS of patients diagnosed with ALS (case cohort) and neurologically normal control individuals (control cohort). DNA was extracted from either whole blood or frozen brain tissue samples using standard procedures. All 12,663 patients included in the case cohort had been diagnosed with ALS according to the El Escorial criteria (Brooks, 1994) by a neurologist specializing in ALS, had onset of symptoms after age 18 years, and were of non-Hispanic white race/ethnicity. Both patients with familial ALS and patients with sporadic ALS were included in the analysis.

For the control cohort, we used genotype data obtained from (a) the database of Genotypes and Phenotypes (dbGaP) web repository (n = 44,017 US samples); (b) the HYPERGENES Project (n = 887 Italian samples) (Salvi et al., 2012); and (c) the Wellcome Trust Case Control Consortium (n = 5,663 British samples). An additional 2,112 US and Italian control samples were genotyped in the Laboratory of Neurogenetics, National Institute on Aging. The control cohort was matched to the case cohort for race and ethnicity, but not for age or sex. A detailed description of the cohorts is available in Tables S1 and S2.

Written consent was obtained from all individuals enrolled in this study, and the study was approved by the institutional review board approval of the National Institute on Aging (protocol number 03-AG-N329).

GWAS cohort II

Summary statistics from a recently published GWAS based on logistic regression analysis involving 12,577 cases and 23,475 controls were downloaded from the Project MinE Variant Browser. Additional details of the cohorts used in this study are available in van Rheenen et al. (2016).

FALS discovery cohort

A total of 1,463 FALS patients were included in the initial cohort (pre-QC). Patients were recruited at specialist clinics in Australia (n = 92), Belgium (n = 13), Canada (n = 34), Germany (n = 228), Ireland (n = 18), Israel (n = 26), Italy (n = 230), Netherlands (n = 50), Spain (n = 60), Turkey (n = 72), UK (n = 223), and USA (n = 417). All samples were exome sequenced except those from the Netherlands which were whole genome sequenced. Familial history was considered positive for ALS if the proband had at least one affected relative within three degrees of relatedness.

Control discovery cohort

Read level sequencing data were obtained from dbGAP and the European Genome-Phenome Archive (EGA) and are listed in Table S5.

ALS WXS/WGS replication cohort

Replication analyses included sequencing data for a further 9,046 ALS cases and 1,955 non-ALS controls that were not also represented in the FALS discovery set. These samples included 2,742 cases subjected to WXS by the ALS Sequencing Consortium, as described previously (Cirulli et al., 2015); 719 cases subjected to WXS by the Laboratory of Neurogenetics, National Institute on Aging; 307 cases and 296 controls subjected to WGS by the Laboratory of Neurogenetics, National Institute on Aging; 155 cases subjected to WGS by the CREATe Consortium; 1,017 cases subjected to WGS by the NYGC ALS Consortium, Genomic Translation for ALS Care (GTAC) Consortium and Answer ALS Foundation; and 4,100 cases and 1,659 controls subjected to WGS by the Project MinE Sequencing Consortium.

All samples included in the case cohort had been diagnosed with ALS according to the El Escorial criteria (Brooks, 1994) by a neurologist specializing in ALS. We received approval for this study from the institutional review boards of the participating centers, and written informed consent was obtained from all patients (consent for research).

METHOD DETAILS

Data generation and pre-processing

Generation of SNP array callset

The case cohort (n = 12,663 samples) and part of the control cohort (n = 2,112) were genotyped in the Laboratory of Neurogenetics, National Institute on Aging, using HumanOmniExpress BeadChips (version 1.0, Illumina, San Diego, CA) according to the manufacturer's protocol. These SNP genotyping arrays assay 716,503 SNPs across the genome. Individual-level genotypes for these samples are available on the dbGaP web portal (accession number phs000101.v4.p1). The remainder of the control cohort had been previously genotyped on HumanOmni BeadChips (Illumina) as part of other GWAS efforts (Table S2). Analyses were confined to the 595,692 autosomal SNPs that were common across the SNP genotyping arrays.

Generation of *FALS* case-control callset for exome-wide RVB discovery analysis

Exome sequencing of cases was performed as previously described (Kenna et al., 2016). Control exome sequences were generated as described under the relevant dbGAP and EGA project accessions. Sequence reads were aligned to human reference GRCh37 using BWA (Burrows-Wheeler Aligner) and processed according to recommended Genome Analysis Toolkit's (GATK) best practices (<https://software.broadinstitute.org/gatk/best-practices/>). Joint variant detection and genotyping of all samples were performed using the GATK HaplotypeCaller. Variant quality control was performed using the GATK variant quality score recalibration method with default filters. A minimum variant quality by depth (QD) score of 2 was also imposed and all genotypes associated with genotype quality (GQ) < 20 were reset to missing. Variants were also excluded in the event of case or control call rates < 70% (post genotype QC). Identified variants can be viewed through our web based ALS Variant Server (see link below).

Generation of *ALS* case-control callset for *KIF5A* replication analysis

Data for the *KIF5A* locus was extracted from all independently generated sequencing datasets and remapped to GRCh37. Variant calling was performed using the GATK haplotype caller as described above. In addition to the *KIF5A* locus, data was also extracted for a panel of 240,715 common variant sites and used to perform a single unified sample QC as described below.

Functional annotation of variants identified by WXS/WGS

Variant calls were assigned predicted functional consequences using snpEFF (Single Nucleotide Polymorphism Effect) (Cingolani et al., 2012), dbNSFP (A Database of Human Non-synonymous SNVs and Their Functional Predictions and Annotations) (Liu et al., 2013) and dbSNV (database of splice site consequences of Single Nucleotide Variants) (Jian et al., 2014), which is incorporated into dbNSFP. Variants were classified as "loss of function" (LOF) where the sequence change was predicted to encode a premature stop codon, a frameshift causing insertion-deletion or a splice site disrupting SNV. Variants were classified as potentially splice altering if assigned an "ada" or "rf" score > 0.7 by dbSNV. Splice variants of potential interest were further assessed for putative effects on exon skipping using a secondary algorithm - automated splice site and exon definition server (ASSEDA) (Tompson et al., 2007).

RT-PCR Analysis

Total RNA was prepared from lymphoblast lines using Trizol reagent. Reverse transcription using Applied Biosystems RNA to cDNA kit (# 4368814) was performed with 0.5 µg with RNase inhibitor in a 20 µl reaction according to the manufacturer's protocol. PCR was carried out using New England Biolabs One Taq Hot Start DNA Polymerase (# M0481S), 2 µl RT reaction (representing 50 ng input RNA) and forward and reverse primer (0.15 µM each) in a 20 µl reaction volume. Amplification conditions were as follows: 94°C for 30 s, {94°C for 20 s, 58°C for 20 s, 68°C for 1 minute} x 35 cycles, followed by an extension stage of 68°C for 5 minutes and a 4°C hold. Amplification of both normal and mutant splice forms used primers F1 (CAGTGGAGCCACATCTTCTG) and R1 (TCTCTTGGTGA GAGGGAAA). Primers used for the specific amplification of the mutant splice form were F2 (CCAACATGGACAATGGAGTGA), which spans exons 26 and 28, and R1.

QUANTIFICATION AND STATISTICAL ANALYSIS

Statistical analyses

Analysis of SNP array genotypes

Standard quality-control procedures were applied to our genotype data using PLINK software package (version 1.9) (Chang et al., 2015), and a summary of the workflow is shown in Figure S1. We excluded samples that demonstrated: call rates of less than 97.5%; non-European ancestry; abnormal *F* inbreeding coefficient; mismatch between phenotypic and genotypic gender; or, cryptic relatedness defined as identity-by-descent proportion of inheritance (π_{hat} from PLINK) greater than 0.125. Samples in common between our study and van Rheenen's study were identified using the checksum program `id_genos_checksum` and were removed from our analyses. We excluded palindromic SNPs, as well as SNPs with: call rates less than 95% in the US and Italian cohorts or less than 99% in the UK, French and Belgium cohorts; minor allele frequency less than 0.05 in the control cohorts; Hardy-Weinberg equilibrium *P* less than 10^{-7} in the US and Italian control cohorts and less than 10^{-5} in the UK, French and Belgium cohorts; miss-ingness by case-control status *P* less than 10^{-5} ; or SNPs associated between the UK and French control cohorts with *P* less than 5.0×10^{-8} . After quality control, 8,229 case and 36,329 control samples were included in the analysis, and 436,746 SNPs were available for imputation in the USA and Italy cohorts, and 420,131 SNPs were available in the UK, French and Belgium cohorts.

Estimation of the haplotypes was performed with SHAPEIT (version 2.r790) (Delaneau et al., 2013). Imputation was performed for individual batches based on ethnicity using the 1000 Genomes Project dataset (phase 3, version 5a, release 2013-05-02, <http://www.internationalgenome.org/>) as reference and using Minimac3 software (version 1.0.11) (Das et al., 2016) with default settings. After imputation, principal components were calculated using PLINK software after removing known hypervariable regions and the 1 MB surrounding the *C9orf72* region. After analysis of the Scree plots, 2 to 4 principal components were retained per cohort as covariates in the association analyses to compensate for any residual population stratification.

Logistic regression was performed per batch using mach2dat software (version 1.0.24) (Marchini and Howie, 2010) incorporating 2 to 4 principal components, age and gender as covariates, with dosage of imputed SNPs selected based on a Minimac3 R^2 value of imputation accuracy greater than 0.3. SNPs with an absolute beta coefficient value above 5 or with a minor allele frequency less

than 0.01 were excluded from meta-analysis. Meta-analysis was then performed combining the association results of the 13 batches of our individual-level studies with van Rheenen's study summary statistics using METAL software (version 2011-03-25) (Willer et al., 2010) under an inverse-weighted, fixed effect model. A threshold P of 5.0×10^{-8} was set for genome-wide significance after Bonferroni correction for multiple testing in the GWAS (Pe'er et al., 2008).

The programming code used to analyze these data is freely available on GitHub (https://github.com/AudeDN/ALS_GWAS_1000G_mach2dat_2017), and GWAS summary statistics results for all tested SNPs are available from https://www.ncbi.nlm.nih.gov/projects/gap/cgi-bin/study.cgi?study_id=phs000101.v4.p1.

Analysis of WXS/WGS genotypes

For both the discovery and replication phases, samples were excluded from the study in the event of failing to meet standard genotype call rate, heterozygosity, duplication, relatedness or population stratification filters as summarized in Table S6. Each of these filters was performed using a set of autosomal markers meeting all of the following criteria: call rate > 0.95, minor allele frequency (MAF) > 0.01, $p > 0.001$ for deviation from Hardy-Weinberg equilibrium, linkage disequilibrium pruning ($R^2 < 0.5$, window size = 50, step = 5). Filtering of autosomal markers, sample call rate assessments and sample heterozygosity assessments were performed using PLINK software. Study duplicates and sample relatedness within the WXS/WGS cohorts was identified using KING software (Manichaikul et al., 2010). Study duplicates between WXS/WGS cohorts and GWAS datasets were identified using the checksum program `id_geno_checksum`. LASER was used to generate PCA coordinates for samples from the Human Genome Diversity Panel (HGDP). Samples from the FALS discovery cohort were then mapped to this reference co-ordinate space. The discovery cohort was restricted to cases and controls occurring within 3 standard deviations of the mean for European HGDP samples along principal components 1-4.

RVB analyses were performed by penalized logistic regression of case-control status with respect to number of minor alleles observed per sample per gene with and MAF < 0.001. Analyses were only performed where the dataset contained more than 3 variant allele occurrences. Replication analyses of rs113247976 were performed using the same logistic regression protocol as used for RVB analyses. All analyses were conditioned on the first 4 eigenvectors generated by principal components analysis of common variant profiles. Genomic inflation factors were calculated using genome-wide association analysis for quantitative, binary and time-to-event traits using GenABEL software. Candidate associations were tested for signs of call-rate or subcohort biases as outlined in Figures S6 and S7. Meta-analysis of rs113247976 association results between sequencing and GWAS was performed using METAL. Unless otherwise indicated, all statistical analyses were performed using R (version 3.2.0).

Control-control analyses

To identify genes potentially subject to confounding biases in FALS RVB analyses and to assess the potential impact of batch effects with non-ALS-related data, population or phenotypic stratifiers, the control sample cohort was divided into 28 pseudo case-control groups based on the sequencing center or associated dbGaP / EGA project (Table S5). Genes shown in gray achieve for possible confounder association. Loci achieving a minimum $p < 1 \times 10^{-3}$ were deemed as displaying possible association with non-ALS related batch effects.

DATA AND SOFTWARE AVAILABILITY

Datasets

The programming code used to analyze the GWAS data including the imputation with SHAPEIT and Minimac3, individual-based association analysis using Mach2dat and a meta-analysis using METAL is freely available on GitHub: https://github.com/AudeDN/ALS_GWAS_1000G_mach2dat_2017. GWAS summary statistics results for all tested SNPs and identified SNVs from our 1,138 FALS cohort used for the RVB analysis can be viewed through our web based ALS Variant Server (<http://als.umassmed.edu>). For each variant, information on over 50 annotation fields and the results can be downloaded directly into Excel. The accession number for the genotyped data reported in this paper is dbGaP: phs000101.v4 (https://www.ncbi.nlm.nih.gov/projects/gap/cgi-bin/study.cgi?study_id=phs000101.v4.p1).

Data Resources and Databases

1000 Genomes Project dataset: <http://www.internationalgenome.org>
 Database of Genotypes and Phenotypes (dbGaP): <https://www.ncbi.nlm.nih.gov/gap>
 dbNSFP: <https://sites.google.com/site/jpopgen/dbNSFP>
 dbSNV: incorporated into dbNSFP (see previous link).
 European Genome-phenome Archive (EGA): <https://ega-archive.org>
 HapMap project: <http://www.sanger.ac.uk/resources/downloads/human/hapmap3.html>.
 Human Genome Diversity Panel (HGDP): <http://www.hagsc.org/hgdp/>
 HYPERGENES Project: https://cordis.europa.eu/project/rcn/86758_en.html
 Project MinE Variant Browser: <http://databrowser.projectmine.com>
 snpEFF: <http://snpeff.sourceforge.net/SnpEff.html>
 Wellcome Trust Case Control Consortium: <https://www.wtccc.org.uk/>

Software

ASSED: http://www.cytognomix.com/?post_type=duka&p=2670

BWA: <http://bio-bwa.sourceforge.net>

GenABEL: <http://www.genabel.org>

GATK: <https://software.broadinstitute.org/gatk/>

id_geno_checksum: https://personal.broadinstitute.org/sripke/share_links/checksums_download/

KING: <http://people.virginia.edu/~wc9c/KING/>

LASER: <http://csg.sph.umich.edu/chaolong/LASER/>

Mach2dat: https://genome.sph.umich.edu/wiki/Mach2dat:_Association_with_MACH_output

METAL: <http://csg.sph.umich.edu/abecasis/metal/index.html>

Minimac3: <https://genome.sph.umich.edu/wiki/Minimac3>

PLINK: <http://zzz.bwh.harvard.edu/plink/>

R: <https://www.r-project.org>

SHAPEIT: https://mathgen.stats.ox.ac.uk/genetics_software/shapeit/shapeit.html