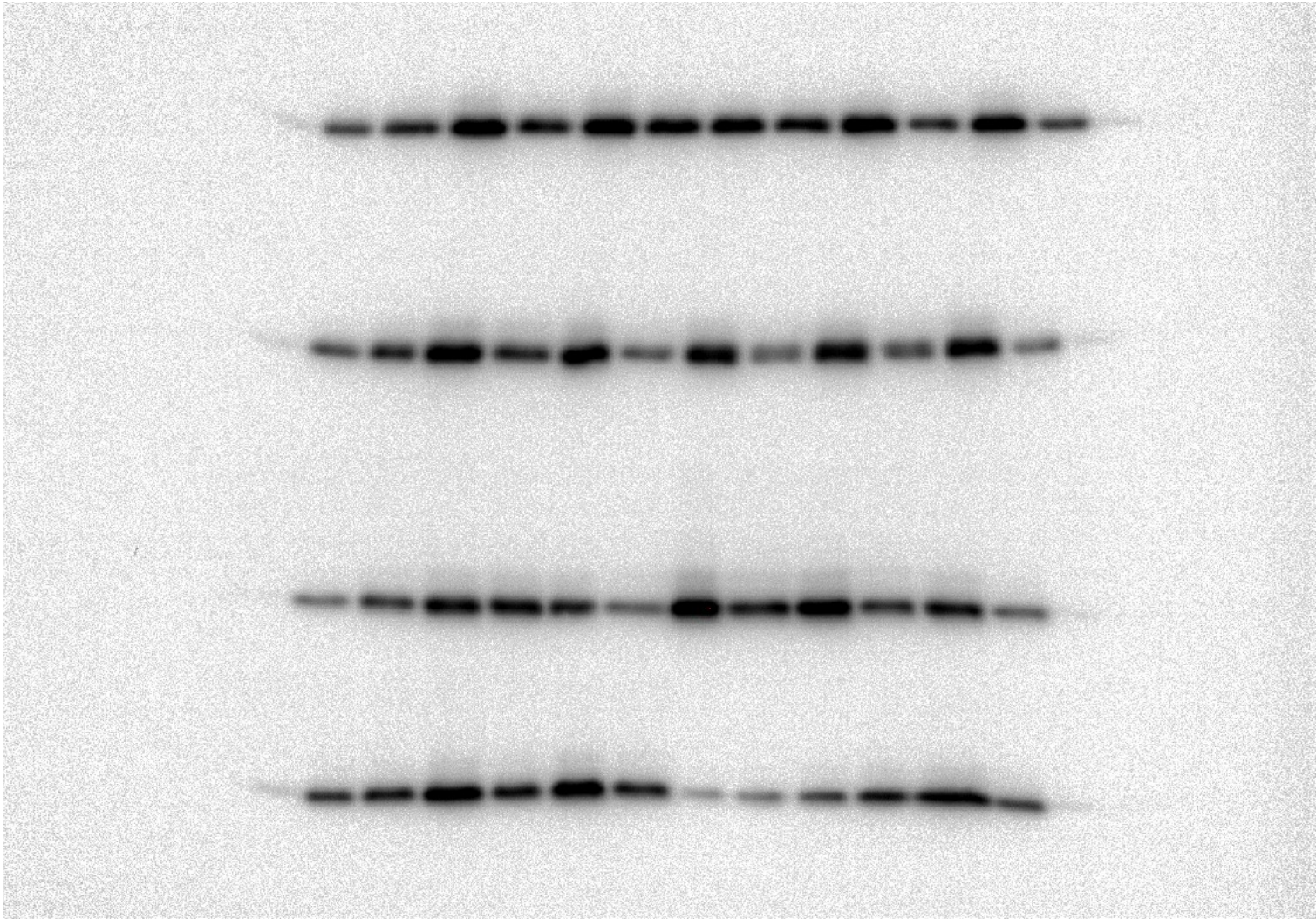


# **Quantitative proteomic characterization of cellular pathways associated with altered insulin sensitivity in skeletal muscle following high-fat diet feeding and exercise training**

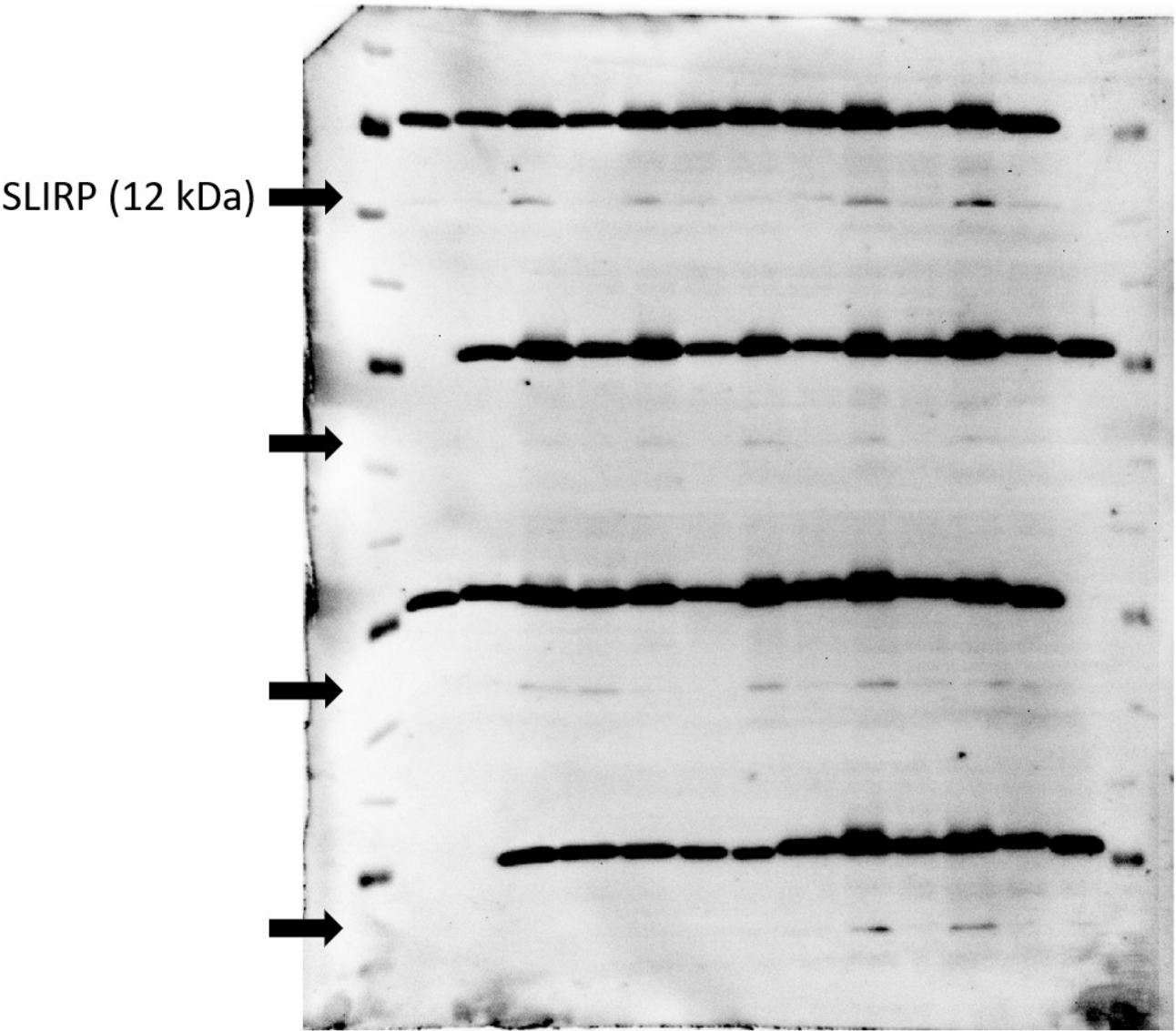
Maximilian Kleinert<sup>1,2,3,4</sup>, Benjamin L. Parker<sup>5</sup>, Thomas E. Jensen<sup>1</sup>, Steffen H. Raun, Phung Pham<sup>2</sup>, Xiuqing Han<sup>1</sup>, David E. James<sup>5</sup>, Erik A. Richter<sup>1</sup>, Lykke Sylow<sup>1#</sup>

## **Supplemental Info – Raw Blots related to Figure 4**

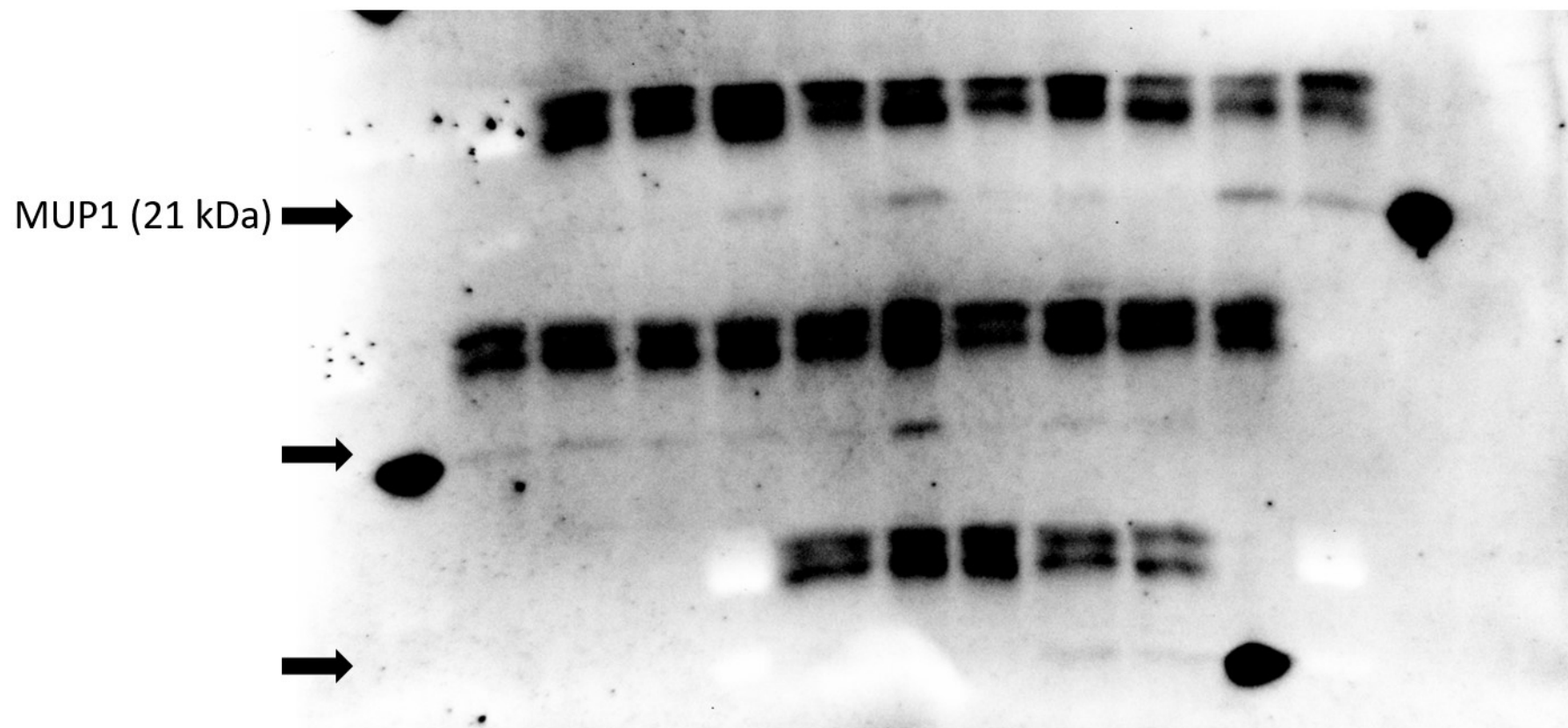
ACOT13



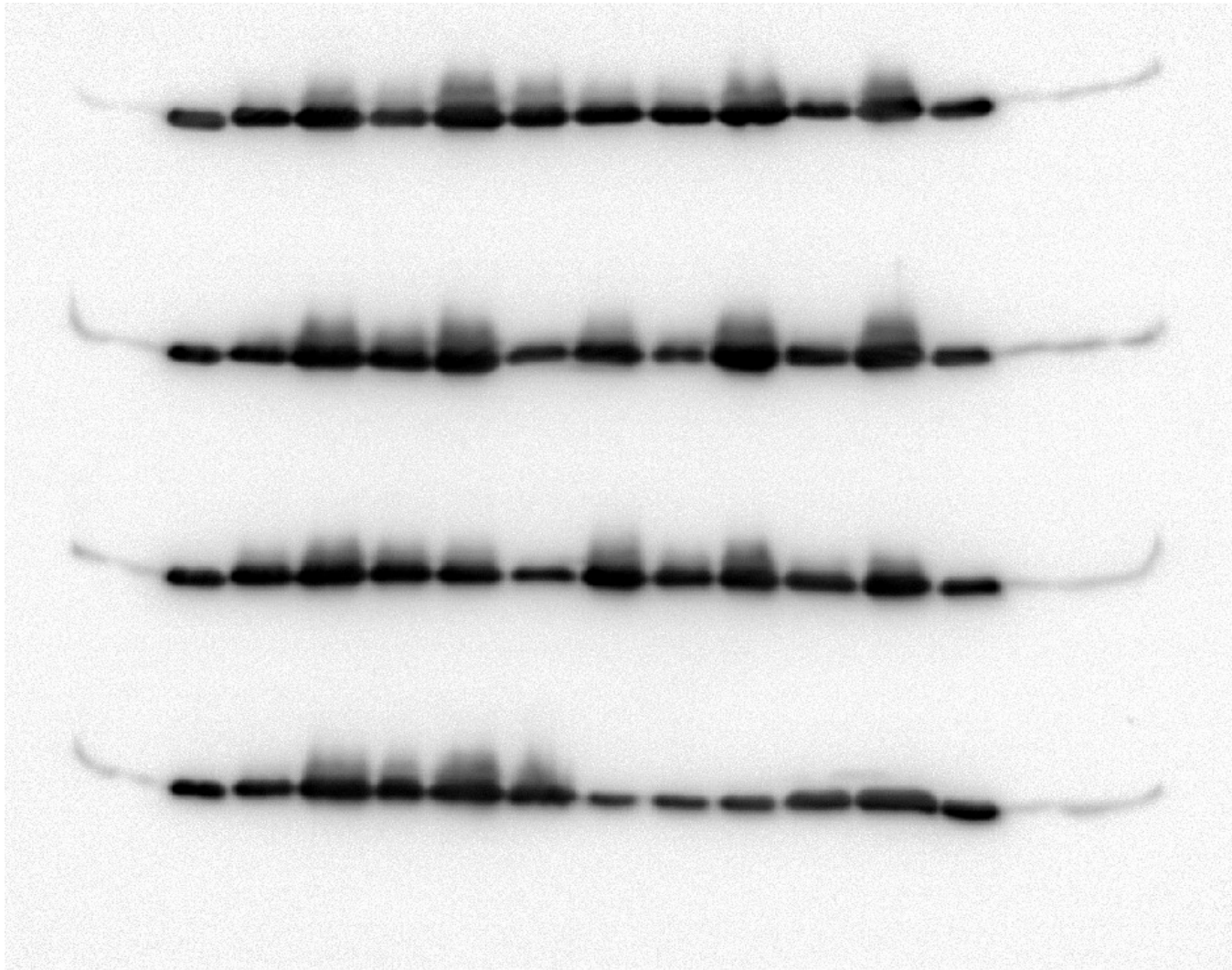
SLIRP



MUP1



# Myoglobin





# Coomassie Stain

