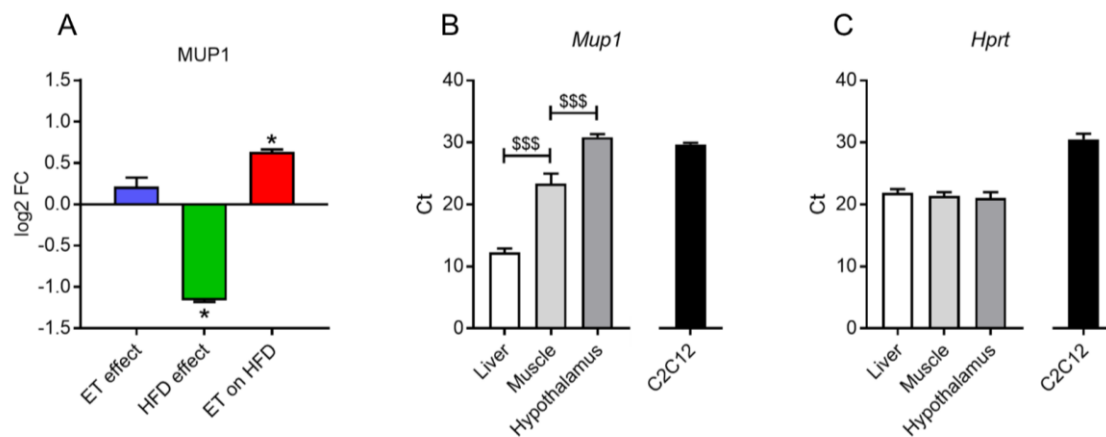


## Supplemental Figure

### Quantitative proteomic characterization of cellular pathways associated with altered insulin sensitivity in skeletal muscle following high-fat diet feeding and exercise training

Maximilian Kleinert<sup>1,2,3,4</sup>, Benjamin L. Parker<sup>5</sup>, Thomas E. Jensen<sup>1</sup>, Steffen H. Raun, Phung Pham<sup>2</sup>, Xiuqing Han<sup>1</sup>, David E. James<sup>5</sup>, Erik A. Richter<sup>1</sup>, Lykke Sylow<sup>1#</sup>



**Supplemental Figure 1.** MUP1 protein regulation, as detected in the proteome, by the indicated interventions (A). Cycle threshold (Ct) values for *Mup1* and *Hprt* (used as a housekeeper) (B,C) in indicated tissues (n = 3-5). Data are means  $\pm$  SEM. \$\$\$p < 0.001 between the indicated groups. \*q < 0.05 and fold-change  $\pm$  50%.