

1 **Fluorescent blood brain barrier tracing shows intact leptin transport in obese mice**

2 Luke Harrison<sup>1,2,3,4</sup>, Sonja C. Schriever<sup>1,2,3</sup>, Annette Feuchtinger<sup>5</sup>, Eleni Kyriakou<sup>6,7</sup>, Peter  
3 Baumann<sup>1,2,3,4</sup>, Katrin Pfuhlmann<sup>2,3,4</sup>, Ana C. Messias<sup>6,7</sup>, Axel Walch<sup>5</sup>, Matthias H. Tschöp<sup>2,3,4</sup>  
4 and Paul T. Pfluger<sup>1,2,3</sup>

5

6 1 Research Unit Neurobiology of Diabetes, Helmholtz Zentrum München, 85764 Neuherberg,  
7 Germany.

8 2 Institute for Diabetes and Obesity, Helmholtz Zentrum München, 85764 Neuherberg,  
9 Germany.

10 3 German Center for Diabetes Research (DZD), 85764 Neuherberg, Germany.

11 4 Division of Metabolic Diseases, Technische Universität München, 80333 Munich, Germany.

12 5 Research Unit Analytical Pathology, Helmholtz Zentrum München, 85764 Neuherberg,  
13 Germany.

14 6 Institute of Structural Biology, Helmholtz Zentrum München, 85764 Neuherberg, Germany

15 7 Biomolecular NMR and Center for Integrated Protein Science Munich at Department  
16 Chemistry, Technical University Munich, 85747 Garching, Germany

17

18

19

20

21

22

23

24

25

26

1  
2  
3  
4  
5  
6  
7  
8  
9  
10  
11  
12  
13  
14  
15  
16  
17  
18  
19  
20  
21  
22  
23  
24  
25  
26

Contact information:

Dr. Paul T. Pfluger

Research Unit NeuroBiology of Diabetes

Helmholtz Zentrum München GmbH

Ingolstädter Landstraße 1

85764 Neuherberg, Germany

Telefon +49 (0) 89 3187 2104 (Pfluger)

paul.pfluger@helmholtz-muenchen.de

Word count: 5880

Number of figures: 5

Number of tables: 0

Number of supplementary figures: 1

Number of supplementary videos: 5

1 **Abstract**

2 Background/Objectives

3 Individuals carrying loss-of-function gene mutations for the adipocyte hormone leptin are  
4 morbidly obese, but respond favorably to replacement therapy. Recombinant leptin is however  
5 largely ineffective for the vast majority of obese individuals due to leptin resistance. One theory  
6 underlying leptin resistance is impaired leptin transport across the blood-brain-barrier (BBB).  
7 Here, we aim to gain new insights into the mechanisms of leptin BBB transport, and its role in  
8 leptin resistance.

9 Methods

10 We developed a novel tool for visualizing leptin transport using infrared fluorescently labeled  
11 leptin, combined with tissue clearing and light-sheet fluorescence microscopy. We corroborated  
12 these data using western blotting.

13 Results

14 Using 3D whole brain imaging, we display comparable leptin accumulation in circumventricular  
15 organs of lean and obese mice, predominantly in the choroid plexus (CP). Protein quantification  
16 revealed comparable leptin levels in microdissected mediobasal hypothalami (MBH) of lean and  
17 obese mice ( $p = 0.99$ ). We further found increased leptin receptor expression in the CP ( $p =$   
18  $0.025$ ,  $p = 0.0002$ ) and a trend toward elevated leptin protein levels in the MBH ( $p = 0.17$ ,  $p =$   
19  $0.078$ ) of obese mice undergoing weight loss interventions by calorie restriction or exendin-4  
20 treatment.

21 Conclusions

22 Overall, our findings suggest a crucial role for the CP in controlling the transport of leptin into  
23 the cerebrospinal fluid and from there to target areas such as the MBH, potentially mediated via  
24 the leptin receptor. Similar leptin levels in circumventricular organs and the MBH of lean and  
25 obese mice further suggest intact leptin BBB transport in leptin resistant mice.

26

1 **Abbreviations:** ARC, arcuate nucleus; BBB, blood-brain barrier; CSF, cerebrospinal fluid; CP,  
2 choroid plexus; CR, calorie restriction; DIO, diet induced obese; EX4, exendin-4; HFD, high fat  
3 diet; I.P., intraperitoneal; LepR, leptin receptor; MBH, mediobasal hypothalamus; ME, median  
4 eminence; SFO, subfornical organ.

5



## 1 **Introduction**

2 Maintenance of energy homeostasis is the keystone in preventing obesity and the metabolic  
3 syndrome. The brain plays an important role in orchestrating this homeostasis by receiving  
4 inputs from peripheral tissues and responding by regulating various sensations such as reward  
5 and satiety. In addition to this, direct innervation as well as indirect signaling via hormones  
6 allows for a feedback system back to the peripheral organs (1). The transport of these peripheral  
7 signals into the brain and the target regions is regulated in a controlled manner by the blood  
8 brain barrier, in essence a layer of endothelial cells that divides the microvasculature from the  
9 brain compartment. Several cell types such as pericytes and astrocytes contribute to the  
10 architecture and function of the blood-brain barrier (BBB), which ultimately protects the brain  
11 from neurotoxins while governing the passive diffusion of gases and hydrophobic molecules as  
12 well as the active transport of hydrophilic nutrients, amino acids and large-scale peptide  
13 hormones (2, 3).

14 One such peptide hormone which requires active BBB transport is leptin, a 16 kDa hormone that  
15 is synthesized in white adipose tissue and released into circulation in direct proportion to the  
16 amount of body fat (4, 5). Leptin serves as an adipostat, i.e. it has the capacity to inform the rest  
17 of the body on available fat stores. The importance of leptin in the control of systemic energy  
18 homeostasis is demonstrated by clinical observations in people with genetic loss of leptin, which  
19 develop hyperphagia and morbid obesity in early childhood that can be reversed by leptin  
20 replacement therapy (6). Most obese subjects are however not deficient in leptin, but rather  
21 leptin resistant. Despite high circulating leptin levels, leptin resistant individuals typically  
22 experience a drive to eat extra calories, which impedes sustainable weight loss (7). Molecular  
23 reasons for leptin resistance are not yet entirely clear, but may entail impaired signaling linked  
24 to SOCS3 expression (8), elevated levels of circulating c-reactive protein (9) or impaired histone  
25 deacetylase activity in the hypothalamus (10). Moreover, impaired

1 transport of leptin into the brain is viewed as important contributor to leptin resistance (11). This  
2 is mainly supported by leptin transport studies that used radioactively labeled leptin and showed  
3 a decrease in blood-CSF leptin ratios, suggesting blunted leptin transport kinetics and thus a  
4 cause for leptin resistance (12). Similarly, El-Haschimi and colleagues performed a series of  
5 intracerebral ventricular (ICV) leptin injection experiments, which also indicated a decrease in  
6 leptin BBB transport (13).

7 Leptin must cross the BBB to reach its neuronal targets in the mediobasal hypothalamus (MBH)  
8 and other brain areas. How leptin is transported across the BBB and to its responder neurons,  
9 defined by their expression of the leptin receptor (LepR), is still a matter of debate (14). Past  
10 work hints that leptin BBB transport is facilitated by tanycytes, i.e. specialized ependymal cells  
11 in the median eminence (ME), a circumventricular organ at the bottom of the MBH involved in  
12 secreting brain derived signals to the pituitary and peripheral organs via the circulation (15, 16).  
13 In the ME, leptin can freely diffuse into the ME parenchyma due to the fenestration of  
14 capillaries and lack of a functional BBB. Subsequently, leptin is transported via tanycytes into  
15 the cerebrospinal fluid (CSF) of the ventricular space, from where it then laterally diffuses into  
16 the MBH (17). More recent work points towards a crucial direct involvement of endothelial cells  
17 of the BBB as major mechanism of leptin transport (18). The knockdown of LepR specifically  
18 in endothelial cells of the BBB was functionally linked to impaired transport of leptin into the  
19 CSF and LepR positive brain regions, and aggravated obesity when mice were exposed to high  
20 fat diet (18). Dense LepR expression is especially found in the choroid plexus (CP) (19), an  
21 important component of the BBB anchored to the walls of the lateral, central and fourth  
22 ventricle. Although the production of CSF is the most described role of the CP, it also acts as an  
23 important selective gateway to the CSF. Molecules that enter the CSF can freely diffuse into  
24 many brain regions that line the ventricles (20). Accordingly, the CP has been strongly linked to  
25 leptin transport into the brain (21).

1 Here, we aimed to gain new understanding in leptin BBB transport by visualizing and  
2 comparing leptin transport into the brain via whole mouse brain 3D imaging from lightsheet  
3 fluorescence microscopy. We furthermore aimed to address the question of whether leptin  
4 transport into the CP, ME and MBH is altered in diet-induced obese (DIO) and thus leptin  
5 resistant mice, compared to chow-fed and leptin sensitive lean control mice. Moreover, we  
6 compared leptin levels in the ME and MBH of DIO mice subjected to weight loss by either  
7 modest dieting, profound calorie restriction or repeated treatment with exendin-4, to clarify  
8 whether altered leptin transport into the MBH can explain the superior restoration of leptin  
9 sensitivity by pharmacology (22).

10

11

12

13

## 14 **Materials and methods**

### 15 **Animals**

16 All experiments were performed in adult male C57BL/6J mice purchased from Janvier Labs  
17 (Saint-Berthevin, Cedex, France). Mice were maintained on a 12-h light-dark cycle with free  
18 access to water and standard chow diet (Altromin, #1314) or 58% high fat diet (HFD) (Research  
19 Diets, D12331). Diet induced obese (DIO) mice were subjected to HFD for at least 20 weeks.  
20 Body composition was determined using nuclear magnetic resonance (NMR) technology  
21 (EchoMRI, Houston, TX, USA). For the diet intervention study, DIO mice were subdivided  
22 into 4 experimental groups. The group termed HFD was kept on HFD during the study. The  
23 remaining 3 groups of DIO mice were switched to chow on day 0 of the study and divided as  
24 follows: Diet switch (H>C) animals received ad libitum access to chow diet. Calorie restricted  
25 (CR) mice were restricted to the average food intake of the exendin-4 (EX4) group and EX4  
26 treated animals were subjected to daily injections of exendin-4 (0.08 mg/kg) (Tocris

1 biosciences, Bristol, UK) in the morning for up to 10 days. Age-matched mice fed chow were  
2 used as a control group. At the end of the diet-intervention study, all mice were first subjected to  
3 a single intraperitoneal (i.p.) injection of either vehicle or leptin, 45 minutes before being  
4 sacrificed by cervical dislocation for organ withdrawal. Brains were extracted swiftly and the  
5 ME and MBH dissected as described below. Recombinant murine leptin was reconstituted in 20  
6 mM Tris-HCl, pH 8.0 at a concentration of 5 mg/ml. This was then further diluted in saline (0.9  
7 % NaCl) to a final concentration of 1 mg/ml and injected at a dose of 5 mg/kg body weight.  
8 Mice were distributed into treatment groups based on their starting body weight. We thereby  
9 aimed to assure an equal distribution of starting body weights at the beginning of the study,  
10 which allows for better dissection of longitudinal treatments effects on body weight. *In vivo*  
11 experiments were performed without blinding of the investigators. All studies were based on  
12 power analyses to assure adequate sample sizes, and approved by the State of Bavaria,  
13 Germany. Investigators were not blinded for in-vivo studies.

14

#### 15 **Leptin coupling**

16 Leptin was coupled to either infra-red IRDye® CW-800 (LICOR #929-71012) or far-red  
17 IRDye® 650 (LICOR #929-70020) fluorescent dyes. Coupling was carried out according to the  
18 IRDye® CW-800 kit handbook. Lyophilized recombinant mouse leptin (R&D systems Cat.#  
19 498-OB-05M) was reconstituted in PBS with a pH of 8.5 to a final concentration of 1 mg/ml.  
20 The dye was reconstituted in RNase-free water and the appropriate volume was added to 1 ml  
21 of 1 mg/ml leptin, then incubated at 20°C for 2 h. Coupled leptin was separated from unbound  
22 dye by size exclusion column filtration (Pierce Zebra™ desalting spin columns, Life  
23 Technologies #89891). Dye solution not used for coupling was diluted to the same absorption  
24 value as that of the coupled leptin sample and used as a control. Largely avoiding freeze-thaw  
25 cycles, coupled leptin was stored in dark tubes and kept at 4°C for short-term storage and -20°C  
26 for long-term storage.

1

## 2 **Ion Exchange Purification**

3 To separate coupled from uncoupled leptin, we performed Ion Exchange Chromatography (IEX)  
4 using a Resource Q anion-exchange column with 1 ml volume (RESOURCE™ Q, GE  
5 Healthcare) at pH 8. The leptin-CW800 sample underwent a buffer exchange, by sequential  
6 concentration/dilution steps into 20 mM TRIS-HCl pH 8 (Buffer A). After loading the sample  
7 onto the column, the column was washed with 10 column volumes of Buffer A. Separation was  
8 then achieved by applying a salt gradient based on increasing ionic strength to 0.5 M NaCl (50%  
9 Buffer B; 20 mM TRIS-HCl buffer pH 8, 1M NaCl) at a flow rate of 4 ml/min and eluent  
10 volume of 20 columns. Finally, the column was washed with 5 column volumes of 100% Buffer  
11 B. For each fraction the purity and molecular weight was assessed by a Pierce BCA protein  
12 assay kit (Thermo Fisher Scientific Inc., Rockford, IL, USA) and SDS-PAGE, as described  
13 below.

14

## 15 **Median eminence and mediobasal hypothalamus dissection**

16 Under a dissecting microscope the ME can be seen as a thin structure following the sagittal  
17 plane, lying on top of the hypothalamus. It was possible to see the fenestrated blood vessels  
18 running along the ME. Using very fine forceps (Dumont, 5SPSF – Inox – B), and applying  
19 lightpressure parallel to either side of the ME, the ME was pinched away from the  
20 hypothalamus. Removing the ME causes a break in the third ventricle wall, and a small amount  
21 of fluid was seen leaving the ventricle. This may serve as confirmation that the ME was  
22 removed. To remove the MBH the brain was cut with a scalpel coronally, directly through the  
23 center of the hypothalamus. The two brain halves are then laid flat, to expose the hypothalamus  
24 face upwards. If the ME dissection was done correctly, the MBH will have a flat surface. If too  
25 much tissue was removed, it will have a concave surface. Using fine forceps, two 45° cuts were  
26 made vertically on either side of the MBH. A third cut was then made horizontally below the

1 MBH, allowing the MBH to be lifted from the brain. Tissues were snap frozen in liquid nitrogen  
2 and stored at -80°C.

3

#### 4 **Protein extraction and western blotting**

5 As ME and MBH samples only provide a very small amount of tissue, samples from 2 mice  
6 were pooled to provide sufficient protein levels for detection. Tissue lysis buffer consisted of  
7 RIPA buffer (Thermo Fisher Scientific Inc., Rockford, IL, USA) with the addition of 1x  
8 phosphatase- and protease-inhibitors (Thermo Fisher Scientific Inc., Rockford, IL, USA) and 1  
9 mM phenyl-methane-sulfonyl fluorid (PMSF). Using 200 µl of lysis buffer for MBH samples  
10 and 50 µl of lysis buffer for ME samples resulted in the most efficient protein extraction.  
11 Samples were lysed via sonication then rotated on a wheel for 30 min to ensure full suspension  
12 of the tissues in lysis buffer. Samples were then centrifuged at 12,000 x g for 7 min and the  
13 supernatants collected. Protein concentrations were measured using the Pierce BCA protein  
14 assay kit (Thermo Fisher Scientific Inc., Rockford, IL, USA), samples were then diluted to equal  
15 concentrations in 4x NuPage buffer + DTT (Thermo Fisher Scientific Inc., Rockford, IL, USA).  
16 After boiling at 95°C for 5 min, equal amounts of protein were loaded onto 4%-20% gradient  
17 Criterion™ TGX™ Precast Gels (Biorad, Hercules, CA, USA). Samples were transferred to a  
18 nitrocellulose membrane using the Trans-Blot® Turbo™ Transfer System (Biorad, Hercules,  
19 CA, USA). Membranes were blocked in Tris-buffered-saline with 0.05 % Tween 20 (TBS-T)  
20 containing 5% BSA (VWR, Vienna, Austria) for 1 h. For leptin detection, membranes were  
21 blocked in 5% skim milk powder (Sigma-Aldrich, St. Louis, Missouri, USA) in TBS-T. Primary  
22 antibodies were anti-pSTAT3<sup>T705</sup> (rabbit polyclonal, 1:1000, Cat #9145), anti-STAT3 (mouse  
23 monoclonal, 1:1000, Cat #9139), anti-β-Actin (rabbit polyclonal, 1:10000, Cat #4970) (all  
24 antibodies purchased from Cell Signaling Technology (Cell Signaling, Danvers, MA, USA)) or  
25 anti-murine-leptin (rabbit polyclonal, 1:1000, Cat #500-P68. Peprotech, Rocky Hill, NJ, USA).  
26 Antibodies were diluted in blocking buffer (5% skim milk powder for leptin antibodies, 5%

1 BSA for all others) and incubated on the membranes overnight at 4°C. Detection was achieved  
2 using ECL Clarity (Biorad, Hercules, California, USA) and exposure to high-sensitivity films  
3 (Amersham Hyperfilm ECL (GE Healthcare Bio-Sciences, Pittsburgh, PA, USA)).  
4 Densitometric analysis was performed using ImageJ 1.51 (NIH, Bethesda, Maryland, USA).

5

6

## 7 **Cell Culture**

8 HEK293 cells were cultured in a 6-well plate with low glucose DMEM, with 10% FBS and 1%  
9 Pen/Strep. Transfection of pCAG-2A-H2B Venus\_mOBRb-HA was carried out using the  
10 FuGene® HD transfection reagent (Promega, Madison, WI, USA) as per the kit's instructions  
11 with 1.5 µg of mLepRb plasmid DNA and 4.5 µl of transfection reagent. 48 h post transfection,  
12 cells were placed in starvation medium (DMEM, with 0.1% FBS) for 4 h prior to leptin  
13 stimulation. Recombinant murine leptin was added to the cells at a final concentration of 10 nM.  
14 Cells were stimulated for 30 min with vehicle, leptin, CW-800 dye or leptin-CW800, washed  
15 twice with ice cold PBS and then snap frozen at -80°C. Cellular proteins were isolated by  
16 adding 100 µl RIPA buffer with inhibitors and PMSF, and further treated as described above.

17

## 18 **RNA extraction and qPCR**

19 RNA was extracted from tissue using the NucleoSpin RNA isolation kit (Macherey-Nagel,  
20 Düren, Germany). Equal amounts of RNA were reverse transcribed to cDNA using the  
21 QuantiTect Reverse Transcription kit (Qiagen, Hilden, Germany). Gene expression was  
22 analyzed using TaqMan probes for LRP2 (Mm01328171\_m1), murine leptin receptor  
23 (Mm00440181\_m1), and Hprt (Mm01545399\_m1) as the housekeeping gene with the  
24 respective TaqMan mastermix (Thermo Fischer Scientific, Inc., Rockford, IL USA). qPCRs  
25 were carried out using a ViiA™ 7 Real Time PCR System (Applied Biosystems). Gene  
26 expression was evaluated using the  $\Delta\Delta$  Ct method.

1

## 2 **Tissue clearing and Light-Sheet Fluorescence Microscopy**

3 The dissected brain was fixed in PaxGene (PreAnalytiX, Hombrechtikon, Switzerland)  
4 according to the manufacturer's recommendations and thereafter underwent a chemical  
5 procedure of optical clearing as described before (23). Afterwards cleared whole mouse brains  
6 were imaged on a light-sheet fluorescence microscope (UltraMicroscope II, LaVision BioTec,  
7 Bielefeld, Germany). In order to visualize the lectin-647 (Thermo Fisher Scientific Inc.,  
8 Rockford, IL, USA, Cat# L32451) a bandpass filter set with an excitation range of 640/30 and  
9 emission range of 690/50 was used in combination with an additional filter set (excitation:  
10 740/35; emission: 795/50) for detection of leptin-CW800 signals. 3D-reconstruction and  
11 rendering was performed using Imaris vers.7.3 (Bitplane, Concord, MA, USA). Volume  
12 analysis was performed using Arivis Vision4D (Arivis, Munich, Germany).

13

## 14 **Immunohistochemistry**

15 Brains were extracted after cervical dislocation and incubated in 4% paraformaldehyde at 4°C  
16 overnight. Brains were then transferred to 20% sucrose in 0.1 M tris-buffered-saline (TBS) for  
17 24-48 h. Brains were frozen at -20°C, mounted with OCT and cut coronally on a cryostat into 30  
18 µm sections. Free-floating sections were subjected to pre-treatment with ice-cold 100%  
19 methanol for 10 min at -20°C, then to blocking for 1 h at RT in a buffer containing 0.25%  
20 gelatin and 0.5% Triton X 100 in 1x TBS. Primary anti-pSTAT3<sup>T705</sup> antibody was incubated  
21 with brain sections overnight at 4°C. After 3 x 5 min washing steps with TBS, the secondary  
22 donkey anti-rabbit-568 antibody (1:500 in blocking buffer, Thermofischer Scientific, Cat #  
23 A10042) was incubated with brain slices for 1 h at RT. After washing, the sections were  
24 counterstained with DAPI (1:10000) and mounted on slides. Images were captured with a Leica  
25 TCS SP5 microscope. Stack and overlay pictures were created using ImageJ image analysis



1 software (v. 1.51, NIH, Bethesda, Maryland, USA). Brain regions were defined with the use of  
2 the DAPI counterstaining and the Allen brain Atlas (<http://mouse.brain-map.org/static/atlas>).

#### 4 **Statistical Analyses**

5 Statistical analyses were performed using GraphPad Prism (GraphPad Software, Inc. La Jolla,  
6 CA, USA). Two-tailed Student's t-tests or One-Way ANOVA with Bonferroni's post tests were  
7 used to compare differences between phenotypes. P-values lower than 0.05 were considered  
8 significant. Significances were indicated as follow: \*\*p < 0.01, \*\*\*p < 0.001, \*\*\*\*p < 0.0001  
9 or, groups with significantly different values were indicated as different characters and groups  
10 not significantly different from each other were indicated with the same characters. All results  
11 are presented as means +/- SEM. Gaussian distribution was analyzed with the D'Agostino-  
12 Pearson omnibus test.

#### 17 **Results**

##### 18 **Fluorescently labeled leptin allows for visualization of leptin distribution in the whole** 19 **mouse brain**

20 To visualize how exogenous leptin distributes in the brain after injection (i.p., 5 mg·kg<sup>-1</sup>), we  
21 coupled an infrared fluorescent dye (CW800) or a far-red fluorescent dye (650) to recombinant  
22 murine leptin (Figure 1A). The product leptin-CW800 was subsequently subjected to anion  
23 exchange chromatography (Figure 1B), and the resulting fractions 1 to 4, washout fraction 5 as  
24 well as the naïve unlabeled educt leptin and the labelled product leptin-CW800 were assessed by  
25 SDS page and Western Blotting (Fig 1C). Immunolabeling with an antibody against leptin, and  
26 the simultaneous direct detection of infrared CW-800 fluorescence revealed a full conversion of

1 unlabeled leptin to leptin-CW800, i.e. the absence of unlabeled leptin in the reaction product  
2 (Figure 1C-i). Moreover, fractions 2 to 4 contained leptin-CW800 bands that appeared to be  
3 larger in size (ca. 17-20 kDa) compared to naïve unlabeled leptin at 16 kDa. Notably, the  
4 antibody against leptin had a profoundly reduced affinity against leptin-CW800 (Figure 1C-i),  
5 and leptin-CW800 could only be visualized when the signal intensity was strongly enhanced  
6 (Suppl. Fig 1A).

7 Next, to test if labeled leptin-CW800 was still bioactive, we overexpressed the long, signal  
8 transducing form of the murine leptin receptor (mLepRb) in HEK293 cells and stimulated these  
9 cells with either native leptin, leptin-CW800, the isolated fractions, vehicle (PBS) or CW800-  
10 dye alone. Labeled leptin-CW800 was capable of activating LepRb downstream signaling to the  
11 same extent as native leptin, indicated by comparable phosphorylation of signal transducer and  
12 activator of transcription 3 (STAT3, pSTAT3) (Figure 1Cii & 1D). Fractions 2 to 4 displayed  
13 significant leptin bioactivity as well, but proteolytic cleavage with the occurrence of a 10kDa  
14 leptin fragment during anion exchange chromatography slightly diminished their bioactivity  
15 compared to native or labelled leptin-CW800. Accordingly, to confirm the bioactivity of labeled  
16 leptin *in vivo*, we injected 5 mg·kg<sup>-1</sup> of unfractionated leptin-650 into chow fed control mice and  
17 confirmed an increased staining for pSTAT3 nuclei in the hypothalamus compared to injection  
18 of the 650 dye alone (Figure 1E). Having established that labeled leptin is functional *in vitro* and  
19 *in vivo*, we next injected unfractionated leptin-CW800 (i.p., 5 mg·kg<sup>-1</sup>, 45 min prior to sacrifice)  
20 into mice fed either chow or a high fat diet (HFD). We also injected fluorescent lectin-647 (i.v.,  
21 250 µg, 5 – 10 min prior to sacrifice), which marks blood vessels by binding glycoproteins on  
22 the vascular endothelial layer (24).

23 Tissue clearing and light-sheet fluorescence microscopy (LSFM) (Figure 1A) allowed us to  
24 visualize precisely where exogenous leptin-CW800 accumulates in the brain (Figure 1F).  
25 Leptin-CW800 that has entered the brain parenchyma is clearly distinct from leptin that is in  
26 circulation, which co-localizes with lectin in the blood vessels (yellow/orange signal) (Figure 1F

1 & 2A). 3D rendering of LSFM images allowed for further appreciation of the leptin-CW800  
2 distribution in the brain. Using 3D visualization we could demonstrate, based on signal strength  
3 and overall size, that the majority of leptin-CW800 is seen in the lateral CP (suppl. material  
4 video SV1, SV2 and SV5). Leptin-CW800 is predominantly found in the circumventricular  
5 organs such as the ME or the CP in the lateral ventricle (Figure 2A). In 3D rendered LSFM  
6 images (Suppl. material video SV2), other circumventricular organs such as the CP in the 4<sup>th</sup>  
7 ventricle also showed high leptin-CW800 signal. In contrast, the arcuate nucleus (ARC) appears  
8 to be protected from circulating molecules that leak into the ME, evidenced by the restricted  
9 signal of leptin-CW800 within the ME and a lack of penetration into the ARC 45 min post leptin  
10 i.p. injection (Figure 2A-i & ii). In the lateral ventricle CP the leptin signal was not only present  
11 in the blood vessels, but also outside the capillaries within the CP ependymal cell layer (Figure  
12 2A-ii, iv & suppl. material video SV5). When compared to other microvessels of the brain,  
13 leptin-CW800 signal is found only colocalized within lectin-647 (suppl. material video SV5).  
14 Interestingly, when comparing leptin-CW800 accumulation in chow and DIO mice, there  
15 appears to be no difference in signal intensities across all areas positive for leptin-CW800. DIO  
16 mice display no differences in leptin accumulation in the ME or CP ependymal layers (Fig. 1F,  
17 Fig. 2A, suppl. material video SV1, SV3 and SV4). This was quantified using volumetric  
18 calculations based on signal intensity for the ME (Figure 2B) and showed no difference between  
19 lean chow fed and HFD fed DIO mice (Figure 2C).

20 Due to resolution limitations of the LSFM setup, it was not possible to distinguish whether or  
21 not the leptin-CW800 signal was in the CP interstitium, or had been taken up by the ependymal  
22 cells themselves. The latter would indicate a specific uptake, due to the fact that the ependymal  
23 cells are connected by tight-junctions and thus form the blood-CSF barrier in the CP. To  
24 overcome this we injected mice with leptin-650 (i.p., 5 mg·kg<sup>-1</sup>) and lectin-488 (i.v., 250 µg),  
25 thereby enabling visualization by confocal microscopy (Figure 2D). Here, we see that leptin-650  
26 (Figure 2D-i) but not dye alone (Figure 2D-ii) is found to accumulate along the border of the

1 ME to the third ventricle and within the subfornical organ (SFO) (Figure 2D-iii, iv), which is  
2 another circumventricular organ that lacks an intact BBB. Furthermore, leptin-650 appears to be  
3 specifically taken up within the ependymal cells of the CP (Figure 2D-v - arrows), when  
4 compared to the dye injected alone (Figure 2D-vi).

5

6 **Leptin downstream signaling in the MBH peaks 45 minutes after exogenous leptin**  
7 **administration.**

8 Due to the conflicting nature of the literature regarding leptin transport and uptake in obese  
9 animals (12, 17, 25, 26), we aimed to confirm our findings using an additional, more  
10 quantitative method. A recent study by Balland and colleagues describes a dissection method to  
11 separate the ME from the MBH, thus excluding circulating signals and allowing the  
12 measurement of proteins found only within the MBH and not within the ME (17). By adapting  
13 this method we were able to isolate the ME and MBH (Figure 3A) from freshly extracted brains.  
14 We confirmed the accuracy and purity of the dissection by analyzing mRNA levels of two ME  
15 residing tanycyte genes using qPCR (Figure 3B). Both tanycyte genes fibroblast growth factor  
16 10 (FGF10) and dopamine- and cAMP-regulated phosphoprotein (Darpp32) were highly  
17 enriched in ME tissue samples and only minimally expressed in MBH samples (Figure 3B).  
18 Having established MBH dissection, we wished to define the time point at which leptin activity  
19 is at its peak within the MBH. We measured pSTAT3 in ME & MBH samples 5, 15, 30, 45 and  
20 75 min after leptin injection (i.p., 5 mg·kg<sup>-1</sup>) in chow fed mice (Figure 3C). In ME samples there  
21 was no change in pSTAT3 levels (Figure 3D). However, we found a time dependent increase in  
22 pSTAT3 levels in the MBH, which peaked 45 min after leptin injection and began to decrease  
23 thereafter (Figure 3E). For future experiments, we selected the 45 min time point to allow  
24 maximum leptin transport into the MBH.

25

1 **Profound weight loss induces upregulation of LepR in the CP and increased leptin**  
2 **accumulation in the MBH.**

3 To gain further insight into how leptin resistance may affect leptin transport, we designed a diet  
4 intervention study. Control mice fed chow or HFD maintained their bodyweight throughout the  
5 study period and the HFD group was significantly heavier (Figure 4A,B). Additional groups of  
6 HFD-fed mice lost weight due to a simple diet switch to chow (HFD>Chow), due to a switch to  
7 chow with calorie restriction (CR), or due to a switch to chow plus daily treatment with leptin  
8 re-sensitizing glucagon-like peptide 1 (Glp1) agonist exendin-4 (EX4) (22). The HFD>Chow  
9 group lost 9% BW over the 11 day study period (Figure 4A), similar to that seen by others (27).  
10 Both weight loss intervention groups CR and EX4 lost significant amounts of body weight  
11 (Figure 4B), totaling 26% and 32% respectively (Figure 4A). The majority of lost weight  
12 derived from a decrease in fat mass (Figure 4C), accompanied by significant losses in lean mass  
13 (Figure 4D).

14 Two possible transporters responsible for the movement of leptin from the CP to the CSF are  
15 low density lipoprotein-related protein 2 (LRP2) (28) or the short form of the leptin receptor  
16 (LepRa) (18, 19). We extracted the CP from mice in the diet intervention study and examined  
17 mRNA levels of LRP2 and LepR (Figure 4E-F). LRP2 expression levels were much lower when  
18 compared to LepR levels (average CP values of 33 for LRP2 vs. 25 for LepR) and unchanged  
19 between groups (Figure 4E). No changes in LepR expression were seen between chow and HFD  
20 groups. Interestingly, LepR was significantly upregulated in both weight loss groups CR and  
21 EX4, compared to all groups that did not undergo profound weight loss (Figure 4F).

22 We next aimed to assess the impact of weight loss and increased CP LepR expression on the  
23 levels of leptin as well as leptin signaling marker pSTAT3 in microdissected MBH tissue  
24 (Figure 5A-D). Western blotting revealed no differences in pSTAT3 or leptin levels in the MBH  
25 between chow and HFD animals (Figure 5A,D), which corroborates the lack of difference

1 observed in our LSFM analyses. Leptin caused a 7 fold increase in pSTAT3 levels, which was  
2 significantly reduced in all other diet groups (Figure 5D). Intriguingly though, we see elevated  
3 leptin levels in the MBH of both weight loss intervention groups CR and EX4, when compared  
4 to the other 3 groups (Figure 5A,B), which correlates with the increased LepR expression seen  
5 in the CP of these animals (Figure 4F).

6

7

## 8 **Discussion**

9 We describe here a novel method of visualizing the transport of leptin across the BBB in mice.  
10 By using fluorescently labeled leptin in combination with tissue clearing and light-sheet  
11 fluorescence microscopy, we display highest leptin accumulation in the choroid plexus of the  
12 ventricular system followed by circumventricular organs such as the ME or SFO. Notably, we  
13 found no differences in leptin accumulation between lean and obese mice in the ME, MBH or  
14 CP. Comparable leptin protein levels in microdissected ME and MBH tissues of lean and obese  
15 mice, quantified via western blotting, corroborated the results of our microscopy analyses.  
16 Overall, we found that DIO does not prevent the accumulation of leptin in brain areas important  
17 for metabolic control. Moreover, we revealed that weight loss intervention, triggered either by  
18 calorie restriction or pharmacological treatment with exendin-4, led to an increase in leptin  
19 receptor expression in the CP as well as elevated leptin protein levels in the MBH.

20 BBB transport of peptides has traditionally been assessed by radioactive tracer studies (12),  
21 which combine high sensitivity with excellent quantification capabilities. However, high costs  
22 and difficulties in creating the stable peptide tracer conjugates restrict their use to few  
23 laboratories specialized in such studies. Our novel method may be a useful tool to complement  
24 or even replace radioactive tracer studies. Foremost, our method does not require radiation and  
25 the predicaments associated with it. The kit-based chemistry reaction for the coupling of

1 available fluorescent dyes can be readily adapted to specific peptide hormones. Here, by using  
2 infrared fluorescent dyes, researchers can ensure that autofluorescence does not impede the  
3 imaging. Next, if labeling with the fluorescent dye is successful and the labeled peptide remains  
4 bioactive, modern imaging techniques can be applied to visualize the transport route of  
5 fluorescent peptides into the brain. Our *post mortem* imaging approaches were based on LSM  
6 as well as confocal microscopy to combine whole brain 3D imaging with subsequent high  
7 resolution imaging in brain slices. It also seems feasible to study the *in vivo* uptake of  
8 fluorescently labeled peptide into mouse tissues by using alternative biofluorescence imaging  
9 techniques. A similar approach, although *post mortem*, was recently applied to profile the whole  
10 body bio-distribution of a fluorescently labeled glucagon-T3 hybrid peptide in mice (29).

11 Our 3D imaging revealed leptin accumulation predominantly in the CP of the ventricular  
12 system, an ependymal secretory organ designed to transfer molecules from the blood to the CSF.  
13 The CP has been linked to leptin transport into the brain (5, 18, 21, 30), driven by the short form  
14 of the leptin receptor that is highly expressed in the CP (19, 31, 32). Recent work further  
15 revealed diminished delivery of leptin across the BBB and increased DIO when all forms of  
16 LepR were partially knocked down in BBB-specific endothelial cells of the CP and related areas  
17 of mice (18). A lack of leptin transport into the MBH was further reported for mice with a  
18 genetic mutation in the leptin receptor gene (*db/db*), compared to WT controls (17). This is  
19 however unexpected, as the *db/db* mutation affects only the signal transducing LepRb isoform.  
20 *Db/db* mice retain a fully functioning LepRa, and have indeed been reported to transport leptin  
21 across the BBB via a saturable mechanism (33).

22 These reports collectively suggest that LepRa expression in the CP is a critical regulator of BBB  
23 transport of leptin. Our data contribute to this concept by showing a clear association between  
24 elevated LepR levels in the CP and elevated leptin protein levels in the MBH of mice subjected  
25 to profound weight loss via CR or EX4. Notably, we observe very low CP expression levels of  
26 Lrp2, a transport protein previously linked with leptin BBB transport in CP epithelium (28).

1 Overall, our results support a model whereby leptin bio-distribution in the brain is  
2 predominantly facilitated by the CP and LepR-driven transfer from blood into the CSF.

3 The degree and more importantly the type of vasculature present in a particular brain region will  
4 play a pivotal part in which blood borne substances are given access to the parenchyma. It has  
5 been previously shown that the vasculature of the MBH undergoes vascular remodeling during  
6 obesity, which directly influences the accessibility to circulating substances (34, 35). Langlet  
7 and colleagues further showed that during fasting, mice undergo vascular remodeling within the  
8 ARC (36). These changes include an invasion of fenestrated vessels from the ME into the ARC,  
9 allowing for an increase in peripheral hormone visibility to the arcuate neurons (36). Thus in a  
10 fasting state, which is exhibited in our CR and EX4 models, it is possible that higher levels of  
11 circulating leptin could gain access to the ARC, which may additionally contribute to the  
12 increased transport by the CP, which we describe here.

13 Several recent studies suggest a prominent role of the median eminence and tanycytes in  
14 mediating leptin transport to the MBH (17, 36). Tanycytes are specialized ependymal cells that  
15 form the blood-CSF barrier in circumventricular organs (37). To avoid free access of blood  
16 borne molecules to the rest of the MBH, tanycytes form a border via tight junctions between  
17 their processes (38), and wall off the ME from MBH (39). Modulation of tanycytic tight  
18 junctions in the ME was shown to increase leptin transport into the MBH (17). Moreover,  
19 although leptin receptor expression has never been directly shown (largely due to a lacking  
20 suitable antibody), leptin receptor mRNA is expressed in tanycytes. Furthermore, isolated  
21 tanycytes display phosphorylation of STAT3 upon leptin stimulation, indicating the expression  
22 of the leptin receptor. These tanycytes appear to mediate leptin transcytosis to the CSF and  
23 from there to the arcuate nucleus (17). Our LSFM revealed comparable leptin-CW800  
24 accumulation in the ME of lean and DIO mice. Confocal microscopy further revealed that  
25 CW650-leptin levels are accumulating in the cytosol of  $\beta$ 2 tanycytes, and here predominantly at  
26 the ventricular side. Accordingly, our imaging data are in line with these earlier reports.



1 However, future studies are warranted to fully delineate the relative contributions of the ME and  
2 the CP in mediating BBB transport of leptin to the MBH and other LepR-positive brain areas.

3 In our study, we see no differences in the accumulation of leptin in the ME or MBH between  
4 lean and DIO mice. These data are discrepant to a previous report that, using essentially the  
5 same western blotting methodology, found severely impaired transport of leptin into the MBH  
6 of DIO mice compared to lean controls. Nevertheless, both our and the previous study (17)  
7 report increased pSTAT3 in the MBH after leptin injection, which suggests sufficient leptin  
8 transport to elicit leptin signaling. Leptin resistance, it would appear then, is unlikely to be the  
9 result of blunted leptin transport into the MBH. Consistent with that notion, we observed  
10 elevated basal pSTAT3 levels in the MBH of vehicle-treated DIO mice, indicating chronically  
11 activated leptin signaling due to high endogenous leptin levels. This resonates with a recent  
12 study by Ottaway and colleagues who, by using leptin receptor antagonist administration,  
13 demonstrated that endogenous leptin is still functional in DIO mice (25). Earlier studies further  
14 reported a complete lack of physiological responses such as weight loss or food intake in DIO  
15 mice subjected to intracerebroventricular injections of exogenous leptin, but a low-level  
16 preservation of leptin-induced hypothalamic Stat3 activation (13). Overall, these data highlight  
17 the possibility of a non-transport related leptin resistance.

18 How can we reconcile the apparent discrepancies between our results and previous reports,  
19 mostly based on radioactive tracer studies, which suggest diminished leptin BBB transport in a  
20 state of obesity (12, 17)? These earlier studies largely focused on assessing the steady-state  
21 kinetics of leptin BBB transport, i.e. the rate of transfer in relation to the concentrations of  
22 circulating tracer. Our measurements were made at a fixed point in time when leptin  
23 accumulation reached a maximum in the MBH. Accordingly, we did not evaluate the ratio of  
24 leptin entering the brain in relation to the levels in circulation. Our data are nonetheless in  
25 agreement with a very recent report on unchanged leptin BBB transport kinetics in mice fed

1 chow or two weeks of HFD, which was built upon a novel micro-perfusion technique and the  
2 measurement of MBH leptin over a timeframe of 6 hours (40).

3 We acknowledge, as discussed above, that leptin transport appears to be driven by leptin  
4 receptor in a saturable manner. Indeed, LepRa expression levels may be the limiting factor for  
5 leptin BBB transport rates when endogenous leptin levels are high, or supraphysiological levels  
6 of recombinant leptin are administered. However, as shown by our study and outlined in Fig.  
7 5D, even a putative threshold defined by delimited LepRa expression in the CP and impaired  
8 leptin BBB transfer kinetics cannot prevent the entry of significant levels of leptin into the CSF  
9 and LepR-expressing brain areas such as the MBH.

10 Here, we demonstrate a novel visualization of leptin distribution in the whole intact mouse  
11 brain. The methods described can be readily adapted to accommodate a plethora of other peptide  
12 hormones, which may greatly impact the field of hormonal BBB transport. Taken together, we  
13 show that despite being leptin resistant, DIO mice retain a functional leptin transport system and  
14 display no deficit in leptin accumulation in the MBH or circumventricular organs. Our findings  
15 are further solidified by a recent hypothalamic perfusion study, which revealed no changes in  
16 leptin transport kinetics (40). Moreover, emerging evidence suggests persistence of leptin  
17 signaling also in DIO mice and obese humans (25, 41). Lastly, AgRP and POMC neurons in the  
18 MBH are also projecting LepR-expressing somato-denritic processes into the ME, where  
19 circulating leptin can induce neuronal leptin signaling without the need of crossing the BBB (42,  
20 43). Accordingly, in light of recent and our own findings, little evidence points towards  
21 impaired leptin BBB transfer as underlying cause for leptin resistance. Future research efforts  
22 should thus perhaps be shifted away from leptin transport across the BBB and focused on other  
23 possible causes of leptin resistance, which, if corrected has the potential to have a large impact  
24 on the treatment of obesity.

25

26

1 **Author Contributions**

2 LH, SCS, PB, KP, and PTP performed *in vivo* experiments in mice. LH conducted  
3 immunohistochemical stainings. LH performed qPCRs and Western Blot analyzes. LH  
4 performed in vitro experiments in HEK293 cells. LH, AF and AW performed LSM and tissue  
5 clearing experiments. LH, EK and ACM designed and performed the anion exchange  
6 chromatography. LH, SCS, AF and PTP designed experiments, analyzed and interpreted the  
7 results. LH, SCS, AF, AW, MHT and PTP prepared the manuscript. SCS, LH, MHT and PTP  
8 developed the conceptual framework of this study.

9

10 **Acknowledgements**

11 We thank Emily V. Baumgart, Marlene Kilian, Ulrike Buchholz and Claudia-Mareike Pflüger  
12 for their skillful technical assistance. The plasmid 426-pCI-HA-mOBRb providing the insert for  
13 the plasmid pCAG-2A-H2B Venus\_mOBRb-HA was a kind gift from Julie Dam and Ralf  
14 Jockers, Institut Cochin, Paris. This work was supported in part by the German Center for  
15 Diabetes Research (DZD) (PTP, SCS, LH), by the Deutsche Forschungsgemeinschaft (DFG)  
16 within the CRC/Transregio 205/1 “The Adrenal: Central Relay in Health and Disease” (AW), by  
17 the Alexander von Humboldt Foundation (MHT), by an IMF Diabetes Portfolio Grant (ACM)  
18 by the Helmholtz Alliance ICEMED-Imaging and Curing Environmental Metabolic Diseases  
19 (SCS, MHT), by the Helmholtz-Israel-Cooperation in Personalized Medicine (PP), by the  
20 Helmholtz Initiative for Personalized Medicine (iMed; MHT), and through the Initiative and  
21 Networking Fund of the Helmholtz Association. Elements of artwork used in figure 1 and figure  
22 5 were provided by Servier medical art under the creative commons licence 3.0.

23

24 **Competing Interests**

25 Matthias H. Tschöp is a scientific advisor to Novo Nordisk and ERX.

## 1 **References**

- 2 1. Clemmensen C, Muller TD, Woods SC, Berthoud HR, Seeley RJ, Tschop MH. Gut-  
3 Brain Cross-Talk in Metabolic Control. *Cell*. 2017;168(5):758-74.
- 4 2. Obermeier B, Daneman R, Ransohoff RM. Development, maintenance and disruption of  
5 the blood-brain barrier. *Nat Med*. 2013;19(12):1584-96.
- 6 3. Garcia-Caceres C, Quarta C, Varela L, Gao Y, Gruber T, Legutko B, et al. Astrocytic  
7 Insulin Signaling Couples Brain Glucose Uptake with Nutrient Availability. *Cell*.  
8 2016;166(4):867-80.
- 9 4. Considine RV, Sinha MK, Heiman ML, Kriauciunas A, Stephens TW, Nyce MR, et  
10 al. Serum Immunoreactive-Leptin Concentrations in Normal-Weight and Obese Humans. *New*  
11 *England Journal of Medicine*. 1996;334(5):292-5.
- 12 5. Karonen S, Koistinen HA, Nikkinen P, VA. K. Is brain uptake of leptin in vivo saturable  
13 and reduced by fasting? *Eur J Nucl Med*. 1998;25:607-12.
- 14 6. Farooqi IS, Jebb SA, Langmack G, Lawrence E, Cheetham CH, Prentice AM, et al.  
15 Effects of Recombinant Leptin Therapy in a Child with Congenital Leptin Deficiency. *New*  
16 *England Journal of Medicine*. 1999;341(12):879-84.
- 17 7. Woods SC, Schwartz MW, Baskin DG, Seeley RJ. Food Intake and the Regulation of  
18 Body Weight. *Annual Review of Psychology*. 2000;51(1):255-77.
- 19 8. Bjørnbæk C, Elmquist JK, Frantz JD, Shoelson SE, Flier JS. Identification of SOCS-3 as a  
20 Potential Mediator. *Molecular Cell*. 1998;1:619–25.
- 21 9. Chen K, Li F, Li J, Cai H, Strom S, Bisello A, et al. Induction of leptin resistance  
22 through direct interaction of C-reactive protein with leptin. *Nat Med*. 2006;12(4):425-32.
- 23 10. Kabra DG, Pfuhlmann K, Garcia-Caceres C, Schriever SC, Casquero Garcia V, Kebede  
24 AF, et al. Hypothalamic leptin action is mediated by histone deacetylase 5. *Nat Commun*.  
25 2016;7:10782.

- 1 11. Banks WA, Alan B. Coon, Ryota Nakaoka, Sandra M. Robinson, Morley aJE.  
2 Triglycerides Induce Leptin Resistance at the Blood-Brain Barrier. *Diabetes*. 2004;53:1253-60.
- 3 12. Banks WAD, Christopher R. Farrell, Catherine L. Impaired transport of leptin across the  
4 blood-brain barrier in obesity. *Peptides*. 1999;20:1341-5.
- 5 13. El-Haschimi K, Pierroz D, Hileman SM, Bjørnbæk C, Flier JS. Two defects contribute to  
6 hypothalamic leptin resistance in mice with diet-induced obesity. *J Clin Invest*.  
7 2000;105(12):1827-32.
- 8 14. Rodriguez EM, Blazquez JL, Guerra M. The design of barriers in the hypothalamus  
9 allows the median eminence and the arcuate nucleus to enjoy private milieus: the former opens  
10 to the portal blood and the latter to the cerebrospinal fluid. *Peptides*. 2010;31(4):757-76.
- 11 15. Knigge KM, Scott DE. Structure and function of the median eminence. *American*  
12 *Journal of Anatomy*. 1970;129(2):223-43.
- 13 16. Clarke IJ. Hypothalamus as an Endocrine Organ. *Comprehensive Physiology*: John  
14 Wiley & Sons, Inc.; 2011.
- 15 17. Balland E, Dam, J., Langlet, F., Caron, E., Steculorum, S., Messina A, Rasika S, Falluel-  
16 Morel A, Anouar Y, Dehouck B, et al. Hypothalamic tanycytes are an ERK-gated conduit for  
17 leptin into the brain. *Cell Metab*. 2014;19(2):293-301.
- 18 18. Di Spiezio A, Sandin ES, Dore R, Muller-Fielitz H, Storck SE, Bernau M, et al. The  
19 LepR-mediated leptin transport across brain barriers controls food reward. *Mol Metab*. 2017.
- 20 19. Bjørnbæk C, Elmquist JK, Michl P, Ahima RS, Van Bueren A, Mccall AL, et al.  
21 Expression of Leptin Receptor Isoforms in Rat Brain Microvessels. *Endocrinology*.  
22 1998;139(8):3485-91.
- 23 20. Whish S, Dziegielewska KM, Mollgard K, Noor NM, Liddel SA, Habgood MD, et al.  
24 The inner CSF-brain barrier: developmentally controlled access to the brain via intercellular  
25 junctions. *Front Neurosci*. 2015;9:16.

- 1 21. Berislav VZ, Jovanovic S, Miao W, Samara S, Verma S, Farrell CL. Differential  
2 regulation of leptin transport by the choroid plexus and blood-brain barrier and high affinity  
3 transport systems for entry into hypothalamus and across the blood-cerebrospinal fluid barrier.  
4 *Endocrinology*. 2000;141(4):1434-41.
- 5 22. Müller TD, Sullivan LM, Habegger K, Yi CX, Kabra D, Grant E, et al. Restoration of  
6 leptin responsiveness in diet-induced obese mice using an optimized leptin analog in  
7 combination with exendin-4 or FGF21. *J Pept Sci*. 2012;18(6):383-93.
- 8 23. Erturk A, Becker K, Jahrling N, Mauch CP, Hojer CD, Egen JG, et al. Three-  
9 dimensional imaging of solvent-cleared organs using 3DISCO. *Nat Protoc*. 2012;7(11):1983-95.
- 10 24. Robertson RT, Levine ST, Haynes SM, Gutierrez P, Baratta JL, Tan Z, et al. Use of  
11 labeled tomato lectin for imaging vasculature structures. *Histochem Cell Biol*. 2015;143(2):225-  
12 34.
- 13 25. Ottaway N, Mahbod P, Rivero B, Norman LA, Gertler A, D'Alessio DA, et al. Diet-  
14 induced obese mice retain endogenous leptin action. *Cell Metab*. 2015;21(6):877-82.
- 15 26. Rijnsburger M, Unmehopa UA, Eggels L, Serlie MJ, la Fleur SE. One-week exposure to  
16 a free-choice high-fat high-sugar diet does not disrupt blood-brain barrier permeability in fed or  
17 overnight fasted rats. *Nutr Neurosci*. 2017:1-10.
- 18 27. Fischer IP, Irmeler M, Meyer CW, Sachs SJ, Neff F, Hrabe de Angelis M, et al. A history  
19 of obesity leaves an inflammatory fingerprint in liver and adipose tissue. *Int J Obes (Lond)*.  
20 2017.
- 21 28. Dietrich MO, Spuch C, Antequera D, Rodal I, de Yebenes JG, Molina JA, et al. Megalin  
22 mediates the transport of leptin across the blood-CSF barrier. *Neurobiol Aging*. 2008;29(6):902-  
23 12.
- 24 29. Finan B, Clemmensen C, Zhu Z, Stemmer K, Gauthier K, Muller L, et al. Chemical  
25 Hybridization of Glucagon and Thyroid Hormone Optimizes Therapeutic Impact for Metabolic  
26 Disease. *Cell*. 2016;167(3):843-57 e14.

- 1 30. Peiser C, McGregor GP, Lang RE. Binding and internalization of leptin by porcine  
2 choroid plexus cells. *Neuroscience Letters*. 2000;283:209-12.
- 3 31. Devos R, Richardst G, Campfieldt I, Tartaglia L, Guisez Y, Van der heyden J, et al. OB  
4 protein binds specifically to the choroid plexus of mice and rats. *Proc Natl Acad Sci*.  
5 1996;93:5668-73.
- 6 32. Tartaglia L, Dembski M, Weng X, Deng N, Culpepper J, Devos R, et al. Identification  
7 and expression cloning of a leptin receptor, OB-R. *Cell*. 1995;83:1263-71.
- 8 33. Maness LM, Banks. WA, Kastin. AJ. Persistence of blood-to-brain transport of leptin in  
9 obese leptin-deficient and leptin receptor-deficient mice. *Brain Research*. 2000;873:165-7.
- 10 34. Kalin S, Heppner FL, Bechmann I, Prinz M, Tschop MH, Yi CX. Hypothalamic innate  
11 immune reaction in obesity. *Nat Rev Endocrinol*. 2015;11(6):339-51.
- 12 35. Yi CX, Gericke M, Kruger M, Alkemade A, Kabra DG, Hanske S, et al. High calorie  
13 diet triggers hypothalamic angiopathy. *Mol Metab*. 2012;1(1-2):95-100.
- 14 36. Langlet F, Levin BE, Luquet S, Mazzone M, Messina A, Dunn-Meynell AA, et al.  
15 Tancytic VEGF-A boosts blood-hypothalamus barrier plasticity and access of metabolic  
16 signals to the arcuate nucleus in response to fasting. *Cell Metab*. 2013;17(4):607-17.
- 17 37. Langlet F, Mullier A, Bouret SG, Prevot V, Dehouck B. Tancyte-like cells form a  
18 blood-cerebrospinal fluid barrier in the circumventricular organs of the mouse brain. *J Comp*  
19 *Neurol*. 2013;521(15):3389-405.
- 20 38. Peruzzo B, Pastor FE, Blázquez JL, Schöbitz K, Peláez B, Amat P, et al. A second look  
21 at the barriers of the medial basal hypothalamus. *Experimental Brain Research*. 2000;132(1):10-  
22 26.
- 23 39. Petrov T, Howarth A, Krukoff T, Stevenson B. Distribution of the tight junction-  
24 associated protein ZO-1 in circumventricular organs of the CNS. *Molecular Brain Research*.  
25 1994;21:235-46.

- 1 40. Kleinert M, Kotzbeck P, Altendorfer-Kroath T, Birngruber T, Tschop MH, Clemmensen  
2 C. Time-resolved hypothalamic open flow micro-perfusion reveals normal leptin transport  
3 across the blood-brain barrier in leptin resistant mice. *Mol Metab.* 2018;13:77-82.
- 4 41. Pan WW, Myers MG, Jr. Leptin and the maintenance of elevated body weight. *Nat Rev*  
5 *Neurosci.* 2018;19(2):95-105.
- 6 42. Djogo T, Robins SC, Schneider S, Kryzskaya D, Liu X, Mingay A, et al. Adult NG2-  
7 Glia Are Required for Median Eminence-Mediated Leptin Sensing and Body Weight Control.  
8 *Cell Metab.* 2016;23(5):797-810.
- 9 43. Ha S, Baver S, Huo L, Gata A, Hairston J, Huntoon N, et al. Somato-dendritic  
10 localization and signaling by leptin receptors in hypothalamic POMC and AgRP neurons. *PLoS*  
11 *One.* 2013;8(10):e77622.

12

13

14

15

16

17

18

19

20

21

22

23

24

25

26



1 **Figure legends**

2 **Figure 1 | Labeled leptin combined with tissue clearing and light-sheet fluorescence**  
3 **microscopy allows for 3D visualization of leptin distribution in the intact mouse brain.**

4 **(A)** Leptin was coupled to either an infrared fluorescent dye (CW800) or a far-red fluorescent  
5 dye (650). Labeled leptin was then injected into chow-fed lean mice or age-matched diet-  
6 induced obese (DIO) mice fed with HFD for 20 weeks. Brains were collected 45min after leptin  
7 injections and subjected to tissue clearing followed by LSM to obtain 3D whole brain images.

8 **(B)** Anion exchange chromatography was used to purify CW800 labeled leptin. Individual  
9 fractions F1 to F4 were collected based on UV absorption (280 nm). A final fraction (F5) was  
10 collected by increasing the NaCl concentration above 50%, which is known to remove any  
11 remaining bound substances from the column.

12 **(C-i)** Leptin, leptin-CW800, fractions F1 to F4, PBS and CW800 alone were subjected to SDS-  
13 Page and Western blotting. Leptin bands were detected by either immunolabeling with a leptin  
14 antibody (red) or infrared fluorescence (green). **(C-ii)** Murine LepRb overexpressing HEK293  
15 cells were incubated for 30 min with native leptin, leptin-CW800, fractions F1 to F4, CW800  
16 alone, or PBS to measure pSTAT3 levels as a marker for leptin bioactivity.

17 **(D)** Densitometric analysis of the pSTAT3 signal from the western blots seen in C-ii (n=3  
18 independent experiments).

19 **(E)** Bioactivity was further confirmed *in vivo* by injecting leptin-650 (i.p., 5 mg·kg<sup>-1</sup>) in mice  
20 and analyzing pSTAT3 45 min after leptin administration (pSTAT3 shown in red, leptin-650 or  
21 the 650 dye alone shown in green).

22 **(F)** Mice, either chow-fed and lean (i) or HFD-fed and DIO (ii), were injected with leptin-  
23 CW800 (i.p., 5 mg·kg<sup>-1</sup>) and lectin-647 (i.v., 250 µg). 3D-reconstruction of the brains reveals

1 leptin accumulation in the ME and CP (Lectin-647 shown in red, leptin-CW800 shown in  
2 green).

3 Scale bars for **E** & **F** are 100 and 1000  $\mu\text{m}$ , respectively. Data in **D** are means  $\pm$  SEM for 3  
4 independent experiments. Significance was determined using One-Way ANOVA and  
5 Bonferonni's post-hoc testing. Significance is depicted as: \* $p < 0.05$ , \*\* $p < 0.01$ , \*\*\*\* $p <$   
6  $0.0001$

7

8 **Figure 2 | Accumulation of labeled leptin in circumventricular organs and the choroid**  
9 **plexus of mice.**

10 **(A)** Leptin-CW800 (i.p.,  $5\text{mg}\cdot\text{kg}^{-1}$ ) and lectin-647 (i.v.,  $250\ \mu\text{g}$ ) were injected into either DIO or  
11 chow control mice, and the brains examined with LSM. (Leptin-CW800 shown in green,  
12 lectin-647 shown in red). Leptin-CW800 that has entered the brain parenchyma is seen as green,  
13 whereas leptin-CW800 within the blood vessels is visualized as yellow. **A-i** & **A-iii** depict the  
14 ME and **A-ii** & **A-iv** depict the CP in the lateral ventricle.

15 **(B)** Screenshot depicting the leptin volume (pink) and blood vessel volume (turquoise)  
16 calculations from the ARIVIS image analysis software package.

17 **(C)** Quantification of the total leptin volume within the ME for lean chow fed and DIO mice.

18 **(D)** To obtain higher resolution of specific regions, leptin-650 (i.p.,  $5\text{mg}\cdot\text{kg}^{-1}$ ) or 650-Dye and  
19 lectin-488 (i.v.,  $250\ \mu\text{g}$ ) were injected into chow fed mice and examined via confocal  
20 microscopy. Arrows indicate leptin-650 in the brain parenchyma, arrowheads indicate leptin-  
21 650 within blood vessels. ME: Median eminence, ARC: arcuate nucleus, SFO: subfornical  
22 organ, CP: choroid plexus (lateral ventricle).

1 Scale bars for **A-I & ii** are 100  $\mu\text{m}$ , and for **Di-vi** 100  $\mu\text{m}$ . Leptin-CW800/leptin-650 are shown  
2 in green, lectin-647/lectin488 are shown in red, DAPI is shown in blue. Data in C are means  $\pm$   
3 SEM for an n of 3. Significance was determined using a two-tailed student's t-test.

4

5 **Figure 3 | Leptin signaling in dissected median eminence (ME) and mediobasal**  
6 **hypothalamus (MBH) mouse brain tissue.**

7 **(A)** The ME and MBH were dissected from murine brains as depicted in panel A.

8 **(B)** A correct dissection was determined using RT-qPCR of specific ME-residing tanycyte genes  
9 (FGF10 and Darpp32).

10 **(C, D, E)** Leptin transport kinetics into the ME and MBH were assessed in mice injected with  
11 leptin (i.p.,  $5\text{mg}\cdot\text{kg}^{-1}$ ) or vehicle. ME and MBH tissue samples were dissected 5 to 75 min after  
12 leptin/vehicle treatment and subjected to western blot **(C)** and densitometric analyses **(D, E)**.

13 Data in **B, D** and **E** are means  $\pm$  SEM. Differences were analyzed by a two-tailed Student's t-  
14 test. **\*\*p** < 0.01, **\*\*\*p** < 0.001 between ME and MBH samples. (Each data point consists of  
15 samples from 2 animals, which were pooled due to detection limitations. n = 4 per group for **B**  
16 and n = 2 - 3 for **D-E**) ME: Median eminence, MBH: Mediobasal hypothalamus. The scale bar  
17 in **A** is 200  $\mu\text{m}$ .

18

19 **Figure 4 | Weight loss by CR or EX4 treatment drives upregulation of leptin receptor**  
20 **mRNA in the choroid plexus:**

21 **(A)** Effects of obesity and weight loss on the transport of leptin into the MBH were recorded in  
22 age-matched mice exposed to at least 20 weeks of chow or HFD (Chow, HFD) and additional  
23 groups of age-matched and HFD-fed DIO mice after a diet intervention (HFD>Chow; CR) or

1 pharmacological treatment (EX4). Body weights were recorded daily for all groups (chow and  
2 HFD every 3 days) for 11 days during the intervention.

3 **(B, C, D)** Final day body weights for all animals (B) as well as changes in fat and lean mass (**C-**  
4 **D**).

5 **(E, F)** On day 11, the choroid plexus was isolated from all mice and expression levels of LRP2  
6 and LepR were measured (**E-F**).

7 All data are means  $\pm$  SEM. Groups with the same character indicate groups that are not  
8 significantly different from each other. Groups with different characters are significantly  
9 different from each other as determined by One-Way or Two-Way ANOVA with Tukey's  
10 post-hoc testing (n = 11-13 for **A-D** and n = 9-10 for **E-F**. HFD: high fat diet, H>C: diet switch,  
11 CR: calorie restriction, EX4: exendin-4).

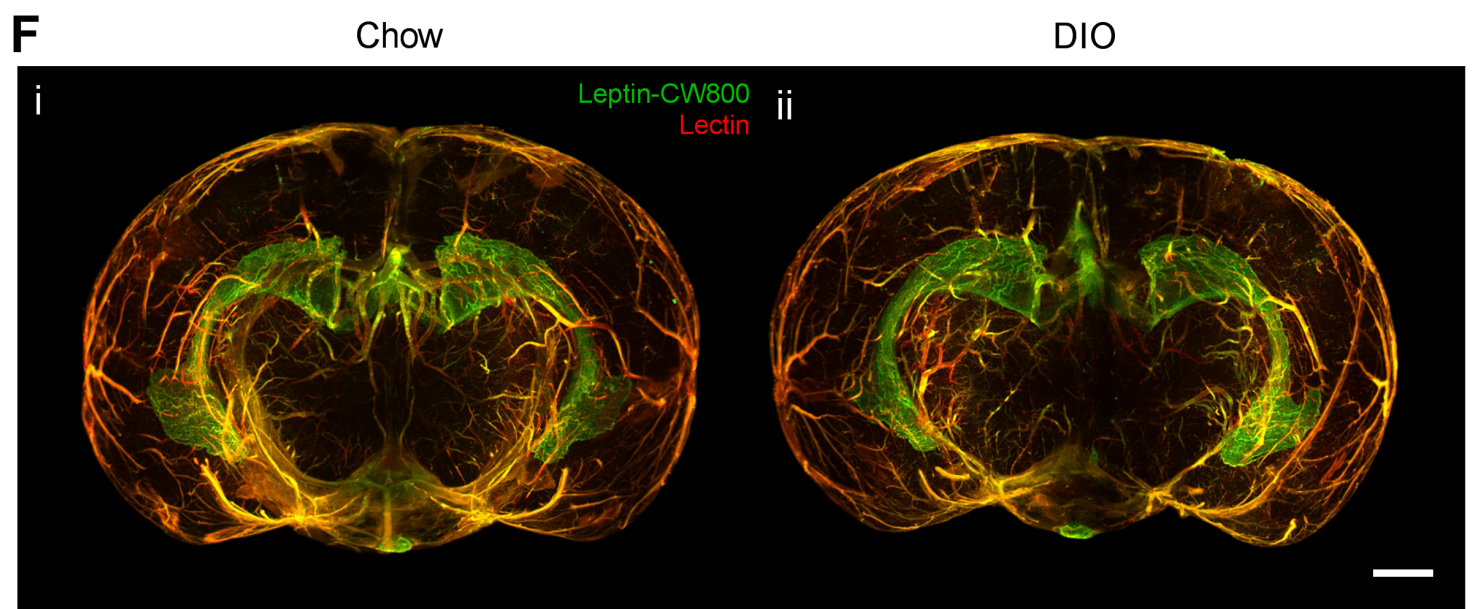
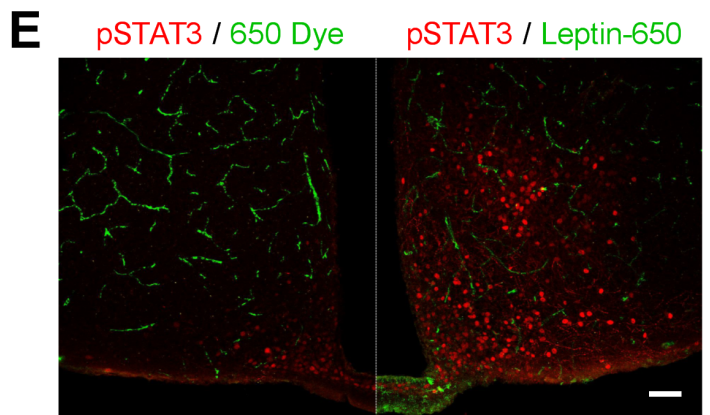
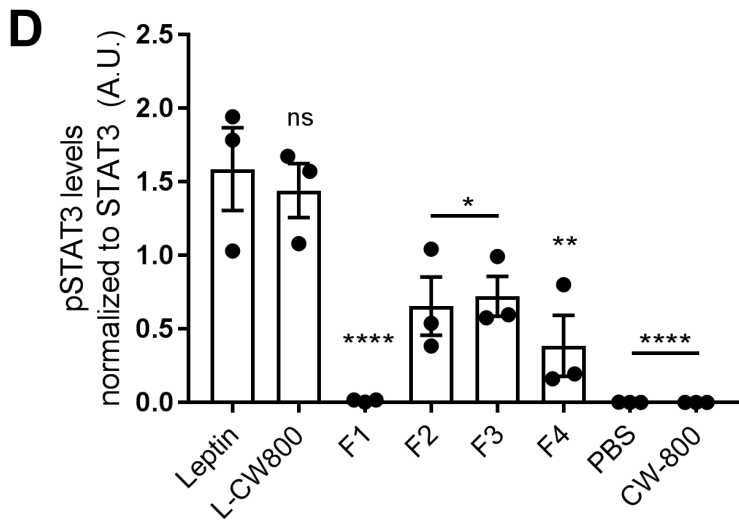
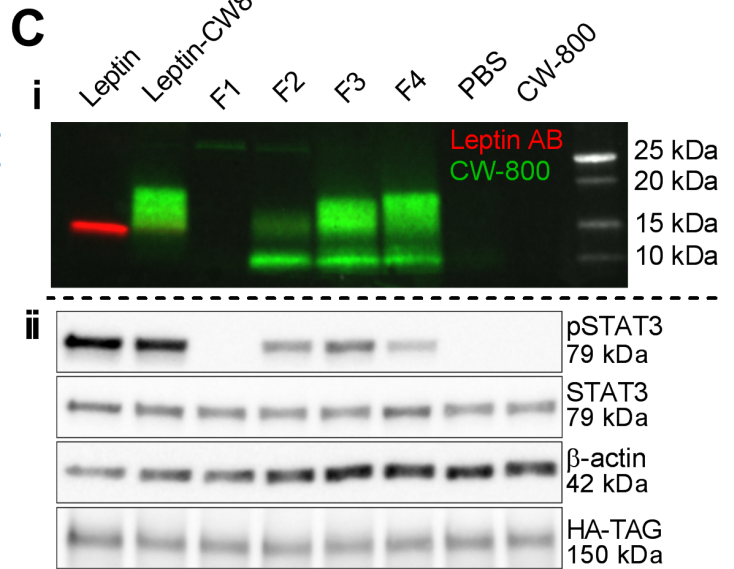
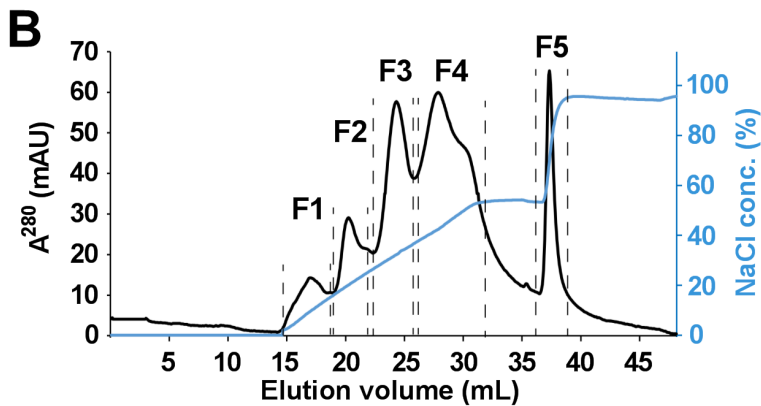
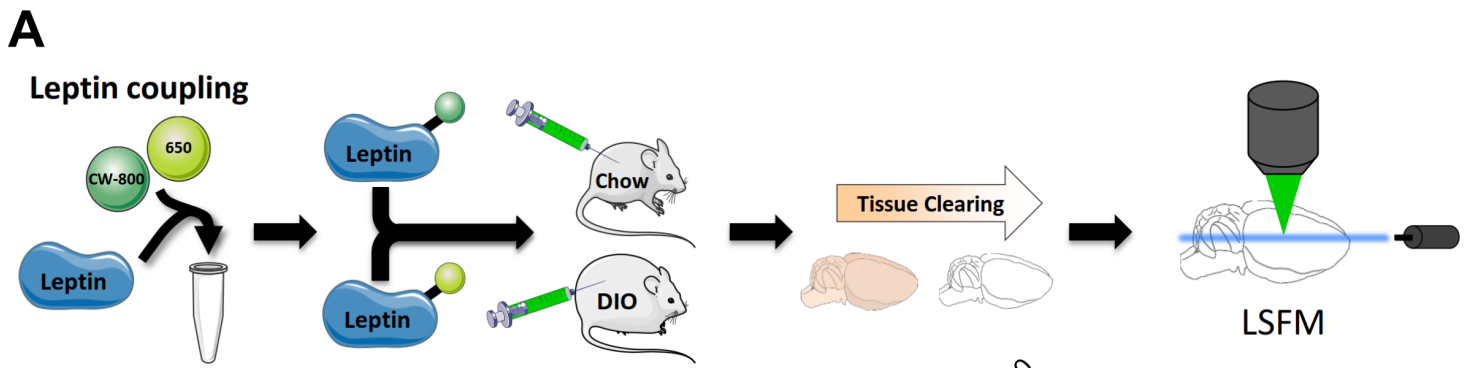
12

13 **Figure 5 | Profound weight loss is associated with increased leptin transport into the MBH.**

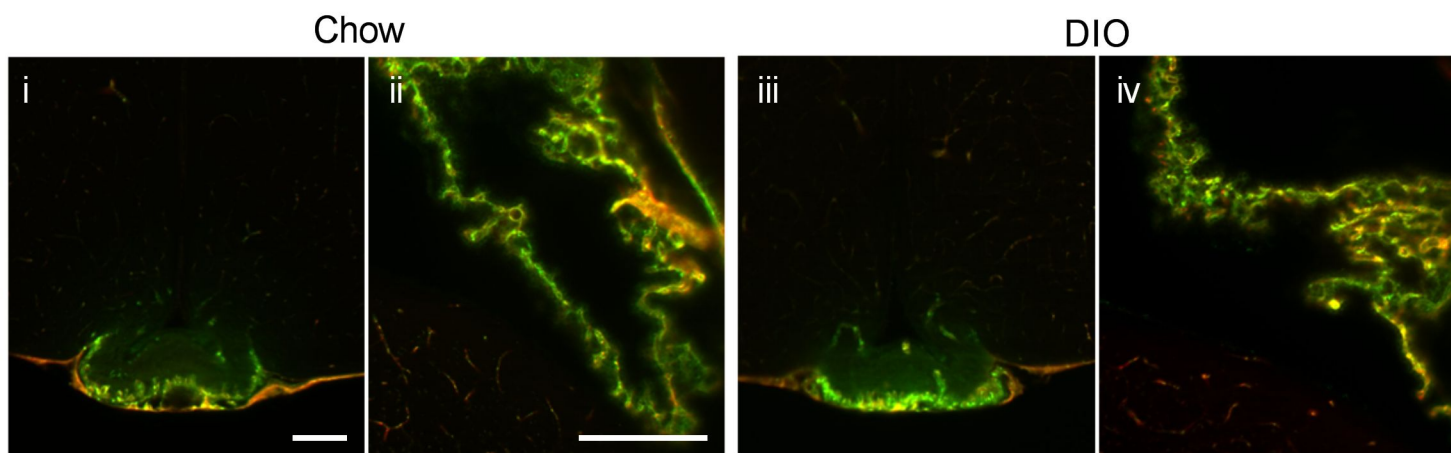
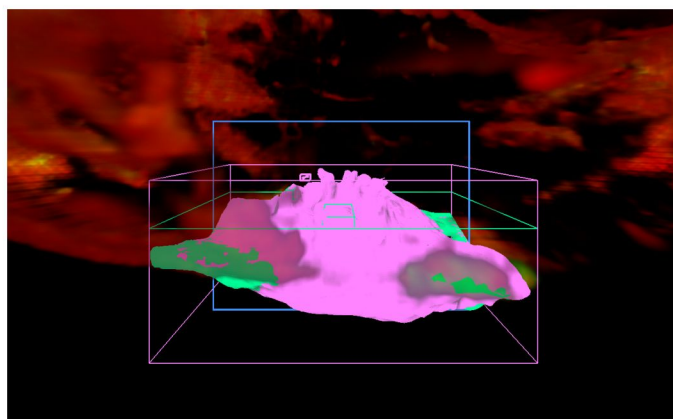
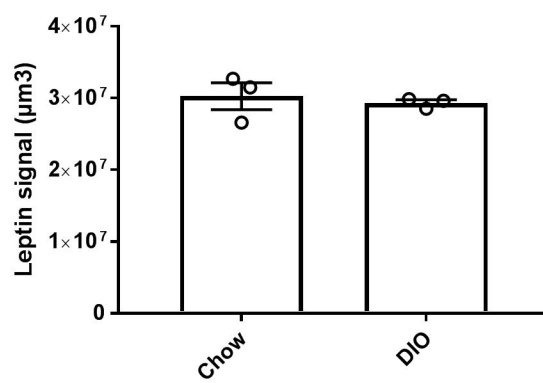
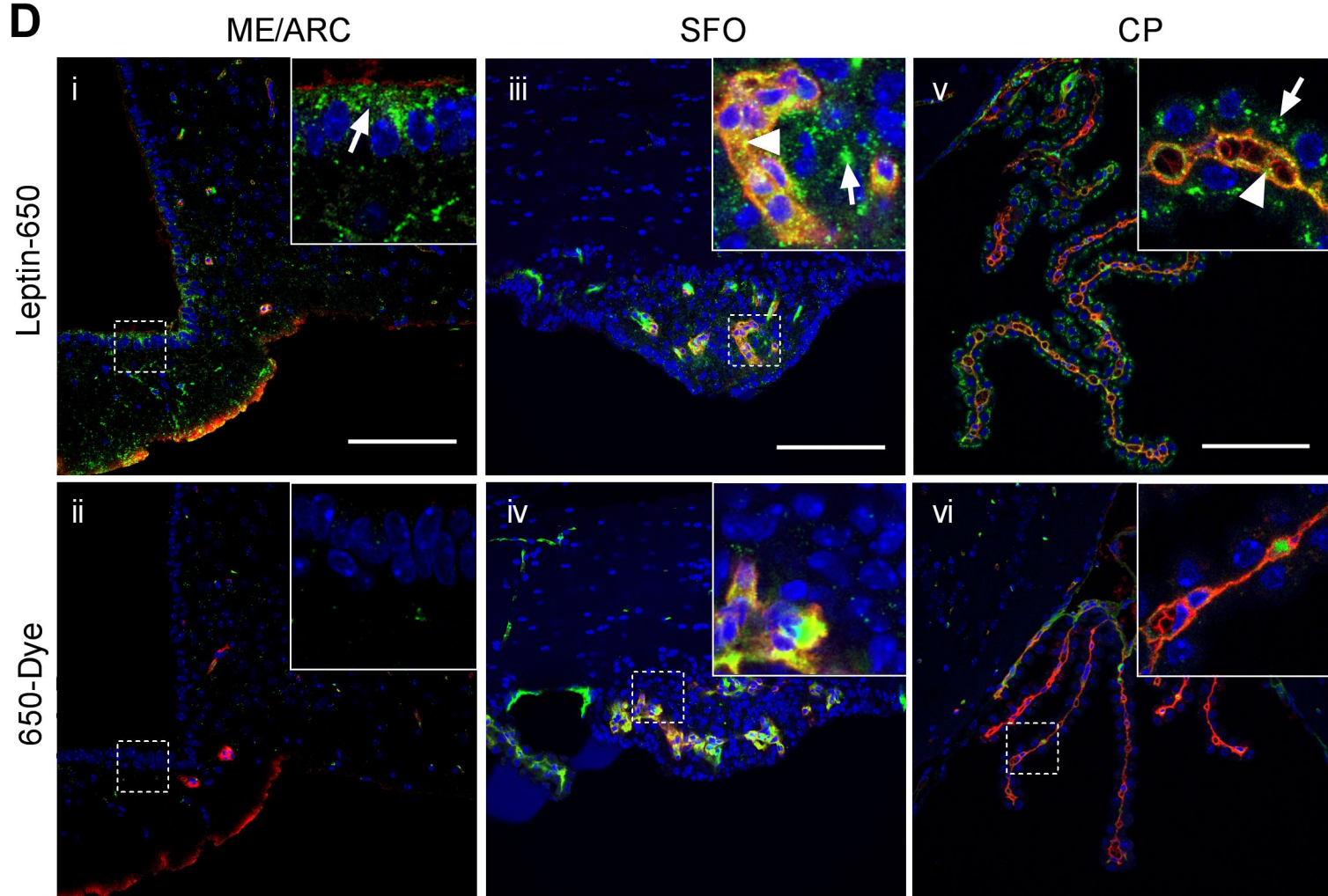
14 **(A, B, C, D)** Leptin levels in the MBH 45min after vehicle (saline, S) or leptin (L) injections  
15 (i.p., 5mg·kg<sup>-1</sup>) in age-matched mice exposed to chow, HFD, H>C, CR or EX4 treatment. Mice  
16 were dissected and MBH samples subjected to western blotting (**A**) and densitometric analyses  
17 **(B-D)** for leptin or leptin sensitivity marker pSTAT3.

18 **(E)** Schematic representation of the proposed route of leptin transport to the MBH in chow and  
19 DIO mice (**E**).

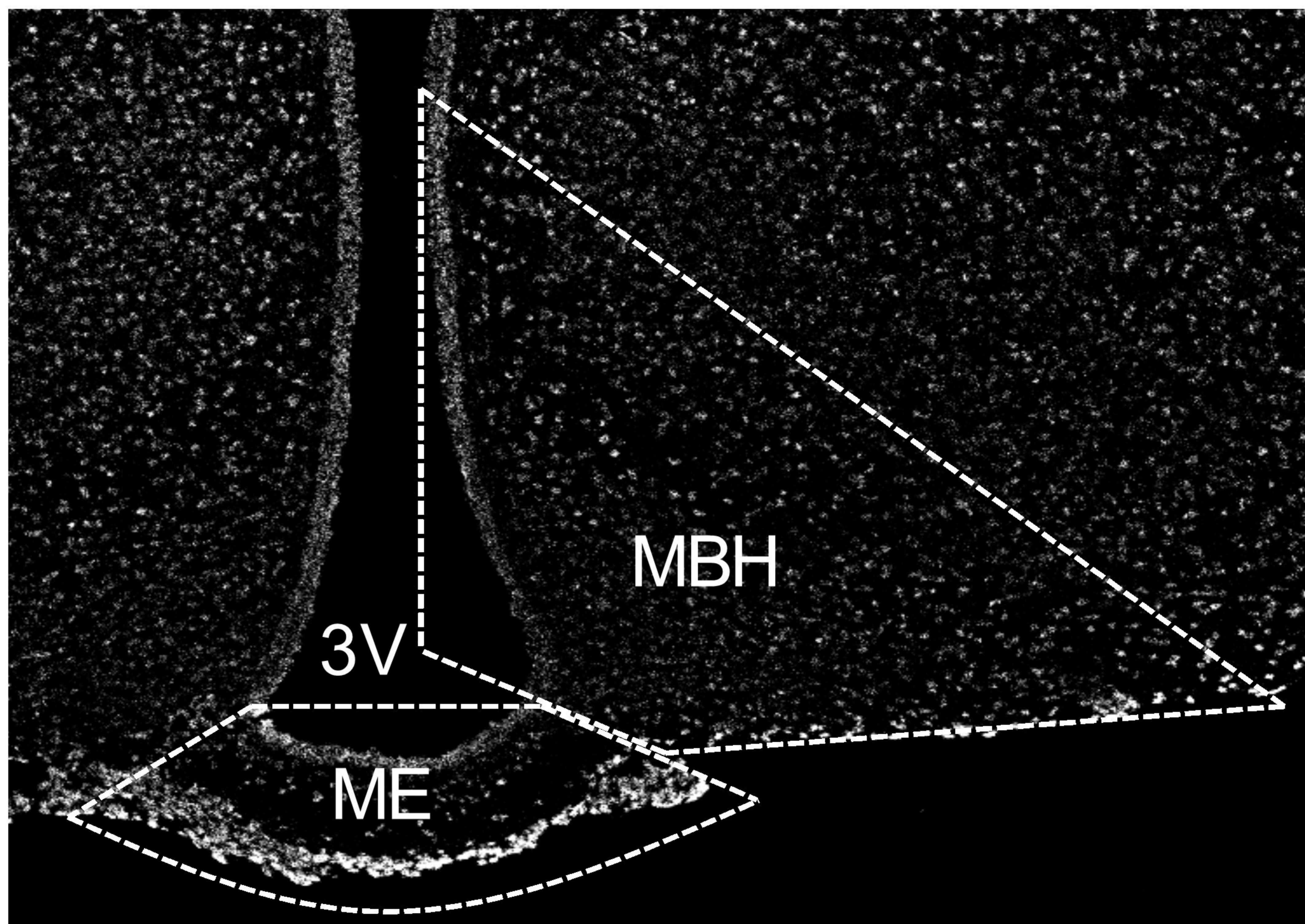
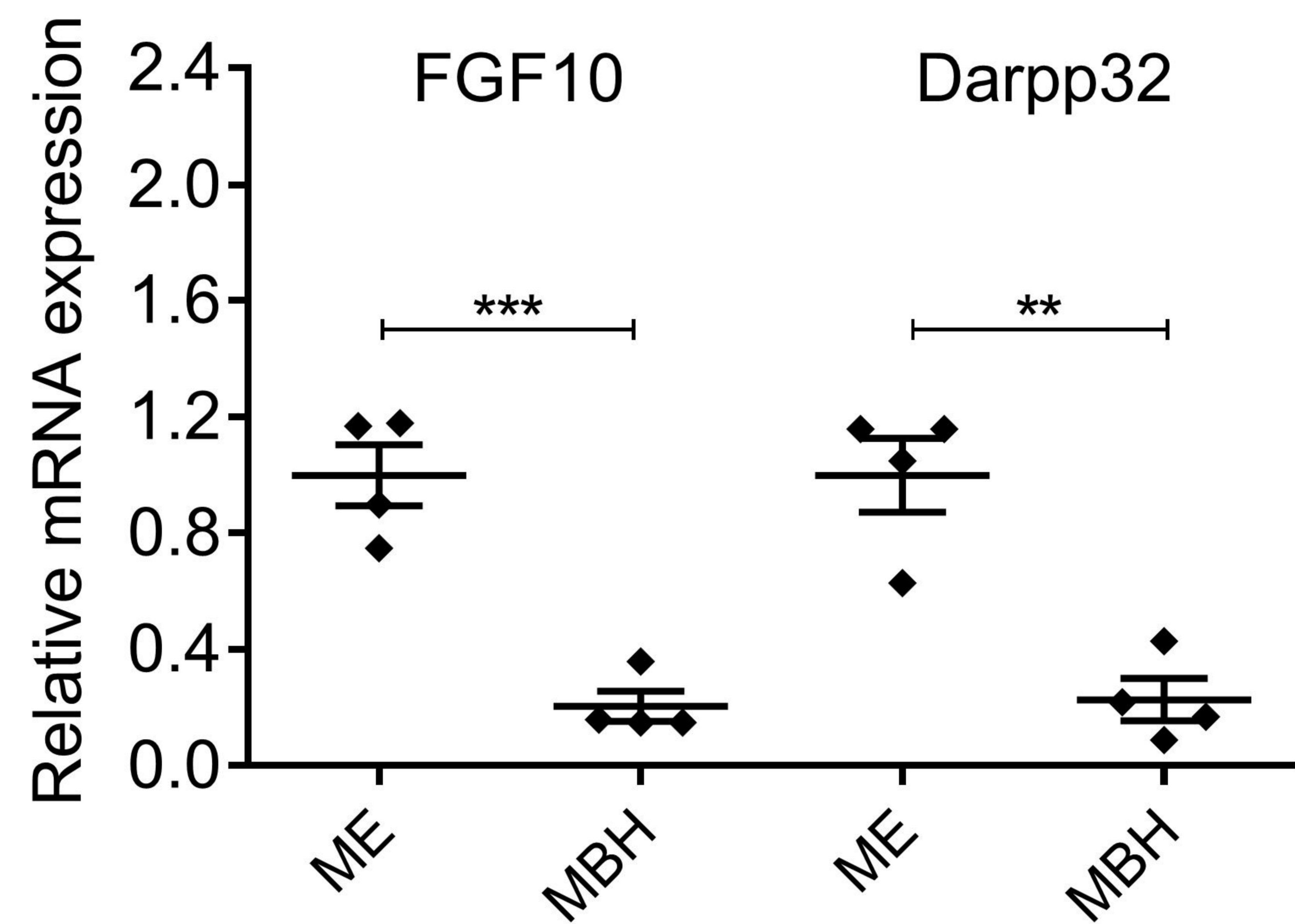
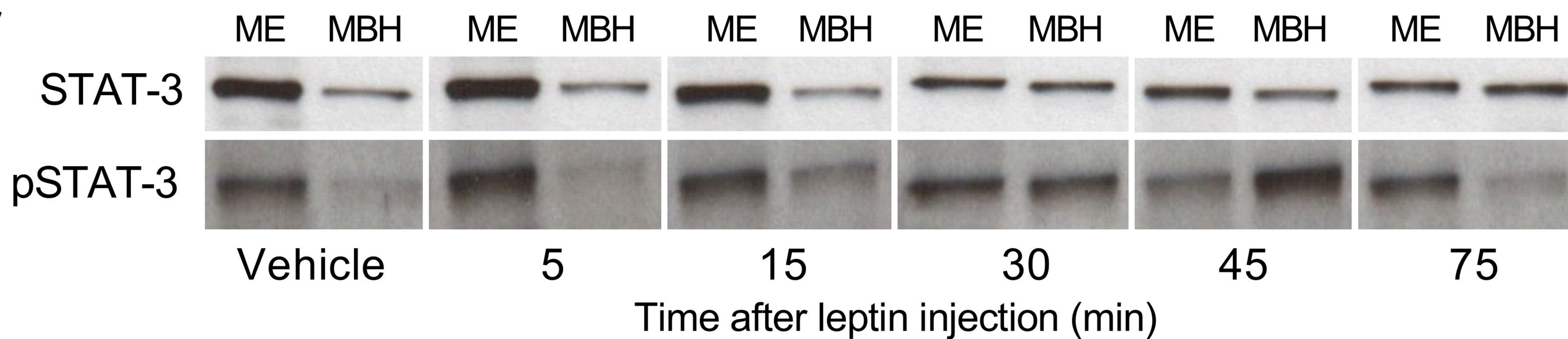
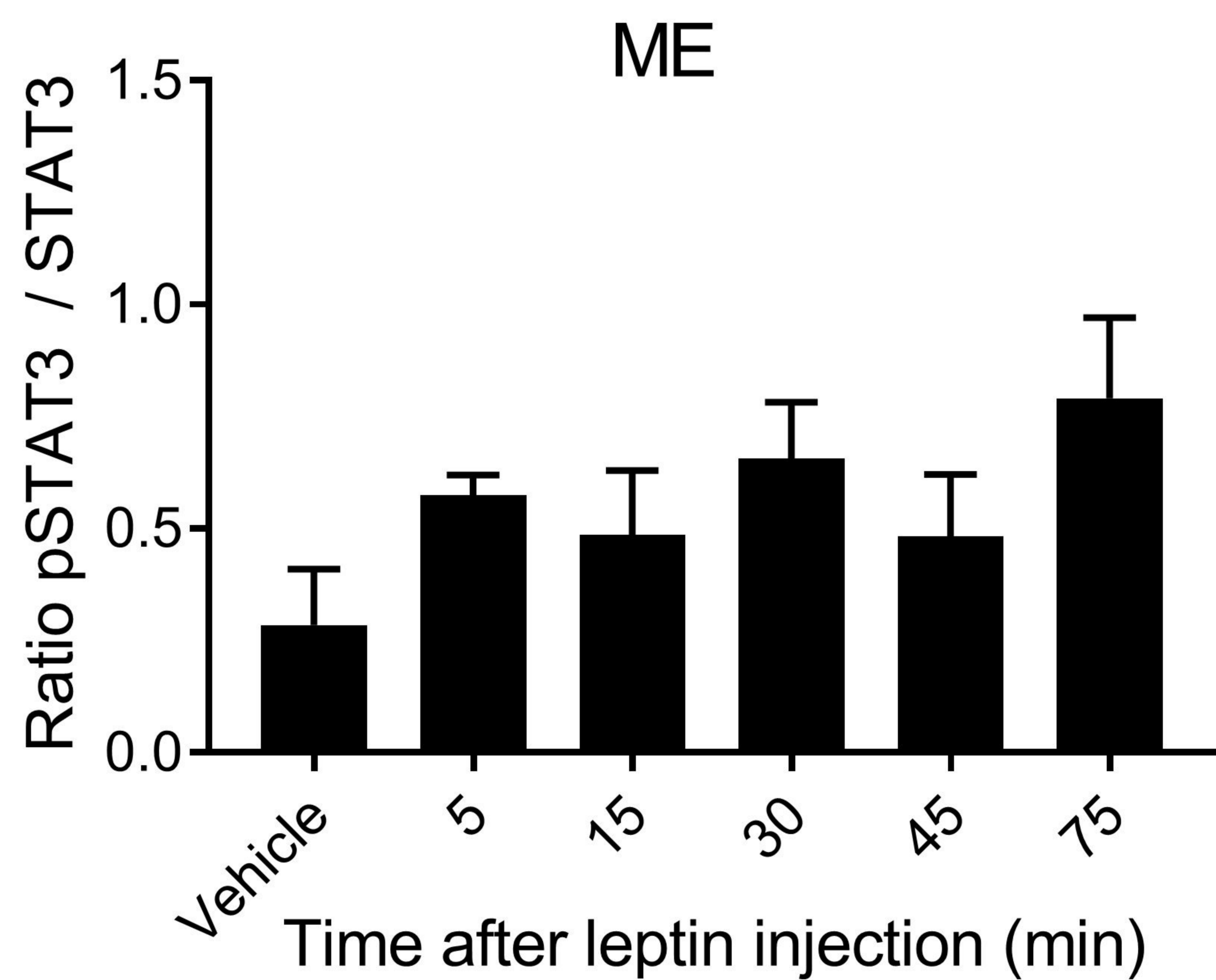
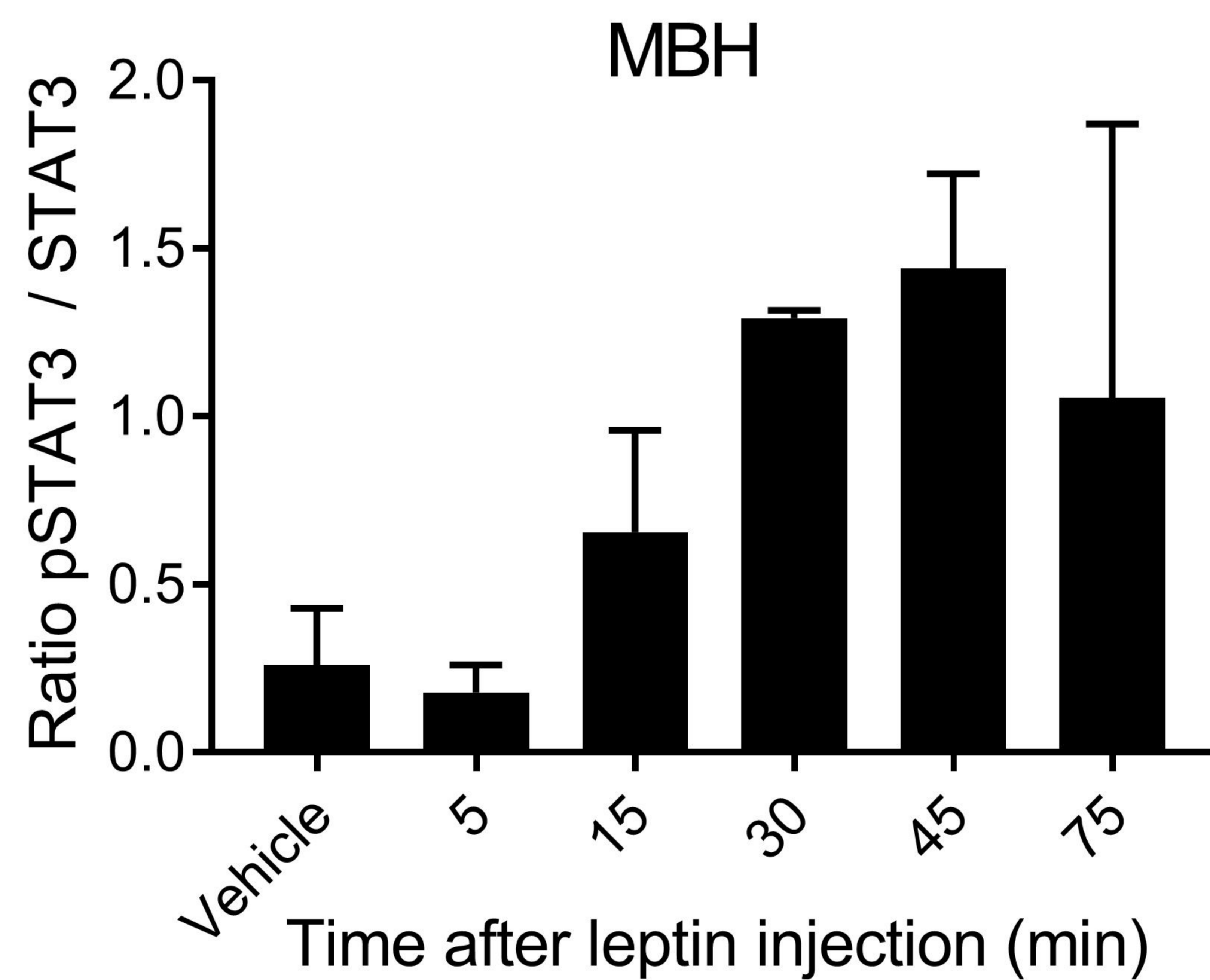
20 Each diet group consists of 6 animals, however samples were pooled due to detection  
21 limitations, resulting in n = 3 replicates for statistical analyses. All data are means  $\pm$  SEM.  
22 Significance was determined using one-way ANOVA. HFD: high fat diet, H>C: diet switch,  
23 CR: calorie restriction, EX4: exendin-4. Significance is depicted as: \*p < 0.05, \*\*p < 0.01.



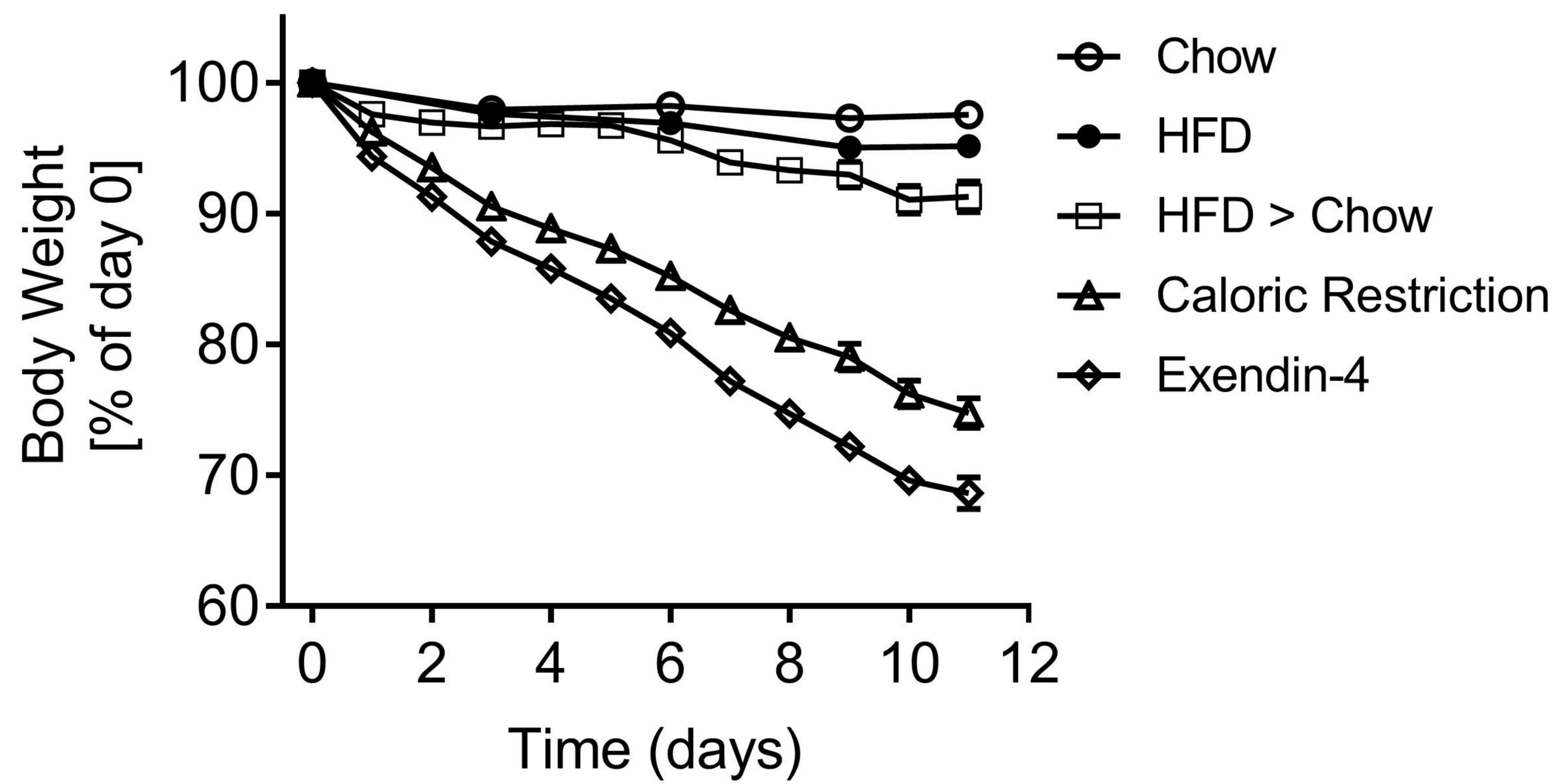
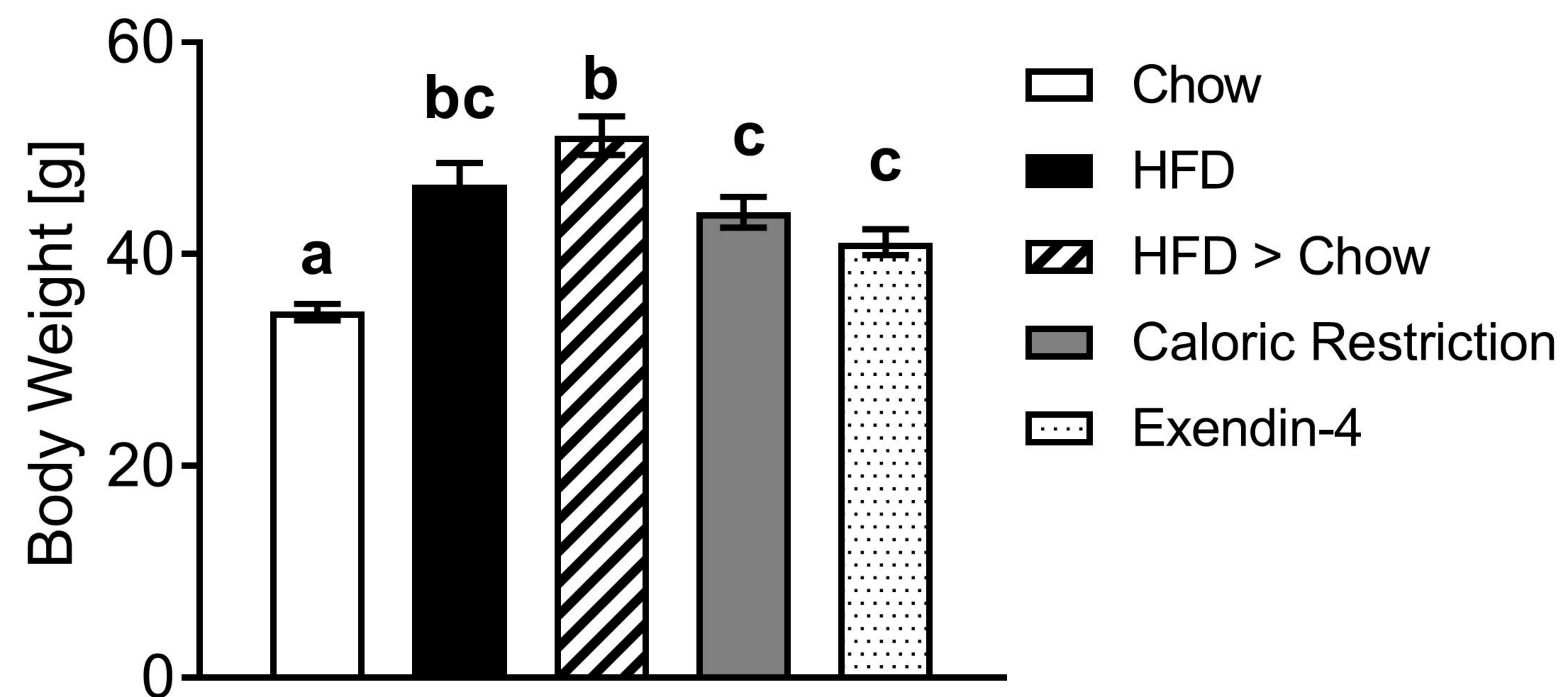
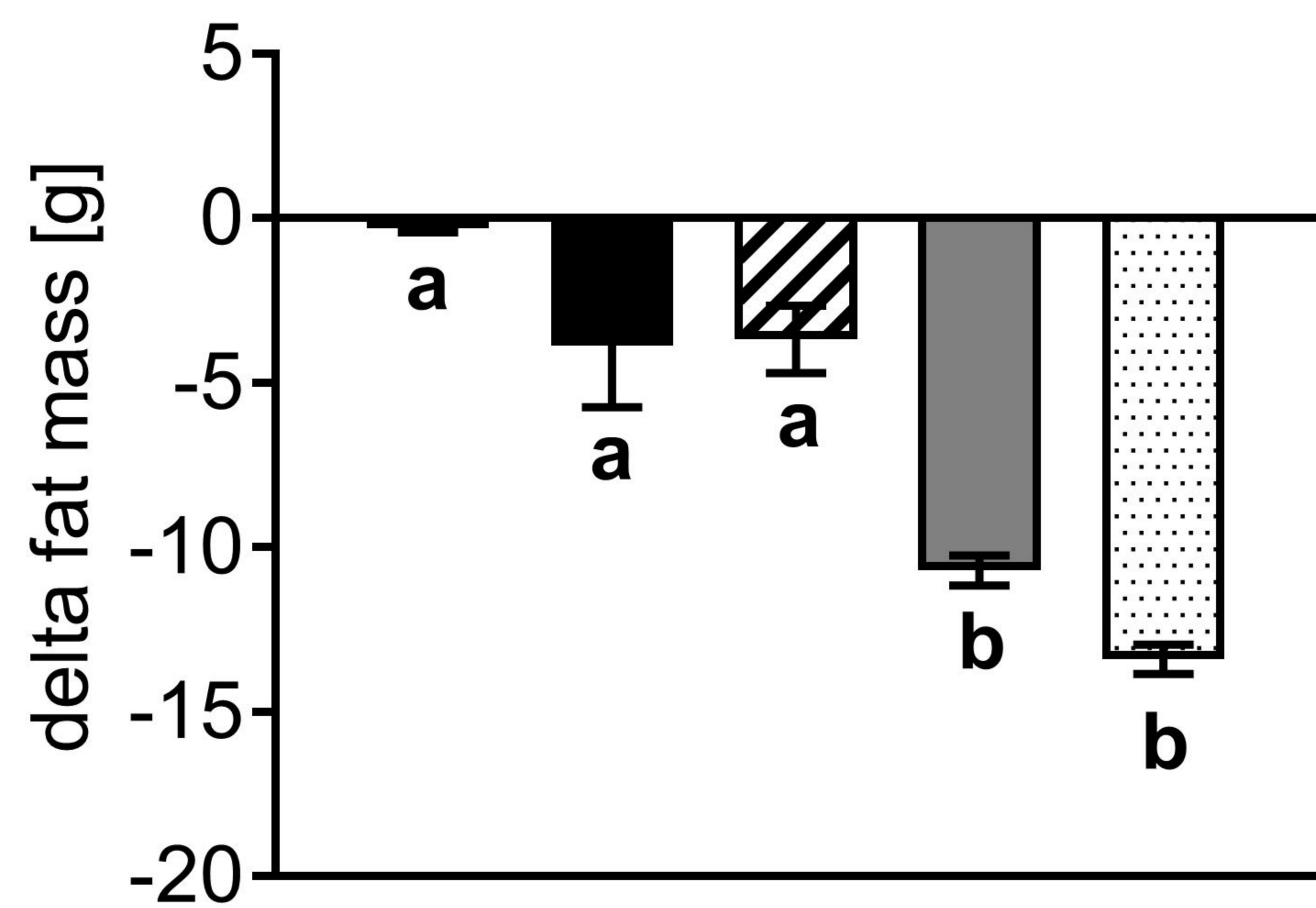
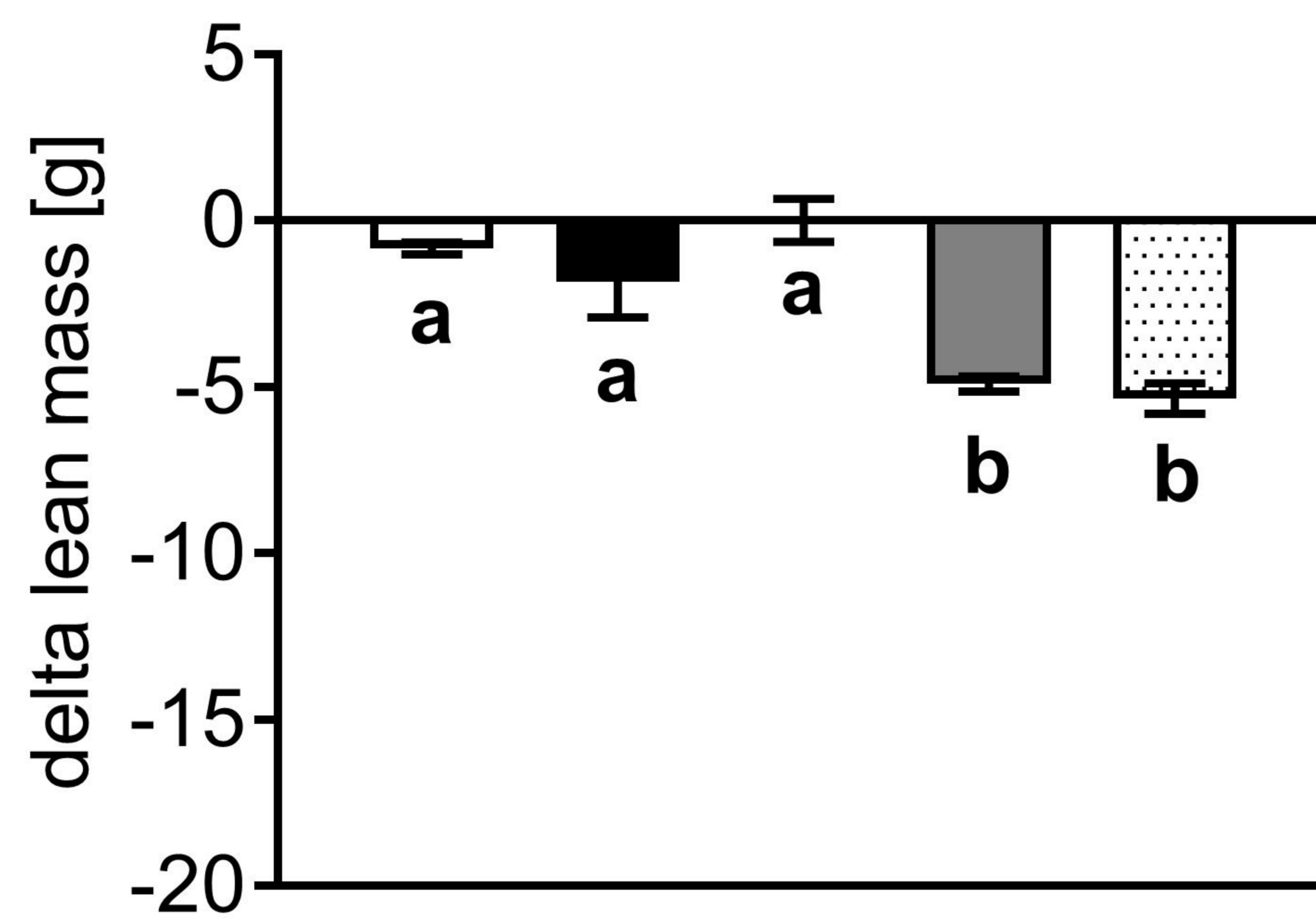
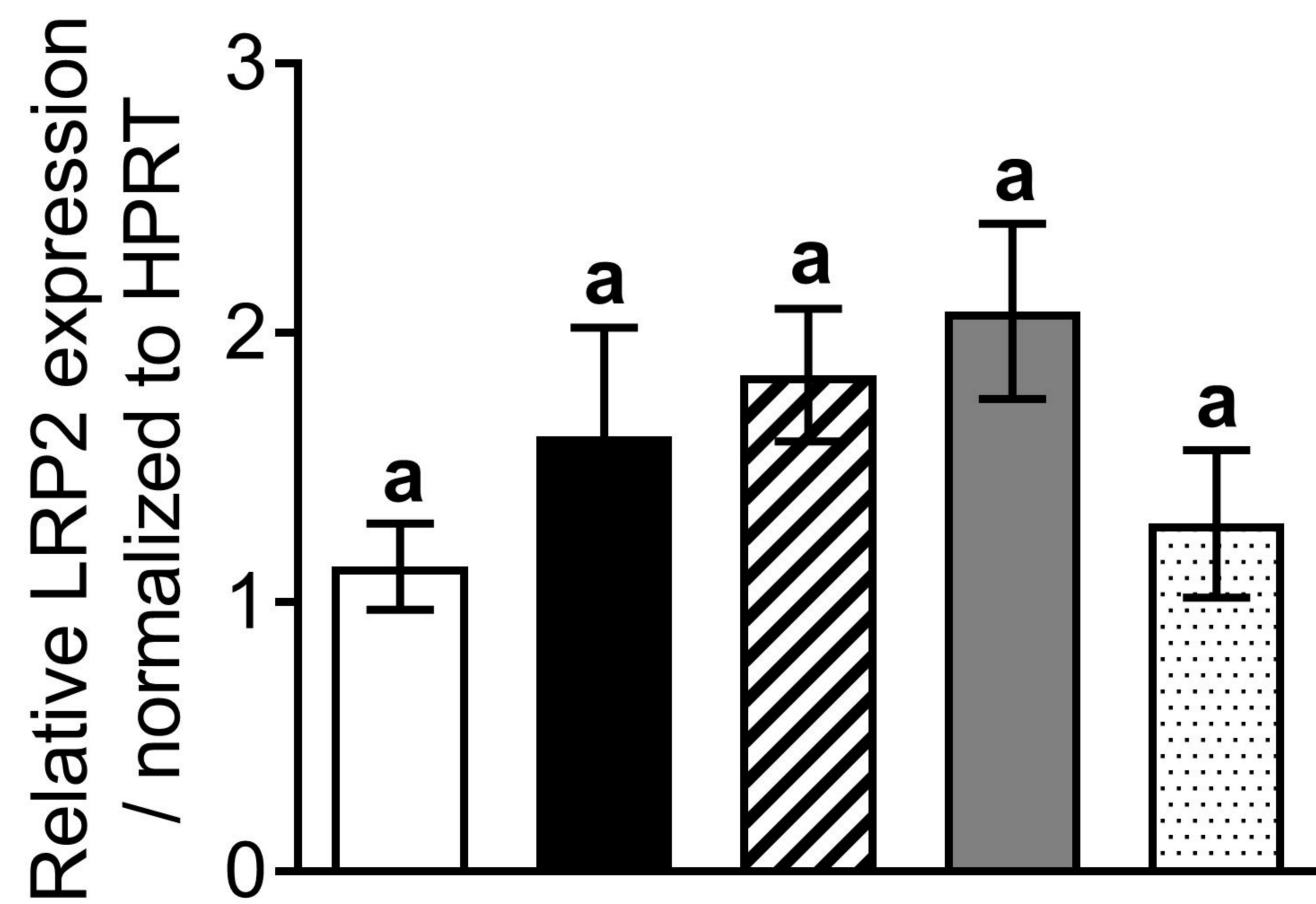
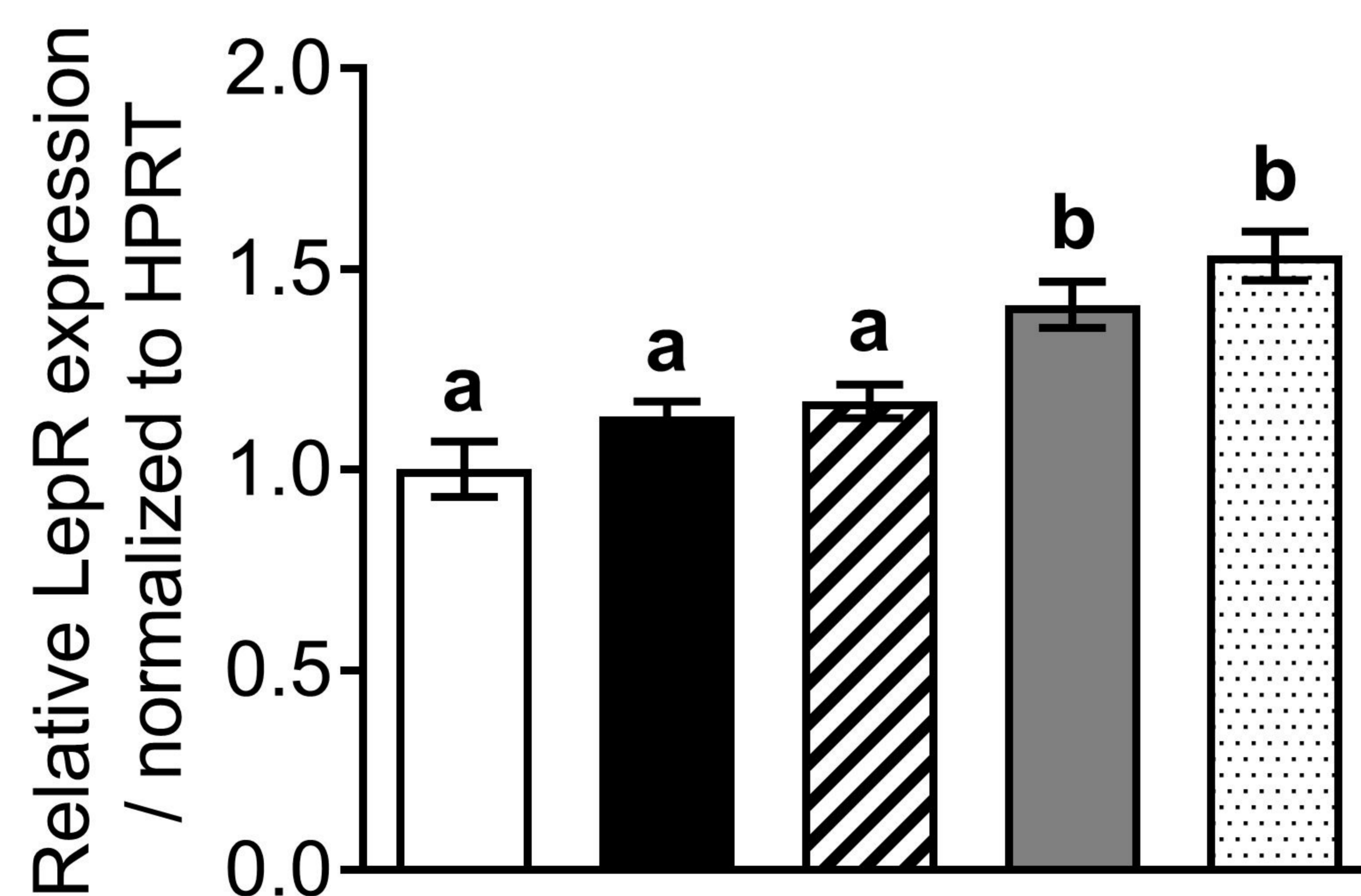


**A****B****C****D**

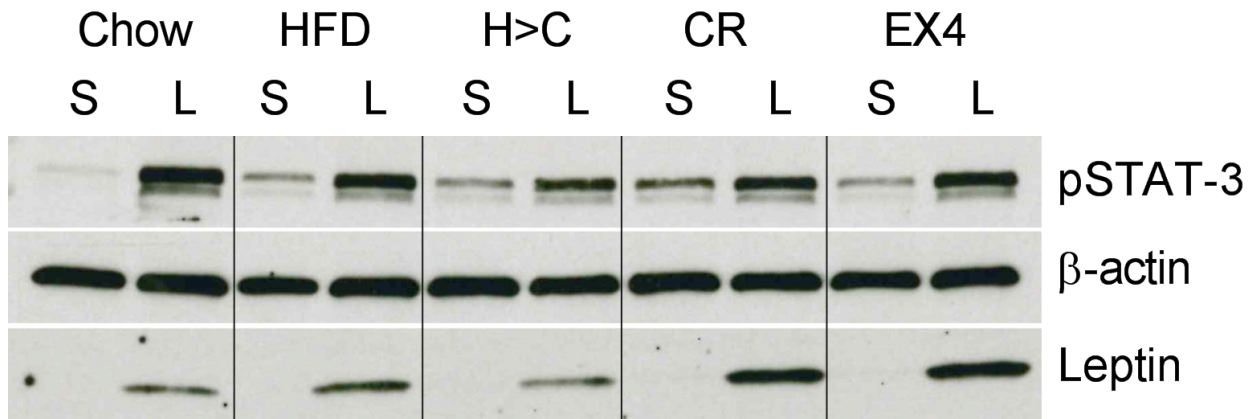
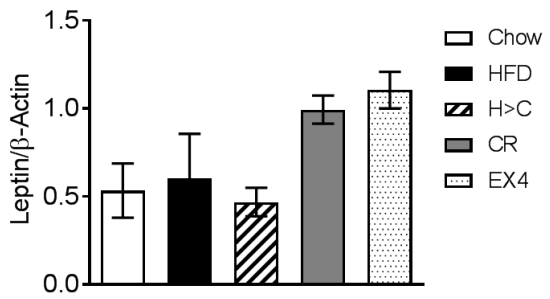
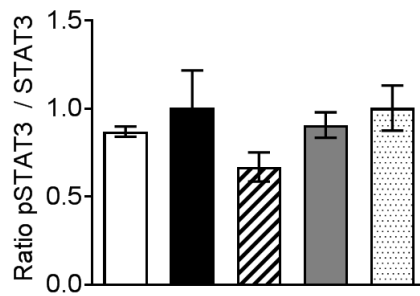
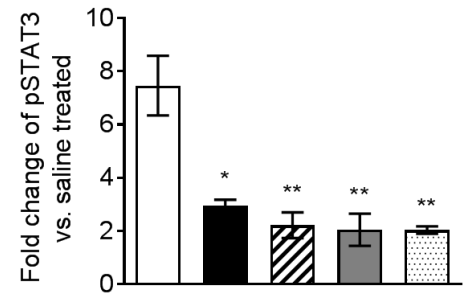


**A****B****C****D****E**



**A****B****C****D****E****F**



**A****B****C****D****E**