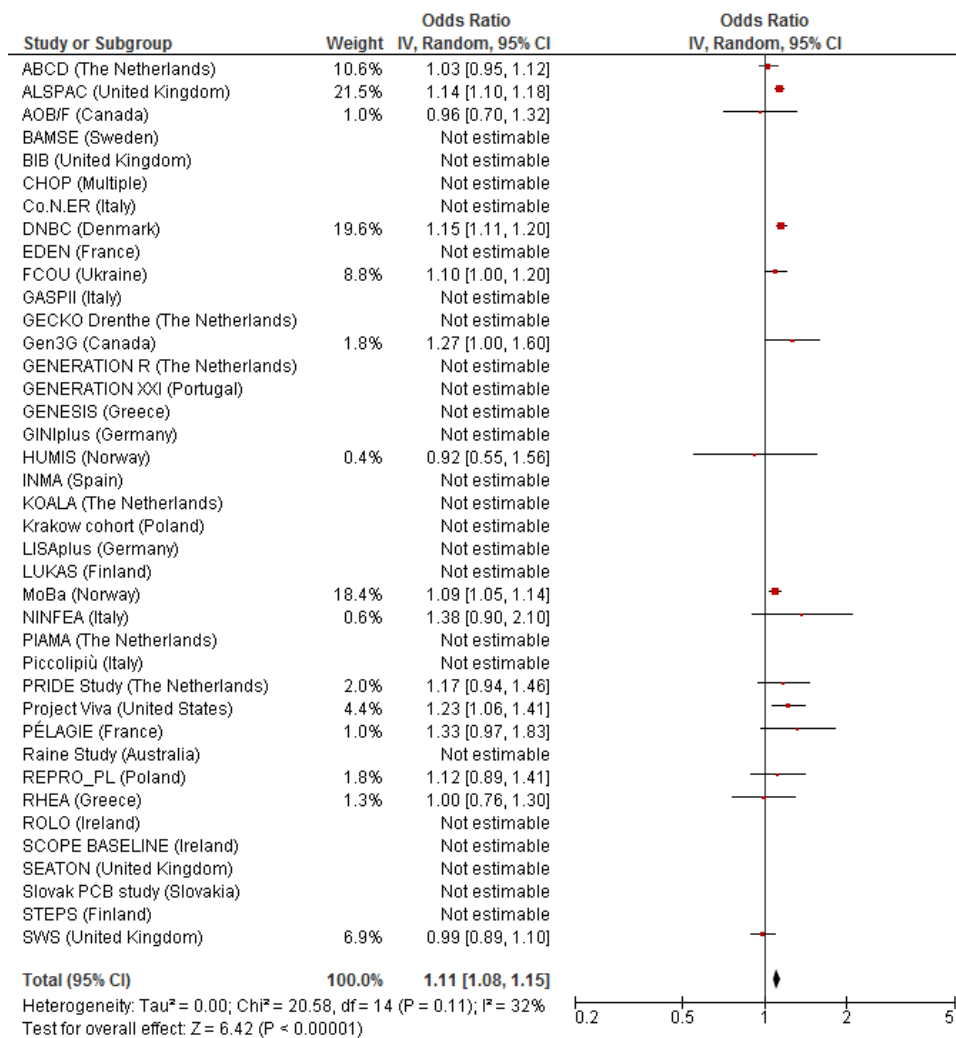
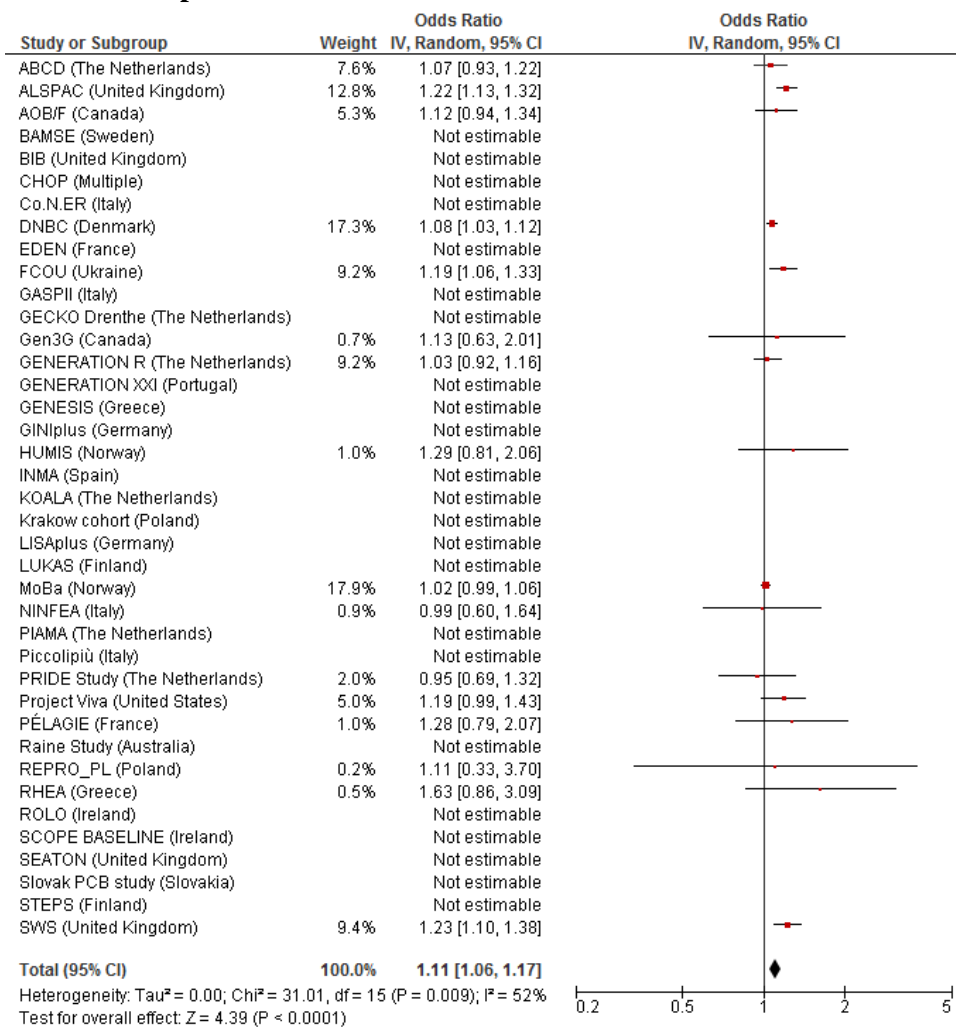


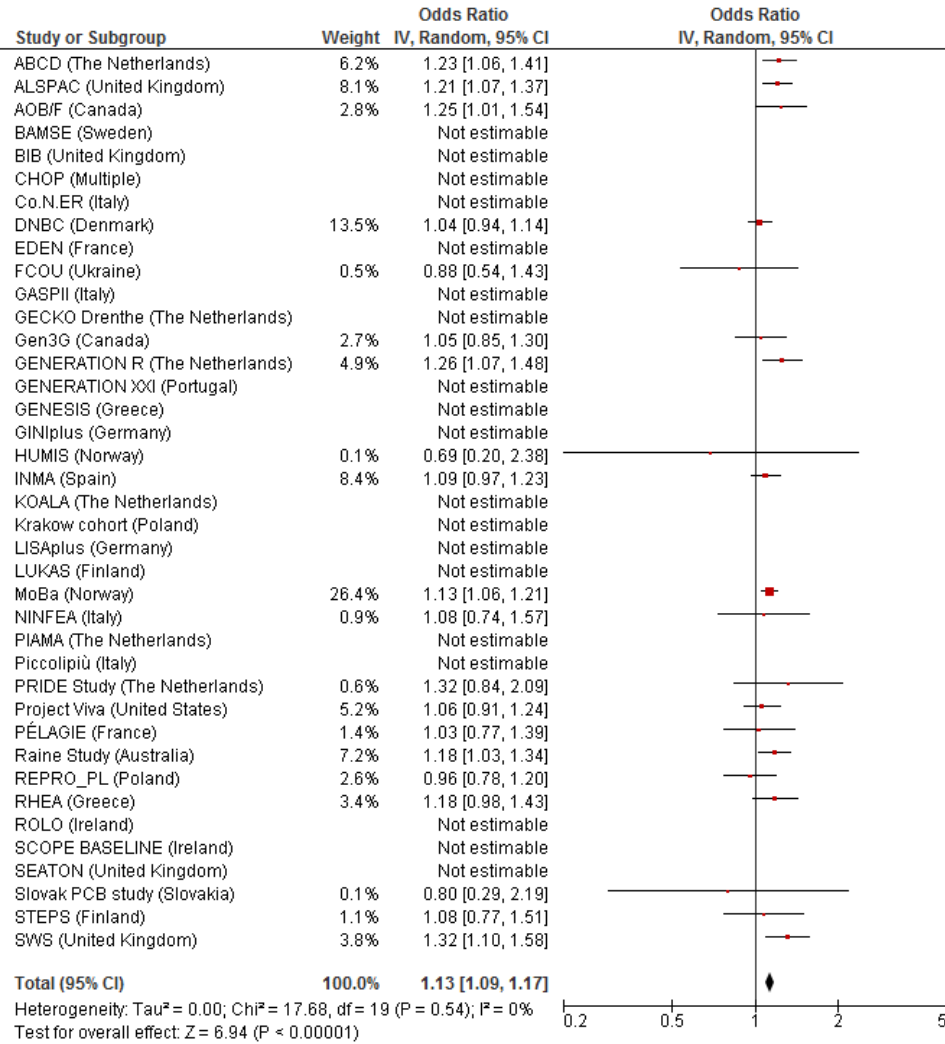
A. Gestational hypertension



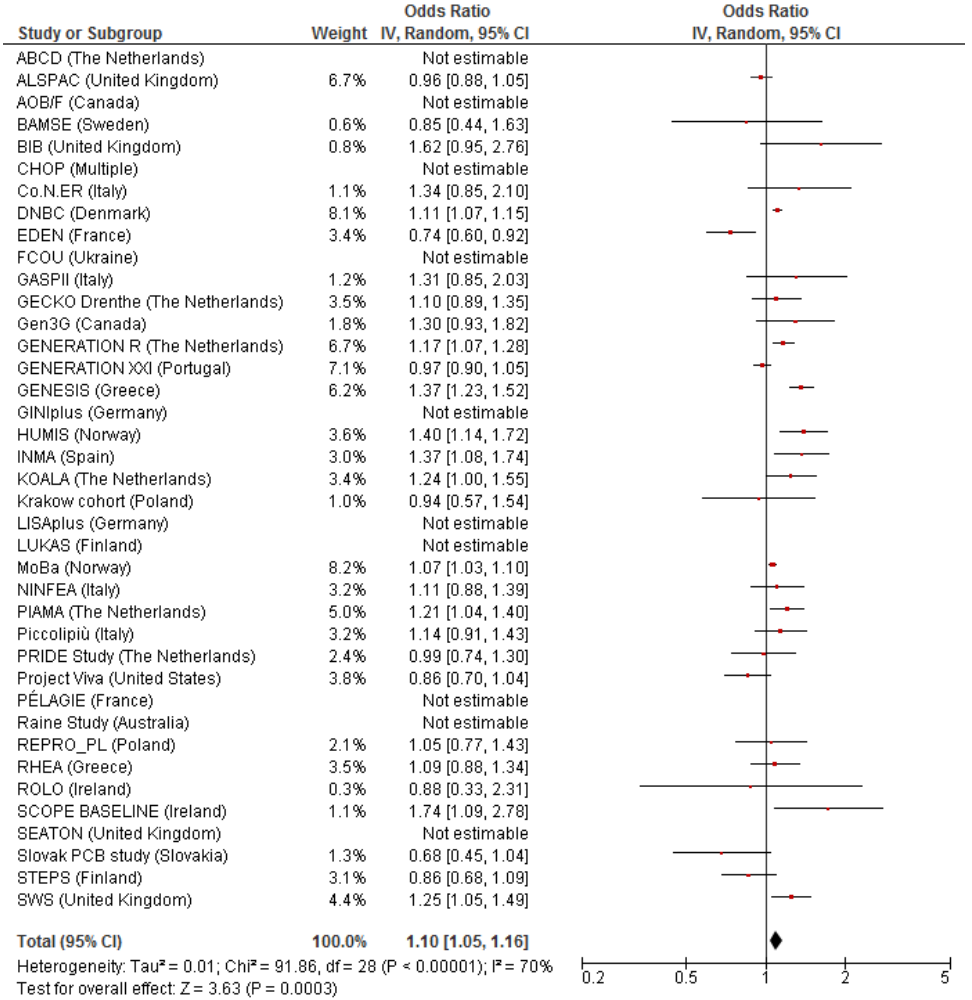
B. Pre-eclampsia



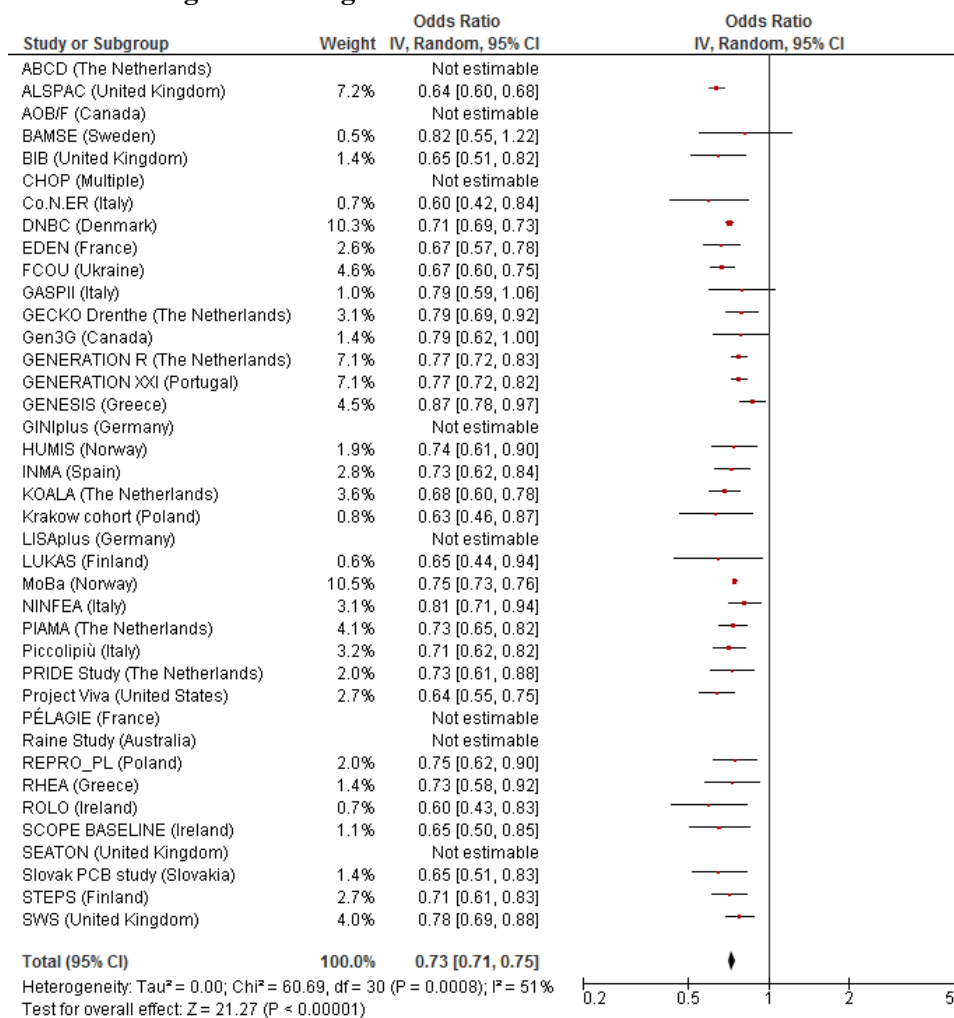
C. Gestational diabetes



D. Preterm birth



E. Small for gestational age



F. Large for gestational age

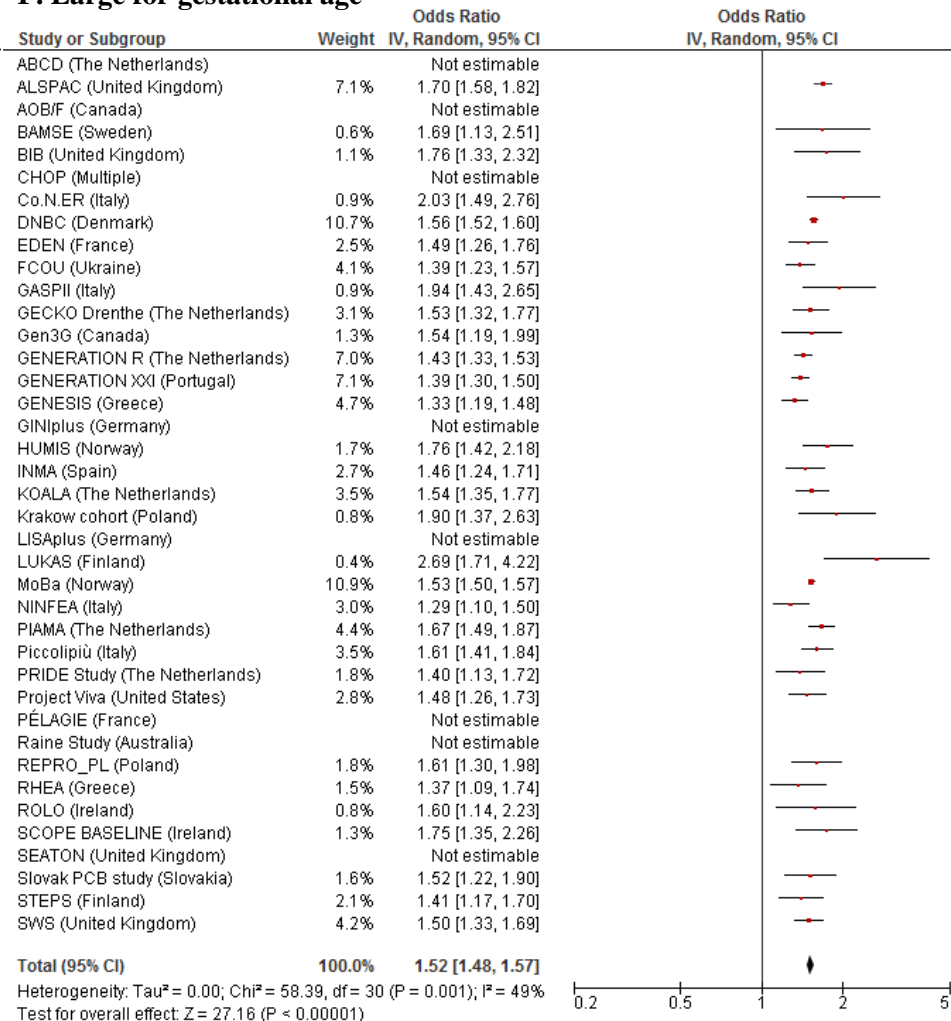


Figure S5. Gestational weight gain and the risks of pregnancy complications assessed by 2-stage IPD meta-analysis^a

^aValues are odds ratios (95% confidence intervals) per cohort and pooled from binary logistic regression models that reflect the risk of pregnancy complications per SD increase in gestational weight gain. The corresponding 1-stage IPD meta-analysis results are presented in the footnote of Figure 2. Mothers diagnosed with pre-eclampsia were excluded from the models for gestational hypertension. The reference group for the analyses on pre-eclampsia comprises the mothers without both pre-eclampsia and gestational hypertension. The reference group for the analyses on small and large size for gestational age at birth is appropriate size for gestational age at birth. Models are adjusted for maternal age, educational level, parity, smoking habits during pregnancy and maternal pre-pregnancy body mass index. Models for birth complications are additionally adjusted for child's sex. The cohorts for which no estimate was provided had no data available for that particular analysis. The heterogeneity between the estimates of each cohort varied between 0% and 70%.