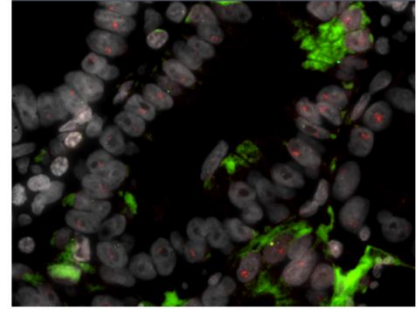
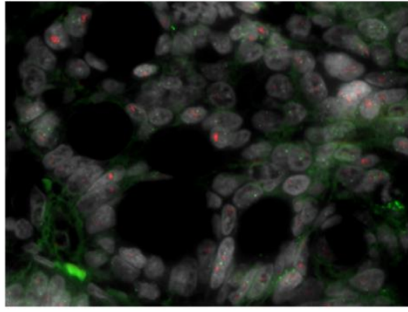


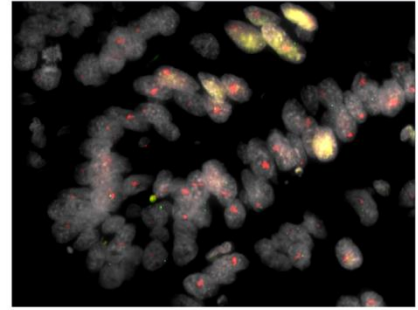
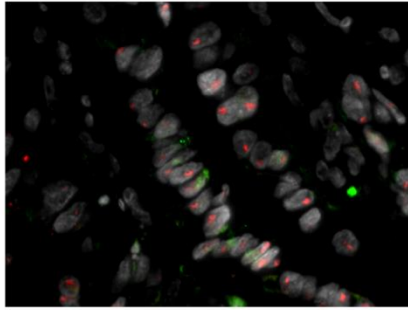
after MALDI imaging

without MALDI imaging

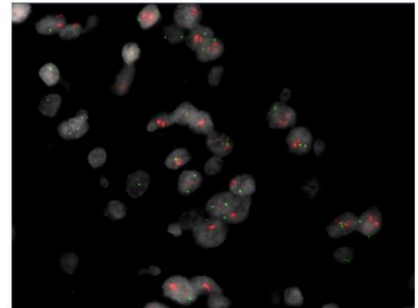
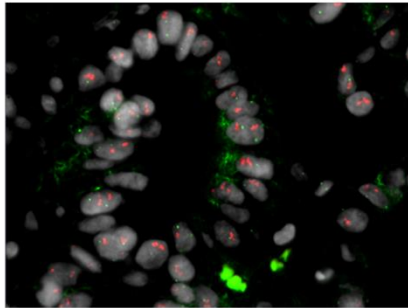
Biopsy 1



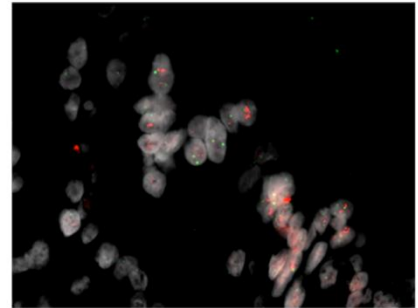
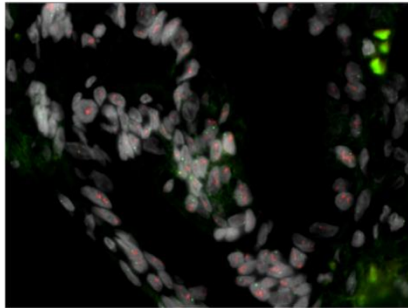
Biopsy 2



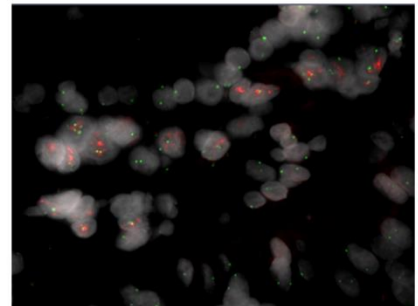
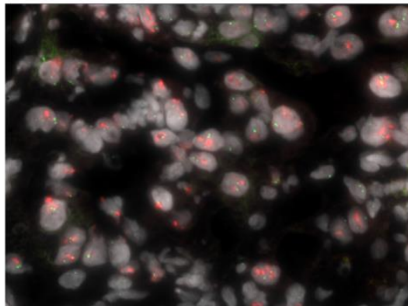
Biopsy 3



Biopsy 4

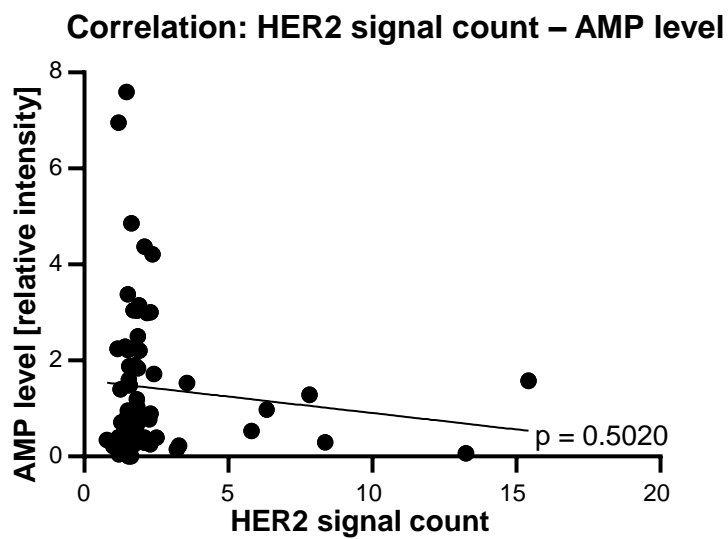


Biopsy 5

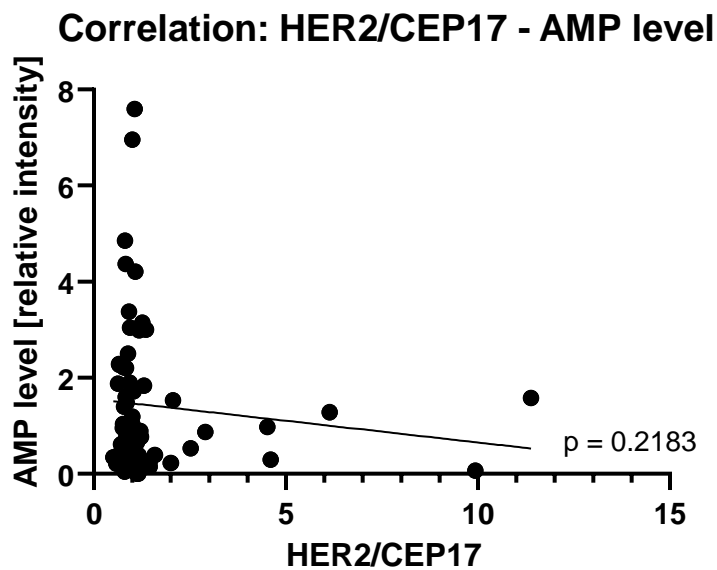


20 μ m

Supplemental Fig. 1. Exemplary pictures of the FISH analysis for all analyzed patient biopsies.



Supplemental Fig. 2. Spearman correlation of AMP level detected by MALDI imaging and HER2 signal count derived from FISH testing of a tissue microarray containing 69 human gastroesophageal adenocarcinoma tissues.



Supplemental Fig. 3. Spearman correlation of AMP level detected by MALDI imaging and HER2/CEP17 derived from FISH testing of a tissue microarray containing 69 human gastroesophageal adenocarcinoma tissues.