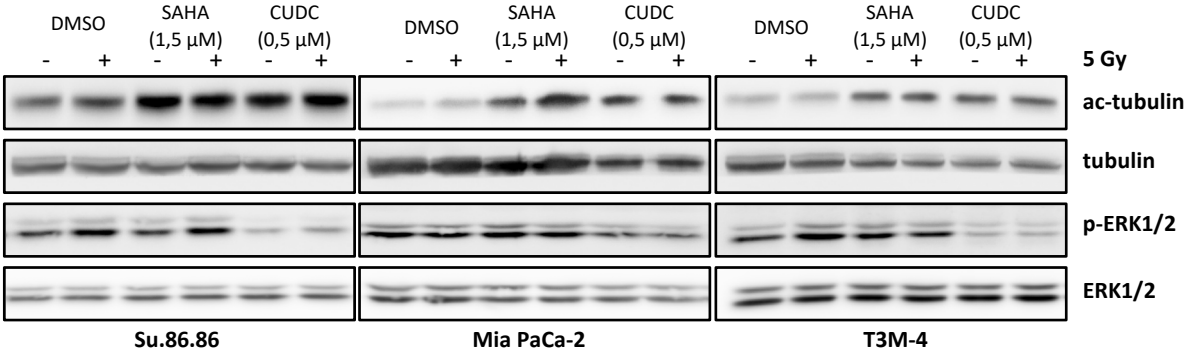


A.

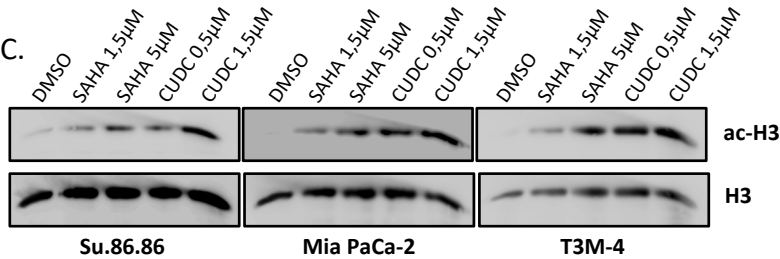
	class I HDAC				class II HDAC							Ref.
compound	1	2	3	8	4	5	6	7	9	10		
SAHA	+++	+	++	+	o	o	+++	o	o	++		[18, 39]
CUDC-101	+++	++	+++	+	++	++	+++	+	++	++	EGFR, HER2	[19]

activity of inhibition: o = low, + = moderate, ++ = good, +++ = high

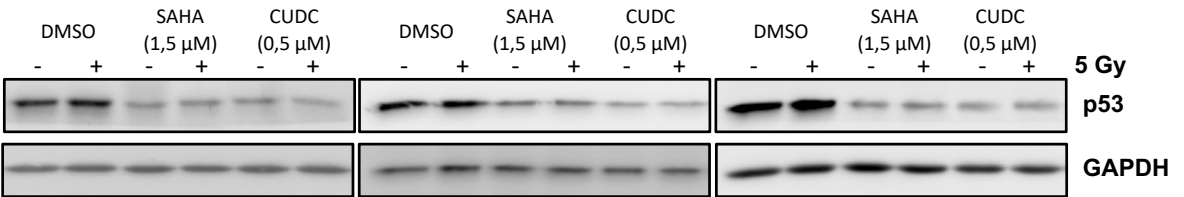
B.



C.



D.



Supplementary Figure 1: SAHA and CUDC-101 activities in pancreatic cancer cells (A) summary of published activities of SAHA and CUDC-101 on histone deacetylases (B) representative western blot of SAHA and CUDC-101 effects in whole cell lysates obtained from Su.86.86, MiaPaca-2 and T3M-4 cells (n=2) (C) western blot of histone lysates of SAHA or CUDC-101 treated pancreatic cancer cells (n=1) (D) representative western blots showing SAHA or CUDC-101 effects on p53 protein expression (n=2).