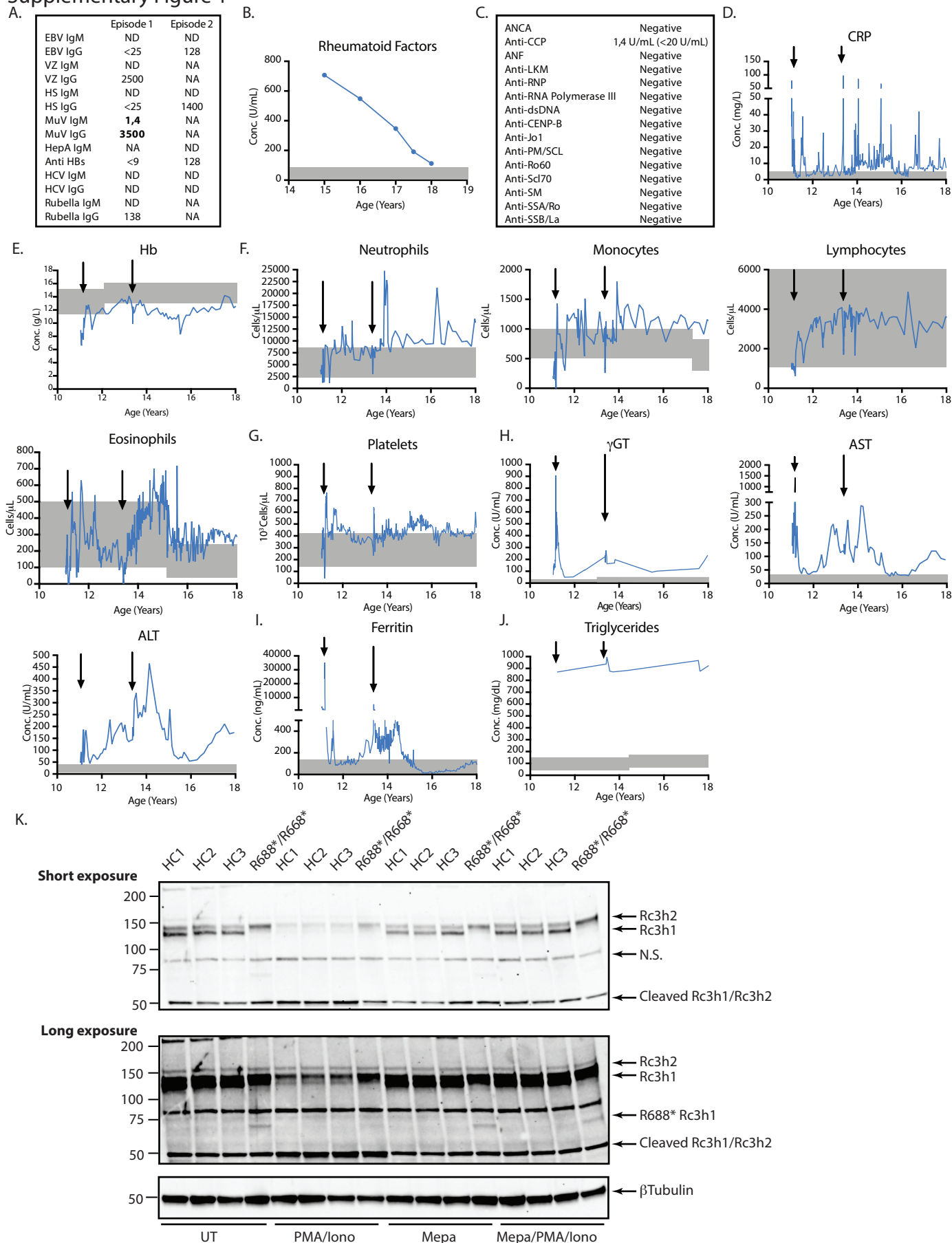


# Supplementary Figure 1



**Supplementary Fig. 1. (A)** Overview of pathogen directed immunoglobulin concentrations measured in the setting of hyperinflammatory episodes. **(B)** Concentration of rheumatoid factors measured during clinical follow-up. **(C)** Overview of probed self-antigen directed immunoglobulins. **(D-J)** Evolution of a number of clinical laboratory parameters. Grey bars depict reference values. CRP: C reactive protein; Hb: hemoglobin;  $\gamma$ GT: gamma glutamyl-transpeptidases; AST: aspartate transaminases; ALT: alanine transaminases. **(K)** Immunoblot analysis of Roquin-1, its paralog Roquin-2, their cleavage products and the truncated R688\* mutant in T cells of 3 healthy controls (HC) and the R688\*/R688\* proband treated with PMA, ionomycin and/or mepazine.  $\beta$ -Tubulin is used as a loading control. N.S.: nonspecific band. Supp. Fig. 1K is a representative blot for 2 independent experiments.