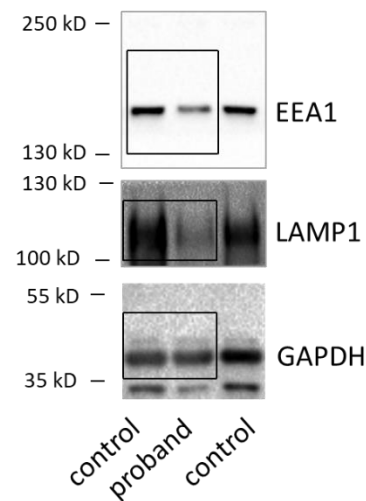


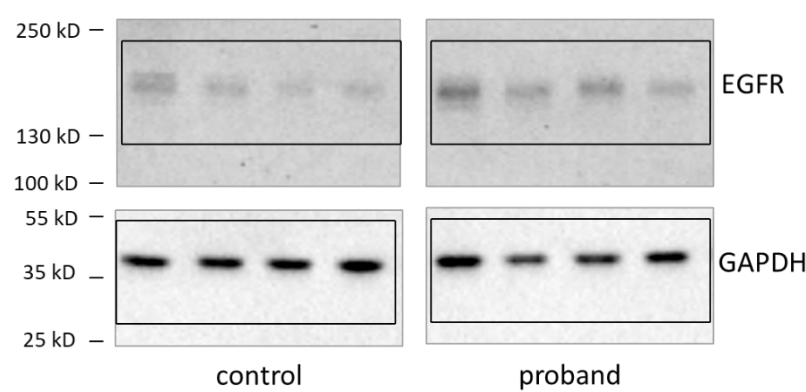
Supplementary Data

The full-length blots and gels used to make the images in figure 3, figure 4, figureS4 and figure S9 with the rectangles representing the cropped images. Loading controls (GAPDH and β -III Tubulin) and target proteins in western blots were run on the same gels and the same lanes. The molecular weights of protein ladder in protein electrophoresis (SDS-PAGE) and western blotting were 250, 130, 100, 55, 35, 25, 15 and 10 kDa. The molecular weight of the DNA ladder in Fig. S4 were 2000, 1800, 1500, 1200, 1000, 900, 800, 700, 600, 500, 400, 300, 200, 100 bp.

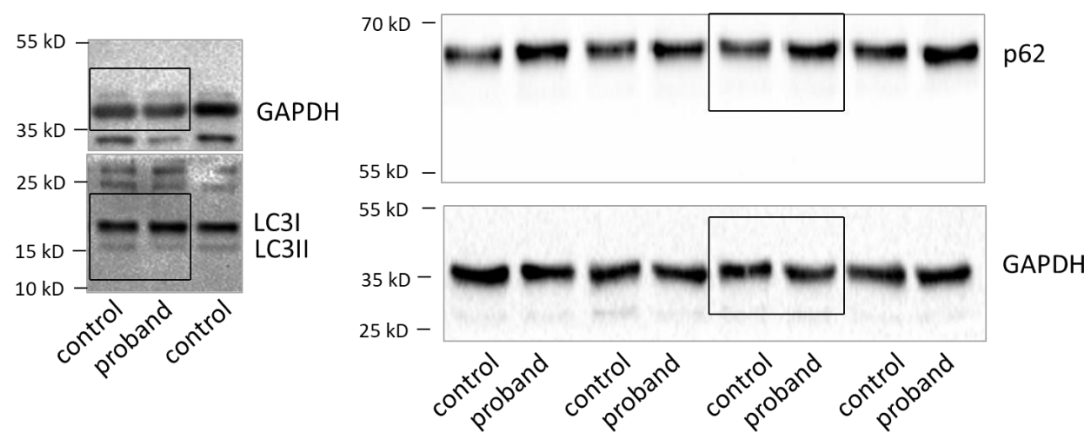
For figure 3D



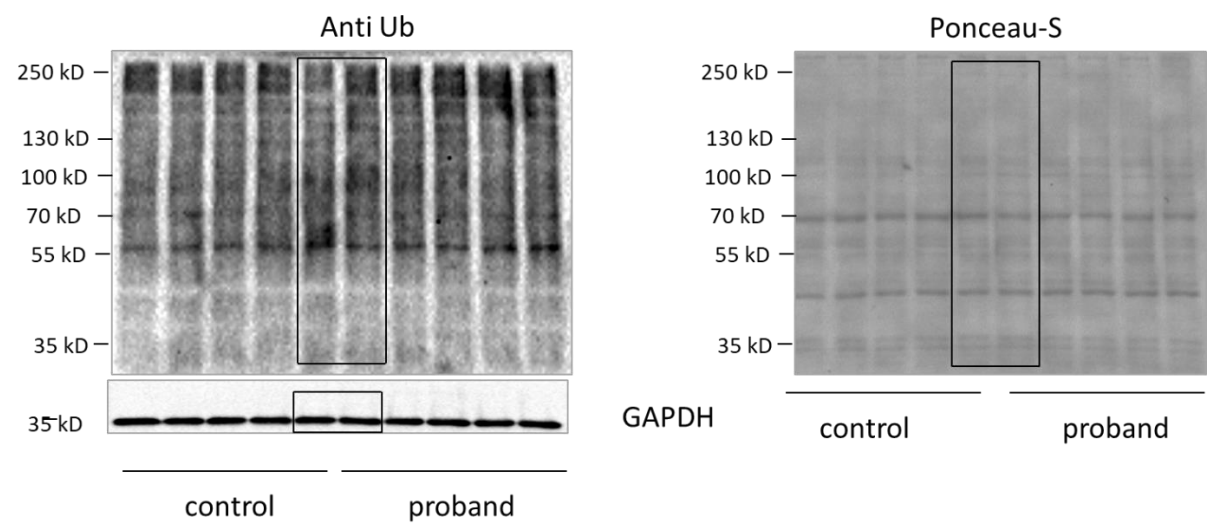
For figure 3E



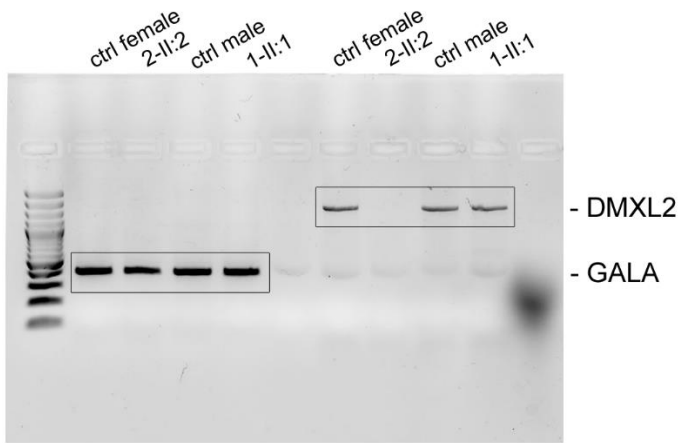
For Figure 4C



For figure 4D



For Figure S4



For Figure S9

