

SCORE2 risk prediction algorithms: new models to estimate 10-year risk of cardiovascular disease in Europe

SCORE2 working group and ESC Cardiovascular risk collaboration

Received 25 January 2021; revised 8 March 2021; editorial decision 4 May 2021; accepted 5 May 2021; online publish-ahead-of-print 13 June 2021

See page 2468 for the editorial comment on this article (doi: 10.1093/eurheartj/ehab310)

Aims

The aim of this study was to develop, validate, and illustrate an updated prediction model (SCORE2) to estimate 10-year fatal and non-fatal cardiovascular disease (CVD) risk in individuals without previous CVD or diabetes aged 40–69 years in Europe.

Methods and results

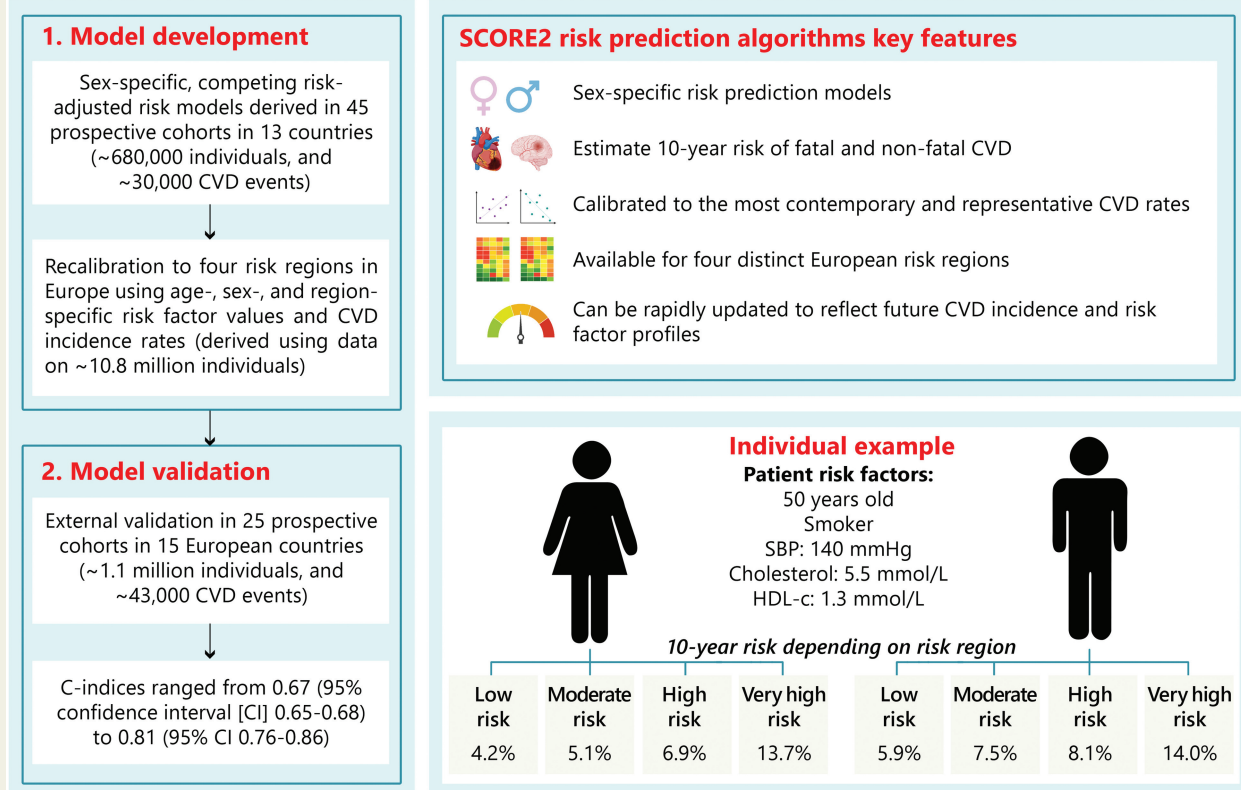
We derived risk prediction models using individual-participant data from 45 cohorts in 13 countries (677 684 individuals, 30 121 CVD events). We used sex-specific and competing risk-adjusted models, including age, smoking status, systolic blood pressure, and total- and HDL-cholesterol. We defined four risk regions in Europe according to country-specific CVD mortality, recalibrating models to each region using expected incidences and risk factor distributions. Region-specific incidence was estimated using CVD mortality and incidence data on 10 776 466 individuals. For external validation, we analysed data from 25 additional cohorts in 15 European countries (1 133 181 individuals, 43 492 CVD events). After applying the derived risk prediction models to external validation cohorts, C-indices ranged from 0.67 (0.65–0.68) to 0.81 (0.76–0.86). Predicted CVD risk varied several-fold across European regions. For example, the estimated 10-year CVD risk for a 50-year-old smoker, with a systolic blood pressure of 140 mmHg, total cholesterol of 5.5 mmol/L, and HDL-cholesterol of 1.3 mmol/L, ranged from 5.9% for men in low-risk countries to 14.0% for men in very high-risk countries, and from 4.2% for women in low-risk countries to 13.7% for women in very high-risk countries.

Conclusion

SCORE2—a new algorithm derived, calibrated, and validated to predict 10-year risk of first-onset CVD in European populations—enhances the identification of individuals at higher risk of developing CVD across Europe.

Graphical Abstract

SCORE2 risk prediction algorithms



Development process, key features and illustrative example of the SCORE2 risk prediction algorithms for European populations.

Keywords

Risk prediction • Cardiovascular disease • Primary prevention • 10-year CVD risk

Introduction

Cardiovascular diseases (CVD), which include coronary heart disease and stroke, are the most common fatal non-communicable diseases globally, responsible for an estimated 18.6 million deaths in 2019.^{1,2} Cardiovascular diseases remains a major cause of morbidity and mortality in Europe. The European Society of Cardiology (ESC) provides guidelines and advocates the use of risk prediction models to enhance healthcare and population-wide prevention.^{3,4} Risk models, which integrate information on several conventional CVD risk factors, typically estimate individual risk over a 10-year period. The goal is to identify people at higher risk of CVD who should benefit most from preventive action.

The ESC has convened an effort to revise its recommended risk prediction algorithm, known as the Systematic COronary Risk Evaluation (SCORE) model,⁵ to address inter-related needs. SCORE includes only

fatal CVD outcomes, meaning it underestimates total CVD burden, which in recent decades has shifted towards non-fatal outcomes, especially for younger people.¹ SCORE does not allow for substantial variations of risk across countries from the same risk region, meaning it may mis-estimate risk in these circumstances. SCORE was developed from cohorts recruited before 1986 and has not been systematically 'recalibrated' (i.e. statistically adapted) to contemporary CVD rates, meaning it is not ideal for use in contemporary European populations. Finally, risk prediction models recommended for other global regions,^{6,7} may not be readily applicable to European populations because they typically include risk factors not available in routine European data sources needed for risk model recalibration.^{6,8-10}

To address these limitations, we provide the development, validation, and illustration of SCORE2 to estimate 10-year fatal and non-fatal CVD risk in individuals in Europe without previous CVD or diabetes aged 40–69 years.

Methods

Study design

The SCORE2 project involved multiple data sources (Figure 1). First, to enable reliable estimation of age- and sex-specific relative risks, we derived prediction models for fatal and non-fatal CVD outcomes using individual-participant data from 45 prospective cohorts involving 677 684 participants in 13 countries. Second, to adapt risk prediction models to the circumstances of each European region, we recalibrated the derived risk models using estimated contemporary age- and sex-specific incidences and risk factor distributions. Third, to enhance validity and generalizability, we completed external validation using individual-participant data from a further 25 prospective cohorts (i.e. studies not in the model derivation) involving 1 133 181 individuals in 15 European countries. Fourth, to illustrate the variation of CVD risk across European regions, we applied the model to contemporary populations.

Data sources and procedures

For model derivation, we used individual-participant data from 44 cohorts included in the Emerging Risk Factor Collaboration (ERFC) and the UK Biobank (UKB).^{11,12} The ERFC has collated and harmonized individual-participant data from many long-term prospective cohort studies of CVD risk factors and outcomes. Prospective studies in the ERFC were included in this analysis if they met all the following criteria: had recorded baseline information on risk factors necessary to derive risk prediction models (age, sex, smoking status, history of diabetes mellitus, systolic blood pressure, and total- and HDL-cholesterol); were approximately population-based [i.e. did not select participants on the basis of having previous disease (e.g. case-control studies) and were not active treatment arms of intervention studies]; had a median year of baseline survey after 1990; and had recorded cause-specific deaths and/or non-fatal CVD events (i.e. non-fatal myocardial infarction or stroke) for at least 1-year of follow-up. The UKB is a single large prospective cohort study with individual-participant data on approximately 500 000 participants aged

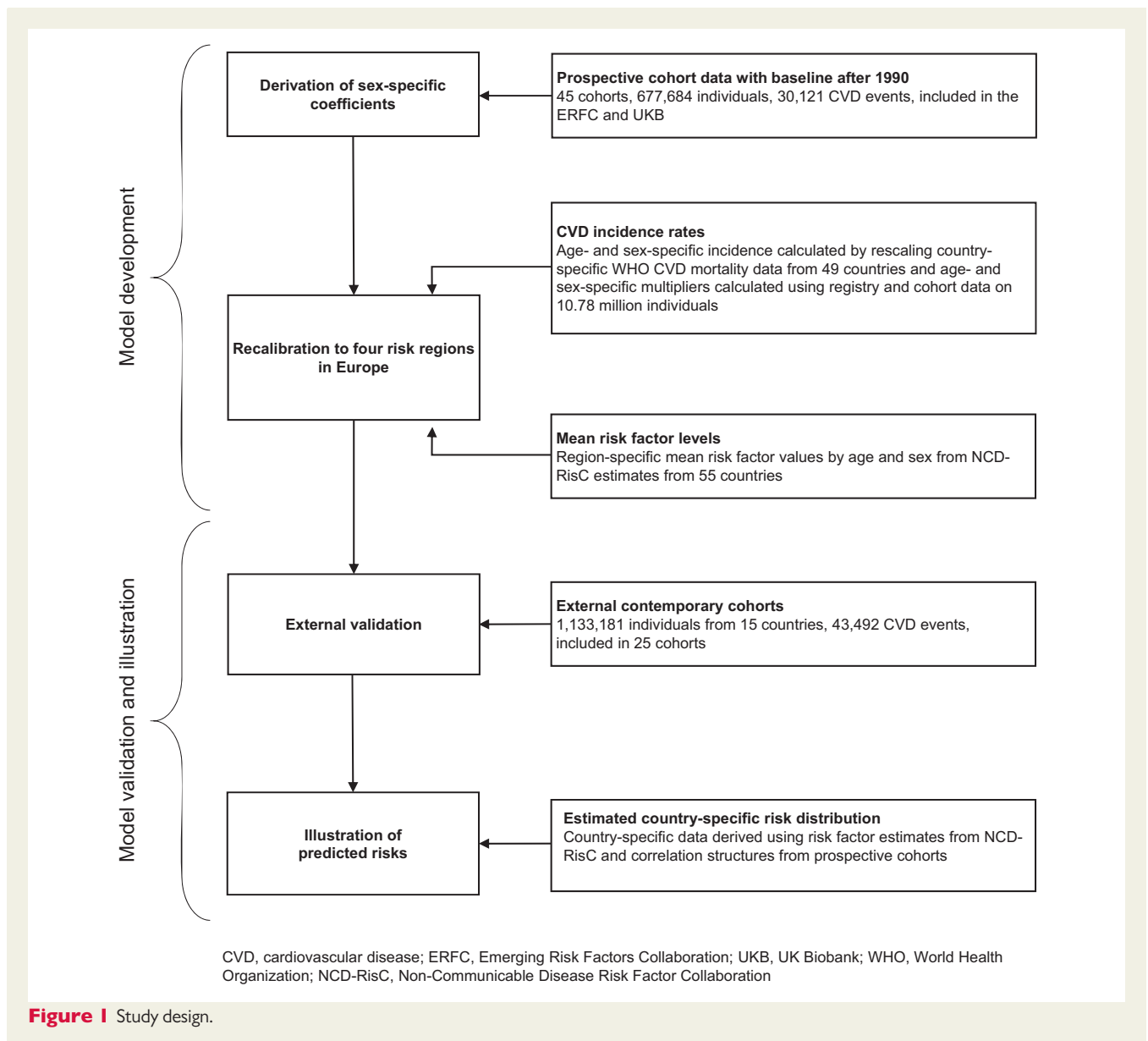


Figure 1 Study design.

>40 years recruited across 23 UK-based assessment centres during 2006–10, and followed-up for cause-specific morbidity and mortality through linkages to routinely available national datasets and disease-specific registers. Data selection for model derivation is shown in Supplementary material online, *Figure S1*. Details of contributing cohorts are provided in Supplementary material online, *Appendix S1* and *Table S1*.

For recalibration of models, we obtained country-specific CVD mortality rates reported by the World Health Organization (WHO),¹³ and estimated fatal and non-fatal CVD incidences by using age- and sex-specific multipliers. Multipliers were derived in the Clinical Practice Research Datalink (CPRD),¹⁴ the Finnish CVD register,¹⁵ the Swedish population data (linked to the Swedish National Inpatient and cause of death registries),¹⁶ the Estonian Biobank,¹⁷ and the Health, Alcohol and Psychosocial factors In Eastern Europe (HAPIEE) study.¹⁸ Details of these data sources are provided in Supplementary material online, *Table S2* and *Appendix S1*. Age- and sex-specific risk factor values were obtained from the Non-Communicable Disease Risk Factor Collaboration (NCD-RisC).^{19,20} The incidence rates predicted by the recalibrated models for low- and moderate-risk regions were then compared with 2018 incidence rates as reported in national registry data from the Netherlands, Denmark, UK, Germany, and Spain (Supplementary material online, *Table S3*).

For external validation of models, we included prospective cohort studies if they met the following criteria: did not contribute to the model derivation; met the same criteria as for the cohorts selected from the ERFC for the model derivation stage; and made individual-participant data available to our working group. The following consortia and individual studies were used for external validation: the MOnica Risk, Genetics, Archiving and Monograph (MORGAM) project,²¹ the Biomarker for Cardiovascular Risk Assessment in Europe (BiomarCaRE) consortium,²² the European Prospective Investigation into Cancer and Nutrition—cardiovascular disease (EPIC-CVD),²³ CPRD,¹⁴ Heinz-Nixdorf Recall study (HNR),²⁴ Estonian Biobank,¹⁷ HAPIEE study,¹⁸ HUNT study,²⁵ DETECT study,²⁶ and Gutenberg Health Study (GHS).²⁷ Details of these cohorts are provided in the Supplementary material online, *Appendix S1* and *Table S4*.

The primary outcome was CVD, defined as a composite of cardiovascular mortality, non-fatal myocardial infarction and non-fatal stroke. The CVD mortality component of the primary outcomes corresponds to the endpoint definition of the original SCORE model and includes death due to coronary heart disease, heart failure, stroke, and sudden death.⁵ Follow-up was until the first non-fatal myocardial infarction, non-fatal stroke, death, or end of the registration period. Deaths from non-CVD causes were treated as competing events. Details of the different ICD-10 codes included in both the fatal and non-fatal components of the endpoint are provided in Supplementary material online, *Table S5*.

Statistical analysis

Details of statistical analysis are provided in Supplementary material online, *Methods*. For model derivation, sex-specific associations [i.e. subdistribution hazard ratios (SHRs)] were estimated using Fine and Gray competing risk-adjusted models stratified by cohort. The sex-specific models included the following predictors: age, current smoking, history of diabetes mellitus, systolic blood pressure, and total- and HDL-cholesterol. The risk factors were selected due to their predictive ability as well as their availability in: derivation cohorts, target populations for screening, and population statistics needed for model recalibration. Since previous research showed that associations of these risk factors with CVD decline with increasing age, age-interactions were added for all predictors.²⁸ To maximize statistical power when estimating age-interactions, risk models were derived in participants aged 40–79 years at baseline without previous CVD. However, SCORE2 risk models are intended for use in people aged 40–69 years. In a parallel initiative, a risk

score for individuals aged over 70, SCORE2-OP, has been developed using similar methods.²⁹ While the SCORE2 risk models are not intended for use in individuals with diabetes, participants with a history of diabetes were included at the model derivation stage (with appropriate adjustment for diabetes status), since it wasn't possible to exclude people with diabetes from population-level mortality statistics and risk factor data used in recalibration. There were no (or only very minimal) violations of the proportional hazards assumptions. Meta-regression was used to assess temporal and geographical heterogeneity.

Risk models were recalibrated to risk regions using age- and sex-specific mean risk factor levels and CVD incidence rates.³⁰ All European countries were grouped into four risk regions according to their most recently reported WHO age- and sex-standardized overall CVD mortality rates per 100 000 population (ICD 10 chapters IX, I00-I99).¹³ The four groupings were low risk (<100 CVD deaths per 100 000), moderate risk (100 to <150 CVD deaths per 100 000), high risk (150 to <300 CVD deaths per 100 000), and very high risk (≥ 300 CVD deaths per 100 000) (*Figure 2* and Supplementary material online, *Table S6*). Incidence rates were estimated by rescaling region-specific CVD mortality rates, by derived age-, sex-, and region-specific multipliers, estimated in contemporary representative cohorts from each region (Supplementary material online, *Table S2*). We assessed discrimination using external validation cohorts by calculating Harrell's C-index, adjusted for competing risks,³¹ and in the case of EPIC-CVD weighting according to the case-cohort structure of the data.³² Comparison of SCORE2 and SCORE in relation to discrimination and calibration was performed in CPRD, as the only nationally representative data source with both risk factor and outcome information available at the individual-participant level. To compare the proportion of the population at different levels of CVD event risk according to the SCORE2 models, predicted risk distributions were simulated using age- and sex-specific risk factor value means and prevalences from NCD-RisC and correlation structures observed in ERFC cohorts.

Approaches used to handle missing data are described in the Supplementary material online, *Methods*. We adopted analytical approaches and reporting standards recommended by the PROBAST guidelines³³ and TRIPOD.³⁴ Analyses were performed with R-statistic programming (version 3.5.2, R Foundation for Statistical Computing, Vienna, Austria) and Stata (version 15.1, StataCorp, College Station, TX, USA). The study was designed and completed by the SCORE2 Working Group in collaboration with the ESC Cardiovascular Risk Collaboration, the ERFC academic co-ordinating centre, and the MORGAM and BiomarCaRE co-ordinating centres. Data used for the current study are available upon reasonable request and approval of the individual cohorts or collaborative groups, please contact the individual cohorts used for the current study for details. Stata code for calculation of the SCORE2 algorithms is available on request from authors.

Results

Model derivation involved 677 684 participants from 45 cohorts without previous CVD recruited between 1990 and 2009. Mean age at recruitment was 57 (SD 9) years, 300 735 (44%) were male (*Table 1*). During median follow-up of 10.7 (5th, 95th percentile; 5.0, 18.6) years, a total of 30 121 CVD events and 33 809 non-CVD deaths were recorded. Subdistribution hazard ratios are shown in Supplementary material online, *Table S7*. The strength of associations of model predictors decreased with older age of participants (Supplementary material online, *Figure S2*). Associations of smoking and diabetes mellitus with CVD were stronger in women than men. Calibration and 'goodness of fit' for the prediction models were

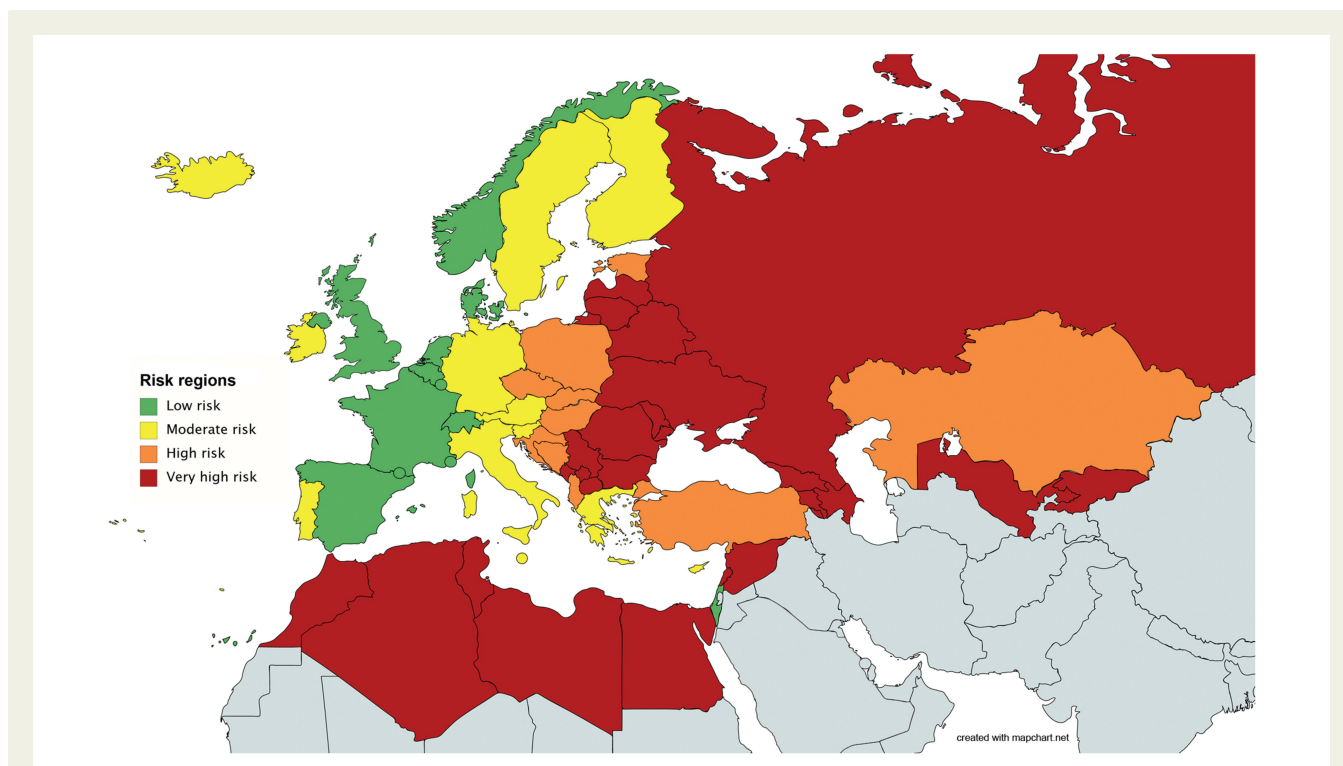


Figure 2 Risk regions based on standardised cardiovascular disease mortality rates. Countries were grouped into four risk regions according to their most recently reported WHO age- and sex-standardized overall CVD mortality rates per 100,000 population (ICD chapters 9, I00-I99). The four groupings were: low risk (<100 CVD deaths per 100,000), moderate risk (100 to <150 CVD deaths per 100,000), high risk (150 to <300 CVD deaths per 100,000), and very high risk (≥ 300 CVD deaths per 100,000).

Table 1 Summary of available data used in SCORE2 risk model derivation

	N (%) or mean (SD)
Total participants	677 684
Male sex	300 735 (44%)
Age (years)	57 (9)
Current smoker	101 211 (15%)
Systolic blood pressure (mmHg)	136 (19)
Diabetes mellitus	31 413 (5%)
Total cholesterol (mmol/L)	5.8 (1.1)
HDL-cholesterol (mmol/L)	1.4 (0.4)
Follow-up (years, median (5th/95th percentile))	10.7 (5.0–18.6)
Cardiovascular events	30 121
Non-cardiovascular deaths	33 809

reasonable within the derivation dataset, both overall and in region-specific and in time period-specific analyses. The C-index in the derivation dataset was 0.739 (95% CI 0.736–0.741). Results were similar in sensitivity analyses that omitted UKB, or excluded studies with information only on fatal events (Supplementary material online, Table

S8). Similar SHRs were also found in analyses of the MORGAM/ BiomarcARE consortium (Supplementary material online, Table S9).

Regional sex- and age-specific multipliers for conversion of CVD mortality rates to incidence rates involved 5 256 013 men and 5 520 453 women, with 731 265 CVD events recorded during follow-up (Supplementary material online, Table S2). Multipliers were similar over calendar time, and across different data sources within each risk region, but decreased with age, were somewhat greater in women than men, and were lower in the high-/very high-risk regions compared with low-/moderate-risk regions (Supplementary material online, Table S10 and Figures S3–S5). Age- and sex-specific mean risk factor levels used for recalibration are presented by region in Supplementary material online, Figure S6. Age- and sex-specific 10-year mortality CVD rates and derived incidence rates are shown for each region in Supplementary material online, Figures S7 and S8. After recalibration, the SCORE2 predicted risks based on mean risk factor levels showed good agreement with the estimated CVD event incidence (Supplementary material online, Figure S9) and with incidence rates obtained from external national registries (Supplementary material online, Figure S10).

The SCORE2 charts for CVD risk estimation in four European risk regions are shown in the Figure 3. For practical and presentational purposes, the charts are displayed according to non-HDL-cholesterol rather than total cholesterol and HDL-cholesterol. The estimated absolute risk for a given age and combination of risk factors differed substantially across regions. For example, the estimated 10-

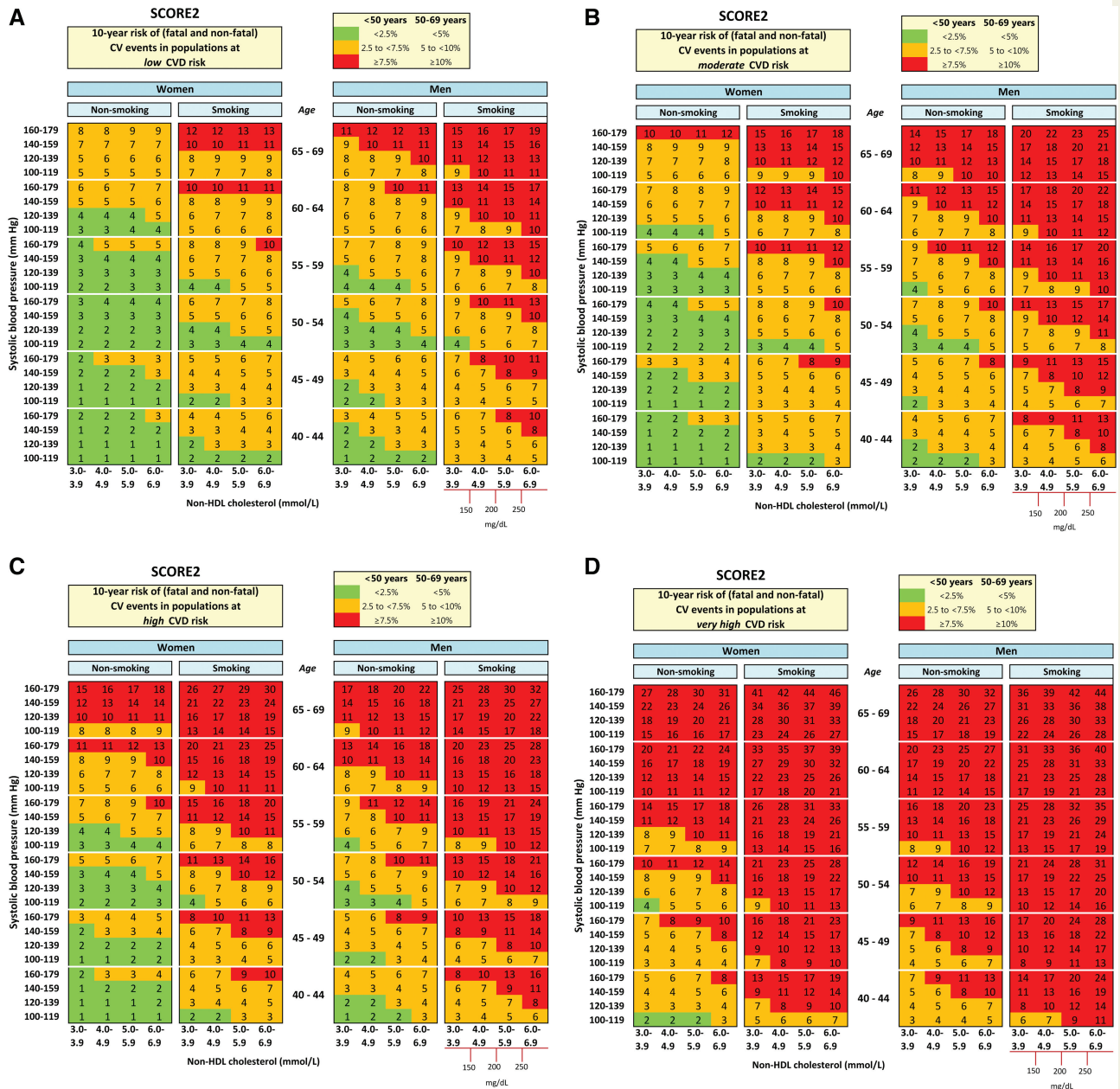


Figure 3 SCORE2 charts for estimation of CVD risk in four European risk regions.

year CVD risk for a 50-year-old male smoker and with a systolic blood pressure of 140 mmHg, total cholesterol of 5.5 mmol/L and HDL-cholesterol of 1.3 mmol/L, ranged from 5.9% in low-risk countries to 14.0% in very high-risk countries. Similarly, the 10-year risk for a 50-year-old woman with the same risk factor profile ranged from 4.2% in low-risk countries to 13.7% in very high-risk countries (Supplementary material online, *Figure S11*).

External validation of risk models involved calculation of C-indexes using data from 1 133 181 individuals without previous CVD or diabetes in 25 prospective studies from 15 European countries (43 492 CVD events were observed). C-indices showed moderate-to-good discrimination in all regions (*Figure 4*), with cohort-specific

values ranging from 0.67 (0.65–0.68) to 0.81 (0.76–0.86). In comparison to SCORE, SCORE2 improved overall risk discrimination (difference in C-index: 0.0100, 95% CI 0.0085, 0.0115; $P < 0.001$), particularly at younger ages (difference in C-index at ages 40–50 years: 0.0213, 95% CI 0.0162, 0.0265; $P < 0.001$), and for non-fatal CVD outcomes (difference in C-index: 0.0113, 95% CI 0.0097, 0.0130; $P < 0.001$; Supplementary material online, *Tables S11* and *S12* and *Figure S12*). Removing the contribution of total and HDL-cholesterol from SCORE2 model reduced C-index by 0.0078 (95% CI 0.0064, 0.0091), providing context for the C-index improvement of 0.01 observed in using SCORE2 rather than SCORE. To directly compare SCORE and SCORE2, we converted fatal CVD

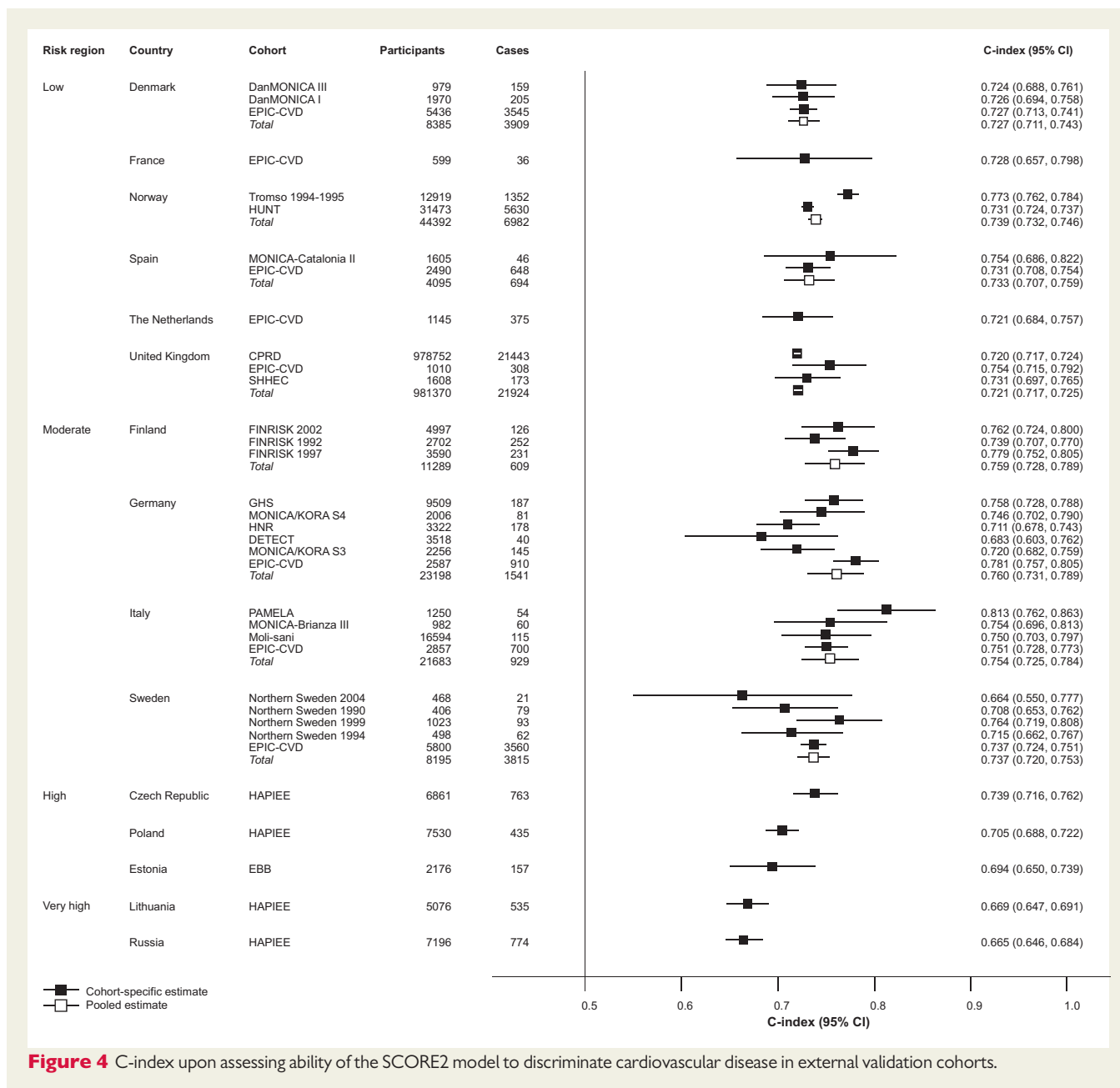


Figure 4 C-index upon assessing ability of the SCORE2 model to discriminate cardiovascular disease in external validation cohorts.

risk estimated using SCORE to fatal and non-fatal CVD risk using the approach recommended by the 2019 ESC/EAS Guidelines for the Management of Dyslipidaemias (i.e. to multiply estimates by 3 in men and by 4 in women), showing SCORE2 outperformed SCORE by avoiding over-estimation of risk (Supplementary material online, *Figure S13*) and by appropriately classifying as high-risk individuals with higher observed lifetime CVD risk (Supplementary material online, *Figure S14*).

When we applied recalibrated SCORE2 models to simulated data representing populations from each risk region, the proportion of individuals aged 40–69 years with an estimated risk greater than 10% varied by region, from 3.4% in the low-risk region to 51% in the very high-risk region in men and from 0.1% to 32%,

respectively, in women, with these proportions increasing with age, as would be expected (*Figure 5* and Supplementary material online, *Figure S15*).

Discussion

We have developed SCORE2, an updated algorithm tailored to European populations to predict 10-year risk of first-onset CVD (*Graphical Abstract*). By updating SCORE in several aspects, the use of SCORE2 will enhance the identification of individuals at higher risk of developing CVD across Europe.

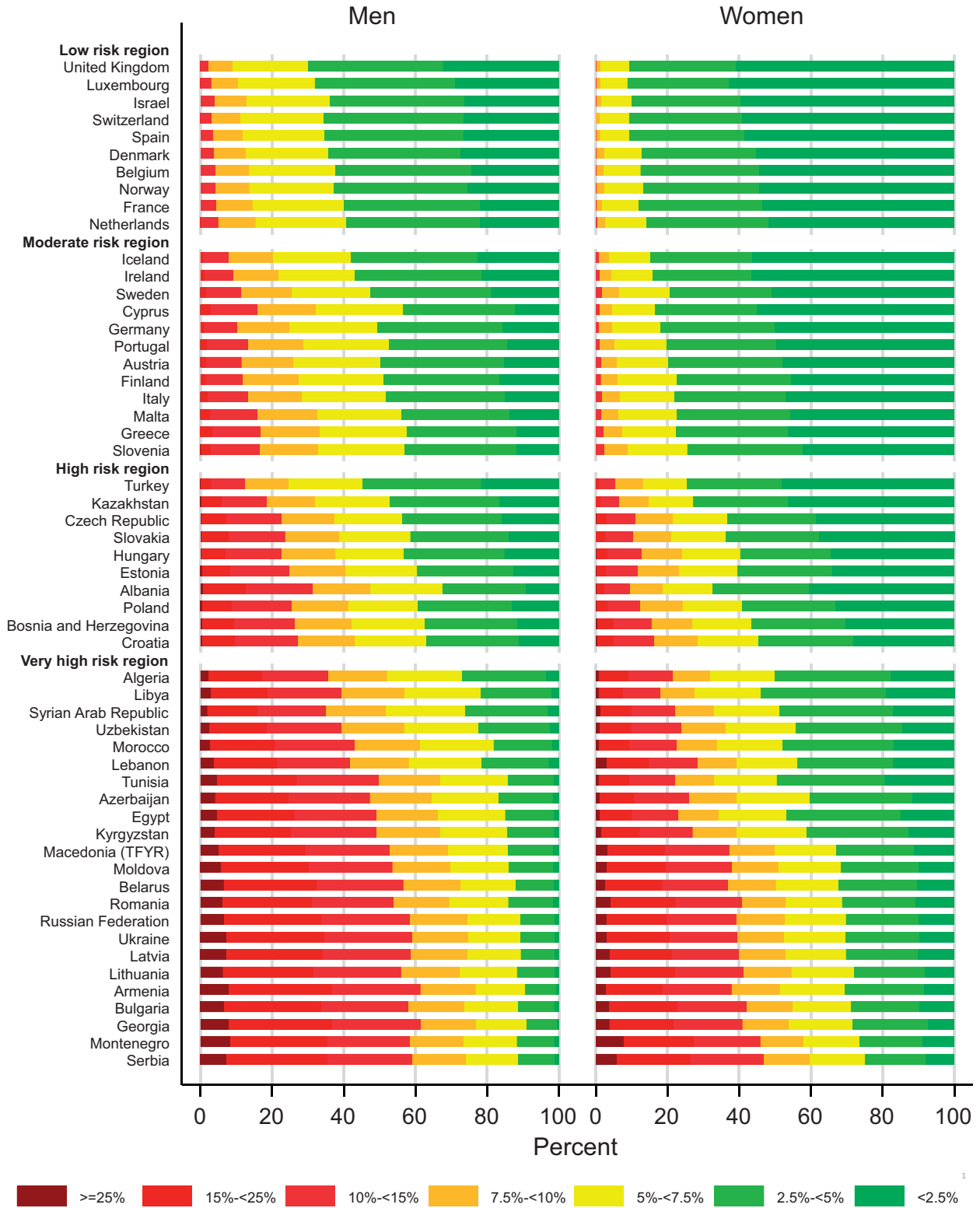


Figure 5 Distribution of 10-year cardiovascular disease risk according to recalibrated SCORE2 models across European countries. The proportion of individuals expected in each risk category was estimated to reflect the age-group and sex-specific risk factor values and specific population structure of each country (Supplementary material online, *Methods 1.3*).

First, SCORE2 provides risk estimates for the combined outcome of fatal and non-fatal CVD events, in contrast with SCORE's use of CVD mortality only. Furthermore, SCORE2 has been systematically recalibrated, using the most contemporary and representative CVD rates available, whereas the original SCORE model was based on data collected before 1986. Although it would have been possible to recalibrate SCORE to contemporary CVD mortality rates, CVD mortality-only risk models underestimate total risk, particularly when the case-fatality rates are lower (as in younger individuals). Our results suggest that SCORE2 better estimates the total burden of CVD, particularly among younger individuals, as well as showing better risk discrimination, than SCORE.

Second, SCORE2 accounts for the impact of competing risks by non-CVD deaths whereas SCORE did not do so. This statistical adjustment prevents over-estimation of CVD risk and over-estimation of the benefit of treatment in populations where the risk of competing non-CVD deaths is high. For example, this adjustment should predominantly benefit treatment decisions in older individuals, and those from high- or very high-risk regions.

Third, the recalibration of SCORE2 to four distinct European regions defined by varying CVD risk levels improves on the two-level regional stratification provided by SCORE.⁵ Furthermore, as the recalibration used for SCORE2 avoids reliance on sparse cohort or country-level data, it provides recalibrated calculators tailored to sex-specific CVD rates and risk factor levels of each region. Because the recalibration approach we used is based on registry data, the model can be readily updated to reflect future disease CVD incidence and risk factor profiles of any target population of apparently healthy individuals to be screened.^{28,29} This means that if descriptive age- and sex-specific epidemiological data are available from individual European countries (or within-country regions), they can be readily incorporated to revise models at a country level.⁴

Fourth, the derivation, calibration, validation, and illustration of SCORE2 have been underpinned by exceptionally powerful, extensive, and complementary datasets of contemporary relevance to European populations. These features enhance the accuracy, generalizability, and validity of the approach. In particular, SCORE2 was developed using data on a total of more than 12.5 million individuals from dozens of countries.

Fifth, our project illustrated the performance of SCORE2 with data estimated from all European countries, showing that the proportions of individuals in specific risk categories seem to differ across countries. This diversity highlights why policymakers and practitioners need tailored tools like SCORE2 to help make more appropriate and locally informed decisions about the allocation of prevention resources.

The potential limitations of this effort merit consideration. We derived risk prediction models from 45 cohorts, mostly in European regions and populations at low- or moderate-risk CVD risk. Ideally, however, the derivation of risk models for use in high and very high-risk countries would have involved large nationally representative, prospective cohorts in these countries, coupled with prolonged follow-up and validation of fatal and non-fatal CVD endpoints. Unfortunately, such data do not yet generally exist. Indeed, even in low- and moderate-risk regions, the cohorts involved may not be nationally representative, reflecting past periods of time or self-selected participants such as healthy volunteers.³⁵ While healthy volunteer

bias can lead to low estimates of absolute risk, relative risks are generally unaffected.³⁶ Furthermore, our approach makes the assumption that the relative risks obtained in the derivation dataset are transferable across different populations, as evidenced by broadly similar relative risk and good discrimination in external validation populations in all regions. We then recalibrated models using nationally representative incidence rates from all regions, an important step not commonly considered by other CVD risk scores, avoiding the limitations of mis-calibration provided by potentially non-representative incidence rates in cohort studies.^{6,8,9}

Data on medication use, family history, socio-economic status, nutrition, physical activity, renal function, or ethnicity were not available in cohorts and registries used for model derivation and recalibration. Hence, interpretation of SCORE2 estimates may require clinical judgement, especially for individuals in whom these factors may be relevant (e.g. those taking lipid or blood pressure-lowering treatments,³⁷ with a family history of CVD,³⁸ with chronic kidney disease,³⁹ or in at-risk socio-economic and ethnic groups³⁸). In addition, some individuals in our model derivation cohorts may have initiated preventative treatment (e.g. statin) during follow-up and accounting for this could improve model calibration and discrimination. However, previous analyses have suggested that inclusion of information on statin-initiation during follow-up provides only limited clinical and public health benefit.⁴⁰ We did not compare the performance of SCORE2 models with other risk equations already developed for use in specific high-income countries because these equations contain variables often not available in European datasets used for derivation and recalibration. However, previous analyses have suggested that only minor differences exist in risk discrimination among guideline-recommended risk prediction models. In contrast, the clinical performance of risk prediction models depends importantly on differing ability to predict the correct level risk in the target population (i.e. extent of 'calibration').³⁰ We, therefore, ensured SCORE2 was well-calibrated to current absolute risk levels for each European region by adapting the model to contemporary CVD incidence rates. We did not assess calibration of SCORE2 in our external validation cohorts other than the large nationally representative dataset from the CPRD, because these cohorts do not necessarily reflect contemporary absolute risk levels across European regions. We did not include diabetes as a risk predictor in SCORE2 as individuals with diabetes are generally considered at high risk of CVD (and, therefore, automatically eligible for statin medications and other preventive interventions), and specific risk scores already exist for this population.^{41,42} For individuals over the age of 70, a separate risk score, SCORE2-OP, has been derived and published in parallel with the SCORE2 initiative using similar methods.²⁹ The SCORE2-OP risk estimation can be used as a continuum to the SCORE2 estimates. However, some small differences may be expected when estimating risks in individuals around the age of 70 years.

To recalibrate SCORE2 to the target European populations, we used CVD mortality rates provided by the WHO, rescaled to estimate CVD event incidence rates, based on multipliers derived from representative cohort studies or national registries from three of the four risk regions we defined in Europe. For the very high-risk region, we did not have suitable data for deriving the multipliers, and

therefore applied the same multipliers as for the high-risk region. Our approach assumes that CVD mortality rates provided by WHO are representative of each country, and that multipliers are valid across countries within the same region, an assumption that is difficult to test due to the lack of available incidence data in particular in the high- and very high-risk regions. However, we observed that multipliers were similar across available studies from the same region and over calendar time, suggesting that they are stable despite differences in CVD event rates. Furthermore, estimated CVD rates agreed well with national incidence rates from available independent external registries. Our risk models might have underestimated CVD risk because data used to estimate multipliers were likely to include some people already on CVD prevention therapies (e.g. statins or anti-hypertensive medication), but available data were insufficient to evaluate this possibility. As we have not evaluated SCORE2 in non-European populations, its value in such settings is not entirely known. Finally, further studies should assess the value of longer-term risk prediction (especially in younger individuals),⁴⁰ understand barriers to implementations,⁴³ and define the role of using CVD risk prediction models in primary CVD prevention.^{44,45}

In summary, SCORE2, a new algorithm derived, calibrated, and validated to predict 10-year risk of first-onset CVD in European populations, enhances the identification of individuals at higher risk of developing CVD across Europe.

Supplementary material

Supplementary material is available at *European Heart Journal* online.

Acknowledgements

We thank investigators and participants of the several studies that contributed data to the Emerging Risk Factors Collaboration (ERFC).

This research has been conducted using the UK Biobank Resource under Application Number 26865.

Data from the Clinical Practice Research Datalink (CPRD) were obtained under licence from the UK Medicines and Healthcare products Regulatory Agency (protocol 162RMn2). CPRD uses data provided by patients and collected by the NHS as part of their care and support.

We thank all EPIC participants and staff for their contribution to the study, the laboratory teams at the Medical Research Council Epidemiology Unit for sample management and Cambridge Genomic Services for genotyping, Sarah Spackman for data management and the team at the EPIC-CVD Coordinating Centre for study co-ordination and administration.

Funding

The ERFC co-ordinating centre was underpinned by programme grants from the British Heart Foundation (SP/09/002; RG/13/13/30194; RG/18/13/33946), BHF Centre of Research Excellence (RE/18/1/34212), the UK Medical Research Council (MR/L003120/1), and the National Institute for Health Research (NIHR) Cambridge Biomedical Research Centre (BRC-1215-20014), with project-specific support received from the UK NIHR [*,], British United Provident Association UK Foundation and an unrestricted educational grant from GlaxoSmithKline. A variety of funding sources have supported recruitment, follow-up, and laboratory

measurements in the studies contributing data to the ERFC, which are listed on the ERFC website (www.phpc.cam.ac.uk/ceu/erfc/list-of-studies).

*The views expressed are those of the author(s) and not necessarily those of the NIHR or the Department of Health and Social Care.

This work was supported by Health Data Research UK, which is funded by the UK Medical Research Council, Engineering and Physical Sciences Research Council, Economic and Social Research Council, Department of Health and Social Care (England), Chief Scientist Office of the Scottish Government Health and Social Care Directorates, Health and Social Care Research and Development Division (Welsh Government), Public Health Agency (Northern Ireland), British Heart Foundation, and Wellcome.

The MORGAM Project has received funding from EU projects MORGAM (Biomed BMH4-CT98-3183), GenomEUtwin (FP5, QL2-CT-2002-01254), ENGAGE (FP7, HEALTH-F4-2007-201413), CHANCES (FP7, HEALTH-F3-2010-242244), BiomarCaRE (FP7, HEALTH-F2-2011-278913), euCanSHare (Horizon 2020, No. 825903) and AFFECT-EU (Horizon 2020, No. 847770); and Medical Research Council, London (G0601463, No. 80983: Biomarkers in the MORGAM Populations). This has supported central coordination, workshops and part of the activities of the MORGAM Data Centre, the MORGAM Laboratories and the MORGAM Participating Centres

EPIC-CVD was funded by the European Research Council (268834), and the European Commission Framework Programme 7 (HEALTH-F2-2012-279233).

This work was supported by the Estonian Research Council grant PUTs (PRG687, PUT1660, PUT1665, PRG184), by European Union through the European Regional Development Fund project no. MOBERA5 (Norface Network project no 462.16.107), by the Green ICT programme under Norway Grants 2014 – 2021 (grant number EU53928), by the European Union through Horizon 2020 grant no. 810645 and through the European Regional Development Fund (Project No. 2014-2020.4.01.16-0125) and by the PRECISE4Q consortium. PRECISE4Q project has received funding from the European Union's Horizon 2020 Research and Innovation Programme under Grant agreement 777107. This work was partly funded through the CoMorMent project. CoMorMent has received funding from the European Union's Horizon 2020 Research and Innovation Programme under Grant agreement 847776.

The KORA study was initiated and financed by the Helmholtz Zentrum München—German Research Center for Environmental Health, which is funded by the German Federal Ministry of Education and Research (BMBF) and by the State of Bavaria. The KORA study was supported by a research grant from the Virtual Institute of Diabetes Research (Helmholtz Zentrum München), the Clinical Cooperation Group Diabetes between Ludwig-Maximilians-Universität München and Helmholtz Zentrum München, and by the German Diabetes Center (DDZ).

The HAPIEE project, Institute, was supported by grants from the Wellcome Trust (064947/Z/01/Z; WT081081) and US National Institute on Aging (1R01 and AG23522).

The co-ordination of EPIC is financially supported by International Agency for Research on Cancer (IARC) and also by the Department of Epidemiology and Biostatistics, School of Public Health, Imperial College London, which has additional infrastructure support provided by the NIHR Imperial Biomedical Research Centre (BRC). The national cohorts are supported by: Danish Cancer Society (Denmark); Ligue Contre le Cancer, Institut Gustave Roussy, Mutuelle Générale de l'Éducation Nationale, Institut National de la Santé et de la Recherche Médicale (INSERM) (France); German Cancer Aid, German Cancer Research Center (DKFZ), German Institute of Human Nutrition Potsdam Rehbruecke (DIfE), Federal Ministry of Education and Research (BMBF) (Germany); Associazione Italiana per la Ricerca sul Cancro-AIRC-Italy, Compagnia di SanPaolo and National Research Council (Italy); Dutch

Ministry of Public Health, Welfare and Sports (VWS), Netherlands Cancer Registry (NKR), LK Research Funds, Dutch Prevention Funds, Dutch ZON (Zorg Onderzoek Nederland), World Cancer Research Fund (WCRF), Statistics Netherlands (The Netherlands); Health Research Fund (FIS)—Instituto de Salud Carlos III (ISCIII), Regional Governments of Andalucía, Asturias, Basque Country, Murcia and Navarra, and the Catalan Institute of Oncology—ICO (Spain); Swedish Cancer Society, Swedish Research Council and County Councils of Skåne and Västerbotten (Sweden); Cancer Research UK (14136 to EPIC-Norfolk; C8221/A29017 to EPIC-Oxford), Medical Research Council (1000143 to EPIC-Norfolk; MR/M012190/1 to EPIC-Oxford) (United Kingdom).

Conflict of interest: A.S.B. reports institutional grants from AstraZeneca, Bayer, Biogen, BioMarin, Bioverativ, Novartis, Regeneron, and Sanofi. A.W. reports support from an Alan Turing Institute/British Heart Foundation grant. A.T. reports payments made to her or her institution from World Cancer Research Fund, Independent Research Fund Denmark, and Danish Cancer Society. A.T. reports consulting fees from Akcea, AstraZeneca, Draupnir Bio, Novartis, Regeneron, Sanofi, Silence Therapeutics, and Payment or honoraria for lectures, presentations, speakers bureaus, manuscript writing or educational events from Akcea, Novartis, and Sanofi. B.J. reports support from European Union. B.G.N. reports consulting fees from AstraZeneca, Sanofi, Regeneron, Akcea, Amgen, Kowa, Denka, Amarin, Novartis, Novo Nordisk, Esperion, Silence and Payment or honoraria for lectures, presentations, speakers bureaus, manuscript writing or educational events from AstraZeneca, Sanofi, Regeneron, Akcea, Amgen, Kowa, Denka, Amarin, Novartis and Participation on a Data Safety Monitoring Board or Advisory Board for AstraZeneca, Sanofi, Regeneron, Akcea, Amgen, Kowa, Denka, Amarin, Novartis, Novo Nordisk, Esperion, Silence. B.A.F. reports Grants or contracts from Novartis, Amgen, Esperion, and Payment or honoraria for lectures, presentations, speakers bureaus, manuscript writing, or educational events from Merck, Amgen, Novartis, Regeneron, Sanofi, Pfizer, Eli Lilly, Novo Nordisk, The Medicines Co, Mylan, Daiichi Sankyo, Silence Therapeutics, Ionis Pharmaceuticals, dalCOR, CiVi Pharma, KrKa, ESC, EAS, ACC and Participation on a Data Safety Monitoring Board or Advisory Board Amgen, Novartis, Sanofi, Regeneron, Merck, Pfizer, Medicines Co., Mylan, Daiichi Sankyo, dalCOR, Silence, New Amsterdam. B.M. P. reports NIH grants acknowledged in the paper and he serves on the Steering Committee of the Yale Open Data Access Project funded by Johnson & Johnson. C.C. reports Consulting fees from Bayer, Payment or honoraria for lectures, presentations, speakers bureaus, manuscript writing, or educational events from Boehringer Ingelheim, Pfizer, Roche Diagnostis, Bayer and Support for attending meetings and/or travel from Astra. C.W. reports Research grant to institution from Pfizer and Payment or honoraria for lectures, presentations, speakers bureaus, manuscript writing, or educational events from Amgen, Daiichi Sankyo, Sanofi, Novartis and Participation on a Data Safety Monitoring Board or Advisory Board from Daiichi Sankyo. C.C. reports lecture fees and honoraria from Amgen, Danone, Eli Lilly, GSK, Kyowa Kirin, Medtronic, Merck, Nestlé, Novartis, Pfizer, Roche, Servier, Shire, Takeda and UCB outside of the submitted work. D.C.M. reports Grant paid to institution from Cancer Research UK and NIH/NCI. H.P. reports support from the Wellcome Trust, the US National Institute of Aging, MacArthur Foundation. J.D. reports grants, personal fees and non-financial support from Merck Sharp & Dohme (MSD), grants, personal fees and non-financial support from Novartis, grants from Pfizer and grants from AstraZeneca outside the submitted work. J.W.J. received research grants from and/or was speaker on meetings sponsored by Amgen, Athera, Astra-Zeneca, Biotronik, Boston Scientific, Dalcor, Daiichi Sankyo, Lilly, Medtronic, Merck-Schering-Plough, Novartis, Pfizer, Roche, sanofi-aventis, the Medicine Company, the Netherlands Heart Foundation,

CardioVascular Research the Netherlands, the Netherlands Heart Institute, and the European Community Framework KP7 Programme. K.M. reports support from NIH Research funding. L. P. reports British Heart Foundation Grant paid to the University of Cambridge. M.-C.B.-R. reports Payment or honoraria for lectures, presentations, speakers bureaus, manuscript writing, or educational events by Mayoli-Spindler Giléad. M.W. reports consulting fees from Amgen, Kyowa Kirin, and Freeline. M.B. reports support from the Wellcome Trust f, and US National Institute on Aging. M.H. reports consulting fees for Medical Park Holding, Germany and Payment or honoraria for lectures, presentations, speakers bureaus, manuscript writing, or educational events from Abbott, Roche, and Leadership or fiduciary role in other board, society, committee or advocacy group, paid or unpaid from President European Association of Preventive Cardiology. N.S. reports support from British Heart Foundation Research Excellence Award Payments made to institution, grants from Boehringer Ingelheim Payments made to institution, Consulting fees from Amgen, AstraZeneca, Boehringer Ingelheim, Eli Lilly, Merck Sharp & Dohme, Novartis, Novo Nordisk, Pfizer, Sanofi and Payment or honoraria for lectures, presentations, speakers bureaus, manuscript writing, or educational events Amgen, AstraZeneca, Boehringer Ingelheim, Eli Lilly, Novo Nordisk, and Sanofi. P.E.V. reports Consulting fees from Servier International, Hygeia Hospitals Groups, and European Society of Cardiology. P.M.R. reports grants from NHLBI, Novartis, Amarin, Pfizer, Kowa, the Brigham and Women's Hospital, and consulting fees Corvidia, Novartis, Flame, Agepha, Inflazome, AstraZeneca, Janssen, Civi Biopharm, SOCAR, Novo Nordisk, Upton, and Omeicos, and Boehringer Ingelheim for Consulting. P.W. reports grants from Austrian Science Fund, Dr Johannes and Hertha Tuba Foundation. P.S.W. reports grants from Boehringer Ingelheim, sanofi-aventis, Philips Medical Systems, Bayer Health Care, Bayer Vital, Daiichy Sankyo, Bayer AG, Novartis Pharma and consulting fees from Boehringer Ingelheim, Daiichy Sankyo, Novartis Pharma and Payment or honoraria for lectures, presentations, speakers bureaus, manuscript writing, or educational events from sanofi-aventis, Bayer Health Care, AstraZeneca, Bayer Vital and receipt of equipment, materials, drugs, medical writing, gifts or other services from DiaSorin, I.E.M. (Provision of Laboratory Assays). R.M. reports supports from Estonian Research Council. S.M.a reports support from WHO Monica Project Provision of study supplies and material, the Wellcome Trust, National Institute on Aging, Russian Scientific Foundation, Russian Academy of Science. S.S. reports Participation on a Data Safety Monitoring Board or Advisory Board for Actelion Ltd Advisory board and scientific committee. S.K. reports support from British Heart Foundation, UK Medical Research Council, UK National Institute for Health Research, European Research Council, European Commission Framework Programme 7 grants to institution. St. S. reports support from National Institutes of Health, USA for Grants to Columbia University. T.O. reports grants from Novartis, Abbott Diagnostics, Roche Diagnostics, SomaLogic for Nonfinancial support to institution, consulting fees for Roche Diagnostics, Abbott Diagnostics, CardiNor, Payment or honoraria for lectures, presentations, speakers bureaus, manuscript writing, or educational events from Siemens Healthineers, Roche Diagnostics, Abbott Diagnostics. Patents planned, issued or pending from Granin proteins, PCT/GB0818650, and Sgll, leadership or fiduciary role for Member IFCC Committee on Cardiovascular Biomarkers. V.S. reports Grants from the Finnish Foundation for Cardiovascular Research, and consulting fees from Novo Nordisk and Sanofi for unrelated to the present manuscript, other financial or non-financial interests for research collaboration with Bayer Ltd. Y.N. reports support from WHO Monica Project Provision of study supplies and material, the Wellcome Trust, National Institute on Aging, Russian Scientific Foundation, and Russian Academy of Science.

Appendix

SCORE2 working group and ESC Cardiovascular risk collaboration

Writing committee: Steven Hageman* (Department of Vascular Medicine, University Medical Center Utrecht, Utrecht University, Utrecht, The Netherlands); Lisa Pennells* (Department of Public Health and Primary Care, University of Cambridge, Cambridge, UK); Francisco Ojeda* (University Heart & Vascular Center, Hamburg, Germany); Stephen Kaptoge* (Department of Public Health and Primary Care, University of Cambridge, Cambridge, UK); Kari Kuulasmaa* (THL-Finnish Institute for Health and Welfare, Helsinki, Finland); Tamar de Vries (Department of Vascular Medicine, University Medical Center Utrecht, Utrecht University, Utrecht, The Netherlands); Zhe Xu (Department of Public Health and Primary Care, University of Cambridge, Cambridge, UK); Frank Kee (School of Medicine, Dentistry and Biomedical Sciences, Queen's University, Belfast, Northern Ireland); Ryan Chung (Department of Public Health and Primary Care, University of Cambridge, Cambridge, UK); Angela Wood (Department of Public Health and Primary Care, University of Cambridge, Cambridge, UK); John William McEvoy (National University of Ireland Galway, Galway, Ireland); Giovanni Veronesi (Research Center in Epidemiology and Preventive Medicine, Department of Medicine and Surgery, University of Insubria, Varese, Italy); Thomas Bolton (Department of Public Health and Primary Care, University of Cambridge, Cambridge, UK); Paul Dendale (Hasselt University, Hasselt, Belgium); Brian A. Ference (Department of Public Health and Primary Care, University of Cambridge, Cambridge, UK); Martin Halle (University Hospital 'Klinikum rechts der Isar', Technical University of Munich, Munich, Germany); Adam Timmis (William Harvey Research Institute, Barts & The London School of Medicine & Dentistry, Queen Mary University of London, London, UK); Panos Vardas (Heraklion University Hospital, Crete, Greece); John Danesh (Department of Public Health and Primary Care, University of Cambridge, Cambridge, UK); Ian Graham† (School of Medicine, Trinity College Dublin, The University of Dublin, College Green, Dublin, Ireland); Veikko Salomaa† (THL-Finnish Institute for Health and Welfare, Helsinki, Finland); Frank Visseren† (Department of Vascular Medicine, University Medical Center Utrecht, Utrecht University, Utrecht, The Netherlands); Dirk De Bacquer† (Department of Public Health and Primary Care, Ghent University, Ghent, Belgium); Stefan Blankenberg†‡ (University Heart & Vascular Center Hamburg, Hamburg, Germany, and German Centre for Cardiovascular Disease (DZHK), Partner site Hamburg/Lübeck/Kiel, Hamburg, Germany); Jannick Dorresteijn†‡ (Department of Vascular Medicine, University Medical Center Utrecht, Utrecht University, Utrecht, The Netherlands); Emanuele Di Angelantonio†‡ (Department of Public Health and Primary Care, University of Cambridge, Cambridge, UK).

*Contributed equally.

†Contributed equally.

‡Joint corresponding authors. Email: ed303@medschl.cam.ac.uk (E.D.A.); J.A.N.Dorresteijn-2@umcutrecht.nl (J.D.); s.blankenberg@u-ke.de (S.B.).

Authors listed alphabetically (all authors listed alphabetically contributed equally):

Stephan Achenbach (Friedrich Alexander University, Erlangen, Germany); Krasimira Aleksandrova [German Institute of Human Nutrition (DIfE), Potsdam-Rehbrücke, Germany]; Pilar Amiano [Public Health Division of Gipuzkoa, BioDonostia Research Institute, Donostia-San Sebastian, Spain; CIBER Epidemiología y Salud Pública (CIBERESP), Spain]; Philippe Amouyel (Institut Pasteur de Lille, Lille, France); Jonas Andersson (Department of Public Health and Clinical Medicine, Umeå University, Umeå, Sweden); Stephan J.L. Bakker (Department of Internal Medicine, University Medical Centre Groningen, University of Groningen, Groningen, The Netherlands); Rui Bebbiano Da Providencia Costa (UCL Institute for Health Informatics Research, University College London, London, UK); Joline W.J. Beulens (Amsterdam Public Health research institute, VU University Medical Center, Amsterdam, The Netherlands); Michael Blaha (Johns Hopkins Ciccarone Center for the Prevention of Heart Disease, Johns Hopkins Hospital, Baltimore, MD, USA); Martin Bobak (Department of Epidemiology and Public Health, University College London, London, UK); Jolanda M.A. Boer [National Institute for Public Health and the Environment (RIVM), Bilthoven, The Netherlands]; Catalina Bonet (Unit of Nutrition and Cancer, Cancer Epidemiology Research Program, Catalan Institute of Oncology-IDIBELL, L'Hospitalet de Llobregat, Barcelona, Spain); Fabrice Bonnet (University of Rennes, University Hospital of Rennes, Department of Endocrinology-Diabetes-Nutrition, Rennes, France); Marie-Christine Boutron-Ruault [Centre de Recherche en Épidémiologie et Santé des Populations (CESP), INSERM, Paris, France]; Tonje Braaten (Department of Community Medicine, The Arctic University of Norway, Tromsø, Norway); Hermann Brenner (Division of Clinical Epidemiology and Aging Research, German Cancer Research Center, Heidelberg, Germany. Network Aging Research, University of Heidelberg, Heidelberg, Germany); Fabian Brunner [University Heart & Vascular Center Hamburg, Hamburg, Germany and German Centre for Cardiovascular Disease (DZHK), Partner site Hamburg/Lübeck/Kiel, Hamburg, Germany]; Eric J. Brunner (Department of Epidemiology and Public Health University College London, London, UK); Mattias Brunström (Department of Public Health and Clinical Medicine, Umeå University, Umeå, Sweden); Julie Buring (Brigham & Women's Hospital, Harvard Medical School Harvard University, Boston, MA, USA); Adam S. Butterworth (Department of Public Health and Primary Care, University of Cambridge, Cambridge, UK); Nadezda Capkova (National Institute of Public Health, Czech Republic); Giancarlo Cesana (Research Centre on Public Health, Department of Medicine and Surgery, University of Milano-Bicocca, Monza, Italy); Christina Chrysohoou (School of Medicine, University of Athens, Athens, Greece); Sandra Colorado-Yohar (Department of Epidemiology, Murcia Regional Health Council, IMIB-Arrixaca, Murcia, Spain). CIBER Epidemiología y Salud Pública (CIBERESP), Spain. Research Group on Demography and Health, National Faculty of Public Health, University of Antioquia, Medellín, Colombia); Nancy R. Cook (Brigham & Women's Hospital, Harvard Medical School Harvard University, Boston, MA, USA); Cyrus Cooper (MRC Lifecourse Epidemiology Unit, University of Southampton, Southampton, UK); Christina C. Dahm (Department of Public Health, Aarhus University,

Aarhus, Denmark); Karina Davidson (Feinstein Institutes for Medical Research, Northwell Health, New York, NY, USA); Elaine Dennison (MRC Lifecourse Epidemiology Unit, University of Southampton, Southampton, UK); Augusto Di Castelnuovo [IRCCS NEUROMED—Mediterranean Neurological Institute, Pozzilli (IS), Italy]; Chiara Donfrancesco (Department of Cardiovascular, Endocrine-metabolic Diseases and Aging, National Institute of Health, Rome, Italy); Marcus Dörr [Institute for Community Medicine, University Medicine Greifswald, University of Greifswald, Greifswald, Germany. German Centre for Cardiovascular Disease (DZHK), Partner Site Greifswald, and German Centre for Cardiovascular Disease (DZD), Site Greifswald, Greifswald, Germany]; Agnieszka Doryńska (Department of Epidemiology and Population Studies, Institute of Public Health, Faculty of Health Sciences, Jagiellonian University Medical College, Poland); Mats Eliasson (Department of Public Health and Clinical Medicine, University of Umea, Umea, Sweden); Gunnar Engström (Lund University, Department of Clinical Sciences Malmö, Malmö, Sweden); Pietro Ferrari [International Agency for Research on Cancer (IARC), Lyon, France]; Marco Ferrario (Research Center in Epidemiology and Preventive Medicine, Department of Medicine and Surgery, University of Insubria, Varese, Italy); Ian Ford (Institute of Health & Wellbeing, University of Glasgow, Glasgow, UK); Michael Fu (University of Gothenburg, Gothenburg, Sweden); Ron T Gansevoort (University of Oxford, Oxford, UK; Department of Internal Medicine, University Medical Centre Groningen, University of Groningen, Groningen, The Netherlands); Simona Giampaoli (Department of Cardiovascular, Dysmetabolic and Aging-associated Diseases, Istituto Superiore di Sanità, Rome, Italy); Richard F. Gillum (Howard University Hospital, Washington DC, DC, USA); Agustín Gómez de la Cámara (Instituto de Investigación Hospital 12 de Octubre, CIBERESP, Madrid, Spain); Guido Grassi (Clinica Medica, University of Milano-Bicocca, Milan, Italy); Per-Olof Hansson (Department of Molecular and Clinical Medicine, Institute of Medicine, University of Gothenburg, Sahlgrenska Academy, Gothenburg, Sweden. Department of Medicine, Geriatrics and Emergency Medicine, Sahlgrenska University Hospital/Östra, Gothenburg, Sweden); Radu Huculeci (European Society of Cardiology, Brussels, Belgium); Kristian Hveem [K.G. Jebsen Center for Genetic Epidemiology, Department of Public Health and Nursing, Norwegian University of Science and Technology (NTNU), Trondheim, Norway. HUNT Research Center, Department of Public Health and Nursing, Norwegian University of Science and Technology (NTNU), Levanger, Norway]; Licia Iacoviello [Department of Epidemiology and Prevention, IRCCS Neuromed, Pozzilli (IS), Italy, Research Center in Epidemiology and Preventive Medicine, Department of Medicine and Surgery, University of Insubria, Varese, Italy]; M. Kamran Ikram (Department of Epidemiology, Erasmus MC, University Medical Center Rotterdam, Rotterdam, The Netherlands); Torben Jørgensen (Center for Clinical Research and Prevention, Bispebjerg/Frederiksberg Hospital, Copenhagen, Denmark. Department of Public Health, Faculty of Health and Medical Sciences, Copenhagen University, Denmark. Faculty of Medicine, Aalborg University, Denmark); Bijoy Joseph (THL-Finnish Institute for Health and Welfare, Helsinki, Finland); Pekka Jousilahti (THL-Finnish Institute for Health and Welfare, Helsinki, Finland); J. Wouter Jukema (Leiden University Medical Center, the Netherlands. Netherlands Heart Institute, Utrecht, The

Netherlands); Rudolf Kaaks [Division of Clinical Epidemiology and Aging Research, German Cancer Research Center (DKFZ), Heidelberg, Germany. Network Aging Research, University of Heidelberg, Heidelberg, Germany]; Verena Katzke [Division of Clinical Epidemiology and Aging Research, German Cancer Research Center (DKFZ), Heidelberg, Germany. Network Aging Research, University of Heidelberg, Heidelberg, Germany]; Maryam Kavousi (Department of Epidemiology, Erasmus MC, University Medical Center Rotterdam, Rotterdam, The Netherlands); Stefan Kiechl (Department of Neurology, Medical University Innsbruck, Innsbruck, Austria); Jens Klotsche (German Rheumatism Research Centre - Epidemiologic Unit, Berlin, Germany); Wolfgang König [German Heart Centre, Technical University of Munich, Munich, Germany. German Centre for Cardiovascular Research (DZHK), partner site Munich Heart Alliance, Munich, Germany]; Richard A. Kronmal (School of Public Health, University of Washington, Seattle, WA, USA); Ruzena Kubinova (National Institute of Public Health, Czech Republic); Anna Kucharska-Newton (University of Kentucky); Kristi Läll (University of Tartu, Tartu, Estonia); Nils Lehmann [Institut für Medizinische Informatik, Biometrie und Epidemiologie (IMIBE), Essen, Germany]; David Leistner (Charité—Berlin University of Medicine, Berlin, Germany); Allan Linneberg (Center for Clinical Research and Prevention, Bispebjerg/Frederiksberg Hospital, Copenhagen, Denmark. Department of Clinical Medicine, Faculty of Health and Medical Sciences, University of Copenhagen, Copenhagen, Denmark); David Lora Pablos (Instituto de Investigación Hospital 12 de Octubre, CIBERESP, Madrid, Spain); Thiess Lorenz (University Heart & Vascular Center Hamburg, Hamburg, Germany.); Wentian Lu (Department of Epidemiology and Public Health, University College London, London, UK); Dalia Luksiene (Department of Preventive Medicine, Faculty of Public Health, Lithuanian University of Health Sciences, Kaunas, Lithuania); Magnus Lyngbakken (Department of Cardiology, Division of Medicine, Akershus University Hospital, Lørenskog, Norway. Institute of Clinical Medicine, University of Oslo, Oslo, Norway); Christina Magnussen [University Heart & Vascular Center Hamburg, Hamburg, Germany and German Centre for Cardiovascular Disease (DZHK), Partner site Hamburg/Lübeck/Kiel, Hamburg, Germany]; Sofia Malyutina [Research Institute of Internal and Preventive Medicine, Branch of 'Federal Research Center Institute of Cytology and Genetics' (IC&G), Siberian Branch of RAS, Novosibirsk, Russia]; Alejandro Marín Ibañez (San Jose Norte Health Centre, Zaragoza, Spain); Giovanna Masala (Cancer Risk Factors and Life-Style Epidemiology Unit, Institute for Cancer Research, Prevention and Clinical Network-ISPRO, Florence, Italy); Ellisiv B. Mathiesen (Department of Clinical Medicine, UiT The Arctic University of Norway, Tromsø, Norway and Department of Neurology, University Hospital of North Norway, Tromsø, Norway); Kuni Matsushita (Johns Hopkins University); Tom W. Meade (London School of Hygiene & Tropical Medicine, London, UK); Olle Melander (Lund University, Department of Clinical Sciences Malmö, Malmö, Sweden); Haakon E. Meyer (Norwegian Institute of Public Health, Oslo, Norway); Karel G.M. Moons (Julius Center for Health Sciences and Primary Care, UMC Utrecht, Utrecht University, Utrecht, The Netherlands); Conchi Moreno-Iribas [Instituto de Salud Pública de Navarra-IdiSNA, Pamplona, Spain. Red de Investigación en Servicios de Salud en Enfermedades Crónicas (REDISSEC), Pamplona, Spain]; David Muller (Faculty of

Medicine, School of Public Health, Imperial College London, London, UK); Thomas Münzel (University Medical Center of the Johannes Gutenberg-University Mainz, Mainz, Germany); Yury Nikitin [Research Institute of Internal and Preventive Medicine, Branch of 'Federal Research Center Institute of Cytology and Genetics' (IC&G), Siberian Branch of RAS, Novosibirsk, Russia]; Børge G. Nordestgaard (The Copenhagen General Population Study, Herlev and Gentofte Hospital, Copenhagen University Hospital, Denmark. The Copenhagen City Heart Study, Frederiksberg Hospital, Copenhagen University Hospital, Denmark. Department of Clinical Medicine, Faculty of Health and Medical Sciences, University of Copenhagen, Denmark); Torbjørn Omland (Department of Cardiology, Division of Medicine, Akershus University Hospital, Lørenskog, Norway. Institute of Clinical Medicine, University of Oslo, Oslo, Norway); Charlotte Onland (Julius Center for Health Sciences and Primary Care, University Medical Center Utrecht, Utrecht University, Utrecht, The Netherlands); Kim Overvad (Department of Public Health, Aarhus University, Aarhus, Denmark. Department of Cardiology, Aalborg University Hospital, Aalborg, Denmark); Chris Packard (Institute of Health & Wellbeing, University of Glasgow, Glasgow, UK); Andrzej Pająk (Department of Epidemiology and Population Studies, Institute of Public Health, Faculty of Health Sciences, Jagiellonian University Medical College, Poland); Luigi Palmieri (Department of Cardiovascular, Dysmetabolic and Aging-associated Diseases, Istituto Superiore di Sanità, Rome, Italy); Demosthenes Panagiotakos (School of Health Sciences and Education, Harokopio University); Salvatore Panico (Dipartimento di Medicina clinica e Chirurgia, Università degli Studi Napoli Federico II, Naples, Italy); Aurora Perez-Cornago (Cancer Epidemiology Unit, Nuffield Department of Population Health, University of Oxford, Oxford, UK); Annette Peters (Helmholtz Zentrum München, German Research Center for Environmental Health, Institute of Epidemiology, Munich, Germany); Arto Pietilä (THL-Finnish Institute for Health and Welfare, Helsinki, Finland); Hynek Pikhart (Department of Epidemiology and Public Health, University College London, London, UK); Bruce M. Psaty (Cardiovascular Health Research Unit, University of Washington, Seattle, WA, USA); Fosca Quarti-Trevano (Clinica Medica, University of Milano-Bicocca, Milan Italy); J. Ramón Quirós García (Consejería de Sanidad del Principado de Asturias, Oviedo, Spain); Elio Riboli (Faculty of Medicine, School of Public Health, Imperial College London, London, UK); Paul M. Ridker (Brigham & Women's Hospital, Harvard Medical School Harvard University, Boston, MA, USA); Beatriz Rodriguez (University of Hawaii and Tecnológico de Monterrey, Honolulu, HI, USA); Miguel Rodriguez-Barranco [Escuela Andaluza de Salud Pública (EASP), Granada, Spain. Instituto de Investigación Biosanitaria ibs. GRANADA, Granada, Spain. Centro de Investigación Biomédica en Red de Epidemiología y Salud Pública (CIBERESP), Madrid, Spain]; Annika Rosengren (Sahlgrenska University Hospital and Östra Hospital, Göteborg, Sweden); Ronan Roussel (Assistance Publique-Hôpitaux de Paris, Bichat Hospital, Département de Diabétologie, Endocrinologie, Nutrition, Paris, France. Université de Paris, Paris, France. Centre de Recherche des Cordeliers, INSERM, Sorbonne Université, Université de Paris, Paris, France); Carlotta Sacerdote (SC Epidemiologia dei Tumori—CRPT U, AOU Città della Salute e della Scienza di Torino e Università degli Studi di Torino, Turin, Italy); Susana Sans (The Catalan Department of Health, Barcelona, Spain); Naveed Sattar (Institute of

Cardiovascular & Medical Sciences, University of Glasgow, Glasgow, UK); Catarina Schiborn [German Institute of Human Nutrition (DIfE), Potsdam-Rehbrücke, Germany]; Børge Schmidt [Institut für Medizinische Informatik, Biometrie und Epidemiologie (IMIBE), Essen, Germany]; Ben Schöttker (Division of Clinical Epidemiology and Aging Research, German Cancer Research Center, Heidelberg, Germany. Network Aging Research, University of Heidelberg, Heidelberg, Germany); Matthias Schulze [German Institute of Human Nutrition (DIfE), Potsdam-Rehbrücke, Germany]; Joseph E. Schwartz (Columbia University, New York, NY, USA); Randi Marie Selmer (Norwegian Institute of Public Health, Oslo, Norway); Steven Shea (Mailman School of Public Health, Columbia University, NY, USA); Martin J. Shipley (Department of Epidemiology and Public Health University College London, London, UK); Sabina Sieri (Epidemiology and Prevention Unit, Fondazione IRCCS Istituto Nazionale dei Tumori di Milano, Milano, Italy); Stefan Söderberg (Department of Public Health and Clinical Medicine, University of Umea, Umea, Sweden); Reecha Sofat (UCL Institute for Health Informatics Research, University College London, London, UK); Abdonas Tamosiunas (Laboratory of Population Studies, Institute of Cardiology, Kaunas, Lithuania. Department of Preventive Medicine, Faculty of Public Health, Lithuanian University of Health Sciences, Kaunas, Lithuania); Barbara Thorand (Helmholtz Zentrum München, German Research Center for Environmental Health, Institute of Epidemiology, Munich, Germany); Taavi Tillmann (University College London, London, UK); Anne Tjønneland (Danish Cancer Society Research Center Diet, Genes and Environment, Copenhagen); Tammy Y.N. Tong (Cancer Epidemiology Unit, Nuffield Department of Population Health, University of Oxford, Oxford, UK); Antonia Trichopoulou (School of Medicine, University of Athens, Athens, Greece); Rosario Tumino [Cancer Registry and Histopathology Department, Provincial Health Authority (ASP 7), Ragusa, Italy]; Hugh Tunstall-Pedoe (Cardiovascular Epidemiology Unit, Institute of Cardiovascular Research, University of Dundee, Dundee, Scotland, UK); Anne Tybjaerg-Hansen (The Copenhagen General Population Study, Herlev and Gentofte Hospital, Copenhagen University Hospital, Denmark. The Copenhagen City Heart Study, Frederiksberg Hospital, Copenhagen University Hospital, Denmark. Department of Clinical Medicine, Faculty of Health and Medical Sciences, University of Copenhagen, Denmark. Department of Clinical Biochemistry, Rigshospitalet, Copenhagen University Hospital, Denmark); Joanna Tzoulaki (Faculty of Medicine, School of Public Health, Imperial College London, London, UK); Amber van der Heijden (Amsterdam Public Health research institute, VU University Medical Center, Amsterdam, The Netherlands); Yvonne T. van der Schouw (Julius Center for Health Sciences and Primary Care, University Medical Center Utrecht, Utrecht University, Utrecht, The Netherlands); W.M. Monique Verschuren [National Institute for Public Health and the Environment (RIVM), Bilthoven, The Netherlands. Julius Center for Health Sciences and Primary Care, University Medical Center Utrecht, Utrecht University, Utrecht, the Netherlands]; Henry Völzke [Institute for Community Medicine, University Medicine Greifswald, University of Greifswald, Greifswald, Germany. German Centre for Cardiovascular Disease (DZHK), Partner Site Greifswald, and German Centre for Cardiovascular Disease (DZD), Site Greifswald, Greifswald, Germany]; Christoph Waldeyer [University Heart & Vascular Center Hamburg, Hamburg,

Germany and German Centre for Cardiovascular Disease (DZHK), Partner site Hamburg/Lübeck/Kiel, Hamburg, Germany]; Nicholas J. Wareham (MRC Epidemiology Unit, University of Cambridge School of Clinical Medicine, University of Cambridge, Cambridge, UK); Elisabethe Weiderpass [International Agency for Research on Cancer (IARC), Lyon, France]; Franz Weidinger (Rudolfstiftung Hospital, Vienna, Austria); Philipp Wild (University Medical Center of the Johannes Gutenberg-University Mainz, Mainz, Germany); Johann Willeit (Department of Neurology, Medical University Innsbruck, Innsbruck, Austria); Peter Willeit (Department of Neurology, Medical University Innsbruck, Innsbruck, Austria); Tom Wilsgaard (Department of Community Medicine, UiT The Arctic University of Norway, Tromsø, Norway); Mark Woodward (The George Institute for Global Health, University of New South Wales, Sydney, Australia; School of Public Health, Imperial College London, London, UK; and Cardiovascular Epidemiology Unit, Institute of Cardiovascular Research, University of Dundee, Dundee, Scotland, UK); Tanja Zeller [University Heart & Vascular Center Hamburg, Hamburg, Germany and German Centre for Cardiovascular Disease (DZHK), Partner site Hamburg/Lübeck/Kiel, Hamburg, Germany]; Dudan Zhang (Department of Public Health and Primary Care, University of Cambridge, Cambridge, UK); Bin Zhou (Faculty of Medicine, School of Public Health, Imperial College London, London, UK).

References

- Roth GA, Mensah GA, Johnson CO, Addolorato G, Ammirati E, Baddour LM, Barengo NC, Beaton AZ, Benjamin EJ, Benziger CP, Bonny A, Brauer M, Brodmann M, Cahill TJ, Carapetis J, Catapano AL, Chugh SS, Cooper LT, Coresh J, Criqui M, DeCleene N, Eagle KA, Emmons-Bell S, Feigin VL, Fernández-Solà J, Fowkes G, Gakidou E, Grundy SM, He FJ, Howard G, Hu F, Inker L, Karthikeyan G, Kassebaum N, Koroshetz W, Lavie C, Lloyd-Jones D, Lu HS, Mirijello A, Temesgen AM, Mokdad A, Moran AE, Muntner P, Narula J, Neal B, Ntsekhe M, Moraes de Oliveira G, Otto C, Owolabi M, Pratt M, Rajagopalan S, Reitsma M, Ribeiro ALP, Rigotti N, Rodgers A, Sable C, Shakil S, Sliwa-Hahnle K, Stark B, Sundström J, Timpel P, Tjeyeh IM, Valgimigli M, Vos T, Whelton PK, Yacoub M, Zuhlke L, Murray C, Fuster V; GBD-NHLBI-JACC Global Burden of Cardiovascular Diseases Writing Group. Global burden of cardiovascular diseases and risk factors, 1990–2019: update from the GBD 2019 study. *J Am Coll Cardiol* 2020;**76**:2982–3021.
- GBD 2019 Diseases and Injuries Collaborators. Global burden of 369 diseases and injuries in 204 countries and territories, 1990–2019: a systematic analysis for the Global Burden of Disease Study 2019. *Lancet* 2020;**396**:1204–1222.
- Mach F, Baigent C, Catapano AL, Koskinas KC, Casula M, Badimon L, Chapman MJ, De Backer GG, Delgado V, Ference BA, Graham IM, Halliday A, Landmesser U, Mihaylova B, Pedersen TR, Riccardi G, Richter DJ, Sabatine MS, Taskinen M-R, Tokgozoglul L, Wiklund O, Mueller C, Drexel H, Aboyans V, Corsini A, Doehner W, Farnier M, Gigante B, Kayikcioglu M, Krstacic G, Lambrinou E, Lewis BS, Masip J, Moulin P, Petersen S, Petronio AS, Piepoli MF, Pintó X, Räber L, Ray KK, Reiner Ž, Riesen WF, Roffi M, Schmid J-P, Shlyakhto E, Simpson IA, Stroes E, Sudano I, Tselepis AD, Viigimaa M, Vindis C, Vonbank A, Vrablik M, Vrsalovic M, Zamorano JL, Collet J-P, Koskinas KC, Casula M, Badimon L, John Chapman M, De Backer GG, Delgado V, Ference BA, Graham IM, Halliday A, Landmesser U, Mihaylova B, Pedersen TR, Riccardi G, Richter DJ, Sabatine MS, Taskinen M-R, Tokgozoglul L, Wiklund O, Windecker S, Aboyans V, Baigent C, Collet J-P, Dean V, Delgado V, Fitzsimons D, Gale CP, Grobbee D, Halvorsen S, Hindricks G, Jung B, Juni P, Katus HA, Landmesser U, Leclercq C, Lettino M, Lewis BS, Merkely B, Mueller C, Petersen S, Petronio AS, Richter DJ, Roffi M, Shlyakhto E, Simpson IA, Sousa-Uva M, Touyz RM, Nibouche D, Zelveian PH, Siostrozzonek P, Najafov R, van de Borne P, Pojskic B, Postadzhiyan A, Kypris L, Špinar J, Larsen ML, Eldin HS, Viigimaa M, Strandberg TE, Ferrières J, Agladze R, Laufs U, Rallidis L, Bajnok L, Gudjonsson T, Maher V, Henkin Y, Gulizia MM, Mussagalyeva A, Bajraktari G, Kerimkulova A, Latkovskis G, Hamoui O, Slapikas R, Visser L, Dingli P, Ivanov V, Boskovic A, Nazzi M, Visseren F, Mitevska I, Retterstøl K, Jankowski P, Fontes-Carvalho R, Gaita D, Ezhov M, Foscoli M, Giga V, Pella D, Fras Z, de Isla LP, Hagström E, Lehmann R, Abid L, Ozdogan O, Mitchenko O, Patel RS, ESC Scientific Document Group. 2019 ESC/EAS Guidelines for the management of dyslipidaemias: lipid modification to reduce cardiovascular risk. *Eur Heart J* 2020;**41**:111–188.
- Rossello X, Dorresteijn JA, Janssen A, Lambrinou E, Scherrenberg M, Bonnefoy-Cudraz E, Cobain M, Piepoli MF, Visseren FL, Dendale P. Risk prediction tools in cardiovascular disease prevention: a report from the ESC Prevention of CVD Programme led by the European Association of Preventive Cardiology (EAPC) in collaboration with the Acute Cardiovascular Care Association (ACCA) and the Association of Cardiovascular Nursing and Allied Professions (ACNAP). *Eur J Prev Cardiol* 2019;**26**:1534–1544.
- Conroy RM, Pyörälä K, Fitzgerald AP, Sans S, Menotti A, De Backer G, De Bacquer D, Ducimetière P, Jousilahti P, Keil U, Njølstad I, Oganov RG, Thomsen T, Tunstall-Pedoe H, Tverdal A, Wedel H, Whincup P, Wilhelmsen L, Graham IM, SCORE project group. Estimation of ten-year risk of fatal cardiovascular disease in Europe: the SCORE project. *Eur Heart J* 2003;**24**:987–1003.
- Goff DC, Lloyd-Jones DM, Bennett G, Coady S, D'agostino RB, Gibbons R, Greenland P, Lackland DT, Levy D, O'donnell CJ, Robinson JG. . 2013 ACC/AHA guideline on the assessment of cardiovascular risk: a report of the American College of Cardiology/American Heart Association Task Force on Practice Guidelines. *J Am Coll Cardiol* 2014;**63**(25, Part B): 2935–2959.
- Pylypchuk R, Wells S, Kerr A, Poppe K, Riddell T, Harwood M, Exeter D, Mehta S, Grey C, Wu BP, Metcalf P, Warren J, Harrison J, Marshall R, Jackson R. Cardiovascular disease risk prediction equations in 400000 primary care patients in New Zealand: a derivation and validation study. *Lancet* 2018;**391**:1897–1907.
- Ridker PM, Buring JE, Rifai N, Cook NR. Development and validation of improved algorithms for the assessment of global cardiovascular risk in women: the Reynolds Risk Score. *JAMA* 2007;**297**:611–619.
- Assmann G, Cullen P, Schulte H. Simple scoring scheme for calculating the risk of acute coronary events based on the 10-year follow-up of the prospective cardiovascular Münster (PROCAM) study. *Circulation* 2002;**105**:310–315.
- Hippisley-Cox J, Coupland C, Brindle P. Development and validation of QRISK3 risk prediction algorithms to estimate future risk of cardiovascular disease: prospective cohort study. *BMJ* 2017;**357**:j2099.
- Sudlow C, Gallacher J, Allen N, Beral V, Burton P, Danesh J, Downey P, Elliott P, Green J, Landray M, Liu B, Matthews P, Ong G, Pell J, Silman A, Young A, Sprosen T, Peakman T, Collins R. UK Biobank: an open access resource for identifying the causes of a wide range of complex diseases of middle and old age. *PLoS Med* 2015;**12**:e1001779.
- The Emerging Risk Factors Collaboration. The Emerging Risk Factors Collaboration: analysis of individual data on lipid, inflammatory and other markers in over 1.1 million participants in 104 prospective studies of cardiovascular diseases. *Eur J Epidemiol* 2007;**22**:839–869.
- World Health Organization. WHO Mortality Database. <https://www.who.int/data/data-collection-tools/who-mortality-database> (20 March 2021).
- Herrett E, Gallagher AM, Bhaskaran K, Forbes H, Mathur R, van Staai T, Smeeth L. Data resource profile: Clinical Practice Research Datalink (CPRD). *Int J Epidemiol* 2015;**44**:827–836.
- Salomaa V, Havulinna AS, Koukkunen H, Kärjä-Koskenkari P, Pietilä A, Mustonen J, Ketonen M, Lehtonen A, Immonen-Räihä P, Lehto S, Airaksinen J, Kesäniemi YA. Aging of the population may not lead to an increase in the numbers of acute coronary events: a community surveillance study and modelled forecast of the future. *Heart* 2013;**99**:954–959.
- Ludvigsson JF, Andersson E, Ekblom A, Feychting M, Kim J-L, Reuterwall C, Heurgren M, Olausson PO. External review and validation of the Swedish national inpatient register. *BMC Public Health* 2011;**11**:450.
- Leitsalu L, Haller T, Esko T, Tammesoo M-L, Alavere H, Snieder H, Perola M, Ng PC, Mägi R, Milani L, Fischer K, Metspalu A. Cohort profile: Estonian Biobank of the Estonian Genome Center, University of Tartu. *Int J Epidemiol* 2015;**44**:1137–1147.
- Peasey A, Bobak M, Kubinova R, Maljutina S, Pajak A, Tamosiunas A, Pikhart H, Nicholson A, Marmot M. Determinants of cardiovascular disease and other non-communicable diseases in Central and Eastern Europe: rationale and design of the HAPIEE study. *BMC Public Health* 2006;**6**:255.
- NCD Risk Factor Collaboration (NCD-RisC). Worldwide trends in blood pressure from 1975 to 2015: a pooled analysis of 1479 population-based measurement studies with 19.1 million participants. *Lancet* 2017;**389**:37–55.
- NCD Risk Factor Collaboration (NCD-RisC). Worldwide trends in diabetes since 1980: a pooled analysis of 751 population-based studies with 4.4 million participants. *Lancet* 2016;**387**:1513–1530.
- Evans A, Salomaa V, Kulathinal S, Asplund K, Cambien F, Ferrario M, Perola M, Peltonen L, Shields D, Tunstall-Pedoe H, Kuulasmaa K, MORGAM Project. MORGAM (an international pooling of cardiovascular cohorts). *Int J Epidemiol* 2005;**34**:21–27.
- Zeller T, Hughes M, Tuovinen T, Schillert A, Conrads-Frank A, Ruijter H, D, Schnabel RB, Kee F, Salomaa V, Siebert U, Thorand B, Ziegler A, Breek

- H, Pasterkamp G, Kuulasmaa K, Koenig W, Blankenberg S. BiomarcAR: rationale and design of the European BiomarcAR project including 300,000 participants from 13 European countries. *Eur J Epidemiol* 2014;**29**:777–790.
23. Danesh J, Saracci R, Berglund G, Feskens E, Overvad K, Panico S, Thompson S, Fournier A, Clavel-Chapelon F, Canonico M, Kaaks R, Linseisen J, Boeing H, Pischon T, Weikert C, Olsen A, Tjønneland A, Johnsen SP, Jensen MK, Quirós JR, Svatec CAG, Pérez M-JS, Larrañaga N, Sanchez CN, Iribas CM, Bingham S, Khaw K-T, Wareham N, Key T, Roddam A, Trichopoulou A, Benetou V, Trichopoulos D, Masala G, Sieri S, Tumino R, Sacerdote C, Mattiello A, Verschuren WMM, Bueno-de-Mesquita HB, Grobbee DE, van der Schouw YT, Melander O, Hallmans G, Wennberg P, Lund E, Kumle M, Skeie G, Ferrari P, Slimani N, Norat T, Riboli E, EPIC-Heart. EPIC-Heart: the cardiovascular component of a prospective study of nutritional, lifestyle and biological factors in 520,000 middle-aged participants from 10 European countries. *Eur J Epidemiol* 2007;**22**:129–141.
 24. Schmermund A, Möhlenkamp S, Stang A, Grönemeyer D, Seibel R, Hirche H, Mann K, Siffert W, Lauterbach K, Siegrist J, Jöckel K-H, Erbel R. Assessment of clinically silent atherosclerotic disease and established and novel risk factors for predicting myocardial infarction and cardiac death in healthy middle-aged subjects: rationale and design of the Heinz Nixdorf RECALL Study. *Am Heart J* 2002;**144**:212–218.
 25. Krokstad S, Langhammer A, Hveem K, Holmen TL, Midthjell K, Stene TR, Bratberg G, Heggland J, Holmen J. Cohort profile: the HUNT Study, Norway. *Int J Epidemiol* 2013;**42**:968–977.
 26. Wittchen H-U, Glaesmer H, März W, Stalla G, Lehnert H, Zeiger AM, Silber S, Koch U, Böhler S, Pittrow D, Ruf G, DETECT-Study Group. Cardiovascular risk factors in primary care: methods and baseline prevalence rates—the DETECT program. *Curr Med Res Opin* 2005;**21**:619–630.
 27. Wild PS, Zeller T, Beutel M, Blettner M, Dugi KA, Lackner KJ, Pfeiffer N, Münzel T, Blankenberg S. The Gutenberg Health Study. *Bundesgesundheitsblatt Gesundheitsforschung Gesundheitsschutz* 2012;**55**:824–829.
 28. WHO CVD Risk Chart Working Group. World Health Organization cardiovascular disease risk charts: revised models to estimate risk in 21 global regions. *Lancet Global Health* 2019;**7**:e1332–e1345.
 29. The SCORE2-OP working group and ESC Cardiovascular Risk Collaboration (CRC) Unit. SCORE2-OP risk prediction algorithms: estimating incidence cardiovascular event risk in older persons in four geographical risk regions. *Eur Heart J* 2021; doi: 10.1093/eurheartj/ehab312.
 30. Pennells L, Kaptoge S, Wood A, Sweeting M, Zhao X, White I, Burgess S, Willeit P, Bolton T, Moons KGM, van der Schouw YT, Selmer R, Khaw K-T, Gudnason V, Assmann G, Amouyel P, Salomaa V, Kivimaki M, Nordestgaard BG, Blaha MJ, Kuller LH, Brenner H, Gillum RF, Meisinger C, Ford I, Knuiman MW, Rosengren A, Lawlor DA, Völzke H, Cooper C, Marín Ibañez A, Casiglia E, Kauhanen J, Cooper JA, Rodriguez B, Sundström J, Barrett-Connor E, Dankner R, Nietert PJ, Davidson KW, Wallace RB, Blazer DG, Björkelund C, Donfrancesco C, Krumholz HM, Nissinen A, Davis BR, Coady S, Whincup PH, Jørgensen T, Ducimetiere P, Trevisan M, Engström G, Crespo CJ, Meade TW, Visser M, Kromhout D, Kiechl S, Daimon M, Price JF, Gómez de la Cámara A, Wouter Jukema J, Lamarche B, Onat A, Simons LA, Kavousi M, Ben-Shlomo Y, Gallacher J, Dekker JM, Arima H, Shara N, Tipping RW, Rousset R, Brunner EJ, Koenig W, Sakurai M, Pavlovic J, Gansevoort RT, Nagel D, Goldbourt U, Barr ELM, Palmieri L, Njølstad I, Sato S, Monique Verschuren WM, Varghese CV, Graham I, Onuma O, Greenland P, Woodward M, Ezzati M, Psaty BM, Sattar N, Jackson R, Ridker PM, Cook NR, D'Agostino RB, Thompson SG, Danesh J, Di Angelantonio E. Emerging Risk Factors Collaboration. Equalization of four cardiovascular risk algorithms after systematic recalibration: individual-participant meta-analysis of 86 prospective studies. *Eur Heart J* 2019;**40**:621–631.
 31. Wolbers M, Koller MT, Wittman JCM, Steyerberg EW. Prognostic models with competing risks: methods and application to coronary risk prediction. *Epidemiology* 2009;**20**:555–561.
 32. Sanderson J, Thompson SG, White IR, Asplund T, Pennells L. Derivation and assessment of risk prediction models using case-cohort data. *BMC Med Res Methodol* 2013;**13**:113.
 33. Wolff RF, Moons KGM, Riley RD, Whiting PF, Westwood M, Collins GS, Reitsma JB, Kleijnen J, Mallett S, PROBAST Group†. PROBAST: a tool to assess the risk of bias and applicability of prediction model studies. *Ann Intern Med* 2019;**170**:51–58.
 34. Collins GS, Reitsma JB, Altman DG, Moons KGM. Transparent Reporting of a multivariable prediction model for Individual Prognosis Or Diagnosis (TRIPOD): the TRIPOD statement. *Ann Intern Med* 2015;**162**:55–63.
 35. Fry A, Littlejohns TJ, Sudlow C, Doherty N, Adamska L, Sprosen T, Collins R, Allen NE. Comparison of sociodemographic and health-related characteristics of UK Biobank participants with those of the general population. *Am J Epidemiol* 2017;**186**:1026–1034.
 36. Huang JY. Representativeness is not representative: addressing major inferential threats in the UK Biobank and other big data repositories. *Epidemiology* 2021;**32**:189–193.
 37. D'Agostino RB, Vasan RS, Pencina MJ, Wolf PA, Cobain M, Massaro JM, Kannel WB. General cardiovascular risk profile for use in primary care: the Framingham Heart Study. *Circulation* 2008;**117**:743–753.
 38. Woodward M, Brindle P, Tunstall-Pedoe H, SIGN Group on Risk Estimation. Adding social deprivation and family history to cardiovascular risk assessment: the ASSIGN score from the Scottish Heart Health Extended Cohort (SHHEC). *Heart* 2007;**93**:172–176.
 39. Matsushita K, Jassal SK, Sang Y, Ballew SH, Grams ME, Surapaneni A, Arnlöv J, Bansal N, Bozic M, Brenner H, Brunskill NJ, Chang AR, Chinnadurai R, Cirillo M, Correa A, Ebert N, Eckardt K-U, Gansevoort RT, Gutierrez O, Hadaegh F, He J, Hwang S-J, Jafar TH, Kayama T, Kovesdy CP, Landman GW, Levey AS, Lloyd-Jones DM, Major RW, Miura K, Muntner P, Nadkarni GN, Naimark DM, Nowak C, Ohkubo T, Pena MJ, Polkinghorne KR, Sabanayagam C, Sairenchi T, Schneider MP, Shalev V, Shlipak M, Solbu MD, Stempniewicz N, Tollitt J, Valdivielso JM, van der Leeuw J, Wang AY-M, Wen C-P, Woodward M, Yamagishi K, Yatsuya H, Zhang L, Schaeffner E, Coresh J. Incorporating kidney disease measures into cardiovascular risk prediction: development and validation in 9 million adults from 72 datasets. *EClinicalMedicine* 2020;**27**:100552.
 40. Xu Z, Arnold M, Stevens D, Kaptoge S, Pennells L, Sweeting MJ, Barrett J, Di Angelantonio E, Wood AM. Prediction of cardiovascular disease risk accounting for future initiation of statin treatment. *Am J Epidemiol* 2021;doi: 10.1093/aje/kwab031.
 41. Berkelmans GFN, Gudbjörnsdóttir S, Visseren FLJ, Wild SH, Franzen S, Chalmer J, Davis BR, Poulter NR, Spijkerman AM, Woodward M, Pressel SL, Gupta AK, van der Schouw YT, Svensson A-M, van der Graaf Y, Read SH, Eliasson B, Dorresteijn JAN. Prediction of individual life-years gained without cardiovascular events from lipid, blood pressure, glucose, and aspirin treatment based on data of more than 500 000 patients with Type 2 diabetes mellitus. *Eur Heart J* 2019;**40**:2899–2906.
 42. Read SH, van Diepen M, Colhoun HM, Halbesma N, Lindsay RS, McKnight JA, McAllister DA, Pearson ER, Petrie JR, Philip S, Sattar N, Woodward M, Wild SH, Scottish Diabetes Research Network Epidemiology Group. Performance of cardiovascular disease risk scores in people diagnosed with type 2 diabetes: external validation using data from the National Scottish Diabetes Register. *Diabetes Care* 2018;**41**:2010–2018.
 43. Muthes TB, Kimathi D, Richards GC, Etyang A, Nunan D, Williams V, Heneghan C. Factors influencing the implementation of cardiovascular risk scoring in primary care: a mixed-method systematic review. *Implement Sci* 2020;**15**:57.
 44. Jaspers NEM, Blaha MJ, Matsushita K, van der Schouw YT, Wareham NJ, Khaw K-T, Geisel MH, Lehmann N, Erbel R, Jöckel K-H, van der Graaf Y, Verschuren WMM, Boer JMA, Nambi V, Visseren FLJ, Dorresteijn JAN. Prediction of individualized lifetime benefit from cholesterol lowering, blood pressure lowering, antithrombotic therapy, and smoking cessation in apparently healthy people. *Eur Heart J* 2020;**41**:1190–1199.
 45. Karmali KN, Persell SD, Perel P, Lloyd-Jones DM, Berendsen MA, Huffman MD. Risk scoring for the primary prevention of cardiovascular disease. *Cochrane Database Syst Rev* 2017;**3**:CD006887.