

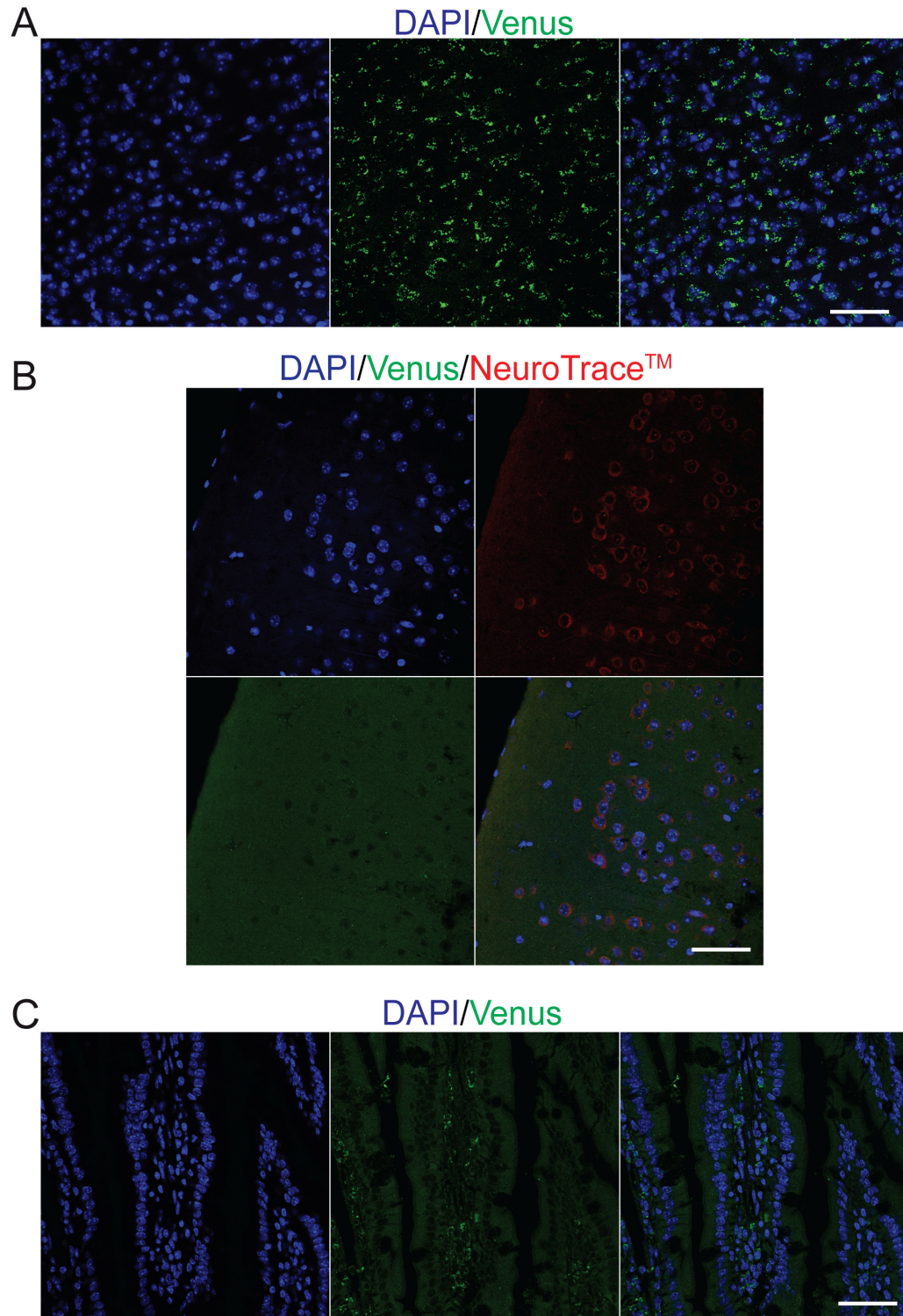
## Supplementary Information

# Synaptotagmin-13 is a neuroendocrine marker in brain, intestine and pancreas

Marta Tarquis-Medina<sup>1,2,3</sup>, Katharina Scheibner<sup>1,2</sup>, Ismael Gonzalez Garcia<sup>2,4</sup>,  
Aimée Bastidas-Ponce<sup>1,2</sup>, Michael Sterr<sup>1,2</sup>, Jessica Jaki<sup>1,2</sup>, Silvia Schirge<sup>1,2</sup>,  
Cristina García-Cáceres<sup>2,4,5</sup>, Heiko Lickert<sup>1,2,3\*</sup>, Mostafa Bakhti<sup>1,2\*</sup>

**Supplementary Table S1.** Primer and gRNA sequences

ID	Sequence 5' - 3'
EP38	CAAGATCCGCCACAACATCG
EP420	ATTGCATCGCATTGTCTGAGTAG
EP1240	ATTCAACGGCACAGTCAA
EP1241	TGGATGCAGGGATGATGT
EP 1640	CCTACCCGGTAGAATTCGACGAC
EP1774	CGAATTCCGGCTCACAAGTATC
EP1775	ACCAACTGCACCTGTAGTC
EP1771	GGGTATAGGCATGTGGACAG
EP1772	GGCTTGACTGGACAATGG
EP1773	GCGGACTTGAAGAAGTCG
gRNA#1	ACATGGCGATCTGCCGGCGTGGG
gRNA#10	TGTAGTCGCCACCTGCCACCGG



**Supplementary Figure S1. Negative control stainings.** (A) Maximum intensity projection image of cortex area from *Syt13<sup>VE/VE</sup>* mouse brain. Venus signal (green) is detectable even in the absence of Venus antibody. (B) Brain sections from WT animals stained with antibody against Venus (green) and NeuroTrace™ (red). No overlapping signals is observed between two channels. (C) Staining of duodenal section from WT animals shows a certain degree of unspecific background signal for Venus antibody. Scale bars 50  $\mu\text{m}$ .