

SUPPLEMENTARY FIGURES AND LEGENDS

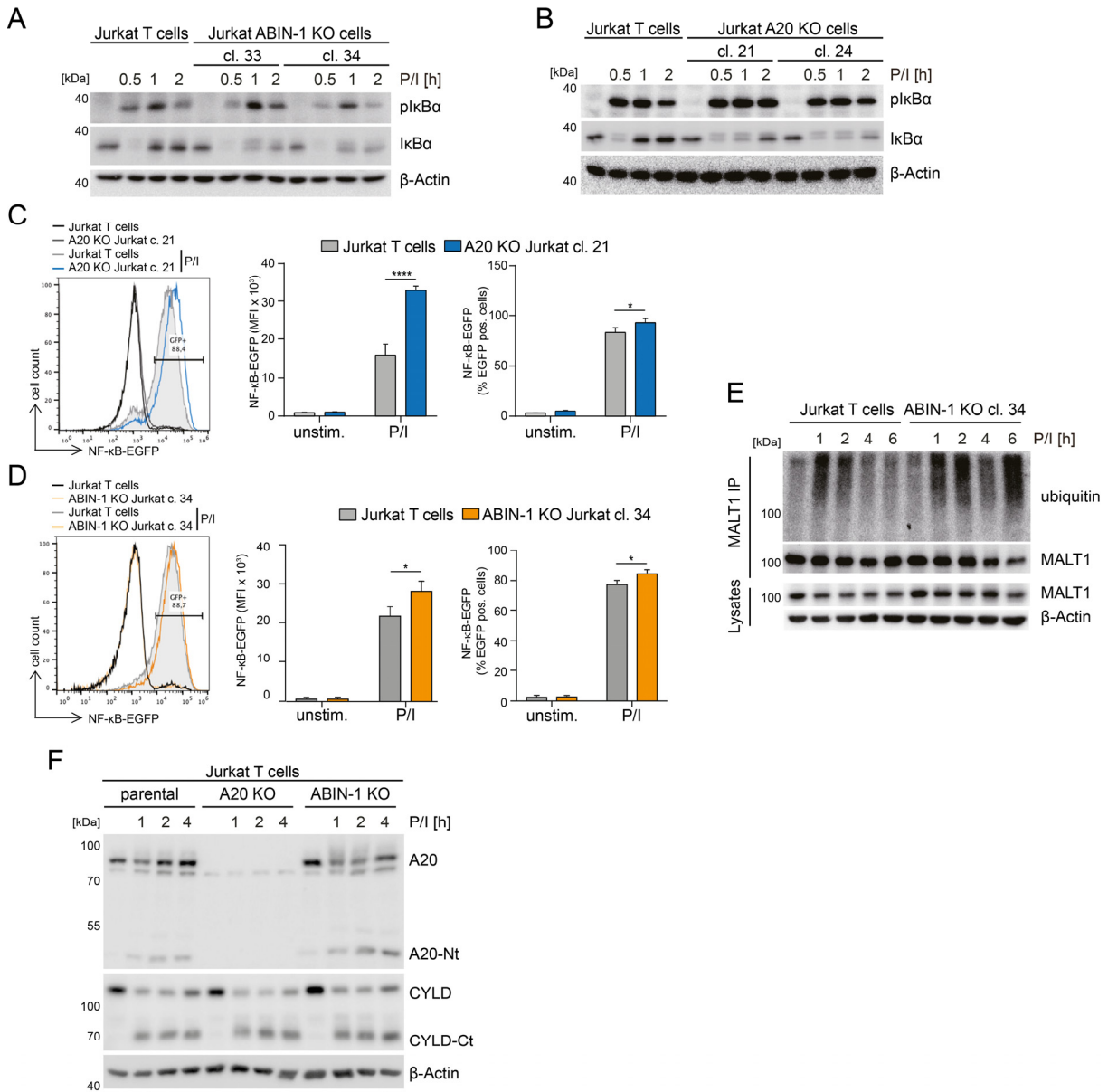


Figure S1: A, B NF-κB signaling in parental and KO Jurkat T cells following P/I stimulation analyzed by Western blot. **C, D** NF-κB-EGFP reporter activation in parental and KO Jurkat T cells following P/I stimulation (4 h) analyzed by flow cytometry. Quantification was done by calculating median fluorescence intensity (MFI) and number of EGFP positive cells. Data represent means \pm SEM (n=3) (C) or (n=5) (D) and quantification was done by two-way ANOVA with Tukey's multiple comparisons test, shown above comparisons. *p<0.05, ***p < 0.0001. **E** MALT1 polyubiquitination following P/I stimulation. **F** Cleavage of MALT1 substrates in parental, A20 and ABIN-1 KO Jurkat T cells after P/I stimulation analyzed by Western Blot.

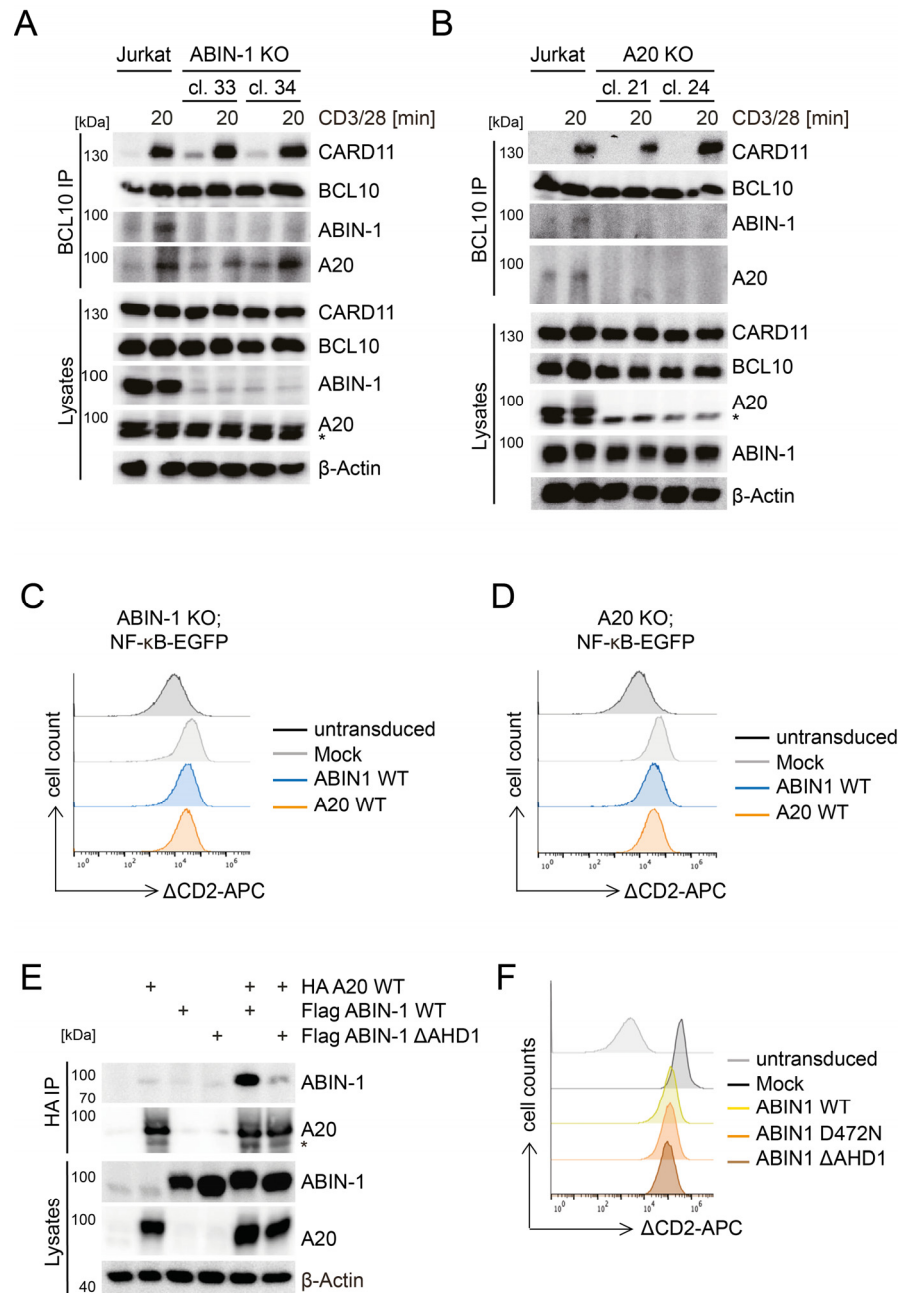


Figure S2: **A, B** BCL10 IP and detection of BCL10-bound CARD11, ABIN-1 and A20 in parental, ABIN-1 KO and A20 KO Jurkat T cells after CD3/CD28 stimulation analyzed by Western blot. **C, D** Transduction of ABIN-1 or A20 in ABIN-1 KO or A20 KO NF- κ B-EGFP reporter Jurkat T cells was monitored by the surface-marker h Δ CD2 by flow cytometry. **E** HA-A20 binding to Flag-ABIN-1 or Flag ABIN-1 Δ AHD1 mt after transfection in HEK 293 cells and HA-IP analyzed by Western blot. **F** Transduction of ABIN-1 wt and mutants in NF- κ B-EGFP reporter Jurkat T cells was monitored by the surface-marker h Δ CD2 by flow cytometry.

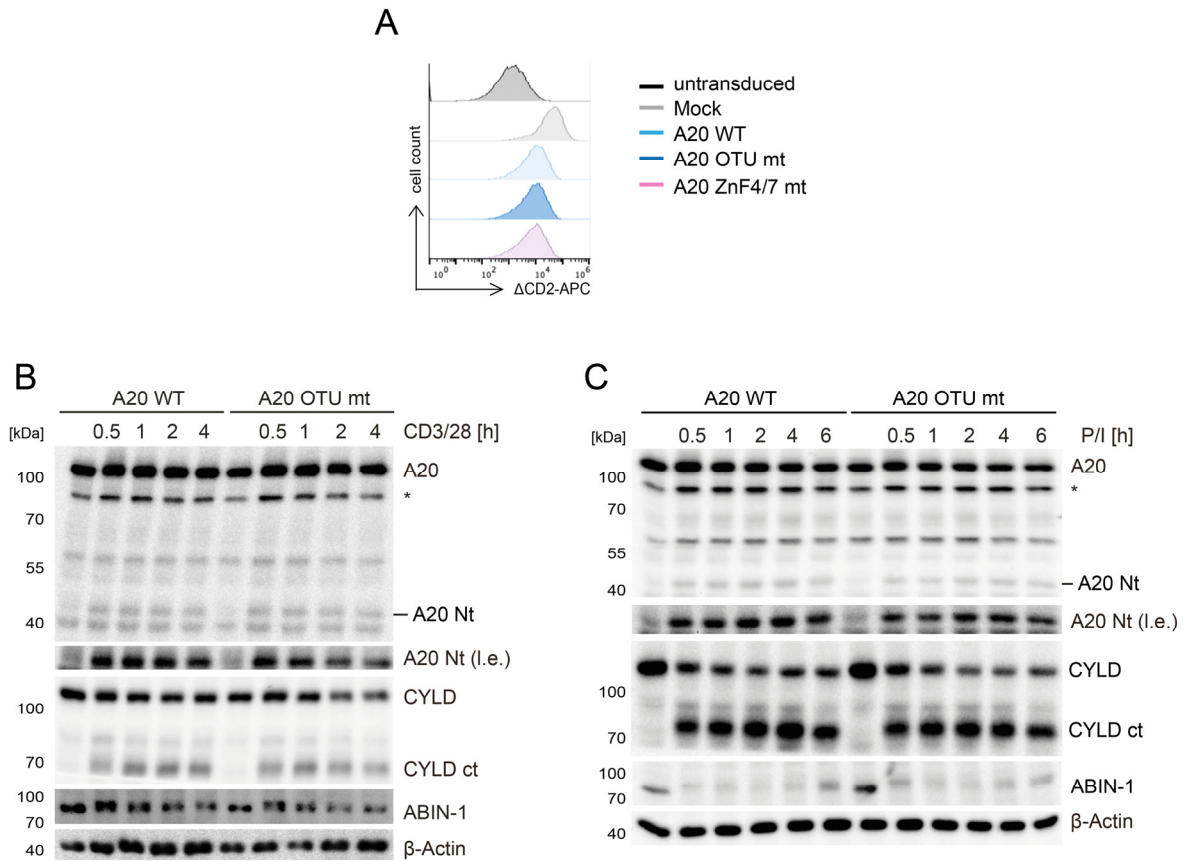


Figure S3: **A** Transduction of A20 wt and mutants in A20 KO NF- κ B-EGFP reporter Jurkat T cells was monitored by the surface-marker h Δ CD2 by flow cytometry. **B, C** ABIN-1 expression and A20 cleavage analyzed in A20 WT and OTU mutant expressing A20 KO Jurkat T cells after CD3/CD28 or P/I stimulation analyzed by Western blot.

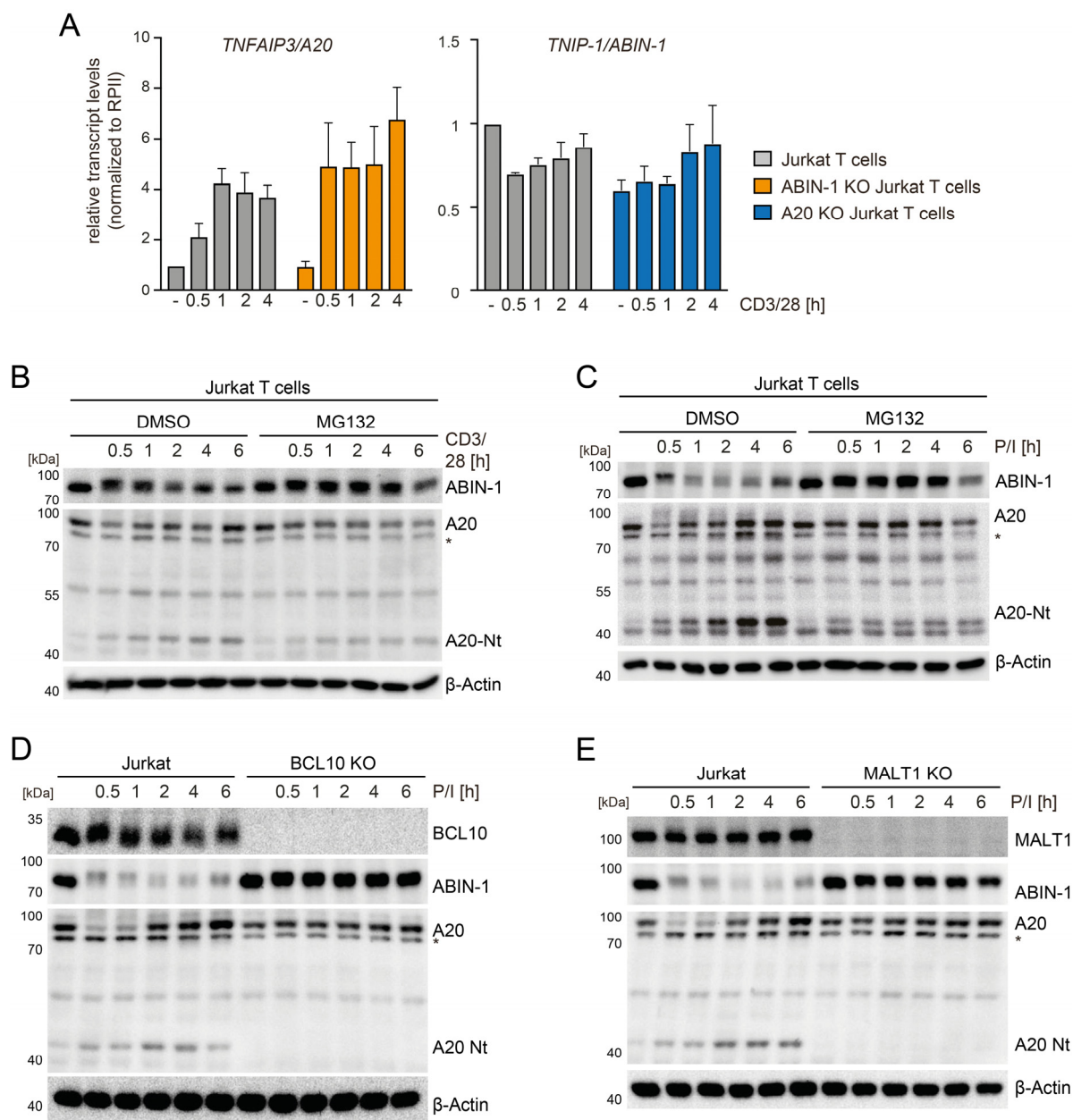


Figure S4: A Analyses of mRNA expression induction of *A20/TNFAIP3* and *ABIN-1/TNIP1* in parental and A20 and ABIN-1 KO Jurkat T cells after CD3/CD28 stimulation. Transcript levels were normalized to mRNA levels of *Pol2*. The data represent means \pm SEM (n=3). **B, C** Stability of ABIN-1 and A20 in Jurkat T cells after CD3/28 or P/I stimulation treated with proteasome inhibitor MG132 (25 μ M) analyzed by Western blot. **D, E** Stability of ABIN-1 and A20 in parental, BCL10 KO and MALT1 KO Jurkat T cells after P/I stimulation analyzed by Western blot.

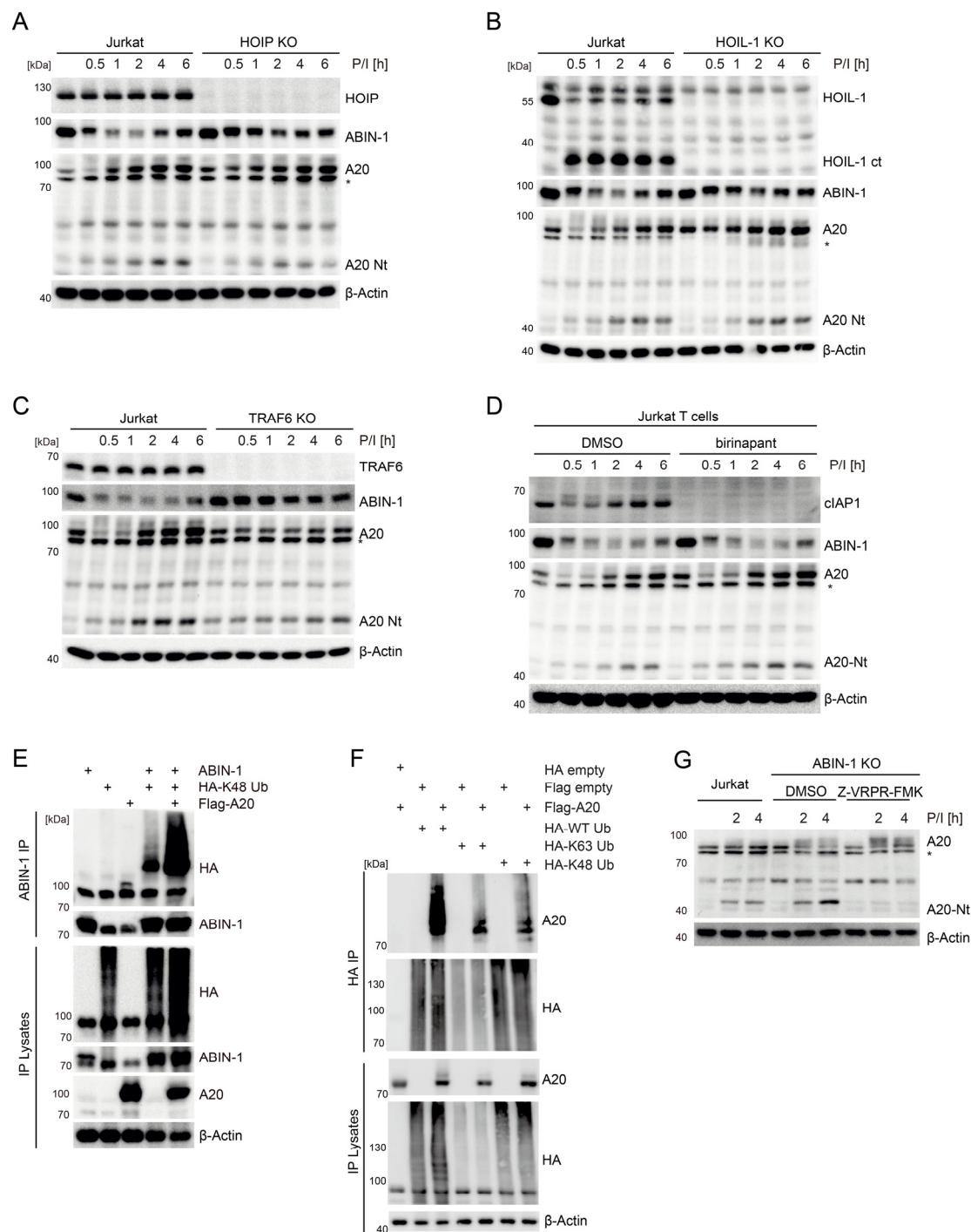


Figure S5: A-C Stability of ABIN-1 and A20 in parental, HOIP KO, HOIL-1 KO and TRAF6 KO Jurkat T cells after P/I stimulation analyzed by Western blot. **D** Stability of ABIN-1 and A20 in Jurkat T cell treated with the SMAC mimetic birinapant (2.5 μ M) after P/I stimulation analyzed by Western blot. **E** ABIN-1 ubiquitination in HEK293 cells transfected with Flag-A20 WT together with ABIN-1 and HA-K48Ub (K48-only) after ABIN-1-IP analyzed by Western blot. **F** A20 ubiquitination in HEK293 cells transfected with Flag-A20 WT together with HA-WT Ub, HA-K63 Ub (K63-only), HA-K48 Ub (K48-only) after HA-IP analyzed by Western blot. **G** A20 cleavage in Jurkat T cells treated with MALT1 inhibitor Z-VRPR-FMK (75 μ M) following P/I stimulation analyzed by Western blot.