

Figure 2. Pathways unique to rhinitis alone. Pathways were classified in broad functional families (colored rectangles).

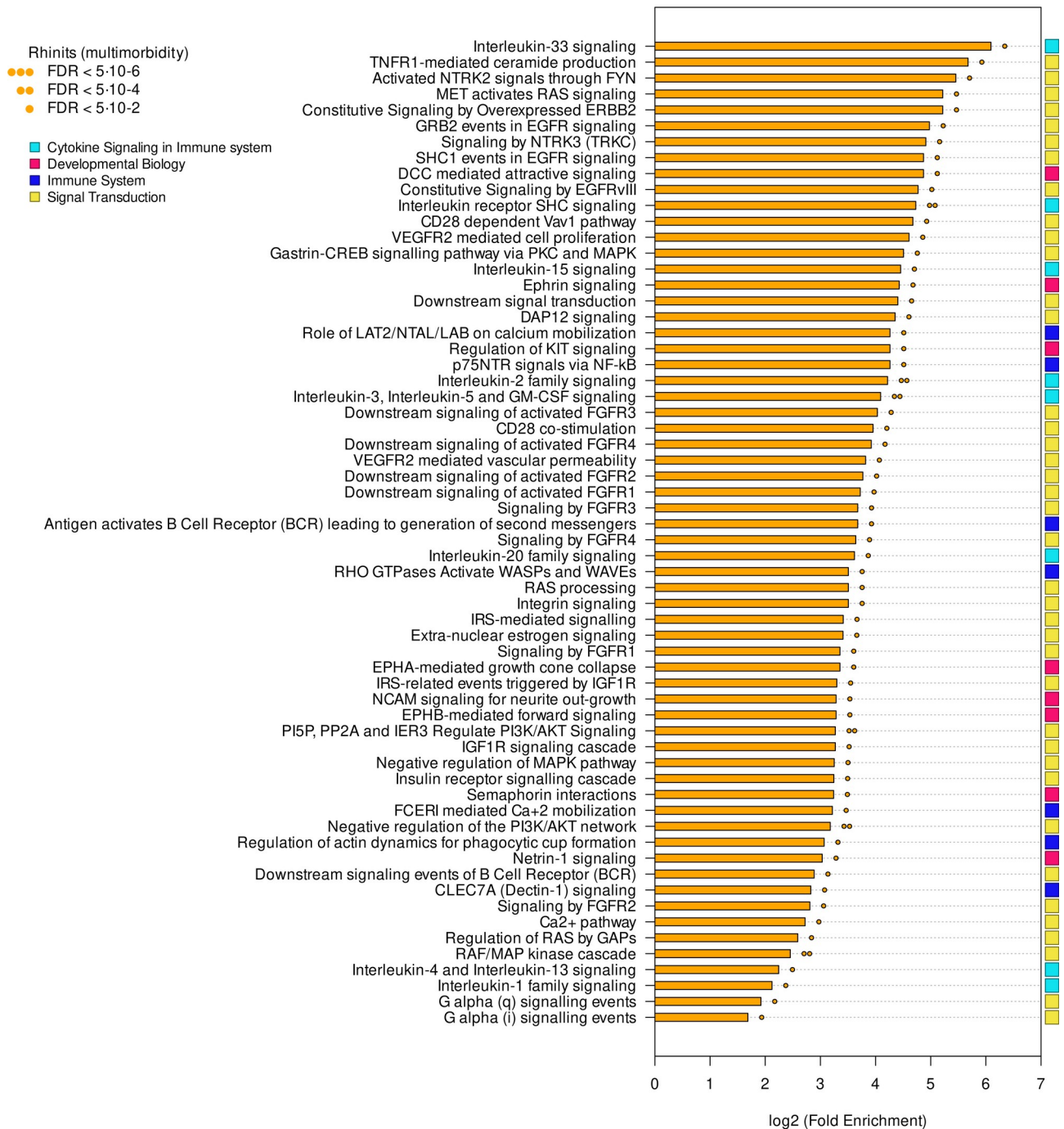


Figure 3. Pathways unique to rhinitis in multimorbidity. Pathways were classified in broad functional families (colored rectangles).

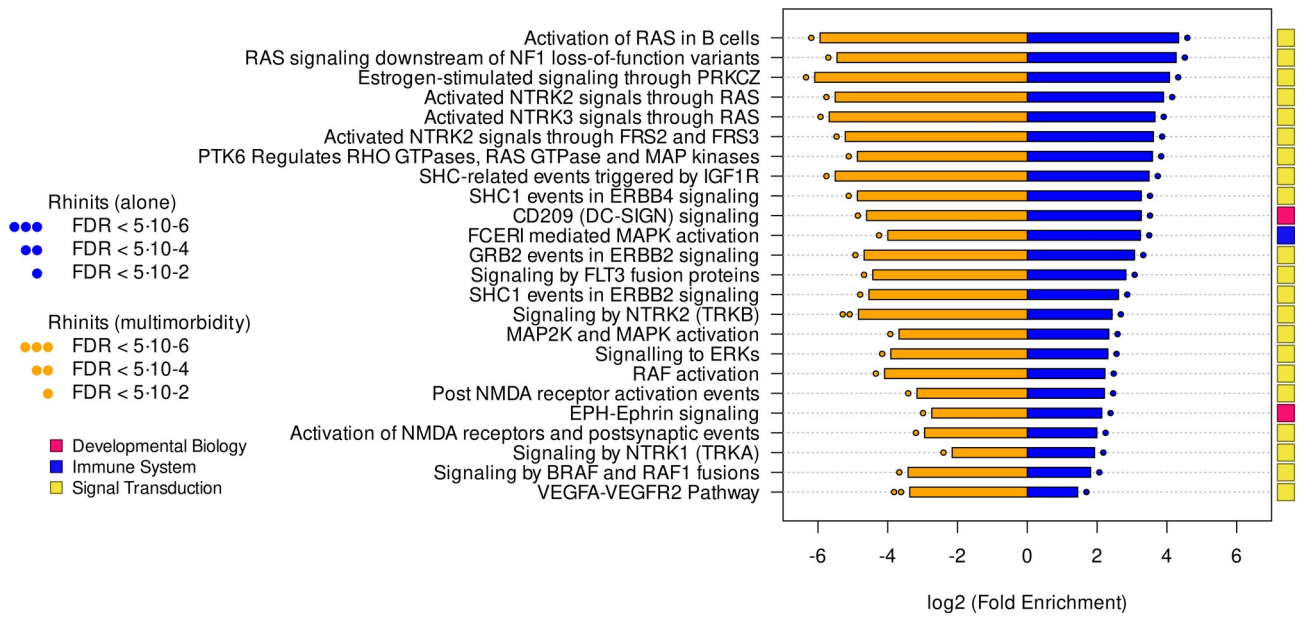


Figure 4: Pathways common to rhinitis alone and rhinitis in multimorbidity. Pathways were classified in broad functional families (colored rectangles).