

RESEARCH ARTICLE

Global patterns in endemism and vulnerability of soil fungi

Leho Tedersoo¹  | Vladimir Mikryukov² | Alexander Zizka³ | Mohammad Bahram⁴ |
 Niloufar Hagh-Doust² | Sten Anslan² | Oleh Prylutskyi⁵ | Manuel Delgado-Baquerizo⁶ |
 Fernando T. Maestre⁷ | Jaan Pärn² | Maarja Öpik² | Mari Moora² | Martin Zobel² |
 Mikk Espenberg² | Ülo Mander² | Abdul Nasir Khalid⁸ | Adriana Corrales⁹ |
 Ahto Agan¹⁰ | Aída-M. Vasco-Palacios¹¹ | Alessandro Saitta¹² | Andrea C. Rinaldi¹³ |
 Annemieke Verbeken¹⁴ | Bobby P. Sulistyo¹⁵ | Boris Tamgnoue¹⁶ | Brendan Furneaux¹⁷ |
 Camila Duarte Ritter¹⁸ | Casper Nyamukondiwa¹⁹ | Cathy Sharp²⁰ | César Marín²¹ |
 Daniyal Gohar¹ | Darta Klavina²² | Dipon Sharmah²³ | Dong Qin Dai²⁴ |
 Eduardo Nouhra²⁵ | Elisabeth Machteld Biersma²⁶ | Elisabeth Rähn¹⁰ |
 Erin K. Cameron²⁷ | Eske De Crop¹⁴ | Eveli Otsing¹ | Evgeny A. Davydov²⁸ |
 Felipe E. Albornoz²⁹ | Francis Q. Brearley³⁰ | Franz Buegger³¹ | Geoffrey Zahn³² |
 Gregory Bonito³³ | Inga Hiiesalu² | Isabel C. Barrio³⁴ | Jacob Heilmann-Clausen³⁵ |
 Jelena Ankuda³⁶ | John Y. Kupagme¹ | Jose G. Maciá-Vicente³⁷ | Joseph
 Djeugap Fovo¹⁶ | József Geml³⁸ | Juha M. Alatalo³⁹ | Julieta Alvarez-Manjarrez⁴⁰ |
 Kadri Põldmaa² | Kadri Runnel² | Kalev Adamson¹⁰ | Kari Anne Bråthen⁴¹ |
 Karin Pritsch³¹ | Kassim I. Tchan⁴² | Kęstutis Armolaitis³⁶ | Kevin D. Hyde⁴³ |
 Kevin K. Newsham⁴⁴ | Kristel Panksep⁴⁵ | Adebola A. Lateef⁴⁶ | Liis Tiirmann¹ |
 Linda Hansson⁴⁷ | Louis J. Lamit^{48,49} | Malka Saba⁵⁰ | Maria Tuomi⁴¹ |
 Marieka Gryzenhout⁵¹ | Marijn Bauters⁵² | Meike Piepenbring⁵³ |
 Nalin Wijayawardene²⁴ | Nourou S. Yorou⁴² | Olavi Kurina⁵⁴ | Peter E. Mortimer⁵⁵ |
 Peter Meidl⁵⁶ | Petr Kohout⁵⁷ | Rolf Henrik Nilsson⁵⁸ | Rasmus Puusepp¹ |
 Rein Drenkhan¹⁰ | Roberto Garibay-Orijel⁵⁹ | Roberto Godoy⁶⁰ | Saad Alkahtani⁶¹ |
 Saleh Rahimlou¹ | Sergey V. Dudov⁶² | Sergei Pölme¹ | Soumya Ghosh⁵¹ |
 Sunil Mundra⁶³ | Talaat Ahmed³⁹ | Tarquin Netherway⁴ | Terry W. Henkel⁶⁴ |
 Tomas Roslin⁴ | Vincent Ntezirayayo⁶⁵ | Vladimir E. Fedosov⁶² | Vladimir G. Onipchenko⁶² |
 W. A. Erandi Yasanthika⁴³ | Young Woon Lim⁶⁶ | Nadejda A. Soudzilovskaia⁶⁷ |
 Alexandre Antonelli⁶⁸ | Urmas Kõljalg² | Kessy Abarenkov⁶⁹

¹Mycology and Microbiology Center, University of Tartu, Tartu, Estonia²Institute of Ecology and Earth Sciences, University of Tartu, Tartu, Estonia³Department of Biology, Philipps-University, Marburg, Germany⁴Department of Ecology, Swedish University of Agricultural Sciences, Uppsala, Sweden

This is an open access article under the terms of the [Creative Commons Attribution](https://creativecommons.org/licenses/by/4.0/) License, which permits use, distribution and reproduction in any medium, provided the original work is properly cited.

© 2022 The Authors. *Global Change Biology* published by John Wiley & Sons Ltd.

- ⁵Department of Mycology and Plant Resistance, School of Biology, V.N. Karazin Kharkiv National University, Kharkiv, Ukraine
- ⁶Laboratorio de Biodiversidad y Funcionamiento Ecosistémico, Instituto de Recursos Naturales y Agrobiología de Sevilla (IRNAS), CSIC, and Unidad Asociada CSIC-UPO (BioFun), Universidad Pablo de Olavide, Sevilla, Spain
- ⁷Departamento de Ecología, Instituto Multidisciplinar para el Estudio del Medio 'Ramón Margalef', Universidad de Alicante, Alicante, Spain
- ⁸Institute of Botany, University of the Punjab, Lahore, Pakistan
- ⁹Centro de Investigaciones en Microbiología y Biotecnología-UR (CIMBIUR), Universidad del Rosario, Bogotá, Colombia
- ¹⁰Institute of Forestry and Engineering, Estonian University of Life Sciences, Tartu, Estonia
- ¹¹BioMicro, Escuela de Microbiología, Universidad de Antioquia UdeA, Medellín, Antioquia, Colombia
- ¹²Department of Agricultural, Food and Forest Sciences, University of Palermo, Palermo, Italy
- ¹³Department of Biomedical Sciences, University of Cagliari, Cagliari, Italy
- ¹⁴Department Biology, Ghent University, Ghent, Belgium
- ¹⁵Department of Biomedicine, Indonesia International Institute for Life Sciences, Jakarta, Indonesia
- ¹⁶Department of Crop Science, University of Dschang, Dschang, Cameroon
- ¹⁷Department of Ecology and Genetics, Uppsala University, Uppsala, Sweden
- ¹⁸Departamento de Zootecnia, Universidade Federal do Paraná, Curitiba, Brazil
- ¹⁹Department of Biological Sciences and Biotechnology, Botswana International University of Science and Technology, Palapye, Botswana
- ²⁰Natural History Museum of Zimbabwe, Bulawayo, Zimbabwe
- ²¹Centro de Investigación e Innovación para el Cambio Climático (CiiCC), Universidad Santo Tomás, Santiago, Chile
- ²²Latvian State Forest Research Institute Silava, Salaspils, Latvia
- ²³Department of Botany, Jawaharlal Nehru Rajkeeya Mahavidyalaya, Pondicherry University, Port Blair, India
- ²⁴College of Biological Resource and Food Engineering, Qujing Normal University, Qujing, China
- ²⁵Instituto Multidisciplinario de Biología Vegetal (CONICET), Universidad Nacional de Córdoba, Córdoba, Argentina
- ²⁶Natural History Museum of Denmark, Copenhagen, Denmark
- ²⁷Department of Environmental Science, Saint Mary's University, Halifax, Canada
- ²⁸Altai State University, Barnaul, Russia
- ²⁹CSIRO Land and Water, Wembley, Western Australia, Australia
- ³⁰Department of Natural Sciences, Manchester Metropolitan University, Manchester, UK
- ³¹Helmholtz Zentrum München, Neuherberg, Germany
- ³²Utah Valley University, Orem, Utah, USA
- ³³Plant, Soil and Microbial Sciences, Michigan State University, East Lansing, Michigan, USA
- ³⁴Faculty of Natural and Environmental Sciences, Agricultural University of Iceland, Hvanneyri, Iceland
- ³⁵Center for Macroecology, Evolution and Climate, University of Copenhagen, Copenhagen, Denmark
- ³⁶Department of Silviculture and Ecology, Institute of Forestry of Lithuanian Research Centre for Agriculture and Forestry (LAMMC), Girionys, Lithuania
- ³⁷Plant Ecology and Nature Conservation, Wageningen University & Research, Wageningen, The Netherlands
- ³⁸ELKH-EKKE Lendület Environmental Microbiome Research Group, Eszterházy Károly Catholic University, Eger, Hungary
- ³⁹Environmental Science Center, Qatar University, Doha, Qatar
- ⁴⁰Biology Department, Stanford University, Stanford, California, USA
- ⁴¹Department of Arctic and Marine Biology, The Arctic University of Norway, Tromsø, Norway
- ⁴²Research Unit Tropical Mycology and Plants-Soil Fungi Interactions, University of Parakou, Parakou, Benin
- ⁴³Center of Excellence in Fungal Research, Mae Fah Luang University, Chiang Rai, Thailand
- ⁴⁴NERC British Antarctic Survey, Cambridge, UK
- ⁴⁵Chair of Hydrobiology and Fishery, Estonian University of Life Sciences, Tartu, Estonia
- ⁴⁶Department of Plant Biology, University of Ilorin, Ilorin, Nigeria
- ⁴⁷Gothenburg Centre for Sustainable Development, Gothenburg, Sweden
- ⁴⁸Department of Biology, Syracuse University, Syracuse, New York, USA
- ⁴⁹Department of Environmental and Forest Biology, State University of New York College of Environmental Science and Forestry, Syracuse, New York, USA
- ⁵⁰Department of Plant Sciences, Quaid-i-Azam University, Islamabad, Pakistan
- ⁵¹Department of Genetics, University of the Free State, Bloemfontein, South Africa
- ⁵²Department of Environment, Ghent University, Ghent, Belgium
- ⁵³Mycology Working Group, Goethe University Frankfurt am Main, Frankfurt am Main, Germany
- ⁵⁴Institute of Agricultural and Environmental Sciences, Estonian University of Life Sciences, Tartu, Estonia
- ⁵⁵Center For Mountain Futures, Kunming Institute of Botany, Chinese Academy of Sciences, Kunming, China
- ⁵⁶Institut für Biologie, Freie Universität Berlin, Berlin, Germany

- ⁵⁷Institute of Microbiology, Czech Academy of Sciences, Prague, Czech Republic
- ⁵⁸Gothenburg Global Biodiversity Centre, University of Gothenburg, Gothenburg, Sweden
- ⁵⁹Instituto de Biología, Universidad Nacional Autónoma de México, Ciudad de México, Mexico
- ⁶⁰Instituto Ciencias Ambientales y Evolutivas, Universidad Austral de Chile, Valdivia, Chile
- ⁶¹College of Science, King Saud University, Riyadh, Saudi Arabia
- ⁶²Department of Ecology and Plant Geography, Moscow Lomonosov State University, Moscow, Russia
- ⁶³Department of Biology, College of Science, United Arab Emirates University, Abu Dhabi, UAE
- ⁶⁴Department of Biological Sciences, California State Polytechnic University, Arcata, California, USA
- ⁶⁵Department of Food Science and Technology, University of Burundi, Bujumbura, Burundi
- ⁶⁶School of Biological Sciences and Institute of Microbiology, Seoul National University, Seoul, South Korea
- ⁶⁷Centre for Environmental Sciences, Hasselt University, Hasselt, Belgium
- ⁶⁸Royal Botanic Gardens, Kew, UK
- ⁶⁹University of Tartu Natural History Museum, Tartu, Estonia

Correspondence

Leho Tedersoo, Mycology and Microbiology Center, University of Tartu, Tartu, Estonia.
Email: leho.tedersoo@ut.ee

Abstract

Fungi are highly diverse organisms, which provide multiple ecosystem services. However, compared with charismatic animals and plants, the distribution patterns and conservation needs of fungi have been little explored. Here, we examined endemism patterns, global change vulnerability and conservation priority areas for functional groups of soil fungi based on six global surveys using a high-resolution, long-read metabarcoding approach. We found that the endemism of all fungi and most functional groups peaks in tropical habitats, including Amazonia, Yucatan, West-Central Africa, Sri Lanka, and New Caledonia, with a negligible island effect compared with plants and animals. We also found that fungi are predominantly vulnerable to drought, heat and land-cover change, particularly in dry tropical regions with high human population density. Fungal conservation areas of highest priority include herbaceous wetlands, tropical forests, and woodlands. We stress that more attention should be focused on the conservation of fungi, especially root symbiotic arbuscular mycorrhizal and ectomycorrhizal fungi in tropical regions as well as unicellular early-diverging groups and macrofungi in general. Given the low overlap between the endemism of fungi and macroorganisms, but high conservation needs in both groups, detailed analyses on distribution and conservation requirements are warranted for other microorganisms and soil organisms.

KEYWORDS

biodiversity, biogeography, climate change, conservation priorities, global change vulnerability, global maps, mycorrhizal fungi, pathogens, saprotrophs

1 | INTRODUCTION

Human activities affect nearly all habitats through changes in climate and land-use, impacting vegetation cover and composition. These changes negatively influence many plant and animal species that have narrow environmental tolerances and limited dispersal capacities across anthropogenic landscapes (Schulte to Bühne et al., 2021). Anthropogenic impacts most strongly affect endemic species—that is, taxa with small distribution ranges and typically narrow ecological niches (Brook et al., 2008). The diversity of

endemic plants and animals is higher in areas characterized by long-term climatic stability, high precipitation, environmental heterogeneity and insularity. Unfortunately, these areas—which are mostly located in the tropics and subtropics—usually coincide with major human degradations of the environment (Kier et al., 2009; Sandel et al., 2020; Stein et al., 2014). Unlike the wealth of information that has accumulated for plants and animals, global patterns of fungal endemism and vulnerability to environmental change remain virtually unknown (Cameron et al., 2019; Guerra, Bardgett, et al., 2021; but see Davison et al., 2015). Only a few

Alnus-associated ectomycorrhizal (EcM) fungi (Pöhlme et al., 2013) and fewer than 100 soil-borne saprotrophic and pathogenic fungi (Egidi et al., 2019) can be considered to be cosmopolitan, suggesting that the vast majority of fungal species may be endemic at least at a subcontinental scale (Talbot et al., 2014). This paucity of knowledge about the endemism and vulnerability of fungi to global change is alarming, given the fundamental roles of fungi in soil carbon and nutrient cycling processes and as devastating crop and forest pathogens (Crowther et al., 2019; Wardle & Lindahl, 2014).

Comparative studies indicate that aboveground and belowground biodiversity is driven by different environmental predictors at local and global scales (Cameron et al., 2019; Le Provost et al., 2021). This suggests differential responses of macro- and microorganisms to land use and climate change (Guerra, Delgado-Baquerizo, et al., 2021). Despite the vast global climatic gradients, soil pH appears to be the main driver of microbial diversity. For example, fungal richness peaks at weakly acidic soils (Tedersoo, Bahram, Pöhlme, et al., 2014; Tedersoo et al., 2022), whereas bacteria and protists are highest in neutral soils (Aslani et al., 2022; Bahram et al., 2018; Delgado-Baquerizo, Oliverio, et al., 2018). Another study that did not measure pH found that the fungal diversity peaked at lower temperatures, but dominant fungal species were most-influenced by mean annual temperature (Větrovský et al., 2019). As for plants and animals (Foden et al., 2019; Pacifici et al., 2015), soil fungal communities are likely vulnerable to global change drivers. For instance, high temperature stress (Barcnas-Moreno et al., 2009; Malcolm et al., 2008; Misiak et al., 2021) and prolonged drought (de Vries et al., 2018; Schmidt et al., 2018) can alter fungal growth, functionality and community composition. Likewise, changes in land use that result in habitat fragmentation may lead to shifts in the prevalence of pathogenic, mutualistic and free-living fungal groups (Brinkmann et al., 2019; Le Provost et al., 2021; Makiola et al., 2019; Rodriguez-Ramos et al., 2021).

Compared with macroorganisms, information about the conservation needs of fungi and other microbes is very limited. While thousands of plant and animal species are listed as threatened on the International Union for Conservation of Nature (IUCN) global Red List, only 262 out of an estimated 2.2–3.8 million fungal species (Hawksworth & Lücking, 2017) have been listed as such. The majority of these are from high-income countries in temperate regions (IUCN, 2021) and are from fungal groups that form conspicuous macroscopic fruiting bodies (Cao et al., 2021). However, the vast majority of fungi produce no, microscopic or inconspicuous fruiting bodies and are therefore difficult to survey using traditional morphology- and culturing-based identification methods, which have hampered assessments of their distribution (Gonçalves et al., 2021). Consequently, we have no information for which parts of the world fungal conservation needs are the highest.

Here we used the most advanced high-resolution sequencing technology to globally survey soil fungi and assess their endemism and vulnerability to global change. We hypothesized that (i) as observed for plants and animals (Rosauer & Jetz, 2015), the endemism

of fungi is relatively higher in the tropics due to greater regional-scale climatic stability and also coincides with that of plants and animals and (ii) the vulnerability of fungi to global change is highest in habitats experiencing the strongest warming effects (e.g., polar regions) and intensive land use (e.g., dry tropics). We predicted that endemism and vulnerability patterns are more evident for macrofungi that require abundant resources for building reproductive structures and for obligately biotrophic groups compared with saprotrophic microfungi groups. From these findings, we identify regions where fungal conservation may be the most warranted, and propose global conservation priorities.

2 | MATERIALS AND METHODS

2.1 | Data sets

To study fungal endemism and vulnerability to global change, we combined data from the Global Soil Mycobiome consortium (GSMc) open data set (Tedersoo, Mikryukov, et al., 2021) with materials from five other global soil biological surveys (Figure 1)—BIODESERT (Maestre et al., 2022), MUSGONET (including the natural sites in Delgado-Baquerizo et al., 2021), CLIMIFUN (Bastida et al., 2021), GlobalAM (Davison et al., 2021), GlobalWetlands (Bahram et al., 2022) as well as Sanger sequence data from soil-inhabiting fungi obtained from the UNITE database (Nilsson et al., 2019) covering GenBank. We obtained soil DNA from these five surveys and performed new DNA metabarcoding analyses following the protocols outlined for the GSMc data set (Tedersoo, Mikryukov, et al., 2021).

All data sets included information on geographical coordinates and soil pH. Based on geographical coordinates, we assigned the following climatic and land-cover metadata to the samples: (i) CHELSA v2.1 bioclimatic variables for the period 1981–2010 (Karger et al., 2017), (ii) CHELSA-TraCE21k v1.0. for the last glacial maximum (LGM; Karger et al., 2021), and (iii) CHELSA v2.1 climate extrapolations for the year 2070 following the RCP8.5 global warming scenario with SSP5 socioeconomic conditions and the GFDL-ESM4 global circulation model (Karger et al., 2020); (iv) normalized difference vegetation index (NDVI; Filippini et al., 2018); (v) SoilGrids v.2 soil pH from 0 to 5 cm depth (Poggio et al., 2021); (vi) land-cover type using Copernicus classification v.3 (Buchhorn et al., 2020) for the year 2015; and (vii) human footprint index based on the Land-Use Harmonization (LUH2; Hurtt et al., 2020) for the year 2015 extrapolation. Based on original descriptions of vegetation (age, cover, relative abundance of species, fire history) or remote sensing data (Google Earth Pro; <https://earth.google.com/>), samples were assigned to biomes (Olson et al., 2001) and land-cover types. Based on z-transformed differences in all 19 present and LGM bioclimatic variables, we calculated for each sample an averaged LGM climate change index. Furthermore, for each sample we estimated the human footprint index as the cumulative sum of land-use state transitions, with the year 1960 used as a baseline.

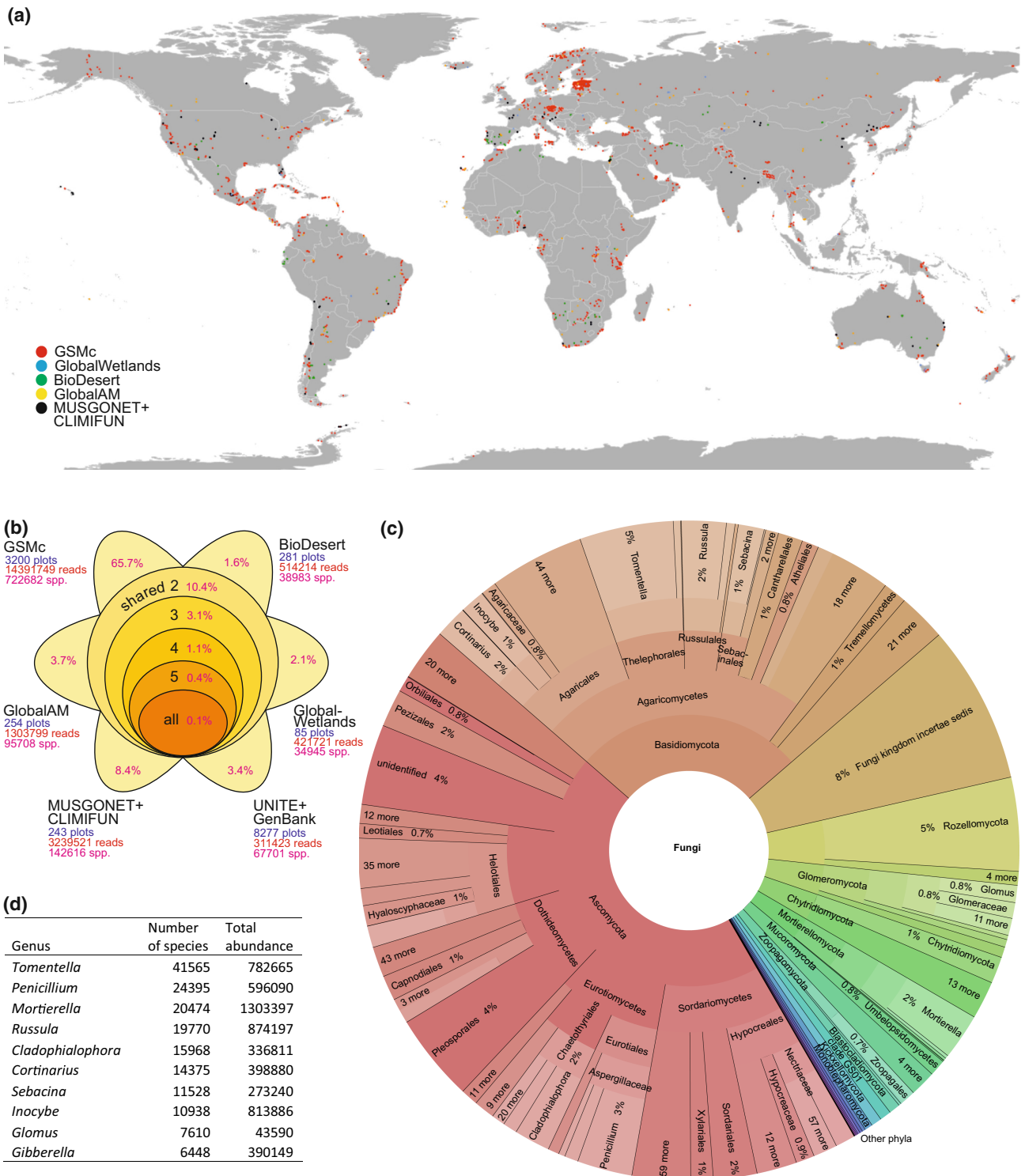


FIGURE 1 Distribution of samples and fungal species across data sets. (a) Global sampling map, with different colours representing different data sets; (b) species distribution of fungi among data sets, with the proportion of unique and shared species indicated; (c) Krona chart indicating the taxonomic distribution of fungal species (interactive chart can be browsed at <https://plutof.ut.ee/#/doi/10.15156/BIO/2483900>); and (d) species richness and total read abundance of the top 10 most diverse fungal genera.

2.2 | Molecular analysis and functional assignments

To infer fungal species and taxonomy, we used a long-read sequencing approach involving the ribosomal RNA 18S gene V9

subregion, internal transcribed spacer 1 (ITS1), 5.8S gene and ITS2 to enhance taxonomic resolution and accuracy. We used degenerate, universal eukaryotic primers to cover as many divergent taxa within the fungi and micro-eukaryotes as possible (Tedersoo, Albertsen, et al., 2021). The amplicon samples were prepared in

82 PacBio SMRTbell sequencing libraries and sequenced on 48 PacBio Sequel 8M SMRT cells. The obtained reads were quality-filtered, demultiplexed to samples, trimmed to include only the full-length ITS region, and clustered to operational taxonomic units (conditionally termed as species) at 98% sequence similarity, which roughly corresponds to species-level divergence. Taxonomy was assigned based on information from the 10 best BLASTn matches against the UNITE 9.1 beta data set (<https://doi.org/10.15156/BIO/1444285>). The resulting species-by-sample matrices were manually checked library-wise for external and cross-contamination and rates of index switching artefacts. We excluded several samples for which we suspected contamination, and removed rare occurrences of dominant species using the following thresholds: abundances = 1 for species with total abundance of >99 and abundances = 2 for species with total abundance of >999.

Based on FungalTraits 1.3 (Pölme et al., 2020), species belonging to the kingdom Fungi were assigned to functional groups based on ecological or physiological characters: (i) arbuscular mycorrhizal (AM) fungi (including all Glomeromycota but excluding all Endogonomycetes, owing to the paucity of information distinguishing AM species from free-living species); (ii) EcM fungi (excluding dubious lineages); (iii) non-EcM Agaricomycetes (mostly saprotrophic fungi with usually macroscopic fruiting bodies); (iv) molds (including Mortierellales, Mucorales, Umbelopsidales and Aspergillaceae and Trichocomaceae of Eurotiales and *Trichoderma* of Hypocreales); (v) putative pathogens (including plant, animal and fungal pathogens as primary or secondary lifestyles); (vi) opportunistic human parasites (OHPs; excluding Mortierellales); (vii) yeasts (excluding dimorphic yeasts); and (viii) other unicellular (non-yeast) fungi (including chytrids, aphids, rozellids, and other early-diverging fungal lineages). Other groups such as lichen-forming fungi were not considered, owing to their relative infrequency in the soil samples and across ecoregions. Among these groups, mostly non-EcM Agaricomycetes and EcM fungi include many red-listed species of macrofungi, with fruiting bodies that are conch-shaped (polypores), resupinate (corticoids), or stipitate (agarics, boletes, etc.) and are hence considered to be of higher conservation interest because of their charismatic appearance (Cao et al., 2021; IUCN, 2021). Here, we test whether this approach is also justified from the endemism and vulnerability perspectives.

2.3 | Endemism

To infer endemism patterns in fungi, samples were assigned to ecological regions (Olson et al., 2001) based on their geographical coordinates, allowing a 10-km buffer zone between terrestrial ecological regions and water (due to low resolution of the map layers in shore areas). Based on climatic and floristic similarities and data availability (Kier et al., 2009), the ecological regions were further subjectively aggregated into larger areas or split into smaller, geographically distinct units, which we refer to as ecoregions (Figure 2;

Table S1). Each of the 174 ecoregions covered 1–45 soil samples, with surplus samples excluded randomly from two intensively sampled ecoregions. The ecoregions were allowed to include unlimited Sanger-sequenced sites from UNITE. We distinguished the ecoregions located on islands and determined their minimum distance to nearest continents or larger islands using the Google Earth Pro ground distance measurement tool.

Using the *betapart* package v.1.5.4 (Baselga & Orme, 2012) of R v.4.1.10 (R Core Team, 2021), five indices of endemism—the number of endemic species (weight = 16.7%), proportion of endemic species (weight = 16.7%), mean maximum geographical range of taxa (weight = 33.3%), Jaccard index (weight = 16.7%) and beta-sim index (weight = 16.7%)—were calculated based on the community matrix (Crisp et al., 2001; Villéger & Brosse, 2012; Box S1). The first two and the last two indices reflect similar aspects of endemism and were therefore downweighed when averaging these indices based on z-score transformation. To account for differences in sampling intensity, we calculated residuals for the numbers of all species and endemic species by regressing these against the logarithmically transformed number of samples and sequencing depth (Table S2).

Of the indices used, only the number of endemic taxa and proportion of endemic taxa were significantly positively correlated with fungal species richness ($r = .707$ and $r = .212$, respectively). Furthermore, species richness was not included among the best predictors of averaged endemism, indicating that these metrics are independent. Endemism indices of all fungi and functional groups were subjected to random forest machine learning analysis to pre-select the 10 most important environmental variables for general linear modelling (GLM). We used the variance (as coefficient of variation) and averaged values of bioclimatic variables, area, latitude, longitude, altitude, and soil pH as well as continents (dummy variables) to explain endemism. GLMs were fitted using second-order polynomial terms for continuous variables. Only significant variables ($p < .050$; $r^2 > .020$) were kept in the final models. Based on the predictions revealed by GLMs, endemism maps were constructed using the *sf* v.1.0.5 package (Pebesma, 2018) of R.

2.4 | Global change vulnerability

Fungal vulnerability was estimated based on high-throughput sequencing data at the soil sample level. The vulnerability of soil fungal groups was estimated relative to three global change drivers, viz. heat (maximum monthly temperature), drought (negative of inverse hyperbolic sine-transformed precipitation in the driest quarter) and land cover change, for the year 2070 (relative to a 2015 baseline) using the community-mean percentile vulnerability index (V_{2i} ; Smith, Jovan, et al., 2020). This index is based on averaging percentiles of all species at a given global change driver value.

$$V_{2i} = \left(\frac{\sum_{j=1}^n a_{ij} F_j (X_i)}{\sum_{j=1}^n a_{ij}} \right) \times 100$$

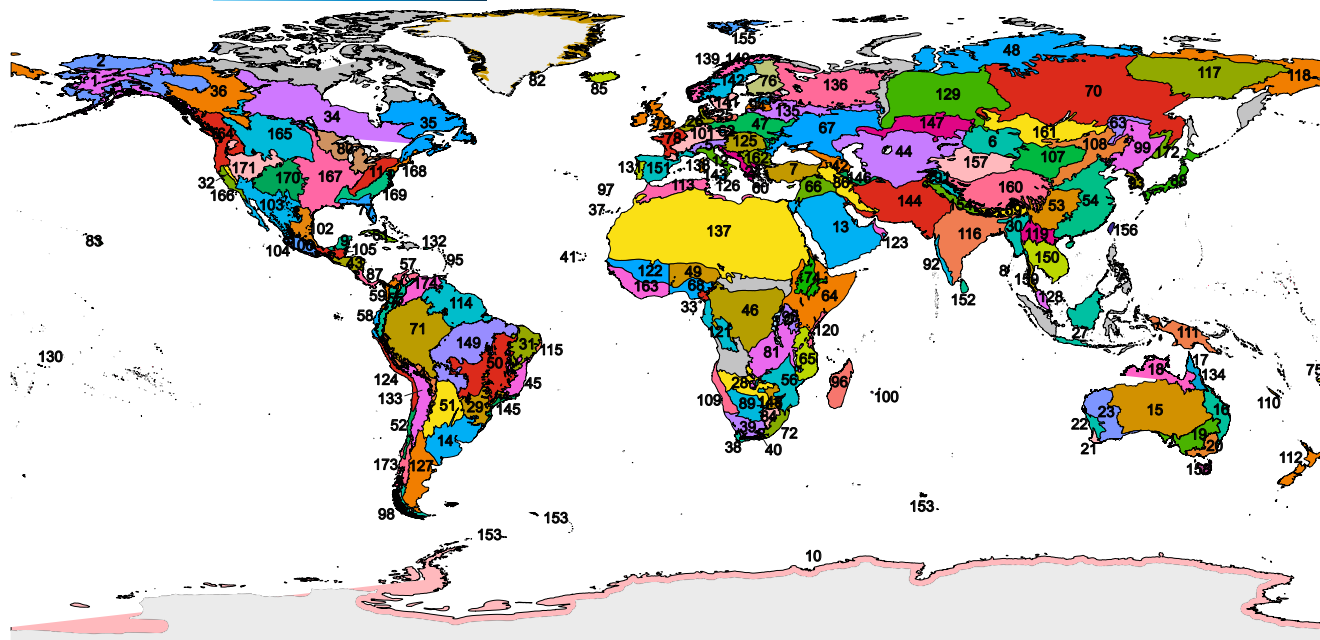


FIGURE 2 Distribution of 174 ecoregions used in endemicity analyses. Ecoregions excluded from the analyses due to the lack of data are indicated in grey. Their definition and relationship with Olson's ecological regions are given in Table S1.

where a_{ij} is the presence (0 or 1) of species j at site i , $F_j(x_i)$ the percentile of species j given site parameter value x_i , x_i the parameter value of site i and n the total number of species observed. Precipitation in the driest quarter was selected as a proxy for drought because bioclimatic variables cover larger areas (including islands) and offer greater resolution compared with other measures of soil water content and indicators of drought. The vulnerability scores were calculated for each soil sample using the *vuln* v.0.0.05 (Smith, Jovan, et al., 2020) package of R. We also constructed the average vulnerability score by equally weighing all components based on z-scores. The vulnerability scores were unrelated to sequencing depth and sample size.

We performed a similar random forest and GLM modelling exercise to determine the main predictors of vulnerability as described above but allowed two-way interaction terms between categorical and continuous predictors and used a more relaxed threshold for retaining variables in the model ($p < .001$; $R^2 > .01$) due to greater sample size. To predict vulnerability scores for each global driver and estimate their prediction uncertainty, thin plate splines (basis dimensionality = 3) were fitted using a generalized additive model with the *mgcv* v.1.8–38 (Wood, 2011) package of R. To incorporate the spatial autocorrelation signal, we calculated residuals at the sampling sites and used inverse distance weighting to interpolate residuals beyond the sampling sites. To obtain final vulnerability predictions, interpolated residuals were added to the results based on the predicted regression part (Hengl & MacMillan, 2019). By using the relative vulnerability values, we also prepared the map of fungal vulnerability ascribed to each of the three components. Vulnerability maps were visualized using the raster v.3.5–9 (Hijmans et al., 2021) package of R.

The maps for conservation priorities were calculated for all fungi using the same sampling points used for the vulnerability analyses,

except for points corresponding to cropland and urban and village land cover types. For each sampling point, the respective average endemicity, γ -diversity and vulnerability scores were z-transformed, followed by adding a constant (5, to exclude negative values), multiplied (to downweight areas with any low values), and used in a regression approach (Table S3) as described for vulnerability.

3 | RESULTS AND DISCUSSION

3.1 | General findings

We used the recently generated Global Soil Mycobiome consortium data set (GSMc; 3200 plots, Tedersoo, Mikryukov, et al., 2021) along with data from five other global soil surveys (Figure 1) and international nucleotide sequence databases to determine the diversity and endemicity of fungal functional groups—viz. AM fungi, ectomycorrhizal (EcM) fungi, non-EcM Agaricomycetes (mostly saprotrophic macrofungi), molds, pathogens, OHPs (mostly thermophilic saprotrophs), early-diverging unicellular lineages and yeasts. Compared with previous meta-analytical approaches (e.g., Větrovský et al., 2019), our cumulative data comprise the largest available globally standardized database based on directly comparable soil sampling and long-read molecular analysis protocols. Collectively, all data sets yielded 20,182,427 fungal reads composed of 905,841 “species”—operational taxonomic units (OTUs), each defined at <98% sequence similarity of the rRNA ITS barcode from all other OTUs. *Tomentella* (Basidiomycota), *Penicillium* (Ascomycota), and *Mortierella* (Mortierellomycota) were the most species-rich genera recorded (Figure 1).

3.2 | Fungal endemism

To estimate relative endemism among the world's ecoregions (Figure 2, Table S4), we combined indices of community similarity, uniqueness, and species ranges into an overall endemism index. We found that the endemism of all fungi peaked in tropical rainforest and tropical woodland biomes of Amazonia (including cerrado), Yucatan, West-Central Africa, Sri Lanka, and New Caledonia (Figure 3). Endemism was positively related to mean annual air temperature (MAT; $R^2_{\text{adj}} = .277$; Figure 3) and soil acidity ($R^2_{\text{adj}} = .108$; Table S4).

While endemism patterns of non-EcM Agaricomycetes and AM fungi were similar to those shown for all fungi, different patterns were found for other functional groups (Figure S1). Endemism of EcM fungi was related to high mean annual precipitation ($R^2_{\text{adj}} = .147$), with peaks in moist and dry tropical forests and temperate rainforests of Patagonia and New Zealand. Molds had relatively high endemism in Amazonia, whereas pathogens and yeasts showed multiple endemism hotspots. Molds ($R^2_{\text{adj}} = .199$) and pathogens ($R^2_{\text{adj}} = .105$) had relatively greater endemism in strongly acidic or alkaline soils, indicating that extreme soil conditions may support unique soil biota, with limited effective dispersal across edaphically extreme habitats (Figure S1). Human footprint (see Section 2) had a weak negative effect on endemism of all fungi ($R^2_{\text{adj}} = .018$), pathogens ($R^2_{\text{adj}} = .015$) and OHPs ($R^2_{\text{adj}} = .056$), suggesting that anthropogenic habitat loss or homogenization may affect endemic species (Finderup Nielsen et al., 2019). European ecoregions had the lowest endemism for all fungi ($R^2_{\text{adj}} = .065$), pathogens ($R^2_{\text{adj}} = .086$) and unicellular fungi ($R^2_{\text{adj}} = .035$) compared with those of other subcontinents. Averaged

current aerial bioclimatic variables better explained endemism compared with the ranges of those variables or bioclimatic variables of soil and LGM. Climate change since the LGM had a weak positive effect on endemism of molds (mean diurnal range and overall climate change: $R^2_{\text{adj}} = .073$) and OHPs (bioclimatic variables climate isothermality and mean diurnal range: $R^2_{\text{adj}} = .056$; Table S4).

We found that patterns in fungal endemism were relatively consistent among the five individual endemism indices (Figure S1) and that, in agreement with our first hypothesis, they resembled endemism patterns of vascular plants and animals, which exhibit major hotspots in wet tropical habitats (Barlow et al., 2018; Kier et al., 2009). However, in a striking contrast to plants and animals (Kier et al., 2009), fungal endemism showed no detectable relationship with insularity (Figure 4). This lack of insularity effect may reflect the greater long-distance dispersal capacity of fungal spores relative to plant propagules and animals (Golan & Pringle, 2017). The negligible effects of soil nutrients on fungal diversity (Tedersoo, Bahram, Pölme, et al., 2014; Tedersoo, Bahram, Ryberg, et al., 2014) and endemism (this study) suggest that nutrient availability may not limit fungal growth or promote speciation.

The literature abounds with hypotheses, including narrower niche breadth, more asymmetric biotic interactions (i.e., greater specialization to symbiotic partners), long-term climatic stability (LGM and earlier epochs), and more rapid evolution due to environmental energy (metabolic hypothesis; Brown, 2014; Vázquez & Stevens, 2004), to explain the greater macroorganism richness and endemism found in the tropics than elsewhere. The observed negligible effects of the LGM suggest that climatic stability is not an important driver of fungal endemism, a pattern which contrasts

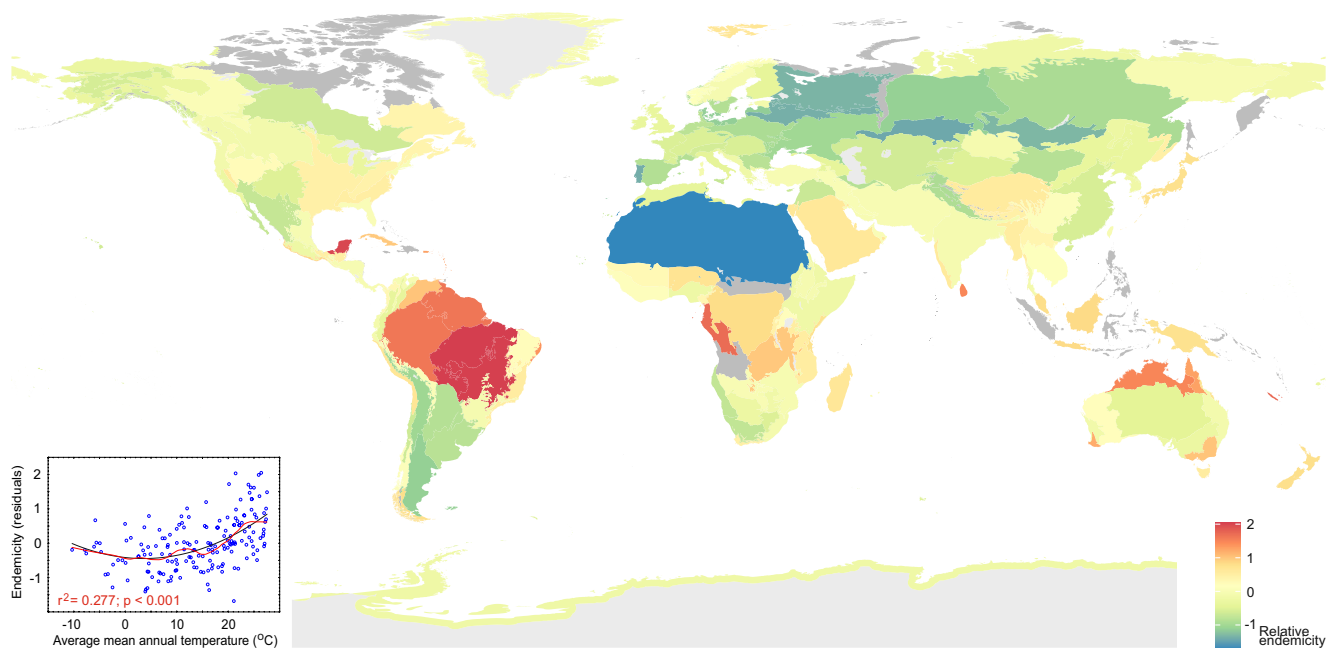


FIGURE 3 Average endemism of soil fungi across ecoregions (defined in Figure 2). The inset graph indicates that endemism has a positive and U-shaped relationship with mean annual air temperature, the best predictor of endemism. Grey ecoregions were excluded because of insufficient data.

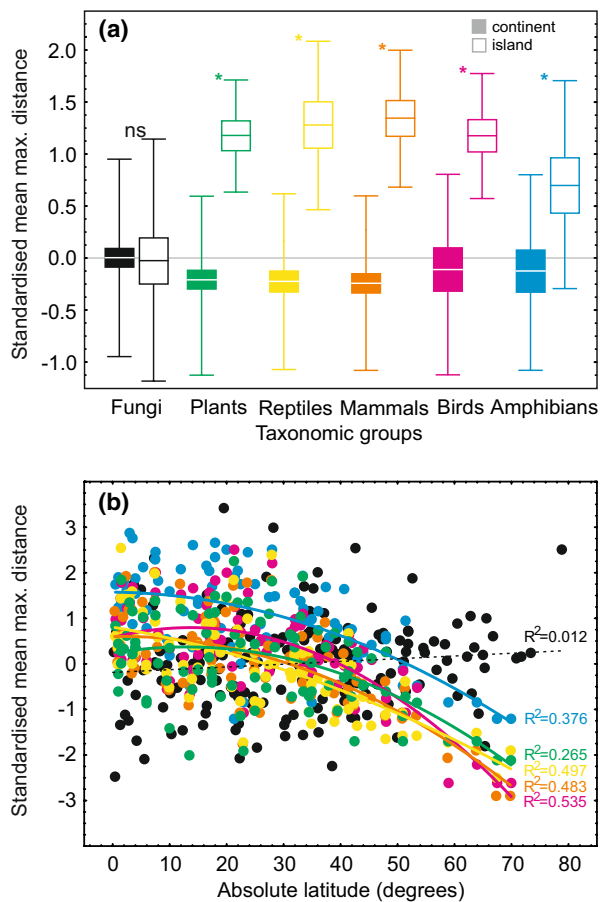


FIGURE 4 Endemicity patterns of fungi compared with plants and various vertebrate groups: (a) insularity effect and (b) latitudinal distribution. The analyses are based on world's ecoregions that differ for fungi compared with plants and animals (Kier et al., 2009). For all data sets, the mean maximum distance of all species was available and therefore taken as a measure of relative endemicity. For comparative purposes, these values were logarithm-transformed, corrected for sequencing and sampling depth (only fungi) and z-transformed. In (a) lines, boxes and error bars represent mean, SE and SD, respectively. In (b) the endemicity values were regressed against latitude using second-order polynomial function; colours represent different organism groups as indicated in (a). For fungi, $n = 156$ and $n = 28$ for continent and island ecoregions, respectively; for other groups, $n = 76$ and $n = 14$ for continent and island ecoregions, respectively.

with that of plants and animals (Rosauer & Jetz, 2015). The greater phylogenetic diversity and mean neighbour taxonomic distance of fungi noted for the tropics (Tedesoo et al., 2018) reflect tropical origins for many lineages, as well as extensive radiation and rapid speciation of certain genera in higher latitude areas (Kennedy et al., 2012; Sánchez-Ramírez et al., 2015; Tedesoo, Bahram, Ryberg, et al., 2014). On a global scale, plant diversity does not appear to be causally related to fungal diversity (Tedesoo, Bahram, Pölme, et al., 2014), but there is some evidence for stronger mutualistic plant-fungal interactions related to high rainfall (Pölme et al., 2018). Pathogenic interactions warrant further research in this respect, given their major importance as regulators of plant

diversity (Chen et al., 2019). Tropical soil fungi have relatively greater dispersal limitations (Bahram et al., 2013) and narrower distribution ranges (this study), suggesting that high local diversity may contribute to greater regional-scale endemicity.

3.3 | Vulnerability to global change drivers

We evaluated the relative vulnerability of soil fungal functional groups by estimating the percentage of species occurring at their upper niche limits to three major global change drivers—land use (land cover change), heat (maximum monthly temperature), and drought (lowest quarterly precipitation). For all fungi taken together, predicted vulnerability to heat (best predictor: maximum monthly temperature; $R^2_{adj} = .583$) and drought (precipitation seasonality; $R^2_{adj} = .456$) were greatest in the drylands of tropical and subtropical latitudes. Vulnerability to land use change (best predictor: climate isothermality; $R^2_{adj} = .145$) peaked in the tropics (Figure S2; Table S5). The overall additive global change vulnerability was, thus, the highest in densely populated and drier tropical and subtropical regions, especially in India and the sub-Saharan Sudanian savanna (Figure 5), and was positively associated with temperature-related variables (cumulative $R^2_{adj} = .382$). Fungal functional groups had similar vulnerability patterns, which were mostly related to temperature (Figures S2 and S3; Table S5). Among fungal groups, average vulnerability scores were highest for AM and EcM symbionts and unicellular fungi, but these scores differed only slightly across the global change drivers (Figure 5c). The actual vulnerability was probably underestimated for biotrophic pathogens and EcM fungi because these groups associate with a limited number of plant species and are sometimes host-specific (Kennedy et al., 2015). Therefore, the loss of one of only a few key symbiotic partners may greatly reduce the biotic niches of specialist fungi.

Patterns of vulnerability in fungi are somewhat similar to those of terrestrial plants and animals, and in agreement with our second hypothesis, vulnerability peaks in drylands prone to desertification (Warren et al., 2013), Arctic/alpine areas (cold-adapted species) and regions with dense human populations (Watson et al., 2013). The relatively low vulnerability to heat in tundra-inhabiting fungi can be explained by their relatively high-temperature optima (Maynard et al., 2019; but see Misiak et al., 2021), acclimation (Romero-Olivares et al., 2017) and poleward migration potentials, despite relatively greater predicted warming in Arctic ecosystems. Above certain tolerance thresholds, soil organisms may be physiologically constrained by increasing soil temperature and evaporation, lower soil water potentials and loss of oxygen due to greater respiration and faster decomposition, which result in hampered soil functioning and ecosystem multifunctionality (Delgado-Baquerizo et al., 2017). Open areas are predicted to increase due to climate change and human activities. This will further expose soil to solar radiation and result in erosion and the loss of plant hosts for fungi. Losses of soil carbon and nutrients, but also anthropogenic nitrogen deposition, may exacerbate fungal vulnerability. These drivers are expected to

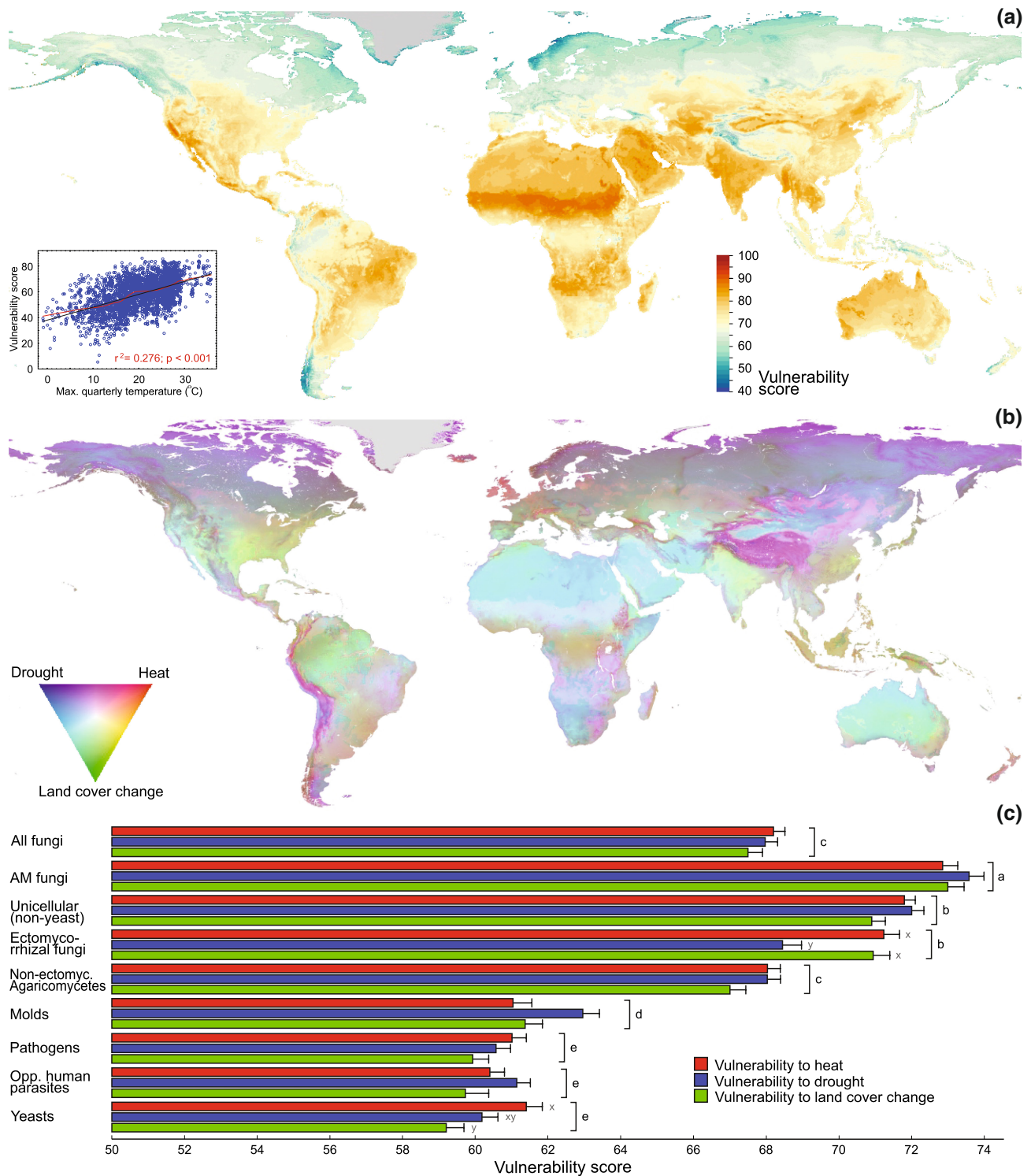


FIGURE 5 Vulnerability of fungi to global change drivers: (a) average vulnerability of all fungi to drought, heat and land cover change. The inset shows the near-linear relationship of vulnerability to the air temperature of the warmest quarter. (b) Relative importance of predicted vulnerability of all fungi to drought, heat and land cover change as indicated by colour mixes. For example, the purple colour indicates high vulnerability to both heat and drought but low vulnerability to land cover change. (c) Relative importance of global change drivers for the predicted vulnerability of soil fungi and functional groups. Different letters indicate statistically significant ($p < .001$) differences among functional groups (a–e) and among global change drivers within functional groups (x–z). Mapping error estimates for panel (a) are given in Figure S4.

be more influential locally (e.g., Correia et al., 2021; van der Linde et al., 2018) and are partly accounted for by land cover change in this study. Furthermore, while here we calculated average vulnerabilities

by summing the effects of individual drivers, global change impacts tend to be synergistic (Rillig et al., 2019), so actual vulnerabilities may be much higher.

3.4 | Implications for conservation

Most fungi and soil organisms do not enjoy the protection and conservation measures that are afforded to more charismatic animals and plants (Ducarme et al., 2013). Nonetheless, fungi and other soil biota are pivotal to soil and plant health, carbon and nutrient cycling, water storage, food security and many other ecosystem services. Their biodiversity should, hence, be brought to the focus of global sustainability thinking and conservation planning. For example, these organisms should be factored in when selecting protected areas, which are otherwise based on the distributions of plants or animals (Guerra, Bardgett, et al., 2021). The fact that many EcM and plant pathogenic fungal species are associated with specific host plants indicates that on the local scale it is not only the narrowly distributed species, but also those with unique or specific biotic associations, which require focused conservation measures. From the fungal perspective, it is particularly important to protect plant species that act as hubs in modules of biotic interaction networks,

because these hub species typically associate with multiple, distinct fungal partners (Pölme et al., 2018). In other cases, certain unique plant species or higher taxonomic groups should be prioritized. For example, in southern South America, the drought-sensitive tree family Nothofagaceae is the only group known to support EcM fungi that are mostly endemic to the region (Godoy & Marin, 2019).

Although the vulnerability scores to environmental change differed among fungal groups, their overall global patterns were similar. This suggests that broad habitat conservation measures may work for most fungal groups, including the macroscopic non-EcM Agaricomycetes and EcM fungi as well as more cryptic pathogens and other groups. To accomplish this, fungi need to be incorporated into conservation frameworks (Gonçalves et al., 2021). Actions to fill existing information gaps at the local and global levels must also be taken, and global-scale surveys should account for soil biodiversity assessments, complementing traditional collections-based assessment with metabarcoding of environmental DNA. For fungi—and many other soil

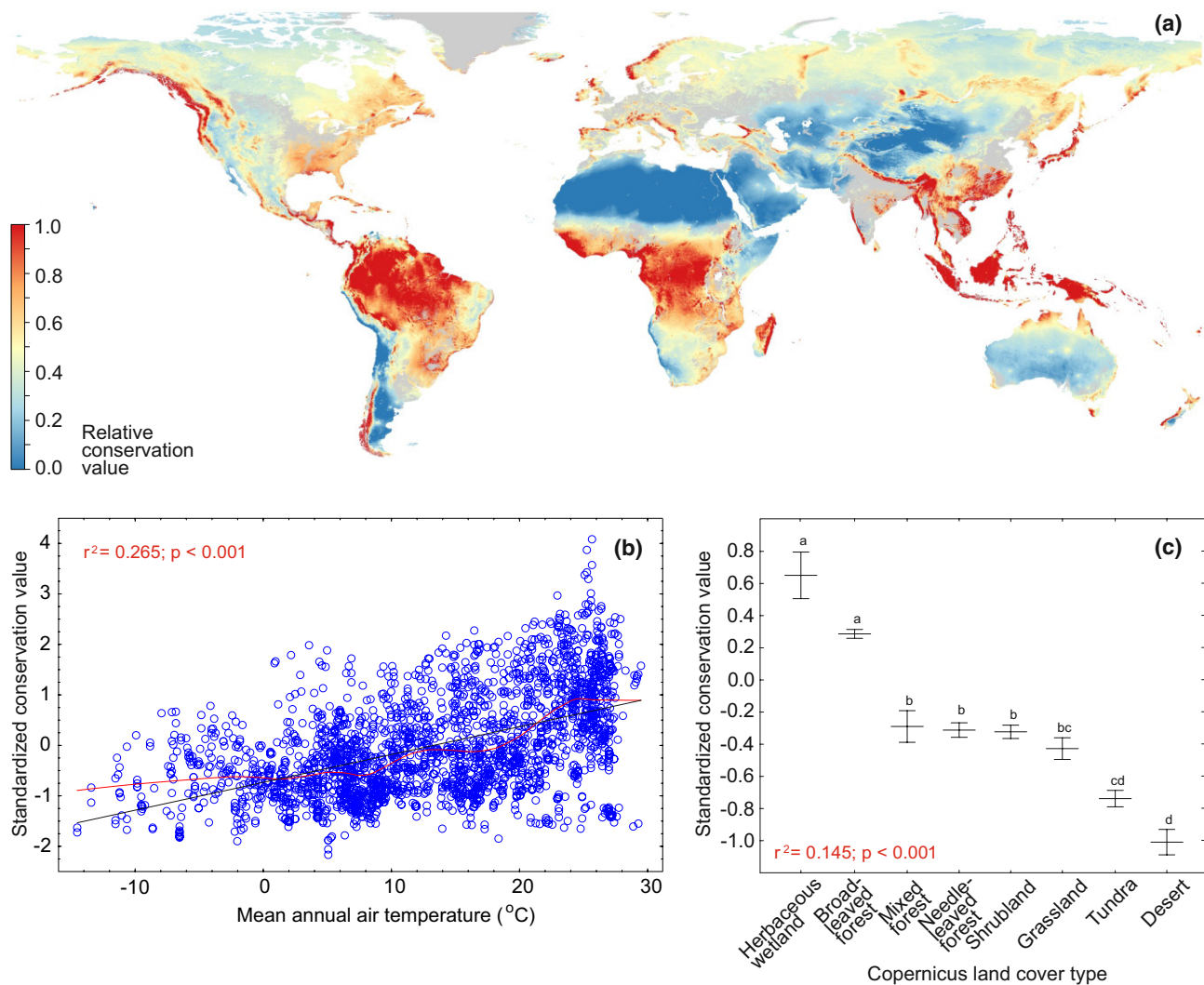


FIGURE 6 Conservation priority areas for all fungi (a) and their relationships with mean annual temperature (b) and Copernicus land cover types (c). In (b), black and red lines indicate best-fitting linear and lowess functions, respectively. In (c), central lines and whiskers indicate mean and standard errors, respectively; letters above whiskers indicate statistically significant differences among land cover types.

organisms—analyses of distribution and conservation requirements are now feasible based on large-scale molecular surveys that can be highly standardized and rapidly performed. Such studies can distinguish cryptic species and ameliorate the enormous data coverage biases in GBIF and other global databases. Data produced by such studies can then be used in national conservation programs and global policy-making initiatives, such as the System of Environmental Economic Accounting of the United Nations, World Biodiversity Forum and Post-2020 Global Biodiversity Framework. Furthermore, promoting the red-listing of endangered fungal species at the national and global levels is critical (FAO, 2020; IUCN, 2021). Fungi need active and specific inclusion in national and global conservation policies and strategies, not just passive and implicit protection.

Our study provides evidence that soil fungi may be highly vulnerable to global change, which needs to be considered when planning how to preserve these ecologically pivotal organisms in a changing world. As with plants and animals, fungi appear to be sensitive to the strong impacts of land cover change, low moisture and high temperatures on the taxonomic and functional composition of communities (Brinkmann et al., 2019; Makiola et al., 2019; this study). The endemism of fungi is highest in tropical forest biomes, so conservation measures advocated for tropical plants and animals (Barlow et al., 2018; Brooks et al., 2006) are likely to conserve fungi. Tropical forests are under continued threat from deforestation and degradation driven by expanding agriculture, extractive industries and infrastructural projects (Bebbington et al., 2018). Conservation of herbaceous wetlands, tropical rainforests and tropical woodlands is supported by our global fungal conservation priority map that accounts for endemism, vulnerability and γ -diversity (Figure 6). Additionally, given the importance of soil pH for soil microbial diversity and composition (Aslani et al., 2022; Bahram et al., 2018; Delgado-Baquerizo, Oliverio, et al., 2018; Tedersoo, Bahram, Pölme, et al., 2014; Tedersoo, Bahram, Ryberg, et al., 2014; Tedersoo et al., 2022), it is essential to prioritize areas with high pedodiversity or mixed landscapes including bogs, various forest types and grasslands. As a crucial measure, desertification and loss of soil organic matter need to be controlled by reducing the conversion of primary forest to crops and pasture (Smith, Calvin, et al., 2020). This is important, not only to prevent land degradation processes from impairing the diversity of fungi and other soil biota (Bach et al., 2020; Guerra, Bardgett, et al., 2021), but also to sustain the capacity of drylands to provide essential ecological functions and ecosystem services, such as soil fertility, carbon storage and food production for more than one billion people (Delgado-Baquerizo, Eldridge, et al., 2018; Sivakumar, 2007).

4 | CONCLUSIONS

Soil fungi show strong endemism patterns, which differ between functional groups and are driven by both climatic and edaphic

factors. Fungal groups also differ strongly in their relative vulnerability scores to global change, which peak in heavily populated dryland areas. Unfortunately, these are the very areas most prone to further land degradation and desertification, with the potential loss of many species. Fungal endemism and vulnerability patterns only partly mirror those of vascular plants and animals, with virtually no insularity effects detected among fungi—a pattern that may be ascribed to their more efficient dispersal mechanisms. Global conservation efforts should include fungal biodiversity surveys alongside assessments of soil health, below- and aboveground feedbacks and areas of highest conservation priority, to secure the protection of key-stone host species and natural habitats. Furthermore, they should include the monitoring of regional fungal communities over time, to detect relevant changes and provide early warning signals of impending change. The analysis for soil fungi presented here strongly suggests that microorganisms, and soil organisms in general, also deserve detailed assessments of their geographic distributions and conservation needs.

AUTHOR CONTRIBUTIONS

Leho Tedersoo, Vladimir Mikryukov, Alexander Zizka, Mohammad Bahram, Nadejda A. Soudzilovskaia, Alexandre Antonelli, Urmas Kõljalg, and Kessy Abarenkov designed the study; Vladimir Mikryukov, Leho Tedersoo, Alexander Zizka, Marijn Batters, Niloufar Hagh-Doust, Sten Anslan and Oleh Prylutskyi analysed data; Leho Tedersoo, Manuel Delgado-Baquerizo, Fernando T. Maestre, Jaan Pärn, Maarja Öpik, Mari Moora, Martin Zobel, Mikk Espenberg, and Ülo Mander contributed DNA extracts from global surveys; other authors contributed materials, data and/or chemical analyses; Leho Tedersoo wrote the first draft, and all authors contributed to the writing of the article.

ACKNOWLEDGMENTS

The full acknowledgements are provided in Table S6. The bulk of the funding is derived from the Estonian Science Foundation (grants PRG632, PRG1170, PRG1615, MOBTP198), EEA Financial Mechanism Baltic Research Programme (EMP442), and Novo Nordisk Fonden (NNF20OC0059948). All collected soil samples are preserved in collection of DNA and environmental samples of University of Tartu Natural History Museum.

CONFLICT OF INTEREST

The authors declare no competing interests.

DATA AVAILABILITY STATEMENT

The data supporting the results is archived in Zenodo (<https://doi.org/10.5281/zenodo.6983158> and <https://doi.org/10.5281/zenodo.7027315>) and PlutoF (<https://doi.org/10.15156/BIO/2263453>). The scripts for analyses are available via GitHub (https://github.com/Mycology-Microbiology-Center/Fungal_Endemism_and_Vulnerability).

ORCID

Leho Tedersoo  <https://orcid.org/0000-0002-1635-1249>

REFERENCES

- Aslani, F., Geisen, S., Ning, D., Tedersoo, L., & Bahram, M. (2022). Towards revealing the global diversity and community assembly of soil eukaryotes. *Ecology Letters*, *25*, 65–76.
- Bach, E. M., Ramirez, K. S., Fraser, T. D., & Wall, D. H. (2020). Soil biodiversity integrates solutions for a sustainable future. *Sustainability*, *12*, 2662.
- Bahram, M., Hildebrand, F., Forslund, S. K., Anderson, J. L., Soudzilovskaia, N. A., Bodegom, P. M., & Bork, P. (2018). Structure and function of the global topsoil microbiome. *Nature*, *560*, 233–237.
- Bahram, M., Koljalg, U., Courty, P. E., Diedhiou, A. G., Kjoller, R., Polme, S., Ryberg, M., Veldre, V., & Tedersoo, L. (2013). The distance decay of similarity in communities of ectomycorrhizal fungi in different ecosystems and scales. *Journal of Ecology*, *101*, 1335–1344.
- Bahram, M., Espenberg, M., Pärn, J., Lehtovirta-Morley, L., Anslan, S., Kasak, K., & Mander, Ü. (2022). Structure and function of the soil microbiome underlying N₂O emissions from global wetlands. *Nature Communications*, *13*, 1430.
- Barcenas-Moreno, G. E., Gomez-Brandon, M. A., Rousk, J., & Bååth, E. (2009). Adaptation of soil microbial communities to temperature: Comparison of fungi and bacteria in a laboratory experiment. *Global Change Biology*, *15*, 2950–2957.
- Barlow, J., França, F., Gardner, T. A., Hicks, C. C., Lennox, G. D., Berenguer, E., & Graham, N. A. (2018). The future of hyperdiverse tropical ecosystems. *Nature*, *559*, 517–526.
- Baselga, A., & Orme, C. D. L. (2012). Betapart: An R package for the study of beta diversity. *Methods in Ecology and Evolution*, *3*, 808–812.
- Bastida, F., Eldridge, D. J., García, C., Kenny Png, G., Bardgett, R. D., & Delgado-Baquerizo, M. (2021). Soil microbial diversity–biomass relationships are driven by soil carbon content across global biomes. *The ISME Journal*, *15*, 2081–2091.
- Bebbington, A. J., Humphreys Bebbington, D., Sauls, L. A., Rogan, J., Agrawal, S., Gamboa, C., & Verdum, R. (2018). Resource extraction and infrastructure threaten forest cover and community rights. *Proceedings of the National Academy of Sciences of the USA*, *115*, 13164–13173.
- Brinkmann, N., Schneider, D., Sahrner, J., Ballauff, J., Edy, N., Barus, H., & Polle, A. (2019). Intensive tropical land use massively shifts soil fungal communities. *Scientific Reports*, *9*, 3403.
- Brook, B. W., Sodhi, N. S., & Bradshaw, C. J. (2008). Synergies among extinction drivers under global change. *Trends in Ecology & Evolution*, *23*, 453–460.
- Brooks, T. M., Mittermeier, R. A., Da Fonseca, G. A., Gerlach, J., Hoffmann, M., Lamoreux, J. F., & Rodrigues, A. S. (2006). Global biodiversity conservation priorities. *Science*, *313*, 58–61.
- Brown, J. H. (2014). Why are there so many species in the tropics? *Journal of Biogeography*, *41*, 8–22.
- Buchhorn, M., Lesiv, M., Tsendbazar, N. E., Herold, M., Bertels, L., & Smets, B. (2020). Copernicus global land cover layers—Collection 2. *Remote Sensing*, *12*, 1044.
- Cameron, E. K., Martins, I. S., Lavelle, P., Mathieu, J., Tedersoo, L., Bahram, M., & Eisenhauer, N. (2019). Global mismatches in aboveground and belowground biodiversity. *Conservation Biology*, *33*, 1187–1192.
- Cao, Y., Wu, G., & Yu, D. (2021). Include macrofungi in biodiversity targets. *Science*, *372*, 1160.
- Chen, L., Swenson, N. G., Ji, N., Mi, X., Ren, H., Guo, L., & Ma, K. (2019). Differential soil fungus accumulation and density dependence of trees in a subtropical forest. *Science*, *366*, 124–128.
- Correia, M., Espelta, J. M., Morillo, J. A., Pino, J., & Rodríguez-Echeverría, S. (2021). Land-use history alters the diversity, community composition and interaction networks of ectomycorrhizal fungi in beech forests. *Journal of Ecology*, *109*, 2856–2870.
- Crisp, M. D., Laffan, S., Linder, H. P., & Monro, A. (2001). Endemism in the Australian flora. *Journal of Biogeography*, *28*, 183–198.
- Crowther, T. W., Van den Hoogen, J., Wan, J., Mayes, M. A., Keiser, A. D., Mo, L., Averill, C., & Maynard, D. S. (2019). The global soil community and its influence on biogeochemistry. *Science*, *365*, eaav0550.
- Davison, J., Moora, M., Semchenko, M., Adenan, S. B., Ahmed, T., Akhmetzhanova, A. A., & Öpik, M. (2021). Temperature and pH define the realised niche space of arbuscular mycorrhizal fungi. *New Phytologist*, *231*, 763–776.
- Davison, J., Moora, M., Öpik, M., Adholeya, A., Ainsaar, L., Bâ, A., & Zobel, M. (2015). Global assessment of arbuscular mycorrhizal fungus diversity reveals very low endemism. *Science*, *349*, 970–973.
- de Vries, F. T., Griffiths, R. I., Bailey, M., Craig, H., Girlanda, M., Gweon, H. S., & Bardgett, R. D. (2018). Soil bacterial networks are less stable under drought than fungal networks. *Nature Communications*, *9*, 3033.
- Delgado-Baquerizo, M., Eldridge, D. J., Liu, Y. R., Sokoya, B., Wang, J. T., Hu, H. W., He, J. Z., Bastida, F., Moreno, J. L., Bamigboye, A. R., & Blanco-Pastor, J. L. (2021). Global homogenization of the structure and function in the soil microbiome of urban greenspaces. *Science Advances*, *7*, eabg5809.
- Delgado-Baquerizo, M., Eldridge, D. J., Ochoa, V., Gozalo, B., Singh, B. K., & Maestre, F. T. (2017). Soil microbial communities drive the resistance of ecosystem multifunctionality to global change in drylands across the globe. *Ecology Letters*, *20*, 1295–1305.
- Delgado-Baquerizo, M., Eldridge, D. J., Travers, S. K., Val, J., Oliver, I., & Bissett, A. (2018). Effects of climate legacies on above- and belowground community assembly. *Global Change Biology*, *24*, 4330–4339.
- Delgado-Baquerizo, M., Oliverio, A. M., Brewer, T. E., Benavent-González, A., Eldridge, D. J., Bardgett, R. D., & Fierer, N. (2018). A global atlas of the dominant bacteria found in soil. *Science*, *359*, 320–325.
- Ducarme, F., Luque, G. M., & Courchamp, F. (2013). What are “charismatic species” for conservation biologists. *BioSciences Master Reviews*, *10*, 1–8.
- Egidi, E., Delgado-Baquerizo, M., Plett, J. M., Wang, J., Eldridge, D. J., Bardgett, R. D., & Singh, B. K. (2019). A few Ascomycota taxa dominate soil fungal communities worldwide. *Nature Communications*, *10*, 2369.
- FAO, ITPS, GSBI, SCBD, EC. (2020). *State of knowledge of soil biodiversity – Status, challenges and potentialities*. FAO. <https://doi.org/10.4060/cb1928en>.
- Filipponi, F., Valentini, E., Nguyen Xuan, A., Guerra, C. A., Wolf, F., Andrzejak, M., & Taramelli, A. (2018). Global MODIS fraction of green vegetation cover for monitoring abrupt and gradual vegetation changes. *Remote Sensing*, *10*, 653.
- Finderup Nielsen, T., Sand-Jensen, K., Dornelas, M., & Bruun, H. H. (2019). More is less: Net gain in species richness, but biotic homogenization over 140 years. *Ecology Letters*, *22*, 1650–1657.
- Foden, W. B., Young, B. E., Akçakaya, H. R., Garcia, R. A., Hoffmann, A. A., Stein, B. A., & Huntley, B. (2019). Climate change vulnerability assessment of species. *Wiley Interdisciplinary Reviews: Climate Change*, *10*, e551.
- Godoy, R., & Marin, C. (2019). Mycorrhizal studies in temperate rainforests of southern Chile. In M. C. Pagano & M. A. Lugo (Eds.), *Mycorrhizal fungi in South America* (pp. 315–341). Springer.
- Golan, J. J., & Pringle, A. (2017). Long-distance dispersal of fungi. *Microbiology Spectrum*, *5*, 1–24.
- Gonçalves, S. C., Haelewaters, D., Furci, G., & Mueller, G. M. (2021). Include all fungi in biodiversity goals. *Science*, *373*, 403.
- Guerra, C. A., Bardgett, R. D., Caon, L., Crowther, T. W., Delgado-Baquerizo, M., Montanarella, L., & Eisenhauer, N. (2021). Tracking, targeting, and conserving soil biodiversity. *Science*, *371*, 239–241.
- Guerra, C. A., Delgado-Baquerizo, M., Duarte, E., Marigliano, O., Gørgen, C., Maestre, F. T., & Eisenhauer, N. (2021). Global projections of

- the soil microbiome in the Anthropocene. *Global Ecology and Biogeography*, 30, 987–999.
- Hawksworth, D. L., & Lücking, R. (2017). Fungal diversity revisited: 2.2 to 3.8 million species. *Microbiology Spectrum*, 5, 79–95.
- Hengl, T., & MacMillan, R. A. (2019). *Predictive soil mapping with R*. www.soilmapper.org (OpenGeoHub foundation, 2019).
- Hijmans, R. J., Van Etten, J., Mattiuzzi, M., Cheng, J., Sumner, M., & Greenberg, J. A. (2021). Raster: Geographic data analysis and modeling. R package version 3.5–9. <https://CRAN.R-project.org/package=raster>
- Hurttt, G. C., Chini, L., Sahajpal, R., Frolking, S., Bodirsky, B. L., Calvin, K., & Zhang, X. (2020). Harmonization of global land use change and management for the period 850–2100 (LUH2) for CMIP6. *Geoscientific Model Development*, 13, 5425–5464.
- IUCN. (2021). *IUCN red list of threatened species*. version 2021–2. IUCN, Gland. <https://www.iucnredlist.org/>
- Karger, D. N., Conrad, O., Böhrner, J., Kawohl, T., Kreft, H., Soria-Auza, R. W., Zimmermann, N. E., Linder, H. P., & Kessler, M. (2017). Climatologies at high resolution for the earth's land surface areas. *Scientific Data*, 4, 170122.
- Karger, D. N., Nobis, M. P., Normand, S., Graham, C. H., & Zimmermann, N. E. (2021). CHELSA-TraCE21k v1. 0. Downscaled transient temperature and precipitation data since the last glacial maximum. *Climate Past Discussions*, 2021, 30.
- Karger, D. N., Schmatz, D. R., Dettling, G., & Zimmermann, N. E. (2020). High-resolution monthly precipitation and temperature time series from 2006 to 2100. *Scientific Data*, 7, 248.
- Kennedy, P. G., Matheny, P. B., Ryberg, K. M., Henkel, T. W., Uehling, J. K., & Smith, M. E. (2012). Scaling up: Examining the macroecology of ectomycorrhizal fungi. *Molecular Ecology*, 21, 4151–4154.
- Kennedy, P. G., Walker, J. K. M., & Bogar, L. M. (2015). Interspecific mycorrhizal networks and non-networking hosts: Exploring the ecology of host genus *Alnus*. *Ecological Studies*, 224, 227–254.
- Kier, G., Kreft, H., Lee, T. M., Jetz, W., Ibsch, P. L., Nowicki, C., & Barthlott, W. (2009). A global assessment of endemism and species richness across Island and mainland regions. *Proceedings of the National Academy of Sciences of the USA*, 106, 9322–9327.
- Le Provost, G., Thiele, J., Westphal, C., Penone, C., Allan, E., Neyret, M., Van Der Plas, F., Ayasse, M., Bardgett, R. D., Birkhofer, K., & Boch, S. (2021). Contrasting responses of above- and belowground diversity to multiple components of land-use intensity. *Nature Communications*, 12, 3918.
- Makiola, A., Dickie, I. A., Holdaway, R. J., Wood, J. R., Orwin, K. H., & Glare, T. R. (2019). Land use is a determinant of plant pathogen alpha-but not beta-diversity. *Molecular Ecology*, 28, 3786–3798.
- Maestre, F. T., Eldridge, D. J., Gross, N., Le Bagousse-Pinguet, Y., Saiz, H., Gzozalo, B., Ochoa, V., & Gaitán, J. J. (2022). The BIODESERT survey: Assessing the impacts of grazing on the structure and functioning of global drylands. *Web Ecology*. In press. <https://doi.org/10.5194/we-21-1-2021>
- Malcolm, G. M., Lopez-Gutierrez, J. C., Koide, R. T., & Eissenstat, D. M. (2008). Acclimation to temperature and temperature sensitivity of metabolism by ectomycorrhizal fungi. *Global Change Biology*, 14, 1169–1180.
- Maynard, D. S., Bradford, M. A., Covey, K. R., Lindner, D., Glaeser, J., Talbert, D. A., & Crowther, T. W. (2019). Consistent trade-offs in fungal trait expression across broad spatial scales. *Nature Microbiology*, 4, 846–853.
- Misiak, M., Goodall-Copestake, W. P., Sparks, T. H., Worland, M. R., Boddy, L., Magan, N., & Newsham, K. K. (2021). Inhibitory effects of climate change on the growth and extracellular enzyme activities of a widespread Antarctic soil fungus. *Global Change Biology*, 27, 1111–1125.
- Nilsson, R. H., Larsson, K. H., Taylor, A. F. S., Bengtsson-Palme, J., Jeppesen, T. S., Schigel, D., & Abarenkov, K. (2019). The UNITE database for molecular identification of fungi: Handling dark taxa and parallel taxonomic classifications. *Nucleic Acids Research*, 47(D1), D259–D264.
- Olson, D. M., Dinerstein, E., Wikramanayake, E. D., Burgess, N. D., Powell, G. V. N., Underwood, E. C., & Kassem, K. R. (2001). Terrestrial ecoregions of the world: A new map of life on earth. *Bioscience*, 51, 933–938.
- Pacifici, M., Foden, W. B., Visconti, P., Watson, J. E., Butchart, S. H., Kovacs, K. M., & Rondinini, C. (2015). Assessing species vulnerability to climate change. *Nature Climate Change*, 5, 215–224.
- Pebesma, E. (2018). Simple features for R: Standardized support for spatial vector data. *R Journal*, 10, 439–446.
- Poggio, L., De Sousa, L. M., Batjes, N. H., Heuvelink, G., Kempen, B., Ribeiro, E., & Rossiter, D. (2021). SoilGrids 2.0: Producing soil information for the globe with quantified spatial uncertainty. *The Soil*, 7, 217–240.
- Pölmé, S., Abarenkov, K., Henrik Nilsson, R., Lindahl, B. D., Clemmensen, K. E., Kausserud, H., & Tedersoo, L. (2020). FungalTraits: A user-friendly traits database of fungi and fungus-like stramenopiles. *Fungal Diversity*, 105, 1–16.
- Pölmé, S., Bahram, M., Jacquemyn, H., Kennedy, P., Kohout, P., Moora, M., & Tedersoo, L. (2018). Host preference and network properties in biotrophic plant–fungus associations. *New Phytologist*, 217, 1230–1239.
- Pölmé, S., Bahram, M., Yamanaka, T., Nara, K., Dai, Y. C., Grebenc, T., & Tedersoo, L. (2013). Biogeography of ectomycorrhizal fungi associated with alders (*Alnus* spp.) in relation to biotic and abiotic variables at the global scale. *New Phytologist*, 198, 1239–1249.
- R Core Team. (2021). *R: A language and environment for statistical computing*. R Foundation for Statistical Computing, Vienna. <https://www.R-project.org/>
- Rillig, M. C., Ryo, M., Lehmann, A., Aguilar-Trigueros, C. A., Buchert, S., Wulf, A., & Yang, G. (2019). The role of multiple global change factors in driving soil functions and microbial biodiversity. *Science*, 366, 886–890.
- Rodriguez-Ramos, J. C., Cale, J. A., Cahill, J. F., Jr., Simard, S. W., Karst, J., & Erbilgin, N. (2021). Changes in soil fungal community composition depend on functional group and forest disturbance type. *New Phytologist*, 229, 1105–1117.
- Romero-Olivares, A. L., Allison, S. D., & Treseder, K. K. (2017). Soil microbes and their response to experimental warming over time: A meta-analysis of field studies. *Soil Biology and Biochemistry*, 107, 32–40.
- Rosauer, D. F., & Jetz, W. (2015). Phylogenetic endemism in terrestrial mammals. *Global Ecology and Biogeography*, 24, 168–179.
- Sánchez-Ramírez, S., Etienne, R. S., & Moncalvo, J. M. (2015). High speciation rate at temperate latitudes explains unusual diversity gradients in a clade of ectomycorrhizal fungi. *Evolution*, 69, 2196–2209.
- Sandel, B., Weigelt, P., Kreft, H., Keppel, G., van der Sande, M. T., Levin, S., & Knight, T. M. (2020). Current climate, isolation and history drive global patterns of tree phylogenetic endemism. *Global Ecology and Biogeography*, 29, 4–15.
- Schmidt, P. A., Schmitt, I., Otte, J., Bandow, C., Römbke, J., Bálint, M., & Rolshausen, G. (2018). Season-long experimental drought alters fungal community composition but not diversity in a grassland soil. *Microbial Ecology*, 75, 468–478.
- Schulte to Bühne, H., Tobias, J. A., Durant, S. M., & Petteorelli, N. (2021). Improving predictions of climate change–land use change interactions. *Trends in Ecology & Evolution*, 36, 29–38.
- Sivakumar, M. V. K. (2007). Interactions between climate and desertification. *Agricultural and Forest Meteorology*, 142, 143–155.
- Smith, P., Calvin, K., Nkem, J., Campbell, D., Cherubini, F., Grassi, G., Korotkov, V., Le Hoang, A., Lwasa, S., McElwee, P., & Nkonya, E. (2020). Which practices co-deliver food security, climate change mitigation and adaptation, and combat land degradation and desertification? *Global Change Biology*, 26, 1532–1575.

- Smith, R. J., Jovan, S., & McCune, B. (2020). Climatic niche limits and community-level vulnerability of obligate symbioses. *Journal of Biogeography*, *47*, 382–395.
- Stein, A., Gerstner, K., & Krefl, H. (2014). Environmental heterogeneity as a universal driver of species richness across taxa, biomes and spatial scales. *Ecology Letters*, *17*, 866–880.
- Talbot, J. M., Bruns, T. D., Taylor, J. W., Smith, D. P., Branco, S., Glassman, S. I., & Peay, K. G. (2014). Endemism and functional convergence across the north American soil mycobiome. *Proceedings of the National Academy of Sciences of the USA*, *111*, 6341–6346.
- Tedersoo, L., Albertsen, M., Anslan, S., & Callahan, B. (2021). Perspectives and benefits of high-throughput long-read sequencing in microbial ecology. *Applied and Environmental Microbiology*, *87*, e00626-21.
- Tedersoo, L., Bahram, M., Põlme, S., Kõljalg, U., Yorou, N. S., Wijesundera, R., & Abarenkov, K. (2014). Global diversity and geography of soil fungi. *Science*, *346*, 1256688.
- Tedersoo, L., Bahram, M., Ryberg, M., Otsing, E., Kõljalg, U., & Abarenkov, K. (2014). Global biogeography of the ectomycorrhizal/sebacina lineage (fungi, Sebaciales) as revealed from comparative phylogenetic analyses. *Molecular Ecology*, *23*, 4168–4183.
- Tedersoo, L., Mikryukov, V., Anslan, S., Bahram, M., Khalid, A. N., Corrales, A., & Abarenkov, K. (2021). The global soil mycobiome consortium dataset for boosting fungal diversity research. *Fungal Diversity*, *111*, 573–588.
- Tedersoo, L., Mikryukov, V., Zizka, A., Bahram, M., Hagh-Doust, N., Anslan, S., & Abarenkov, K. (2022). Towards understanding diversity, endemism and global change vulnerability of soil fungi. *bioRxiv*, 2022, 484796.
- Tedersoo, L., Sánchez-Ramírez, S., Kõljalg, U., Bahram, M., Döring, M., Schigel, D., & Abarenkov, K. (2018). High-level classification of the fungi and a tool for evolutionary ecological analyses. *Fungal Diversity*, *90*, 135–159.
- van der Linde, S., Suz, L. M., Orme, C. D. L., Cox, F., Andreae, H., Asi, E., & Bidartondo, M. I. (2018). Environment and host as large-scale controls of ectomycorrhizal fungi. *Nature*, *558*, 243–248.
- Vázquez, D. P., & Stevens, R. D. (2004). The latitudinal gradient in niche breadth: Concepts and evidence. *The American Naturalist*, *164*, E1–E19.
- Větrovský, T., Kohout, P., Kopecký, M., Machac, A., Man, M., Bahnmann, B. D., & Baldrian, P. (2019). A meta-analysis of global fungal distribution reveals climate-driven patterns. *Nature Communications*, *10*, 1–9.
- Villéger, S., & Brosse, S. (2012). Measuring changes in taxonomic dissimilarity following species introductions and extirpations. *Ecological Indicators*, *18*, 552–558.
- Wardle, D. A., & Lindahl, B. D. (2014). Disentangling global soil fungal diversity. *Science*, *346*, 1052–1053.
- Warren, R., VanDerWal, J., Price, J., Welbergen, J. A., Atkinson, I., Ramirez-Villegas, J., & Lowe, J. (2013). Quantifying the benefit of early climate change mitigation in avoiding biodiversity loss. *Nature Climate Change*, *3*, 678–682.
- Watson, J. E., Iwamura, T., & Butt, N. (2013). Mapping vulnerability and conservation adaptation strategies under climate change. *Nature Climate Change*, *3*, 989–994.
- Wood, S. N. (2011). Fast stable restricted maximum likelihood and marginal likelihood estimation of semiparametric generalized linear models. *Journal of the Royal Statistical Society: Series B (Statistical Methodology)*, *73*, 3–36.

SUPPORTING INFORMATION

Additional supporting information can be found online in the Supporting Information section at the end of this article.

How to cite this article: Tedersoo, L., Mikryukov, V., Zizka, A., Bahram, M., Hagh-Doust, N., Anslan, S., Prylutskyi, O., Delgado-Baquerizo, M., Maestre, F. T., Pärn, J., Öpik, M., Moora, M., Zobel, M., Espenberg, M., Mander, Ü., Khalid, A. N., Corrales, A., Agan, A., Vasco-Palacios, A.-M. ... Abarenkov, K. (2022). Global patterns in endemism and vulnerability of soil fungi. *Global Change Biology*, *28*, 6696–6710. <https://doi.org/10.1111/gcb.16398>