

## Research



**Cite this article:** Heinen R *et al.* 2023

Part-night exposure to artificial light at night has more detrimental effects on aphid colonies than fully lit nights. *Phil. Trans. R. Soc. B* **378**: 20220357.

<https://doi.org/10.1098/rstb.2022.0357>

Received: 21 October 2022

Accepted: 23 February 2023

One contribution of 17 to a theme issue 'Light pollution in complex ecological systems'.

### Subject Areas:

plant science, ecology, environmental science, ecosystems

### Keywords:

light pollution, ALAN, plant defence, induced defences, gene expression, urban ecology

### Author for correspondence:

Robin Heinen

e-mail: [robin.heinen@tum.de](mailto:robin.heinen@tum.de)

Electronic supplementary material is available online at <https://doi.org/10.6084/m9.figshare.c.6837639>.

# Part-night exposure to artificial light at night has more detrimental effects on aphid colonies than fully lit nights

Robin Heinen<sup>1</sup>, Oriana Sanchez-Mahecha<sup>1</sup>, T. Martijn Bezemer<sup>4</sup>, Davide M. Dominoni<sup>5</sup>, Claudia Knappe<sup>8</sup>, Johannes Kollmann<sup>2</sup>, Anton Kopatsch<sup>7</sup>, Zoë A. Pfeiffer<sup>1</sup>, Michael Schlöter<sup>6,3</sup>, Sarah Sturm<sup>1</sup>, Jörg-Peter Schnitzler<sup>7</sup>, A. Corina Vlot<sup>8,9</sup> and Wolfgang W. Weisser<sup>1</sup>

<sup>1</sup>Terrestrial Ecology Research Group, Department for Life Science Systems, Technical University of Munich School of Life Sciences, 85354 Freising, Germany

<sup>2</sup>Chair of Restoration Ecology, Department for Life Science Systems, Technical University of Munich, 8534 Freising, Germany

<sup>3</sup>Chair of Soil Science, Department for Life Science Systems, Technical University of Munich, 85354 Freising, Germany

<sup>4</sup>Institute of Biology, Section Plant Ecology and Phytochemistry, Leiden University, 2333 BE Leiden, The Netherlands

<sup>5</sup>School of Biodiversity, One Health & Veterinary Medicine, University of Glasgow, Glasgow G61 1QH, Scotland

<sup>6</sup>Research Unit Comparative Microbiome Analysis, Helmholtz, Munich, D-85764, Neuherberg, Germany

<sup>7</sup>Research Unit Environmental Simulation, Helmholtz, Munich, D-85764, Neuherberg, Germany

<sup>8</sup>Institute of Biochemical Plant Pathology, Institute of Biochemical Plant Pathology, D-85764, Neuherberg, Germany

<sup>9</sup>Chair of Crop Plant Genetics, Faculty of Life Sciences: Food, Nutrition and Health, University of Bayreuth, D-95447, Kulmbach, Germany

RH, 0000-0001-9852-1020; DMD, 0000-0003-2063-9955; WWW, 0000-0002-2757-8959

Artificial light at night (ALAN) threatens natural ecosystems globally. While ALAN research is increasing, little is known about how ALAN affects plants and interactions with other organisms. We explored the effects of ALAN on plant defence and plant–insect interactions using barley (*Hordeum vulgare*) and the English grain aphid (*Sitobion avenae*). Plants were exposed to 'full' or 'part' nights of 15–20 lux ALAN, or no ALAN 'control' nights, to test the effects of ALAN on plant growth and defence. Although plant growth was only minimally affected by ALAN, aphid colony growth and aphid maturation were reduced significantly by ALAN treatments. Importantly, we found strong differences between full-night and part-night ALAN treatments. Contrary to our expectations, part ALAN had stronger negative effects on aphid colony growth than full ALAN. Defence-associated gene expression was affected in some cases by ALAN, but also positively correlated with aphid colony size, suggesting that the effects of ALAN on plant defences are indirect, and regulated via direct disruption of aphid colonies rather than via ALAN-induced upregulation of defences. Mitigating ecological side effects of ALAN is a complex problem, as reducing exposure to ALAN increased its negative impact on insect herbivores.

This article is part of the theme issue 'Light pollution in complex ecological systems'.

## 1. Introduction

Artificial light at night (ALAN) is increasingly common in urban and rural areas of the world [1,2]. It is emitted by various man-made sources including street lights, building lights and advertising lights. Current levels of ALAN are unprecedented in the ecological history of life on Earth, as light levels followed a predictable periodicity of diurnal and annual rhythms, with little light at night except of stars and the moon until the recent genesis of widespread electrical lighting.

These rhythms are increasingly disrupted by ALAN in many areas of the world, and ALAN therefore is considered an important aspect of global change [1,3,4]. For instance, ALAN can interfere with natural behaviour and physiology in many taxa [5], including freshwater and marine invertebrates [6–8], terrestrial insects and several vertebrates, such as bats and birds [9–11]. Surprisingly, given their dependence on the light environment for acquisition of energy, and as signal for photomorphogenesis, phenological and defence processes, much less is known about how ALAN affects plants [12,13]. It can for instance interfere with phenology, starch turnover and defence regulation, which may affect interactions with plant-associated organisms [14]. As nights will most likely become significantly brighter [15,16], it is important to better understand the impacts of this on natural ecosystems [17]. Therefore, ALAN effects on plants and associated organisms warrant further studies [14].

Levels of ALAN will increase in the future because of the decreasing production costs, and the development of more energy- and cost-efficient light-emitting diode (LED) technology, making light widely available and affordable [2,18]. This will likely also increase the ecological consequences of ALAN. Although many forms of ALAN exist and are still in use, a clear trend towards LED technology has been observed in recent years. The most commonly used LEDs today are cool-white LEDs (with a colour temperature of over 4200 K); these are characterized by a narrow and high peak in the blue part of the irradiation spectrum and a broad and lower peak in the red part of the spectrum. Cool-white LEDs can have devastating effects on many nocturnal animal species, and several solutions have been suggested to mitigate these detrimental effects, including the use of different light colours [19,20] and reducing light hours to periods when people are generally more active [21–23]). A plausible scenario that could be implemented would be to strictly limit ALAN to the first part of the night, when human activity is still relatively high, and switching off the lights during the second half of the night. This would provide plants and animals with at least several hours of true darkness to recover. However, how ALAN and specific light schemes that reduce the number of light hours will affect plant defences and plant–herbivore interactions is not known.

One key plant parameter that is affected by the quality, quantity and duration of light that a plant is exposed to is plant defence. First, a large body of knowledge describes how additional light, i.e. supplementing plants with artificial light *beyond* the daylight hours, influences plant defences. Generally, light supplementation into the dark hours increases plant defences. For example, tomato plants supplemented with low-density light at night have significantly higher immunity to pathogens compared to plants that grow in a dark night [24]. In another study, chickpea plants supplemented with light at night showed increased levels of the antioxidant  $\beta$ -carotene [25], which may serve as a defence against oxidative stress [26]. One might conclude from this that a longer day leads to a more defended plant. A second body of scientific literature examines the effects of light reduction on plants, i.e. shading and light competition, on plant physiology, including defences, as partly mediated by changes in light intensity and spectral composition (e.g. [13,27,28]). Light competition and shading can alter key processes in the jasmonic (JA) and salicylic acid (SA) signalling pathways (reviewed in [29–31]), which is the backbone of

plant defences against pathogens and insect herbivores. Reductions in light exposure, through competition and shading, result in decreased sensitivity to and suppressed JA and SA expression [31,32], although the SA-related processes are less well-understood [31]. Light competition and shade may also lead to reduced accumulation of plant secondary metabolites, and structural and indirect defences [33–38]. Relevant to understanding the effects of ALAN on plants, one result of defence suppression under low-light or dark conditions is that plants are more susceptible to pathogens and herbivory at night [39,40]. This literature suggests that ALAN has the potential to affect plant defences but that this depends on the specifics of radiation at night.

ALAN may also affect interactions between plants and herbivores [14,41–43]. Different typical ALAN sources with different spectral characteristics have differential bottom-up effects on plant–aphid interactions [41]. For example, supplementing *Lotus pedunculatus* plants with amber ALAN caused a decrease in densities of the aphid *Acyrtosiphon pisum* compared to no ALAN in the later stages of seasonal colony dynamics [41]. Importantly, even low light intensities at night can have significant effects, as ALAN can suppress aphids even under densities as low as 0.1 lux, which is far below commonly observed levels [43]. Although the mechanisms are not fully understood yet, it could be that ALAN results in systemic activation of defence mechanisms in the plant. For instance, in one study where tomatoes were supplemented with different spectral irradiance at night, the plants exposed to red light in particular (and to a lesser extent to other light colours) showed strong induced defence responses against the root-knot nematode *Meloidogyne incognita* [42]. These defence responses were accompanied by high levels of SA in root tissues and upregulated transcript levels of SA-associated genes in the roots [42]. How irradiance levels associated with ALAN affects plant defences, however, is unknown.

In this study, we used a well-characterized plant–aphid model system, barley (*Hordeum vulgare* L.) and the English grain aphid (*Sitobion avenae* Fabricius) and exposed them to full nights of *ca* 20 lux ALAN (full-night), half nights of *ca* 20 lux ALAN (part-night) or no ALAN (control) to investigate the effects of ALAN on plant–herbivore interactions and plant defence. We hypothesized that: (i) exposure to ALAN reduces aphid colony growth compared to dark nights, mediated by an upregulation of defence responses. We predicted that aphid colonization on plants will be negatively impacted by plants, through an upregulation of plant defences. (ii) Exposure to ALAN affects plant growth and health status, compared to dark nights. We predicted that effects of ALAN will be positive, but likely minimal, as the levels of ALAN are expected to be too low to increase photosynthesis. (iii) A partial reduction in ALAN via a midnight elimination of light sources will reduce the hypothesized effects of ALAN, serving as a dark recovery time that benefits both plants and insects.

## 2. Material and methods

### (a) Soil

Soils for this experiment were derived from a former flower strip bordering an agricultural field of the Experimental Station Roggenstein (48.17989, 11.32030; altitude 524 m a.s.l.) at the Technical University of Munich. The soil was classified as sandy loam (50% sand, 33% silt, 14% clay, 2.4% soil organic

matter, pH 6.8, 1130 mg total-N kg<sup>-1</sup>, 31.5 mg available-S kg<sup>-1</sup>, 1.2 mg available-P kg<sup>-1</sup>, 126 mg available-K kg<sup>-1</sup>). The soil was sieved through a 2 cm mesh sieve to remove large stones, loam aggregates and roots.

### (b) Plant–insect model system

Barley plants (*Hordeum vulgare*, cv. ‘Scarlett’) were used as model plants. This cultivar was selected as it was used in previous studies in our research group and because it was highly susceptible to aphids [44]. As model aphids, we used the English grain aphid (*Sitobion avenae* ‘Fescue’, Hemiptera: Aphididae), a species that is specialized on grasses and is a common pest in cereal cropping systems. We have observed that this barley cultivar and aphid clone respond in terms of growth and population growth, respectively, to brief pulses of light disruption during the night in a pilot study. Aphid colonies have been maintained in a climate chamber at the institute at 15°C (night) to 20°C (day), under 16 h : 8 h L : D conditions, on barley cultivar ‘Chanson’ for several years.

### (c) Climate chamber conditions

This study was conducted in the TUM Model EcoSystem Analyzer (TUMmesa; [45]) in Freising, Germany. In this facility, eight separate high-performance climatic chambers allow for a very high level of between-chamber standardization of abiotic parameters and irradiation conditions [43]. Plants were grown under 16 h : 8 h (L : D) daylength regimes, reflecting their summer growth period, with 21°C and 16°C temperatures during day and night, respectively. Daylights were turned on at 08.00, and were shut off at 00.00, which enabled us to sample under night conditions between 06.00 and 08.00. Relative air humidity was kept constant at 60%. During the day, plants received a full-spectrum light (electronic supplementary material, figure S1c), and the photosynthetic photon flux density (PPFD) was set to 500 µmol m<sup>-2</sup> s<sup>-1</sup>.

### (d) Experimental design

We performed a full-factorial experiment involving ALAN treatment, two aphid treatments and four destructive (independent) harvesting days (figure 1). We used 16 biological replicates for ALAN control, 20 for part-night ALAN and 20 for full-night ALAN treatment combinations, respectively (totalling 448 plants). In this study, we used seven climate chambers that were assigned a specific light treatment, and conducted the experiment in two separate runs, leading to 14 chambers (four assigned ALAN control, and five part-night and full-night ALAN, respectively). ALAN assignments to chambers were changed between runs (electronic supplementary material, figure S2) to control for climate chamber effects in our models. Biological replicates were divided over chambers and run so that each chamber had four biological replicates of each combination (four replicates × eight combinations = 32 plants per chamber).

#### (i) ALAN treatments

Each chamber was equipped with four linked LED modules each, consisting of six white diodes per module (D-15-01-001, 2 W, 12 V, www.leds24.com), coupled to a dimmer to control illuminance. ALAN control chambers were kept dark at night, whereas part-night ALAN chambers were illuminated between 00:00 and 04:00. Full-night ALAN chambers were lit with ALAN between 00.00 and 08.00. Illuminance was measured using a HR4000 spectrometer (using OceanView v.1.6.7) paired to an Ocean Optics Custom Fibre Configuration OCF-102313 equipped with a cosine corrector with spectral diffusing material (Ocean Insight, Orlando, Florida, US) at pot level and illuminance was set to 15–20 lux, which are levels commonly

observed for LED street lights [13]. Measurements with the same spectral meter underneath local LED street lights showed highly fluctuating and noisy signals of 5–100 lux. Under the experimental nocturnal light conditions, PPFD levels were below the measurable range of the fixed TUMmesa light sensors, indicating fewer than 0.5 µmol photons m<sup>-2</sup> s<sup>-1</sup>. The spectral irradiance of the climate chambers during the day and spectral irradiance of the LEDs under maximum output capacity and under the dimmed ALAN treatment levels were measured and visualized after the experiment using an array-radiometer (Newport OSM400 200–800 nm, Sony CCD-Sensor 2046 px and 50 µm gap, 1 nm spectral resolution, Newport Spectra Physics GmbH, Darmstadt, Germany). Electronic supplementary material, figure S1 shows spectral irradiance for the LED modules under maximum capacity and under set ALAN treatments, and a visualization of a typical daylight spectral irradiance of the climate chambers used.

#### (ii) Plant and aphid treatments

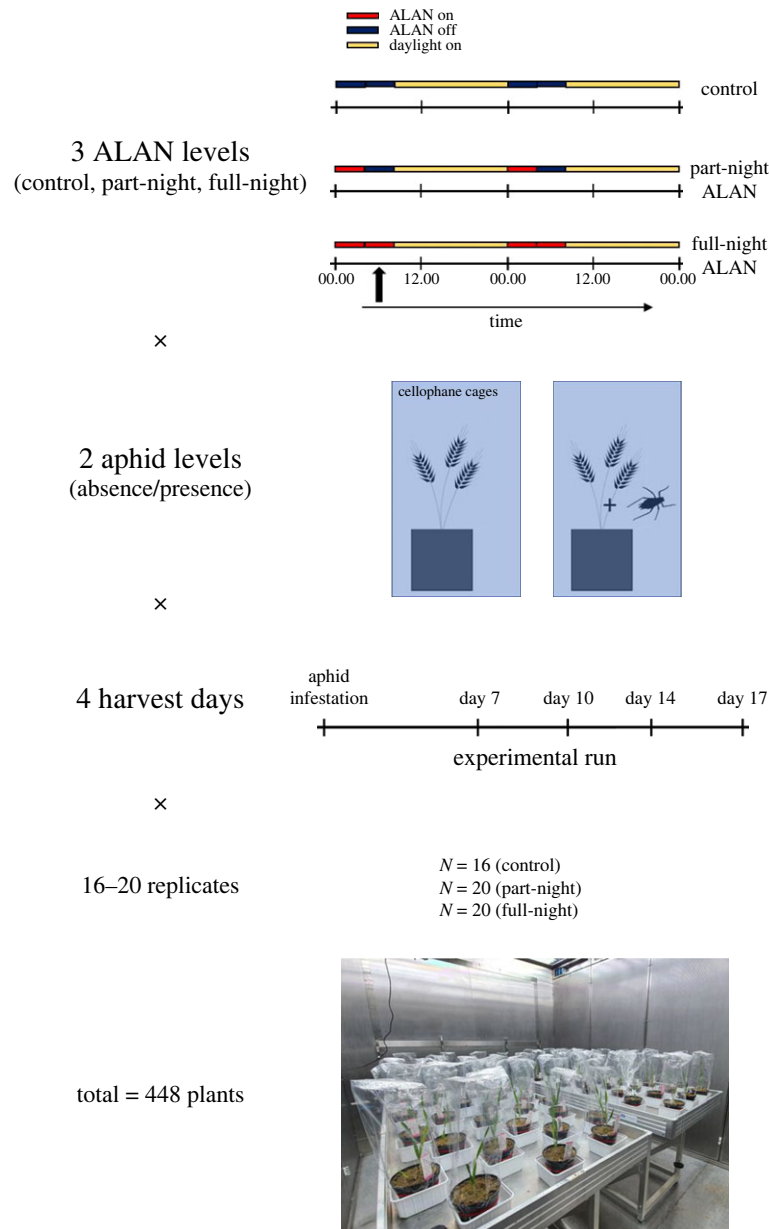
Barley plants were grown with and without aphids in single round plastic pots (400 ml, 10 cm, Meyer, Göttingen, Germany). Pots were filled with soil, watered with 50 ml of tap water and then left to acclimatize at room temperature for four days, then brought into the climate chambers, where they were left for another three days. Pots were checked daily and watered (20 ml) when the soil surface was dry. After this week of acclimatization, two surface-sterilized barley seeds (5% hypochlorite solution for 2 min, followed by a 1 min rinse with tap water) were planted in 1–2 cm deep holes made in the middle of the pot. Four days after sowing, most seedlings had germinated, and the smallest seedling was removed from each pot so that only one plant per pot remained. Plants were checked daily, and watered to need, three times a week. One week after sowing, the height of each plant was recorded, and two pre-final (N4) instar individuals of *S. avenae* ‘Fescue’ were added to all pots assigned to the aphid treatment. The plants from both the aphid and no-aphid treatments were subsequently bagged around the pot rim with a permeable cellophane bag (Kopp Verpackungen, Höheischweiler, Germany), which was secured with an elastic band to contain the aphids.

#### (iii) Temporal harvest

An *a priori* assigned subset of experimental plants from each combination was destructively sampled 7-, 10-, 14- and 17-days post-aphid infestation. This allowed us to follow aphid colony growth over time on independent plants. The destructive harvests were needed to sample the fresh plant material for gene expression.

#### (iv) Harvest and response variables

On the harvest days, total numbers of aphids were recorded. Among adult aphids, winged and unwinged aphids were distinguished. We measured plant height by ascertaining the distance between soil surface and the tip of the longest leaf. Chlorophyll levels were measured at three points on the youngest fully expanded leaf using a chlorophyll meter (Konica Minolta SPAD-502Plus, Tokyo, Japan), and we recorded the average value. Plants were placed on a cart in the evening, and destructive sampling occurred the next morning between 06.00 and 07.00, before the day lights turned on. This ensured that we assessed the effects of the ALAN treatments—which by design occurred at night—on gene expression. Chambers were opened for about 5–10 s to remove plants. The harvest itself occurred in a dark corner of the corridor, with the only light coming from a dim emergency light above a door. Shoots were harvested within 5 min of removing plants from their chamber. To this end, the fresh shoots were clipped with sterilized scissors, folded in



**Figure 1.** Schematic representation of the experimental design. The experiment was a full factorial combination of ALAN treatments, aphid treatment and temporal samplings, with replicates. ALAN treatment had three levels (control, part-night ALAN, full-night ALAN), two aphid levels (presence/absence) and four destructive sampling dates, with 16–20 replicates each. In the ALAN treatment scheme, red bars indicate ALAN lights on, dark blue bars indicate ALAN lights off and yellow bars indicate daylight on. The experiment was executed in seven climate chambers, over two experimental runs. Climate chambers were assigned specific ALAN treatments and biological replicates were divided across assigned chambers and runs. ALAN controls had 16 biological replicates, divided over four different chambers; part-night ALAN and full-night ALAN treatments had 20 biological replicates, divided over five different chambers. Each climate chamber contained 32 plants that were used for this study (pictured). The experiment had a total of 448 plants.

labelled aluminium foil and flash-frozen in liquid nitrogen. This was done for the first three replicates for each treatment combination. We clipped and dried shoots of the remaining fourth replicate to determine shoot biomass. Roots for all four replicates per treatment combination were subsequently washed and dried to determine root biomass. Roots and shoots were oven-dried at 60°C for at least three days before weighing.

#### (v) Gene expression assay

In order to assess the effects of ALAN on plant–aphid interactions, we performed a reverse transcriptase–quantitative PCR on mRNA extracted from the frozen plant leaf material. For the gene expression assay we selected the plants harvested at day 10 post-infestation, as these plants did not yet show signs of aphid stress or yellowing, and hence provided high-quality samples for our gene expression assay. Before RNA extraction, three

replicates from the same climate chamber were pooled for each treatment combination. Shoots of the three samples were ground and homogenized in liquid nitrogen. Effectively, the pooling resulted in 4–5 replicates for each ALAN–aphid combination (28 samples in total). Total RNA was extracted from the homogenized sample using a QIAGEN RNeasy Plant Mini Kit (QIAGEN, Hilden, Germany), following the manufacturer’s protocol. RNA was converted to cDNA using SuperScriptII reverse transcriptase (Invitrogen, Thermo Fisher, Waltham, Massachusetts, USA).

We selected four markers that are associated with defence-related proteins. Two markers amplify *HVPR1* and *HVPR17b*, two genes that code for pathogenesis-related proteins; they are generally involved in responses to biotrophic pathogens [46–48] and are known to be upregulated in response to aphids [49,50]. Two other markers, *HvERF-like* and *HvWRKY22*, are associated with systemic defence against bacterial and fungal pathogens in barley [51,52]. The cDNA preparation was followed by qPCR on



a 7500 Fast real-time qPCR system (Applied Biosystems, Thermo Fisher) with three technical replicates to obtain average  $C_t$  values per gene and sample. The qPCR was performed with the SensiMix SYBR low ROX kit (Bioline, Meridian Bioscience) using primers from Dey *et al.* [51] and Shrestha *et al.* [53].

For further statistical analysis, we determined delta  $C_t$  ( $\delta C_t$ ) values by calculating  $C_{t_{\text{target}}} - C_{t_{\text{reference}}}$ . Under the assumption that the endogenous reference gene has stable and high expression in all samples, indicated by a low  $C_{t_{\text{reference}}}$ , this generally results in a positive  $\delta C_t$  value for a sample, where a higher  $\delta C_t$  indicates a lower expression. As we were interested in the relative expression of genes across treatments, the  $\delta C_t$  values were used for further statistical analysis. However, since the experiment was replicated in two temporally separated runs, and this was an expected source of variation, we z-transformed the  $\delta C_t$  values per run by subtracting the run mean  $\delta C_t$  from each sample  $\delta C_t$ , and divided this by the standard deviation of the run mean  $\delta C_t$ , effectively taking out the run effect. The resulting z-score represents an effect size as the distance between run mean  $\delta C_t$  and the sample  $\delta C_t$  in units of standard deviation. As a positive  $\delta C_t$  z-score indicates downregulation, which is visually counter-intuitive, we inverted the z-score signs so that higher and lower relative gene expression match with the sign of the plotted values.

### (e) Statistical analysis

All analyses were performed in R v. 3.6.3 [54]. Linear mixed models were performed using the package 'lme4' [55] and  $p$ -values were estimated using type II Wald Chi-Square tests using car::Anova from the 'car' package [56]. Data were visualized using Ggplot2 [57].

#### (i) Plant variables

Plant variables were analysed using linear mixed models; as fixed factors we included 'ALAN treatment', 'aphid treatment' and 'harvesting day'. We included 'run' as a covariate in the model, and 'climate chamber' as a random intercept to correct for potential climate chamber effects.

#### (ii) Aphid variables

Aphid variables were analysed using generalized linear mixed models, with a Poisson error distribution; as fixed factors we included 'ALAN treatment' and 'harvesting day'. We included 'run' as a covariate in the model, and 'climate chamber' as a random intercept to correct for potential climate chamber effects. Only pots allocated to the aphid treatment were included in the analyses.

Significant effects of ALAN were further analysed using *post-hoc* Tukey tests using the 'glht()' command from the 'multcomp' package [58].

#### (iii) RT-qPCR

Gene expression data were analysed by means of z-transformed  $\delta C_t$  values using linear mixed models. 'ALAN treatment' and 'aphid treatment' were included as fixed factors, and 'climate chamber' as a random intercept to correct for potential climate chamber effects.

We assessed relationships between gene expression and aphid numbers by averaging the aphid numbers on the samples that were pooled for the gene expression assays. The relationship between aphid numbers and inverted z-transformed  $\delta C_t$  values was assessed by linear regression.

## 3. Results

From the total of 448 sowed barley plants in the study, 430 survived until their assigned harvest and were used for the

analyses, of which 213 were assigned to aphid treatment and 217 to no-aphid treatment. Across all treatment combinations, 14–20 replicates were included in the plant-level analyses.

### (a) ALAN and temporal effects on aphid colony growth

Aphid numbers increased with time, i.e. they were related to the harvest date (table 1, figure 2a). The total number of aphids per plant was significantly affected by ALAN ( $p < 0.001$ , figure 2a). At the time of final harvest, aphid numbers on plants exposed to full-night ALAN were 2.8% higher (mean 89.7 aphids) than those exposed to dark-night controls (mean 87.4 aphids), whereas plants exposed to part-night ALAN had about 19.7% lower aphid numbers (mean 70.1 aphids) than controls. Part-night ALAN treatments had 21.9% lower aphid numbers than full-night ALAN treatments, and *post-hoc* Tukey tests indicated significant difference  $\chi^2_2 = 102.5$  between all ALAN levels (electronic supplementary material, figure S3a). We observed no significant interaction between harvest day and ALAN treatment in their effects on total aphid numbers (table 1). When only adult aphids (winged and unwinged combined) were considered, numbers were affected by ALAN ( $\chi^2_2 = 10.8$ ,  $p = 0.005$ , figure 2b). At the time of harvest, adult aphid numbers were 9.8 and 32.2% lower on plants exposed to full-night (mean 8.4 aphids) and part-night ALAN (mean 11.2 aphids) than on control plants exposed to dark nights (mean 12.4 aphids), respectively. Part-night ALAN treatments had 25.0% lower adult aphid numbers than full-night ALAN. *Post-hoc* Tukey tests indicated that at harvest time only part-night ALAN treatment was significantly lower from the two other levels (electronic supplementary material, figure S3b). Harvest day also affected the number of adult aphids in the population (table 1), as the number of adult aphids in the population increased over time (figure 2b). We observed no significant interaction between harvest day and ALAN treatment in their effects on adult aphid numbers (table 1).

### (b) ALAN, aphid and temporal effects on plant performance

Plant height and shoot dry biomass were only marginally (positively) affected by ALAN (plant height:  $\chi^2_2 = 4.9$ ,  $p = 0.084$ , shoot dry biomass:  $\chi^2_2 = 5.1$ ,  $p = 0.076$ ) and plants tended to be taller under full-night ALAN treatment (figure 3a,b), although *post-hoc* Tukey tests revealed no significant differences between the three ALAN levels across all experimental plants. Root dry biomass was significantly affected by ALAN ( $\chi^2_2 = 7.0$ ,  $p = 0.030$ , figure 3c), with *post-hoc* Tukey tests revealing that part-night ALAN significantly decreased root size compared to full-night ALAN, but not compared to controls, across all experimental plants. Plant height and shoot biomass were not significantly affected by aphid treatment (table 1), but aphids marginally reduced root biomass ( $\chi^2_1 = 3.7$ ,  $p = 0.053$ , figure 3c). Harvest day positively affected plant height, shoot and root dry biomass, as plants increased in size during the experiment (table 1, figure 3). We observed no significant interactive effects between ALAN and herbivory on plant height, shoot or root biomass (table 1). ALAN significantly affected chlorophyll levels in the plants ( $\chi^2_2 = 8.1$ ,  $p = 0.018$ ), with plants exposed to full-night ALAN exhibiting on average 9%, and plants exposed to part-night ALAN 4% higher chlorophyll levels than control plants exposed to dark nights, across all plants (figure 3b). Aphid presence did not significantly

**Table 1.** Output of (generalized) linear mixed models testing the effects of replicate run, ALAN (A), herbivory (H) and time (T) on the total number of aphids, the number of adult aphids, plant height (cm), shoot biomass (g), root biomass (g) and chlorophyll levels (SPAD units). Presented are degrees of freedom, Wald's chi-square statistics and *p*-values, obtained from the models using the car::Anova command in R [56]. Significant effects (*p* < 0.05) are marked in bold, and marginally significant effects (0.05 < *p* < 0.1) in italics.

	total aphids			adult aphids			plant height			shoot dry mass			root dry mass			chlorophyll level		
	d.f.	$\chi^2$ ( <i>p</i> )		d.f.	$\chi^2$ ( <i>p</i> )		d.f.	$\chi^2$ ( <i>p</i> )		d.f.	$\chi^2$ ( <i>p</i> )		d.f.	$\chi^2$ ( <i>p</i> )		d.f.	$\chi^2$ ( <i>p</i> )	
run	1	<b>49.0 (&lt;0.001)</b>		1	3.1 (0.081)		1	<b>64.4 (&lt;0.001)</b>		1	<b>13.9 (&lt;0.001)</b>		1	0.7 (0.400)		1	<b>35.4 (&lt;0.001)</b>	
ALAN (A)	2	<b>102.5 (&lt;0.001)</b>		2	<b>10.8 (0.005)</b>		2	4.9 (0.085)		2	5.1 (0.076)		2	<b>7.0 (0.030)</b>		2	<b>8.1 (0.017)</b>	
herbivory (H)	—	—		—	—		1	0.6 (0.452)		1	1.9 (0.166)		1	3.7 (0.053)		1	2.7 (0.101)	
time (T)	1	<b>3073.6 (&lt;0.001)</b>		1	<b>420.8 (&lt;0.001)</b>		1	<b>119.3 (&lt;0.001)</b>		1	<b>19.1 (&lt;0.001)</b>		1	<b>4.4 (0.035)</b>		1	<b>64.7 (&lt;0.001)</b>	
A × H	—	—		—	—		2	1.7 (0.438)		2	0.1 (0.936)		2	2.5 (0.284)		2	1.5 (0.483)	
A × T	2	4.4 (0.111)		2	3.2 (0.206)		1	0.2 (0.923)		1	2.7 (0.261)		1	1.4 (0.486)		1	1.3 (0.518)	
H × T	—	—		—	—		2	0.0 (0.984)		2	2.7 (0.103)		2	1.9 (0.167)		2	0.2 (0.646)	
A × H × T	—	—		—	—		2	0.6 (0.738)		2	0.7 (0.690)		2	0.0 (0.992)		2	1.3 (0.519)	

affect chlorophyll levels (table 1), but these were significantly affected by harvest day, as levels decreased when plants grew older (figure 3*b*).

### (c) ALAN and aphid effects on plant gene expression

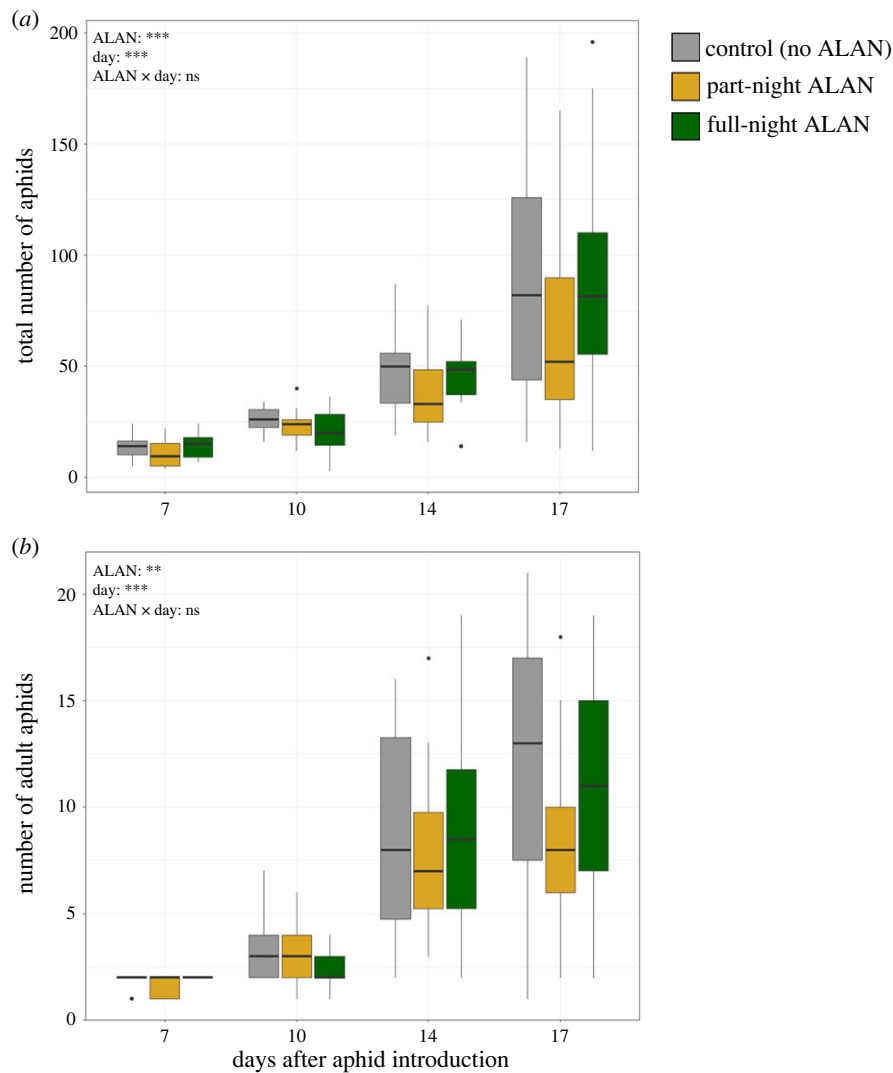
The expression of some defence genes was marginally or significantly affected by the ALAN treatments, while the presence of aphids marginally or significantly increased expression of most defence genes (table 2). The expression of *HvWRKY22* was marginally affected by ALAN treatments ( $\chi^2_2 = 5.9$ , *p* = 0.053, figure 4*a*), with a trend for expression to be downregulated when plants were exposed to full-night or part-night ALAN treatments (figure 4*a*). The expression of *HvWRKY22* was strongly upregulated in aphid treatments ( $\chi^2_1 = 8.0$ , *p* = 0.005, figure 4*a*). No interactive effects were observed on the expression of *HvWRKY22* (table 2). The expression of *HvPR1* was marginally upregulated by aphid treatments ( $\chi^2_1 = 3.6$ , *p* = 0.057, figure 4*b*), but effects of ALAN treatments or interactive effects on the expression of *HvPR1* were not observed (table 2). The expression of *HvPR17b* differed significantly between ALAN treatments ( $\chi^2_2 = 10.1$ , *p* = 0.006, figure 4*c*) and was marginally upregulated by aphid treatments ( $\chi^2_1 = 3.1$ , *p* = 0.077, figure 4*c*). *Post-hoc* Tukey tests indicated that expression of *HvPR17b* was significantly lower when plants were exposed to full-night or part-night ALAN, compared to ALAN controls across all plants. The expression of the *HvERF-like* gene was not significantly affected by any of the treatments (figure 4*d*).

The total number of aphids on those plants used for qPCR analyses positively correlated with the expression of *HvWRKY22* ( $R^2 = 0.31$ ,  $F_{1,12} = 5.5$ , *p* = 0.037; figure 5*a*), *HvPR1* ( $R^2 = 0.55$ ,  $F_{1,12} = 14.8$ , *p* = 0.002; figure 5*b*) and *HvPR17b* ( $R^2 = 0.71$ ;  $F_{1,12} = 29.4$ , *p* < 0.001; figure 5*c*), but not with the *HvERF-like* gene ( $R^2 = 0.002$ ,  $F_{1,12} = 0.02$ , *p* = 0.891; figure 5*d*).

## 4. Discussion

In this study, we exposed plants and associated aphids to either full nights of ALAN, nights with a part-night ALAN treatment, where ALAN was switched off halfway through the night, or controls with completely dark nights. We found that plant growth was only minimally affected by ALAN, whereas aphid colony growth and the number of adult aphids in the colony were impacted significantly by ALAN treatments. Importantly, we found strong differences between full- and part-night ALAN treatments. Contrary to our hypotheses, ALAN mitigation—by limiting the duration of light exposure at night—had stronger negative effects on aphid colony growth than nights with full exposure to ALAN. Gene expression assays revealed that defence-associated gene expression was affected by ALAN and aphid presence in three out of four genes, but in these three genes, expression positively correlated with aphid colony size, suggesting that the effects of ALAN on plant defences are likely regulated through indirect effects of ALAN on plants via direct disruptive effects on aphid colonies, rather than via regulation by the plant in direct response to ALAN.

In agreement with our first hypothesis, exposure to ALAN suppressed aphid colony growth, although particularly in the full-night ALAN treatment, we observed a recovery of aphid numbers over time. Previous studies show suppressive ALAN effects on plant–aphid interactions in other model systems, where aphid suppression was associated with changes

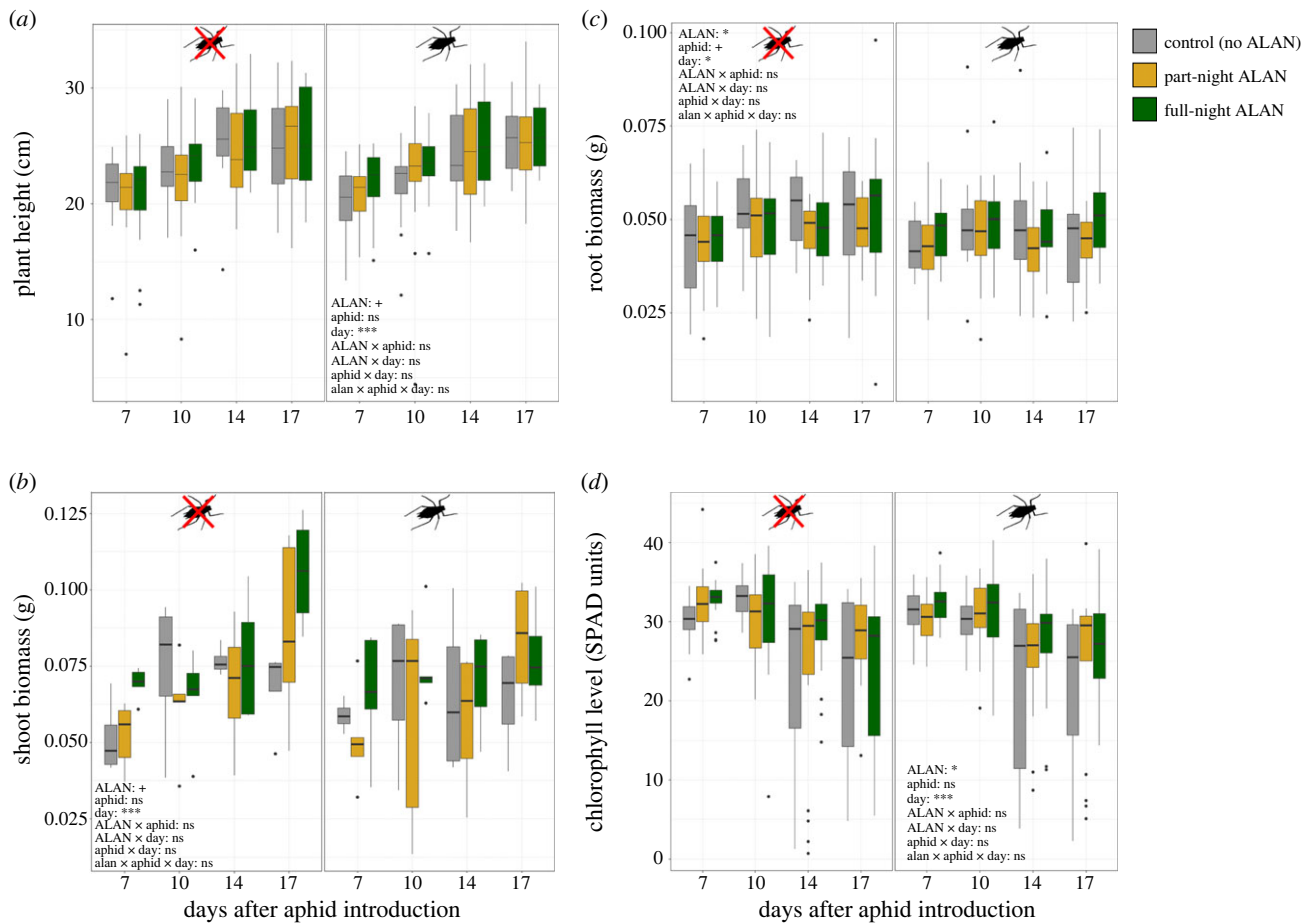


**Figure 2.** Box plots depicting effects of ALAN treatments and sampling time on (a) aphid colony size ( $n = 16$ – $20$ ) and (b) number of adult aphids within the population ( $n = 16$ – $20$ ). Box colours depict ALAN treatments, with grey being control, yellow part-night ALAN and green full-night ALAN. Boxes represent median values with upper and lower quartiles, and whiskers represent  $1.5 \times$  the interquartile range; individual dots represent outliers. Simplified mixed model output is indicated in the graphs with significance (ns = not significant, +  $p = 0.05$ – $0.10$ , \*  $p < 0.05$ , \*\*  $p < 0.01$ , \*\*\*  $p < 0.001$ ) and detailed model output can be found in table 1. *Post-hoc* Tukey tests were performed on a subset of the data on the final harvest point, and visualized separately for the subset in electronic supplementary material, figure S3.

in plant phenology and increases in aphid parasitism by parasitoids [41,43,59,60]. Importantly, our study shows that aphid colony decline also takes place without such external confounding factors. Contrary to the present study, a previous field experiment with *H. vulgare* and *S. avenae* detected no effects of ALAN on final aphid densities at nine weeks [43], indicating that the strongest effects may be early after colonization and may disappear over time, which is in line with our observations that aphid numbers recover in full-night ALAN treatments. However, it should be noted that the referenced study included parasitoids, which as aphid antagonists may have affected aphid colony sizes. Other studies that have assessed ALAN effects on aphid colony size over time have generally included repeated measures of the same colony [41,59], which allows the assessment of individual colony responses but also elevates the risk of including colony-specific effects that persist over time. In our study, aphid colony growth was assessed over time on independent samples, which provides a higher temporal resolution and also reinforces the generality of ALAN impacts on aphid colony formation, especially during early colonization.

An important question is what drives the ALAN-induced impacts on aphid numbers? Two answers are plausible. On

the one hand, ALAN could influence aphids indirectly, via changes in plant nutritional quality or quantity (plant defence compound and nutritional quality or plant size), which commonly affects insect performance through bottom-up effects [61]. On the other hand, ALAN may directly impact aphids through disturbance of natural behaviour such as settling times that may limit feeding, and ultimately, fitness. Our data suggest that plant size was only marginally affected by ALAN. Although various studies have suggested that resource availability could be the main driver through which ALAN impacts insect responses [41,59], plant sizes under levels of infestation observed in our study are unlikely to be limiting to aphid population growth, as plants were large enough to sustain the relatively small aphid numbers. It thus seems more plausible that potential bottom-up effects are mediated via plant quality, not quantity. We observed a significant increase in chlorophyll levels—a proxy for plant health and quality—when plants were exposed to ALAN, but as our data suggested only a weak and positive relationship with aphid numbers, it is highly unlikely that chlorophyll levels alone are responsible for aphid suppression under ALAN. Future research should focus on how ALAN may affect plant quality for aphids, and especially the diurnal variation in the phloem composition



**Figure 3.** Box plots depicting effects of ALAN treatments and sampling time on (a) plant height ( $n = 16–20$ ), (b) chlorophyll content (SPAD units) ( $n = 16–20$ ), (c) root ( $n = 16–20$ ) and (d) shoot dry biomass ( $n = 4–5$ ). Box colours depict ALAN treatments, with grey being control, yellow part-night ALAN, and green full-night ALAN. Boxes represent median values with upper and lower quartiles, and whiskers  $1.5\times$  the interquartile range; individual dots are outliers. Simplified mixed model output is indicated in the graphs with significance (ns = not significant,  $+p = 0.05–0.10$ ,  $*p < 0.05$ ,  $**p < 0.01$ ,  $***p < 0.001$ ), and detailed model output can be found in table 1.

**Table 2.** Output of linear mixed models testing the effects of ALAN (A), herbivory (H) and time (T) on the standardized expression of *HvWRKY22*, *HvPR1*, *HvPR17b*, and *HvERF-like* marker genes. Expression data was standardized by replicate run, which was therefore excluded from the model. Presented are degrees of freedom, Wald's Chi-square statistics and  $p$ -values, obtained from the models using the `car::Anova` command in R. Significant effects ( $p < 0.05$ ) are marked in bold, and marginally significant effects ( $0.05 < p < 0.1$ ) in italics.

	<i>HvWRKY22</i>		<i>HvPR1</i>		<i>HvPR17b</i>		<i>HvERF-like</i>	
	d.f.	$\chi^2$ (p)	d.f.	$\chi^2$ (p)	d.f.	$\chi^2$ (p)	d.f.	$\chi^2$ (p)
ALAN (A)	2	5.9 (0.053)	2	3.3 (0.192)	2	<b>10.1 (0.006)</b>	2	0.5 (0.779)
herbivory (H)	1	<b>8.0 (0.005)</b>	1	3.6 (0.057)	1	3.1 (0.077)	1	0.0 (0.998)
A $\times$ H	2	3.5 (0.170)	2	2.4 (0.302)	2	1.9 (0.381)	2	1.3 (0.531)

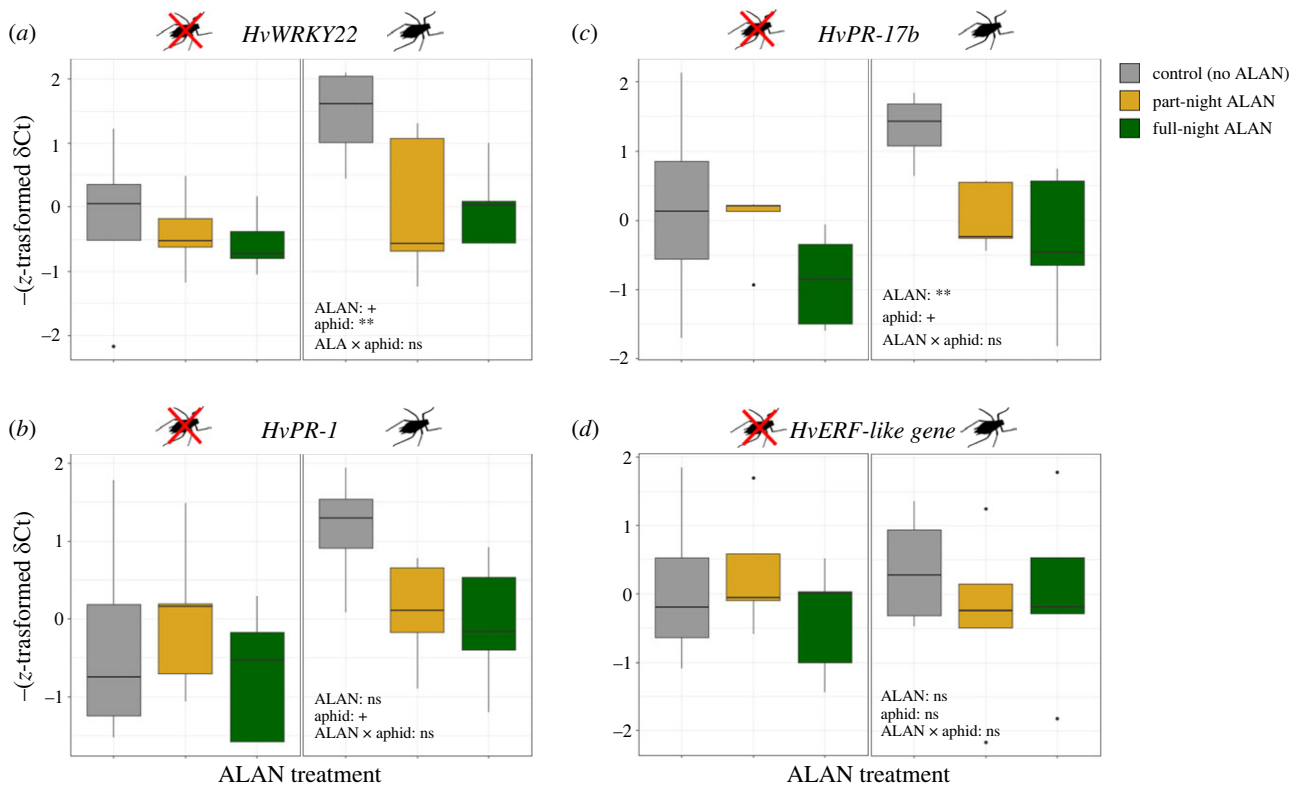
[62], in order to better understand the possible links between ALAN, the plant and ALAN-induced aphid suppression.

We assessed the expression of four defence-associated genes in barley corresponding to different defence pathways, to test whether exposure of plants to ALAN would result in a regulation of specific pathways. We measured expression of two PR genes that are commonly associated with innate immunity in plants [47,63]. In particular, *HvPR1* and *HvPR17b* are induced upon infection of barley with pathogens and are presumed to positively correlate with defence [46,48–50]. Further, *HvWRKY22* and *HvERF-like* have previously been positively associated with SAR-like systemic defence in barley [51]. We observed a marginally significant effect ( $p = 0.053$ ) of ALAN

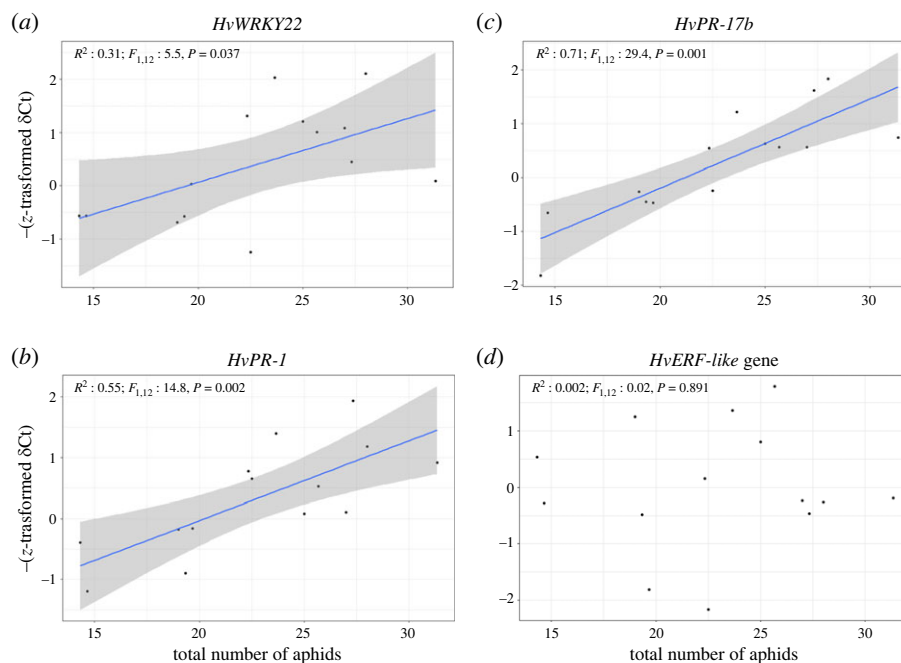
on the expression of *HvWRKY22*, and a strongly significant effect of ALAN on the expression of *HvPR17b*. We did not find any effect of ALAN or aphid treatments on the expression of *HvERF-like* gene expression, suggesting that this gene, which is associated with systemic pathways [51], is unlikely to respond to variation in light at night and is not involved in plant defences against aphids.

Contrary to our expectation that ALAN would upregulate plant defences, ALAN decreased the expression of *HvWRKY22* and *HvPR17b*, and we observed similar but non-significant patterns in *HvPR1*. In fact, for *HvWRKY22*, *HvPR1* and *HvPR17b*, but not for *HvERF-like* gene, the gene expression correlated tightly and positively with the aphid numbers present on the





**Figure 4.** Box plots depicting effects of ALAN treatments on standardized gene expression of (a) *HvWRKY22*, (b) *HvPR-1*, (c) *HvPR-17b* and (d) *HVERF-like* gene markers (each  $n = 4$  (control) or 5 (treatment)). Box colours depict ALAN treatments, with grey being control, yellow part-night ALAN, and green full-night ALAN. Boxes represent median values with upper and lower quartiles, and whiskers represent  $1.5 \times$  the interquartile range; individual dots represent outliers. Simplified mixed model output is indicated in the graphs with significance (ns = not significant,  $+p = 0.05-0.10$ ,  $*p < 0.05$ ,  $**p < 0.01$ ,  $***p < 0.001$ ), and detailed model output can be found in table 2.



**Figure 5.** Relationships between the average number of aphids on barley plants assigned to a pooled sample, and the standardized gene expression of (a) *HvWRKY22*, (b) *HvPR-1*, (c) *HvPR-17b* and (d) *HVERF-like* gene markers across ALAN treatments. Linear correlations with 95% confidence intervals were fit if the linear relationship was significant.

plant. This suggests that patterns of expression differing between ALAN treatments were likely not the result of direct ALAN effects on plant defence regulation, but instead more likely a result of direct disruptive effects of ALAN on aphid feeding or settling behaviour and resultant suppression of colony growth, and that this, in turn, is reflected by a reduced transcript

accumulation of certain defence-associated genes. Importantly, we cannot conclusively state from our results that ALAN does not affect plant defences. Our analyses focused on a limited number of genes that are involved in constitutive and induced plant defence responses against aphids. A more holistic approach, for instance using meta-transcriptomics of plants

under ALAN or dark night treatments could reveal how ALAN may affect transcriptional regulation of phytohormonal defence mediation, as well as other pathways involved, for instance, in secondary metabolism.

There are various alternative plant physiological pathways through which ALAN might affect the phytobiome [14]. For instance, exposure to ALAN can disrupt stomatal activity, above–belowground allocation and the nocturnal starch turnover from above- to below-ground compartments [64–66]. Disruptions in starch metabolism may result in changes in concentration and composition of sugars in phloem tissues, and as aphids are directly affected by phloem sugar concentrations via the ‘sugar barrier’, which requires strong osmoregulation in the aphid gut to excrete it [62], it is entirely plausible that such a pathway might affect probing, feeding and reproductive success, leading to altered aphid colony growth. As such, future studies should investigate ALAN effects on sugars, amino acids, micronutrients and secondary metabolites in the phloem that are important for aphid performance. For instance, changes in carbon metabolism over diurnal cycles can greatly impact interactions between plants and their microbiome [67], and knowing how ALAN may impact on carbon metabolism and affect interactions between plants and other organisms will be an exciting direction for future research [14].

ALAN can also directly impact on aphid colony growth, via effects of light on aphid behaviour. Aphids perceive light intensity and can respond to low light intensities by producing winged adults [68]. Aphids also express diurnal rhythmicity in locomotor and metabolic activity [69], even independent of their plant hosts, which are strongly rhythmic [70]. Despite strong cyclic circadian clock gene expression, aphids continue the various stages of their feeding cycles throughout the night, which is hypothesized to be an important element for osmoregulation of high phloem sugar content [62,71]. Light has been shown to disrupt aphid behaviour, and more strongly so during the night [72]. This effect is likely stronger in plants with more open canopies, where light reaches the insect directly. We speculate that ALAN led to disruptions of settling and feeding behaviour, lowering the uptake of resources, which in turn explain smaller aphid colony sizes and numbers of matured adults, and the tightly linked defence gene expression, as observed under our treatments. Further tests to examine how ALAN impacts aphid feeding behaviour should make use of electrical penetration graph analyses [73], which record the probing behaviour of aphids over time, to compare aphid behaviour under dark and lit nights.

An important finding is that contrary to our hypothesis, a mitigation of ALAN levels at night through a midnight shut-off of the light source enhanced adverse ecological effects of ALAN on insects. A popular belief is that the ecological side effects of light pollution could be mitigated by optimizing lighting schemes to match human activity patterns, and turning off lights after peak activity. However, our data suggest that after experiencing a short duration of ALAN, turning off the lights has more detrimental effects than keeping them on. These findings are difficult to explain. One possibility is that a midnight shutoff strategy may be experienced as a double ecological stressor. First, the organisms experience a lit night, which may be seen as the first stressor, which is then followed by a severely reduced dark recovery period, i.e. further stress, although the mechanism is unclear. However, we argue that the ecological consequences of

specific mitigation strategies need to be studied before they are readily implemented, as despite good intentions, they may sometimes have unexpected side effects [74].

Our study also highlights the physical limitations of ALAN research. One example is the typical choice to use illuminance—expressed in lux, which is a photometric unit—in most ALAN research. This means that the radiometric quantity will be weighted with a visual function describing the wavelength-dependent response of the human eye. The photopic function of the human eye has its maximum at 550 nm, while 380–780 nm is judged as ‘light’ [75]. However, light is in the physical sense better described as radiant energy per time per effective receiver surface and wavelength interval. This is where ALAN research becomes more problematic, as its spectral irradiance generally falls below thresholds measurable by standard equipment. Another problematic aspect is that in the lower ranges of spectral irradiance, the ratio of noise to signal is very high (cf. electronic supplementary material, figure S1b). Measurements conducted under LED street lights in the field confirm low signals of irradiance, with comparatively high levels of noise. A better physical characterization of ALAN irradiance spectra, and its reach in nature, is essential to understand the breadth of ecological impacts, especially on sessile organisms such as plants.

Despite significant advances in the field, the effects of ALAN on plants and plant-associated organisms are understudied [14]. We aimed to generate a better understanding of how ALAN impacts on aphid colony growth over time, as mediated via plant quality and quantity. In general, ALAN impacts on barley plants appear to be minor, but nevertheless exposure to ALAN leads to substantial effects on aphid colony growth, which appear to be direct disruptive effects of ALAN rather than plant-mediated effects. Our study especially highlights the difficulties associated with mitigation of the ecological side effects of ALAN, as a reduction of the light intervals increased the negative impact of ALAN on aphids. Rather little is known about how ALAN affects insect communities on crops and wild plant species. These findings highlight the need to study the impacts of ALAN in natural ecosystems, and we show that the solution to light pollution may be more complex than the flip of a switch.

**Ethics.** This work did not require ethical approval from a human subject or animal welfare committee.

**Data accessibility.** The data are provided in electronic supplementary material [76].

**Authors’ contributions.** R.H.: conceptualization, data curation, formal analysis, investigation, methodology, project administration, validation, visualization, writing—original draft, writing—review and editing; O.S.: investigation, methodology, writing—review and editing; M.B.: conceptualization, investigation, methodology, validation, writing—review and editing; D.M.D.: conceptualization, investigation, methodology, validation, writing—review and editing; C.K.: data curation, formal analysis, methodology, validation; J.K.: conceptualization, investigation, methodology, writing—review and editing; A.K.: formal analysis, investigation, software, validation, visualization, writing—review and editing; Z.P.: investigation, methodology, project administration; M.S.: conceptualization, investigation, methodology, validation, writing—review and editing; S.S.: investigation, methodology, project administration, validation; J.S.: conceptualization, investigation, methodology, resources, validation, writing—review and editing; C.V.: conceptualization, formal analysis, investigation, methodology, resources, validation, writing—original draft, writing—review and editing; W.W.W.: conceptualization, funding acquisition, investigation, methodology, resources, validation, writing—review and editing.

All authors gave final approval for publication and agreed to be held accountable for the work performed therein.

**Conflict of interest declaration.** We declare we have no competing interests.

**Funding.** The experiment was supported by DFG grant 397565003 WE 3081/36-1 awarded to Sharon Zytynska and W.W.W.

**Acknowledgements.** We thank Roman Meier for advice and engineering support in the TUMmesa phytochamber facilities. We thank Hans Hausladen and Stefan Kimmelman for advice and help in obtaining soil for the pot experiment. We thank Sharon Zytynska for supporting the project.

## References

- Gaston KJ, Visser ME, Hölker F. 2015 The biological impacts of artificial light at night: the research challenge. *Phil. Trans. R. Soc. B* **370**, 20140133. (doi:10.1098/rstb.2014.0133)
- Kyba, C. C. M. et al. L. (2017). Artificially lit surface of Earth at night increasing in radiance and extent. *Sci. Adv.*, **3**, e1701528. (doi:10.1126/sciadv.1701528)
- Senzaki M et al. 2020 Sensory pollutants alter bird phenology and fitness across a continent. *Nature* **587**, 605–609. (doi:10.1038/s41586-020-2903-7)
- Falcón J, Torriglia A, Attia D, Viénot F, Gronfier C, Behar-Cohen F, Martinsons C, Hicks D. 2020 Exposure to artificial light at night and the consequences for flora, fauna, and ecosystems. *Front. Neurosci.* **14**, 1183. (doi:10.3389/fnins.2020.602796)
- Sanders D, Frago E, Kehoe R, Patterson C, Gaston KJ. 2021 A meta-analysis of biological impacts of artificial light at night. *Nat. Ecol. Evol.* **5**, 74–81. (doi:10.1038/s41559-020-01322-x)
- Duarte C et al. 2019 Artificial light pollution at night (ALAN) disrupts the distribution and circadian rhythm of a sandy beach isopod. *Environ. Pollut.* **248**, 565–573. (doi:10.1016/j.envpol.2019.02.037)
- Perkin EK, Hölker F, Richardson JS, Sadler JP, Wolter C, Tockner K. 2011 The influence of artificial light on stream and riparian ecosystems: questions, challenges, and perspectives. *Ecosphere* **2**, 1–16. (doi:10.1890/ES11-00241.1)
- Ayalon I, de Barros Marangoni LF, Benichou JI, Avisar D, Levy O. 2019 Red Sea corals under Artificial Light Pollution at Night (ALAN) undergo oxidative stress and photosynthetic impairment. *Glob. Change Biol.* **25**, 4194–4207. (doi:10.1111/gcb.14795)
- Desouhant E, Gomes E, Mondy N, Amat I. 2019 Mechanistic, ecological, and evolutionary consequences of artificial light at night for insects: review and prospective. *Entomol. Exp. Appl.* **167**, 37–58. (doi:10.1111/eea.12754)
- Stone EL, Harris S, Jones G. 2015 Impacts of artificial lighting on bats: a review of challenges and solutions. *Mammal. Biol.* **80**, 213–219. (doi:10.1016/j.mambio.2015.02.004)
- Dominoni D, Quetting M, Partecke J. 2013 Artificial light at night advances avian reproductive physiology. *Proc. R. Soc. B* **280**, 20123017. (doi:10.1098/rspb.2012.3017)
- Briggs WR. 2006 Physiology of plant responses to artificial night lighting. In *Ecological consequences of artificial night lighting* (eds C Rich, T Longcore), pp. 389–411. Washington, DC: Island Press.
- Bennie J, Davies TW, Cruse D, Gaston KJ. 2016 Ecological effects of artificial light at night on wild plants. *J. Ecol.* **104**, 611–620. (doi:10.1111/1365-2745.12551)
- Heinen R. 2021 A spotlight on the phytobiome: plant-mediated interactions in an illuminated world. *Basic Appl. Ecol.* **57**, 146–158. (doi:10.1016/j.baee.2021.10.007)
- Gaston KJ. 2018 Lighting up the nighttime. *Science* **362**, 744–746. (doi:10.1126/science.aau8226)
- Kyba CCM, Ruhtz T, Fischer J, Hölker F. 2011 Cloud coverage acts as an amplifier for ecological light pollution in urban ecosystems. *PLoS ONE* **6**, e17307. (doi:10.1371/journal.pone.0017307)
- Rich C, Longcore T (eds) 2013 *Ecological consequences of artificial night lighting*. Washington, DC: Island Press.
- Hölker F, Wolter C, Perkin EK, Tockner K. 2010 Light pollution as a biodiversity threat. *Trends Ecol. Evol.* **25**, 681–682. (doi:10.1016/j.tree.2010.09.007)
- van Geffen KG, van Grunsven RH, van Ruijven J, Berendse F, Veenendaal EM. 2014 Artificial light at night causes diapause inhibition and sex-specific life history changes in a moth. *Ecol. Evol.* **4**, 2082–2089. (doi:10.1002/ece3.1090)
- Spoelstra K, van Grunsven RH, Donners M, Gienapp P, Huigens ME, Slaterus R, Berendse F, Visser ME, Veenendaal E. 2015 Experimental illumination of natural habitat—an experimental set-up to assess the direct and indirect ecological consequences of artificial light of different spectral composition. *Phil. Trans. R. Soc. B* **370**, 20140129. (doi:10.1098/rstb.2014.0129)
- International Darksky Association. 2023 *Resources – what is light pollution?* Tucson, AZ: International Darksky Association. (See <https://darksky.org/resources/what-is-light-pollution/>)
- Gaston KJ, Davies TW, Bennie J, Hopkins J. 2012 Reducing the ecological consequences of night-time light pollution: options and developments. *J. Appl. Ecol.* **49**, 1256–1266. (doi:10.1111/j.1365-2664.2012.02212.x)
- Day J, Baker J, Schofield H, Mathews F, Gaston KJ. 2015 Part-night lighting: implications for bat conservation. *Anim. Conserv.* **18**, 512–516. (doi:10.1111/acv.12200)
- Yang YX et al. 2015a RNA-seq analysis reveals the role of red light in resistance against *Pseudomonas syringae* pv. *tomato* DC3000 in tomato plants. *BMC Genomics* **16**, 120. (doi:10.1186/s12864-015-1228-7)
- Wu MC, Hou CY, Jiang CM, Wang YT, Wang CY, Chen HH, Chang HM. 2007 A novel approach of LED light radiation improves the antioxidant activity of pea seedlings. *Food Chem.* **101**, 1753–1758. (doi:10.1016/j.foodchem.2006.02.010)
- Mittler R. 2002 Oxidative stress, antioxidants and stress tolerance. *Trends Plant Sci.* **7**, 405–410. (doi:10.1016/S1360-1385(02)02312-9)
- Smith HL, McAusland L, Murchie EH. 2017 Don't ignore the green light: exploring diverse roles in plant processes. *J. Exp. Bot.* **68**, 2099–2110. (doi:10.1093/jxb/erx098)
- Grubisic M, van Grunsven RH, Manfrin A, Monaghan MT, Hölker F. 2018 A transition to white LED increases ecological impacts of nocturnal illumination on aquatic primary producers in a lowland agricultural drainage ditch. *Environ. Pollut.* **240**, 630–638. (doi:10.1016/j.envpol.2018.04.146)
- Ballaré CL. 2009 Illuminated behaviour: phytochrome as a key regulator of light foraging and plant anti-herbivore defence. *Plant Cell Environ.* **32**, 713–725. (doi:10.1111/j.1365-3040.2009.01958.x)
- Ballaré CL. 2014 Light regulation of plant defense. *Annu. Rev. Plant Biol.* **65**, 335–363. (doi:10.1146/annurev-arplant-050213-040145)
- Ballaré CL, Pierik R. 2017 The shade-avoidance syndrome: multiple signals and ecological consequences. *Plant Cell Environ.* **40**, 2530–2543. (doi:10.1111/pce.12914)
- Wit Md, Spoel SH, Sanchez-Perez GF, Gommers CM, Pieterse CM, Voeseenek LA, Pierik R. 2013 Perception of low red: far-red ratio compromises both salicylic acid- and jasmonic acid-dependent pathogen defences in *Arabidopsis*. *Plant J.* **75**, 90–103. (doi:10.1111/tpj.12203)
- Izaguirre MM, Mazza CA, Biondini M, Baldwin IT, Ballaré CL. 2006 Remote sensing of future competitors: impacts on plant defenses. *Proc. Natl Acad. Sci.* **103**, 7170–7174. (doi:10.1073/pnas.0509805103)
- Izaguirre MM, Mazza CA, Astigueta MS, Ciarla AM, Ballaré CL. 2013 No time for candy: passionfruit (*Passiflora edulis*) plants down-regulate damage-induced extra floral nectar production in response to light signals of competition. *Oecologia* **173**, 213–221. (doi:10.1007/s00442-013-2721-9)
- Engelen-Egles G, Holden G, Cohen JD, Gardner G. 2006 The effect of temperature, photoperiod, and light quality on gluconasturtiin concentration in watercress (*Nasturtium officinale* R. Br.). *J. Agric. Food Chem.* **54**, 328–334. (doi:10.1021/jf051857o)
- Moreno JE, Tao Y, Chory J, Ballaré CL. 2009 Ecological modulation of plant defense via phytochrome control of jasmonate sensitivity. *Proc. Natl Acad. Sci. USA* **106**, 4935–4940. (doi:10.1073/pnas.0900701106)

37. Agrawal AA, Kearney EE, Hastings AP, Ramsey TE. 2012 Attenuation of the jasmonate burst, plant defensive traits, and resistance to specialist monarch caterpillars on shaded common milkweed (*Asclepias syriaca*). *J. Chem. Ecol.* **38**, 893–901. (doi:10.1007/s10886-012-0145-3)
38. Cargnel MD, Demkura PV, Ballaré CL. 2014 Linking phytochrome to plant immunity: low red: far-red ratios increase *Arabidopsis* susceptibility to *Botrytis cinerea* by reducing the biosynthesis of indolic glucosinolates and camalexin. *New Phytol.* **204**, 342–354. (doi:10.1111/nph.13032)
39. Roden LC, Ingle RA. 2009 Lights, rhythms, infection: the role of light and the circadian clock in determining the outcome of plant–pathogen interactions. *Plant Cell* **21**, 2546–2552. (doi:10.1105/tpc.109.069922)
40. Kraiselburd I, Moyano L, Carrau A, Tano J, Orellano EG. 2017 Bacterial photosensory proteins and their role in plant–pathogen interactions. *Photochem. Photobiol.* **93**, 666–674. (doi:10.1111/php.12754)
41. Bennie J, Davies TW, Cruse D, Inger R, Gaston KJ. 2015b Cascading effects of artificial light at night: resource-mediated control of herbivores in a grassland ecosystem. *Phil. Trans. R. Soc. B* **370**, 20140131. (doi:10.1098/rstb.2014.0131)
42. Yang YX *et al.* 2015b Light-induced systemic resistance in tomato plants against root-knot nematode *Meloidogyne incognita*. *Plant Growth Regulation* **76**, 167–175. (doi:10.1007/s10725-014-9986-9)
43. Sanders D, Kehoe R, Cruse D, van Veen FF, Gaston KJ. 2018 Low levels of artificial light at night strengthen top-down control in insect food web. *Curr. Biol.* **28**, 2474–2478. (doi:10.1016/j.cub.2018.05.078)
44. Sanchez-Mahecha O, Klink S, Heinen R, Rothballer M, Zytynska S. 2022 Impaired microbial N-acyl homoserine lactone signalling increases plant resistance to aphids across variable abiotic and biotic environments. *Plant Cell Environ.* **45**, 3052–3069. (doi:10.1111/pce.14399)
45. Roy J *et al.* 2021 Ecotrons: powerful and versatile ecosystem analysers for ecology, agronomy and environmental science. *Glob. Change Biol.* **27**, 1387–1407. (doi:10.1111/gcb.15471)
46. Christensen AB, Cho BH, Næsby M, Gregersen PL, Brandt J, Madriz-Ordeñana K, Collinge DB, Thordal-Christensen H. 2002 The molecular characterization of two barley proteins establishes the novel PR-17 family of pathogenesis-related proteins. *Mol. Plant Pathol.* **3**, 135–144. (doi:10.1046/j.1364-3703.2002.00105.x)
47. van Loon LC, Rep M, Pieterse CM. 2006 Significance of inducible defense-related proteins in infected plants. *Annu. Rev. Phytopathol.* **44**, 135–162. (doi:10.1146/annurev.phyto.44.070505.143425)
48. Zhang WJ *et al.* 2012 Interaction of barley powdery mildew effector candidate CSEP0055 with the defence protein PR17c. *Mol. Plant Pathol.* **13**, 1110–1119. (doi:10.1111/j.1364-3703.2012.00820.x)
49. Grönberg N. 2006 Induction of pathogenesis-related genes, PR-17a and N-methyltransferase, in barley infested by the aphid *Rhopalosiphum padi*. Masters thesis, Södertörn University, Flemingsberg, Sweden. (See <http://www.diva-portal.org/smash/get/diva2:16371/FULLTEXT01.pdf>.)
50. Delp G, Gradin T, Åhman I, Jonsson LM. 2009 Microarray analysis of the interaction between the aphid *Rhopalosiphum padi* and host plants reveals both differences and similarities between susceptible and partially resistant barley lines. *Mol. Genet. Genom.* **281**, 233–248. (doi:10.1007/s00438-008-0409-3)
51. Dey S *et al.* 2014 Bacteria-triggered systemic immunity in barley is associated with WRKY and ETHYLENE RESPONSIVE FACTORS but not with salicylic acid. *Plant Physiol.* **166**, 2133–2151. (doi:10.1104/pp.114.249276)
52. Lenk M *et al.* 2019 Pipecolic acid is induced in barley upon infection and triggers immune responses associated with elevated nitric oxide accumulation. *Mol. Plant Microbe Interact.* **32**, 1303–1313. (doi:10.1094/MPMI-01-19-0013-R)
53. Shrestha A, Elhady A, Adss S, Wehner G, Böttcher C, Heuer H, Ordon F, Schikora A. 2019 Genetic differences in barley govern the responsiveness to N-acyl homoserine lactone. *Phytobiomes J.* **3**, 191–202. (doi:10.1094/PBIOMES-03-19-0015-R)
54. R Core Team. 2020 *R: A language and environment for statistical computing*. Vienna, Austria: R Foundation for Statistical Computing. <https://www.R-project.org/>.
55. Bates D, Maechler M, Bolker B, Walker S. 2015 Fitting linear mixed-effects models using lme4. *J. Stat. Softw.* **67**, 1–48. (doi:10.18637/jss.v067.i01)
56. Fox J, Weisberg S. 2019 *An R companion to applied regression*, 3rd edn. Thousand Oaks, CA: Sage. <https://socialsciences.mcmaster.ca/jfox/Books/Companion/>
57. Wickham H. 2016 *Ggplot2: elegant graphics for data analysis*. New York, NY: Springer-Verlag.
58. Hothorn T, Bretz F, Westfall P. 2008 Simultaneous inference in general parametric models. *Biom. J.* **50**, 346–363. (doi:10.1002/bimj.200810425)
59. Sanders D, Kehoe R, Tiley K, Bennie J, Cruse D, Davies TW, van Veen F, Gaston KJ. 2015 Artificial nighttime light changes aphid-parasitoid population dynamics. *Sci. Rep.* **5**, 15232. (doi:10.1038/srep15232)
60. Bennie J, Davies TW, Inger R, Gaston KJ. 2018 Artificial light at night causes top-down and bottom-up trophic effects on invertebrate populations. *J. Appl. Ecol.* **55**, 2698–2706. (doi:10.1111/1365-2664.13240)
61. Will T, van Bel AJ. 2006 Physical and chemical interactions between aphids and plants. *J. Exp. Bot.* **57**, 729–737. (doi:10.1093/jxb/erj089)
62. Douglas A. 2006 Phloem-sap feeding by animals: problems and solutions. *J. Exp. Bot.* **57**, 747–754. (doi:10.1093/jxb/erj067)
63. Wang XD, Bi WS, Jing G, Yu XM, Wang HY, Liu DQ. 2018 Systemic acquired resistance, NPR1, and pathogenesis-related genes in wheat and barley. *J. Int. Agric.* **17**, 2468–2477. (doi:10.1016/S2095-3119(17)61852-5)
64. Stitt M, Zeeman SC. 2012 Starch turnover: pathways, regulation and role in growth. *Curr. Opin. Plant Biol.* **15**, 282–292. (doi:10.1016/j.pbi.2012.03.016)
65. Kwak MJ *et al.* 2017 Stomatal movements depend on interactions between external night light cue and internal signals activated by rhythmic starch turnover and abscisic acid (ABA) levels at dawn and dusk. *Acta Physiologiae Plantarum* **39**, 1–12. (doi:10.1007/s11738-016-2300-x)
66. Kwak MJ *et al.* 2018 Night light-adaptation strategies for photosynthetic apparatus in yellow-poplar (*Liriodendron tulipifera* L.) exposed to artificial night lighting. *Forests* **9**, 74. (doi:10.3390/f9020074)
67. Baraniya D, Nannipieri P, Kublik S, Vestergaard G, Schlöter M, Schöler A. 2018 The impact of the diurnal cycle on the microbial transcriptome in the rhizosphere of barley. *Microb. Ecol.* **75**, 830–833. (doi:10.1007/s00248-017-1101-0)
68. Alkhedir H, Karlovsky P, Vidal S. 2010 Effect of light intensity on colour morph formation and performance of the grain aphid *Sitobion avenae* F. (Homoptera: Aphididae). *J. Insect Physiol.* **56**, 1999–2005. (doi:10.1016/j.jinsphys.2010.08.025)
69. Beer K, Joschinski J, Sastre AA, Krauss J, Helfrich-Förster C. 2017 A damping circadian clock drives weak oscillations in metabolism and locomotor activity of aphids (*Acyrtosiphon pisum*). *Sci. Rep.* **7**, 1–9. (doi:10.1038/s41598-016-0028-x)
70. Joschinski J, Beer K, Helfrich-Förster C, Krauss J. 2016 Pea aphids (Homoptera: Aphididae) have diurnal rhythms when raised independently of a host plant. *J. Insect Sci.* **16**, 31. (doi:10.1093/jisesa/iew013)
71. Nalam V, Isaacs T, Moh S, Kansman J, Finke D, Albrecht T, Nachappa P. 2021 Diurnal feeding as a potential mechanism of osmoregulation in aphids. *Insect Sci.* **28**, 521–532. (doi:10.1111/1744-7917.12787)
72. Narayandas GK, Alyokhin AV. 2006 Diurnal patterns in host finding by potato aphids, *Macrosiphum euphorbiae* (Homoptera: Aphididae). *J. Insect Behav.* **19**, 347. (doi:10.1007/s10905-006-9029-0)
73. Tjallingii WF. 1978 Electronic recording of penetration behaviour by aphids. *Entomol. Exp. Appl.* **24**, 721–730. (doi:10.1111/j.1570-7458.1978.tb02836.x)
74. Cieraad E, Strange E, Flink M, Schrama M, Spoelstra K. 2022 Artificial light at night affects plant–herbivore interactions. *J. Appl. Ecol.* **60**, 400–410. (doi:10.1111/1365-2664.14336)
75. Aphalo PJ, McLeod A, Heikkilä A, Gómez I, López Figueroa F, Robson MT, Strid Å. 2012 *Beyond the visible: a handbook of best practice in plant UV photobiology*, pp. 35–70. Helsinki, Finland: Helsingfors Universitet.
76. Heinen R *et al.* 2023 Part-night exposure to artificial light at night has more detrimental effects on aphid colonies than fully lit nights. Figshare. (doi:10.6084/m9.figshare.c.6837639)