

SUPPLEMENTARY DATA

Supplementary Figure

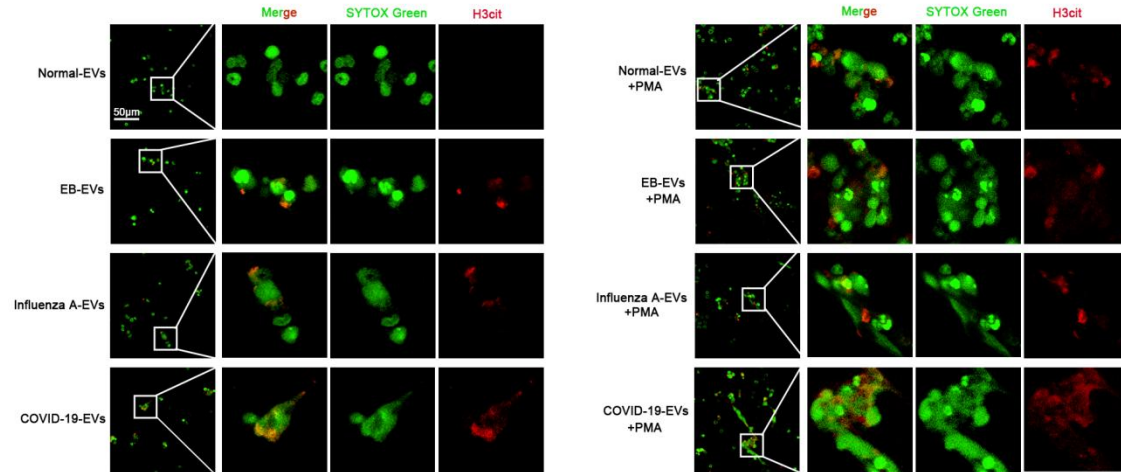


Fig. S1 EVs derived from COVID-19 patients induced the formation of NETs. Neutrophils were treated with Normal-EVs, EB-EVs, Influenza A-EVs, COVID-19-EVs, and phorbol-12-myristate-13-acetate (PMA), and neutrophil extracellular traps (NETs) were detected based on SYTOX Green and H3cit co-localization.