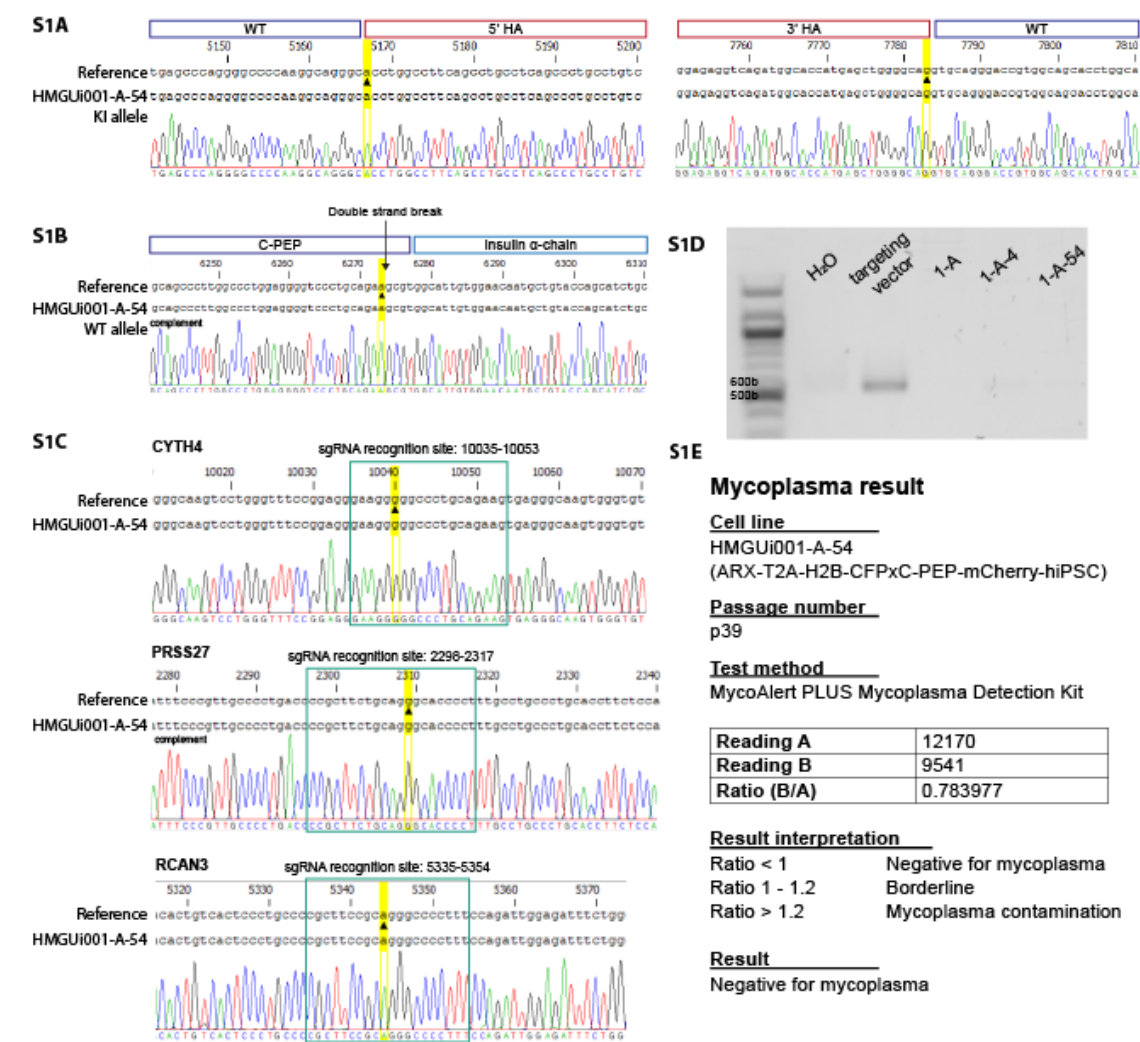


Supp.Fig. 1



Supp.Fig.1. Quality control of ARX-T2A-H2B-CFP x C-PEP-mCherry-hiPSC (HMGUi001-A-54) line. Sequencing of knock in allele (S1A) and wild type allele (S1B) target insertion with correct border region. (S1C) Sequencing of the first three off-target sites. (S1D) Absence of random plasmid integration events were shown through PCR. (S1E) HMGUi001-A-54 was tested negative for mycoplasma contamination.