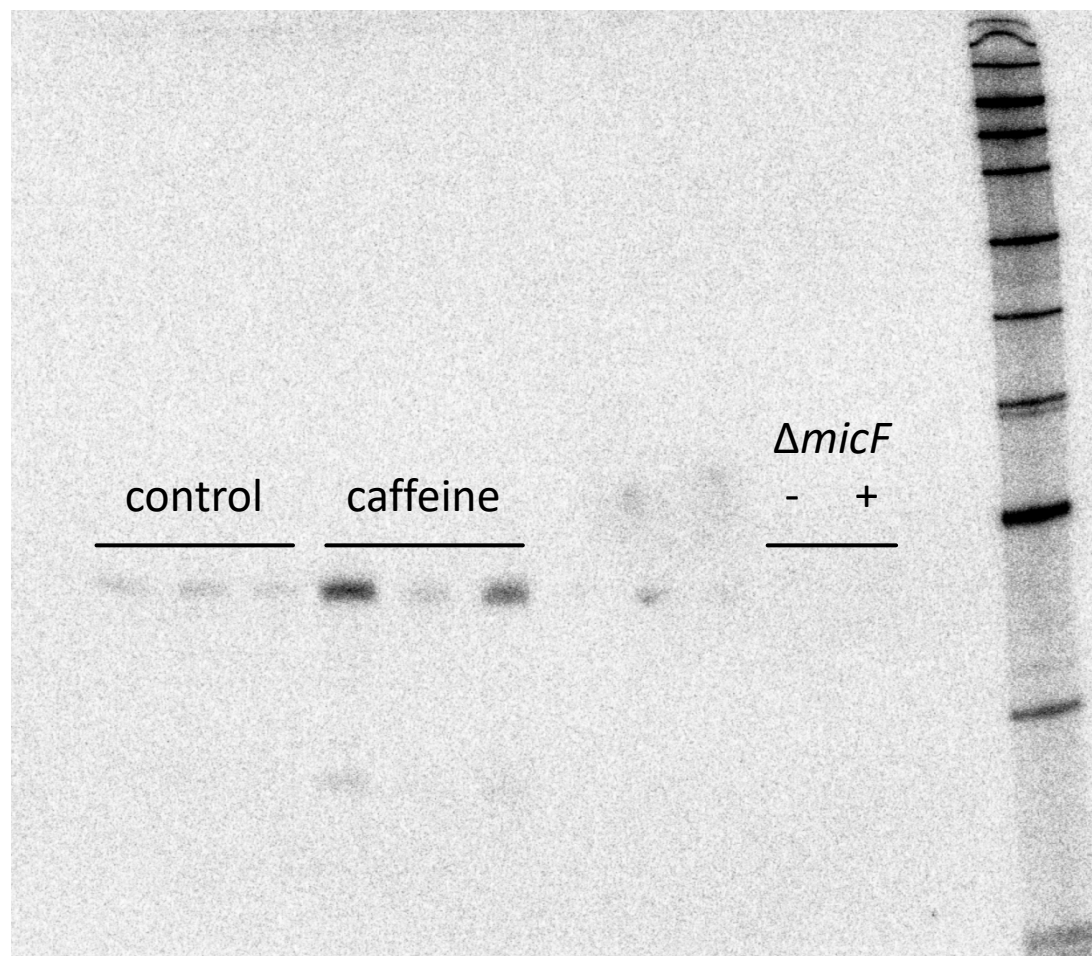


Fig 4a – MicF signal



The gel electrophoresis image displays protein bands across 12 lanes. The lanes are organized into three groups: 'control' (lanes 1-3), 'caffeine' (lanes 4-6), and ' $\Delta micF$ ' (lanes 7-9). The ' $\Delta micF$ ' group is further subdivided into '-' (lanes 7-8) and '+' (lane 9). Lanes 10-12 show additional bands, likely representing molecular weight markers. The bands in the control and caffeine lanes are relatively uniform in intensity, while the bands in the ' $\Delta micF$ ' lanes show some variation, particularly in the '+' condition.

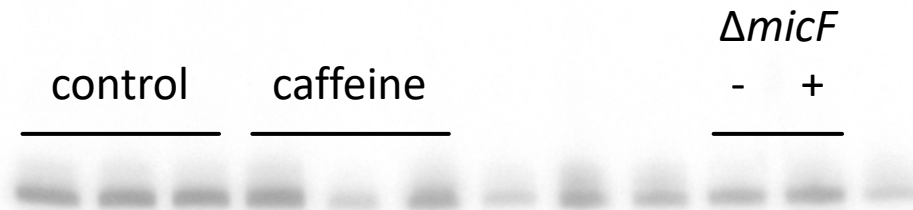


Fig 5a – OmpF signal

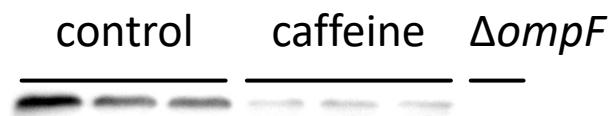


Fig 5a – RecA signal



Fig 6c – OmpF signal

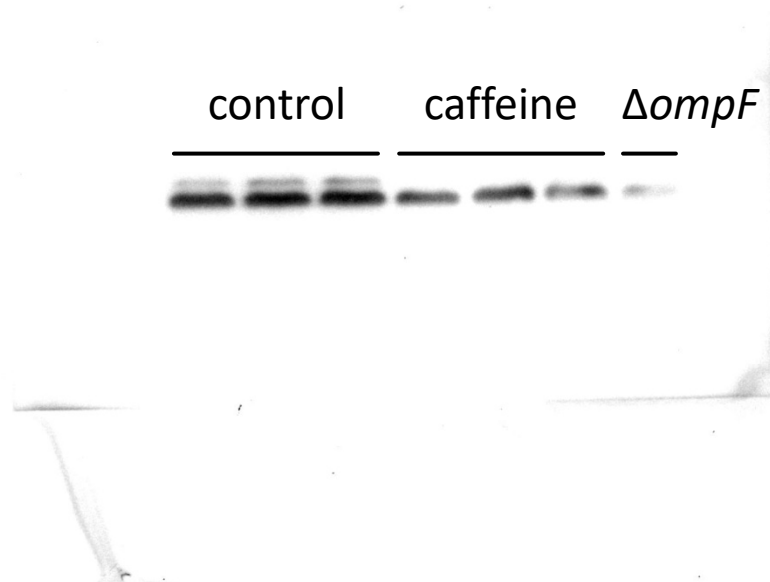


Fig 6c – RecA signal

