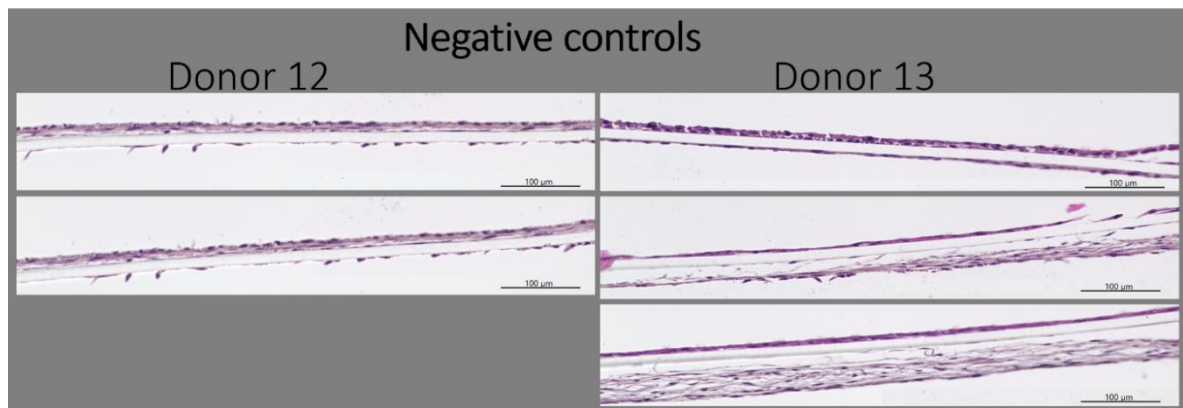


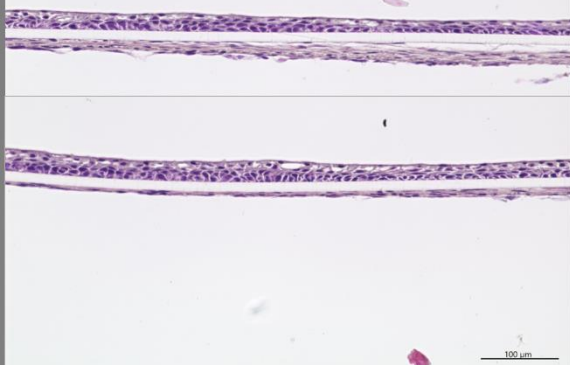
### Supplementary information 3



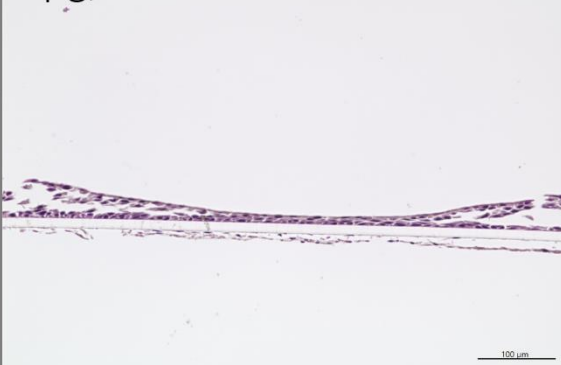
## Donor 11, 2h post exposure

No negative controls

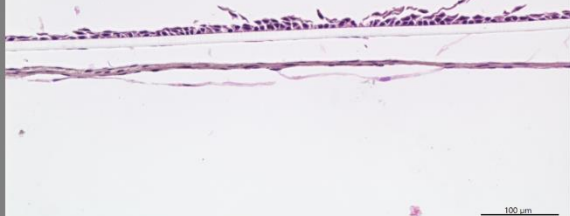
0.1  $\mu\text{g}/\text{cm}^2$



1  $\mu\text{g}/\text{cm}^2$



4  $\mu\text{g}/\text{cm}^2$

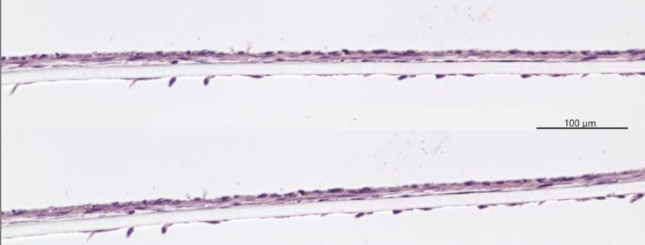


8  $\mu\text{g}/\text{cm}^2$



## Donor 12, 2h post exposure

Negative controls



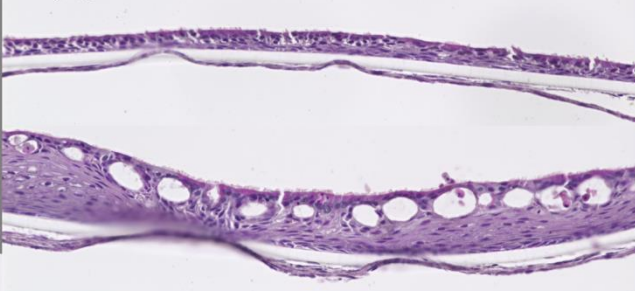
0.1  $\mu\text{g}/\text{cm}^2$



1  $\mu\text{g}/\text{cm}^2$



4  $\mu\text{g}/\text{cm}^2$

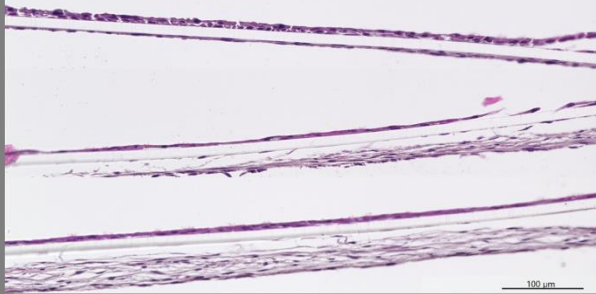


8  $\mu\text{g}/\text{cm}^2$



### Donor 13, 2h post exposure

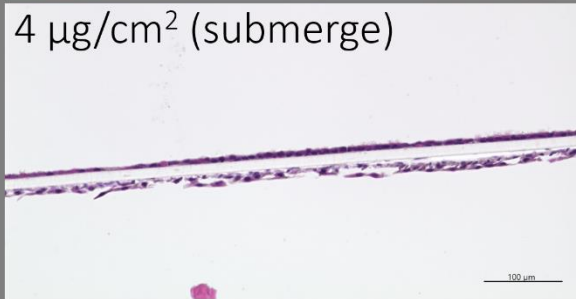
Negative controls



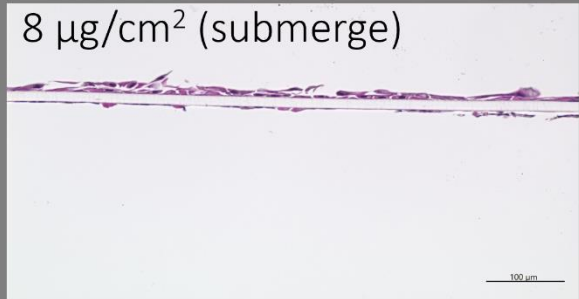
1  $\mu\text{g}/\text{cm}^2$



4  $\mu\text{g}/\text{cm}^2$  (submerge)



8  $\mu\text{g}/\text{cm}^2$  (submerge)



*Figure S13: HE-Stained slides of control and CB-exposed cells as indicated by the respective concentrations used. For Donor 13 in the lowest panel, the two highest concentrations were performed not with the nebulizer, but submerged in 100μl apical cell culture medium containing CB.*