

Supplementary information 6

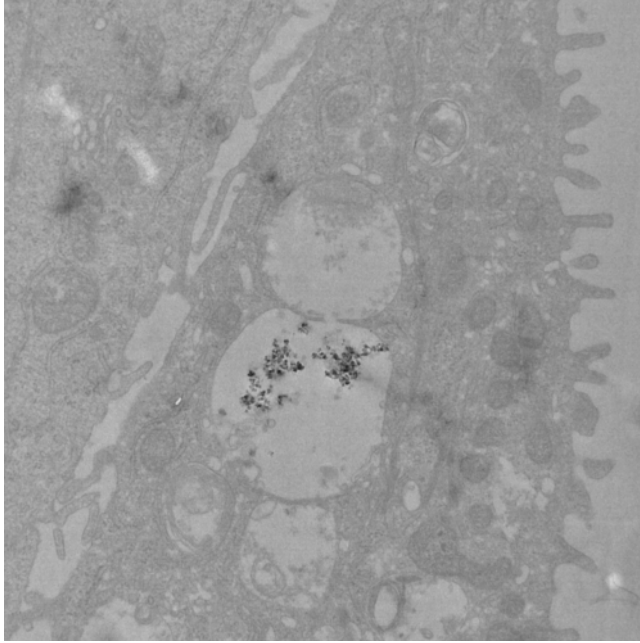


Figure S16: Transmission electron micrograph of mucosa model after exposure to CB. 100ug/cm² was applied in submerged cultures to maximize chances of particle uptake. Here, the sample is uncontrasted (no uranyl acetate added) to demonstrate that apparent particles are not a contrasting artifact and can clearly be seen as intensely black/dark structures above the “carbon signal” from biological tissue/structures.