

Impaired mitochondrial ketone body oxidation in insulin resistant states

Elric Zweck^{1,2,3,4,*}, Sarah Piel^{3,4,*}, Johannes W. Schmidt^{3,4}, Daniel Scheiber^{1,2,3,4}, Martin Schön^{1,2,5}, Sabine Kahl^{1,2,5}, Volker Burkart^{1,2}, Bedair Dewidar^{1,2}, Ricarda Remus^{3,4}, Alexandra Chadt^{2,6}, Hadi Al-Hasani^{2,6}, Lucia Mastrototaro^{1,2}, Hug Aubin^{4,7}, Udo Boeken⁷, Artur Lichtenberg^{4,7}, Jörg Distler⁸, Amin Polzin^{3,4}, Malte Kelm^{3,4}, Ralf Westenfeld^{3,4}, Robert Wagner^{1,2,5}, Patrick Schrauwen^{1,2}, Julia Szendroedi^{1,2,9,10}, Michael Roden^{1,2,5,§}, Cesare Granata^{1,2,§,§}

¹Institute for Clinical Diabetology, German Diabetes Center, Leibniz Center for Diabetes Research, Heinrich-Heine-University Düsseldorf, Düsseldorf, Germany

²German Center for Diabetes Research (DZD e.V.), Partner Düsseldorf, Munich-Neuherberg, Germany

³Department of Cardiology, Pulmonology, and Vascular Medicine, Medical Faculty, Heinrich-Heine-University Düsseldorf, Düsseldorf, Germany

⁴CARID, Cardiovascular Research Institute Düsseldorf, Medical Faculty, Heinrich-Heine-University Düsseldorf, Düsseldorf, Germany

⁵Department of Endocrinology and Diabetology, Medical Faculty, Heinrich-Heine-University Düsseldorf, Düsseldorf, Germany

⁶Institute for Clinical Biochemistry and Pathobiochemistry, German Diabetes Center, Leibniz Center for Diabetes Research at Heinrich-Heine-University Düsseldorf, Düsseldorf, Germany

⁷Department of Cardiac Surgery, Medical Faculty, Heinrich-Heine-University Düsseldorf, Düsseldorf, Germany

⁸Department of Rheumatology and Hiller Research Institute, Medical Faculty, Heinrich-Heine-University Düsseldorf, Düsseldorf, Germany

⁹Department of Internal Medicine I and Clinical Chemistry, University Hospital Heidelberg, Heidelberg, Germany

¹⁰Institute for Diabetes and Cancer (IDC) and Joint Heidelberg-IDC Translational Diabetes Program, Helmholtz Center Munich, Neuherberg, Germany

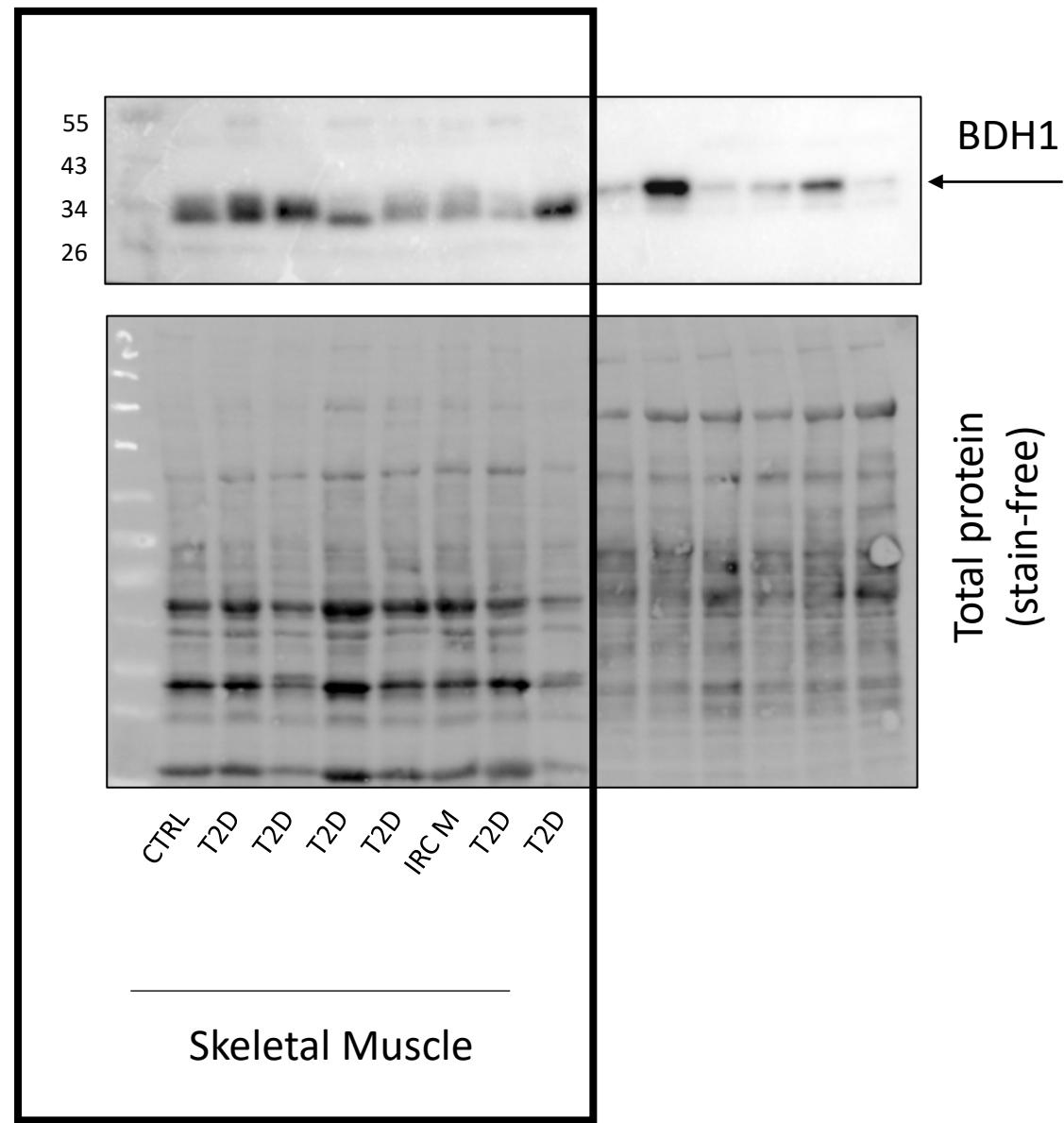
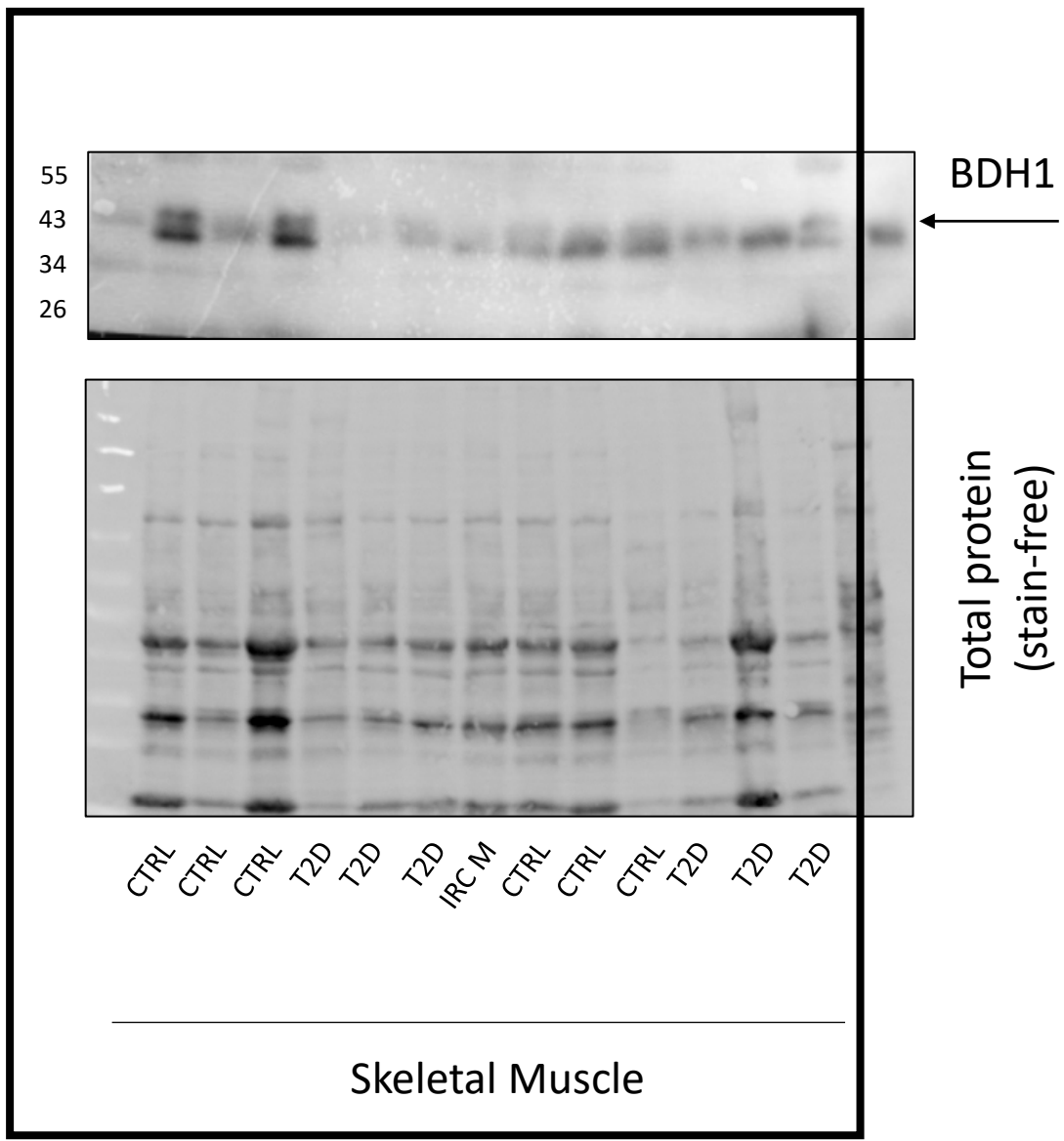
*These authors contributed equally

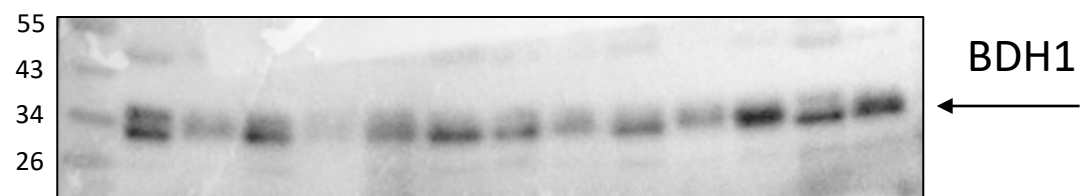
[§]These authors contributed equally

[§]Lead contact for correspondence:

Cesare Granata, PhD
Institute for Clinical Diabetology
German Diabetes Center
Auf'm Hennekamp 65
40225 Düsseldorf
Germany
E-mail: Cesare.Granata@ddz.de
Tel.: +49 211 3382 229

Human Skeletal Muscle

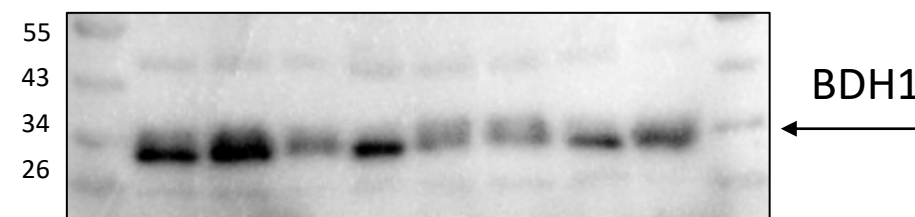




Total protein
(stain-free)

CTRL CTRL CTRL T2D T2D T2D IRC M CTRL CTRL CTRL T2D T2D T2D

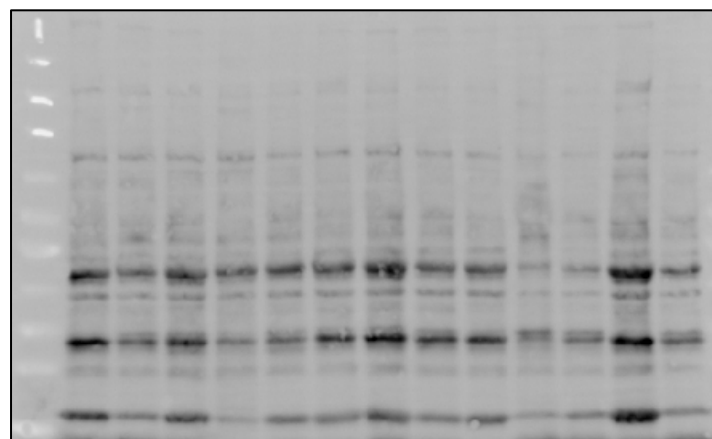
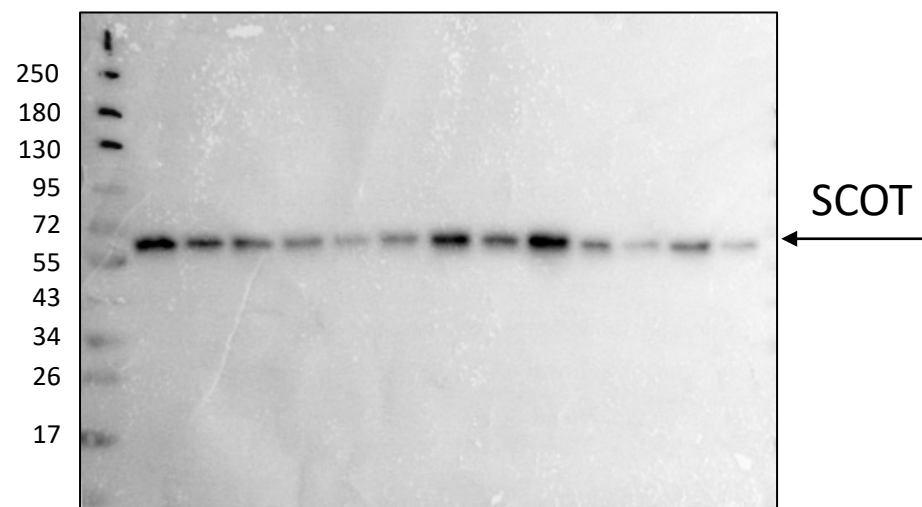
Skeletal Muscle



Total protein
(stain-free)

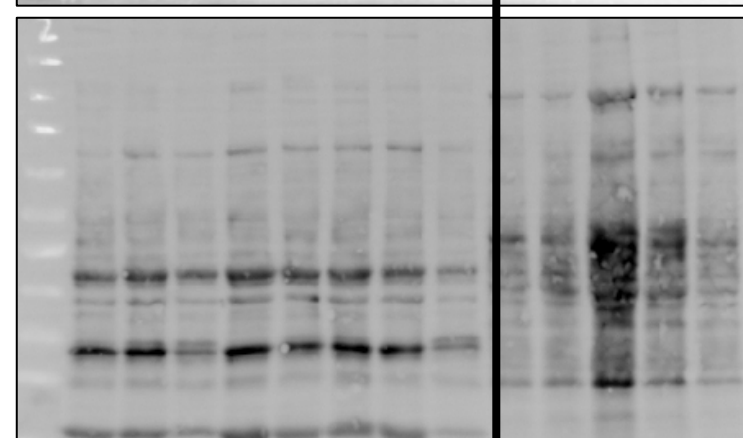
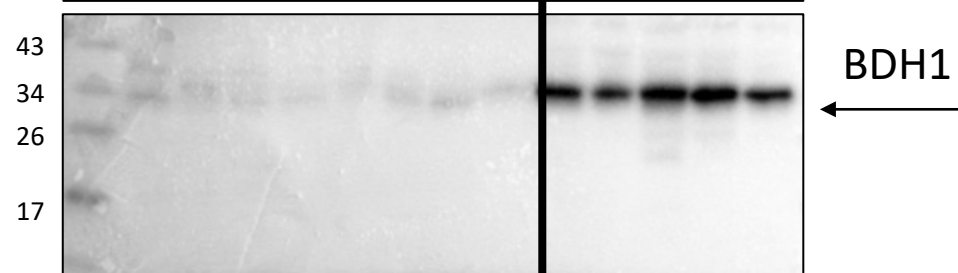
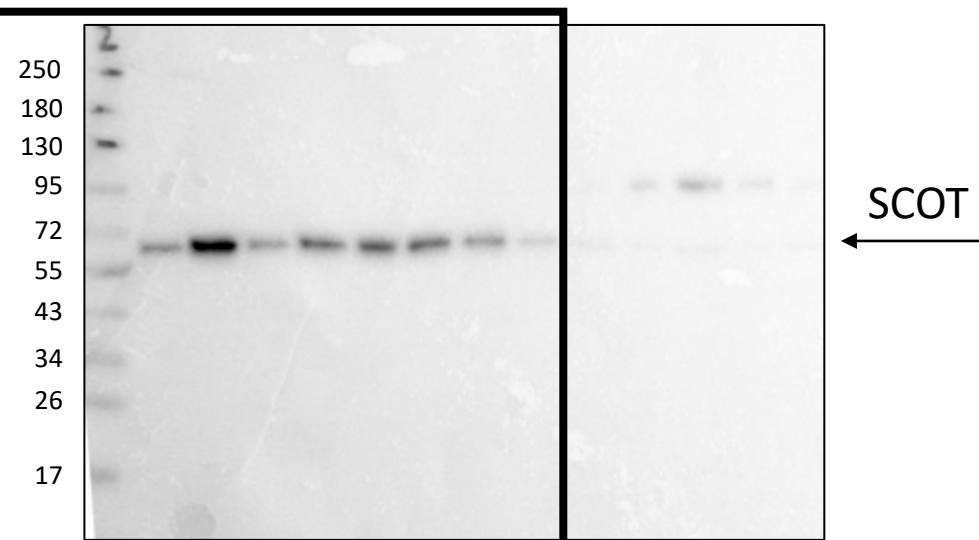
CTRL T2D T2D T2D T2D IRC M T2D T2D

Skeletal Muscle



CTRL CTRL CTRL T2D T2D T2D IRC M CTRL CTRL CTRL T2D T2D T2D

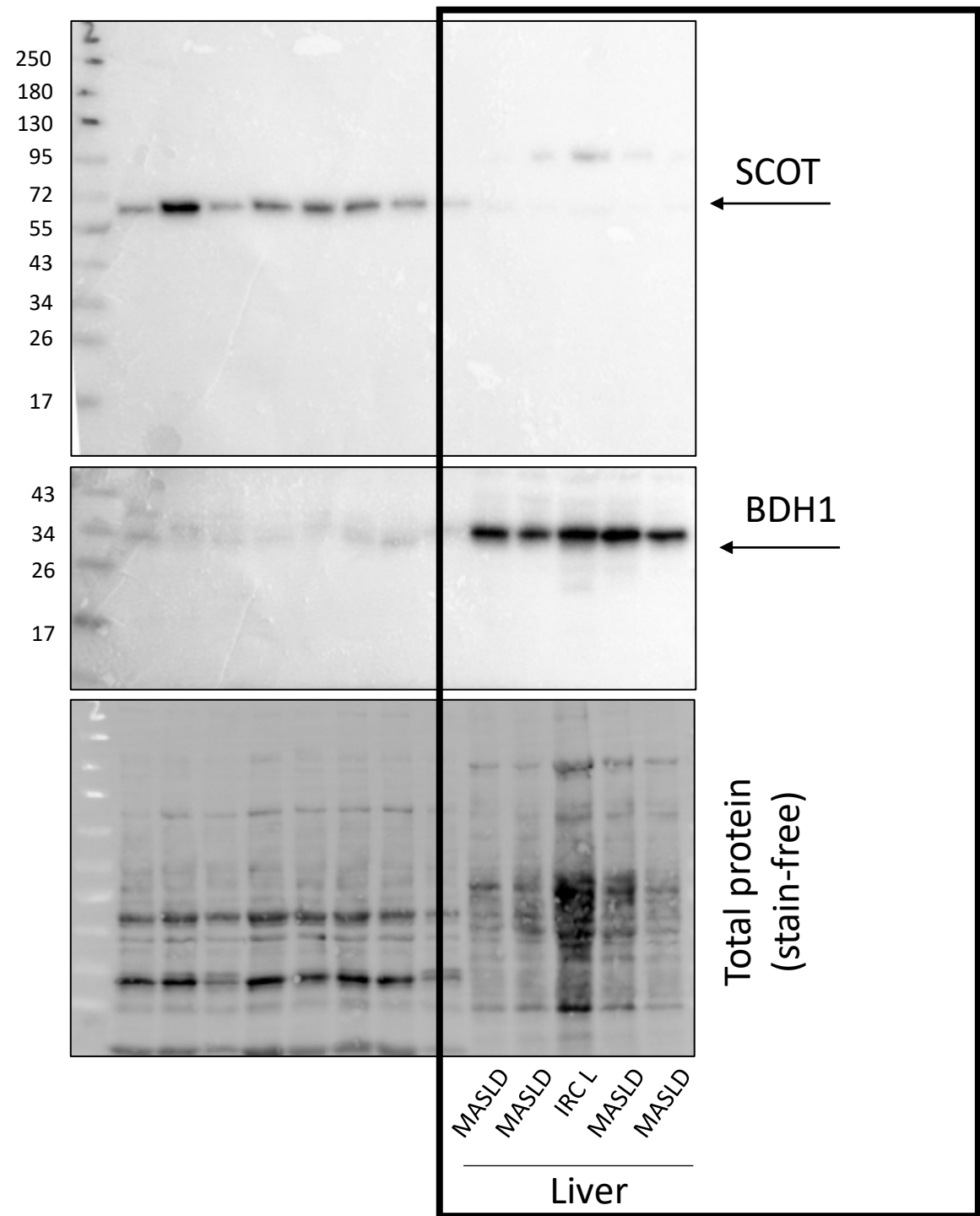
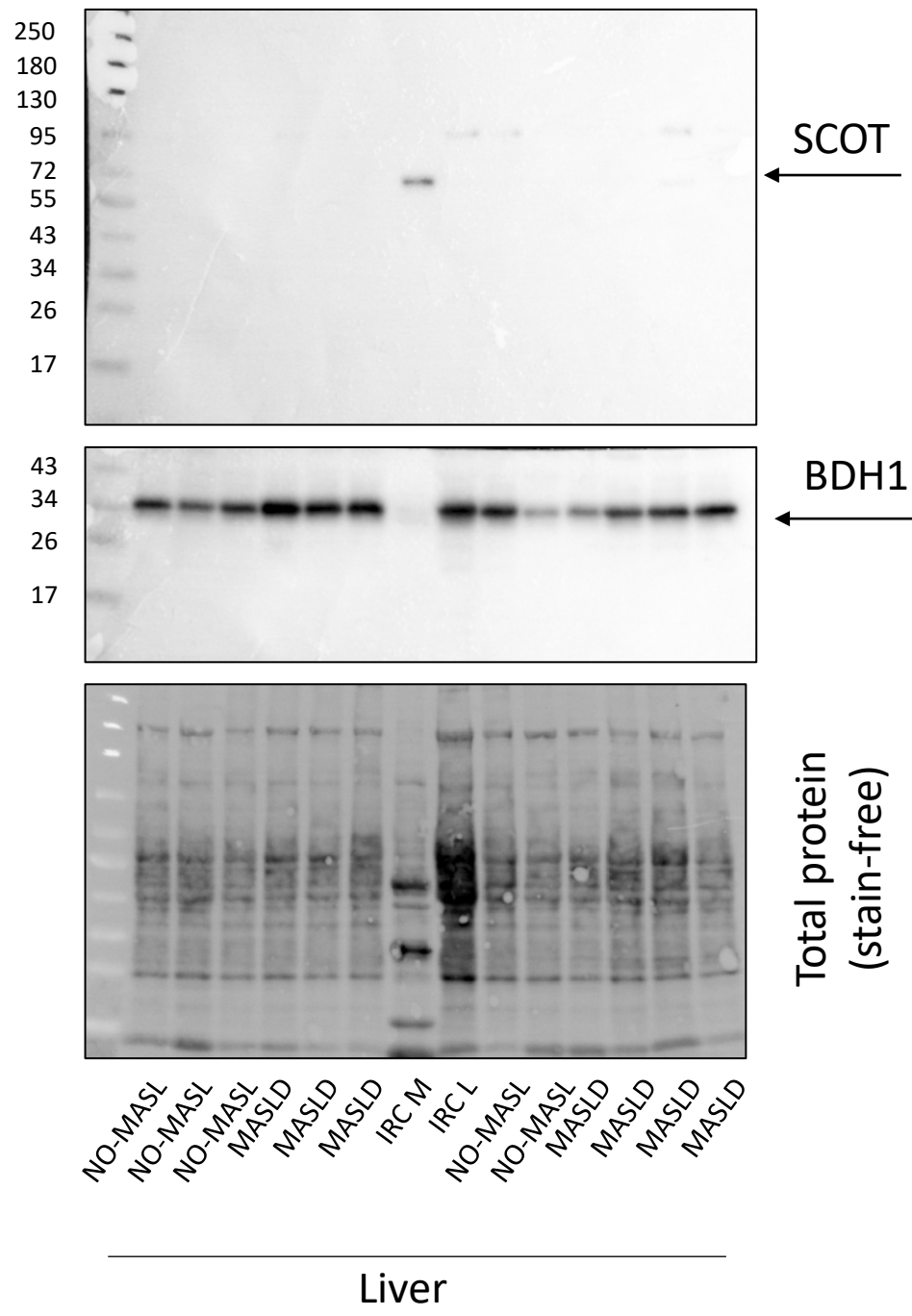
Skeletal Muscle



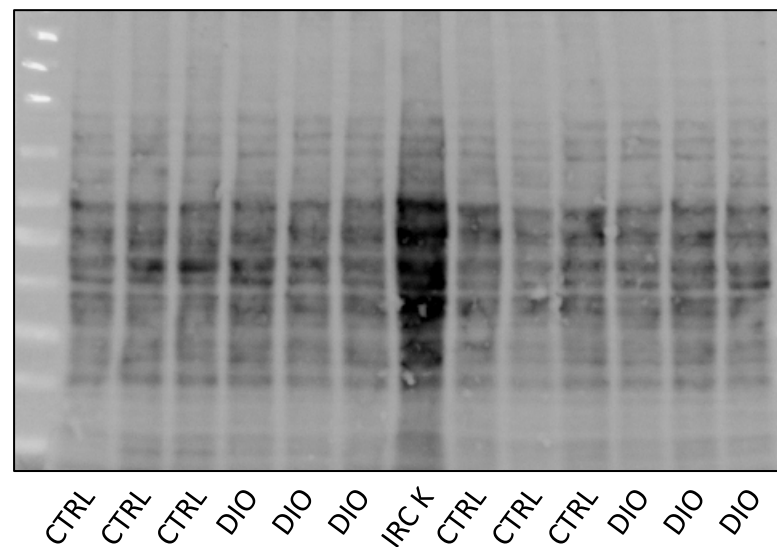
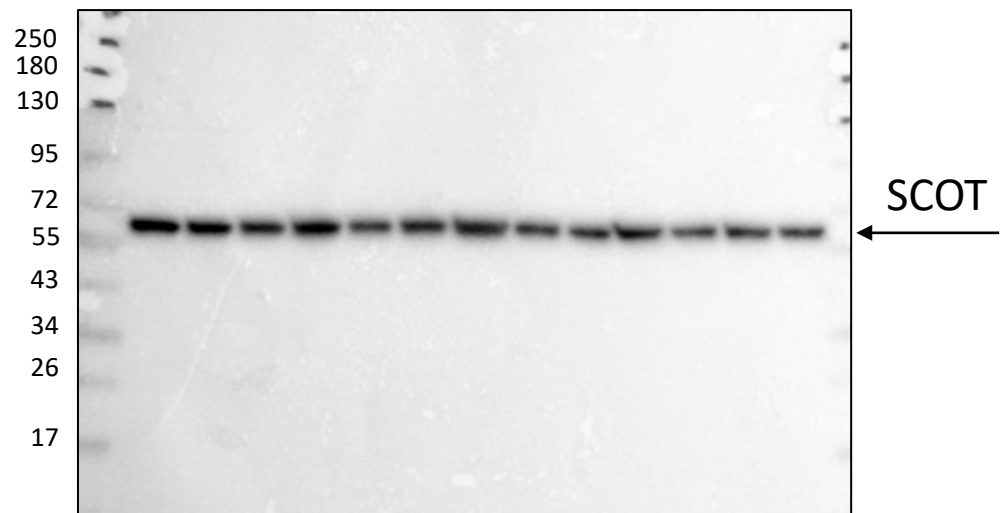
CTRL T2D T2D T2D T2D IRC M T2D T2D

Skeletal Muscle

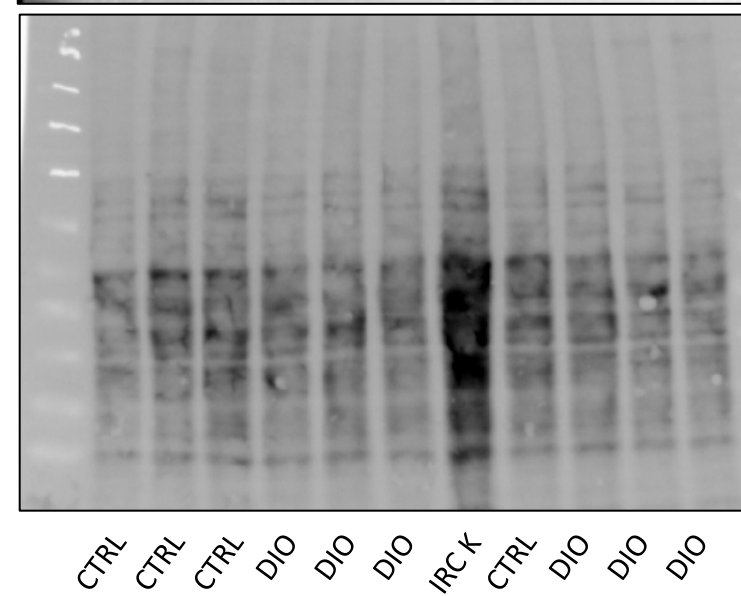
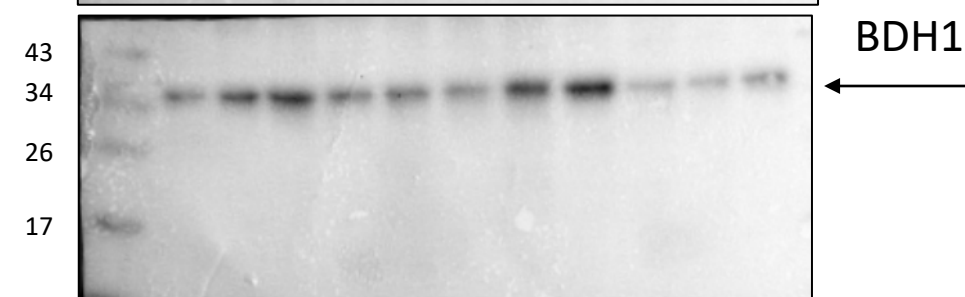
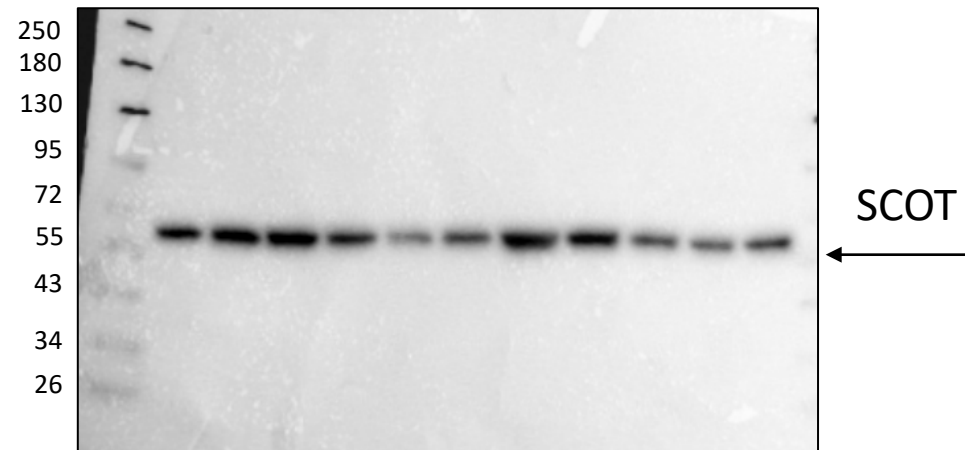
Human Liver



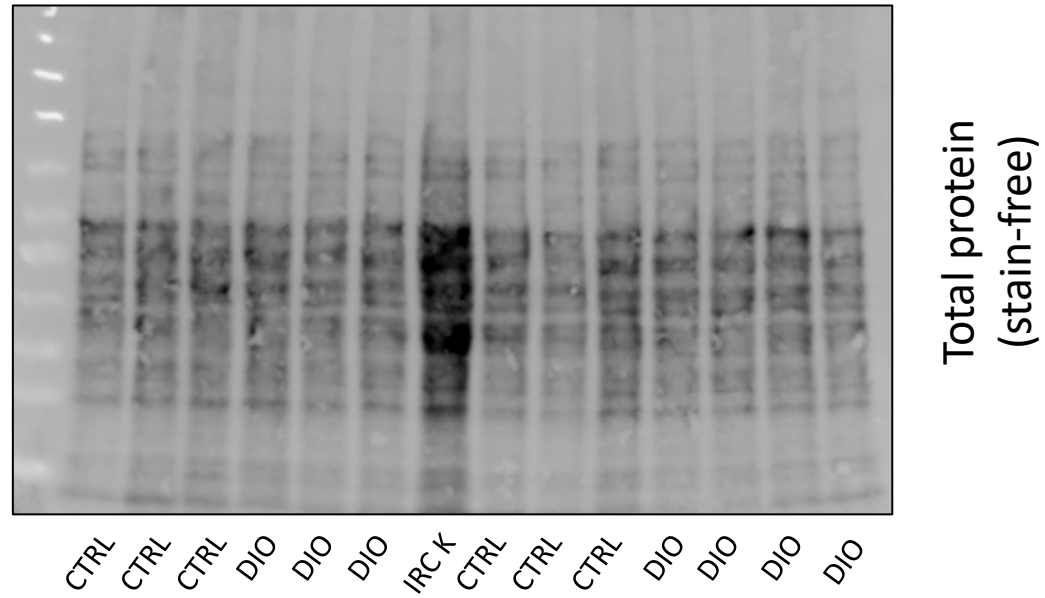
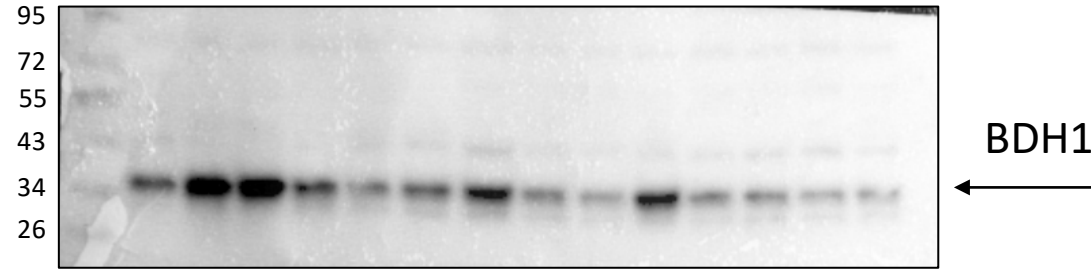
Murine Kidney



Kidney



Kidney



Kidney