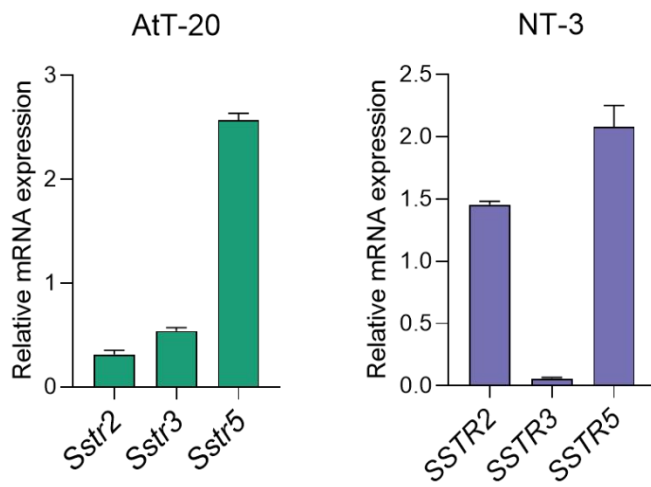
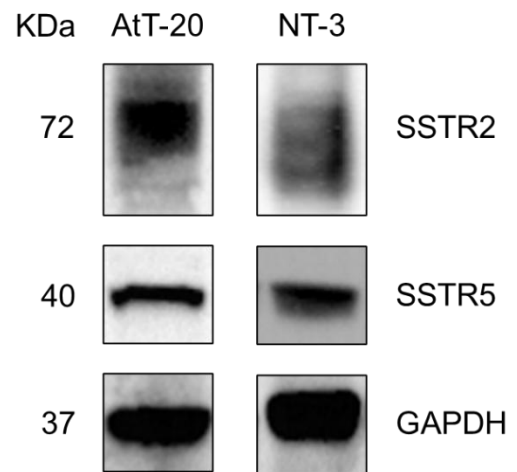
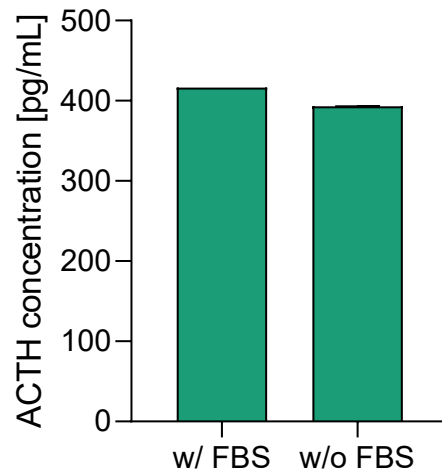


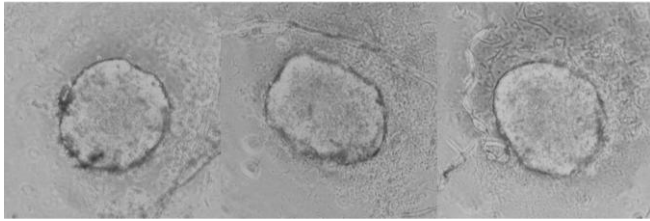
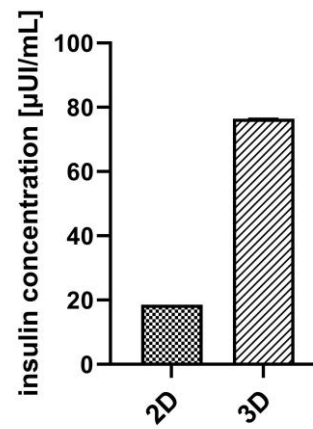
## **SUPPLEMENTARY FIGURES**

**A****B**

**Supplementary Figure 1.** Validation of AtT-20 and NT-3 cells as experimental model. (A) RealTime RT-PCR for *SSTR2*, *SSTR3* and *SSTR5*. (B) Western blotting using anti-SSTR2 and anti-SSTR5 antibodies. GAPDH was used as reference control.



**Supplementary Figure 2.** Validation of ACTH secretion of AtT-20 cells in 2D. 3500 cells were plated in the presence or absence of FBS and ACTH secretion was assessed 72h later using a specific ELISA kit.

**A****B** NT-3

**Supplementary Figure 3.** NT-3 cells grown as 3D organotypic cultures. (A) Representative pictures of NT-3 cells grown in ULA plates for 14 days. (B) Insulin levels in the supernatant of NT-3 cells grown in 2D or in 3D. NT-3 cells were plated in regular plates (2D culture) or in ULA plates (3D spheroids). The supernatant was collected 5 days after plating for 2D cultures, or 5 days after 3D spheroid formation. Insulin levels were quantified in duplicate using an ELISA kit (Elabscience), following the manufacturer's protocol