

Supplementary Information

Obesity-related coagulation activation in adolescents and children: a systematic review and meta-analysis

Julia Buchold^{1#}, Hans-Jonas Meyer^{2#}, Manuel Florian Struck³, Shrey Kohli¹, Akash Mathew¹, Gyulten Mangova¹, Alexey Surov⁴, Matthias Blüher^{5,6,7,8}, Berend Isermann^{1,8#}, Silke Zimmermann^{1*#}

¹Institute of Laboratory Medicine, Clinical Chemistry and Molecular Diagnostics, University of Leipzig, Leipzig, Germany

²Department of Diagnostic and Interventional Radiology, University of Leipzig, Leipzig, Germany

³Department of Anesthesiology and Intensive Care Medicine, University of Leipzig, Leipzig, Germany

⁴Department of Radiology, Neuroradiology and Nuclear Medicine, Johannes Wesling University Hospital, Ruhr University, Bochum, Germany

⁵Helmholtz Institute for Metabolic Obesity and Vascular Research (HI-MAG) of the Helmholtz Zentrum München at the University of Leipzig and University Hospital Leipzig, Leipzig, Germany

⁶Medical Department III - Endocrinology, Nephrology, and Rheumatology, Leipzig University Medical Center, Leipzig, Germany

⁷German Center for Child and Adolescent Health (DZKJ), Leipzig/Dresden partner site, Leipzig, Germany

⁸LeiCeM - Leipzig Center of Metabolism, Leipzig University, Leipzig, Germany

#Shared authorship

*Correspondence: silke.zimmermann@medizin.uni-leipzig.de

Dr. Dr. Silke Zimmermann

Paul-List-Str. 13/15

04103 Leipzig, Germany

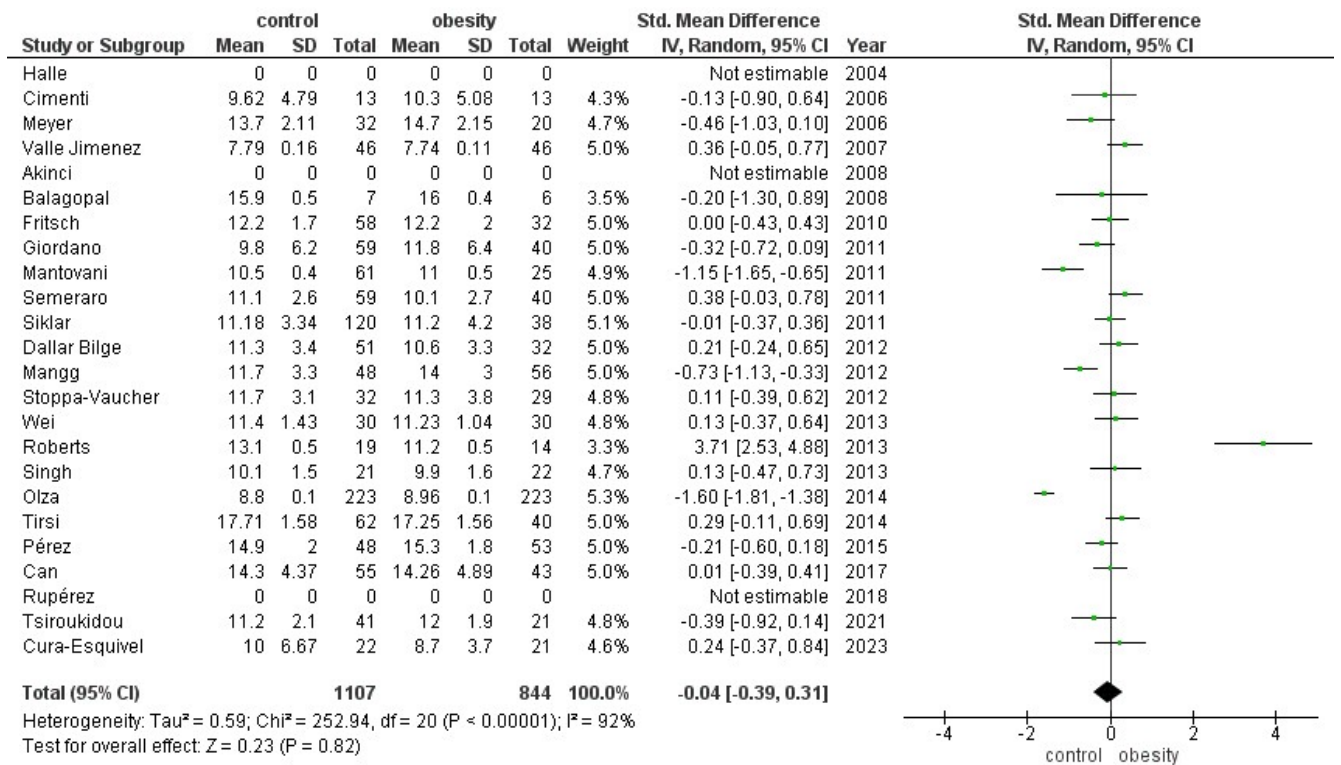


Fig. S1. Forest plot of Std. Mean difference of age of children among studies. Due to non-availability of respective SD in three studies, those could not be included here (Halle, Akinci, Rupérez).

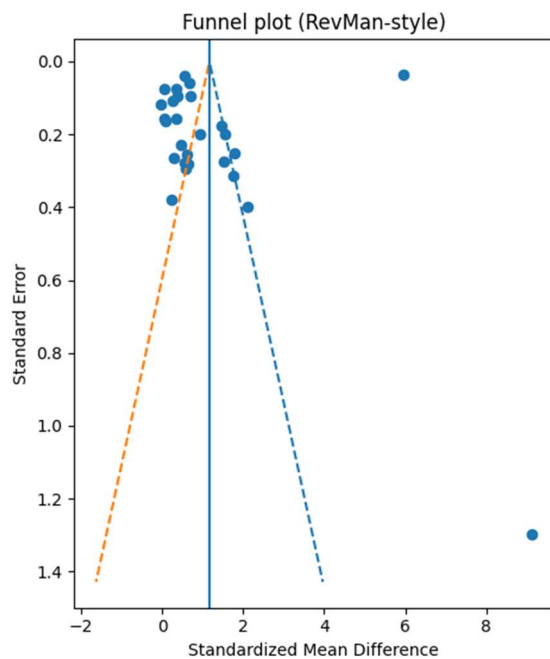


Fig. S2. Funnel plot assessing publication bias for fibrinogen in adults for the included studies. The vertical line represents the pooled effect estimate, and dashed lines indicate the pseudo 95% confidence limits.

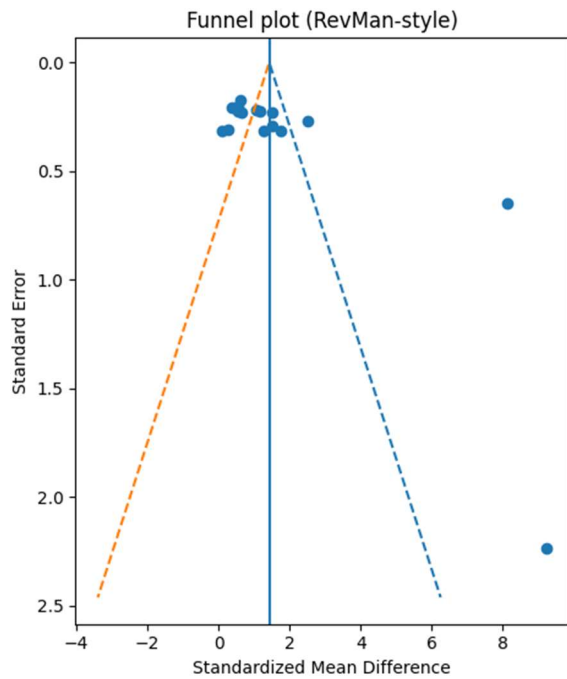


Fig. S3. Funnel plot assessing publication bias for fibrinogen in children for the included studies. The vertical line represents the pooled effect estimate, and dashed lines indicate the pseudo 95% confidence limits.

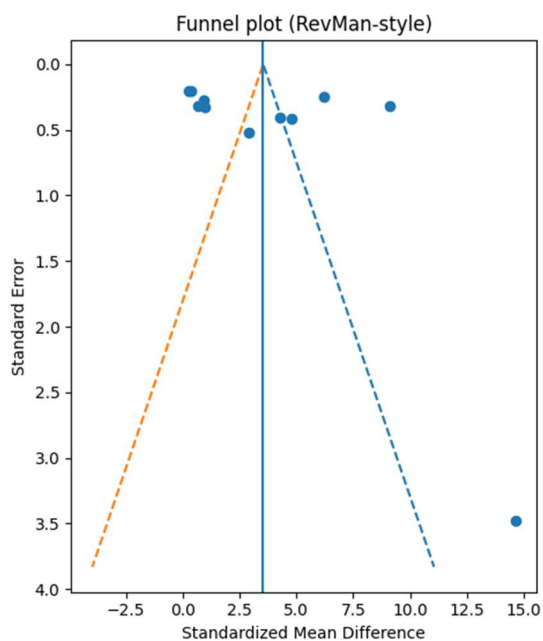


Fig. S4. Funnel plot assessing publication bias for PAI-1 in children for the included studies. The vertical line represents the pooled effect estimate, and dashed lines indicate the pseudo 95% confidence limits.

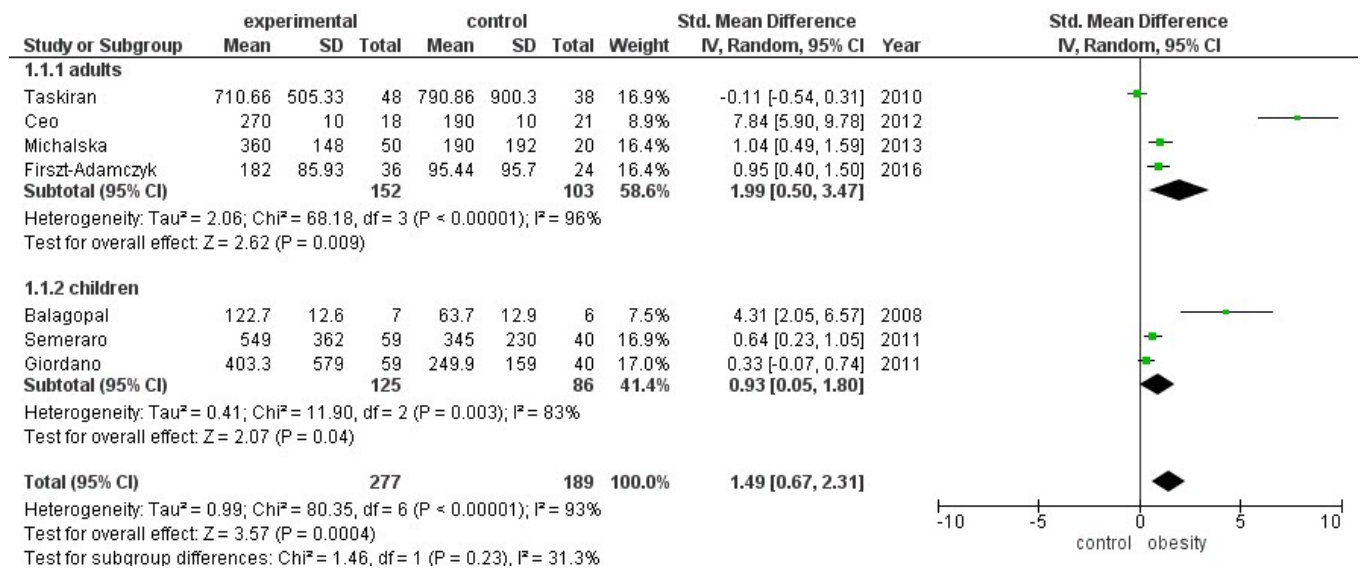


Fig. S5. Sensitivity analysis of D-dimer: Forest plot of the meta-analysis of standardized mean difference of D-dimer by study group (obesity vs. control group). CI: confidence interval, df: degrees of freedom, SD: standard deviation

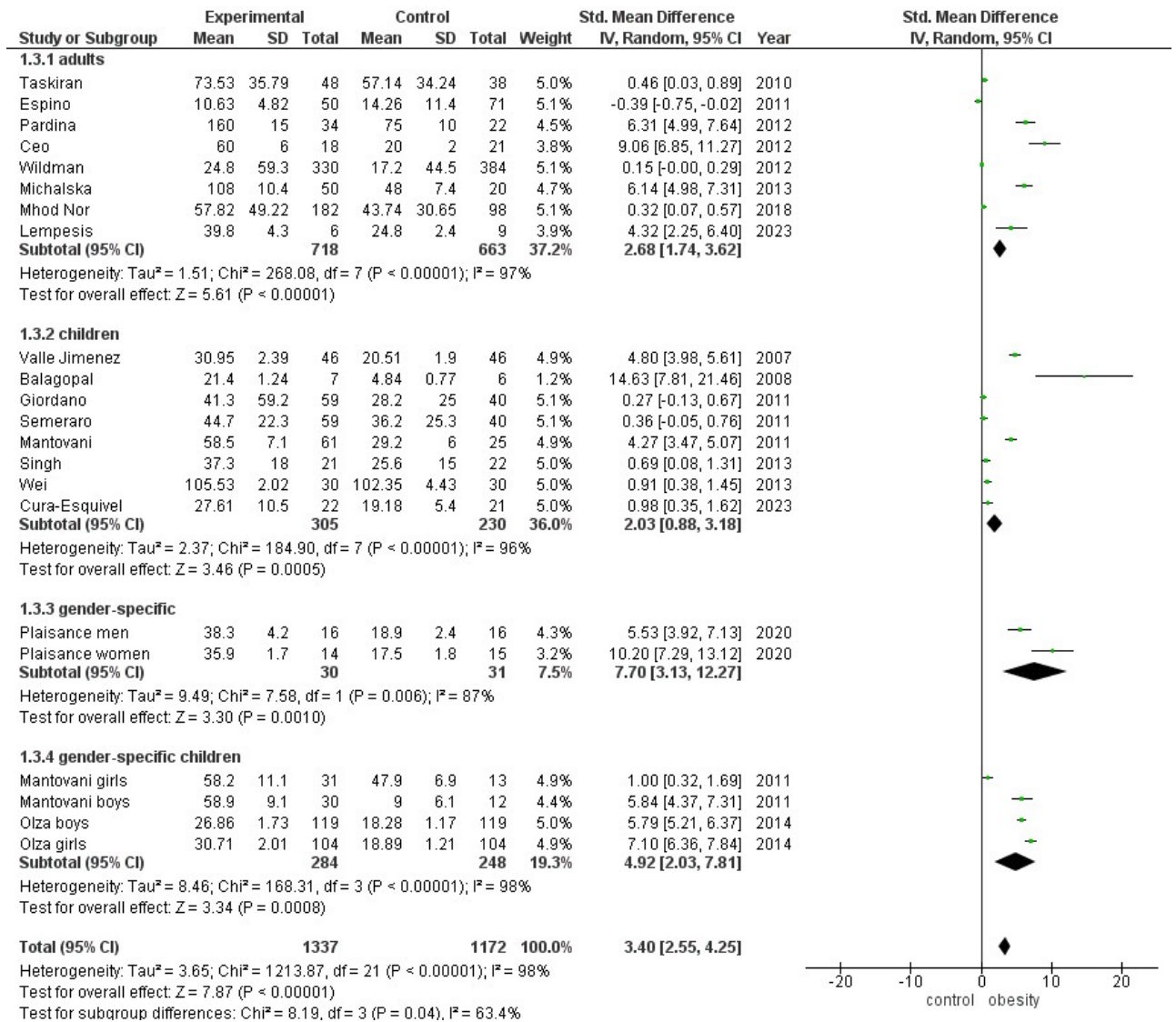


Fig. S6. Sensitivity analysis of PAI-1: Forest plot of the meta-analysis of standardized mean difference of PAI-1 by study group (obesity vs. control group). CI: confidence interval, df: degrees of freedom, SD: standard deviation

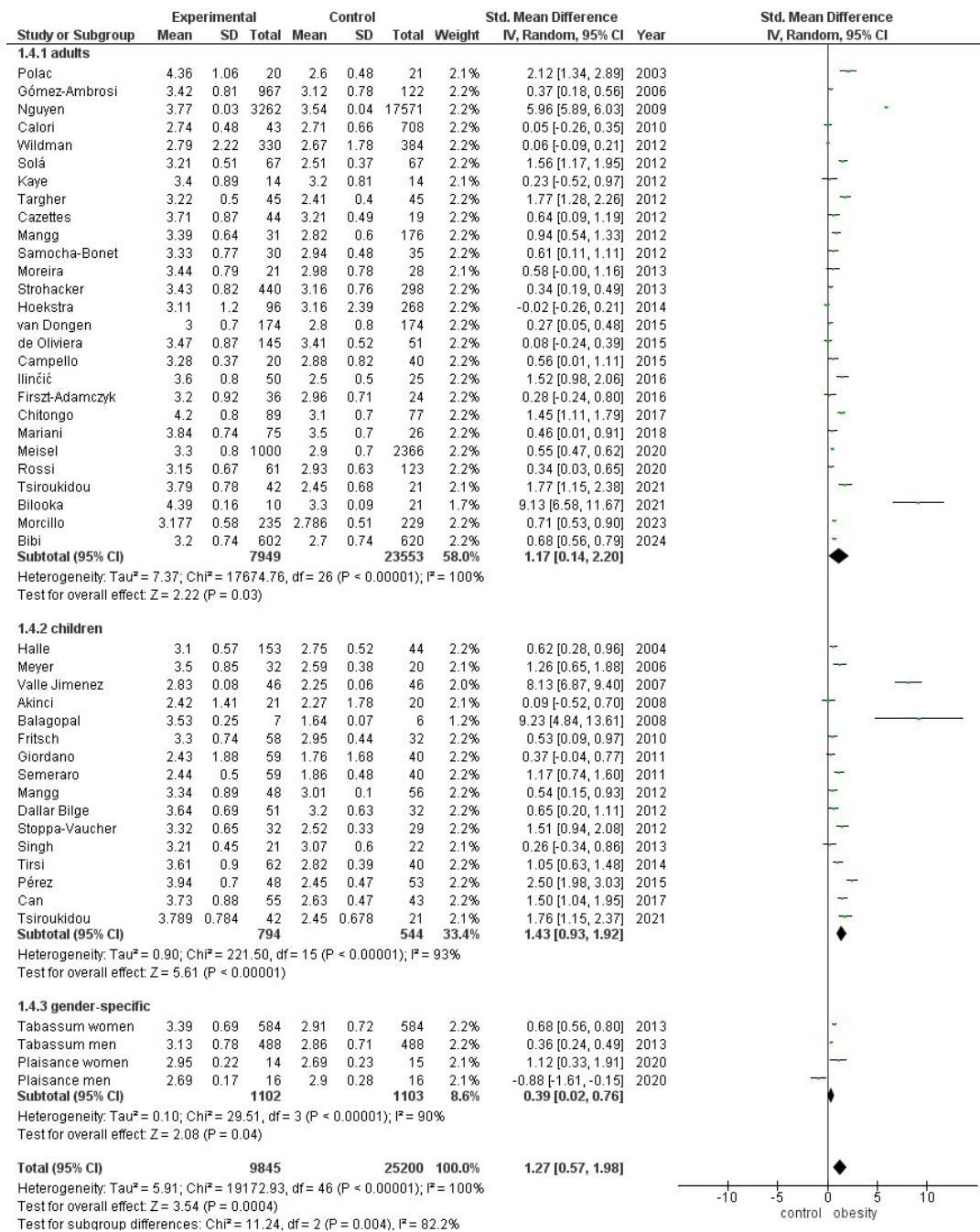


Fig. S7. Sensitivity analysis of fibrinogen: Forest plot of the meta-analysis of standardized mean difference of fibrinogen by study group (obesity vs. control group). CI: confidence interval, df: degrees of freedom, SD: standard deviation

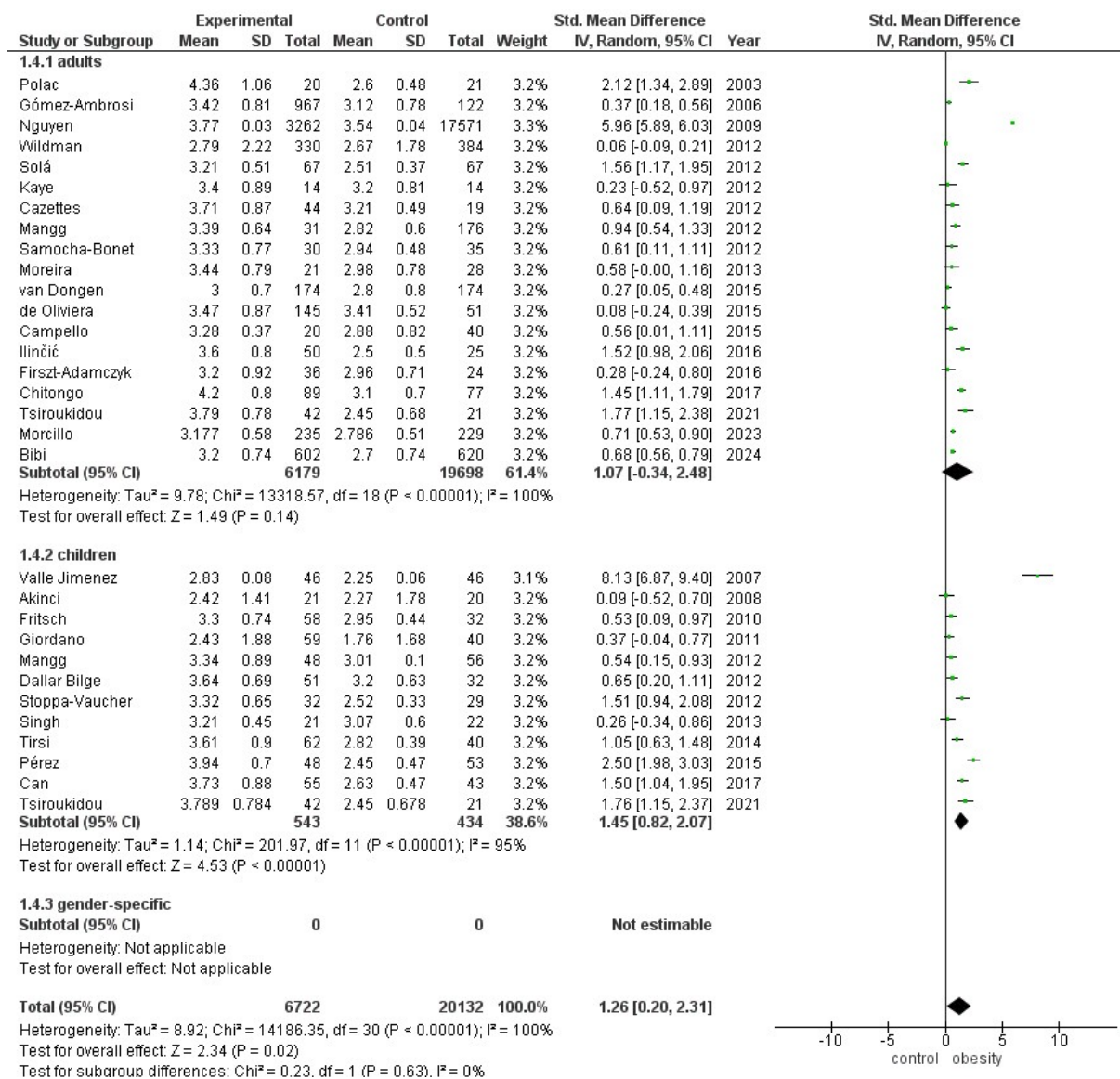


Fig. S8. Sensitivity analysis of fibrinogen after n.a. removal: Forest plot of the meta-analysis of standardized mean difference of fibrinogen by study group (obesity vs. control group). CI: confidence interval, df: degrees of freedom, SD: standard deviation

Table S1

Parameter	First Author	Year	Assay
D-Dimer	Michalska	2013	ELISA
D-Dimer	Morcillo	2023	Particle-enhanced immunoturbidimetric assay (PETIA)
D-Dimer	Semeraro	2011	ELISA
D-Dimer	Balagopal	2008	ELISA
D-Dimer	Ceo	2012	ELISA
D-Dimer	Firszt-Adamczyk	2016	ELISA
D-Dimer	Giordano	2011	ELISA
D-Dimer	Stoppa-Vaucher	2012	ELFA (Enzyme-Linked Fluorescent Assay)
D-Dimer	Taskiran	2010	ELISA
Fibrinogen	Balagopal	2008	Nephelometry
Fibrinogen	Bibi	2024	Claus
Fibrinogen	Bilooka	2021	n.a.
Fibrinogen	Campello	2014	Claus
Fibrinogen	Can	2017	Claus/derived
Fibrinogen	Chitongo	2017	Claus
Fibrinogen	Dallar Bilge	2012	Claus/derived
Fibrinogen	Ilinčić	2016	Claus/derived
Fibrinogen	Mariani	2018	n.a.
Fibrinogen	Nguyen	2009	Claus
Fibrinogen	Oliveira	2015	Claus/derived
Fibrinogen	Rossi	2020	n.a.
Fibrinogen	Samocha-Bonet	2012	Claus
Fibrinogen	Stoppa-Vaucher	2012	Claus/derived
Fibrinogen	Tabassum	2013	n.a.
Fibrinogen	van Dongen	2015	Claus
Fibrinogen	Akinci	2008	Claus
Fibrinogen	Calori	2010	n.a.
Fibrinogen	Cazettes	2012	Claus
Fibrinogen	Firszt-Adamczyk	2016	Claus
Fibrinogen	Fritsch	2010	Claus
Fibrinogen	Giordano	2011	Claus
Fibrinogen	Gómez-Ambrosi	2006	Claus
Fibrinogen	Halle	2004	n.a.
Fibrinogen	Hoekstra	2014	n.a.
Fibrinogen	Kaye	2012	Claus/derived
Fibrinogen	Mangg	2012	Claus
Fibrinogen	Meisel	2020	n.a.
Fibrinogen	Meyer	2006	n.a.
Fibrinogen	Morcillo	2023	Claus
Fibrinogen	Moreira	2013	Claus
Fibrinogen	Murakami	2007	n.a.
Fibrinogen	Pérez	2015	Immunoassay
Fibrinogen	Plaisance	2020	n.a.
Fibrinogen	Polac	2003	Claus
Fibrinogen	Semeraro	2011	n.a.

Fibrinogen	Singh	2013	Claus/derived
Fibrinogen	Solá	2012	Claus/derived
Fibrinogen	Strohacker	2013	Nephelometry
Fibrinogen	Targher	2012	Nephelometry
Fibrinogen	Tirsi	2014	Claus
Fibrinogen	Tsiroukidou	2021	Claus
Fibrinogen	Valle Jimenez	2007	Claus/derived
Fibrinogen	Wildman	2012	Claus/derived
PAI-1	Lempesis	2023	ELISA
PAI-1	Michalska	2013	ELISA
PAI-1	Mohd Nor	2018	ELISA
PAI-1	Rupérez	2018	n.a.
PAI-1	Semeraro	2011	ELISA
PAI-1	Singh	2013	ELISA
PAI-1	Wildman	2012	ELISA
PAI-1	Balagopal	2008	ELISA
PAI-1	Ceo	2012	ELISA
PAI-1	Cura–Esquivel	2023	ELISA
PAI-1	Espino	2011	ELISA
PAI-1	Mantovani	2011	ELISA
PAI-1	de Oliveira	2015	Bead-based multiplex sandwich immunoassay
PAI-1	Olza	2014	Particle-enhanced turbidimetric immunoassay
PAI-1	Pardina	2012	ELISA
PAI-1	Plaisance	2020	n.a.
PAI-1	Roberts	2013	bead-based multiplex sandwich immunoassay
PAI-1	Wei	2013	ELISA
PAI-1	Taskiran	2010	ELISA
PAI-1	Giordano	2011	ELISA
PAI-1	Olza	2012	Bead-based multiplex sandwich immunoassay
PAI-1	Valle Jimenez	2007	Immunoassay
vWF	Villalpando Sánchez	2022	ELISA
vWF	Patel	2016	ELISA
vWF	Singh	2013	ELISA
FVIII	Kaye	2012	Clotting
FVIII	Campello	2014	Clotting
FVIII	Dallar Bilge	2012	Clotting
FVIII	Morcillo	2023	Clotting
ETP	Campello	2014	CAT (Calibrated Automated Thrombogram)
ETP	Chitongo	2017	CAT
ETP	Fritsch	2010	CAT
ETP	Calderara	2020	CAT
ETP	de Laat-Kremers	2022	CAT
ETP	Cimenti	2006	CAT
ETP	Siklar	2011	CAT